



RULES FOR
CLASSIFICATION OF

SHIPS / HIGH SPEED, LIGHT CRAFT AND NAVAL SURFACE CRAFT

NEWBUILDINGS

SPECIAL EQUIPMENT AND SYSTEMS
ADDITIONAL CLASS

PART 6 CHAPTER 13

GAS FUELLED ENGINE INSTALLATIONS

JANUARY 2007

CONTENTS

PAGE

Sec. 1	General Requirements	5
Sec. 2	Materials	8
Sec. 3	Arrangement and System Design	9
Sec. 4	Fire Safety	13
Sec. 5	Electrical Systems	14
Sec. 6	Control, Monitoring and Safety Systems	16
Sec. 7	Compressors and Gas Engines	21
Sec. 8	Manufacture, Workmanship and Testing	22

DET NORSKE VERITAS

Veritasveien 1, NO-1322 Høvik, Norway Tel.: +47 67 57 99 00 Fax: +47 67 57 99 11

CHANGES IN THE RULES

General

The present edition of the rules includes additions and amendments decided by the Board as of December 2006, and supersedes the January 2005 edition of the same chapter.

The rule changes come into force on 1 July 2007.

This chapter is valid until superseded by a revised chapter. Supplements will not be issued except for an updated list of minor amendments and corrections presented in Pt.0 Ch.1 Sec.3. Pt.0 Ch.1 is normally revised in January and July each year.

Revised chapters will be forwarded to all subscribers to the rules. Buyers of reprints are advised to check the updated list of rule chapters printed Pt.0 Ch.1 Sec.1 to ensure that the chapter is current.

Main changes coming into force 1 July 2007

• General

- The applicability of the DNV rules for LNG carriers, fitted with gas engines, has been clarified. For those parts of the rules that are relevant to LNG carriers, a system utilising bold italic print, of what is not relevant, has been introduced.

• Sec.1 General Requirements

Sec.3 Arrangement and System Design **Sec.5 Electrical Systems**

- The new IEC 60092-502 standard for gas dangerous zones has been adopted by IMO and will be implemented in the DNV rules for new tankers, in January 2007. The standard utilises gas zones 0, 1 and 2 instead of "gas dangerous" as previously used. The definitions as well as the electrical and ventilation requirements in Pt.6 Ch.13 have therefore been updated to be in line with the new standard.

• Sec.1 General Requirements

- New item A102, concerning applicable gases, has been included to make it clear that additional consideration may be necessary if gases with different properties, other than natural gas (methane), are to be used as fuel. These gases may be heavier than air, or with higher leakage rates, such as propane and hydrogen.

• Sec.3 Arrangement and System Design

- Concerning item B103. Access to the tank room is normally not to be open for passage during normal operation, this is to stop people entering the tank room. Therefore a requirement for the gas tank room, not to be accessible during normal operation, has been added.
- Concerning item D201. For low pressure gas systems ventilation inlet openings for the double wall piping or duct can be accepted located in the engine room on the condition that a gas detection system is fitted in the engine room. This is similar to what is already done in LNG tankers with dual fuel boilers.
- Concerning item E104. The design pressure for outer boundary around low pressure piping, has been changed from design pressure (10 bar) to actual working pressure of inner pipe. This has been changed to make it possible to use rectangular ducts and not only piping as outer boundary.

• Sec.6 Control, Monitoring and Safety Systems

- Concerning item C101. Gas detection requirements have been updated. A requirement for two independent gas detection systems, in ESD protected engine room spaces, has been added, since this update is found to provide a correct level of safety.
- Concerning item C103. In line with ABS rules as well as draft proposal for an International Code for Gas Fuelled Engine Installations (IGF). A requirement for analysis or testing to verify the correct location of gas detectors is also added.
- Concerning item B102 (deleted). The requirement for temperature monitoring of gas tanks has been deleted. This was found unnecessary for small gas tanks as these are used for gas bunker.

• Sec.7 Compressors and gas engines

- Concerning item B104. A requirement for explosion relief venting or explosive strength of the inlet air manifold, where gas is mixed with air via a common inlet manifold has been moved from section for gas-only engines to the general section to ensure that this important requirement also covers dual fuel engines.

Corrections and Clarifications

In addition to the above stated rule requirements, a number of corrections and clarifications have been made to the existing rule text.

Comments to the rules may be sent by e-mail to rules@dnv.com

For subscription orders or information about subscription terms, please use distribution@dnv.com

Comprehensive information about DNV and the Society's services is found at the Web site <http://www.dnv.com>

© Det Norske Veritas

Computer Typesetting (Adobe FrameMaker) by Det Norske Veritas

Printed in Norway

If any person suffers loss or damage which is proved to have been caused by any negligent act or omission of Det Norske Veritas, then Det Norske Veritas shall pay compensation to such person for his proved direct loss or damage. However, the compensation shall not exceed an amount equal to ten times the fee charged for the service in question, provided that the maximum compensation shall never exceed USD 2 million.

In this provision "Det Norske Veritas" shall mean the Foundation Det Norske Veritas as well as all its subsidiaries, directors, officers, employees, agents and any other acting on behalf of Det Norske Veritas.

CONTENTS

SEC. 1 GENERAL REQUIREMENTS	5	SEC. 4 FIRE SAFETY	13
A. Classification.....	5	A. General.....	13
A 100 Application.....	5	A 100 General.....	13
A 200 Class notation.....	5	B. Fire Protection	13
A 300 Survey extent	5	B 100 <i>Construction</i>	13
B. Definitions	5	C. Fire Extinction.....	13
B 100 Terms	5	C 100 <i>Fire main</i>	13
C. Documentation	6	C 200 <i>Water spray systems</i>	13
C 100 Plans and particulars	6	C 300 <i>Dry chemical powder fire extinguishing system</i>	13
D. Certification.....	7	D. Fire Detection and Alarm Systems	13
D 100 Gas engines	7	D 100 <i>Detection</i>	13
D 200 Pressure vessels.....	7	D 200 Alarms and safety actions	13
D 300 Valves	7	SEC. 5 ELECTRICAL SYSTEMS	14
D 400 Pumps and compressors	7	A. General.....	14
E. Operation and Maintenance Manuals.....	7	A 100 General	14
E 100 Contents	7	B. Area classification	14
SEC. 2 MATERIALS.....	8	B 100 General	14
A. General.....	8	B 200 Definition of zones.....	14
A 100 Material requirements	8	C. Inspection and testing	14
SEC. 3 ARRANGEMENT AND SYSTEM DESIGN	9	C 100 General	14
A. Location and Separation of Spaces.....	9	D. Maintenance.....	15
A 100 Gas compressor room.....	9	D 100 General	15
A 200 Engine rooms	9	SEC. 6 CONTROL, MONITORING AND SAFETY	16
A 300 Tank rooms	9	SYSTEMS	16
B. Arrangement of Entrances and Other Openings.....	9	A. General	16
B 100 General	9	A 100 <i>Introduction</i>	16
C. General Gas Pipe Design	9	B. Monitoring	16
C 100 General	9	B 100 Gas tank monitoring.....	16
D. System Configuration	9	B 200 Gas compressor monitoring	16
D 100 General	9	B 300 Gas engine monitoring	16
D 200 Inherently gas safe machinery spaces	9	C. Gas Detection	17
D 300 ESD protected machinery spaces	10	C 100 Locations	17
E. Gas Supply System in Machinery Spaces	10	D. Safety Functions of Gas Supply Systems	17
E 100 Gas supply system for inherently gas safe machinery spaces	10	D 100 General	17
E 200 Gas supply system for ESD protected machinery spaces	10	SEC. 7 COMPRESSORS AND GAS ENGINES	21
F. Gas Fuel Storage	10	A. Gas Compressors.....	21
F 100 <i>Liquefied gas storage tanks</i>	10	A 100 General	21
F 200 <i>Compressed gas storage tanks</i>	11	A 200 Vibrations.....	21
F 300 <i>Storage above deck</i>	11	B. Gas Engine Design	21
F 400 <i>Storage below deck</i>	11	B 100 General	21
G. Fuel Bunkering System and Distribution System outside Machinery Spaces.....	11	B 200 Functional requirements dual fuel engines	21
G 100 <i>Fuel bunkering station</i>	11	B 300 Functional requirements gas-only engines.....	21
G 200 <i>Bunkering system</i>	11	B 400 Design of on-engines piping on gas-only engines	21
G 300 <i>Distribution outside of machinery spaces</i>	11	SEC. 8 MANUFACTURE, WORKMANSHIP AND TESTING.....	22
H. Ventilation Systems.....	12	A. Gas Tanks	22
H 100 General	12	A 100 <i>Manufacture and testing</i>	22
H 200 Non-hazardous spaces.....	12	B. Gas Piping Systems	22
H 300 <i>Gas tank room</i>	12	B 100 Gas pipes	22
H 400 Engine room.....	12	B 200 Ducting.....	22
H 500 Pump and compressor rooms	12	B 300 Valves	22
		B 400 Expansion bellows	22

SECTION 1 GENERAL REQUIREMENTS

A. Classification

A 100 Application

101 The rules in this chapter apply to internal combustion engine installations in ships. Application of the ESD concept for LNG carriers requires acceptance by the Flag Administration under the equivalency clause in the IGC Code. The engines may be either single fuel engines or dual fuel engines, and the gas may be in gaseous or liquid state.

Guidance note 1:

The use of gas as fuel in ships other than LNG carriers is not covered by international conventions and such installations will need additional acceptance by flag authorities.

---e-n-d---of---G-u-i-d-a-n-c-e---n-o-t-e---

Guidance note 2:

Requirements not relevant for LNG carriers are shown in **bold italic** text.

---e-n-d---of---G-u-i-d-a-n-c-e---n-o-t-e---

102 The rules are applicable for installations where natural gas is used as fuel. If other gases are used as fuel special considerations will have to be done, and additional requirements may be relevant.

A 200 Class notation

201 Ships built with machinery satisfying the requirements in this chapter will be given class notation:

GAS FUELLED.

A 300 Survey extent

301 Survey requirements for ships with the class notation **GAS FUELLED** are given in the Rules for Classification of Ships, Pt.7 Ch.1 Sec.2 A and C, Pt.7 Ch.1 Sec.3 C and Pt.7 Ch.1 Sec.4 C.

B. Definitions

B 100 Terms

101 *Accommodation spaces*: See the Rules for Classification of Ships, Pt.4 Ch.10.

102 *Control stations*: See the Rules for Classification of Ships, Pt.4 Ch.10.

Guidance note:

This does not include special fire control equipment that can be most practically located in the cargo area (if the vessel is a cargo ship).

---e-n-d---of---G-u-i-d-a-n-c-e---n-o-t-e---

103 *Double block and bleed valve* is a set of three automatic valves located at the fuel supply to each of the gas engines. Two of these valves shall be in series in the gas fuel pipe to the consuming equipment. The third valve shall be in a pipe that vents to a safe location in the open air, that portion of the gas fuel piping that is between the two valves in series.

Alternatively, the function of one of the valves in series and the ventilation valve can be incorporated into one valve body, so arranged that the flow to the gas utilisation unit will be blocked and the ventilation opened.

104 *Dual fuel engines* are in this context engines that can burn gaseous and liquid fuel simultaneously and in a wide va-

riety of proportions.

105 *ESD* means emergency shutdown.

106 *Enclosed spaces* are spaces bounded by bulkheads and decks that may have doors, windows or other similar openings.

107 *Engine room* is in this chapter used for machinery spaces containing gas fuelled engines.

108 *Gas* is defined as a fluid having a vapour pressure exceeding 2.8 bar absolute at a temperature of 37.8°C.

109 *Hazardous area*

Area in which an explosive gas atmosphere or a flammable gas with a flash point below 60°C is or may be expected to be present, in quantities such as to require special precautions for the construction, installation and use of electrical apparatus.

Hazardous areas are divided into Zone 0, 1 and 2 as defined below and according to the area classification specified in Sec.5 B.

Zone 0

Area in which an explosive gas atmosphere or a flammable gas with a flash point below 60°C is present continuously or is present for long periods

Zone 1

Area in which an explosive gas atmosphere or a flammable gas with a flash point below 60°C is likely to occur in normal operation

Zone 2

Area in which an explosive gas atmosphere or a flammable gas with a flash point below 60°C is not likely to occur in normal operation and, if it does occur, is likely to do so only infrequently and will exist for a short period only.

Guidance note:

The definition of hazardous area is only related to the risk of explosion. In this context, health, safety and environmental issues, i.e. toxicity, is not considered.

---e-n-d---of---G-u-i-d-a-n-c-e---n-o-t-e---

110 *Non-hazardous area*

An area not considered to be hazardous, i.e. gas safe, provided certain conditions are being met.

111 *Sources of release* are valves or detachable pipe joints in the fuel gas system. Also compressors and seals of pumps in the fuel gas system are regarded as sources of release.

112 *High-pressure piping* is in this context piping with maximum working pressure above 10 bar.

113 *LEL* is lower explosion limit.

114 *Main tank valve is a remote operated valve on the gas outlet from a gas storage tank, located as close to the tank outlet point as possible.*

115 *Master gas fuel valve* is an automatic valve in the gas supply line to each engine located outside the engine room and as close to the gas heater (if fitted) as possible.

116 *Passenger areas are those spaces that are provided for the accommodation and use of passengers, excluding baggage, store, provision and mail rooms.*

117 *Semi-enclosed spaces* are locations where natural conditions of ventilation are notably different from those on open decks due to the presence of structures such as roofs, wind breakers and bulkheads and which are so arranged that dispersion of gas may not occur.

118 *Service spaces* are spaces outside the cargo area used for galleys, pantries containing cooking appliances, lockers, mail and specie rooms, store rooms, workshops other than those forming part of the machinery spaces and similar spaces and trunks to such spaces.

119 *Single gas fuel system* is a power generating system consisting of gas-only engines, not able to switch over to fuel oil running.

C. Documentation

C 100 Plans and particulars

101 Arrangement plans shall be submitted for approval giving location of:

- machinery and boiler spaces, accommodation, service and control station spaces
- *gas tanks and gas containment systems*
- *gas pump and compressor rooms*
- *gas piping with shore connections*
- *tank hatches, ventilation pipes and any other openings to the gas tanks*
- *ventilating pipes, doors and openings to gas pump rooms, compressor rooms and other hazardous areas*
- entrances, air inlets and openings to accommodation, service and control station spaces
- hazardous areas of zone 0, 1 and 2, and their extent.

102 *Plans of the gas containment system with the following particulars shall be submitted for approval:*

- *drawing of gas tanks including information on non-destructive testing of welds and strength and tightness testing of tanks*
- *drawings of support and staying of independent tanks*
- *specification of materials in gas tanks and gas piping systems*
- *specifications of welding procedures for gas tanks*
- *specification of stress relieving procedures for independent tanks type C (thermal or mechanical)*
- *specification of design loads and structural analysis of gas tanks*
- *a complete stress analysis shall be submitted for independent tanks type C*
- *specification of cooling-down procedure for gas tanks*
- *arrangement and specifications of secondary barriers*
- *drawings and specifications of tank insulation*
- *drawing of marking plate for independent tanks.*

103 Plans of the following piping systems shall be submitted for approval:

- drawings and specifications of gas piping including ventilation lines of safety relief valves or similar piping
- drawings and specifications of offsets, loops, bends and mechanical expansion joints, such as bellows, slip joints (only inside tank) or similar means in the gas piping
- drawings and specifications of flanges, valves and other fittings in the gas piping system. For valves intended for piping systems with a design temperature below minus 55°C, documentation for leak test and functional test at design temperature (type test) is required
- complete stress analysis of piping system when design temperature is below minus 110°C
- documentation of type tests for expansion components in the gas piping system
- specification of materials, welding, post-weld heat treatment and non-destructive testing of gas piping
- specification of pressure tests (structural and tightness tests) of gas piping
- program for functional tests of all piping systems includ-

ing valves, fittings and associated equipment for handling gas (liquid or vapour)

- drawings and specifications of insulation for low temperature piping where such insulation is installed
- specification of electrical bonding of piping
- *specification of means for removal of liquid contents from bunkering pipes prior to disconnecting the shore connection, see E100*
- cooling or heating water system in connection with gas fuel system, if fitted.

104 *The following plans and particulars for the safety relief valves shall be submitted for approval:*

- *drawings and specifications for safety relief valves and pressure/vacuum relief valves and associated ventilation piping*
- *calculation of required gas tank relief valve capacity, including back pressure*
- *specification of procedures for changing of set pressures of cargo tank safety relief valves if such arrangements are contemplated*
- *calculations for safety valves ventilation mast: location, height, details.*

105 Plans of the following equipment and systems with particulars shall be submitted:

- drawings showing location and construction of air locks with alarm equipment, if fitted
- drawings of gastight bulkhead penetrations, if fitted
- arrangements and specifications of mechanical ventilation systems in spaces covering gas fuel system, giving capacity and location of fans and their motors. Drawings and material specifications of rotating parts and casings for fans and portable ventilators
- *drawings and specifications of protection of hull steel beneath liquid piping where liquid leakage may be anticipated, such as at shore connections and at pump seals*
- *arrangement and specifications of piping systems for gas freeing and purging of gas tanks*
- for fixed gas detection and alarm systems: specification and location of detectors, alarm devices and call points, and cable routing layout drawing
- *bilge and drainage arrangements in gas pump rooms, compressor rooms, tank rooms*
- exhaust gas system.

106 Plans of the following equipment and systems regarding fire protection shall be submitted for approval:

- *arrangement and specification of water spray system, including pipes, valves, nozzles and fittings*
- arrangement of ventilation duct required for gas pipes lead through enclosed spaces
- *arrangement of ventilation duct for storage tank fitted below deck, if applicable*
- *arrangement of fire detection system for storage tank and ventilation trunk*
- *arrangement of fire insulation for storage tank and pipes, ventilation trunks for storage tank room*
- *arrangement and specification of dry chemical powder installation.*

107 *Plans of electrical installations giving the following particulars shall be submitted for approval:*

- *drawing(s) showing location of all electrical equipment in hazardous areas and data for verification of the compatibility between the barrier and the field component*
- *single line diagram for intrinsically safe circuits*
- *list of explosion protected equipment with reference to drawings together with certificates*
- *maintenance manual as specified in Sec.5 D, for electri-*

cal installations in hazardous areas shall be submitted for information.

108 The following control and monitoring systems shall be approved by the Society:

- gas detection system
- **gas tank monitoring system**
- gas compressors control and monitoring system
- gas engines control and monitoring system.

For requirements to documentation, see Pt.4 Ch.9.

109 A failure mode and effect analysis (FMEA) examining all possible faults affecting the combustion process in the gas engines shall be submitted for approval.

110 A test program for the safety functions of the gas installation in the form of a Cause and Effect diagram is to be submitted for approval.

111 An operation manual shall be submitted for approval, to include information as outlined in E100.

D. Certification

D 100 Gas engines

101 Gas engines are in addition to the requirements in this chapter shall be certified in accordance with Pt.4 Ch.3.

D 200 Pressure vessels

201 Pressure vessels, which under normal operations will contain gas in the liquid and/or gaseous state, shall be certified as class I pressure vessels in accordance with Pt.4 Ch.7.

D 300 Valves

301 For valves a DNV product certificate is required, as given in the Rules for Classification of Ships, Pt.4 Ch.6.

D 400 Pumps and compressors

401 Pumps and compressors in gas systems shall be deliv-

ered with a DNV product certificate.

402 For general requirements and in regard to testing of pumps: See the Rules for Classification of Ships, Pt.4 Ch.6.

403 For general requirements and with regard to testing of compressors: See Pt.4 Ch.5.

E. Operation and Maintenance Manuals

E 100 Contents

101 *An operation manual shall include:*

- *bunkering procedure*
- *gas freeing and inerting procedures*
- *normal operation procedures of the gas system*
- *emergency operation procedures of the gas system.*

102 A plan for systematic maintenance and function testing shall be kept onboard showing in detail how components and systems shall be tested and what shall be observed during the tests. Columns showing test dates and verification of tests carried out shall be included. The plan shall include:

- all instrumentation, automation and control systems affecting the gas supply system
- test intervals to reflect the consequences of failure involving a particular system. Functional testing of critical alarms should not exceed 3 months intervals. Normally the longest intervals shall not surpass 12 months.

The plan should be included in the plan required for the class notation **E0**.

Guidance note:

Critical alarms are defined as low lubricating oil pressure alarms for rotating machinery.

---e-n-d---of---G-u-i-d-a-n-c-e---n-o-t-e---

SECTION 2 MATERIALS

A. General

A 100 Material requirements

101 Materials are in general to be in accordance with the requirements in Pt.2.

102 Materials used in gas tanks, gas piping, process pressure vessels and other components in contact with gas shall be in accordance with the Rules for Classification of Ships, Pt.5 Ch.5 Sec.2 D. For piping see the Rules for Classification of Ships, Pt.5 Ch.5 Sec.6 C200.

103 The materials used in gas piping systems shall be furnished with documentation in accordance with the Rules for

Classification of Ships, Pt.5 Ch.5 Sec.2 Table E1. For the definition of material documentation see the Rules for Classification of Ships, Pt.1 Ch.1 Sec.4.

104 The outer pipe in inherently safe engine room spaces with high pressure gas in the inner pipe is as least required to fulfil the material requirements for pipe materials with design temperature down to -55 in the Rules for Classification of Ships, Pt.5 Ch.5 Sec.2 Table D4.

105 The outer pipe or duct around gas pipes with liquid gas shall be made of cold resistant steel unless it is efficiently protected from possible leakages from the inner pipe.

SECTION 3 ARRANGEMENT AND SYSTEM DESIGN

A. Location and Separation of Spaces

A 100 Gas compressor room

101 Compressor rooms, if arranged, shall be located above weather deck level, unless especially approved by DNV.

102 Where compressors are driven by shafting passing through a bulkhead or deck, the bulkhead penetration shall be of gas tight type.

A 200 Engine rooms

201 When more than one engine room is required and these rooms are separated by a single bulkhead, the bulkhead shall have sufficient strength to withstand a local gas explosion. A strength standard of the bulkhead corresponding to that of a watertight bulkhead is considered adequate.

202 Engine rooms of the ESD protected type shall have as simple geometrical shape as possible.

A 300 Tank rooms

301 *Tank rooms boundaries shall be gas tight.*

302 *The tank room shall not be located adjacent to machinery spaces of category A. If the separation is by means of a cofferdam then additional insulation to class A-60 standard shall be fitted.*

B. Arrangement of Entrances and Other Openings

B 100 General

101 *If the compressor room is approved located below deck the room shall have a separate access from deck, not shared with any other spaces.*

102 *The tank room entrance shall be arranged with a sill height of at least 300 mm.*

103 *Access to the tank room is as far as practicable to be through a separate access from the deck, not shared with any other spaces. If the tank room is only partially covering the tank, this requirement is to be applied to the room surrounding the tank, and where the opening to the tank room is located. The access trunk shall be fitted with separate ventilation.*

If the access to the tank room is from another space in the ship, due consideration is to be made to prevent the possibility of a gas release escaping to non hazardous areas.

The tank room shall not be open for entrance during normal operation of the gas system.

104 An engine room containing gas engines shall have at least two completely independent exits. However, if the engine room is very small, this requirement can be waived after special consideration by DNV.

105 If the access to an engine room of ESD protected type is from another enclosed space in the ship, the entrances shall be arranged with self-closing doors. An alarm shall sound if the door is open continuously for more than 1 minute. As an alternative an arrangement with two self-closing doors in series can be approved.

C. General Gas Pipe Design

C 100 General

101 Gas pipes shall in general comply with the applicable parts of the Rules for Classification of Ships, Pt.5 Ch.5 Sec.6.

102 Gas piping shall not be located less than 760 mm from the ship's side.

103 An arrangement for purging gas bunkering lines and supply lines (only up to the double block and bleed valves if these are located close to the engine) with nitrogen shall be provided.

104 The gas piping system shall be installed with sufficient flexibility. Bellows will not be accepted in enclosed spaces.

105 A system for colour marking of all gas pipes shall be used, e.g. yellow painted pipes.

106 If the fuel gas contains heavier components that may condense in the system, knock out drums or equivalent means for collecting the liquid shall be fitted.

107 High pressure gas piping systems shall have sufficient constructive strength. This shall be confirmed by carrying out stress analysis and taking into account:

- stresses due to the weight of the piping system
- acceleration loads when significant
- internal pressure and loads induced by hog and sag of the ship.

[IACS UR M59 (1996)]

Guidance note:

Significant acceleration loads is in this context acceleration loads that give a stress equal to more than 20% of the stress from the internal pressure in the pipe

---e-n-d---of---G-u-i-d-a-n-c-e---n-o-t-e---

108 All valves and expansion joints used in high pressure gas systems shall be of an approved type.

[IACS UR M59 (1996)]

D. System Configuration

D 100 General

101 Two alternative system configurations may be accepted:

I Inherently gas safe machinery spaces: Arrangements in machinery spaces are such that the spaces are considered gas safe under all conditions, normal as well as abnormal conditions i.e. inherently gas safe.

II ESD protected machinery spaces: Arrangements in machinery spaces are such that the spaces are considered non-hazardous under normal conditions, but under certain abnormal conditions may have the potential to become gas hazardous. In the event of abnormal conditions involving gas hazards, emergency shutdown (ESD) of non-safe equipment (ignition sources) and machinery shall be automatically executed while equipment or machinery in use or active during these conditions shall be of explosion protected design.

D 200 Inherently gas safe machinery spaces

201 All gas supply piping within machinery space boundaries must be enclosed in a gas tight enclosure, i.e. double wall piping or ducting.

202 For low pressure gas systems ventilation inlet openings for the double wall piping or duct can be accepted located in the engine room on the condition that a gas detection system is fitted in the engine room.

203 In case of leakage in a gas supply pipe making shutdown of the gas supply necessary, a secondary independent fuel supply must be available. Alternatively, in the case of multi-engine installations, independent and separate gas supply systems for each engine or group of engines may be accepted.

204 For single fuel installations (gas only) the fuel storage shall be divided between two or more tanks of approximately equal size. The tanks shall be located in separate compartments.

D 300 ESD protected machinery spaces

301 Gas supply piping within machinery spaces may be accepted without a gas tight external enclosure on the following conditions:

- Engines for generating propulsion power and electric power shall be located in two or more engine rooms not having any common boundaries unless it can be documented that the common boundary can withstand an explosion in one of the rooms. Distribution of engines between the different engine rooms shall be such that in the case of shutdown of fuel supply to any one engine room it must be possible to maintain at least 40% of the propulsion power plus normal electrical power supply for sea going services. Incinerators, inert gas generators or other oil fired boilers shall not be located within an ESD protected machinery space.
- Pressure in gas supply lines within machinery spaces to be less than 10 bar.
- A gas detection system arranged to automatically shut-down the gas supply (also oil fuel supply if dual fuel) and disconnect all non-explosion protected equipment or installations shall be fitted.

302 For single fuel installations (gas only) the fuel storage shall be divided between two or more tanks of approximately equal size. The tanks shall be located in separate compartments.

E. Gas Supply System in Machinery Spaces

E 100 Gas supply system for inherently gas safe machinery spaces

101 Gas supply lines passing through enclosed spaces shall be completely enclosed by a double pipe or duct. This double pipe or duct shall fulfil one of the following:

- The gas piping shall be a double wall piping system with the gas fuel contained in the inner pipe. The space between the concentric pipes shall be pressurised with inert gas at a pressure greater than the gas fuel pressure. Suitable alarms shall be provided to indicate a loss of inert gas pressure between the pipes.

When the inner pipe contains high pressure gas the system shall be so arranged so that the pipe between the master gas valve and the engine is automatically purged with inert gas when the master gas valve is closed.

[IACS UR M59 (1996)]

- The gas fuel piping shall be installed within a ventilated pipe or duct. The air space between the gas fuel piping and the wall of the outer pipe or duct shall be equipped with mechanical underpressure ventilation having a capacity of at least 30 air changes per hour. This ventilation capacity can be reduced to 10 air changes per hour provided auto-

matic filling of the duct with nitrogen upon detection of gas is arranged for. The fan motors shall be placed outside the ventilated pipe or duct. The ventilation outlet shall be covered by a protection screen and placed in a position where no flammable gas-air mixture may be ignited.

102 The connecting of gas piping and ducting to the gas injection valves must be so as to provide complete coverage by the ducting. The arrangement must facilitate replacement and or overhaul of injection valves and cylinder covers.

Double ducting is also required for gas pipes on the engine and up to where the gas is supplied into the combustion chamber.

Guidance note:

If gas is supplied into the air inlet pipe on a low pressure engine, double ducting may be omitted on the air inlet pipe on the condition that a gas detector is fitted above the engine.

---e-n-d---of---G-u-i-d-a-n-c-e---n-o-t-e---

103 For high-pressure piping the design pressure of the ducting shall be taken as the higher of the following:

- the maximum built up pressure: static pressure in way of the rupture resulting from the gas flowing in the annular space
- local instantaneous peak pressure in way of the rupture p^* : this pressure shall be taken as the critical pressure and is given by the following expression:

$$p^* = p_0 \left(\frac{2}{k+1} \right)^{\frac{k}{k-1}}$$

p_0 = maximum working pressure of the inner pipe

$k = C_p/C_v$ constant pressure specific heat divided by the specific volume specific heat

$k = 1.31$ for CH_4

The tangential membrane stress of a straight pipe shall not exceed the tensile strength divided by 1.5 ($R_m/1.5$) when subjected to the above pressure. The pressure ratings of all other piping components shall reflect the same level of strength as straight pipes.

As an alternative to using the peak pressure from the above formula, the peak pressure found from representative tests can be used. Test reports must then be submitted.

104 For low pressure piping the duct shall be dimensioned for a design pressure not less than the maximum working pressure of the gas pipes. The duct is also to be tightness tested.

105 The arrangement and installation of the high-pressure gas piping must provide the necessary flexibility for the gas supply piping to accommodate the oscillating movements of the engine, without running the risk of fatiguing problems. The length and configuration of the branch lines are important factors in this regard.

E 200 Gas supply system for ESD protected machinery spaces

201 The pressure in the gas supply system shall not exceed 10 bar.

202 The gas supply lines shall have a design pressure not less than 10 bar.

F. Gas Fuel Storage

F 100 Liquefied gas storage tanks

101 The storage tank used for liquefied gas shall be an independent tank type C designed in accordance with the Rules for Classification of Ships, Pt.5 Ch.5 Sec.5, in particular

Sec.5 I.

102 Pipe connections to the tank shall be in accordance with the Rules for Classification of Ships, Pt.5 Ch.5 Sec.6 C303 to C307. However, connections below the lowest liquid level may be accepted after special consideration by DNV.

103 Pressure relief valves as required in the Rules for Classification of Ships, Pt.5 Ch.5 Sec.9 B200 shall be fitted.

104 The outlet from the pressure relief valves are normally to be located at least $B/3$ or 6 m, whichever is greater, above the weather deck and 6 m above the working area and gangways, where B is the greatest moulded breadth of the ship in metres. The outlets shall be located at least 10 m from the nearest:

- air intake, air outlet or opening to accommodation, service and control spaces, or other non hazardous spaces
- exhaust outlet from machinery or from furnace installation.

105 Storage tanks for liquid gas with vapour pressure above the design pressure at 45 °C shall be fitted with efficient insulation.

106 Storage tanks for liquid gas shall not be filled to more than 98% full at the reference temperature, where the reference temperature is as defined in the Rules for Classification of Ships, Pt.5 Ch.5 Sec.17 A105. A filling limit curve for actual filling temperatures shall be prepared from the formula given in the Rules for Classification of Ships, Pt.5 Ch.5 Sec.17 A102. However, when the tank insulation and tank location makes the probability very small for the tank contents to be heated up due to external fire, special considerations can be made to allow a higher filling limit than calculated using the reference temperature, but never above 95%.

F 200 Compressed gas storage tanks

201 The storage tanks to be used for compressed gas shall be in accordance with Pt.4 Ch.7 and shall be certified by DNV.

202 Tanks for compressed gas shall be fitted with pressure relief valves with a set point below the design pressure of the tank and with outlet located as required in 104.

F 300 Storage above deck

301 Both gases of the compressed and the liquefied type will be accepted stored above deck level.

302 The storage tanks or tank batteries shall be located at least $B/5$ from the ship's side.

303 The gas storage tanks or tank batteries and equipment shall be located to assure sufficient natural ventilation, so as to prevent accumulation of escaped gas.

304 Tanks for liquid gas with a connection below the highest liquid level, see 102, shall be fitted with drip trays below the tank of sufficient size to hold the full content of the tank. The material of the drip tray should be stainless steel, and there should be efficient separation or insulation so that the hull or deck structures are not exposed to unacceptable cooling, in case of leakage of liquid gas.

F 400 Storage below deck

401 Only gas in a liquid state can be stored below deck level.

402 The maximum acceptable working pressure of a storage tank located below deck level is 10 bar.

403 The storage tank shall be located:

- minimum, the lesser of $B/5$ and 11.5 m from the ship side
- minimum, the lesser of $B/15$ and 2 m from the bottom plating

— not less than 760 mm from the shell plating.

For vessels other than passenger vessels a tank location closer than $B/5$ from the ship side may be accepted and approved by DNV, on a case by case basis.

404 The storage tank and associated valves and piping shall be located in a space designed to act as a secondary barrier, in case of liquid gas leakage. This implies that the material shall be in accordance with the Rules for Classification of Ships, Pt.5 Ch.5 Sec.2 D, for secondary barriers, and that the space shall be designed to withstand the maximum pressure build up. Alternatively, pressure relief venting to a safe location (mast) can be provided. The space shall be capable of containing leakage, and shall be isolated thermally so that the surrounding hull is not exposed to unacceptable cooling, in case of leakage of the liquid gas. This secondary barrier space is in other parts of this chapter called "tank room".

405 Bilge suctions from the tank room, if provided, shall not be connected to the bilge system for the rest of the ship.

G. Fuel Bunkering System and Distribution System outside Machinery Spaces

G 100 Fuel bunkering station

101 The bunkering station shall be so located that sufficient natural ventilation is provided. Closed or semi-enclosed bunkering stations will be subject to special consideration.

102 Drip trays shall be fitted below the bunkering connections and where leakage may occur. The drip trays shall be made of stainless steel, and should be drained over the ship's side by a pipe that preferably leads down into the sea. This pipe may be temporarily fitted for bunkering operations. The surrounding hull or deck structures shall not be exposed to unacceptable cooling, in case of leakage of liquid gas.

103 Control of the bunkering shall be possible from a safe location in regard to bunkering operations. At this location tank pressure and tank level shall be monitored. Overfill alarm and automatic shutdown are also to be indicated at this location.

G 200 Bunkering system

201 The bunkering system shall be so arranged that no gas is discharged to air during filling of the storage tanks.

202 A manually operated stop valve and a remote operated shutdown valve in series, or a combined manually operated and remote valve shall be fitted in every bunkering line close to the shore connecting point. It shall be possible to release the remote operated valve in the control location for bunkering operations and or another safe location.

203 If the ventilation in the ducting around the gas bunkering lines stop, an alarm shall sound at the bunkering control location.

204 If gas is detected in the ducting around the bunkering lines an alarm shall sound at the bunkering control location.

205 Means shall be provided for draining the liquid from the bunkering pipes at bunkering completion.

206 Bunkering lines shall be arranged for inerting and gas freeing. During operation of the vessel the bunkering pipes shall be gas free.

G 300 Distribution outside of machinery spaces

301 Gas fuel piping shall not be lead through accommodation spaces, service spaces or control stations.

302 Where gas pipes pass through enclosed spaces in the ship, they shall be enclosed in a duct. This duct shall be mechanically underpressure ventilated with 30 air changes per

hour, and gas detection as required in Sec.6 shall be provided.

303 *The duct shall be dimensioned according to E103 and E104.*

304 *The ventilation inlet for the duct is always to be located in open air, away from ignition sources.*

305 *Gas pipes located in open air shall be so located that they are not likely to be damaged by accidental mechanical impact.*

306 High-pressure gas lines outside the engine room spaces shall be installed and protected so as to minimise the risk of injury to personnel in case of rupture.

H. Ventilation Systems

H 100 General

101 Any ducting used for the ventilation of hazardous spaces shall be separate from that used for the ventilation of non-hazardous spaces. Electric fan motors shall not be located in ventilation ducts for hazardous spaces unless the motor is certified for the same hazard zone as the space served.

102 For design of ventilation fans serving spaces containing sources of release see requirements in the Rules for Classification of Ships, Pt.5 Ch.5 Sec.10 A200.

103 Means should be provided to indicate in the engine control station any loss of the required ventilating capacity.

104 Air inlets for hazardous enclosed spaces shall be taken from areas which, in the absence of the considered inlet, would be non-hazardous.

Air inlets for non-hazardous enclosed spaces shall be taken from non-hazardous areas at least 1.5 m away from the boundaries of any hazardous area.

Where the inlet duct passes through a more hazardous space, the duct shall have over-pressure relative to this space, unless mechanical integrity and gas-tightness of the duct will ensure that gases will not leak into it.

105 Air outlets from non-hazardous spaces shall be located outside hazardous areas.

106 Air outlets from hazardous enclosed spaces shall be located in an open area which, in the absence of the considered outlet, would be of the same or lesser hazard than the ventilated space.

107 The required capacity of the ventilation plant is normally based on the total volume of the room. An increase in required ventilation capacity may be necessary for rooms having a complicated form.

H 200 Non-hazardous spaces

201 Spaces with opening to a hazardous area, shall be arranged with an air-lock, and be maintained at overpressure, relative to the external hazardous area.

The overpressure ventilation shall be arranged according to the following requirements:

- 1) During initial start-up or after loss of overpressure ventilation, it is required before energising any electrical installations not certified safe for the space in the absence of pressurisation, to:
 - proceed with purging (at least 5 air changes) or confirm by measurements that the space is non-hazardous; and
 - pressurise the space.

- 2) Operation of the overpressure ventilation shall be monitored.
- 3) In the event of failure of the overpressure ventilation:

- an audible and visual alarm shall be given at a manned location.
- if overpressure cannot be immediately restored, automatic or programmed disconnection of electrical installations is required according to IEC 60092-502, Table 5.

H 300 Gas tank room

301 *The tank room for gas storage tank located below deck shall be provided with an effective mechanical ventilation system of the underpressure type, providing a ventilation capacity of at least 30 air changes per hour.*

302 *Approved automatic fail-safe fire dampers shall be fitted in the ventilation trunk for tank room.*

H 400 Engine room

401 The ventilation system for the engine room shall be independent of all other ventilation.

402 ESD protected engine rooms shall have ventilation with a capacity of at least 30 air changes per hour. The ventilation system shall ensure a good air circulation in all spaces, and in particular ensure that there is no possibility of formation of gas pockets in the room.

403 The number and power of the ventilation fans shall be such that the capacity is not reduced by more than 50%, if a fan with a separate circuit from the main switchboard or emergency switchboard or a group of fans with common circuit from the main switchboard or emergency switchboard, is out of action.

H 500 Pump and compressor rooms

501 Pump and compressor rooms shall be fitted with effective mechanical ventilation system of the underpressure type, providing a ventilation capacity of at least 30 air changes per hour.

502 Ventilation systems for pump and compressor rooms shall be in operation when pumps or compressors are working. Warning notices to this effect shall be placed in an easily visible position near the control stand.

503 When the space is dependent on ventilation for its area classification, the following requirements apply:

- 1) During initial start-up, and after loss of ventilation, the space shall be purged (at least 5 air changes), before connecting electrical installations which are not certified for the area classification in absence of ventilation.
- 2) Operation of the ventilation shall be monitored.
- 3) In the event of failure of ventilation, the following requirements apply;
 - an audible and visual alarm shall be given at a manned location.
 - immediate action shall be taken to restore ventilation.
 - electrical installations shall be disconnected if ventilation cannot be restored for an extended period. The disconnection shall be made outside the hazardous areas, and be protected against unauthorised re-connection, e.g. by lockable switches.

Guidance note:

Intrinsically safe equipment suitable for Zone 0, is not required to be switched off. Certified flameproof lighting, may have a separate switch-off circuit.

SECTION 4 FIRE SAFETY

A. General

A 100 General

101 The requirements in this chapter are additional to those given in SOLAS Ch.II-2.

102 For the purpose of fire protection gas compressor rooms shall be treated as cargo compressor rooms in accordance with the Rules for Classification of Ships, Pt.5 Ch.5 Sec.11.

B. Fire Protection

B 100 Construction

101 Tanks or tank batteries located above deck shall be shielded with class A-60 insulation towards accommodation, service stations, cargo spaces and machinery spaces.

102 The tank room and ventilation trunks to such spaces below the bulkhead deck shall be fire insulated to class A-60 standard. However, where the room is adjacent to tanks, voids, auxiliary machinery spaces of no fire risk, sanitary and similar spaces, the insulation may be reduced to class A-0.

103 Gas pipes led through ro-ro spaces on open decks will be subject to special considerations by DNV and might need class A-60 fire insulation.

104 The bunkering station shall be shielded with class A-60 insulation towards other spaces, except for spaces such as tanks, voids, auxiliary machinery spaces of no fire risk, sanitary and similar spaces where the insulation may be reduced to A-0 class.

105 When more than one engine room is required and these rooms are separated by a single bulkhead, the bulkhead shall be fire insulated to class A-60 standard.

C. Fire Extinction

C 100 Fire main

101 The water spray system required below may be part of the fire main system provided that the required fire pump capacity and pressure is sufficient for operation of both the required numbers of hydrants and hoses and the water spray system simultaneously.

102 When the storage tank is located above the bulkhead deck, isolating valves shall be fitted in the fire main in order to isolate damaged sections of the main.

C 200 Water spray systems

201 A water spray system shall be fitted for cooling and fire prevention and to cover exposed parts of storage tank located above deck.

202 The system shall be designed to cover all areas as specified above with an application rate of 10 l/min/m² for horizontal projected surfaces and 4 l/min/m² for vertical surfaces.

203 For the purpose of isolating damaged sections, stop valves shall be fitted or the system may be divided into two sections with control valves located in a safe and readily accessible position not likely to be cut-off in case of fire.

204 The capacity of the water spray pump shall be sufficient to deliver the required amount of water to the hydraulically most demanding area as specified above.

205 A connection to the ships fire main through a stop valve shall be provided.

206 Remote start of pumps supplying the water spray system and remote operation of any normally closed valves to the system should be located in a readily accessible position which is not likely to be cut off in case of fire in the areas protected.

207 The nozzles to be of an approved full bore type and they shall be arranged to ensure an effective distribution of water throughout the space being protected.

C 300 Dry chemical powder fire extinguishing system

301 In the bunkering station area a permanently installed dry chemical powder extinguishing system shall cover all possible leak points. The capacity shall be at least 50 kg with a rate of discharge of not less than 1 kg/s. The system shall be arranged for easy manual release from a safe location.

302 One portable dry powder extinguisher shall be located near the bunkering station.

303 Main engine rooms where the gas fuel is heavier than air shall be provided with at least one dry powder extinguisher located at the entrance to the room.

D. Fire Detection and Alarm Systems

D 100 Detection

101 An approved fixed fire detection system shall be provided for the tank room and the ventilation trunk for tank room below deck.

102 Smoke detectors alone are not considered sufficient for rapid fire detection.

103 Where the fire detection system does not include means of remotely identifying each detector individually, the detectors shall be arranged on separate loops.

D 200 Alarms and safety actions

201 Required safety actions at fire detection in the engine room and tank room are given in Sec.6 Table D1. In addition the ventilation shall stop automatically and fire dampers shall close.

SECTION 5 ELECTRICAL SYSTEMS

A. General

A 100 General

101 The requirements in this chapter are additional to those given in Pt.4 Ch.8.

102 Electrical equipment and wiring shall in general not to be installed in hazardous areas unless essential for operational purposes. The type of equipment and installation requirements shall comply with Pt.4 Ch.8 Sec.11 according to the area classification as specified in B.

103 Electrical equipment fitted in an ESD protected machinery space shall fulfil the following:

- In addition to fire and hydrocarbon detectors and fire and gas alarms, lighting and ventilation fans shall be certified safe for hazardous area zone 1.
- all electrical equipment in the engine room not certified for zone 1 shall be automatically disconnected if gas concentrations above 20% LEL is detected on two detectors in the engine room.

B. Area classification

B 100 General

101 Area classification is a method of analyzing and classifying the areas where explosive gas atmospheres may occur. The object of the classification is to allow the selection of electrical apparatus able to be operated safely in these areas.

102 In order to facilitate the selection of appropriate electrical apparatus and the design of suitable electrical installations, hazardous areas are divided into zones 0, 1 and 2 according to the principles of the standards IEC 60079-10 and guidance and informative examples given in IEC 60092-502 for tankers. Main features of the guidance are given in 200.

103 Areas and spaces other than those classified in 200 shall be subject to special consideration. The principles of the IEC standards shall be applied.

104 Area classification of a space may be dependent of ventilation as specified in IEC 60092-502, Table 1. Requirements for such ventilation are given in Sec.3 H400.

105 A space with opening to an adjacent hazardous area on open deck, may be made into a less hazardous or non-hazardous space, by means of overpressure. Requirements for such pressurisation are given in Sec.3 H200.

106 Ventilation ducts shall have the same area classification as the ventilated space.

B 200 Definition of zones

201 Hazardous areas zone 0

The interiors of gas tanks, pipes and equipment containing gas, any pipework of pressure-relief or other venting systems for gas tanks.

Guidance note:

Instrumentation and electrical apparatus in contact with the gas or liquid should be of a type suitable for zone 0. Temperature sensors installed in thermo wells, and pressure sensors without additional separating chamber should be of intrinsically safe type Ex-ia.

---e-n-d---of---G-u-i-d-a-n-c-e---n-o-t-e---

202 Hazardous areas zone 1

- 1) Tank room, as defined in Sec.3 A300.
- 2) Gas compressor room arranged with ventilation according to Sec.3 H503.
- 3) Areas on open deck, or semi- enclosed spaces on deck, within 3 m of any gas tank outlet, gas or vapour outlet (see note), bunker manifold valve, other gas valve, gas pipe flange, gas pump-room ventilation outlets and gas tank openings for pressure release provided to permit the flow of small volumes of gas or vapour mixtures caused by thermal variation.

Guidance note:

Such areas are, for example, all areas within 3 m of gas tank hatches, ullage openings or sounding pipes for gas tanks located on open deck and gas vapour outlets

---e-n-d---of---G-u-i-d-a-n-c-e---n-o-t-e---

- 4) Areas on open deck or semi-enclosed spaces on deck, within 1.5 m of gas compressor and pump room entrances, gas pump and compressor room ventilation inlets and other openings into zone 1 spaces.
- 5) Areas on the open deck within spillage coamings surrounding gas bunker manifold valves and 3 m beyond these, up to a height of 2.4 m above the deck.
- 6) Enclosed or semi-enclosed spaces in which pipes containing gas are located, e.g. ducts around gas pipes, semi-enclosed bunkering stations.

Guidance note 1:

The ESD protected machinery space is considered as non-hazardous area during normal operation, but changes to zone 1 at gas detection.

---e-n-d---of---G-u-i-d-a-n-c-e---n-o-t-e---

Guidance note 2:

Open ended ventilation pipes from gas piping systems will not create a hazardous zone in a surrounding well ventilated space.

---e-n-d---of---G-u-i-d-a-n-c-e---n-o-t-e---

203 Hazardous areas zone 2

Areas within 1.5 m surrounding open or semi-enclosed spaces of zone 1 as specified in 202, if not otherwise specified in this standard.

C. Inspection and testing

C 100 General

101 Before the electrical installations in hazardous areas are put into service or considered ready for use, they shall be inspected and tested. All equipment, including cables, shall be verified as having been installed in accordance with installation procedures and guidelines issued by the manufacturer of the equipment and cables, and that the installations have been carried out in accordance to Pt.4 Ch.8 Sec.11.

102 For spaces protected by pressurisation it shall be examined and tested that purging can be fully accomplished. Purge time at minimum flow rate shall be documented. Required shutdowns and / or alarms upon ventilation overpressure falling below prescribed values shall be tested.

For other spaces where area classification depends on mechanical ventilation it shall be tested that ventilation flow rate is

sufficient, and that required ventilation failure alarm operates correctly.

103 For equipment for which safety in hazardous areas depends upon correct operation of protective devices (for example overload protection relays) and / or operation of an alarm (for example loss of pressurisation for an Ex(p) control panel) it shall be verified that the devices have correct settings and / or correct operation of alarms.

104 Intrinsically safe circuits shall be verified to ensure that the equipment and wiring are correctly installed.

105 Verification of the physical installation shall be documented by the yard. Verification documentation shall be available for the Society's surveyor at the site.

D. Maintenance

D 100 General

101 The maintenance manual referred to in Sec.1 C107, shall be in accordance with the recommendations in IEC 60079-17 and 60092-502 and shall contain necessary information on:

- overview of classification of hazardous areas, with information about gas groups and temperature class
- records sufficient to enable the certified safe equipment to be maintained in accordance with its type of protection (list and location of equipment, technical information, manufacturer's instructions, spares etc.)
- inspection routines with information about level of detail and time intervals between the inspections, acceptance/rejection criteria
- register of inspections, with information about date of inspections and name(s) of person(s) who carried out the inspection and maintenance work.

102 Updated documentation and maintenance manual, shall be kept onboard, with records of date and names of companies and persons who have carried out inspections and maintenance.

Inspection and maintenance of installations shall be carried out only by experienced personnel whose training has included instruction on the various types of protection of apparatus and installation practices to be found on the vessel. Appropriate refresher training shall be given to such personnel on a regular basis.

SECTION 6 CONTROL, MONITORING AND SAFETY SYSTEMS

A. General

A 100 Introduction

101 *A local reading pressure gauge shall be fitted between the stop valve and the connection to shore at each bunker pipe.*

102 *Pressure gauges shall be fitted to gas pump discharge lines and to the bunkering lines.*

103 *A bilge well in each tank room surrounding an independent cargo tank shall be provided with both a level indicator and a temperature sensor. Alarm shall be given at high level in bilge well. Temperature sensor low temperature indication shall lead to automatic closing of main tank valve.*

B. Monitoring

B 100 Gas tank monitoring

101 *Gas tanks shall be monitored and protected against overfilling as required in the Rules for Classification of Ships, Pt.5 Ch.5 Sec.13 B100 and B200.*

102 *Each tank shall be monitored with at least one local indicating instrument for pressure and remote pressure indication at the control position. The manometers and indicators shall be clearly marked with the highest and lowest pressure permitted in the tank. In addition, high-pressure alarm, and if vacuum protection is required, low pressure alarm shall be provided on the bridge. The alarms shall be activated before the set pressures of the safety valves are reached.*

B 200 Gas compressor monitoring

201 The monitoring system shall include items given in Table B1.

Table B1 Monitoring system requirements		
	Alarm	Automatic stop
Gas heater outlet, temperature, high	X	
Gas compressor outlet, temperature, high	X	X
Gas compressor inlet, pressure, low	X	
Gas compressor outlet, pressure, high	X	
Gas compressor outlet, pressure, low	X	
Control system failure	X	
Sealing gas pressure, low	X	
Lubrication oil pressure, low	X	X
Lubrication oil temperature, high	X	
Master gas valve close	X	
In addition high-pressure gas compressors shall stop automatically in the event of:		
— control air pressure loss		
— high gas concentration in the compressor room (Table D1)		
— automatic stop or emergency stop of gas supply to diesel engine.		

B 300 Gas engine monitoring

301 In addition to the requirements given in Pt.4 Ch.3 Sec.1 E, control and monitoring as given in Table B2 is required for gas engines. Additionally a failure mode and effect analysis (FMEA) examining all possible faults affecting the combustion process shall be submitted. Based on the outcome of the analysis deviations in monitoring details compared to Table B2 may be accepted or required.

Table B2 Monitoring of dual fuel diesel or gas-only engines					
System	Item	Gr.1 Indication alarm load reduction	Gr.2 Automatic start of standby pump with alarm ¹⁾	Gr.3 Shutdown with alarm	Comments
1.0 Ignition system	Ignition failure each cylinder ²⁾	A			Automatic stop of gas supply ³⁾
2.0 Lubricating oil system	Cylinder lubrication flow ⁴⁾	LA			
3.0 Fuel injection valve cooling system ⁵⁾	Fuel injection valve cooling medium pressure	LA	AS		Automatic start of standby pump is not required if main pump is engine driven
	Fuel injection valve cooling medium temperature	HA			
4.0 Gas injection valve sealing oil system	Gas injection valve sealing oil pressure	LA			For high-pressure injection only
5.0 Gas fuel knock-out drums, if fitted	Gas fuel knock-out drums liquid level	HA			
<p>Gr 1: Common sensor for indication, alarm, load reduction Gr 2: Sensor for automatic start of standby pump Gr 3: Sensor for shut down.</p> <p>LA = Alarm for low value HA = Alarm for high value A = Alarm activated AS = Automatic start of standby pump with alarm LR = Alarm with request for either manual or automatic load reduction. For auxiliary engines other than prime mover of generators, slow down may be accepted (depending on application) as alternative means of load reduction SH = Shut down.</p> <p>1) Only for propulsion engines 2) Exhaust temperature deviation may be accepted as means of detecting ignition failure, individually on each cylinder 3) Gas shut down to the specific cylinder or the engine can be accepted 4) At least one measuring point for each lubricator unit 5) Dual fuel engines only.</p>					

C. Gas Detection

C 100 Locations

101 Permanently installed gas detectors shall be fitted *in the tank room*, in all ducts around gas pipes, in engine rooms, compressor rooms, and other enclosed spaces containing gas piping or other gas equipment, but not including spaces where completely ducted gas pipes are passing through. In each ESD protected machinery space two independent gas detector systems are required.

Guidance note:

Gas detectors may be required also in inherently safe engine rooms in any of the following cases:

- the ventilation air to the double pipe/duct is taken from the engine room
- the gas is supplied into the charge air before the inlet valve in the cylinder head if the components in contact with the gas air mixture are not protected by a double duct

---e-n-d---of---G-u-i-d-a-n-c-e---n-o-t-e---

102 The number of detectors in each space must be considered taking size, layout and ventilation of the space into account.

103 The detection equipment shall be located where gas may accumulate and or in the ventilation outlets.

Gas dispersal analysis or a physical smoke test shall be used to find the best arrangement.

104 An audible and visible alarm shall be activated before the vapour concentration reaches 20% of the lower flammable limit (LEL). For ventilated ducts around gas pipes in the engine room the alarm limit can be set to 30% LEL.

105 Audible and visible alarms from the gas detection equipment shall be located on the bridge and in the engine control room.

106 Continuous detection is required for gas pipe ducts and engine rooms.

D. Safety Functions of Gas Supply Systems

D 100 General

101 The main supply lines for gas to each engine shall be equipped with a manually operated stop valve and an automatically operated "master gas fuel valve" coupled in series or a combined manually and automatically operated stop valve. The valves shall be situated in the part of the piping that is outside engine room, and placed as near as possible to the installation for heating the gas. The master gas fuel valve is automatically to cut off the gas supply as given in Table D1.

The automatic master gas fuel valve shall be operable from a reasonable number of places in the engine room, from a room outside the engine room and from the bridge.

102 Each gas utilisation unit shall be provided with a set of

"double block and bleed" valves. These valves shall be arranged so that when automatic shutdown is initiated as given in Table D1, this will cause the two gas fuel valves that are in series to close automatically and the ventilation valve to open automatically.

The two block valves shall be of the fail-to-close type, while the ventilation valve shall be fail-to-open.

The double block and bleed valves are also to be used for nor-

mal stop of the engine.

103 In cases where the master gas fuel valve is automatically shutdown, a ventilation valve, that will ventilate the pipe piece between the master gas valve and the double block and bleed valve, shall open. For high-pressure systems the pipe pieces between the double block and bleed valve and the gas injection valves, shall be automatically vented. See Fig.1 and Fig.2. For high-pressure systems the ventilation valves shall open at normal stop of engine.

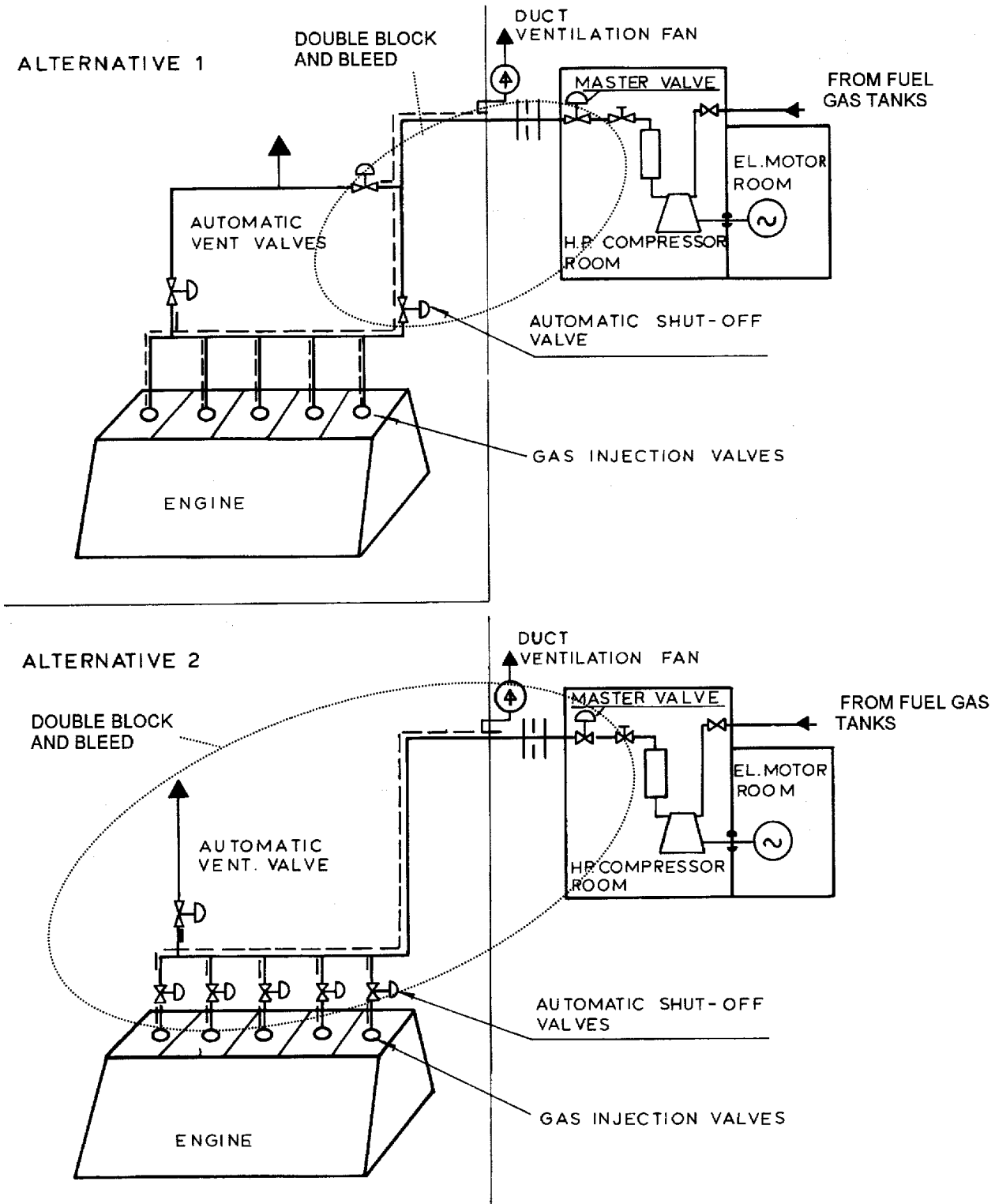


Fig. 1
Alternative supply valve arrangements for high-pressure installations (single engine or separate master valve arrangement)

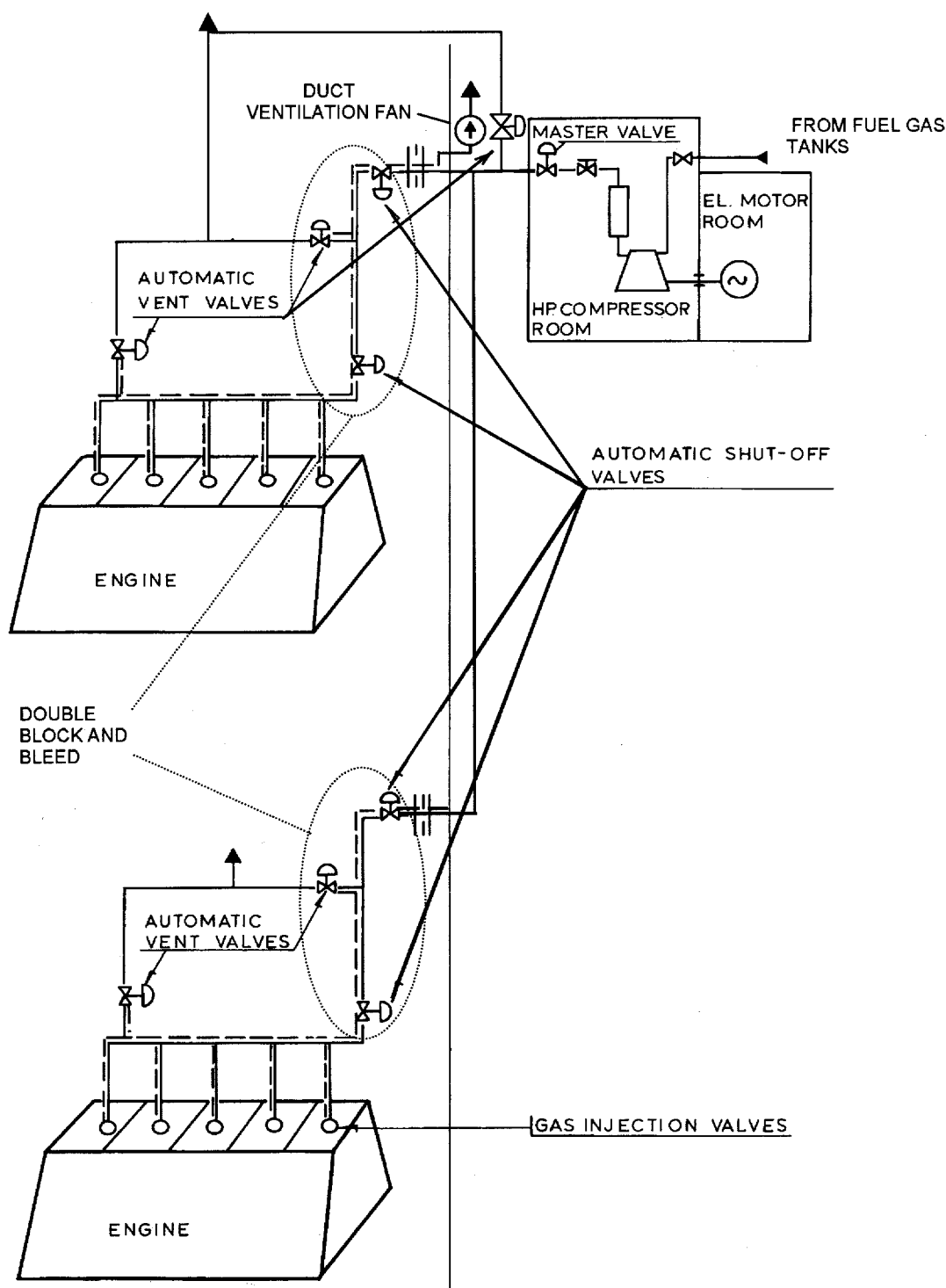


Fig. 2
Alternative supply valve arrangements for high-pressure installations (multi engine installation)

104 There shall be one manually operated shutdown valve in the gas supply line to each engine to assure safe isolation during maintenance on the engine.

105 For one-engine installations and multi-engine installations where a separate master valve is provided for each branch the master gas fuel valve and the double block and bleed valve functions can be combined as shown in Fig.1 and Fig.2, for high-pressure installations.

106 In the main supply gas line to each engine an automatic excess flow shut off valve shall be fitted. The valve shall be adjusted to shut off gas supply in the event of rupture of the gas line. The valve shall be located as close as possible to the point of entry of the gas supply line into the engine room. For ESD protected machinery spaces excess flow shut-down is also to lead to disconnection of all non-explosion protected equipment or installations in the engine room.

Guidance note:

The shutdown should be time delayed to prevent shutdown due to transient load variations.

---e-n-d---of---G-u-i-d-a-n-c-e---n-o-t-e---

107 Full stop of ventilation in an engine room for a single fuelled gas system shall, additionally to what is given in Table D1, lead to one of the following actions:

- For a gas electric propulsion system with more than one engine room:* Another engine shall start. When the second engine is connected to bus-bar the first engine shall be shutdown automatically.
- For a direct propulsion system with more than one engine room:* The engine in the room with defect ventilation shall be manually shutdown if at least 40% propulsion power is still available after such a shutdown.

If only one engine room is fitted and ventilation in one of the enclosed ducts around the gas pipes is lost the master gas fuel

and double block and bleed valves in that supply line shall close automatically provided the other gas supply unit is ready to deliver.

108 If the gas supply is shut off due to activation of an automatic valve, the gas supply shall not be opened until the reason for the disconnection is ascertained and the necessary precautions taken. A readily visible notice giving instruction to this effect shall be placed at the operating station for the shut-off valves in the gas supply lines.

109 If a gas leak leading to a gas supply shutdown occurs, the gas fuel supply shall not be operated until the leak has been found and dealt with. Instructions to this effect shall be placed in a prominent position in the machinery space.

110 A signboard shall be permanently fitted in the engine room stating that heavy lifting, implying danger of damage to the gas pipes, shall not be done when the engine(s) is running on gas.

Table D1 Monitoring of gas supply system to engines

Parameter	Alarm	Automatic shut-down of main tank valve	Automatic shut-down of gas supply to engine room ¹⁾	Comment
Gas detection in tank room above 20% LEL	X			
Gas detection on second detector in tank room above 20% LEL	X	X		
Fire detection in tank room	X	X		
Bilge well high level tank room	X			
Bilge well low temperature in tank room	X	X		
Gas detection in duct between tank and engine room above 20% LEL	X			
Gas detection on second detector in duct between tank and engine room above 20% LEL	X	X ²⁾		
Gas detection in compressor room above 20% LEL	X			
Gas detection on second detector in compressor room above 20% LEL	X	X ²⁾		
Gas detection in duct inside engine room above 30% LEL	X			If double pipe fitted in engine room
Gas detection on detector in duct inside engine room above 60% LEL	X		X	If double pipe fitted in engine room
Gas detection in engine room above 20% LEL	X			Gas detection only required for ESD protected engine rooms
Gas detection on second detector in engine room above 20% LEL	X		X	Gas detection only required for ESD protected engine rooms. Is also to lead to disconnection of not certified safe electrical equipment in engine room
Loss of ventilation in duct between tank and engine room ⁵⁾	X		X ³⁾	
Loss of ventilation in duct inside engine room ⁵⁾	X		X ³⁾	If double pipe fitted in engine room
Loss of ventilation in engine room	X		X	ESD protected engine rooms only
Fire detection in engine room	X		X	
Abnormal gas pressure in gas supply pipe	X		X ³⁾	
Failure of valve control actuating medium	X		X ⁴⁾	Time delayed as found necessary
Automatic shutdown of engine (engine failure)	X		X ⁴⁾	
Emergency shutdown of engine manually released	X		X	
Excess flow in gas supply piping to ESD protected engine room and for high pressure gas supply	X		X	

1) Automatic shutdown of gas supply to engine room has different requirements for high and low pressure gas with regard to valve action. See D101 to D103.

2) If the tank is supplying gas to more than one engine and the different supply pipes are completely separated and fitted in separate ducts and with the master valves fitted outside of the duct, only the master valve on the supply pipe leading into the duct where gas is detected shall close.

3) This parameter shall not lead to shutdown of gas supply for single fuel gas engines, only for dual fuel engines.

4) Only double block and bleed valves to close.

5) If the duct is protected by inert gas (see Sec.3 E101) then loss of inert gas overpressure shall lead to the same actions as given in this table.

SECTION 7 COMPRESSORS AND GAS ENGINES

A. Gas Compressors

A 100 General

101 The fuel gas compressor shall be fitted with accessories and instrumentation necessary for efficient and reliable function.

102 The gas compressor and fuel gas supply shall be arranged for manual remote emergency stop from the following locations:

- the cargo control room (relevant for cargo ships only)
- navigation bridge
- engine control room
- fire control station.

A 200 Vibrations

201 The possibility for fatigue problem of the high-pressure gas piping due to vibration caused by the high-pressure gas compressor must be considered. Such vibrations may be caused by unbalanced forces in the compressor itself, by resonant vibrations in the piping system or by resonance in the gas column of the gas discharge lines. Calculations may be required to verify that resonance problems will not occur.

B. Gas Engine Design

B 100 General

101 The exhaust receiver shall be equipped with explosion relief ventilation sufficiently dimensioned to prevent excessive explosion pressures in the event of ignition failure of one cylinder followed by ignition of the unburned gas in the receiver.

102 The explosion venting shall be led outside the machinery space.

103 As an alternative to explosion venting, documentation showing that the exhaust system has sufficient strength to contain the worst case explosion can be accepted.

104 When gas is supplied in a mixture with air via a common inlet manifold, explosion relief venting of the manifold is to be arranged; alternatively the manifold shall be of sufficient strength to withstand an explosion.

B 200 Functional requirements dual fuel engines

201 Start, normal stop and low power operation shall be on

oil fuel only. Gas injection shall not be possible without a corresponding pilot oil injection.

In case of shut-off of the gas fuel supply, the engines shall be capable of continuous operation by oil fuel only.

202 Changeover to and from gas fuel operation is only to be possible at a power level where it can be done with acceptable reliability as demonstrated through testing. On completion of preparations for changeover to gas operation including checks of all essential conditions for changeover, the changeover process itself shall be automatic. On power reduction the changeover to oil fuel shall be automatic (compressor and auxiliaries may continue to run unloaded).

203 On normal shutdown as well as emergency shutdown, gas fuel supply shall be shut off not later than simultaneously with the oil fuel. Shut off of the gas fuel shall not be dependent on the shut off of the oil fuel.

204 Firing of the gas-air mixture in the cylinders shall be initiated by injection of pilot fuel. The amount of pilot fuel fed to each cylinder shall be sufficient to ensure a positive ignition of the gas mixture. It shall not be possible to shut off the supply pilot fuel without first or simultaneously closing the gas supply to each cylinder or to the complete engine.

B 300 Functional requirements gas-only engines

301 The starting sequence must be such that fuel gas is not admitted to the cylinders until ignition is activated and the engine has reached a minimum rotational speed.

302 If ignition has not been detected by the engine monitoring system within 10 s after opening of gas injection valve the gas supply shall be automatically shut off and the starting sequence terminated.

303 When restarting after a failed start attempt admission of fuel gas to the cylinders shall not be possible before the exhaust gas system has been purged with a volume of air at least equal to 3 times the volume of the exhaust gas system before the turbocharger(s). Purging may be carried out through for example running the engine on starting air for a predetermined number of revolutions.

B 400 Design of on-engines piping on gas-only engines

401 The gas shall be fed to each cylinder via a special gas valve. For small engines gas feed to a common manifold may be considered.

SECTION 8

MANUFACTURE, WORKMANSHIP AND TESTING

A. Gas Tanks

A 100 *Manufacture and testing*

101 *Tests related to welding and tank testing shall be in accordance with the Rules for Classification of Ships, Pt.5 Ch.5 Sec.5 K, L, M, and N.*

B. Gas Piping Systems

B 100 Gas pipes

101 The gas pipes shall be tested as given in the Rules for Classification of Ships, Pt.5 Ch.5 Sec.6 C600 and C700. Butt welded joints of high-pressure gas pipes and gas supply pipes in ESD protected engine rooms shall be subjected to 100% ra-

diographic testing.

B 200 Ducting

201 If the gas piping duct contains high-pressure pipes the ducting shall be pressure tested to at least 10 bar.

B 300 Valves

301 Each type of valve to be used at working temperatures below minus 55°C shall be prototype tested as given in the Rules for Classification of Ships, Pt.5 Ch.5 Sec.6 C801.

B 400 Expansion bellows

401 Expansion bellows intended for use in gas systems shall be prototype tested as given in the Rules for Classification of Ships, Pt.5 Ch.5 Sec.6 C802.