

SQL Direct Installation Guide

Disclaimer

Information of a technical nature, and particulars of the product and its use, is given by AVEVA Solutions Ltd and its subsidiaries without warranty. AVEVA Solutions Ltd and its subsidiaries disclaim any and all warranties and conditions, expressed or implied, to the fullest extent permitted by law.

Neither the author nor AVEVA Solutions Ltd, or any of its subsidiaries, shall be liable to any person or entity for any actions, claims, loss or damage arising from the use or possession of any information, particulars, or errors in this publication, or any incorrect use of the product, whatsoever.

Copyright

Copyright and all other intellectual property rights in this manual and the associated software, and every part of it (including source code, object code, any data contained in it, the manual and any other documentation supplied with it) belongs to AVEVA Solutions Ltd or its subsidiaries.

All other rights are reserved to AVEVA Solutions Ltd and its subsidiaries. The information contained in this document is commercially sensitive, and shall not be copied, reproduced, stored in a retrieval system, or transmitted without the prior written permission of AVEVA Solutions Ltd. Where such permission is granted, it expressly requires that this Disclaimer and Copyright notice is prominently displayed at the beginning of every copy that is made.

The manual and associated documentation may not be adapted, reproduced, or copied, in any material or electronic form, without the prior written permission of AVEVA Solutions Ltd. The user may also not reverse engineer, decompile, copy, or adapt the associated software. Neither the whole, nor part of the product described in this publication may be incorporated into any third-party software, product, machine, or system without the prior written permission of AVEVA Solutions Ltd, save as permitted by law. Any such unauthorised action is strictly prohibited, and may give rise to civil liabilities and criminal prosecution.

The AVEVA products described in this guide are to be installed and operated strictly in accordance with the terms and conditions of the respective license agreements, and in accordance with the relevant User Documentation. Unauthorised or unlicensed use of the product is strictly prohibited.

First published September 2007

© AVEVA Solutions Ltd, and its subsidiaries

AVEVA Solutions Ltd, High Cross, Madingley Road, Cambridge, CB3 0HB, United Kingdom

Trademarks

AVEVA and Tribon are registered trademarks of AVEVA Solutions Ltd or its subsidiaries. Unauthorised use of the AVEVA or Tribon trademarks is strictly forbidden.

AVEVA product names are trademarks or registered trademarks of AVEVA Solutions Ltd or its subsidiaries, registered in the UK, Europe and other countries (worldwide).

The copyright, trade mark rights, or other intellectual property rights in any other product, its name or logo belongs to its respective owner.

SQL Direct Installation Guide

Contents	Page
----------	------

Installation Guide

About this Guide	1:1
Scope of this Guide	1:1
Installing SQL Direct	2:1
Dependencies	2:1
Procedure for Installing AVEVA SQL Direct	2:1
Uninstalling Old Versions of SQL Direct	2:1
Installing the New Version of SQL Direct	2:3

1 About this Guide

1.1 Scope of this Guide

This guide tells you how to install SQL Direct on a PC running Microsoft Windows XP or later.

For information about training courses, see AVEVA's worldwide sales and support offices, see the Customer Support pages on our website at: <http://www.aveva.com/location>.

2 Installing SQL Direct

2.1 Dependencies

To install SQL Direct you must have the following:

- A PC running Microsoft Windows XP Professional or later.
- A file-system configured as NTFS.
- Either the AVEVA Plant or AVEVA Marine group of products must be pre-installed and correctly configured.
- A correctly installed Browser application such as Internet Explorer, Firefox, or Opera.

Additionally, to run SQL Direct you need a license file for every machine upon which you wish to run it, and a correctly installed and configured installation of Flexman 4.1.

Refer to the *Flexman 4.1 Installation and Configuration Guide* for more information on how to install and configure Flexman 4.1.

Contact AVEVA Customer Services to obtain a valid SQL Direct License.

2.2 Procedure for Installing AVEVA SQL Direct

Previous versions of SQL Direct should be removed prior to installation of the latest release. To do this, follow steps 1 to 5 [Uninstalling Old Versions of SQL Direct](#).

If SQL Direct has not been previously installed, skip Steps 1 to 5 and begin at Step 6 which is at the beginning of [Installing the New Version of SQL Direct](#).

2.2.1 Uninstalling Old Versions of SQL Direct

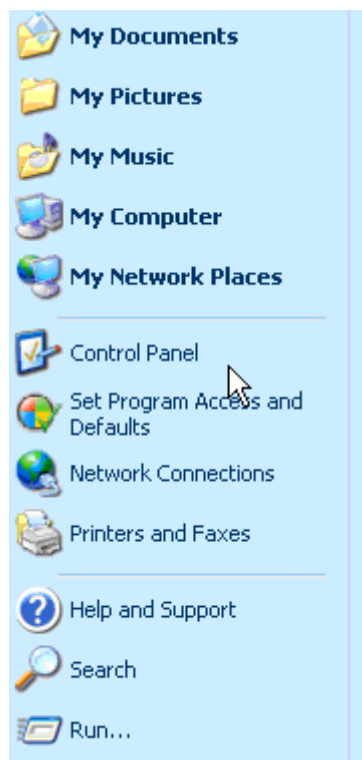
To uninstall previous versions of SQL Direct, use the native Windows Control Panel Add/Remove Software utility.

1. Click on the **Start** button in the bottom-left corner of your display:

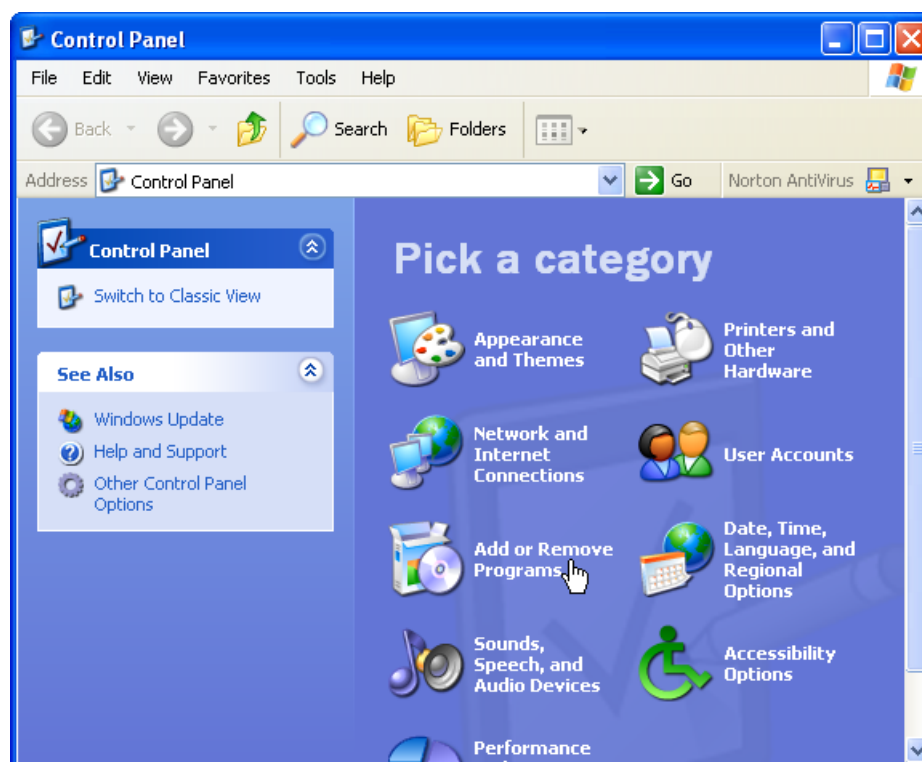


2. Select the **Control Panel** option.

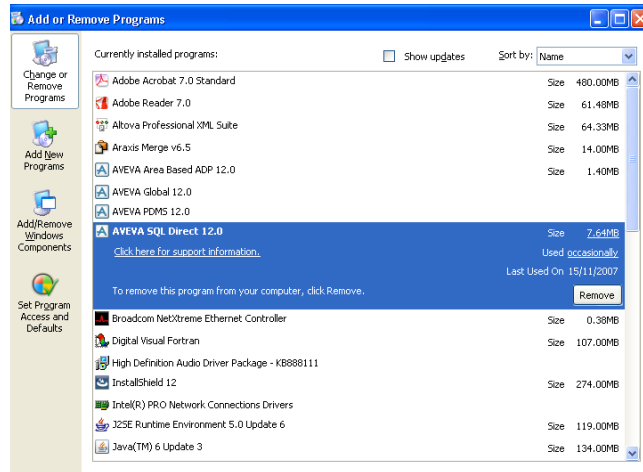
Note: The form you see might be slightly different because of the software you have installed and the display options you've chosen.



3. From the Control Panel, choose the **Add or Remove Programs** option:



4. Scroll down the list and locate the software you want to remove and click the **Remove** button.



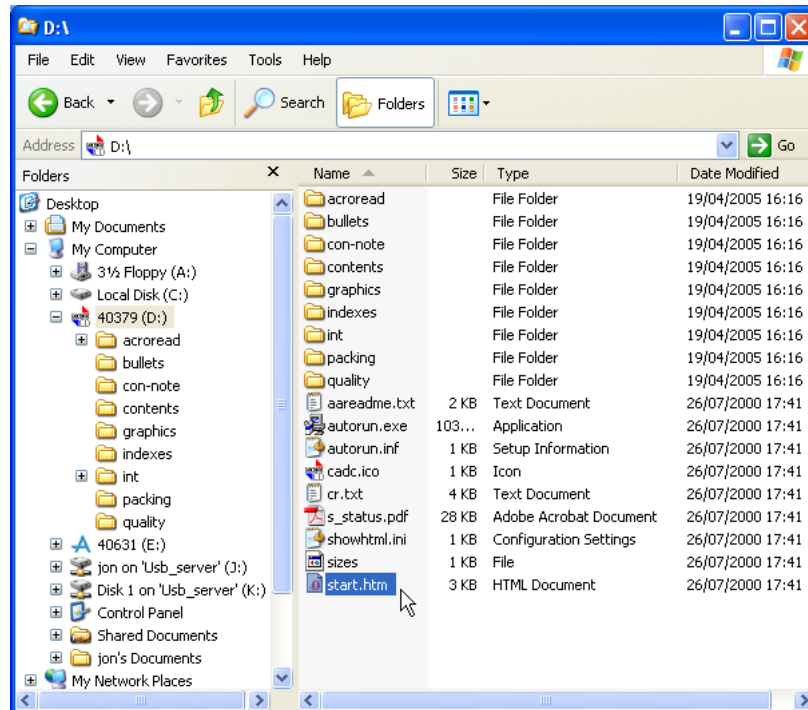
5. A Program Maintenance window will appear. On this screen select the remove radio button and follow the on-screen instructions to remove the software.

2.2.2 Installing the New Version of SQL Direct

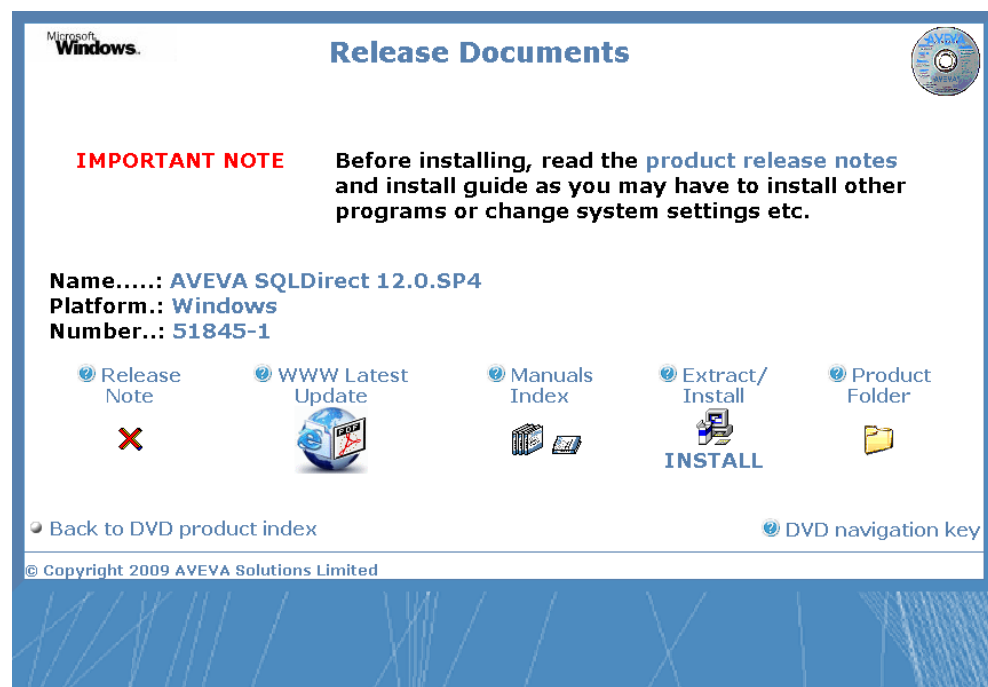
6. Make sure you close any other applications you have running
7. Insert the installation DVD. If the autostart feature on your PC is working correctly, your browser will automatically load the correct file on the disc and display the Installation menu:

Note: The exact appearance of forms and screens may be different depending on which browser you are using. The forms used in this manual are from Microsoft Internet Explorer 7.

8. If you didn't have your browser running, or the page failed to load, use Windows Explorer to navigate to the disc in DVD ROM drive and double-click on the file `start.htm`; alternatively, right-click and choose your browser from the **Open With** option on the popup menu.



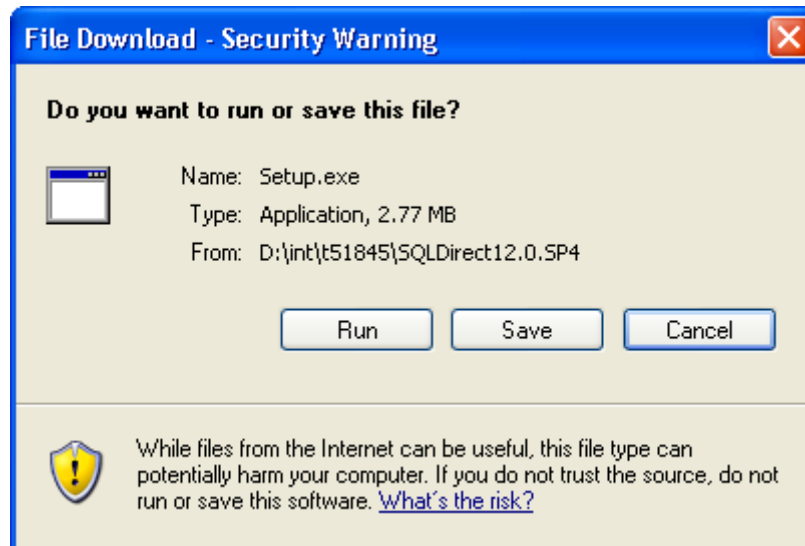
9. SQL Direct is supplied on the DVD as part of a suite of applications. Click on “AVEVA SQLDirect” to display the following screen:



10. On this page you have the opportunity to read the release notes in PDF format. If you want to read the notes in PDF format, you will need to have Adobe Acrobat Reader or other PDF reader installed.

When you are ready to install the software, click the **Install**.

11. You will get the following dialog box asking you to confirm that you want to install the software. Click **Run** to continue.

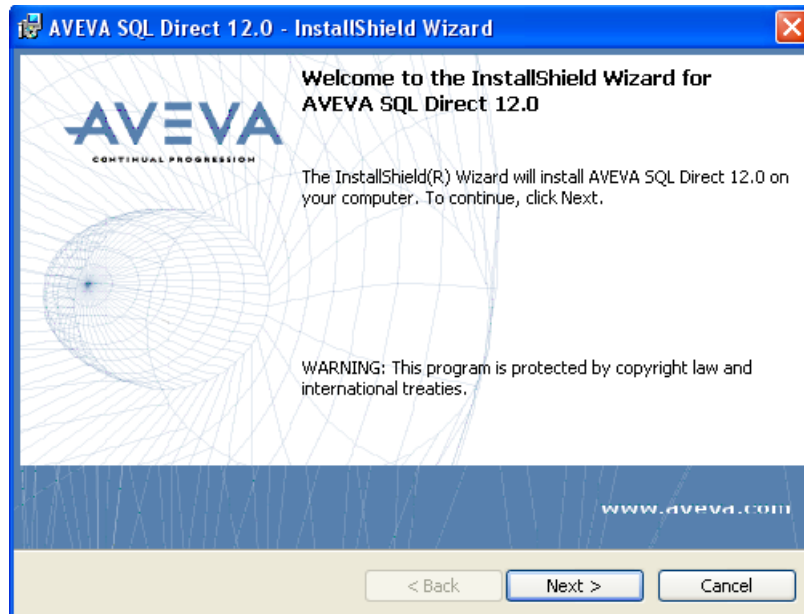


12. On the File Download form click **Run** to install the software from the Disk.

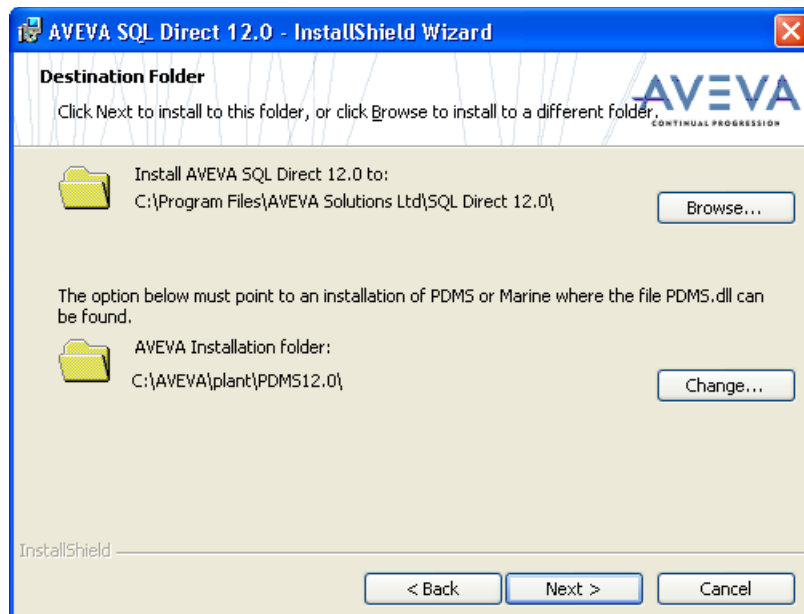
Depending on the version of Microsoft Windows the following additional Security Warning may appear, if so click **Run**.



13. After a short duration a welcome screen will appear. On this and subsequent screens a cancel button is displayed. If cancel is selected at any stage a popup will be displayed prompting for confirmation. Partially installed files are removed and the installation process is stopped if cancel is selected.



14. Click **Next** to begin the install process.



15. This form gives the option of changing the default install path. If left unchanged SQL Direct will install in the following location:

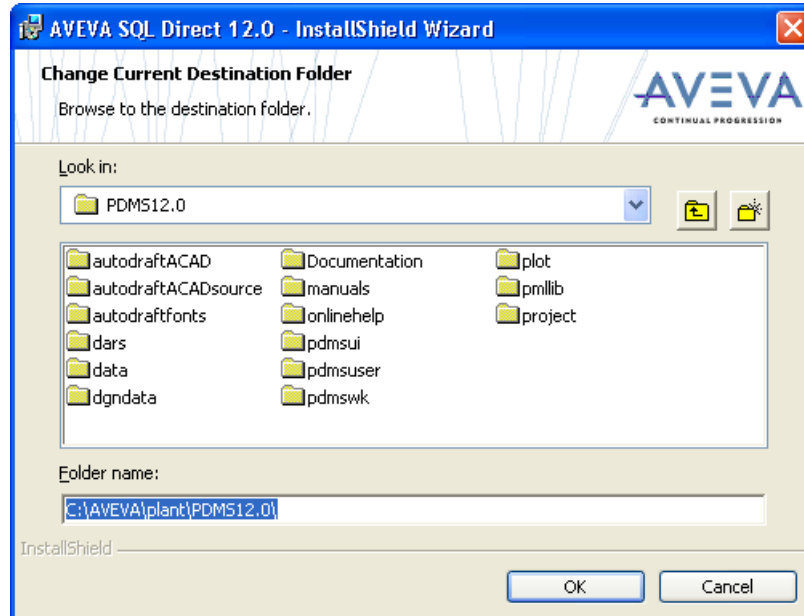
C:\Program Files\AVEVA Solutions Ltd\SQL Direct 12.0\

For the installation to be successful the user must also choose the path to the PDMS.dll file. This will be located in the default installation folder of either AVEVA Plant or AVEVA Marine products. This will be either:

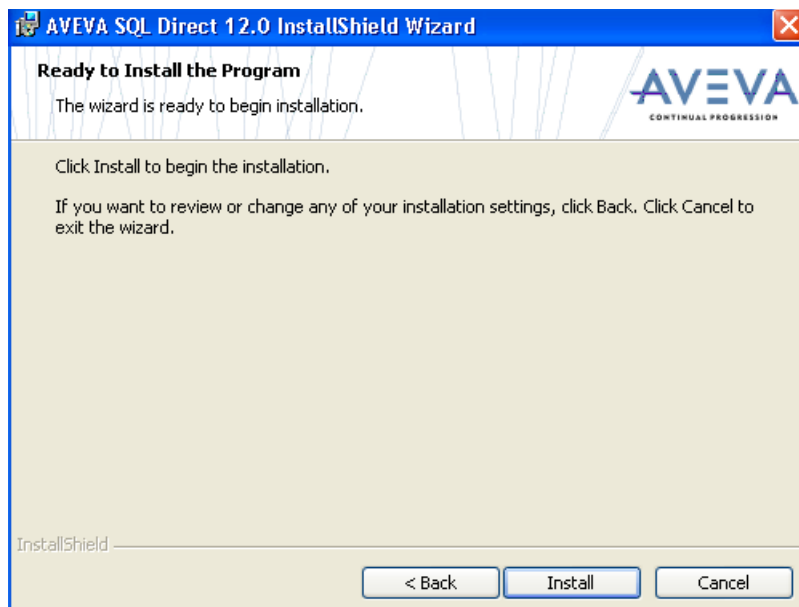
C:\AVEVA\PLANT\PDMS<version> or C:\AVEVA\MARINE\OH<version>

Where <version> is the version number of the Plant or Marine product installed. In most cases the SQL Direct install wizard will automatically detect the path.

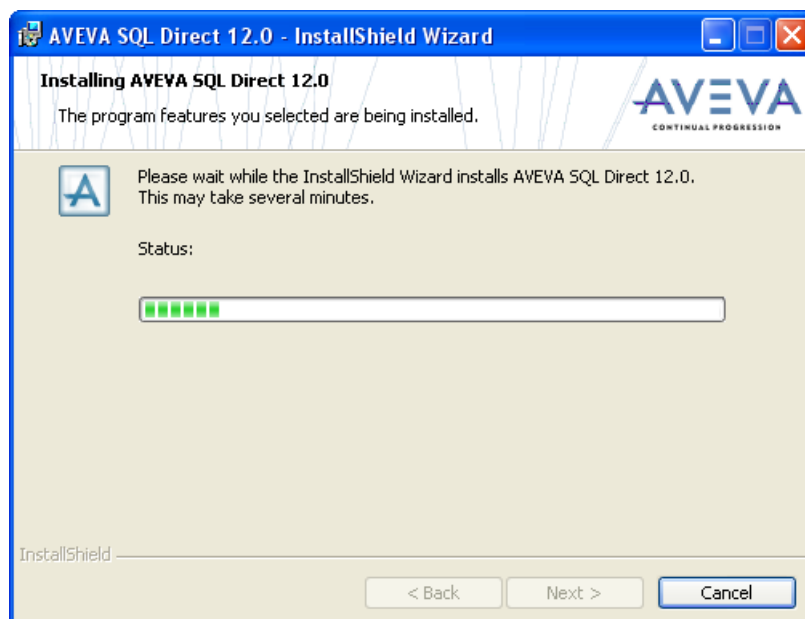
In each case selecting Browse or Change will open the following file browser dialogue.



16. After confirming or choosing an install path the following confirmation screen will appear. This is the last step before the actual files are copied to the previously selected destination. At this point you have the opportunity to go back and amend the install path or click to next to commit the installation.



17. Clicking install at this point will begin an automated process of copying the SQL Direct files to the previously selected destination. During the installation a progress bar will display the status of the install process. As in previous steps it is possible to cancel the install process.



18. When the install is complete the following confirmation screen is displayed. SQL Direct is now installed on your system. Click **Finish** to close the installation application.

