



图纸 分发			
分发处		分发数	
汉字	ENGLISH	FW	FC
综合设计	Integated Design Division	1	1
船体构造设计	Hull Structure Team		
船体生产设计	Hull Production Team	6	6
船装设计	Hull Outfitting Design	2	2
船室设计	Accommodation Design		
机装详细设计	Machinery Detail Design	2	2
机装生产设计	Machinery Production Design	3	3
电装设计	Electrical Design		
先行舾装	Preoutfitting Division		2
E/R 舾装	E/R Outfitting		2
船室生产	Accommodation Production		
试航部	Trial Cruise Division		
采购管理 2	Procurement Team 2		
品质经营	Quality Assurance		2
品质物流(镇海)	Logistics Team (Jinhae)		
轴舵设计(保管)	Shaft & Rudder Design	1	1
合 计 (Total)		15	21
<input type="checkbox"/>	For Working		
<input type="checkbox"/>	For Construction		
<input type="checkbox"/>	For Revision		

THIS DRAWING OR DOCUMENT IS THE PROPERTY OF THE SAMJIN SHIPBUILDING INDUSTRIES CO., LTD. AND MUST NOT BE PARTIALLY OR WHOLLY COPIED OR USED FOR ANY OTHER PURPOSE WITHOUT PRIOR WRITTEN PERMISSION OF SAMJIN SHIPBUILDING INDUSTRIES CO., LTD

HULL NO. 1009~1012 1031~1032		PROJECT TPC KOREA 33,500 DWT LOG/BULK CARRIER	
APPD BY M. Y. Park		TITLE PROPELLER, RUDDER & R-STOCK FITTING & REMOVAL PLAN	
CHKD BY J. S. Lee			
DWN BY J. H. Park (Ext. : 0226)		TEL +86) 0631-538-0204	TOTAL 5 SHEET(S) WITH COVER
 Samjin Shipbuilding Industries Co., Ltd.		DEPT RUDDER & SHAFT DESIGN TEAM	DWG NO. DA300M717
		DATE DEC. 07, 2008	SCALE EACH REV. NO. A



HISTORY PLAN

HULL NO.

1009~1012
1031~1032

2

DWG. NO.

DA300M717

5

DATE

REV.
NO.

DESCRIPTION

DWN

CHKD

APPD

2008.12.24.

A

SUBMITTED TO OWNER FOR APPROVAL.

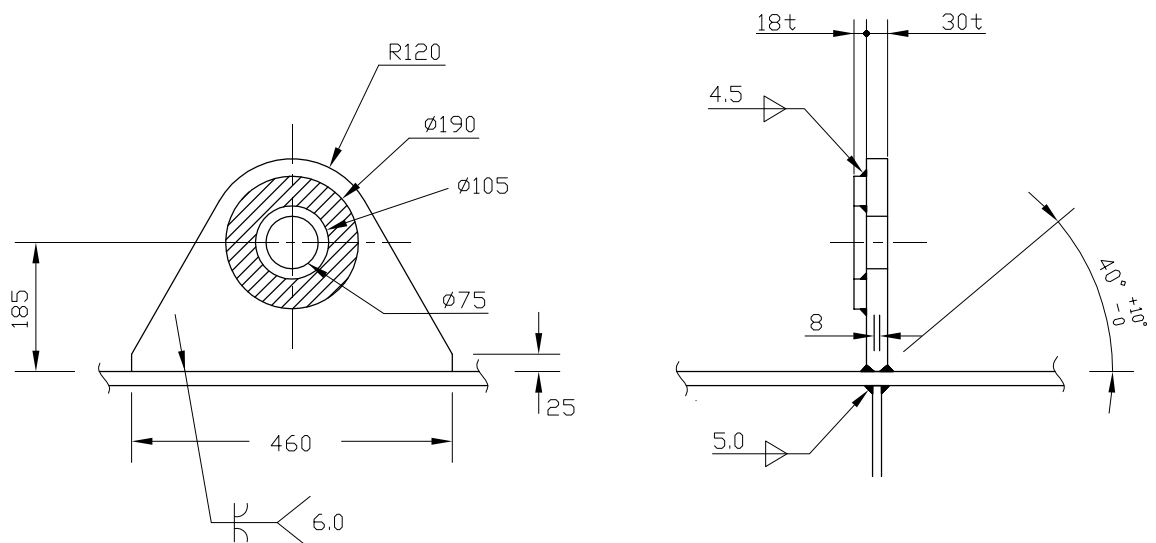
J.H PARK

ISSUED FOR WORKING.

J.H PARK

LIFTING EYE DETAIL

SAFE WORKING LOAD: 30 Tons



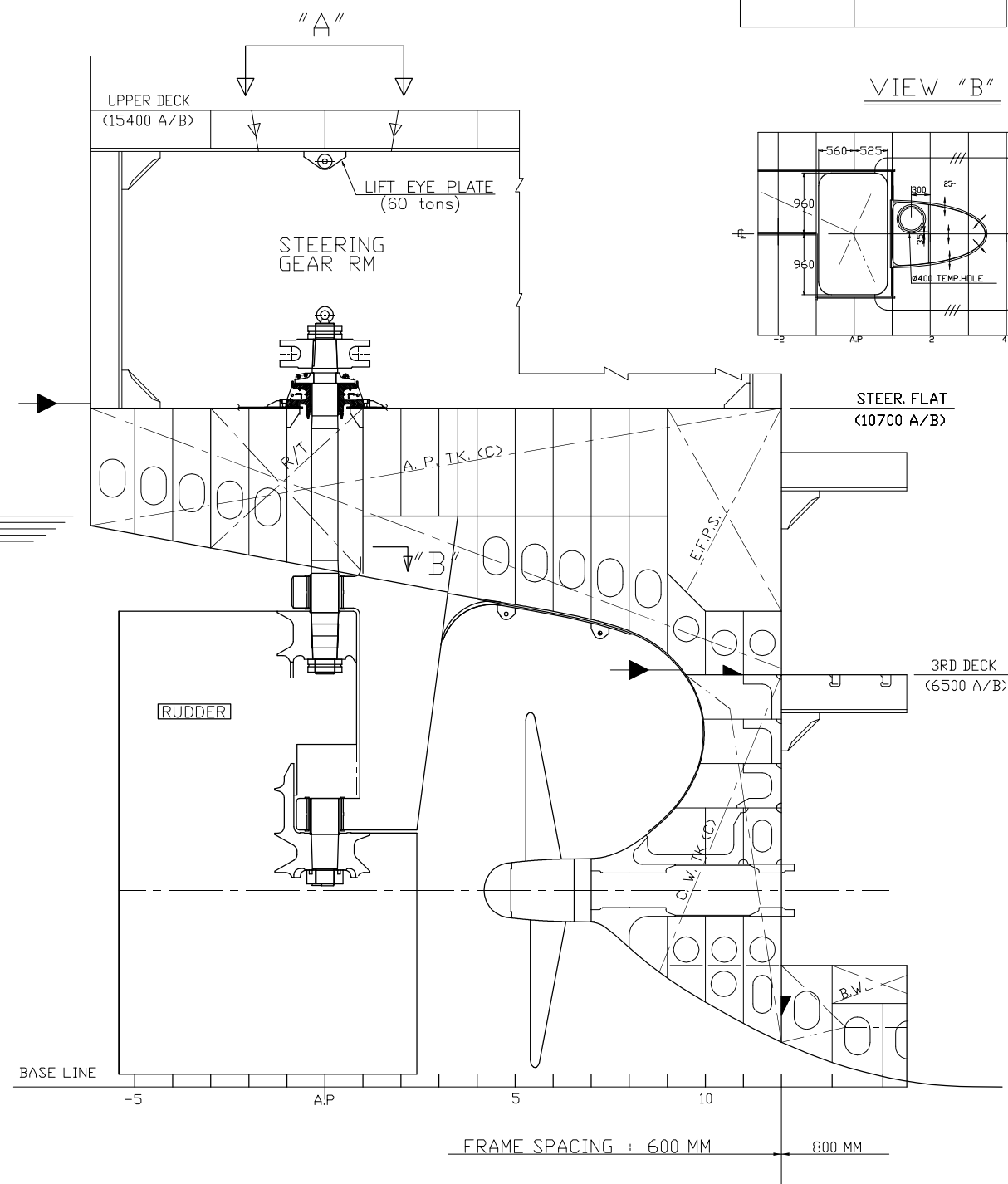
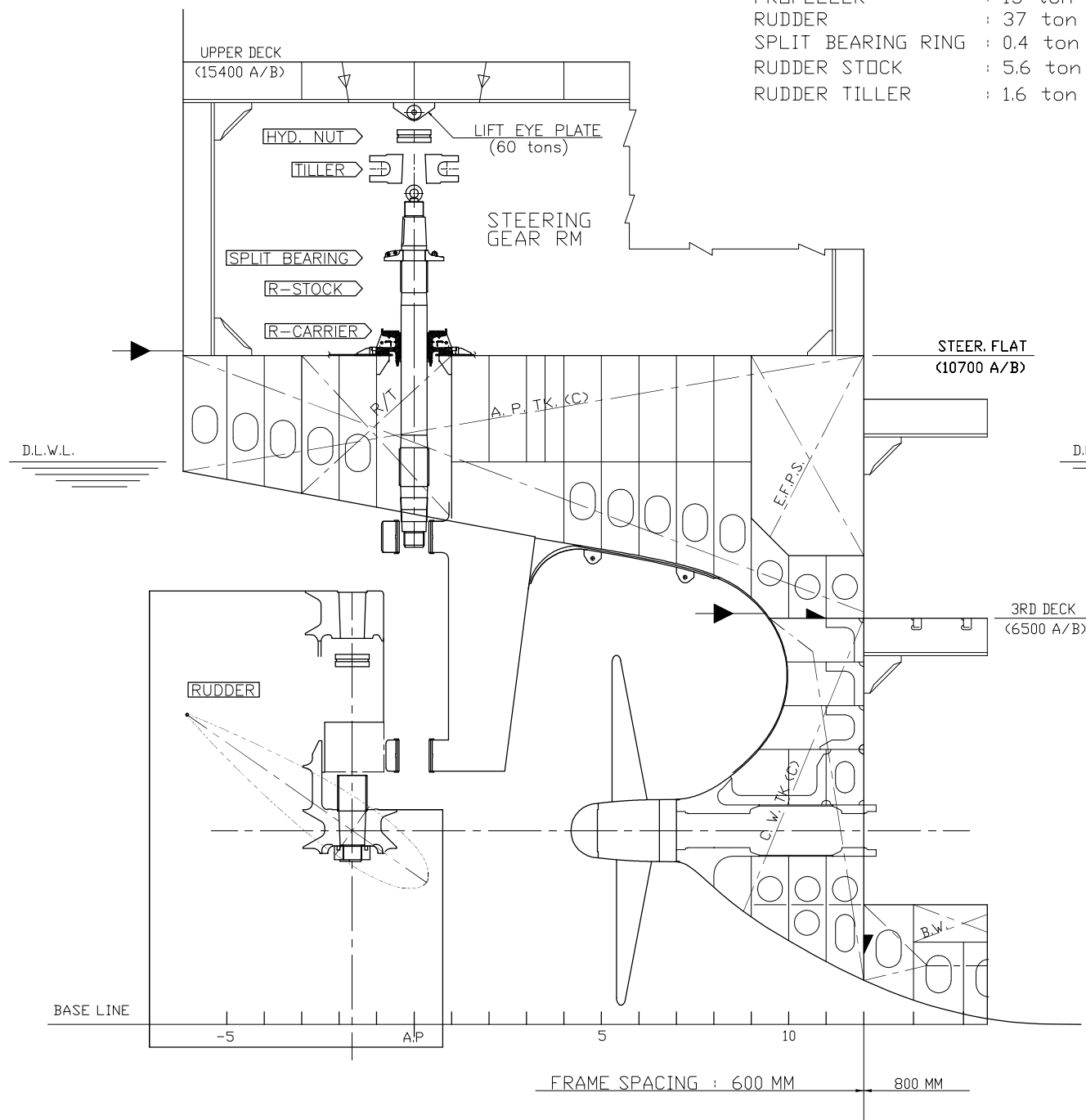
PROPELLER, RUDDER & R/STOCK FITTING PLAN

**** NOTE:**

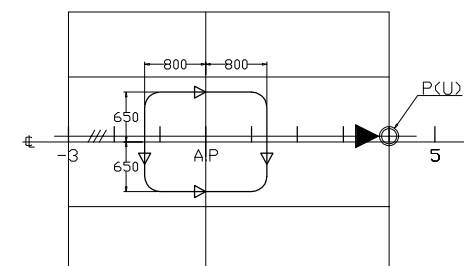
- 1) BREAKING LOAD OF SLING WIRE-60 tons
(吊索最大负荷为60吨.)
- 2) CHAIN BLOCKS MAY BE USED
(链可以被使用.)

**** WEIGHT OF :**

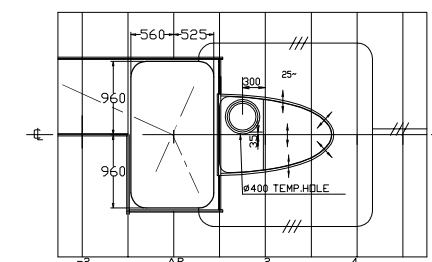
PROPELLER	: 15 ton
RUDDER	: 37 ton
SPLIT BEARING RING	: 0.4 ton
RUDDER STOCK	: 5.6 ton
RUDDER TILLER	: 1.6 ton



VIEW "A"



VIEW "B"



HULL NO.

1009~1012
1031~1032

DWG. NO.

DA300M717

SCALE

1/100

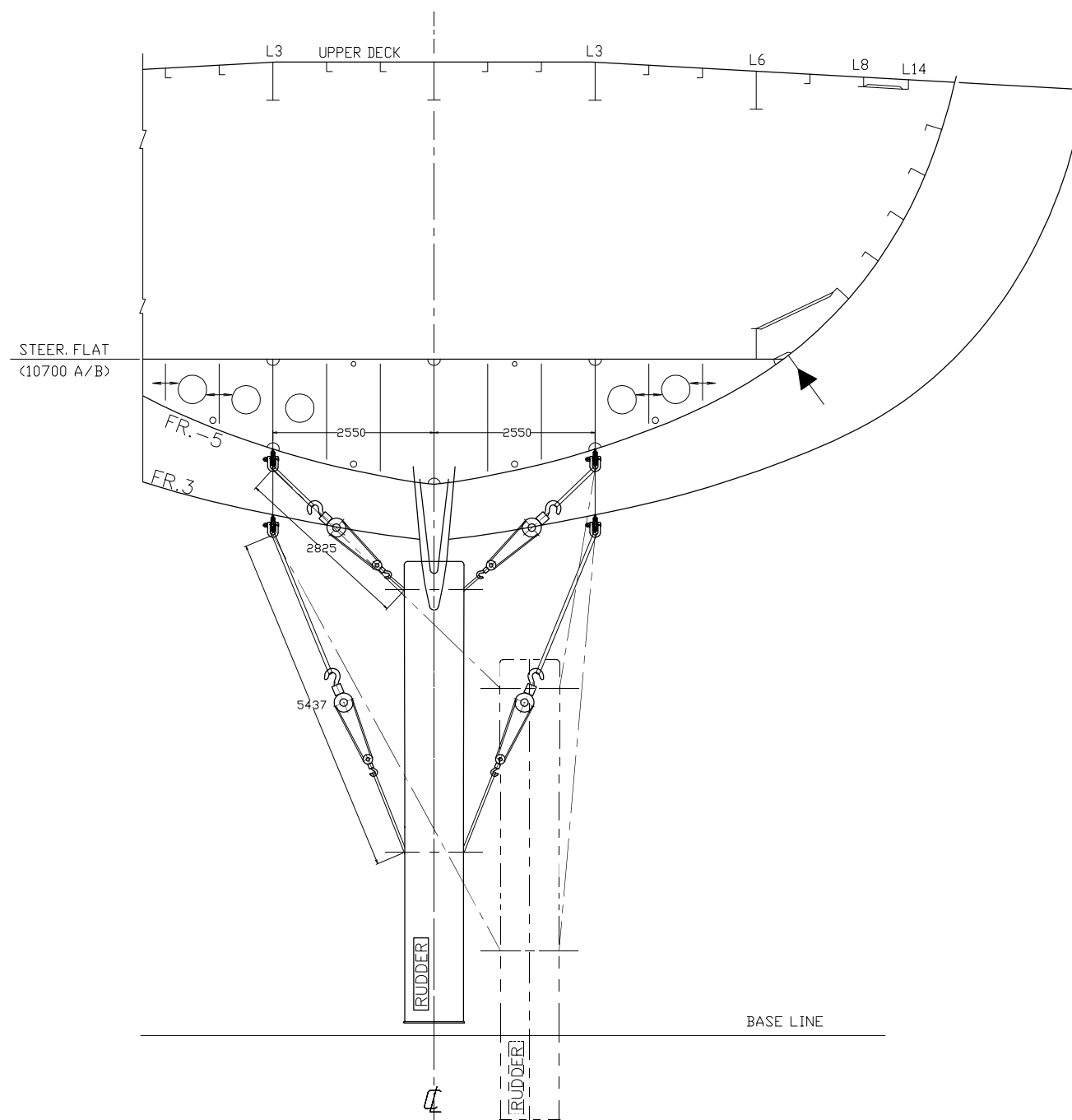
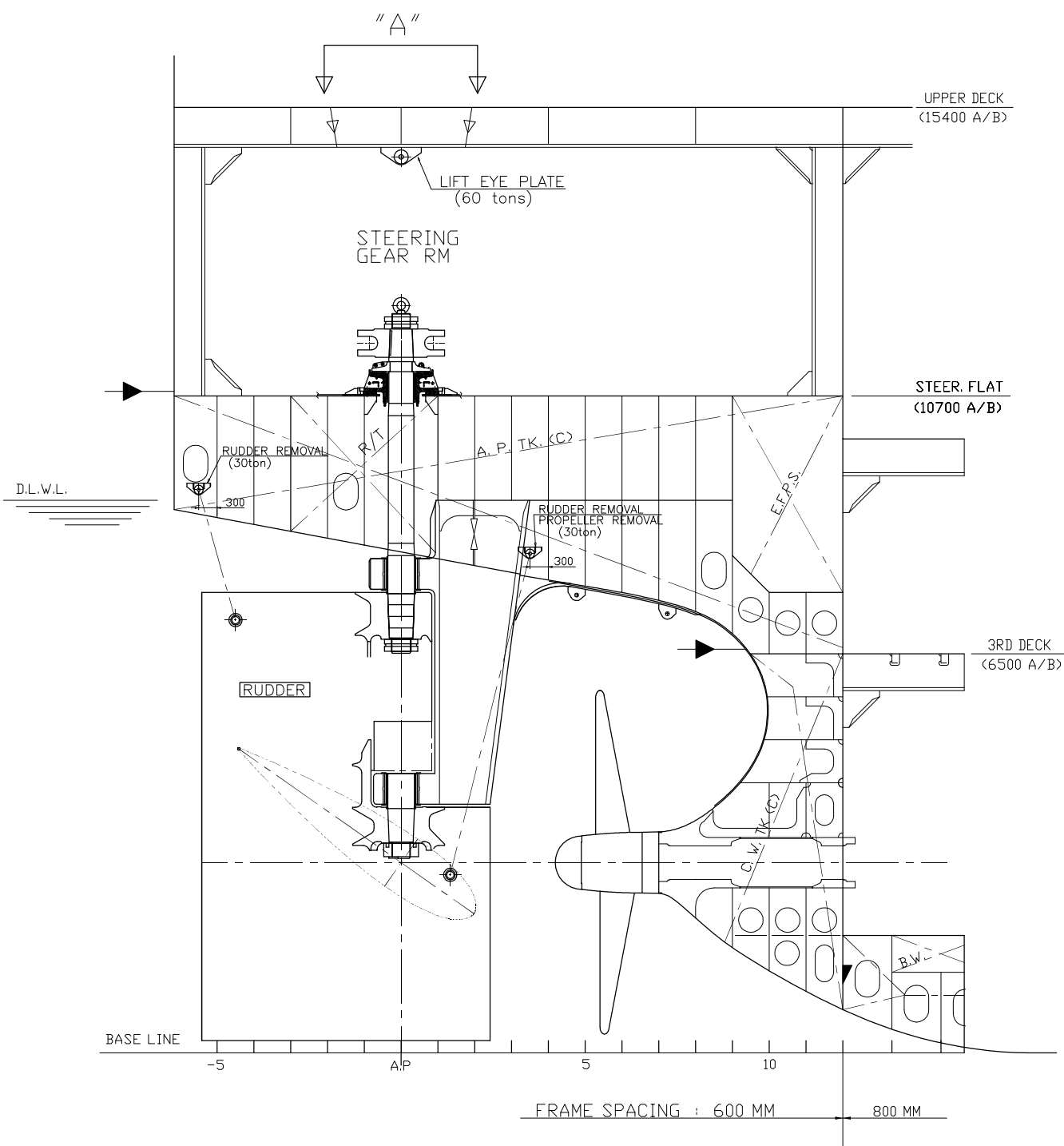
**PROPELLER, RUDDER & R-STOCK
FITTING & REMOVAL PLAN**

RUDDER REMOVAL PLAN

** APPROXIMATE LENGTH OF SLINGS :

FR.-5 : 2,900mm X 2 sets

FR.3 : 5,500mm X 2 sets



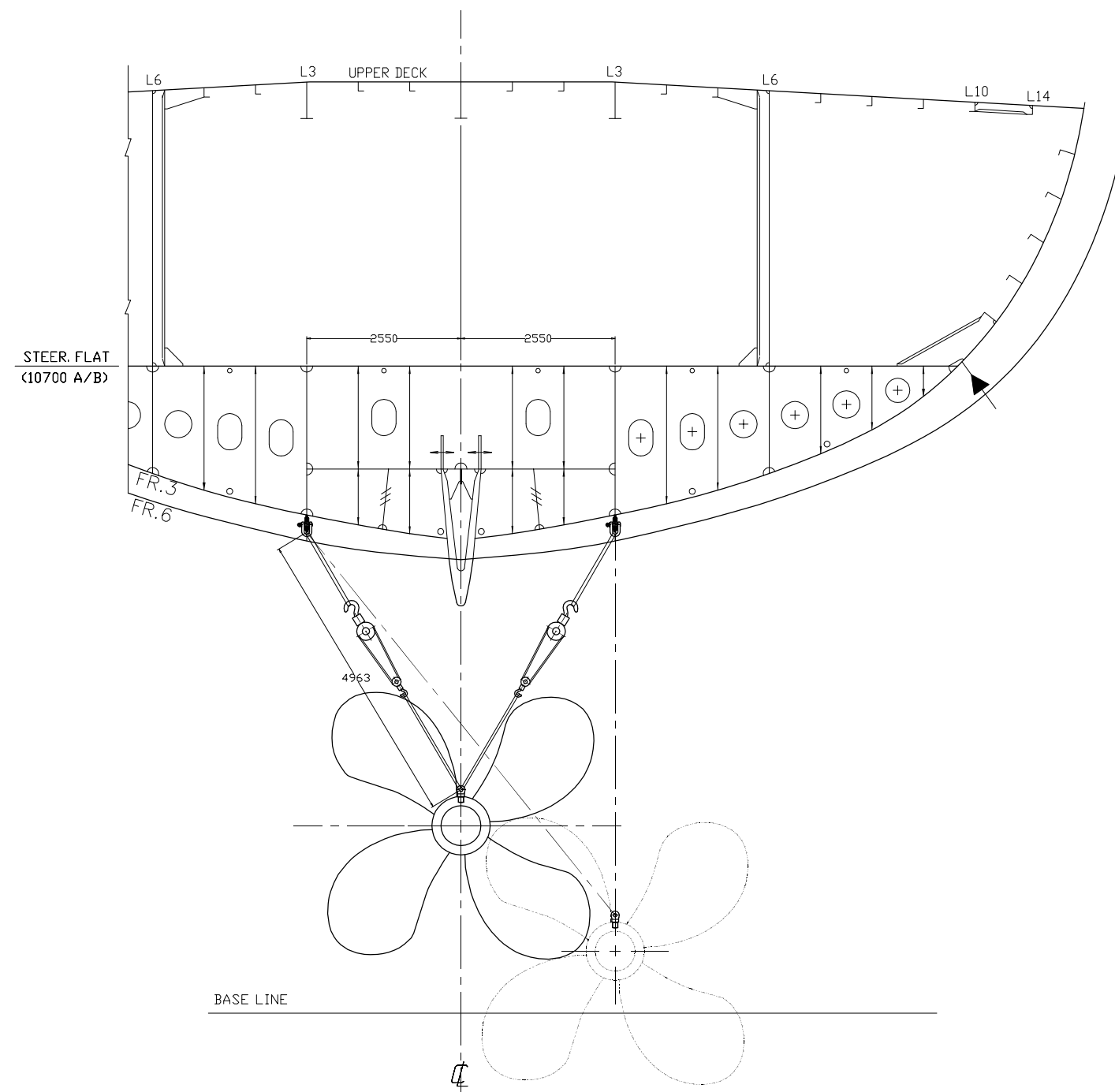
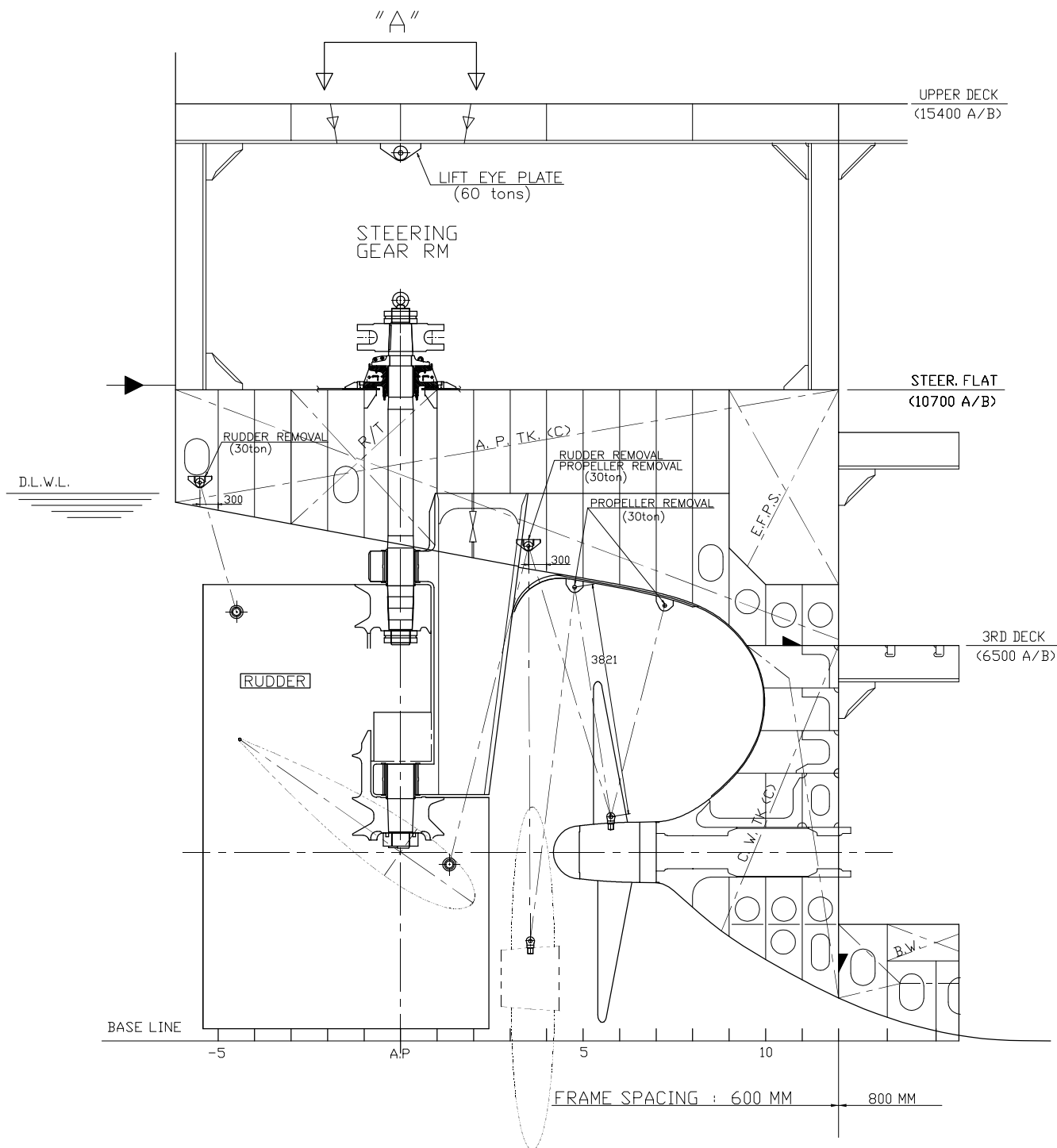
HULL NO.	1009~1012 1031~1032	PROPELLER, RUDDER & R-STOCK FITTING & REMOVAL PLAN
DWG. NO.	DA300M717	
SCALE	1/100	

PROPELLER REMOVAL PLAN

** APPROXIMATE LENGTH OF SLINGS :

FR.3 : 5,000mm X 2 sets

FR.5 : 3,900mm X 2 sets



HULL NO.	1009~1012 1031~1032	PROPELLER, RUDDER & R-STOCK FITTING & REMOVAL PLAN
DWG. NO.	DA300M717	
SCALE	1/100	