



图纸 分发			
分发处		分发数	
汉 字	ENGLISH	FW	FC
基本设计	Basic Design Team		
构造设计	Hull Structure Design Team		
船体设计	Hull Design Team		
船装设计	Hull Outfitting Design		
船室设计	Accommodation Design		
机装设计(详细)	Machinery Design(Detail)	1	1
机装设计(生产)	Machinery Design(Production)	1	
电装设计	Electrical Design		
先行舾装	Preoutfitting Division		2
机械舾装	Machinery Outfitting		2
船室生产	Accommodation Production		
试航部	Trial Cruise Division		2
管件资材采购	Pipe M. Procurement Team		
舾装品质管理	Outfitting Quality MGT.Team		2
搭载运营	Erection Operation Team		
电装team	Electrical Outfitting Team		
品质物流(镇海)	Logistics Team (Jinhae)		1
机装设计(轴舵)	Machinery Design(S&R)	1	1
合 计 (Total)		3	11
<input type="checkbox"/>	For Working		
<input type="checkbox"/>	For Construction		
<input checked="" type="checkbox"/>	For Revision		

HULL NO. 1009~1012, 1031~1032	PROJECT TPC KOREA 33,5K DWT LOG / BULK CARRIER		
APPD BY M. Y. Park	TITLE INTERMEDIATE SHAFT BEARING		
CHKD BY J. S. Lee			
CHKD BY J. H. Park (Ext. : 0133)			
DWN BY WÄRTSILÄ			
TEL +86) 0631-538-0204		TOTAL 7 SHEET(S) WITH COVER	
 Samjin Shipbuilding Industries Co.,Ltd.	DEPT MACHINERY OUTFITTING DESIGN TEAM	DWG NO: DV6330001	SCALE EACH
		DATE SEPT.01.2008	REV. NO. 1



1009~1012,
1031~1032

DV6330001

7

REV. NO.	DATE	D E S C R I P T I O N	DWN	CHKD	APPD
A	2008.09.23.	SUBMITTED TO OWNER FOR REFERENCE.	J.H PARK	 	
		ISSUED FOR WORKING.	J.H PARK	 	
O	2008.10.01.	ISSUED FOR CONSTRUCTION.	J.H PARK	 	
1	2009.04.20.	ADDED TO KNOCK PIN ON 4/7 PAGE.	J.H PARK	 	
		ISSUED FOR REVISION.	J.H PARK	 	

WORKING PLAN

工事用図

CUSTOMER
客 先

**SAMJIN SHIPBUILDING
INDUSTRIES CO.,LTD.**

SHIP No.
船 番

H1009/10/11/12/31/32

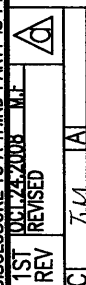
INTERMEDIATE SHAFT BEARING

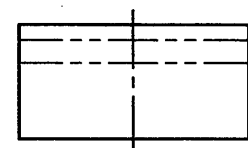
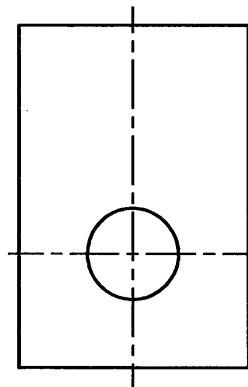
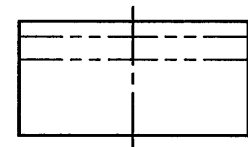
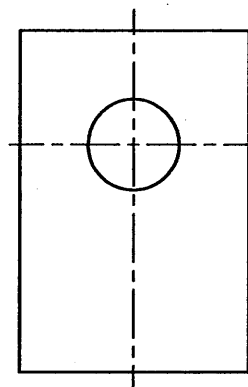
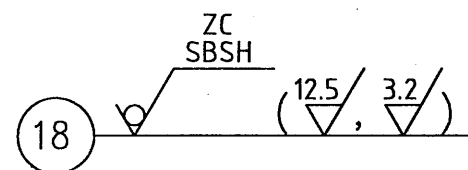
中 間 軸 受

Wärtsilä Japan, Ltd.

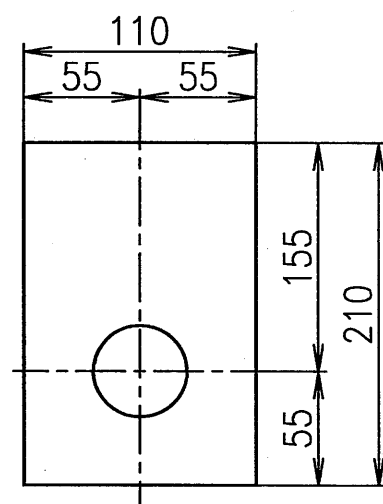
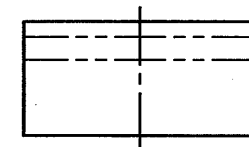
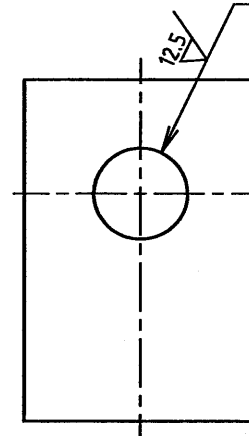
 **Japan Marine Technologies**

TOYAMA FACTORY
14-37, 7-Chome, Mukaishinjo-Machi,
Toyama, Japan 930-0916
TEL : (076) 451-3150
FAX : (076) 451-3161

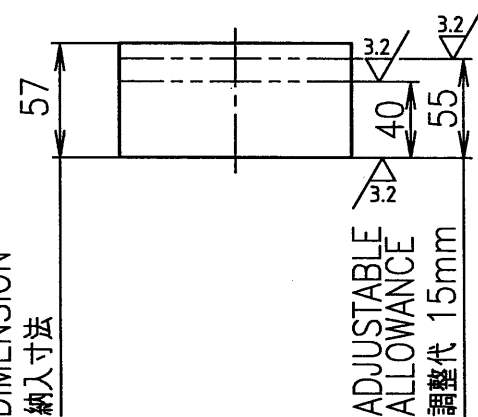




DRILL
4-45きり

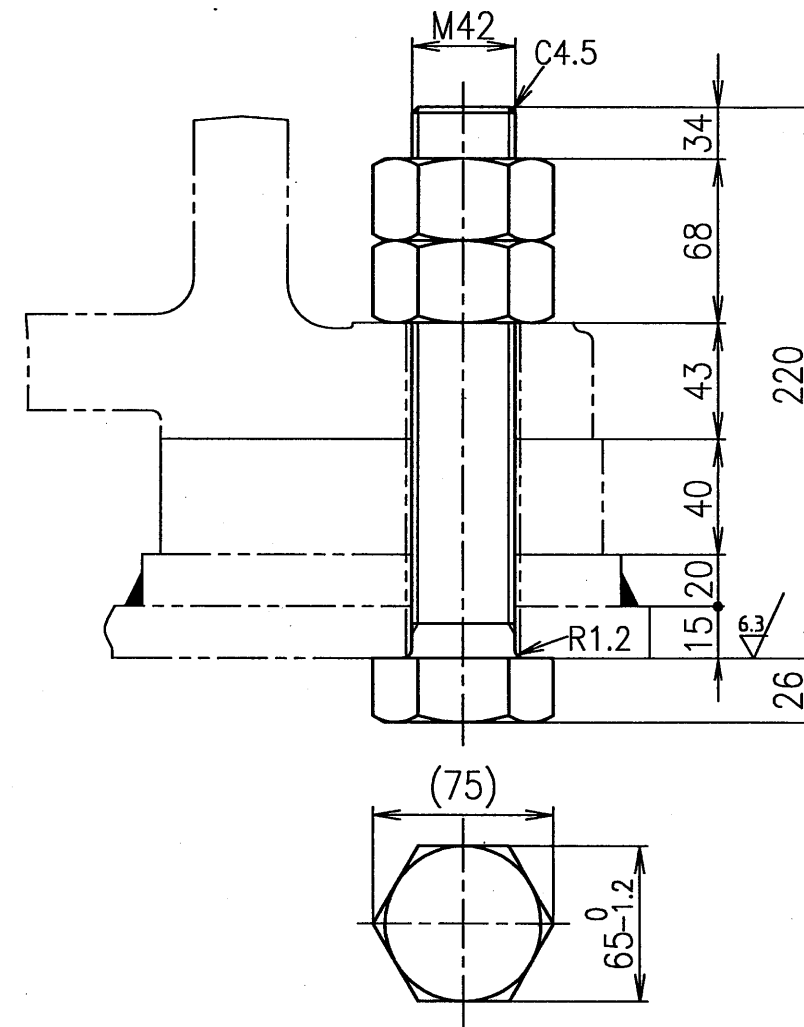
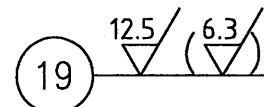


PREMACHINED
DIMENSION

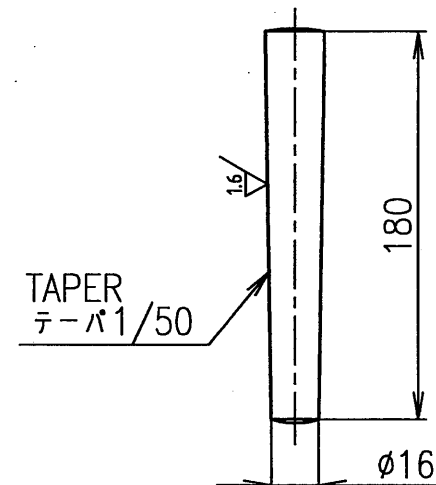
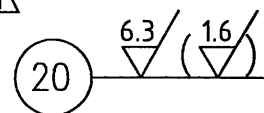


ADJUSTABLE
ALLOWANCE
調整代 15mm

△a



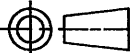

△a



BILL OF MAT'L

ITEM	REQ.	SIZE	MASS	MAT'L	DESCRIPTION
18	4 1SET		ABT 9.6 kg 1PC	CAST IRON FC200	CHOCK LINER チョックライナ (番号:5S)
19	4 1SET		ABT 3.2 kg 1PC	MILD STEEL SS400	SETTING BOLT 据付ボルト
	8 1SET	M42	ABT 0.7 kg 1PC	MILD STEEL SS400	HEX. HEAD NUT 六角ナット (形状区別:2種)
20	2 1SET		ABT 0.3 kg	CARBON STEEL S45C	KNOCK PIN ノックピン

REQ. 6SETS/6SHIPS

面の肌表示 SURFACE TEXTURE		普通公差 (機械加工) MACHINING TOLERANCE UNLESS OTHERWISE SPECIFIED		CUSTOMER		NO.	
JIS B 0031 (μmRa)				SAMJIN SHIPBUILDING INDUSTRIES CO., LTD.		H1009/10/11/12/31/32	
<div>✓▽✓</div> <div>三角法 THIRD ANGLE</div> <div></div>		寸 法 DIMENSION (mm)		公 差 TOLERANCE (mm)		Wärtsilä Japan, Ltd.  Japan Marine Technologies	
		0.5 以上 6 以下		± 0.1		TITLE CHOCK LINER / SETTING BOLT	
		6 以上 30 "		± 0.2		SIZE #430 チョックライナ / 据付ボルト	
		30 " 120 "		± 0.3		MAT'L DRAWN Y.YAMAGUCHI DATE MAY.14,2008 REFERENCE	
		120 " 400 "		± 0.5		MASS CHECKED T.HAYASE	
400 " 1000 "		± 0.8		SCALE NONE		APPROVED	
1000 " 2000 "		± 1.2		DWG. NO. LS1-043-1116a			
2000 " 4000 "		± 2.0					
ドリル径には適用しない NOT APPLICABLE TO DRILL HOLES		JIS B 0405-m					

REQ. 6-SETS/6SHIPS

MAIN NAME PLATE

主銘板

NUMBER PLATE

番号銘板

CABLE GLAND

ケーブルグランド

JIS F 8801 15c

TERMINAL BOX

端子箱 (COLOR:SILVER)

IP56/ADC

27x31.2 HEX.

SUS304

32x37 HEX.

G3/4

Cu-PACKING

銅パッキン

G1/2

PROTECTING TUBE

保護管

SUS304

PROTECTING WELL

保護筒

SUS304

TERMINAL

端子

GREASE

グリス

RESISTANCE ELEMENT

R100/R0=1.3850

Rated Value:Pt100Ω

抵抗値

Class:B-JIS '97



階級

Temp:0~100℃

温度

NOTE) THIS IS ABLE TO CHANGE THE
INTERNAL ELEMENT (PTR-N7) AT
FITTING STATE.記) 测温抵抗体を計測箇所に取り付けたままの状態
で内部素子 (PTR-N7) を取り替えることができます。

FILE:ZO-HAKO.002

5		DATE	MAY.14.2008	SCALE	N/S	3rd ANGLE PROJECTION	TITLE TYPE PTR-LN7 RESISTANCE BULB 测温抵抗体	
4		APPROVED		CHECKED	T.hayase	DRAWN		Y.YAMAGUCHI
3								
2								
1								
REVISION		BY	 Wärtsilä Japan, Ltd.  Japan Marine Technologies				DWG. NO. Z-A3-24292	
							PC-44307	

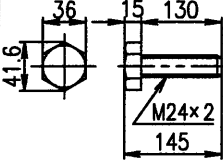


TYPE PTR-LN7
RESISTANCE BULB
测温抵抗体

DWG. NO. Z-A3-24292

SIZE #300 ~ 470 中間軸受 要具表

SHIP NO. | H1009/10/11/12/31/32

TOOL LIST FOR INTERMEDIATE SHAFT BEARING

NO.	NAME	SKETCH	MATERIAL	SUPPLY PER 1 SHIP		DRAWING		REMARKS
				WORK- ING	SPARE	NO.	PART NO.	
1	JACK BOLT ジャッキボルト		CARBON STEEL S45C-H	4		LS1-C043-0447α	24	
MFR'S NAME & ADDRESS		DRAWN Y.YAMAGUCHI	CHECKED T.hayase		APPROVED			
		 Wärtsilä Japan, Ltd.  Japan Marine Technologies						