





PLAN HISTORY

REV.NO.	DATE	DESCRIPTION	BY	CHK.	APP.	REMARK
	2008.10.30	SUBMITTED TO OWNER & CLASS APPROVAL.				
	2008.11.06	APPROVED BY OWNER WITHOUT COMMENT.				
	2008.12.02	APPROVED BY CLASS WITHOUT COMMENT.				
	2008.12.30	ISSUED FOR WORKING.				

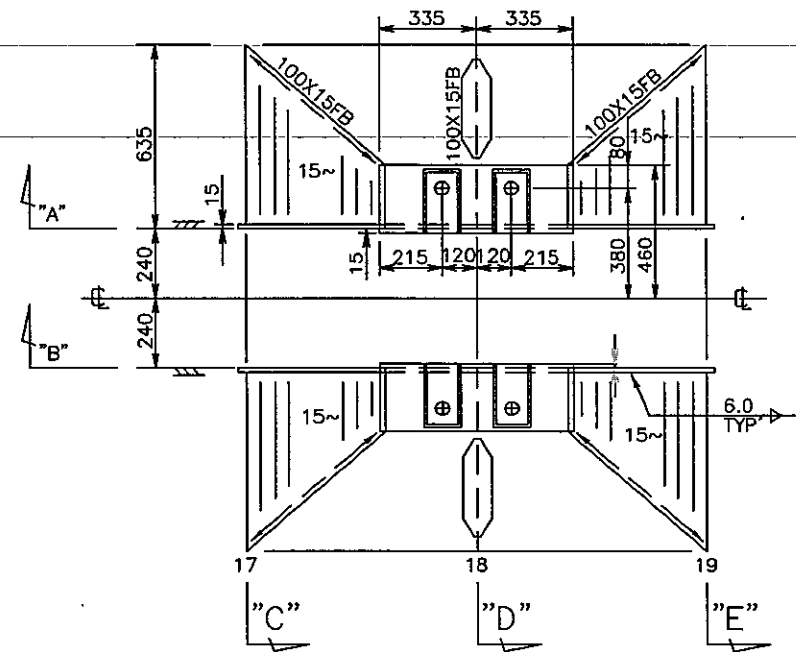
NOTES :

1. TOP OF SEAT TO BE PARALLEL TO BASE LINE.
2. MIN. THROAT THK. OF FILLET WELDING TO BE ~~4.5~~ EXC. SHOWN.
3. LOCATION : ON TANK TOP E/R
4. REF. DWG.
SHAFT'G ARR'T (DWG NO.:DA500M104)
5. MACHINERY WEIGHT ; 645 KG

HULL NO. 1009~1012, 1031~1034	PROJECT TPC KOREA 33,5K DWT LOG / BULK CARRIER		
APPD BY C. M. KIM	TITLE INTERMEDIATE SHAFT BEARING FOUNDATION		
CHKD BY			
DWN BY M. R. KIM	TEL 660 - 6621	TOTAL 3 SHEETS	
 Samjin Shipbuilding Industries Co., Ltd	DEPT. HULL DESIGN TEAM	DATE Oct. 30, 2008	
	DWN NO. DA511H100	SCALE 1/25	REV. NO. 

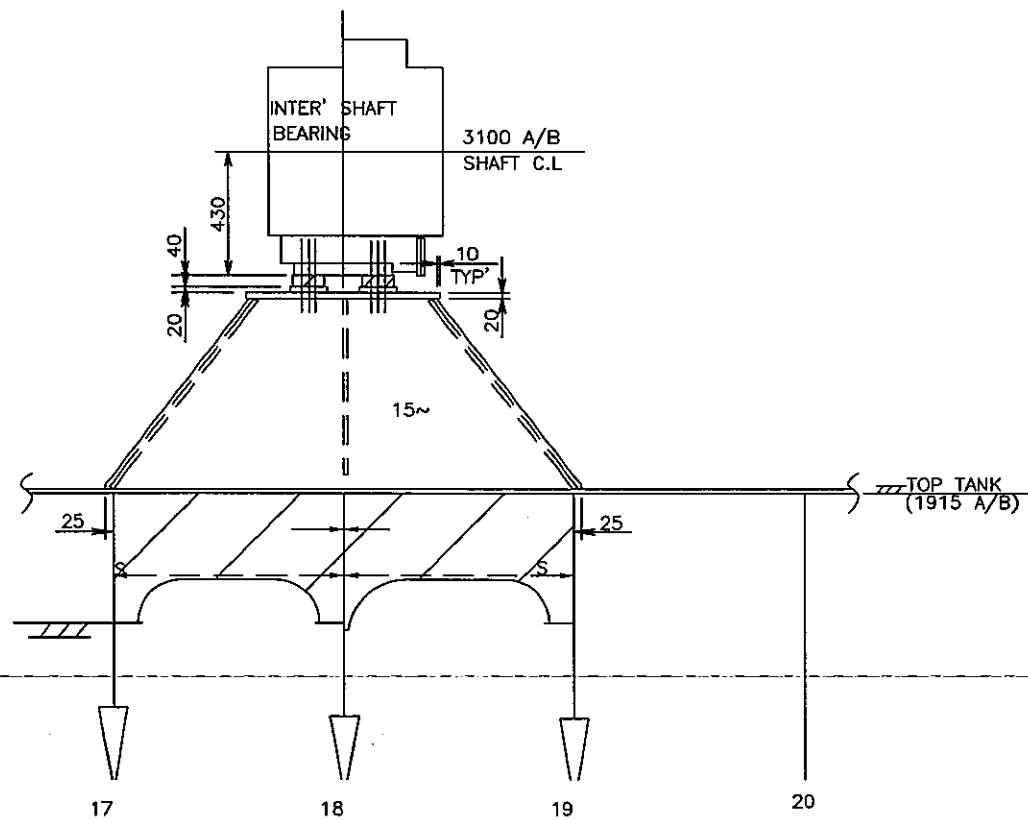
FDN.TOP PLAN

TANK TOP PL. : 14.5~



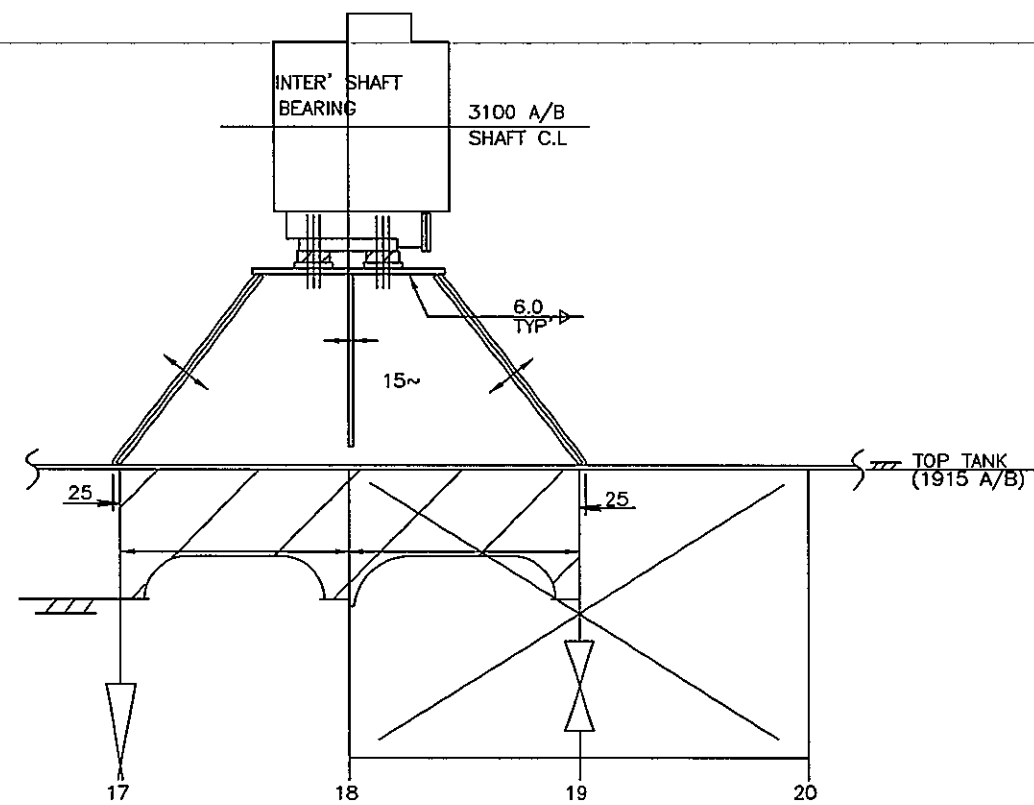
"A" ELEV.

(PORT SIDE)



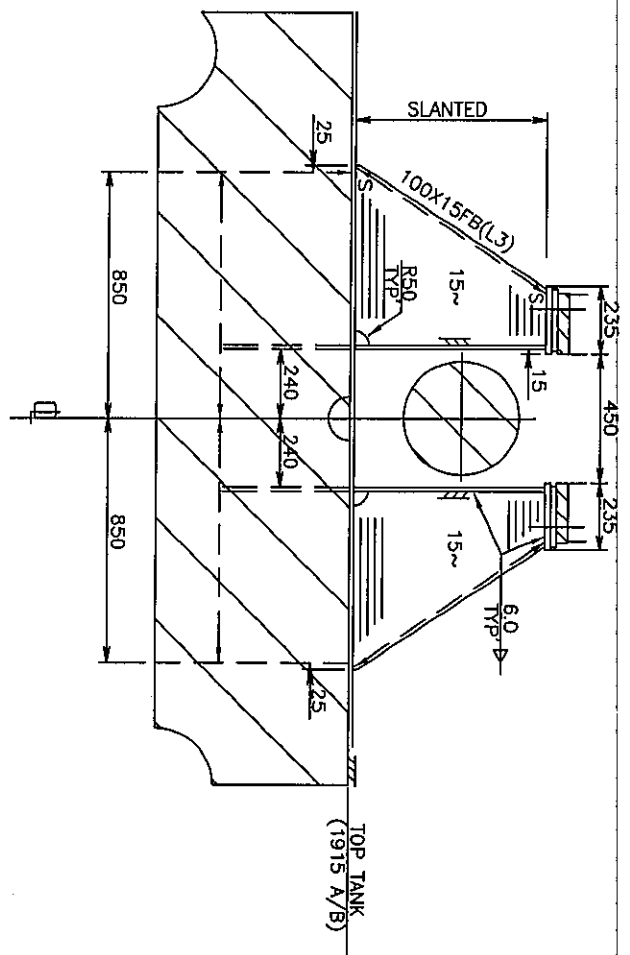
"B" ELEV.

(STB'D SIDE)

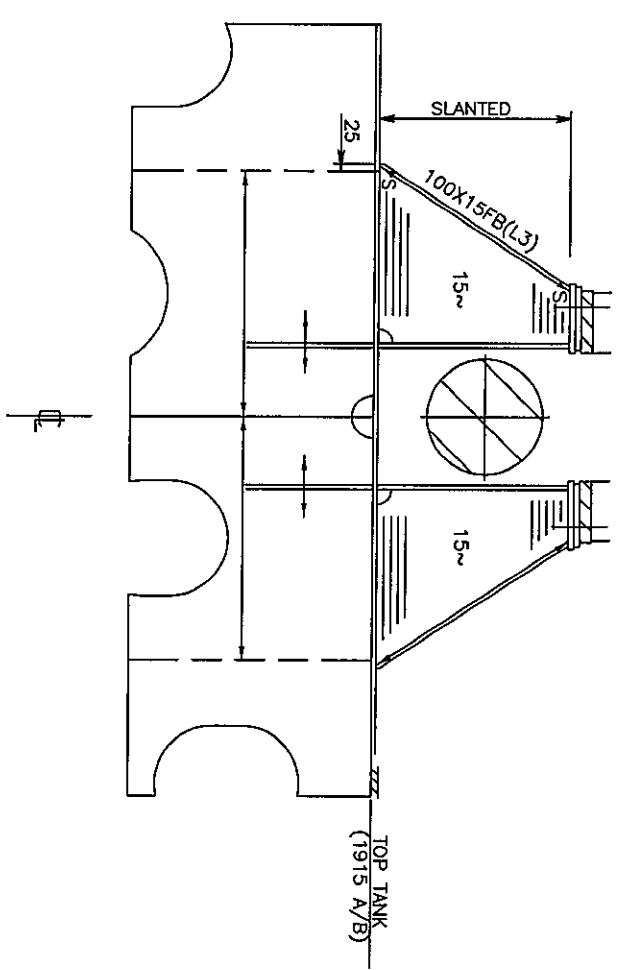


4	NUT	M42	SS400	8 EA	
3	SETTING BOLT	M42 X 220 X 115S	SS400	4 EA	
2	CHOCK LINER	210 X 110 X 40	FC200	4 EA	
1	WELD'G LINER	210 X 110 X 20	SS400	4 EA	
NO	DESCRIPTION	SIZE	MATERIAL	Q'TY	REMARK
MATERIAL LIST FOR GENERATOR SEAT LINER					

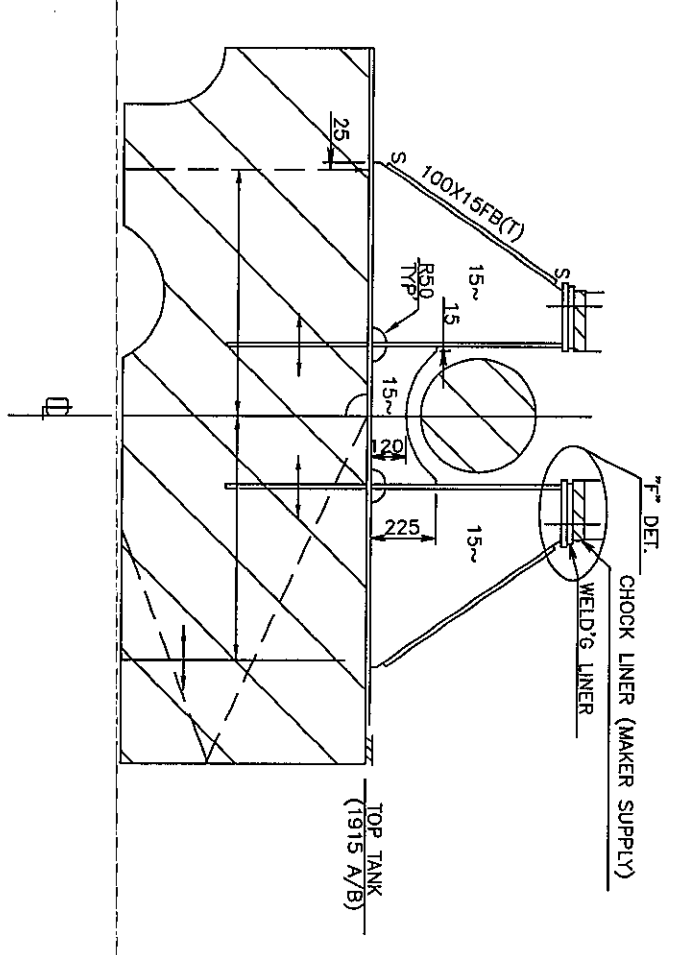
FR.17 SEC.



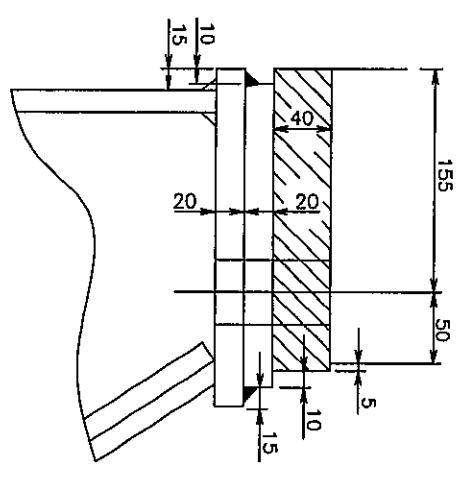
FR.19 SEC.



FR.18 SEC.



"F" DET.
(S=1/5)



DET. OF WELD LINER
(S=1/5)

