

STEERING GEAR PARTICULARS

MODEL : YDFT-80-2

STEERING GEAR TORQUE : 913 KN-m

STEERING GEAR DESIGN PRESSURE : 93 tf-m

STEERING GEAR WEIGHT : 6,000 Kgf



THIS DRAWING OR DOCUMENT IS THE PROPERTY OF THE SAMJIN SHIPBUILDING INDUSTRIES CO., LTD. AND MUST NOT BE PARTIALLY OR WHOLLY COPIED OR USED FOR ANY OTHER PURPOSE WITHOUT PRIOR WRITTEN PERMISSION OF SAMJIN SHIPBUILDING INDUSTRIES CO., LTD

图纸 分发

分发处		分发数	
汉 字	ENGLISH	FW	FC
综合设计	Integrated Design Division	1	1
船体构造设计	Hull Structure Team		
船体生产设计	Hull Production Team		
船装设计	Hull Outfitting Design		
船室设计	Accommodation Design		
机装详细设计	Machinery Detail Design	1	1
机装生产设计	Machinery Production Design		
电装设计	Electrical Design	1	1
先行舾装	Preoutfitting Division		2
E/R 舾装	E/R Outfitting		2
船室生产	Accommodation Production		
试航部	Trial Cruise Division		1
采购管理 2	Procurement Team 2		
品质经营	Quality Assurance		2
品质物流(镇海)	Logistics Team (Jinhae)		
轴舵设计(保管)	Shaft & Rudder Design	1	1
合 计 (Total)		4	11
<input type="checkbox"/>	For Working		
<input checked="" type="checkbox"/>	For Construction		
<input type="checkbox"/>	For Revision		

HULL NO.

1009~1012,
1031~1032

PROJECT

TPC KOREA

33,5K DWT LOG / BULK CARRIER

TITLE

INSTALLATION PLAN OF STEERING GEAR

APPD BY

M.Y. Park
M.Y. Park

CHKD BY

J. S. Lee
J. S. Lee

DWN BY

J. H. Park
J. H. Park
(Ext.:0226)

TEL

+86) 0631-538-0204

TOTAL 3 SHEET WITH COVER

DEPT

RUDDER & SHAFT
DESIGN TEAM

DWG NO.

DA300M711-1

SCALE

EACH

DATE

Sept. 20. 2008


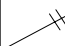
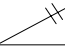
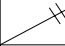
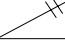
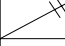
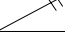
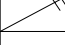
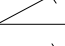
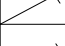
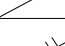
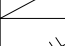
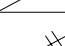



REV. NO.

1

SSI
Samjin Shipbuilding
Industries Co.,Ltd.

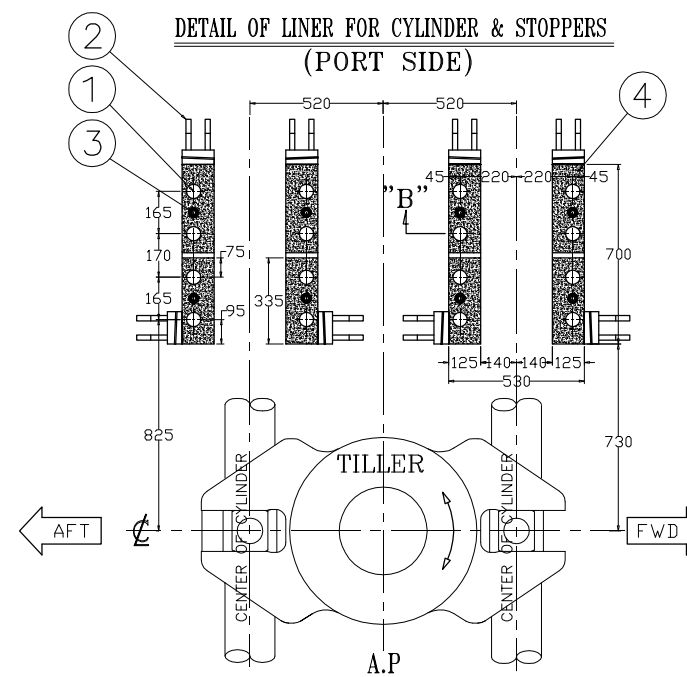
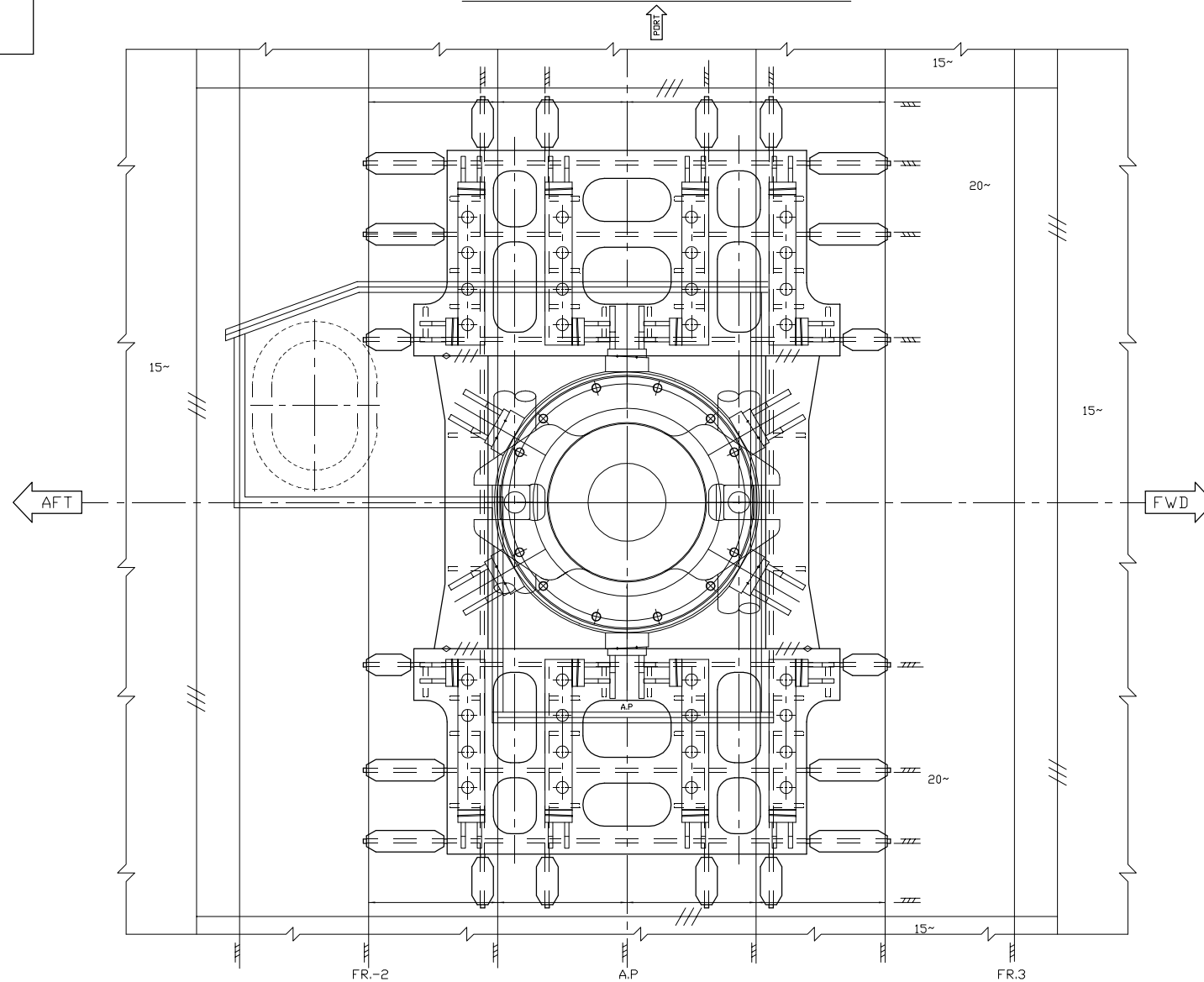
PLAN HISTORY

DWG NO	DA300M711-1
SHEET	2/3

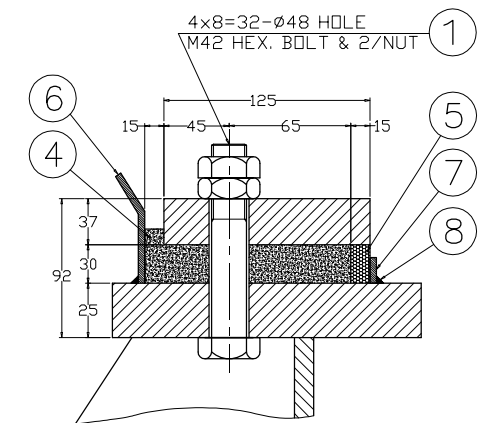
DATE	REV. NO.	DESCRIPTION	DWN	CHKD	APPD
SEP.29,2008	A	SUBMITTED TO CLASS AND OWNER FOR APPROVAL	J. H PARK		
SEP.30,2008		APPROVED BY OWNER WITHOUT COMMENT.	J. H PARK		
DEC.02,2008		APPROVED BY CLASS WITHOUT COMMENT.	J. H PARK		
DEC.23,2008	B	ADDED TO HOLE OF SEAT FOR STEERING GEAR.	J. H PARK		
DEC.29,2008	0	ISSUED FOR CONSTRUCTION.	J. H PARK		
JUNE.16,2009	1	a) ACCORDING TO MAKER SPEC, CHANGED FOR TENSION AND TORQUE OF M42 BOLT ON 3/3 PAGE.	J. H PARK		
		b) ADDED TO TUBE FOR BOLT HOLE ON 3/3 PAGE.	J. H PARK		
SEPT.19,2009		ISSUED FOR REVISION.	J. H PARK		



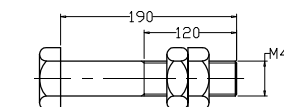
STEERING GEAR SEAT TOP PLAN



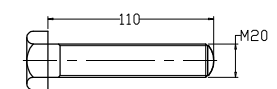
SECTION - "B"



1 STUD BOLT DETAIL



3 JACK BOLT DETAIL



1-a

NOTE
1.THE TORQUE AND TENSION OF FOUNDATION
BOLT MUST BE APPLIED AS BELOW DATA
(基座螺栓的扭矩和张力必须使用以下数值大小.)

BOLT DIA : M42
TORQUE : 125 (kgf-m)
TENSION : 10246 (kgf/cm²)

1-b

9	TUBE FOR BOLT HOLE	Ø55x2M	SPONGE	1 EA	0.5	SHIPYARD
8	SEALANT			1 SET		PHILADELPIA
7	FLAT BAR	38x3t	SS400	12 M	11	SHIPYARD
6	POURING GUIDE PLATE	75x4.5t	SS400	3 M	8	SHIPYARD
5	DAMMING MATERIAL		SPONGE	1 SET		PHILADELPIA
4	RESIN CHOCK	4.26 LITER /CAN	EPOXY RESIN	6 CAN	28	PHILADELPIA ORANGE
3	JACK BOLT	M20x110L	S45C	16 Set		YOO'WON
2	CYLINDER STOPPER		SS400	16 Set	104	YOO'WON
1	HEX. BOLT & 2/NUT	M42x190L	S45C	32 Set	80	YOO'WON
NO.	DESCRIPTION	SIZE	MAT'L	Q'TY	(Kg) WEIGHT	REMARK

HULL NO.	H1009~1012 H1031~1032	INSTALLATION PLAN OF STEERING GEAR
DWG. NO.	DA300M711-1	
SCALE	1/30	

