

GENERAL NOTE

1. STUD BOLT & TAPER PIN HOLE INSTALLATION WILL BE DONE AFTER SHAFT ALIGNMENT FINISHED.
2. THE TORQUE AND TENSION OF FOUNDATION BOLT MUST BE APPLIED AS BELOW DATA

BOLT DIA : M42
 TORQUE : 105~160(kg-m)
 TENSION : 13534~21654kg

SURFACE ROUGHNESS
 ISO 1302 (Rd)

MICRON	OLD	NEW
50	▽	N12 /
25		N11 /
12.5		N10 /
6.3	▽▽	N9 /
3.2		N8 /
1.6		N7 /
0.8	▽▽▽	N6 /
0.4		N5 /
0.2		N4 /
0.1	▽▽▽▽	N3 /
0.05		N2 /
0.025		N1 /

**图纸 分发**

分发处		分发数	
汉字	ENGLISH	FW	FC
综合设计	Integrated Design Division	1	1
船体设计 1	Hull Design 1 Division		
船体设计 2	Hull Design 2 Division	3	3
船装设计	Hull Outfitting Design		
船室设计	Accommodation Design		
机装详细设计	Machinery Detail Design	2	2
机装生产设计	Machinery Production Design	3	3
电装设计	Electrical Design	1	1
先行舾装	Preoutfitting Division		2
E/R 舾装	E/R Outfitting		2
船室生产	Accommodation Production		
试航部	Trial Cruise Division		2
品质经营	Quality Assurance		2
品质物流(镇海)	Logistics Team (Jinhae)		1
轴舵设计(保管)	Shaft & Rudder Design	1	1
合计 (Total)		11	20
<input type="checkbox"/>	For Working		
<input checked="" type="checkbox"/>	For Construction		
<input type="checkbox"/>	For Revision		

THIS DRAWING OR DOCUMENT IS THE PROPERTY OF THE SAMJIN SHIPBUILDING INDUSTRIES CO., LTD. AND MUST NOT BE PARTIALLY OR WHOLLY COPIED OR USED FOR ANY OTHER PURPOSE WITHOUT PRIOR WRITTEN PERMISSION OF SAMJIN SHIPBUILDING INDUSTRIES CO., LTD

HULL NO. 1009~1012, 1031~1032		PROJECT TPC KOREA 33,5K DWT LOG / BULK CARRIER	
APPD BY M.Y. PARK		TITLE INSTALLATION DWG. OF INTERMEDIATE SHAFT BEARING	
CHKD BY J.S. LEE			
DWN BY J.H. PARK (0226)		TEL +86)0631-538-1888	TOTAL 4 SHEET(S) WITH COVER
 Samjin Shipbuilding Industries Co., Ltd.		DEPT RUDDER & SHAFT DESIGN TEAM	DWG NO. DA300M712
			SCALE EACH
		DATE Sept. 20, 2008	REV. NO. 0



Samjin Shipbuilding
Industries Co.,Ltd.

PLAN HISTORY

DWG NO

DA300M712

SHEET

2/4

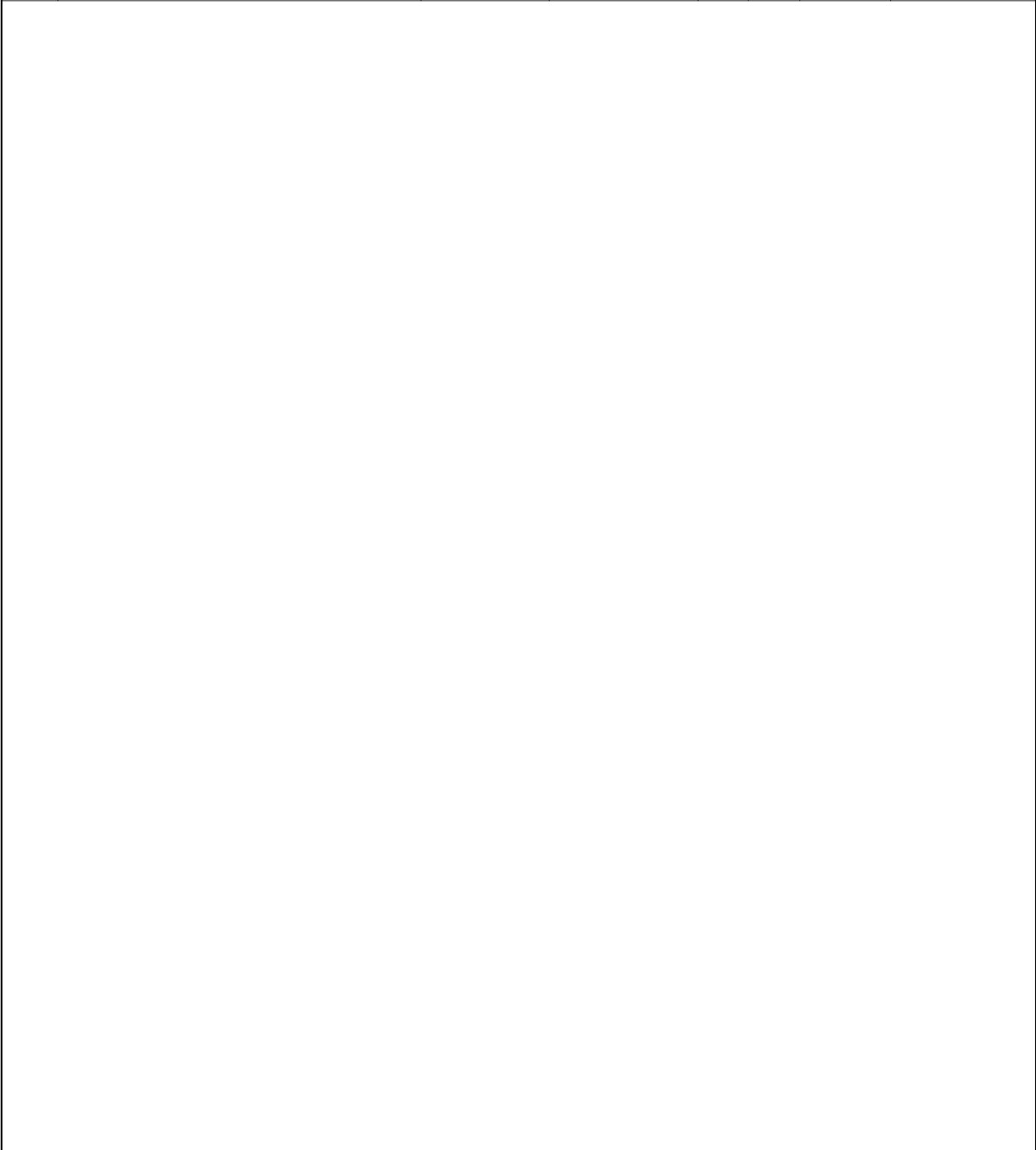
DATE	REV. NO.	DESCRIPTION	DWN	CHKD	APPD
Oct. 07,2008	A	SUBMITTED TO CLASS AND OWNER FOR APPROVAL	J.H PARK		
Oct. 21,2008		APPROVED BY OWNER WITHOUT COMMENT.	J.H PARK		
Oct. 27,2008		ISSUED FOR WORKING.	J.H PARK		
NOV. 06,2008		APPROVED BY CLASS WITHOUT COMMENT.	J.H PARK		
NOV. 07,2008		ISSUED FOR CONSTRUCTION.	J.H PARK		



INSTALLATION DWG. OF
INTERMEDIATE SHAFT BEARING

DWG NO	DA300M712
SHEET	3/4

NO	DESCRIPTION	MATERIAL	SIZE	Q'TY	UNIT	WEIGHT (kg)	REMARK
1	HEX. BOLT & 2/NUT	SS400	M42x220L	4	SET	16	SUPPLY BY JMT
2	JACK BOLT	S45C	M24x130L	4	EA	4	SUPPLY BY JMT
3	TAPER PIN(DIN EN 28736)	S35C	ø14x160L	2	EA	1	SUPPLY BY JMT
4	WELDING LINER(AFT)	SS400	20t	4	EA	14	SUPPLY BY YARD
5	CHOCK LINER(AFT)	FC200	55t	4	EA	28	SUPPLY BY JMT





Samjin Shipbuilding
Industries Co.,Ltd.

PAGE

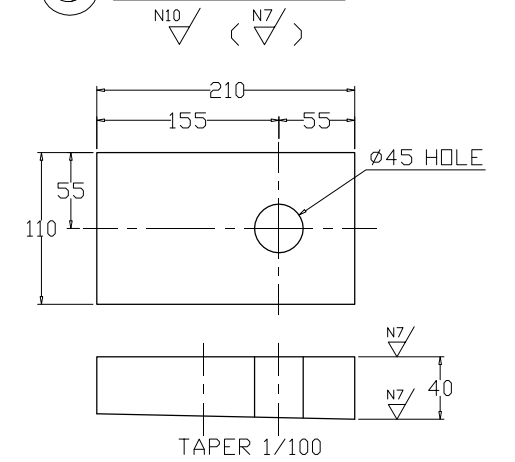
4 / 4

PLAN VIEW

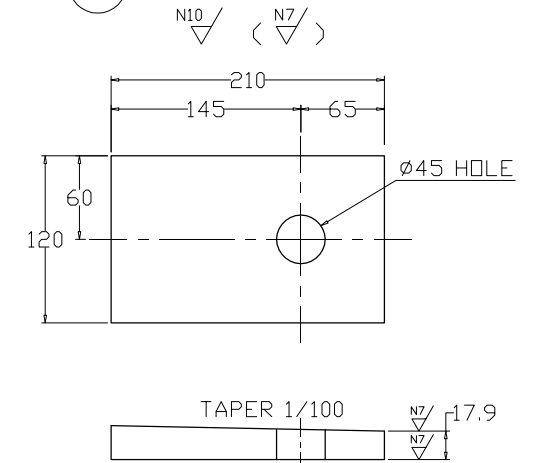
SECTION-"B"

SECTION-"A"

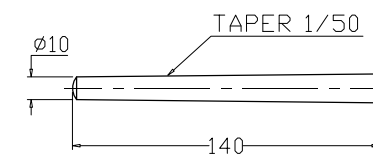
⑤ CHOCK LINER



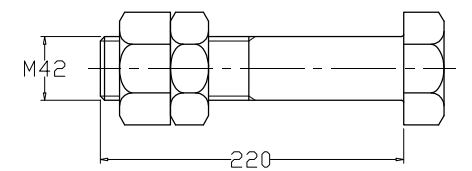
④ WELDING LINER



③ TAPER PIN

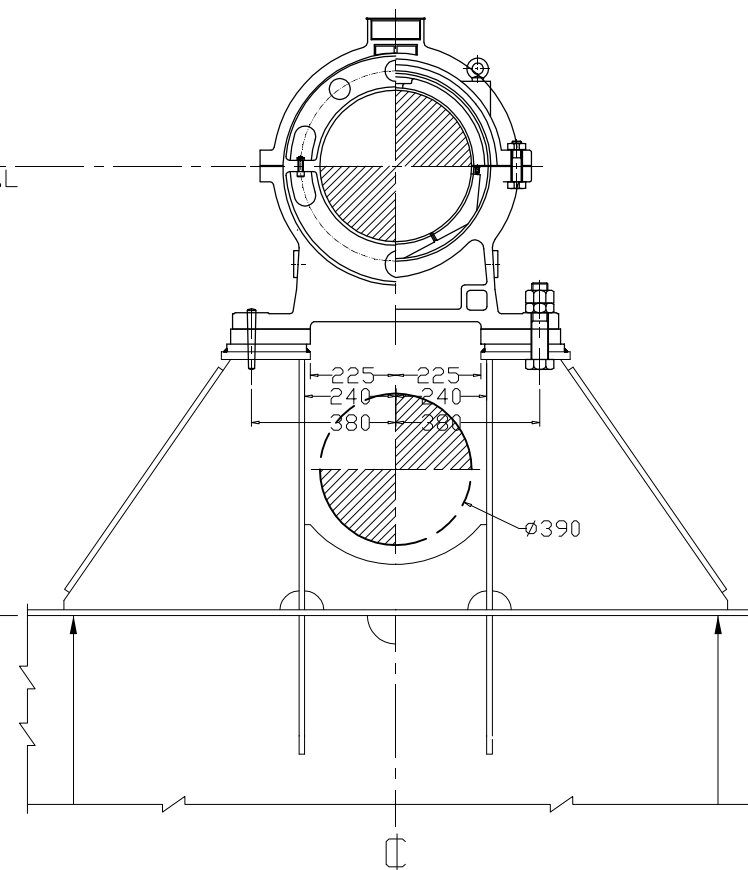
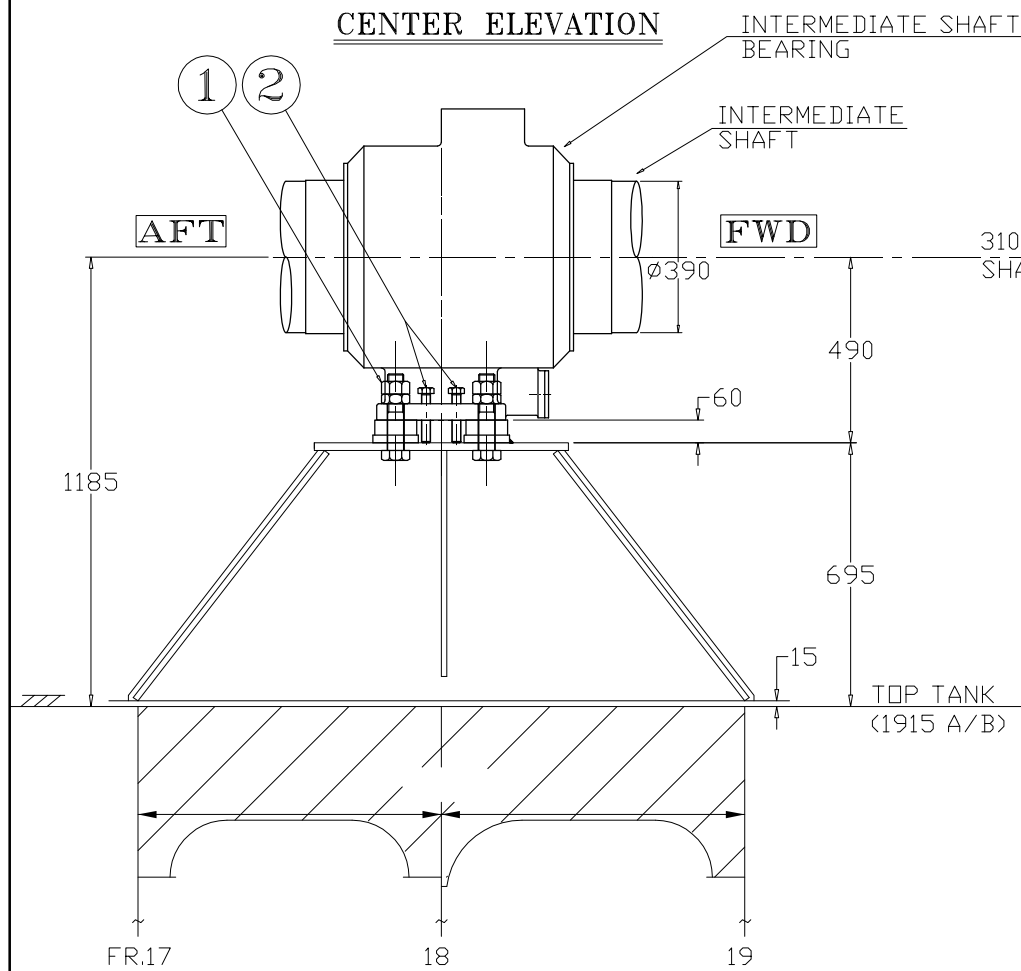
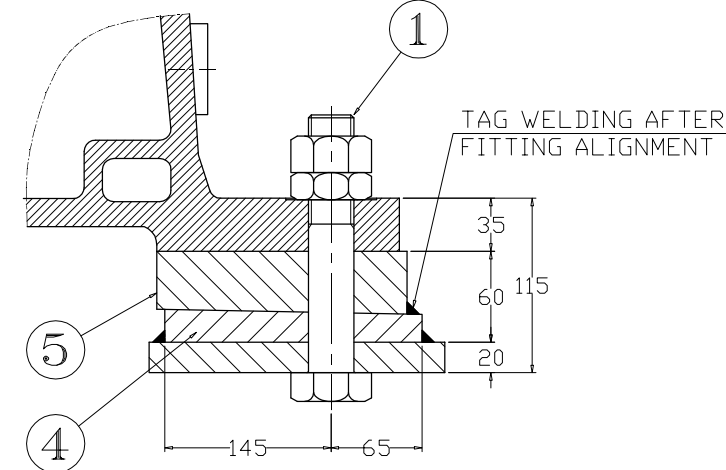
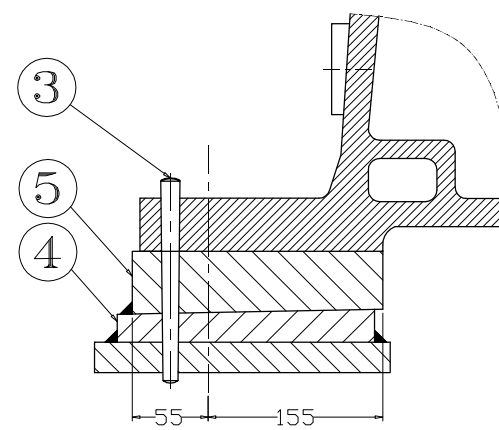
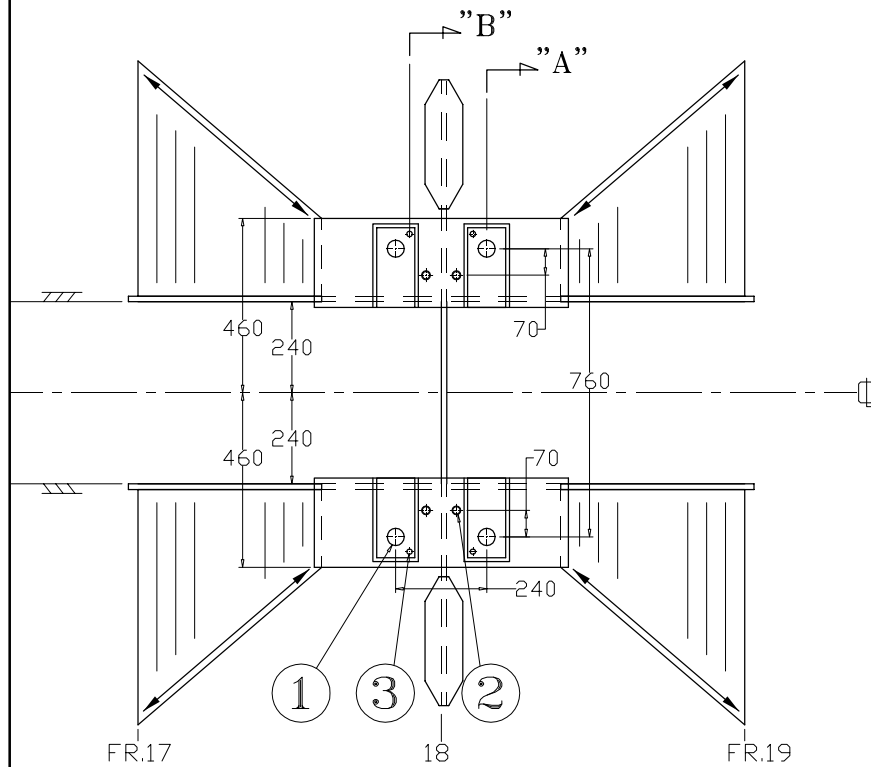


① STUD BOLT & NUT



CENTER ELEVATION

FR.18 SECTION



HULL NO.	1009~1012, 1031~1032	INSTALLATION DRAWING OF INTERMEDIATE SHAFT BEARING
DWG. NO.	DA300M712	
SCALE	1/20	