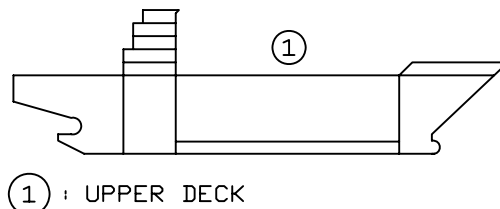
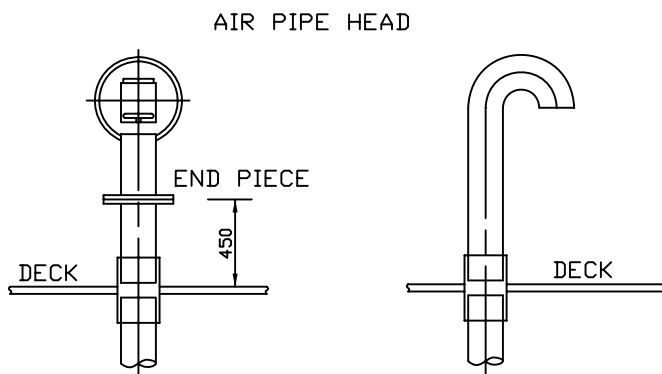


	STANDARD NAME: HULL TANK CONNECTION	STANDARD NO.:	104/137
		ENACTMENT DATE	PAGE
		REVISION DATE	<1/11>

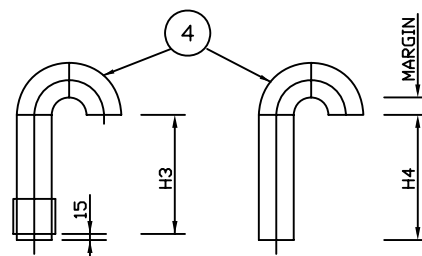
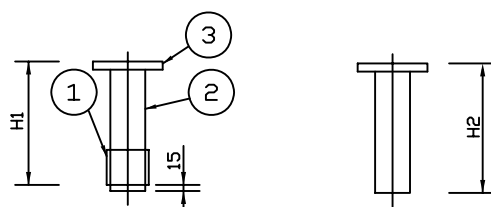
13.1 METHOD AIR VENT PIPE TERMINAL

13.1.1 INSTALLATION LOCATION



① DECK : H	② DECK : H
MIN. 760	MIN. 450

13.1.2 AIR VENT PIPE END PIECE



①	SLEEVE	
②	STEEL PIPE	
③	STEEL FLANGE	
④	STEEL ELBOW<SHORT>	

13.1.3 AIR VENT PIPE END PIECE DESIGN DIMENSION

UNIT: mm

PIPE N.D	PIPE WALL THICKNESS	H1	H2	H3	H4
50A	SCH 120	465 / 165	450 / 150	775 / 465	760 / 450
65A	SCH 80	465 / 165	450 / 150	775 / 465	760 / 450
80A	SCH 80	465 / 165	450 / 150	775 / 465	760 / 450
100A	SCH 80	465 / 165	450 / 150	775 / 465	760 / 450
125A	SCH 80	465 / 165	450 / 150	775 / 465	760 / 450
150A	SCH 80	465 / 200	450 / 180	775 / 465	760 / 450
200A	SCH 80	407 / 200	392 / 180	775 / 465	760 / 450
250A	SCH 40	358 / 200	343 / 180	775 / 465	760 / 450
300A	SCH 40	323 / 200	308 / 180	775 / 465	760 / 450
350A	SCH 40	245 / 200	230 / 180	775 / 465	760 / 450

NOTE

1) H1, H2 - MARGIN INCLUD.

2) ① DECK ② DECK

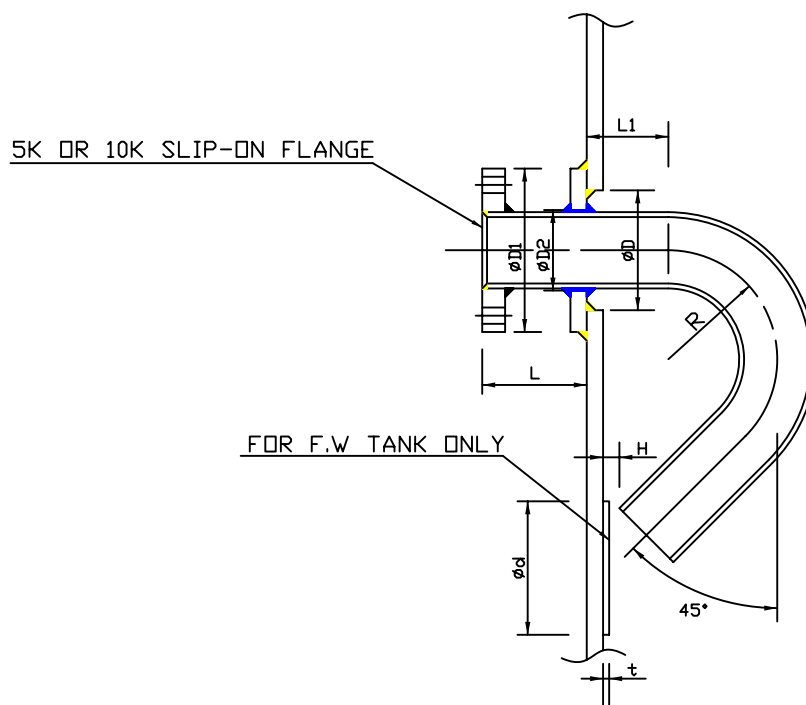
① : UPPER DECK

② : POOP DK

	STANDARD NAME:	STANDARD NO.:	106/137
	HULL TANK CONNECTION	ENACTMENT DATE	PAGE
		REVISION DATE	△ <3/11>

13.2.3 DETAIL OF INLET PIPE

A) "I-A" TYPE (FOR HULL TANK)

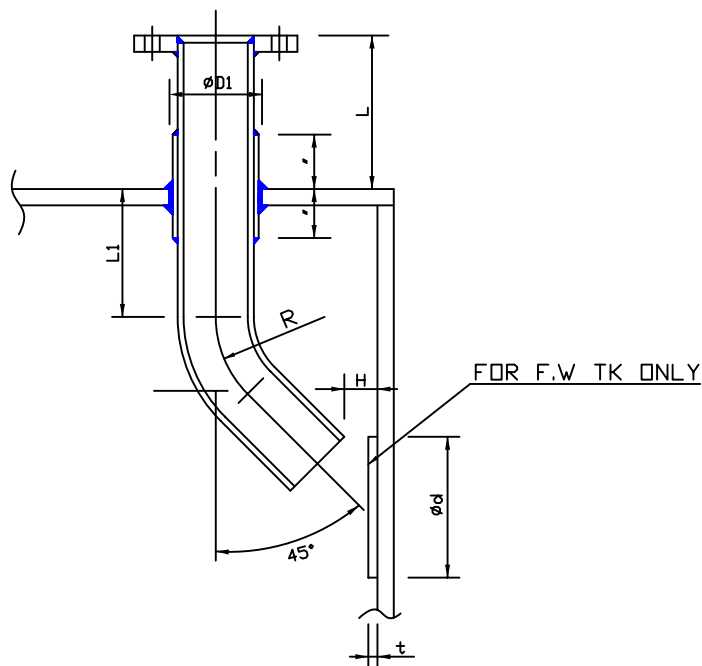


UNIT : mm

PIPE		D	D1	D2	d	R	L	L1	H	REMARK	
N.D	□.D										
15A	21.7	55	115	23	95	95	100	100	30±10		
25A	34.0	75	135	36	125	85					
32A	42.7	75	135	45	135	106					
40A	48.6	90	150	50	140	120					
50A	60.5	105	165	62	155	150					
65A	76.3	120	180	78	175	190					
80A	89.4	130	190	91	185	225	120	150	30±10		
100A	114.3	155	215	116	210	285			ELBOW		50±10
125A	139.8	185	265	142	250						
150A	165.2	215	295	168	280						
200A	216.3	265	345	219	330						
250A	267.4	320	400	270	400						
300A	318.5	375	455	322	445		150	50±10			
350A	355.6	413	493	359	490						

	STANDARD NAME: HULL TANK CONNECTION	STANDARD NO.:	107/137
		ENACTMENT DATE	PAGE
		REVISION DATE	△ <4/11>

B) "I-B" TYPE (FOR HULL TANK)



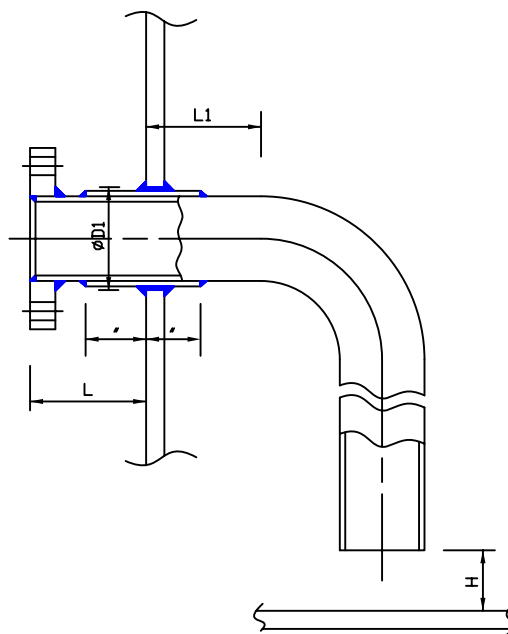
UNIT : mm

PIPE		D1	d	PIPE			H	FLANGE		REMARK
N.D	□.D			L	L1	R		5K	10K	
15A	21.7	36	95	150	100	95	30±10	5K SLIP-ON FLANGE	10K SLIP-ON FLANGE	
25A	34.0	50	125			85				
32A	42.7	59	135			106				
40A	48.6	65	140			120	30±10			
50A	60.5	80	155			150				
65A	76.3	99	175			190	30±10			
80A	89.4	113	185			225				
100A	114.3	140	210		150	285	50±10			
125A	139.8	170	250			ELBOW				
150A	165.2	195	280							
200A	216.3	249	330				50±10			
250A	267.4	300	400	200			50±10			
300A	318.5	352	445							
350A	355.6	389	490			50±10				

\	STANDARD NAME:	STANDARD NO.:	108/137
	HULL TANK CONNECTION	ENACTMENT DATE	PAGE
		REVISION DATE	△ <5/11>

13.2.4 DETAIL OF OUTLET PIPE

A) "B-A" TYPE (FOR HULL TANK)

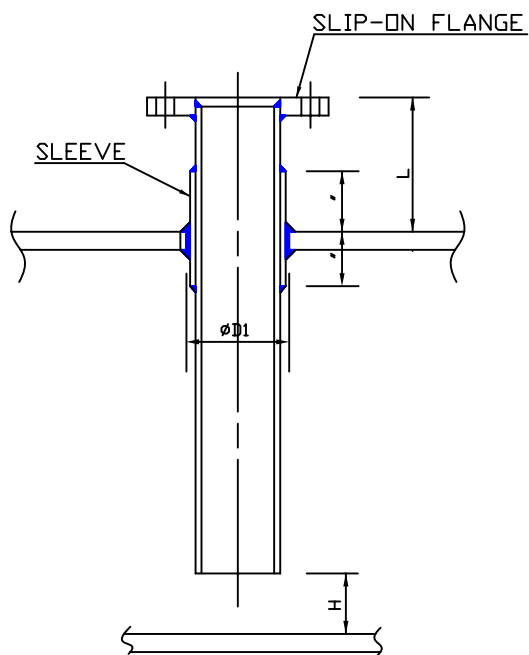


UNIT : mm

PIPE		D1	L	L1	H	SEAT		DRAIN PIPE (H)	REMARK										
N.D	□.D					5K	10K												
25A	34.0	50	100	100	40±10	5K SLIP-ON FLANGE	10K SLIP-ON FLANGE	20											
32A	42.7	58																	
40A	48.6	65																	
50A	60.5	80																	
65A	76.3	99																	
80A	89.4	113	120		50±10														
100A	114.3	140																	
125A	139.8	170			60±10														
150A	165.2	195	150	150															
200A	216.3	249																	
250A	267.4	300																	
300A	318.5	352																	
350A	355.6	389																	

	STANDARD NAME: HULL TANK CONNECTION	STANDARD NO.:	109/137
		ENACTMENT DATE	PAGE
		REVISION DATE	△ <6/11>

B) "□-B" TYPE (FOR HULL TANK)



UNIT : mm

PIPE		D1	L	H	FLANGE		REMARK
N.D	□.D				5K	10K	
25A	34.0	50	150	40±10	5K SLIP-ON FLANGE	10K SLIP-ON FLANGE	
32A	42.7	58					
40A	48.6	65					
50A	60.5	80					
65A	76.3	99					
80A	89.4	113					
100A	114.3	140					
125A	139.8	170					
150A	165.2	195					
200A	216.3	249	200	90±10			
250A	267.4	300					
300A	318.5	352					
350A	355.6	389					