



OFFSHORE STANDARD
DNV-OS-C105

STRUCTURAL DESIGN OF TLPS
(LRFD METHOD)

OCTOBER 2005

*Since issued in print (October 2005), this booklet has been amended, latest in April 2007.
See the reference to "Amendments and Corrections" on the next page.*

DET NORSKE VERITAS

FOREWORD

DET NORSKE VERITAS (DNV) is an autonomous and independent foundation with the objectives of safeguarding life, property and the environment, at sea and onshore. DNV undertakes classification, certification, and other verification and consultancy services relating to quality of ships, offshore units and installations, and onshore industries worldwide, and carries out research in relation to these functions.

DNV Offshore Codes consist of a three level hierarchy of documents:

- *Offshore Service Specifications*. Provide principles and procedures of DNV classification, certification, verification and consultancy services.
- *Offshore Standards*. Provide technical provisions and acceptance criteria for general use by the offshore industry as well as the technical basis for DNV offshore services.
- *Recommended Practices*. Provide proven technology and sound engineering practice as well as guidance for the higher level Offshore Service Specifications and Offshore Standards.

DNV Offshore Codes are offered within the following areas:

- A) Qualification, Quality and Safety Methodology
- B) Materials Technology
- C) Structures
- D) Systems
- E) Special Facilities
- F) Pipelines and Risers
- G) Asset Operation
- H) Marine Operations
- J) Wind Turbines

Amendments and Corrections

This document is valid until superseded by a new revision. Minor amendments and corrections will be published in a separate document normally updated twice per year (April and October).

For a complete listing of the changes, see the "Amendments and Corrections" document located at: <http://webshop.dnv.com/global/>, under category "Offshore Codes".

The electronic web-versions of the DNV Offshore Codes will be regularly updated to include these amendments and corrections.

Comments may be sent by e-mail to rules@dnv.com

For subscription orders or information about subscription terms, please use distribution@dnv.com

Comprehensive information about DNV services, research and publications can be found at <http://www.dnv.com>, or can be obtained from DNV, Veritasveien 1, NO-1322 Høvik, Norway; Tel +47 67 57 99 00, Fax +47 67 57 99 11.

© Det Norske Veritas. All rights reserved. No part of this publication may be reproduced or transmitted in any form or by any means, including photocopying and recording, without the prior written consent of Det Norske Veritas.

Computer Typesetting (FM+SGML) by Det Norske Veritas.
Printed in Norway.

If any person suffers loss or damage which is proved to have been caused by any negligent act or omission of Det Norske Veritas, then Det Norske Veritas shall pay compensation to such person for his proved direct loss or damage. However, the compensation shall not exceed an amount equal to ten times the fee charged for the service in question, provided that the maximum compensation shall never exceed USD 2 million.
In this provision "Det Norske Veritas" shall mean the Foundation Det Norske Veritas as well as all its subsidiaries, directors, officers, employees, agents and any other acting on behalf of Det Norske Veritas.

Main Changes

- **General**

Project experience has revealed that areas in the previous version of the standard needed further development, e.g. addressing or making references to aspects as relevant to TLPs, e.g. such as stability and compartmentation, and not as in previous version to MOU generally.

- **Main changes**

- *Tendon Fracture Mechanics:* The previous version of the standard required sudden tendon rupture to be evaluated in design, without any specific guidance on how to perform such evaluation.

The TLP design practice (in US industry) is to prevent potential tendon rupture through material specification, fracture mechanics, weld control, and high safety factors, with a view to incorporate a planned tendon removal case, not an accidental rupture scenario. DNV with this updated version is addressing those prevalent practices as well as corresponding redundancy and fracture control requirements, adding specific guidance on design fatigue factors, fracture control requirements, and corresponding inspection requirement (Sec.7), i.e. the philosophy being that a

TLP shall be designed with sufficient safety margin to prevent a tendon rupture.

- *Composite Tendons:* The new version of the standard is adding guidance on the application of composite tendons, and provide links to other DNV standards. The previous version did not provide any guidance with regards to such applications.
- *Stability Requirement:* This version of the standard deletes inappropriate references to non-relevant semi-submersible stability requirements, and in stead addresses stability requirements of TLP under "on-site" conditions by means of weight and COG control.
It further adds stability requirements for both ULS (Sec.6) and ALS conditions (Sec.8). In the latter section is also added compartmentation requirements specific to TLPs.
- *CMC Requirements:* The updated standard contains a new section (Sec.9) addressing certification requirements for load bearing components as well as associated systems (i.e. load monitoring systems) of the tendon system.
- *Misc.:* The entire document was thoroughly reviewed, errors corrected and definitions and statements made more clear, where the previous version suffered from inaccuracies or ambiguities. The revision also presented an opportunity to update the text and illustrations of the document.

CONTENTS

Sec. 1 Introduction	7	D. Model Testing	17
A. General.....	7	D 100 General.....	17
A 100 Introduction.....	7	E. Load Effects in the Tendons.....	18
A 200 Objectives	7	E 100 General.....	18
A 300 Scope and application	7	Sec. 6 Ultimate Limit States (ULS).....	19
A 400 Classification	7	A. Introduction.....	19
B. Normative References	8	A 100 General.....	19
B 100 General.....	8	A 200 Stability.....	19
C. Definitions	8	B. Hull	19
C 100 Verbal forms	8	B 100 General.....	19
C 200 Terms	8	B 200 Structural analysis.....	20
D. Abbreviations and Symbols.....	9	B 300 Structural design	20
D 100 Abbreviations.....	9	C. Deck.....	20
D 200 Symbols	9	C 100 General.....	20
E. Description of the Tendon System	9	C 200 Air gap	20
E 100 General.....	9	D. Tendons.....	20
Sec. 2 Structural Categorisation, Material Selection and Inspection Principles.....	11	D 100 Extreme tendon tensions.....	20
A. Introduction	11	D 200 Structural design of tendons	21
A 100 General.....	11	E. Foundations.....	21
B. Structural Categorisation.....	11	E 100 General.....	21
B 100 General.....	11	F. Scantlings and Weld Connections	21
C. Material Selection.....	12	F 100 General.....	21
C 100 General.....	12	Sec. 7 Fatigue Limit States (FLS)	22
C 200 Design temperatures	12	A. Introduction.....	22
D. Fabrication Inspection Categories	12	A 100 General.....	22
D 100 General.....	12	B. Hull	22
Sec. 3 Design Principles.....	13	B 100 General.....	22
A. Introduction	13	C. Deck.....	22
A 100 General.....	13	C 100 General.....	22
B. Design Conditions	13	D. Tendons.....	22
B 100 General.....	13	D 100 General.....	22
B 200 Fabrication	13	E. Foundation	23
B 300 Hull and deck mating.....	13	E 100 General.....	23
B 400 Sea transportation	13	Sec. 8 Accidental Limit States (ALS).....	24
B 500 Installation	13	A. General.....	24
B 600 Decommissioning	14	A 100 General.....	24
C. Design Principles, Tendons	14	A 200 Stability.....	24
C 100 General.....	14	B. Hull and Deck	24
Sec. 4 Design Loads	15	B 100 General.....	24
A. General.....	15	C. Tendons.....	24
A 100 General.....	15	C 100 General.....	24
B. Load Categories.....	15	D. Foundations.....	24
B 100 General.....	15	D 100 General.....	24
Sec. 5 Global Performance.....	16	App. A Certification of Tendon System.....	25
A. Introduction	16	A. General.....	25
A 100 General.....	16	A 100 Introduction.....	25
B. Frequency Domain Analysis	16	B. Equipment categorization	25
B 100 General.....	16	B 100 Requirements to approval procedure.....	25
B 200 High frequency analyses.....	16	C. Fabrication Record.....	25
B 300 Wave frequency analyses.....	16	C 100 General.....	25
B 400 Low frequency analyses.....	17	D. Documentation Deliverables for Certification of Equipment.....	26
C. Time Domain Analyses	17	D 100 General.....	26
C 100 General.....	17		

E. Tendon Systems and Components.....	26	E 900 Tendon porch	28
E 100 General	26	E 1000 Tendon corrosion protection system	28
E 200 Tendon pipe.....	26	E 1100 Load management program (LMP).....	28
E 300 Bottom tendon interface (BTI).....	27		
E 400 Flex bearings	27	F. Categorisation of Tendon Components	29
E 500 Foundations	27		
E 600 Top tendon interface (TTI)	27	G. Tendon Fabrication.....	29
E 700 Intermediate tendon connectors (ITC)	28	G 100 General	29
E 800 Tendon tension monitoring system (TTMS).....	28		

SECTION 1 INTRODUCTION

A. General

A 100 Introduction

101 This standard provides requirements and guidance to the structural design of TLPs. The requirements and guidance documented in this standard are generally applicable to all configurations of tension leg platforms.

102 This standard is based on the load and resistance factor design method (LRFD). LRFD is defined in DNV-OS-C101.

103 A TLP can alternatively be designed according to working stress design principles, which is defined in DNV-OS-C201.

104 A *Tension Leg Platform (TLP)* is defined as a buoyant unit connected to a fixed foundation (or piles) by pre-tensioned tendons. The tendons are normally parallel, near vertical elements, acting in tension, which usually restrain the motions of the TLP in heave, roll and pitch. The platform is usually compliant in surge, sway and yaw. Figure 1 shows an example of a tension leg platform.

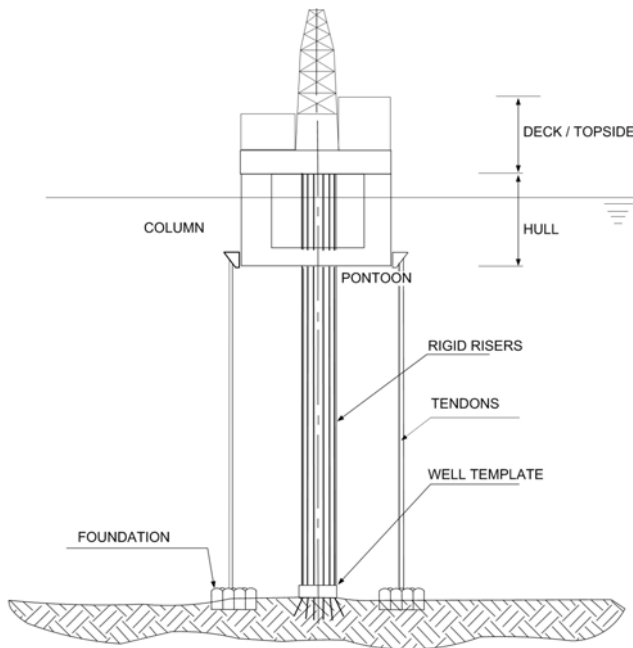


Figure 1
Example of a tension leg platform

105 The standard has been written for general world-wide application. Governmental regulations may include requirements in excess of the provisions of this standard depending on size, type, location and intended service of the offshore unit/installation.

A 200 Objectives

201 The objectives of the standard are to:

- provide an internationally acceptable standard of safety by defining minimum requirements for structural design of TLPs
- serve as a contractual reference document for suppliers and purchasers
- serve as guidance for designers, suppliers, purchasers and regulators
- specify procedures and requirements for TLP units subject

to DNV verification classification and certification services.

A 300 Scope and application

301 A TLP is usually applied for drilling, production and export of hydrocarbons. Storage may also be a TLP function.

302 A TLP may be designed to function in different modes, typically operation and survival. Also horizontal movement (e.g. by use of catenary or taut mooring) of TLP above wells may be relevant. Limiting design criteria when going from one mode of operation to another shall be established.

303 The TLP unit should also be designed for transit relocation, if relevant.

304 For novel designs, or unproved applications of designs where limited, or no direct experience exists, relevant analyses and model testing shall be performed which clearly demonstrate that an acceptable level of safety can be obtained, i.e. safety level is not inferior to that obtained when applying this standard to traditional designs.

305 Requirements concerning riser systems are given in DNV-OS-F201.

306 In case of application of a catenary or taut mooring system in combination with tendons, reference is made to DNV-OS-E301.

307 Requirements related to stability (intact and damaged) are given in Sec.6 for ULS condition and Sec.8 for ALS condition.

A 400 Classification

401 Classification principles, procedures and applicable class notations related to classification services of offshore units are specified in the DNV Offshore Service Specifications given in Table A1.

Table A1 DNV Offshore Service Specifications	
Reference	Title
DNV-OSS-101	Rules for Classification of Offshore Drilling and Support Units
DNV-OSS-102	Rules for Classification of Floating Production, Storage and Loading Units
DNV-OSS-103	Rules for Classification of LNG/LPG Floating Production and Storage Units or Installations
	Rules for Planning and Execution of Marine Operations

402 It shall be agreed with DNV, at the start of the project, what documents from the project Master Document Register (MDR) shall be the subject of approval.

Documentation for classification shall be in accordance with the NPS DocReq (DNV Nauticus Production System for documentation requirements) and Guideline No.17.

403 It is possible to limit the classification to a selected scope (e.g. HULL, TOPSIDE, DRILLING MODULE, ACCOMMODATION etc.). Details of the scope for classification shall be discussed and agreed with DNV at the start of the project.

404 Some of the design phases (e.g. hull and deck mating, transportation, installation and decommissioning) presented in the standard are not covered by normal classification scope, Technical requirements given in DNV-OS-C101 Sec.8, related to Serviceability Limit States, are not mandatory as part of classification.

B. Normative References

B 100 General

101 DNV documents in Table B1 and recognized codes and standards in Table B2 are referred to in this standard.

102 Other recognised standards may be applied provided it can be demonstrated that they meet or exceed the level of safety of actual DNV Offshore Standards.

Table B1 DNV Reference documents

Reference	Title
DNV-OS-A101	Safety Principles and Arrangement
DNV-OS-B101	Metallic Materials
DNV-OS-C101	Design of Offshore Steel Structures, General (LRFD method)
DNV-OS-C103	Structural Design of Column Stabilised Units (LRFD method)
DNV-OS-C106	Structural Design of Deep Draught Floating Units
DNV-OS-C201	Structural Design of Offshore Units (WSD method)
DNV-OS-C301	Stability and Watertight Integrity
DNV-OS-C401	Fabrication and Testing of Offshore Structures
DNV-OS-C501	Composite Components
DNV-OS-C502	Offshore Concrete Structures
DNV-OS-D202	Instrumentation and Telecommunication Systems
DNV-OS-E401	Helicopter Decks
DNV-OS-E301	Position Mooring
DNV-OS-F201	Dynamic Risers

Table B2 Recognised codes and standards

Reference	Title
API RP 2A	Recommended Practice for Planning, Designing and Constructing Fixed Offshore Platforms - Working Stress Design
API RP 2T	Planning, Designing and Constructing Tension Leg Platforms
API RP 2R	Recommended Practice for Design, Rating and Testing of Marine Drilling Riser Couplings
API RP 2RD	Design of Marine Risers for Floating Production System and TLPs
N-004	NORSOK - Design of Steel Structures
API SPEC 2H	Specification for Carbon Manganese Steel Plate for Offshore Platform Tubular Joints
API RP 2L	Recommended Practice for Planning, Designing and Constructing Heliports for Fixed Offshore Platforms
BS 7910	Guide on Methods for Assessing the Acceptability of Flaws in Fusion Welded Structures
BS 7448	Fracture Mechanics Toughness Tests

C. Definitions

C 100 Verbal forms

101 *Shall*: Indicates a mandatory requirement to be followed for fulfilment or compliance with the present standard. Devia-

tions are not permitted unless formally and rigorously justified, and accepted by all relevant contracting parties.

102 *Should*: Indicates a recommendation that a certain course of action is preferred or particularly suitable. Alternative courses of action are allowable under the standard where agreed between contracting parties but shall be justified and documented.

103 *May*: Indicates a permission, or an option, which is permitted as part of conformance with the standard.

C 200 Terms

201 *Heave restrained platform (HRP)*: A platform which is free to roll and pitch, but restrained in the heave eigenmode.

202 *High frequency (HF) responses*: Defined as TLP rigid body motions at, or near heave, roll and pitch eigenperiods due to non-linear wave effects.

203 *Low frequency (LF) responses*: Defined as TLP rigid body non-linear motions at, or near surge, sway and yaw eigenperiods.

204 *Mini TLP*: Small tension leg platform with one, or multiple columns.

205 *Ringings*: Defined as the non-linear high frequency resonant response induced by transient loads from high, steep waves.

206 *Roll, pitch, and yaw*: Rotational modes around surge, sway and heave axis, respectively.

207 *Springing*: Defined as the high frequency non-linear resonant response induced by cyclic (steady state) loads in low to moderate seastates.

208 *Surge, sway, heave*: Translatory displacements of TLP in horizontal planes (surge, sway) and vertical plane (heave).

209 *TLP deck structure*: The structural arrangement provided for supporting the topside equipment or modules. Normally, the deck serves the purpose of being the major structural component to ensure that the pontoons, columns and deck act as one structural unit to resist environmental and gravity loads.

210 *TLP foundation*: Defined as those installations at, or in, the seafloor which serve as anchoring of the tendons and provides transfer of tendon loads to the foundation soil.

211 *TLP hull*: Consists of buoyant columns, pontoons and intermediate structural bracings, as applicable.

212 *TLP tendon system*: Comprises all components between, and including the top connection(s) to the hull and the bottom connection(s) to the foundation(s). Guidelines, control lines, umbilicals etc. for tendon service and or other permanent installation aids are considered to be included as part of the tendon system.

213 *Vortex induced motions (VIM)*: Vortex induced motion (VIM): Transverse (cross) and in-line, current induced floater motions.

214 *Vortex induced vibrations (VIV)*: The in-line and transverse oscillation of a tendon, riser, or floater in a current induced by the periodic shedding of vortices.

215 *Wave frequency (WF) responses*: TLP linear rigid body motions at the dominating wave periods.

D. Abbreviations and Symbols

D 100 Abbreviations

Table D1 Abbreviations	
Abbreviation	In full
ALS	Accident limit states
AUT	Automatic ultrasonic testing
BTI	Bottom tendon interface
BTC	Bottom tendon connector
DFF	Design fatigue factors
DNV	Det Norske Veritas
FLS	Fatigue limit states
HF	High frequency
HRP	Heave restrained platform
IC	Inspection category
LAJ	Length adjustment joint
LAT	Lowest astronomical tide
LMP	Load management program
OS	Offshore standard
OSS	Offshore service specification
LF	Low frequency
LRFD	Load and resistance factor design
NDT	Non-destructive testing
QTF	Quadratic transfer function
RAO	Response amplitude operator
TLP	Tension leg platform
TLWP	Tension leg wellhead platform
TTI	Top tendon interface
TTMS	Tendon tension monitoring system
ULS	Ultimate limit states
VIM	Vortex induced motion
VIV	Vortex induced vibrations
WF	Wave frequency

D 200 Symbols

201 The following Latin symbols are used:

x_D	load effect
D	number of years
$F_X(\chi)$	long-term peak distribution
H_s	significant wave height
N_D	total number of load effect maxima during D years
T_p	wave period.

202 The following Greek symbols are used:

$\gamma_{f,D}$	load factor for deformation loads
$\gamma_{f,E}$	load factor for environmental loads
$\gamma_{f,G,Q}$	load factor for permanent and functional loads
γ_m	material factor.

E. Description of the Tendon System

E 100 General

101 Individual tendons are considered within this standard as being composed of three major parts:

- interface at the platform
- interface at the foundation (seafloor)
- link between platform and foundation.
- in most cases, tendons will also have intermediate connections or couplings along their length, see Figure 2.

102 Tendon components at the platform interface shall adequately perform the following main functions:

- apply, monitor and adjust (if possible) a prescribed level of tension to the tendon
- connect the tensioned tendon to the platform
- transfer side loads and absorb bending moments or rotations of the tendon relative to TLP.

103 Tendon components providing the link between the platform and the foundation consist of tendon elements (tubulars, solid rods etc.), termination at the platform interface and at the foundation interface, and intermediate connections of couplings along the length as required. The intermediate connections may take the form of mechanical couplings (threads, clamps, bolted flanges etc.), welded joints or other types of connections. Figure 2 shows a typical TLP tendon system.

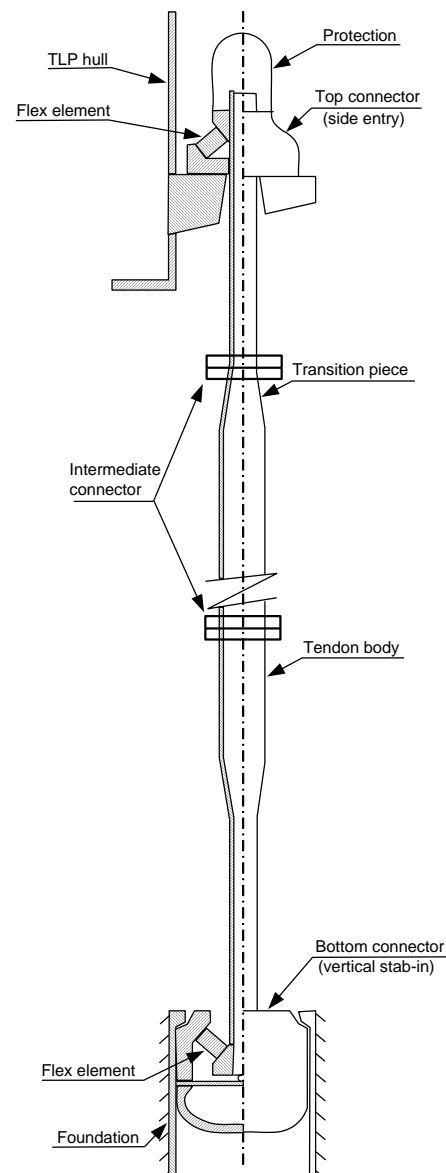


Figure 2
Typical TLP tendon system

104 Tendon components at the foundation interface shall adequately perform the following main functions:

- provide the structural connection between the tendon and the foundation
- transfer side loads and absorb bending moments, or rotations of the tendon

- tolerate certain level of tendon slacking without disengaging or buckling the tendon
- allow for future change-out of tendons (if required).

105 The tendon design may incorporate specialised components, such as:

- corrosion-protection system components
- buoyancy devices
- sensors and other types of instrumentation for monitoring the performance and condition of the tendons

- auxiliary lines, umbilicals etc. for tendon service requirements and/or for functions not related to the tendons
- provisions for tendons to be used as guidance structure for running other tendons or various types of equipment
- elastomeric elements
- intermediate connectors with watertight bulkheads for tendon compartmentation (if needed).

106 Certification requirements for tendon system are specified in Appendix A.

SECTION 2

STRUCTURAL CATEGORISATION, MATERIAL SELECTION AND INSPECTION PRINCIPLES

A. Introduction

A 100 General

101 Selection of materials and inspection principles shall be based on a systematic categorisation of the structure according to the structural significance and the complexity of the joints or connections as given in DNV-OS-C101 Sec.4.

102 In addition to in-service operational phases, consideration shall be given to structural members and details utilised for temporary conditions, e.g. fabrication, lifting arrangements, towing and installation arrangements, etc.

103 For TLP structures that are similar to column stabilised units, the structural categorisation and extent of inspection for the structural components should follow the requirements as given in DNV-OS-C103. For TLPs that are similar to deep draught floaters, the structural categorisation and extent of inspection for the structural components should follow the requirements as given in DNV-OS-C106.

B. Structural Categorisation

B 100 General

101 Application categories for structural components are defined in DNV-OS-C101 Sec.4. Structural members of TLPs are grouped as follows, see Figure 1 and Figure 2.

Special category

- a) External shell structure in way of intersections of columns, topside deck, lower hull and tendon porch etc.
- b) "Through" material used at connections of columns, topside decks and lower hull which are designed to provide proper alignment and adequate load transfer.
- c) External brackets, portions of bulkheads, and frames which are designed to receive concentrated loads at intersections of major structural members.
- d) Tendon interfaces with the foundation and the TLP hull.
- e) Tendon and tendon connectors.
- f) Highly utilized areas supporting crane pedestals, flare booms etc.

Guidance note:

Highly stressed areas are normally considered to be areas utilized more than 85% of the allowable yield capacity.

---e-n-d---of---G-u-i-d-a-n-c-e---n-o-t-e---

Primary category

- a) External shell structure of columns, lower and upper hulls.
- b) Bulkheads, decks, stiffeners and girders which provide local reinforcement or continuity of structure in way of intersections, except areas where the structure is considered for special application.
- c) Truss rows and horizontal diagonal bracings on the deck.
- d) Main support structure of heavy substructures and equipment, e.g. cranes, life boat platform, thruster foundation

and helicopter deck.

Secondary category

- a) Bulkheads, stiffeners, flats or decks and girders in columns, decks and lower hulls, which are not considered as primary or special application.
- b) Horizontal braces and members on the decks.
- c) Well-bay trusses and reaming members.
- d) Other structures not categorised as special or primary.

102 When using composite materials the structural categories (special, primary and secondary) as defined in B101 are equivalent to safety class high, normal and low in DNV-OS-C501 Sec.2.

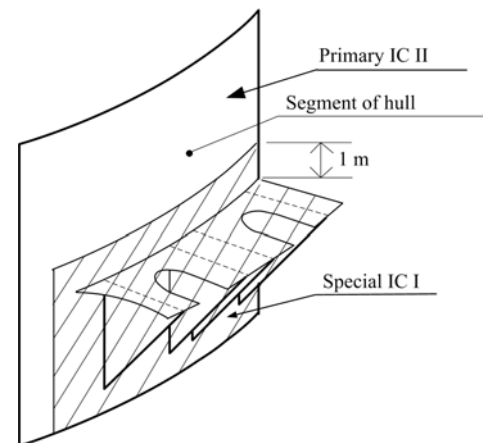
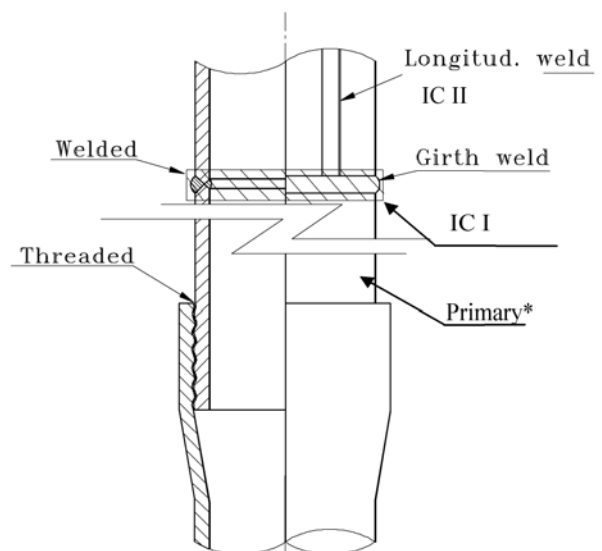


Figure 1
Principles of the extent of structural categorisation special and inspection categories at tendon foundation



* Special if damaged condition is not fulfilled.

Figure 2
Example of tendon connections

C. Material Selection

C 100 General

101 Material specifications shall be established for all structural materials. Such materials shall be suitable for their intended purpose and have adequate properties in all relevant design conditions. Material selection shall be undertaken in accordance with the principles given in DNV-OS-C101.

102 Examples of considerations with respect to structural categorisation of tendons and tendon interfaces are given in the Figure 1 and Figure 2. These examples provide minimum requirements.

103 Material selection is defined in DNV-OS-C101.

Further detailed information about material designation is defined in DNV-OS-B101.

104 Composite materials shall be designed in accordance with DNV-OS-C501.

C 200 Design temperatures

201 For TLPs, materials in structures above the lowest astronomical tide (LAT) shall be designed for service temperatures lower or equal to the lowest daily mean temperature in air for the area(s) where the unit is to operate.

202 Materials in structures below the LAT are normally to be designed for service temperatures of 0°C. A higher service temperature may be used if adequate supporting data shows relative to the lowest daily mean temperature applicable to the relevant actual water depths.

D. Fabrication Inspection Categories

D 100 General

101 Welding and the extent of non-destructive testing (NDT) during fabrication, shall in general be in accordance with the requirements stipulated for the appropriate inspection category as defined in DNV-OS-C101 Sec.4.

102 Inspection categories determined in accordance with DNV-OS-C101 provide requirements for the minimum extent of required inspection. When considering the consequences during in-service operation, it may be necessary to specify more demanding inspection requirements than the required minimum. Examples are in way of complex connections with limited or difficult access, or special material/process without proven characteristics..

103 When determining the extent of inspection and the locations of required NDT, in addition to evaluating design parameters (for example fatigue utilisation), consideration should be given to relevant fabrication parameters including:

- location of block (section) joints
- manual versus automatic welding
- start and stop of weld etc.
- materials and criticality of location
- types of NDT used
- first time welds or repair welds.

104 The Figure 1 and Figure 2 shows examples of structural categorisation and inspection category (IC).

105 Inspection of composite components is described in DNV-OS-C501 Sec.12 B. Quality aspects regarding fabrication are described in DNV-OS-C501 Sec.11.

SECTION 3 DESIGN PRINCIPLES

A. Introduction

A 100 General

101 The following basic design criteria shall be complied with for the TLP design:

- a) The TLP shall be able to sustain all loads liable to occur during all relevant temporary and operating design conditions for all applicable limit states.
- b) Wave loading on the deck structure should not occur in the ultimate limit states (ULS). Wave loading on the deck structure may be accepted in the accidental limit states (ALS) condition provided that such loads are adequately included in the design.
- c) Momentary (part of a high frequency cycle) loss of tendon tension may be accepted provided it can be documented that there will be no detrimental effects on tendon system and supporting (foundation and hull) structures, and it would not cause the tendon to become disengaged.

102 Operating tolerances shall be specified and shall be achievable in practice. Normally, the most unfavourable operating tolerances shall be included in the design. Active operation shall not be dependent on high reliability of operating personnel in an emergency situation.

Guidance note:

Active operation of the following may be considered in an emergency situation, as applicable:

- ballast distribution
- weight distribution
- tendon tension
- riser tension.

A clearly defined and well calibrated Load Management Program or equivalent shall be available onboard to facilitate safe management of these parameters in normal operation and emergency situation. Details of Load Management Program is given in Appendix A, E1100.

---e-n-d---of---G-u-i-d-a-n-c-e---n-o-t-e---

B. Design Conditions

B 100 General

101 The structure shall be designed to resist relevant loads associated with conditions that may occur during all stages of the life cycle of the unit. Such stages may include:

- fabrication
- site moves
- mating
- sea transportation
- installation
- operation
- decommissioning.

102 Structural design covering marine operation and fabrication sequences shall be undertaken in accordance with DNV-OS-C101.

103 Marine operations may be undertaken in accordance with the requirements stated in Rules for Planning and Execution of Marine Operations. All marine operations shall, as far as practicable, be based upon well proven principles, techniques, systems and equipment and shall be undertaken by

qualified, competent personnel possessing relevant experience.

104 Structural responses resulting from one temporary phase condition (e.g. a fabrication or transportation operation) that may affect design in another phase shall be clearly documented and considered in all relevant design workings.

B 200 Fabrication

201 The planning of fabrication sequences and the methods of fabrication shall be performed. Loads occurring in fabrication phases shall be assessed and, when necessary, the structure and the structural support arrangement shall be evaluated for structural adequacy.

202 Major lifting operations shall be evaluated to ensure that deformations are within acceptable levels, and that relevant strength criteria are satisfied.

B 300 Hull and deck mating

301 All relevant load effects incurred during mating operations shall be considered in the design process, e.g. hydrostatic load, lock-in stresses, tolerances, deflections, snatch/shock loads (if applicable) etc.

B 400 Sea transportation

401 A detailed transportation assessment shall be undertaken which includes determination of the limiting environmental criteria, evaluation of intact and damage stability characteristics, motion response of the global system and the resulting, induced load effects. The occurrence of slamming loads on the structure and the effects of fatigue during transport phases shall be evaluated when relevant.

The accumulated fatigue damage during transportation phases shall be included in the fatigue assessment of in-place condition.

402 In case of transportation (surface or sub surface) of tendons; this operation shall be carefully planned and analysed. Special attention shall be given to attachment or securing of buoyancy modules. Model testing shall be considered.

403 Satisfactory compartmentation and stability during all floating operations shall be ensured. See details in Sec.6 for ULS condition and Sec.8 for ALS condition.

404 All aspects of the transportation, including planning and procedures, preparations, seafastening and marine operations should comply with the requirements of the warranty authority.

B 500 Installation

501 Installation procedures of foundations (e.g. piles, suction anchor or gravity based structures) shall consider relevant static and dynamic loads, including consideration of the maximum environmental conditions expected for the operations.

502 For novel installation activities (e.g. foundations and tendons), relevant model testing should be considered.

503 Free standing tendon (pending TLP installation) phases shall be considered with respect to loads and responses.

504 The loads induced by the marine spread mooring involved in the operations, and the forces exerted on the structures utilised in positioning the unit, such as fairleads and pad eyes, shall be considered for local strength checks.

505 For segmented tendons, tendon buckling should also be checked for the lifting of the segment during installation.

B 600 Decommissioning

601 Decommissioning and removal of the unit shall be planned for in the design stage.

C. Design Principles, Tendons

C 100 General

101 Essential components of the tendon system shall be designed by the principle that, as far as practicable, they are to be capable of being inspected, maintained, repaired and/or replaced.

102 Tendon mechanical components shall, as far as practicable, be designed to be “fail safe”. Consideration is to be given in the design to possible early detection of failure for essential components, which cannot be designed according to this principle.

103 Certain vital tendon components may, due to their specialized functions, and if unproven, require engineering and prototype qualification testing to determine:

- confirmation of anticipated design performance
- fatigue characteristics
- fracture characteristics
- corrosion characteristics
- mechanical characteristics.

104 A TLP shall be designed with sufficient safety margin to prevent the potential of tendon rupture. The tendon system and the securing or supporting arrangements shall be designed in such a manner that a possible failure or removal of one tendon is not to cause progressive tendon failure or excessive damage to the securing or supporting arrangement at the platform or at the foundation.

105 A fracture control strategy should be adopted to ensure consistency of design, fabrication and in service monitoring assumptions. The objective of such a strategy is to ensure that

the largest undetected flaw from fabrication of the tendons will not grow to a size that could induce failure within the design life of the tendon, or within the planned in-service inspection interval, within a reasonable level of reliability. Elements of this strategy include:

- adequate design fatigue life
- adequate fracture toughness
- reliability of inspection during fabrication
- in-service inspection intervals and methods.

See Sec.7 for guidance on fracture control and required fatigue life for tendons.

106 Inspection to detect damage due to accidental loads or overloads may be replaced by monitoring the loads and comparing them to the design loads, provided that the events can be measured by the monitoring system. If this method is used the component must be replaced after any overload occurrence or other events exceeding the design scenario.

107 All materials liable to corrode shall be protected against corrosion. Special attention should be given to:

- local complex geometries
- areas that are difficult to inspect or repair
- consequences of corrosion damage
- possibilities for electrolytic corrosion
- dissimilar metal.

108 All sliding surfaces shall be designed with sufficient additional thickness against wear. Special attention should be given to the following:

- cross-load bearings
- seals
- ball joints.

109 Satisfactory considerations shall be given to settlement or subsidence, which may be a significant factor in determining tendon-tension adjustment requirements.

SECTION 4 DESIGN LOADS

A. General

A 100 General

101 Characteristic loads are to be used as reference loads. Design loads are, in general, defined in DNV-OS-C101. Guidance concerning load categories relevant for TLP designs are given in B.

B. Load Categories

B 100 General

101 All relevant loads that may influence the safety of the structure or its parts from commencement of fabrication to permanent decommissioning should be considered in design. The different loads are defined in DNV-OS-C101.

102 For the deck and hull of the TLP, the loads are similar to those described in DNV-OS-C103 for TLPs similar to column stabilised units. TLPs similar to deep draught floaters are to be designed with loads as given in DNV-OS-C106. Loads are described in the above with exception of the tendon loads (inclusive potential ringing and springing effects).

103 In relation to determination of environmental conditions and loads, see Classification Note 30.5 and DNV-OS-C501 for composites.

104 The wave loads on the tendons may be described as recommended in Classification Note 30.5 for slender structures with significant motions.

105 The disturbance of wave kinematics from hull (columns and pontoons) in relation to the riser system and tendons shall be accounted for if it is of importance.

106 The earthquake loads at the foundation of the tendons are described in DNV-OS-C101.

107 The following loads should be considered:

- permanent loads
- variable functional loads
- environmental loads
- deformation loads

- accidental loads.

108 For preliminary design stages it is recommended that "contingency factors" are applied in relation to permanent loads to reflect uncertainties in load estimates and centres of gravity.

109 "Contingency factors" should also be considered for early design stages in relation to variable functional loads, especially for minimum facilities TLPs (e.g. TLWP and Mini TLP).

110 The environmental loads are summarised as:

- wind loads
 - mean (sustained) wind
 - dynamic (gust) wind
- wave and current loads
 - loads on slender members
 - loads induced by TLP motions
 - slamming and shock pressure
 - wave diffraction and radiation
 - mean drift forces
 - higher order non-linear wave loads (slowly varying, ringing and springing)
 - wave enhancement
 - vortex shedding effects
- marine growth
- snow and ice accumulation
- direct ice loads (icebergs and ice flows)
- earthquake
- tidal and storm surge effects
- effects from sand/marine growth getting into the connectors or the tendon body
- resistance to sunlight during transport, storage and operation if above the water.

111 Resistance of the tendon (i.e. for "dry lock-off" systems) to fire on or near the platform shall be evaluated.

SECTION 5 GLOBAL PERFORMANCE

A. Introduction

A 100 General

101 The selected methods of response analysis are dependent on the design conditions, dynamic characteristics, non-linearities in loads and response and the required accuracy in the actual design phase.

Guidance note:

For a detailed discussion of the different applicable methods for global analysis of tension leg platforms, see API RP 2T.

---e-n-d---of---G-u-i-d-a-n-c-e---n-o-t-e---

102 The selected methods of analysis and models employed in the analysis shall include relevant non-linearities and motion-coupling effects. The approximations, simplifications and/or assumptions made in the analysis shall be justified, and their possible effects shall be quantified e.g. by means of simplified parametric studies.

103 During the design process, the methodology and software used for analytical or numerical prediction of important system responses shall be verified (calibrated) by appropriate model tests.

104 Model tests may also be used to determine specific responses for which numerical or analytical procedures are not yet fully developed and recognised.

105 Motion components shall be determined, by relevant analysis techniques, for those applicable design conditions (design analyses matrix) specified in DNV-OS-C101. The basic assumptions and limitations associated with the different methods of analysis of global performance shall be duly considered prior to the selection of the methods. Typically a combination of frequency domain and time domain analyses will be applied by the designers.

106 The TLP should be analysed by methods as applicable to column-stabilised units or deep draught floaters when the unit is free floating, respectively see DNV-OS-C103 or DNV-OS-C106.

107 The method of global performance analysis as outlined in this standard is one approximate method that may be applied. The designer is encouraged also to consider and apply other methods in order to discover the effects of possible inaccuracies etc. in the different methods.

B. Frequency Domain Analysis

B 100 General

101 Frequency domain high frequency (HF), wave frequency (WF) and low frequency (LF) analyses techniques may be applied for a TLP. Regarding load effects due to mean wind, current and mean wave drift, see DNV-OS-C101.

102 For typical TLP geometries and tendon arrangements, the analysis of the total dynamic load effects may be carried out as:

- a HF analysis of springing
- a WF analysis in all six degrees of freedom
- a LF analysis in surge, sway and yaw.

103 The following assumptions are inherent in adopting such an independent analysis approach:

- the natural frequencies in heave, roll and pitch are

included in the wave frequency analysis

- the natural frequencies in surge, sway and yaw are included in the low frequency analysis
- the high and low natural frequencies are sufficient separate to allow independent dynamic analysis to be carried out
- the low frequency excitation forces have negligible effect on the wave frequency motions
- the low frequency excitation forces have a negligible dynamic effect in heave, roll and pitch
- tendon lateral dynamics are unimportant for platform surge or sway motions.

104 Typical parameters to be considered for global performance analyses are different TLP draughts, wave conditions and headings, tidal effects, storm surges, set down, foundation settlement(s), subsidence, mispositioning, tolerances, tendon flooding, tendon removal and hull compartment(s) flooding. Possible variations in vertical centre of gravity shall also be analysed (especially if ringing responses are important).

This may be relevant in case of:

- change in operation mode (e.g. drilling/production)
- changes in topside weights (e.g. future modules)
- tendon system changes (altered utilisation)
- changes in ballast weights or distributions
- deviations from weight estimate
- riser phasing scenarios
- lateral positioning.

B 200 High frequency analyses

201 Frequency domain springing analyses shall be performed to evaluate tendon and TLP susceptibility to springing responses.

202 Recognised analytical methods exist for determination of springing responses in tendons. These methods include calculation of Quadratic Transfer Functions (QTF's) for axial tendon (due to sum frequency loads on the hull) stresses which is the basis for determination of tendon fatigue due to springing.

203 Total damping level applied in the springing response analyses shall be duly considered and documented.

B 300 Wave frequency analyses

301 A wave frequency dynamic analysis may normally be carried out by using linear wave theory in order to determine first-order platform motions and tendon response.

302 First order wave load analyses shall also serve as basis for structural response analyses. Finite wave load effects shall be evaluated and taken into account. This may e.g. be performed by use of beam models and application of Morison load formulation and finite amplitude waves.

303 In linear theory, the response in regular waves (transfer functions) is combined with a wave spectrum to predict the response in irregular seas.

304 The effect of low-frequency set-down variations on the WF analysis is to be investigated by analysing at least two representative mean offset positions determined from the low-frequency analysis.

305 Set-down or offset induced heave motion may be included in the wave frequency response amplitude operators (RAOs).

306 A sufficient number of wave approach headings shall be selected for analyses (e.g. with basis in global configuration, number of columns, riser configuration etc.).

307 In determination of yaw induced fatigue responses (e.g. tendon and flex element design) due account must be given to wave spreading when calculating the long term responses.

B 400 Low frequency analyses

401 A low frequency dynamic analysis could be performed to determine the slow drift effects at early design stages due to fluctuating wind and second order wave loads.

402 Appropriate methods of analysis shall be used with selection of realistic damping levels. Damping coefficients for low frequency motion analyses are important as the low frequency motion may be dominated by resonant responses.

C. Time Domain Analyses

C 100 General

101 For global motion response analyses, a time domain approach will be beneficial. In this type of analyses it is possible to include all environmental load effects and typical non-linear effects such as:

- hull drag forces (including relative velocities)
- finite wave amplitude effects
- non-linear restoring (tendons, risers).

102 Highly non-linear effects such as ringing may also require a time domain analysis approach. Analytical methods exist for estimation of ringing responses. These methods may be used for the early design stage, but shall be correlated against model tests for the final design. Ringing and springing responses of hull and deck may however be analysed within the frequency domain with basis in model test results, or equivalent analytical results.

103 For deep waters, a fully coupled time domain analysis of tendons, risers and platform may be required. This may e.g. be relevant if:

- model basin scale will not be suitable to produce reliable design results or information
- consistent global damping levels (e.g. in surge, sway and yaw) due to the presence of slender structures (risers, tendons) are needed
- it is desirable to perform the slender structure response analyses with basis in coupled motion analyses.

104 A relevant wave spectrum shall be used to generate random time series when simulating irregular wave elevations and kinematics.

105 The simulation length shall be long enough to obtain sufficient number of LF maxima (surge, sway and yaw).

106 Statistical convergence shall be checked by performing sensitivity analyses where parameters as input seed, simulation length, time step, solution technique etc. are varied.

107 Determination of extreme responses from time domain analyses shall be performed according to recognised principles.

108 Depending on selected TLP installation method, time domain analyses will probably be required to simulate the situation when the TLP is transferred from a free floating mode to the vertical restrained mode. Model testing shall also be considered in this context.

Guidance note:

Combined loading

Common practice to determine extreme responses has been to expose the dynamic system to multiple stationary design envi-

ronmental conditions. Each design condition is then described in terms of a limited number of environmental parameters (e.g. Hs, Tp) and a given seastate duration (3 to 6 hours). Different combinations of wind, wave and current with nearly the same return period for the combined environmental condition are typically applied.

The main problem related to design criteria based on environmental statistics is that the return period for the characteristic load effect is unknown for non-linear dynamic systems. This will in general lead to an inconsistent safety level for different design concepts and failure modes.

A more consistent approach is to apply design based on response statistics. Consistent assessment of the *D*-year load effect will require a probabilistic response description due to the long-term environmental loads on the system. The load effect with a return period of *D*-year, denoted x_D , can formally be found from the long-term load effect distribution as:

$$F_X(x_D) = 1 - 1/N_D$$

N_D = total number of load effect maxima during *D* years

$F_X(x)$ = long-term peak distribution of the (generalised) load effect

The main challenge related to this approach is to establish the long-term load effect distribution due to the non-linear behaviour. Design based on response statistics is in general the recommended procedure and should be considered whenever practicable for consistent assessment of characteristic load effects.

Further details may be found in Appendices to DNV-OS-F201.

For guidance on coupled analysis, see DNV-RP-F205.

---e-n-d---of---G-u-i-d-a-n-c-e---n-o-t-e---

D. Model Testing

D 100 General

101 Model testing will usually be required for final check of TLP designs. The main reason for model testing is to check that analytical results correlate with model tests.

102 The most important parameters to evaluate are:

- air-gap
- first order motions
- total offset
- set-down
- WF motions versus LF motions
- tendon responses (maximum and minimum)
- accelerations
- ringing
- springing
- susceptibility to hull VIM.

103 The model scale applied in testing shall be appropriate such that reliable results can be expected. A sufficient number of seastates need to be calibrated covering the relevant limit states.

104 Wave headings, multidirectional sea, tests with wind, wave and current, wave steepness and other variable parameters (water levels, vertical centre of gravity, etc.) need to be varied and tested as required.

105 If HF responses (ringing and springing) shows to be governing for tendon extreme and fatigue design respectively, the amount of testing may have to be increased to obtain confidence in results.

E. Load Effects in the Tendons

E 100 General

101 Load effects in the tendons comprise mean and dynamic components.

102 The steady state loads may be determined from the equilibrium condition of the platform, tendon and risers.

103 Tendon dynamic load effects arise from platform motions, any ground motions and direct hydrodynamic loads on the tendon.

104 Dynamic analysis of tendon responses shall take into account the possibility of platform heave, roll and pitch excitation (springing and ringing effects).

105 Linearised dynamic analysis does not include some of the secondary wave effects, and may not model accurately

extreme wave responses. A check of linear analysis results using non-linear methods may be necessary. Model testing may also be used to confirm analytical results. Care shall be exercised in interpreting model-test results for resonant responses, particularly for loads due to platform heave, roll and pitch, since damping may not be accurately modelled.

106 Lift and overturning moment generated on the TLP by wind loads shall be included in the tendon response calculations.

107 Susceptibility to vortex induced vibrations shall be evaluated in operational and non-operational phases.

108 Interference (tendon/riser, tendon/tendon, tendon/hull, and tendon/foundation) shall be evaluated for non-operational as well as the operational phase.

SECTION 6 ULTIMATE LIMIT STATES (ULS)

A. Introduction

A 100 General

101 General considerations in respect to methods of analysis and capacity checks of structural elements are given in DNV-OS-C101.

102 The TLP hull shall be designed for the loading conditions that will produce the most severe load effects on the structure. A dynamic analysis shall be performed to derive the characteristic largest stresses in the structure.

103 Analytical models shall adequately describe the relevant properties of loads, stiffness and displacement, and shall account for the local and system effects of, time dependency, damping and inertia.

104 The LRFD format shall be used when the ULS capacity of the structure is checked. Two combinations shall be checked, a) and b). The load factors are defined in DNV-OS-C101 Sec.2 D400 and values are given in Table A1.

Table A1 Load factors – Ultimate limit states

Combina- tion of design loads	Load categories		
	Permanent and variable func- tional loads, $\gamma_{f,G,Q}$	Environmental loads, $\gamma_{f,E}$	Deformation loads, $\gamma_{f,D}$
a)	1.2 ¹⁾	0.7	1.0
b)	1.0	1.3	1.0

1) If the load is not well defined e.g. masses or functional loads with great uncertainty, possible overfilling of tanks etc. the coefficient should be increased to 1.3.

105 The loads shall be combined in the most unfavourable way, provided that the combination is physically feasible and permitted according to the load specifications. For permanent loads, a load factor of 1.0 in load combination a) shall be used where this gives the most unfavourable response. Other considerations for the partial coefficients are given in DNV-OS-C101.

106 The material factor γ_m for ULS yield check should be 1.15 for steel. The material factor γ_m for ULS buckling check is given in DNV-OS-C101 Sec.5.

107 The material factors for composites are given in DNV-OS-C501 Sec.8 B700 for use with this standard.

A 200 Stability

201 The intact and damaged stability of a TLP in free-floating condition during construction, tow out and installation stages shall, in general, satisfy requirements applicable to column- stabilized units as defined in DNV-OS-C301.

202 Stability of a TLP in the in-place condition is typically provided by the pretension and stiffness of the tendon system, rather than by the waterplane area. The stability analysis is to demonstrate that the system is sufficiently constrained by the tendon system, and is safe from overturning in all environmental conditions. It is therefore important to monitor the weight change and COG (Center of Gravity) shift in various operational modes and environmental conditions.

203 The allowable horizontal shift of the COG shall be calculated for at least the following three load conditions or operational modes:

- still water
- operating environment

— survival environment.

204 The allowable shift of COG may be presented as an envelope relative to the originally calculated COG.

205 The allowable weight and horizontal COG shift shall be calculated based on maximum and minimum allowable tendon tension. Variation of the vertical COG, which results in changes in motion response and dynamic loads, shall be taken into account in the calculation.

206 An inclining test or equivalent procedure shall be conducted to accurately determine the weight and COG of the TLP. Proper load management tools shall be installed onboard and appropriate procedures shall be defined in the operations manual to control weight, COG and tendon tensions during service.

B. Hull

B 100 General

101 The following analysis procedure to obtain characteristic platform-hull response shall be applied:

1) *Analysis of the initial mean position in still water condition*

In this analysis, all vertical loads are applied (weights, live loads, buoyancy etc.) and equilibrium is achieved taking into account pretension in tendons and risers.

2) *Mean response analysis*

In this analysis the lateral mean wind, mean wave-drift and current loads are applied to the TLP resulting in a static offset position with a given set-down.

3) *Wave response analysis*

Design wave approach

To satisfy the need for simultaneity of the responses, a design wave approach may be used for maximum stress analysis.

The merits of the stochastic approach are retained by using the extreme stochastic values of some characteristic parameters in the selection of the design wave. Effects due to offset as described in 2) shall be taken into account in the analysis.

or

Spectral approach

An analysis is carried out using 'n' wave frequencies from 'm' directions. Effects due to offset as described in 2) shall be taken into account in the analysis. Traditional spectral analysis methods should be used to compute the relevant response spectra and their statistics.

Guidance note:

When using Design wave approach, it is important to capture all the waves that induce most critical characteristic responses, e.g. max squeeze/pry loads, max accelerations, max tendon tensions etc. The most important design wave for a conventional four-column TLP design is the wave that maximizes squeeze and pry loads. The critical value for this response generally occurs with the waves approaching along the platform diagonal axis, with a wavelength being slightly more than twice the diagonal column centreline spacing. This response will normally give the maximum moment at the connection between the pontoons (or braces) and columns, and/or connection between the deck and columns.

---e-n-d---of---G-u-i-d-a-n-c-e---n-o-t-e---

102 For a TLP hull, the following characteristic global sectional loads due to wave forces shall be considered as a minimum:

- split forces (transverse, longitudinal or oblique sea for odd columned TLPs)
- torsional moment about a transverse and longitudinal, horizontal axis (in diagonal or near-diagonal)
- longitudinal opposed forces between parallel pontoons (in diagonal or near-diagonal seas)
- longitudinal, transverse and vertical accelerations of deck masses.

103 It is recommended that a full stochastic wave load analysis is used as basis for the final design.

104 Local load effects (e.g. maximum direct environmental load on an individual member, wave slamming loads, external hydrostatic pressure, ballast distribution, internal tank pressures etc.) shall be considered. Additional loads from e.g. high-frequency ringing accelerations shall be taken into account.

105 Hull vibration due to current induced vibration of tendons or risers shall be evaluated.

B 200 Structural analysis

201 For global structural analysis, a complete three-dimensional structural model of the TLP is required. See DNV-OS-C101 Sec.5 and DNV-OS-C103 Sec.4 and App.B.

202 Additional detailed finite-element analyses may be required for complex joints and other complicated structural parts to determine the local stress distribution more accurately and/or to verify the results of a space-frame analysis. See also DNV-OS-C103.

203 Local environmental load effects, such as wave slamming and possible wave- or wind-induced vortex shedding, are to be considered as appropriate.

B 300 Structural design

301 Special attention shall be given to the structural design of the tendon supporting structures to ensure a smooth transfer and redistribution of the tendon concentrated loads through the hull structure without causing undue stress concentrations.

302 The internal structure in columns in way of bracings should to be designed stronger than the axial strength of the bracing itself.

303 Special consideration shall be given to the pontoon strength in way of intersections with columns, accounting for possible reduction in strength due to cut-outs and stress concentrations.

304 Special attention shall be given to the structural design of the columns in way of intersection with deck structure to ensure smooth load transfer.

C. Deck

C 100 General

101 Structural analysis and design of deck structure shall follow the principles as outlined in DNV-OS-C103, additional load effects (e.g. global accelerations) from high-frequency ringing and springing shall be taken into account when relevant.

102 Deck vibration due to current induced vibration of tendons or risers shall be evaluated

C 200 Air gap

201 In the ULS condition, positive air gap should be ensured, see DNV-OS-C103 Sec.4 D. However, wave impact may be permitted to occur on any part of the structure provided that it

can be demonstrated that such loads are adequately accounted for in the design and that safety to personnel is not significantly impaired.

202 Analysis undertaken to document air gap should be calibrated against relevant model test results. Such analysis shall include relevant account of:

- wave and structure interaction effects
- wave asymmetry effects
- global rigid body motions (including dynamic effects)
- effects of interacting systems (e.g. riser systems)
- maximum or minimum draughts (set down, tidal surge, subsidence, and settlement effects).

203 Column 'run-up' load effects shall be accounted for in the design of the structural arrangement in way of the column or deck box connection. These 'run-up' loads shall be treated as an environmental load component, however, they need not to be considered as occurring simultaneously with other environmental responses.

204 Evaluation of air gap adequacy shall include consideration of all influenced structural items including lifeboat platforms, riser balconies, overhanging deck modules and module support beams.

D. Tendons

D 100 Extreme tendon tensions

101 As a minimum the following tension components shall be taken into account:

- pretension (static tension)
- tide (tidal effects)
- storm surge (positive and negative values)
- tendon weight (submerged weight)
- overturning (due to current, mean wind or drift load)
- set down (due to current, mean wind or drift load)
- WF tension (wave frequency component)
- LF tension (wind gust and slowly varying drift)
- ringing (HF response)
- hull VIM influence on tendon responses
- tendon VIV induced loads.

102 Additional components to be considered are:

- margins for fabrication, installation and tension reading tolerances
- operational requirements (e.g. operational flexibility of ballasting operations)
- allowance for foundation mispositioning
- field subsidence
- foundation settlement and uplift
- loads due to spooling during transportation and storage of flexible tendons.

103 Bending stresses along the tendon shall be analysed and taken into account in the design. For the constraint mode the bending stresses in the tendon will usually be low. In case of surface, or subsurface tow (non-operational phase) the bending stresses shall be carefully analysed and taken into account in the design.

104 For nearly buoyant tendons the combination of environmental loads (axial and bending) and high hydrostatic water pressure may be a governing combination (buckling).

105 Limiting combinations (envelopes) of tendon tension and rotations (flex elements) need to be established.

106 For specific tendon components such as couplings, flex elements, top and bottom connections etc. the stress distribution shall be determined by appropriate finite element analysis.

107 If temporary (part of a high frequency cycle) tendon tension loss is permitted, tendon dynamic analyses shall be conducted to evaluate its effect on the complete tendon system and supporting structures. Alternatively, model tests may be performed. The reasoning behind this is that loss of tension could result in detrimental effects to e.g. tendon body, connectors, or flex elements.

D 200 Structural design of tendons

201 The structural design of tendons shall be carried out according to DNV-OS-C101 with the additional considerations given in this subsection.

202 Buckling checks of tendon body may be performed according to API RP 2T or NORSOK, N-004.

203 When deriving maximum stresses in the tendons relevant stress components shall be superimposed on the stresses due to maximum tendon tension, minimum tendon tension or maximum tendon angle, as relevant.

204 Such additional stress components may be:

- tendon-bending stresses due to lateral loads and motions of the tendon
- tendon-bending stresses due to flex-element rotational stiffness
- thermal stresses in the tendon due to temperature differences over the cross sections
- hoop stresses due to hydrostatic pressure.

205 Composite tendons shall be designed in accordance with DNV-OS-C501 with additional considerations given in this section.

E. Foundations

E 100 General

101 Foundations may be designed according to the requirements in DNV-OS-C101 Sec.11.

102 Relevant combinations of tendon tensions and angles of load components shall be analysed for the foundation design.

103 For gravity foundations the pretension shall be compensated by submerged weight of the foundation, whereas the varying loads may be resisted by for example suction and friction.

F. Scantlings and Weld Connections

F 100 General

101 Minimum scantlings for plate, stiffeners and girders are given in DNV-OS-C101 Sec.5.

102 The requirements for weld connections are given in DNV-OS-C101 Sec.9.

SECTION 7 FATIGUE LIMIT STATES (FLS)

A. Introduction

A 100 General

101 Structural parts where fatigue may be a critical mode of failure shall be investigated with respect to fatigue. All significant loads contributing to fatigue damage (non-operational and operational) shall be taken into account. For a TLP, the effects of springing and ringing resonant responses shall be considered for the fatigue limit state.

102 Fatigue design may be carried out by methods based on fatigue tests and cumulative damage analysis, methods based on fracture mechanics, or a combination of these.

103 General requirements for fatigue design are given in DNV-OS-C101, DNV-OS-C103, DNV-RP-C203.

Industry accepted fatigue S-N curves different from the DNV standards may be considered for acceptance. Fatigue design for composite tendon is given in DNV-OS-C501.

Improved fatigue performance (comparing to what is defined in DNV-RP-C203) of base material may be accounted for in the design provided that the fatigue performance and fracture mechanic properties of the same are documented through testing.

104 Careful design of details as well as stringent quality requirements for fabrication are essential in achieving acceptable fatigue strength. It is to be ensured that the design assumptions made concerning these parameters are achievable in practice.

105 The results of fatigue analyses shall be fully considered when the in-service inspection plans are developed for the platform.

B. Hull

B 100 General

101 Fatigue design of hull structure shall be performed in accordance with principles given in DNV-OS-C103.

C. Deck

C 100 General

101 Fatigue design of deck structure shall be performed in accordance with principles given in DNV-OS-C103.

D. Tendons

D 100 General

101 All parts of the tendon system shall be evaluated for fatigue.

102 First order wave loads (direct or indirect) will usually be governing, however also fatigue due to springing shall be carefully considered and taken into account. Combined load effect due to wave frequency, high frequency and low frequency loads shall be considered in fatigue analysis.

103 In case of wet transportation (surface or subsurface) to field, these fatigue contributions shall be accounted for in design.

104 Vortex induced vibrations (VIV) shall be considered and

taken into account. This applies to operation and non-operational (e.g. tendon free standing) phases.

105 Size effects (e.g. length of weld, number of connections) of welds and couplings etc. shall be evaluated.

For guidance see Sec.2.3 and Commentary 2,3 in DNV-RP-C203.

106 Tendon and tendon components shall have a minimum Design Fatigue Factor (DFF) of 10.

107 Fracture toughness of tendon components and welds shall be sufficient to meet design fatigue life and fracture criteria.

Guidance note:

Fracture toughness testing is performed to establish material properties that in turn can be used to calculate critical flaw sizes. The most common testing is CTOD (Crack Tip Opening Displacement) testing which in most cases are done using 3-point bend specimens. Testing should be performed for both base material and fusion line locations. As a minimum 3 tests should be performed per location and the lowest value of the 3 test results should be used in fracture toughness assessments. Further guidance on fracture toughness testing and assessments can be found in DNV-OS-F101, Section 12, subsection G and Appendix B, A800.

CTOD tests performed in bending may give very conservative results. One way to reduce the conservatism is to perform the testing in tension (SENT specimens). Test performed like this will give a testing condition (constraint) close to that associated with a defect in a girth welded pipe loaded in tension. For SENT testing a minimum of 6 specimens per location will be required.

In case of materials with good fracture toughness properties (typically CTOD values above 0.25 mm), CTOD – Resistance or J – Resistance testing should be performed to establish the tearing resistance of the material.

---e-n-d---of---G-u-i-d-a-n-c-e---n-o-t-e---

108 Fracture mechanics assessment shall be performed in accordance with BS7910 or equivalent standard to estimate crack growth rates, define maximum allowable flaw sizes and thus help define inspection intervals and monitoring strategies.

109 The maximum allowable flaws under extreme design loads shall not grow to a critical size causing unstable crack growth in 5 times the tendon design life or tendon inspection period, whichever is less. The preferred critical flaw is a through-thickness fatigue crack. All possible initial flaws including surface flaws, embedded flaws and through thickness flaws shall be considered. Various aspect ratio and initial location shall be evaluated. Stress concentration factors (SCFs) shall be included when assessing the maximum allowable flaw size.

110 The maximum allowable flaw size shall be reliably detectable by the NDT inspection system employed in fabrication of the tendons.

To be able to size flaw heights, an ultrasonically based NDT system (UT) must be utilised. The detection ability of an ultrasonically based NDT system shall be deemed sufficient if the probability of detecting a flaw of the smallest allowable height determined during an Engineering Critical Assessment (ECA) is 90% at a 95% confidence level and the probability of under-sizing a defect is less than 5%.

Guidance note:

In general, ultrasonic systems shall be qualified and the performance of the system shall be documented. If such documentation does not exist, fracture mechanics assessments are recommended to be carried out assuming an initial flaw size of 3 x 25 mm

(height x length) for Automated Ultrasonic Testing (AUT) or 9 x 50 mm for Manual Ultrasonic Testing.

With the AUT sensitivity level set at 50% of the echo from a 3 mm flat bottom hole, a flaw satisfying the Probability Of Detection (POD) of 90% at 95% confidence level has in most cases been found to be approx. 3mm in height. This is the basis for suggesting an initial flaw size of 3 x 25 mm for the ECA, provided no other data are available. Refer also DNV OS-F101, Appendix E, Section H related to AUT system qualification.

For manual UT, typical POD curves has been established in the Nordtest NDE Programme. With an echo of 20% of the echo from a 3 mm side drilled hole, flaw size corresponding to POD of 90% at 95% confidence level has been found to be approx. 9 mm in height. This is the basis for suggesting an initial flaw size of 9 x 50 mm to be used for the ECA, provided no other data are available.

If UT is based on smaller reference reflectors and/or better sensitivities than those stated above, a reduction of the assumed initial flaw sizes may be made, if properly justified. Unless the system can be qualified with the criteria as follows, an initial flaw size of 3 x 25 mm (height x length) should be assumed for Automatic Ultrasonic Testing (AUT) or 9 x 50 mm (height x length) should be assumed for Manual Ultrasonic Testing.

---e-n-d---of---G-u-i-d-a-n-c-e---n-o-t-e---

111 When tendons are fixed to the seabed using piles, it is also important to perform a fatigue and fracture evaluation of

the welded joints in the piles. The welds next to the tendon connection point will be the most critical as these will be exposed to the same loads as the tendons. The load due to pile driving shall be included in addition.

112 For tendon receptacles and other components connected to the pile while it is driving, fatigue damage due to pile driving shall also be taken into account.

113 Composite materials and their interfaces may also be treated with a fracture mechanics approach if a defect size can be defined and the propagation can be described. Otherwise fatigue analysis of composite materials should be described by SN curves and Miner sum calculations as given in DNV-OS-C501 Sec.6 K.

E. Foundation

E 100 General

101 Tendon responses (tension and angle) will be the main contributors for fatigue design of foundations. Local stresses shall be determined by use of finite element analyses and due attention to geotechnical properties and reaction loads. Fatigue damage due to pile driving shall also be taken into account.

SECTION 8 ACCIDENTAL LIMIT STATES (ALS)

A. General

A 100 General

101 Requirements concerning accidental events are given in DNV-OS-C101.

102 Units shall be designed to be damage tolerant, i.e. credible accidental damages, or events, should not cause loss of global structural integrity. The capability of the structure to redistribute loads should be considered when designing the structure.

103 In the design phase, attention shall be given to layout and arrangements of facilities and equipment in order to minimise the adverse effects of accidental events.

104 Satisfactory protection against accidental damage may be obtained by a combination of the following principles:

- reduction of the probability of damage to an acceptable level
- reduction of the consequences of damage to an acceptable level.

105 Structural design with respect to the ALS shall involve a two-stage procedure considering:

- resistance of the structure to a relevant accidental event
- capacity of the structure after an accidental event.

106 Global structural integrity shall be maintained both during and after an accidental event. Loads occurring at the time of a design accidental event and thereafter shall not cause complete structural collapse.

The TLP structure shall be designed to sustain one hull compartment flooding, one tendon flooding or removal of one tendon.

A 200 Stability

201 In-place stability of a TLP under accidental event shall be measured by minimum and maximum tension criteria using same principle as defined in Sec.6 A200. Allowable weight and COG shift envelope shall be established for the damaged condition using same procedure as defined in Sec.6 A200. The annual probability level of design loads, load and resistance factors are defined in DNV-OS-C101. Time lapse between the occurrence of the damage and the restoring of stability should be considered in the design to assure the safety of the TLP unit during this period. In assessing the structural strength and adequacy of the tendon tension. The following flooding scenario shall be assumed:

- 1) Any one tendon compartment
- 2) All compartments that could be flooded as a result of damages that are as minimum 1.5 m deep and 3.0 m high occurring at any level between 5.0 m above and 3.0 m below the still waterline.

Guidance note:

Due consideration shall be given for the size of the supply boats and other collision scenario before deciding the extent of the damage.

---e-n-d---of---G-u-i-d-a-n-c-e---n-o-t-e---

- 3) No vertical bulkhead shall be assumed damaged, except where bulkheads are spaced closer than a distance of one eighth of the column perimeter at the still waterline, measured at the periphery, in which case one or more of the bulkheads shall be disregarded.

All piping, ventilation systems, trunks, etc., within the extent of damage shall be assumed damaged. Positive means of closure shall be provided at watertight boundaries to preclude the progressive flooding of other spaces that are intended to be intact.

B. Hull and Deck

B 100 General

101 The most relevant accidental events for hull and deck designs are:

- dropped objects
- fire
- explosion
- collision
- unintended flooding
- abnormal wave events.

C. Tendons

C 100 General

101 The most relevant accidental events for the tendons are:

- missing tendon
- tendon flooding
- dropped objects
- flooding of hull compartment(s).

102 Tendon removal condition (e.g. for maintenance and/or inspection) requires analysis of the TLP structure with environmental loads with 10^{-2} annual probability of exceedance to satisfy the ALS. The same applies to tendon flooding, if relevant. Consideration should be given to the expected frequency of tendon removal and the length of period for which one tendon is likely to be out of service.

103 Tendon failure may have substantial consequences and therefore the tendons shall be designed with sufficient safety margin. The effect on the surrounding structure due to possible accidental failure events and the consequential release of elastic energy stored in the tendon shall be considered.

Guidance note:

Damage to the TLP from tendon failure does not need to be considered provided the annual probability of tendon failure is less than 10^{-5} due to each accidental event.

---e-n-d---of---G-u-i-d-a-n-c-e---n-o-t-e---

104 Dropped objects may cause damage to the tendons and in particular the top and bottom connectors may be exposed. Shielding may be required installed.

105 Flooding of hull compartments and the effects on design shall be analysed thoroughly.

D. Foundations

D 100 General

101 The design load cases for accidental events to be considered for the foundations shall as a minimum, include those corresponding cases considered for the tendons.

APPENDIX A CERTIFICATION OF TENDON SYSTEM

A. General

A 100 Introduction

Certification of the tendon system is accomplished through the Certification of Material and Components (CMC) from various manufacturers. Since the Tendon system itself is an extension of the main load-bearing element of the TLP, it cannot be handled in a traditional CMC manner. Design approval of these various components need to be aligned with the global performance of the TLP and applicable load cases. Approval of all the components of the Tendon system and its interfaces shall be handled by the same DNV office whose is responsible for the approval of the TLP main structure. Survey may can however be carried out by the local DNV stations in accordance with the requirements of this Appendix.

Tendon system generally consists of the following main elements:

- tendon pipe
- bottom tendon interface (BTI)
- flex bearings
- foundation
- top tendon interface (TTI)
- tendon intermediate connectors
- tendon tension monitoring system (TTMS)
- tendon porch
- tendon cathodic protection system
- load management program (LMP).

The following international standards and DNV standards are considered acceptable standards for design and fabrication of various components:

- API RP 2T
- API RP 2A
- API RP 2RD
- API RP 2R
- DNV-OS-C101
- DNV-OS-C401
- DNV-OS-B101
- DNV-OS-F101
- DNV-RP-C201/202
- DNV CN 30.4
- DNV-RP-C203
- DNV-RP-B401
- BS 7910
- BS 7448.

B. Equipment categorization

B 100 Requirements to approval procedure

DNV uses categorization in order to clearly identify the certification and approval requirements for different equipment and components.

Categorization of equipment depends on importance for safety and takes operating and environmental conditions into account. Once assigned, the category of equipment refers to the scope of activities required for DNV certification and approval, as consistent with the importance of the equipment.

If there are any other equipment which is not defined in the following tables, categorisation of the same shall be decided on a case by case basis with prior discussion with DNV.

Equipment categorization for offshore installations or units is

as follows:

- I = Equipment/component important for safety and integrity of the TLP and for which a DNV certificate is required.
- II = Equipment/component important for safety and integrity of the TLP and for which a works certificate prepared by the manufacturer is accepted.

Equipment category I

For equipment category I, the following approval procedure shall be followed:

- design approval, documented by a design verification report (DVR) or type approval certificate
- fabrication survey, documented by issue of a product certificate.

Specific requirements:

- pre-production meeting prior to the start of fabrication
- survey during fabrication, as applicable
- witness final functional, pressure and load tests, as applicable
- review of fabrication records.

These requirements are typical and the final extent of DNV survey required will be decided based on:

- complexity, size and previous experience of equipment type
- manufacturer's QA/QC system
- manufacturing survey arrangement (MSA) with DNV
- type of fabrication methods.

Equipment category II

Equipment of category II is normally acceptable on the basis of a works certificate prepared by the manufacturer. As a minimum, the certificate shall contain the following data:

- equipment specification or data sheet
- operating limitation(s) of the equipment
- statement from the manufacturer to confirm that the equipment has been constructed and manufactured according to recognised methods, codes, and standards
- test records as applicable.

Guidance note:

Independent test certificates or reports for the equipment, or approval certificate for manufacturing system, are also acceptable.

---e-n-d---of---G-u-i-d-a-n-c-e---n-o-t-e---

C. Fabrication Record

C 100 General

Fabrication record shall be maintained by the manufacturer in a traceable manner, so that relevant information regarding design specifications, materials, fabrication processes, inspection, heat treatment, testing, etc. can be checked.

Fabrication record for Category I equipment shall be available for review. The following particulars shall be included, as applicable:

- manufacturer's statement of compliance
- reference to design specifications and drawings
- location of materials and indication of respective material certificates
- welding procedure specifications and qualification test records
- location of welding indicating where the particular welding procedures have been used
- heat treatment records
- location of non-destructive testing (NDT) indicating where the particular NDT method has been used and its record
- load, pressure and functional test reports
- as-built part numbers and revisions.

D. Documentation Deliverables for Certification of Equipment

D 100 General

The following documentation will normally be issued by DNV for equipment and systems covered by certification activities (CMC):

a) *Design verification report, (DVR)*

- DVR will be issued by the design approval responsible for all equipment of category I, unless covered by a valid type approval certificate
- in addition to each individual equipment, DVRs shall be issued for each system not covered by plan approval.

The DVR shall contain all information needed to be followed up by the surveyor attending fabrication survey and installation of the equipment, and as a minimum include:

- design codes and standards used for design verification
- design specification (e.g. temperature, pressure, SWL, etc.)
- follow-up comments related to e.g. testing, fabrication and installation of the equipment or system.

An approval letter may be issued instead of a DVR, however such a letter shall as a minimum contain the same information as listed above.

b) *Inspection release note, (IRN)*

- an IRN shall only be issued if the component is delivered prior to issuance of final product certificate (PC). A final PC shall not be issued if there are non-conformances to the equipment or system. The IRN shall be used with detailed description of the non-conformances, and shall always be replaced by a certificate when all non-conformances are closed.

c) *Product certificate, (PC)*

- PC should be issued for all category I equipment or systems
- PC will be issued upon successful completion of design verification, fabrication survey and review of final documentation. As stated above, PC can not be issued if design verification or non-conformances are outstanding.

d) *Survey report*

- survey report shall be issued for all category I equipment or systems upon satisfactory installation, survey and testing onboard. A survey report may cover several systems or equipment installed. The survey report

shall contain clear references to all DVRs and PCs on which the survey report is based, and shall state testing and survey carried out.

E. Tendon Systems and Components

E 100 General

The loads for the tendon component analysis are to be obtained from the tendon global analysis. All relevant requirements as mentioned in Section 1 to Section 8 as applicable for the component shall be followed. The requirements specified below are some additional requirements that are specific to some of the components.

As most of these connectors are complex in design and fabrication, detailed linear elastic Finite Element Analysis (FEA) shall be carried out using industry recognized FE programs. In general, a 3D finite element analysis using solid/brick elements will be required unless a 2D analysis can realistically represent and simulate the connectors, applicable loads and interfaces. Testing will be required where necessary to justify and document the FEA.

The design and construction shall cover all applicable load conditions transportation, lifting, installation and operation etc. The effects of fabrication tolerances, fit-up misalignment etc. shall be included. All connectors must be designed and fabricated with due consideration for installation and removal of damaged tendons.

If the transportation and installation phase of the tendons are not certified by DNV, information shall be submitted to DNV to document the fatigue damage, locked-in stresses etc. resulting from the lifting, transportation, free-standing tendon etc.

A protection shield/hat above the bottom connector may be considered in order to prevent debris entering the bottom connector housing.

A higher safety margin shall be considered for the tendon components than for the tendon pipes due to the complexity of the components and uncertainties in the response calculation.

Guidance note:

In general a Design Fatigue Factor of minimum 10 shall be used for fatigue design of tendon and tendon components provided that the analyses are based on a reliable basis as described above. However, if the fatigue life assessment is associated with a larger uncertainty, a higher Design Fatigue Factor for complex tendon components may be recommended. In such cases, a higher Design Fatigue Factor should be determined based on an assessment of all uncertainties in the fatigue analysis with due consideration to the consequence of a fatigue failure. Before increasing the Design Fatigue Factor one should aim to reduce the uncertainties in the design basis as much as possible.

---e-n-d---of---G-u-i-d-a-n-c-e---n-o-t-e---

E 200 Tendon pipe

Pipe manufacturer shall be an approved manufacturer or shall be certified by DNV. The pipes must be adequately specified for the service conditions. The following as a minimum shall be specified as applicable:

- the pipe shall be formed from Thermo-Mechanically Controlled Process (TMCP) plates
- Submerged Arc Welding (SAW) process shall be used for the pipe manufacturing of the pipes
- the steel shall be fully killed and melted to fine grain practice
- tensile and compression testing shall be performed also in the longitudinal direction
- the variation in yield stress should be limited
- material fracture resistance properties shall be specified
- the impact toughness of base material, weld and Heat-

Affected Zone (HAZ) must be acceptable considering the service temperature

- the hardness of welds must not exceed 330 Brinell's Hardness Number (BHN) and tendons and weld areas must have a high grade coating to prevent hydrogen embrittlement (especially important for high tensile steels)
- NDT should be performed to ensure freedom of imperfections especially transverse to the direction of stress in the weld and
- base material as little variation as possible in wall thickness, diameter and out of roundness to reduce stress concentrations around welds.

Welding shall be performed with low hydrogen welding consumables/processes that give a diffusible hydrogen content of maximum 5 ml/100 g weld metal. Welding procedure qualification for girth welds shall be performed on the actual tendon pipe material and shall include:

- transverse weld tensile testing
- all weld tensile testing
- bend testing
- impact testing of base material, weld, fusion line and fusion line +2 mm
- macro examination and hardness testing
- fracture toughness testing of weld metal and at fusion line.

Adequate acceptance criteria for the service condition and minimum design temperature shall be specified in line with the requirements for tendon pipe.

Repair welding procedures shall be separately qualified on an existing weld and shall include:

- full and half thickness repair
- shallow multipass repairs
- single pass repairs.

Full and half thickness repair welding procedures shall be tested as and meet the same acceptance criteria as the tendon pipe girth welds. Shallow multipass repairs welding procedures shall be tested as and meet the same acceptance criteria as the tendon pipe girth welds except that fracture toughness testing may not be required. Single pass repairs shall be root, face and side bend tested, macro examined and hardness tested and meet the same acceptance criteria as the tendon pipe girth welds.

Guidance note:

Pipe according to DNV-OS-F101, Section 6 with grade designation SAWL xxx I SD will normally meet the required service requirements. Suffix U may be added to enhance uniform tensile properties. Pipe according to API 5L shall be specified with the additional requirements for tendon pipes given above according to TMCP process or equivalent shall be used for the tendon pipes.

---e-n-d---of---G-u-i-d-a-n-c-e---n-o-t-e---

E 300 Bottom tendon interface (BTI)

The bottom tendon interface assembly must provide a secure connection throughout the design life of the TLP. The connector shall be designed adequately against yielding, fatigue and corrosion. BTI normally consist of the following main elements:

- a receptacle which will be welded to the pile
- a bottom tendon connector (BTC) which locks in to the receptacle
- a flex bearing element
- a tendon extension piece that is welded to the tendon pipe.

The maximum angular stiffness of the connection shall be specified consistent with the tendon design. There shall be no disengagement of the load bearing surfaces assuming a minimum tendon tension of "zero" at the bottom tendon interface.

The tendon receptacle and other interfaces attached to the pile shall be subjected to all applicable loads related to pile design and installation.

BTI and flex bearing design shall allow for rotation between the tendon and pile considering all applicable operation and installation conditions. Maximum installation angle shall be specified for the BTC to enter and lock in to the receptacle. Protection shielding shall be considered to prevent debris from entering between tendon and bottom receptacle.

Pile installation loads and applicable impact loads for all components that are relevant during the installation and transportation phase shall be considered in the design

Guidance on fatigue methodology is defined in DNV-RP-C203. If no documented S-N curve exists for the material selected, S-N curves shall be selected from DNV-RP-C203.

Fracture Mechanics tests shall be carried out in accordance with Sec.7.

E 400 Flex bearings

The selected material and manufacturer should have adequate prior experience with successful in-service history to demonstrate adequacy for its intended purpose. If a new material or manufacturer without sufficient prior experience for similar application is selected, the material and manufacturing process shall go through an adequate level of qualification.

Guidance note:

DNV-RP-A203 gives an outline for the qualification procedures.

---e-n-d---of---G-u-i-d-a-n-c-e---n-o-t-e---

Manufacturer shall demonstrate by in-depth analysis and testing that the product meets the specified properties for the flex element including but not limited to:

- specified tendon loads
- maximum rotational stiffness
- minimum axial stiffness
- design life
- internal pressure (if applicable)
- other properties as specified.

Flex bearings shall be tested to adequately characterize rotational stiffness, axial capacity and angular capacity.

Acceptance criteria for the all elements of the finished product shall be clearly specified and agreed before fabrication.

E 500 Foundations

The loading for the foundation (pile or gravity based) design should be obtained from the tendon and geotechnical analysis. The loads resulting from all applicable load conditions including the damaged and removed tendon cases shall be considered.

Foundation design and fabrication shall be carried out in accordance with DNV CN 30.4 or other acceptable standards i.e. API RP 2A and API RP 2T. For gravity based concrete foundations, interface with tendon bottom connector and receptacle is given in DNV-OS-C502. Foundation system shall be designed for the same in-place conditions as the tendon system it supports, including tendon damage cases.

In particular, analysis shall reflect positioning tolerances for installation, installation loads like pile driving and installation and in-place damage. For gravity based structures, settlements (or uplift) needs to be taken into account.

Tendon foundation receptacle and pile above the mudline need to be protected from external corrosion by a combination of coatings and passive cathodic protection systems.

E 600 Top tendon interface (TTI)

The top tendon interface assembly must provide a secure con-

nection throughout the life of the TLP. The connector shall be designed adequately against yielding, fatigue and corrosion. TTI normally consist of the following main elements:

- tendon porch that is attached to the HULL
- the Length Adjustment Joint (LAJ) that will be welded to the top tendon piece
- tendon connector with the flex bearing
- TTMS interface

TTI and flex bearing design shall allow for rotation between the tendon and hull connection considering all applicable operation and installation conditions. Maximum installation angle shall be specified for the Tendon to enter and lock in to the TTI.

Adequate protection (including corrosion) mechanism shall be provided for the TTI to protect the LAJ.

Connector in way of the LAJ shall be checked for strength and fatigue with the reduced cross section.

E 700 Intermediate tendon connectors (ITC)

The intermediate tendon connectors (ITC) must provide a secure connection throughout the life of the TLP. The connector shall be designed adequately against yielding, fatigue and corrosion, racheting and fretting as applicable.

The connectors must be sealed and form a watertight connection. The design shall ensure that all potential damage during handling and installation for the sealing mechanism is identified and designed against.

E 800 Tendon tension monitoring system (TTMS)

Suitable and reliable tendon tension monitoring devices shall be installed to obtain the actual tension during operation.

Guidance note:

Generally, one TTMS unit per corner (a group of tendons) is sufficient.

---e-n-d---of---G-u-i-d-a-n-c-e---n-o-t-e---

This system generally consists of load cells, data acquisition system and alarm system. Load cells shall be calibrated to the required accuracy for the range of tension anticipated accounting for all possible system errors.

Alarm shall be pre-set for the values that exceed the design conditions so that adequate load balancing and operational measures can be taken to ensure that the tendon tension remains within the maximum allowable values. The alarms shall be audible and visually represented in the room where the LMP is monitored.

The load cells and all critical elements of the data acquisition system shall be redundant. There shall be more than one load cell per tendon.

E 900 Tendon porch

HULL interfaces with the tendons including the backup struc-

ture are to be designed for the breaking load of the tendons.

Cast steel shall be a weldable low carbon and fine grained steel. Test coupons representing the greatest end thickness of welding to the HULL shall be developed from each casting to facilitate actual production weld testing qualifications. NDT for the special areas (welding attachment to the HULL) or wherever the stress level (under ULS condition) exceeds 67% of yield shall be subjected to more rigorous NDT than other areas.

Acceptance criteria for weld repairs and acceptability shall be clearly defined in the specifications and agreed upon. Casting shall in general be in accordance with DNV offshore standard DNV-OS-B-101, Ch.2 Sec.4.

E 1000 Tendon corrosion protection system

Tendon assembly shall in general be protected using a combination of coating systems, sacrificial-anodes, material selection, and corrosion allowance considered for the life time of the platform and the inspection philosophy during operation. Special areas like the TTI may need corrosion inhibitors, corrosion cap etc for protecting the moving parts. An effective corrosion protection system shall be in place from the time the structure is initially installed.

Cathodic protection shall be carried out in accordance with DNV Recommended Practice DNV- RP-B401.

Site specific data shall be used for the corrosion protection design. Special considerations shall be given for the higher ambient temperature effect for areas like West Africa.

Anode and other attachment details and welding to the tendon system shall be specifically approved by DNV.

Guidance note:

Design of the corrosion protection system, shall consider the electric continuity between tendon, hull and pile.

---e-n-d---of---G-u-i-d-a-n-c-e---n-o-t-e---

E 1100 Load management program (LMP)

Load management program shall facilitate the safe operation of the TLP and the tendon systems under the defined load conditions by monitoring the weight changes and centre of gravity (CG) shifts compared with the pre-defined envelope. It shall be possible to automatically calculate weight redistribution of live loads and ballast water. Other relevant variable data such as draft, wave, wind etc. shall be used by the program as appropriate.

The system shall operate from a UPS power supply and shall have a redundant fail safe system. Data shall be backed-up continuously and all important data saved on a regular basis.

The load management system shall meet the continuous availability requirement as defined in DNV-OS-D202, Ch.2 Sec.1 B200.

F. Categorisation of Tendon Components

Table F1 Categories for tendon systems, equipment and components			
Relevant text	Material or equipment	DNV approval categories	
		I	II
TENDON PIPE	Pipe	X	
TOP TENDON INTERFACE	TTI Connector	X	
	L AJ Assembly	X	
	Top Flex Bearing	X	
BOTTOM TENDON INTERFACE	BTI Connector	X	
	BTI Receptacle	X	
	BTI Flex Bearing	X	
INTERMEDIATE CONNECTORS	Connectors	X	
FOUNDATION (PILE)	Pile	X	
TENDON TENSION MONITORING SYSTEM	Load Cell	X	
	Hardware and Software	X	X
LOAD MANAGEMENT PROGRAM (LMP)	Hardware and Software	X	
TENDON CATHODIC PROTECTION SYSTEM	Anodes		X
	Attachments		X
FLEX BEARINGS	Reinforcement	X	
	Outer/Inner bulk metal	X	
	Elastomer	X	
TENDON PORCH	Casting	X	

G. Tendon Fabrication

G 100 General

Tendon systems are critical load carrying elements and are essential for the integrity of the TLP. Fabrication of the tendon system in general shall meet the requirements as applicable for “special areas”. NDT requirement on all welding shall, as a minimum, be in accordance with the butt weld requirement for inspection category 1 as defined in DNV Offshore standard DNV-OS-C-401. In all cases, where the global design requires more stringent standards than what is outlined in the DNV

standard, fabrication requirements shall be adjusted such that the tendon joints meet those higher requirements.

The extent and the methods of NDT chosen for the tendon fabrication shall meet the requirements of DNV-OS-C401Sec.3 C105.

Casting, forging techniques used for the tendon fabrication shall, as a minimum, meet the good practices as outlined in DNV-OS-B101 Ch.2 Sec.4 and Ch.2 Sec.3.