

All threaded connections: BSP

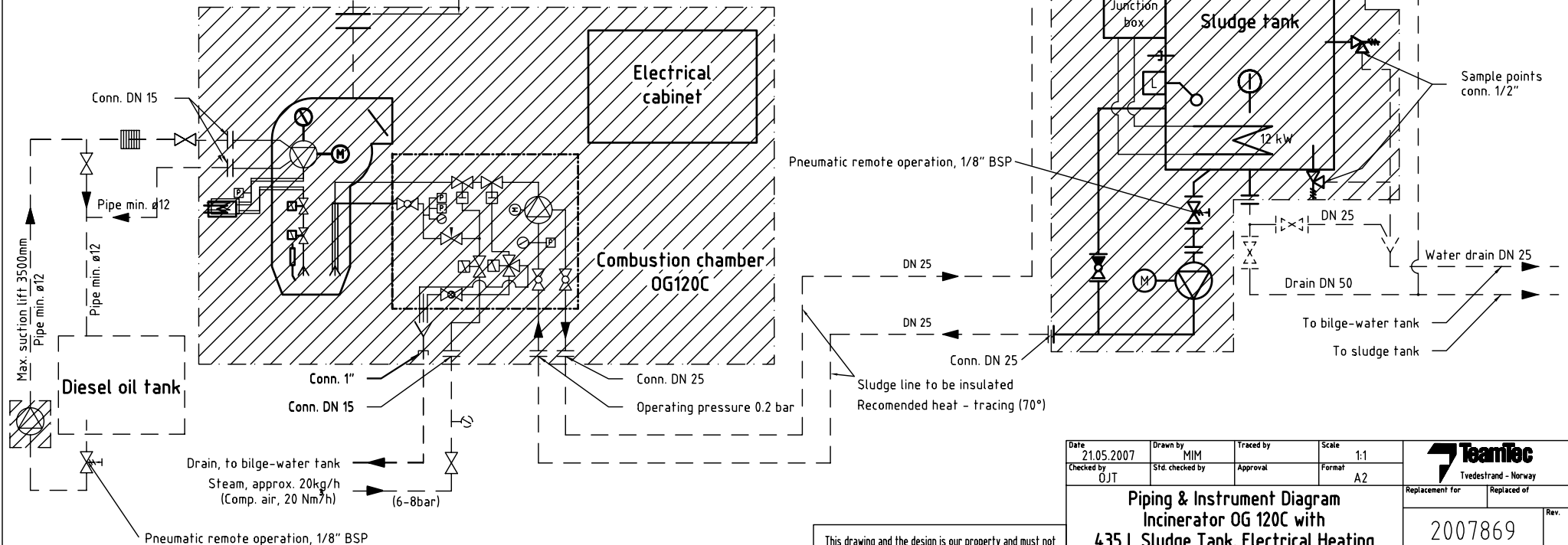
All oil flanges: DIN 2633/2501, pressure class PN10/16

All flanges in flue gas duct drilled according to DIN 2573A

Sludge tank must be insulated! (Operating temp, 80 - 90°C)

TeamTec supply

Yard supply / installation



Date 21.05.2007	Drawn by MIM	Traced by	Scale 1:1	 Tvedestrand - Norway	
Checked by OJT	Std. checked by	Approval	Format A2		
Piping & Instrument Diagram Incinerator OG 120C with 435 L Sludge Tank. Electrical Heating				Replacement for	Replaced of
				2007869	Rev.
Project	Reference	File name 2007869	Plot date	Article no. 2007869	Page -

This drawing and the design is our property and must not be disclosed to any third person without permission.