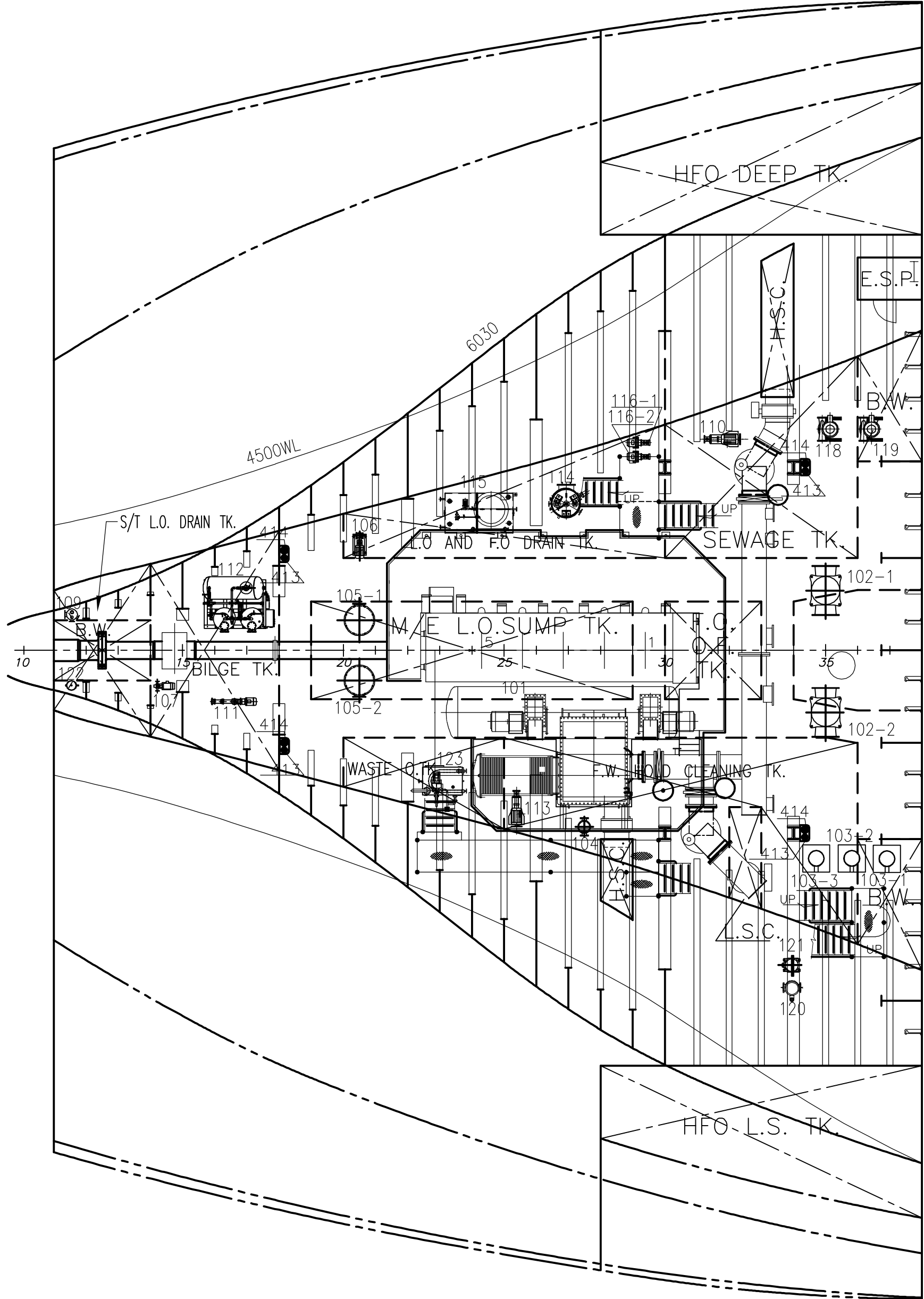


HOLD PLAN



APPROVED FOR CONSTRUCTION
批准施工建造图
Date: 2008/12/12

123	CHEM. CLEAN. TK. 化学清洗柜	HXG0.6-00	NANTONG HULIAN 南通沪联	0.6m ³	
122	AFT. SEAL TK. 艉管后密封滑油柜		Wartsila	25 L	
121	F.O. TRANS. PUMP 燃油输送泵	AHSV-105	NANIWA	30 m ³ /h x 0.35MPa	
120	D.O. TRANS. PUMP 柴油输送泵	AHSV-105	NANIWA	30 m ³ /h x 0.35MPa	
119	FIRE & G.S.P. 消防总用泵	FGV-200 WITH VK-20NB	NANIWA	100/250 m ³ /h x 80/35m	
118	BILGE & G.S.P. 舱底总用泵	FGV-200 WITH VK-20NB	NANIWA	100/250 m ³ /h x 80/35m	
116-2	NO.2 L.O. PURI. FEED PUMP 2号滑油分油机供给泵	KF25 RF 2 D-15	WESTFALIA 韦斯伐里亚	2310 l/h x 20m	
116-1	NO.1 L.O. PURI. FEED PUMP 1号滑油分油机供给泵	KF25 RF 2 D-15	WESTFALIA 韦斯伐里亚	2310 l/h x 20m	
115	STUFF. DRN. UNIT 填料函泄放柜单元	CTXDK-WX0.3	NANTONG HULIAN 南通沪联	0.7m ³ / 0.6m ³	
114	SCAV DRAIN TK. 扫气箱泄放柜	HLXFG-0.4Z-00	NANTONG HULIAN 南通沪联	0.4m ³	
113	SLUDGE PUMP 油渣泵	AE1E 100-ID	NANIWA	5.0 m ³ /h x 0.38MPa	
112	BILGE W. SEPARATOR 舱底水油水分离器	3SEP OWS5.0	JOWA	5.0 m ³ /h	
111	BILGE SEPARATOR PUMP 舱底油水分离器泵		JOWA	5.0m ³ /h x 0.38MPa	
110	SEWAGE TRANSFER PUMP 生活污水输送泵	AE1E 100-ID	NANIWA	5.0m ³ /h x 0.38MPa	
109	FORE SEAL TK. 艉管前密封滑油柜		Wartsila	15 L	
107	S/T L.O. PUMP 艉管滑油泵	TLG-2M	NANIWA	1.1m ³ /h x 50m	
106	L.O. TRANS. PUMP 滑油输送泵	ALG-40N	NANIWA	5.0m ³ /h x 35m	
105-2	NO.2 M/E L.O. PUMP 2号主机滑油泵	TOM-200-2	NANIWA	274.4m ³ /h x 0.5MPa	
105-1	NO.1 M/E L.O. PUMP 1号主机滑油泵	TOM-200-2	NANIWA	274.4m ³ /h x 0.5MPa	
104	SEA PUMP FOR F.W.GEN. 淡水发生装置海水泵	FGV-100	NANIWA	45.0m ³ /h x 45m	
103-3	NO.3 MAIN C.S.W. PUMP 3号主冷却海水泵	FEV-200D	NANIWA	330m ³ /h x 25m	
103-2	NO.2 MAIN C.S.W. PUMP 2号主冷却海水泵	FEV-200D	NANIWA	330m ³ /h x 25m	
103-1	NO.1 MAIN C.S.W. PUMP 1号主冷却海水泵	FEV-200D	NANIWA	330m ³ /h x 25m	
102-2	NO.2 BALLAST PUMP 2号压载水泵	FEW-400D WITH VK-20NB	NANIWA	1200m ³ /h x 25m	
102-1	NO.1 BALLAST PUMP 1号压载水泵	FEW-400D WITH VK-20NB	NANIWA	1200m ³ /h x 25m	
101	MAIN ENGINE 主机	MAN B&W 5S60MC-C	HYUNDAI	SMCR. 8833kW x 105rpm	
NO. 序 号	EQUIPMENT 设备名称	TYPE 型 号	MANUFACTURER 制造商	TECHNICAL REQUIREMENT 技术要求	NOTE 备 注
R2	2008.12.08	REVISED AS ARRANGEMENT		WL	SHENYY
R1	2008.09.28	REVISED AS OWNER COMMENTS		WL	SHENYY
R0	2007.11.10	ISSUED FOR APPROVAL		LSC	SHENYY
REV	DATE	DESCRIPTION		BY	CHKD. APPD.



CS Marine

Web: www.csmarine.net Tel: (86)021-51029058 Fax: (86)021-65341020

CLIENT

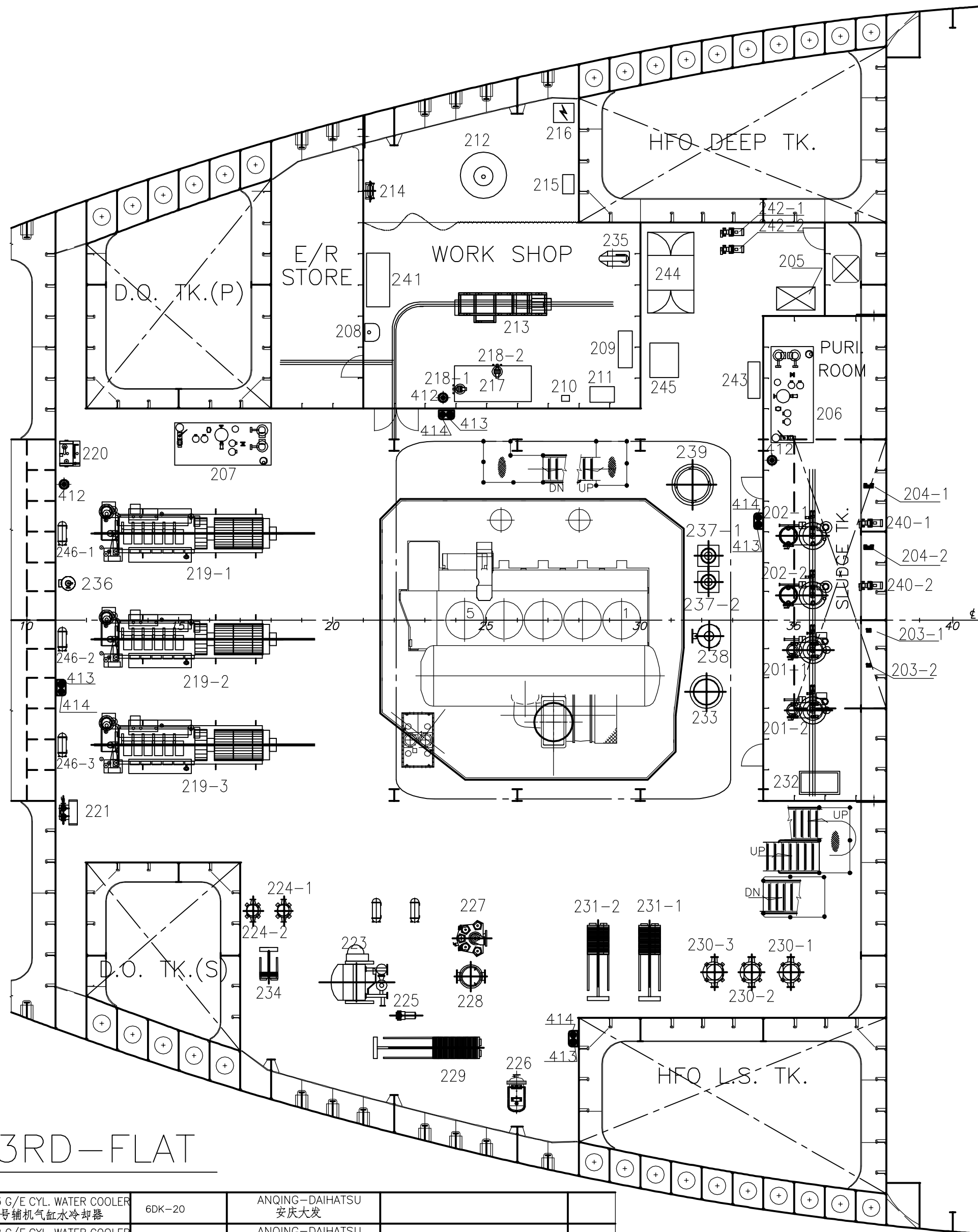
LAVINIA

YARD

Penglai Zhongbai Jinglu Ship Industry Co., Ltd

EF	This drawing is the property of 本 图 为 巴 柏 泰 斯 船 舶 科 技			CS Marine. It is not to be copied or disclosed to any party without prior written consent. (上 海) 有 限 公 司 的 知 识 产 权, 未 经 书 面 同 意 不 得 公 开, 复 制 及 作 其 他 用 途.					
MF	DRAWN	WL	2008.12.08	PROJ NO VCS563D		75200DWT BULK CARRIER		CLASS	BV
HF	CHKD	SHENYY	2008.12.08	TITLE: ENGINE ROOM ARRANGEMENT 机舱布置图					
HC	APPD								
BD		HULL NO. JL0007/08/17/18/21/22		DWG NO M1-4101		REV. R2 SHEET 1 / 8		SCALE 1:100	

APPROVED FOR CONSTRUCTION
批准施工建造图
Date: 2008/12/12

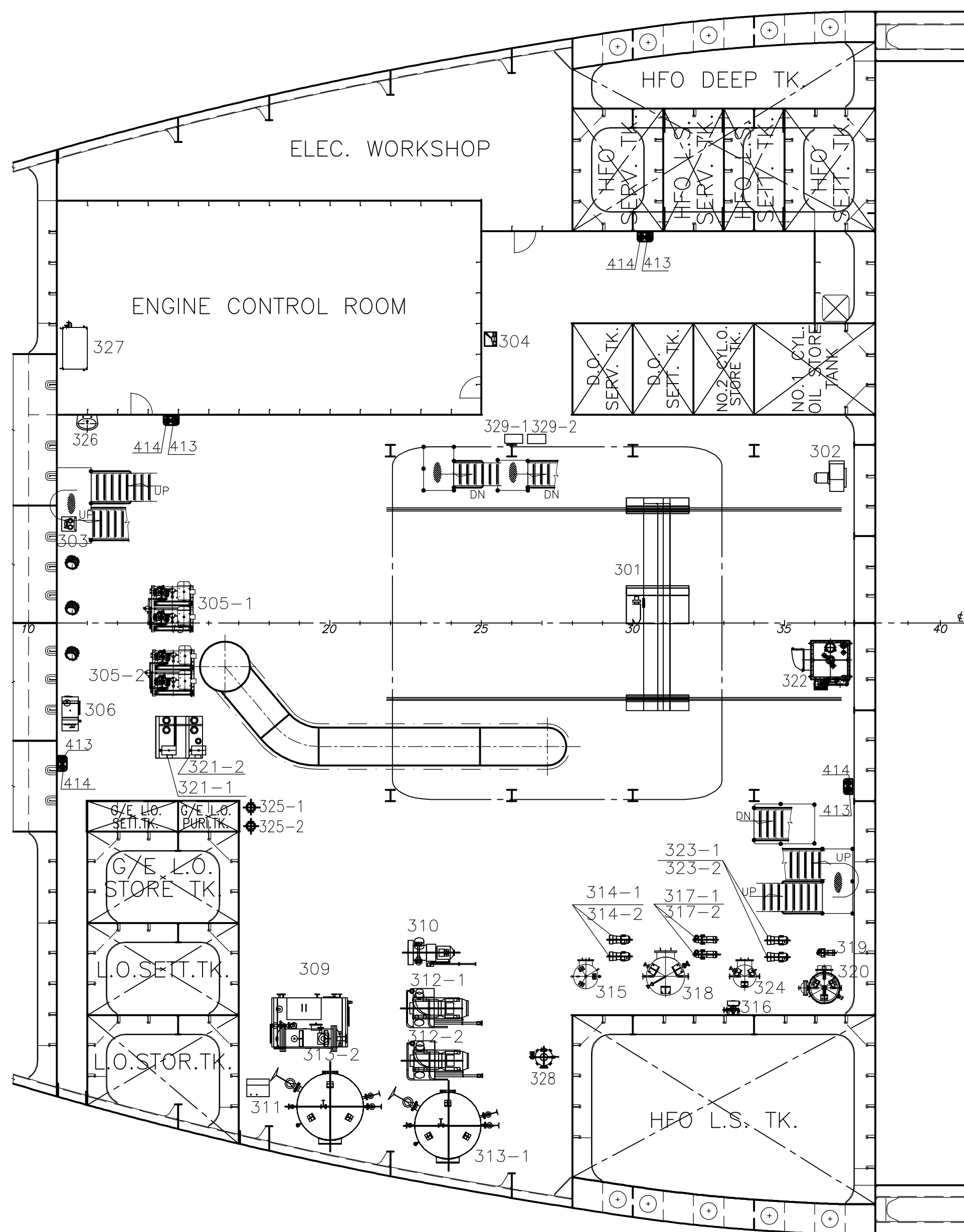


3RD-FLAT

246-3	NO.3 G/E CYL. WATER COOLER 3号辅机缸水冷却器	6DK-20	ANQING-DAIHATSU 安庆大发	
246-2	NO.2 G/E CYL. WATER COOLER 2号辅机缸水冷却器	6DK-20	ANQING-DAIHATSU 安庆大发	
246-1	NO.1 G/E CYL. WATER COOLER 1号辅机缸水冷却器	6DK-20	ANQING-DAIHATSU 安庆大发	
245	HYD. POWER UNIT FOR VALVE REMOTE CONTROL 阀门遥控液压动力单元	HPU150	NORDIC	L*B*H 900*450*1800
244	SOLENOID VALVE & PROCESSING CABINET FOR VALVE REMOTE CONTROL 阀门遥控电磁阀箱	SVC-60	NORDIC	
243	CYL. LUB. OIL BOOSTER UNIT 主机气缸油增压单元	A12-295850-0	HYUNDAI	
242-2	NO.2 CYL. OIL TRANS. PUMP 2号气缸油输送泵	ALG-32N	NANIWA	2m³/h x 0.3MPa
242-1	NO.1 CYL. OIL TRANS. PUMP 1号气缸油输送泵	ALG-32N	NANIWA	2m³/h x 0.3MPa
241	EXH.VALVE GRINDER 排气阀研磨机		HYUNDAI	

240-2	NO.2 F.O.PURI.FEED PUMP 2号燃油分油机供给泵	KF32 RF 2 D-15	WESTFALIA 韦斯伐里亚	2920 l/h x 0.2MPa
240-1	NO.1 F.O.PURI.FEED PUMP 1号燃油分油机供给泵	KF32 RF 2 D-15	WESTFALIA 韦斯伐里亚	2920 l/h x 0.2MPa
239	CYL. COVER 气缸盖		HYUNDAI	
238	PISTON 活塞		HYUNDAI	
237-2	NO.2 EXH.VALVE 2号排气阀		HYUNDAI	
237-1	NO.1 EXH.VALVE 1号排气阀		HYUNDAI	
236	AUX. AIR VESSEL 辅空气瓶	427HL85-0	GREENS SHAZHOU 格林沙洲	0.2m3x3.0MPa

TITLE: ENGINE ROOM ARRANGEMENT		REV.		R2		SHEET 2 / 8	
机舱布置图		VCS563D-M1-4101					
235	DRILLER 钻床	Z3012	NANTONG-HUAMENG 南通华盟	Drilling capacity:13mm			
234	M/E J.W.COOLER 主机缸套水冷却器	HT101M-1P-51	LHE	1350kW			
233	CYLINDER LINER 气缸套		HYUNDAI				
232	PURI.WORKTABLE 净油机工作台		SHIPYARD				
231-2	NO.2 CENTER COOLER 2号中央冷却器	HT202M-1P-179	LHE	4500kW			
231-1	NO.1 CENTER COOLER 1号中央冷却器	HT202M-1P-179	LHE	4500kW			
230-3	NO.3 LOW TEMP.F.W.COOLING PUMP 3号低温淡水冷却泵	FEV-200D	NANIWA	240m³/h x 30m			
230-2	NO.2 LOW TEMP.F.W.COOLING PUMP 2号低温淡水冷却泵	FEV-200D	NANIWA	240m³/h x 30m			
230-1	NO.1 LOW TEMP.F.W.COOLING PUMP 1号低温淡水冷却泵	FEV-200D	NANIWA	240m³/h x 30m			
229	M/E L.O.COOLER 主机滑油冷却器	HT232ML-1P-309	LHE	890kW			
228	L.O. MANUAL FILTER 主机滑油手动滤器	AL840R	AMEROID 康立				
227	L.O.AUTO. BACK FLUSHING FILTER 主机滑油自动反冲滤器	AL840RP	AMEROID 康立	270m³/h X40 um			
226	M/E J.W.ELEC.-STEAM HEATER 主机缸套水预热器	HLJRQ-4.0G-00	NANTONG HULIAN 南通沪联	4m²			
225	M/E HIGH TEMP.F.W.PRE.PUMP 主机高温淡水预热器	BH-50	NANIWA	10m³/h x 15m			
224-2	NO.2 MAIN COOLING F.W.PUMP 2号主机高温冷却淡水泵	FEV-125D	NANIWA	95m³/h x 30m			
224-1	NO.1 MAIN COOLING F.W.PUMP 1号主机高温冷却淡水泵	FEV-125D	NANIWA	95m³/h x 30m			
223	FW GENERATOR 制淡装置	FWG-18	HANSUN 汉盛	18 t/d			
221	G/E F.W.PREHEATER UNIT 发电机淡水预热器单元		ANQING-DAIHATSU 安庆大发				
220	DAILY L.O.TK 零用油柜		SHIPYARD	0.25m³			
219-3	NO.3 GENERATOR 3号主发电机	5DK-20	ANQING-DAIHATSU 安庆大发	560kW.900rpm.450v.ø3 60Hz			
219-2	NO.2 GENERATOR 2号主发电机	5DK-20	ANQING-DAIHATSU 安庆大发	560kW.900rpm.450v.ø3 60Hz			
219-1	NO.1 GENERATOR 1号主发电机	5DK-20	ANQING-DAIHATSU 安庆大发	560kW.900rpm.450v.ø3 60Hz			
218-2	VICE 台钳		SHIPYARD	8"			
218-1	VICE 台钳		SHIPYARD	8"			
217	WORK TABLE 工作台		SHIPYARD				
216	ARC WELDING MACHINE 电焊机		利通海事				
215	GAS WELDING OUTLET STATION 气焊操纵箱		利通海事				
214	GRINDER 砂轮机	M3025	NANTONG-HUAMENG 南通华盟	GRINDING WHEEL 244mm			
213	UNI.MACHINE TOOL 万能车床	QN6004	NANTONG-HUAMENG 南通华盟	MAX.LATHING LENGTH 1000mm			
212	WELDER WORK TABLE 焊接工作台		SHIPYARD				
211	M/E F.O.V.TEST TOOL 主机油头试验台		SHIPYARD				
210	G/E F.O.V.TEST TOOL 发电机油头试验台		SHIPYARD				
209	F.O.V.SHELF 油头架		SHIPYARD				
208	WASH BASIN 洗手盆		SHIPYARD				
207	A/E FEEDER BOOSTER UNIT 辅机供油单元	AMB-Mc-02-SS	AURA 华海	Feeder pump:1.92m³/h*0.4MPa Booster pump:1.77m³/h*0.4/0.8MPa Emergency D.O pump:1.89m³/h*0.8MPa			
206	M/E FEEDER BOOSTER UNIT 主机供油单元	AMB-Mc-07-SS	AURA 华海	Feeder pump:4.09m³/h*0.4MPa Booster pump:5.21m³/h*0.4/1.0MPa			
205	CYL.O.SERV.TK 气缸油日用柜		SHIPYARD	0.6m³			
204-2	NO.2 F.O.PURI.HEATER 2号燃油分油机加热器	B35H/30	WESTFALIA 韦斯伐里亚				
204-1	NO.1 F.O.PURI.HEATER 1号燃油分油机加热器	B35H/30	WESTFALIA 韦斯伐里亚				
203-2	NO.2 L.O.PURI.HEATER 2号滑油分油机加热器	B10H/20	WESTFALIA 韦斯伐里亚				
203-1	NO.1 L.O.PURI.HEATER 1号滑油分油机加热器	B10H/20	WESTFALIA 韦斯伐里亚				
202-2	NO.2 F.O. PURIFIER 2号燃油分油机	OSD 18-0136-067	WESTFALIA 韦斯伐里亚	2795 l/h			
202-1	NO.1 F.O. PURIFIER 1号燃油分油机	OSD 18-0136-067	WESTFALIA 韦斯伐里亚	2795 l/h			
201-2	NO.2 L.O. PURIFIER 2号滑油分油机	OSD 6-91-067	WESTFALIA 韦斯伐里亚	1800 l/h			
201-1	NO.1 L.O. PURIFIER 1号滑油分油机	OSD 6-91-067	WESTFALIA 韦斯伐里亚	1800 l/h			
NO. 序 号	EQUIPMENT 设备名称	TYPE 型 号	MANUFACTURER 制造商	TECHNICAL REQUIREMENT 技术要求		NOTE 备 注	



2ND-FLAT

TITLE:	ENGINE ROOM ARRANGEMENT 机舱布置图	REV.	R2	SHEET 3 / 8
		VCS563D-M1-4101		

APPROVED FOR CONSTRUCTION
批准施工建造图
Date: 2008/12/12

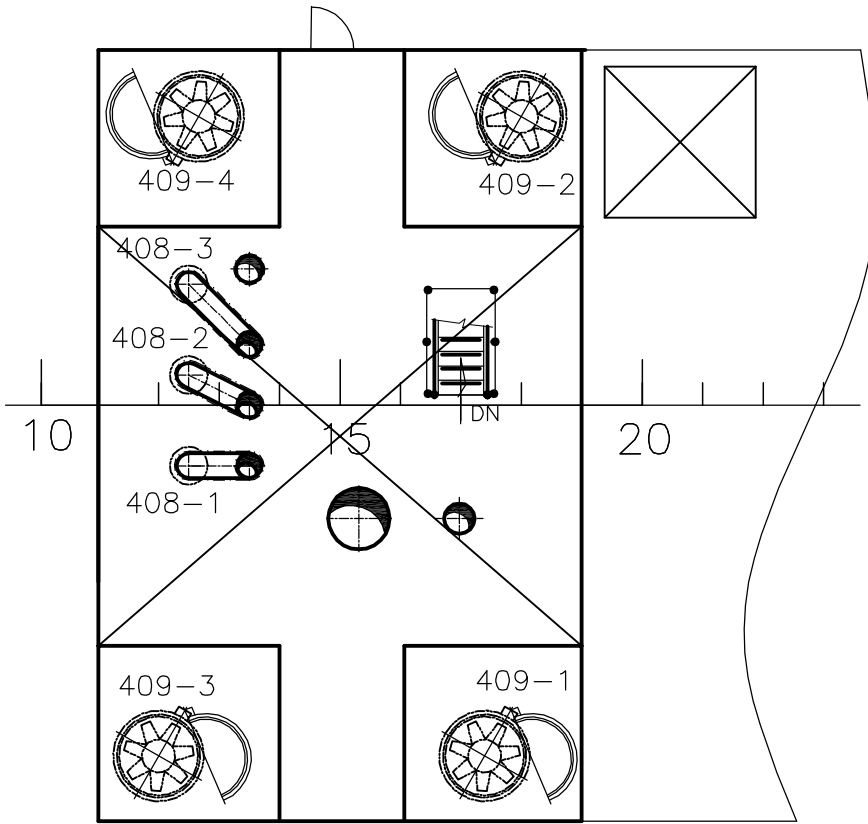
329-2	NO.2 TANK GAUGING CABINET 2号液位测量柜	JL-TGC-01	NORDIC	300x600x1200	
329-1	NO.1 TANK GAUGING CABINET 1号液位测量柜	JL-TGC-01	NORDIC	300x600x1200	
328	DISTILLED WATER HARDENING FILTER 蒸馏水矿化过滤器	FIL-3	HANSUN 汉盛	3m ³ /h x 0.6MPa	
327	AHU for ECR 机舱集控室空调单元	SCU-P5VR	YORK 约克	COOLING CAPACITY 17.4KW	
326	WASH BASIN 洗手盆		SHIPYARD		
325-2	NO.2 BOILER FEED WATER PUMP 2号锅炉给水泵	CR3-13	Greens ShaZhou 格林沙洲	2.5m ³ /h x 109m	
325-1	NO.1 BOILER FEED WATER PUMP 1号锅炉给水泵	CR3-13	Greens ShaZhou 格林沙洲	2.5m ³ /h x 109m	
324	DRINK FW.HY.TK 饮用水压力柜	HLYSG-0.3Y-00	NANTONG HULIAN 南通沪联	0.3m ³	
323-2	NO.2 DRINK F.W.HYD.PUMP 2号饮用水泵	BHR-40	NANIWA	2m ³ /h x 45m	
323-1	NO.1 DRINK F.W.HYD.PUMP 1号饮用水泵	BHR-40	NANIWA	2m ³ /h x 45m	
322	SEWAGE TREATMENT PLANT 污水处理装置	SBT-25	KANGDA 大昆康达	25 PERSON/DAY	
321-2	NO.2 REF.PROV.PLANT 2号制冷机组	SB041-COKZ 160912	YORK 约克	COOLING CAPACITY 7.12KW	
321-1	NO.1 REF.PROV.PLANT 1号制冷机组	SB041-COKZ 160912	YORK 约克	COOLING CAPACITY 7.12KW	
320	CALORIFIER 热水柜	HLZRG-0.5-00	NANTONG HULIAN 南通沪联	0.5m ³	
319	HOT WATER CIRC. PUMP 热水循环泵	FVC-32	NANIWA	2m ³ /h x 10m	
318	DOMESTIC FW.HY.TK 生活水压力柜	HLYSG-1.5D-00	NANTONG HULIAN 南通沪联	2m ³	
317-2	NO.2 DOMESTIC F.W.HYD.PUMP 2号日用淡水泵	BHR-40	NANIWA	5m ³ /h x 50m	
317-1	NO.1 DOMESTIC F.W.HYD.PUMP 1号日用淡水泵	BHR-40	NANIWA	5m ³ /h x 50m	
316	UV STERILIZER 紫外线消毒器	UIV-4.0	HANSUN 汉盛	4m ³ /h	
315	DISTILLED W.HY.TK 蒸馏水压力柜	YSG03-00	NANTONG HULIAN 南通沪联	0.3m ³	
314-2	NO.2 DISTILLED W.HYD.PUMP 2号蒸馏水泵	BHR-40	NANIWA	2m ³ /h x 45m	
314-1	NO.1 DISTILLED W.HYD.PUMP 1号蒸馏水泵	BHR-40	NANIWA	2m ³ /h x 45m	
313-2	NO.2 MAIN AIR VESSEL 2号主空气瓶	427HL312-0	GREENS SHAZHOU 格林沙洲	6m ³ x 3.0MPa	
313-1	NO.1 MAIN AIR VESSEL 1号主空气瓶	427HL312-0	GREENS SHAZHOU 格林沙洲	6m ³ x 3.0MPa	
312-2	NO.2 MAIN AIR COMPRESSOR 2号主空压机	H-74	TANABE	200m ³ /h x 3.0MPa	
312-1	NO.1 MAIN AIR COMPRESSOR 1号主空压机	H-74	TANABE	200m ³ /h x 3.0MPa	
311	CONTROL AIR DEHUMIDIFIER 控制空气除湿器	SDO125AP	DANHUA 丹华	50m ³ /h x 0.7MPa	
310	EMERGENCY AIR COMPRESSOR 辅空压机	VLH-53	TANABE	60m ³ /h x 3.0MPa	
309	CASCADE UNIT 热井	GLGS-2000	NANTONG HULIAN 南通沪联	2m ³	
306	S/T GRAVITY TK 艏管重力油柜		SHIPYARD	0.3m ³	
305-2	NO.2 A/C COMP. & COND. UNIT 2号空调压缩冷凝机组	4G2Y-CRKC 272366	YORK 约克	COOLING CAPACITY 100KW	
305-1	NO.1 A/C COMP. & COND. UNIT 1号空调压缩冷凝机组	4G2Y-CRKC 272366	YORK 约克	COOLING CAPACITY 100KW	
304	WATER DISPENSER 饮水器		SHIPYARD		
303	BOILER FUEL OIL PUMP 锅炉燃油泵		GREENS SHAZHOU 格林沙洲		
302	PURI. RM EXH.FAN 净油机室排风机	JCZ-32	SHANGHAI HENGYUAN 上海亨远	6000 m ³ /h x 705Pa	
301	E/R CRANE 机舱行车	DCB No. 07-7760	YONGXIN 永昕	SWL 5000kg	
NO. 序号	EQUIPMENT 设备名称	TYPE 型号	MANUFACTURER 制造商	TECHNICAL REQUIREMENT 技术要求	NOTE 备注

APPROVED FOR CONSTRUCTION

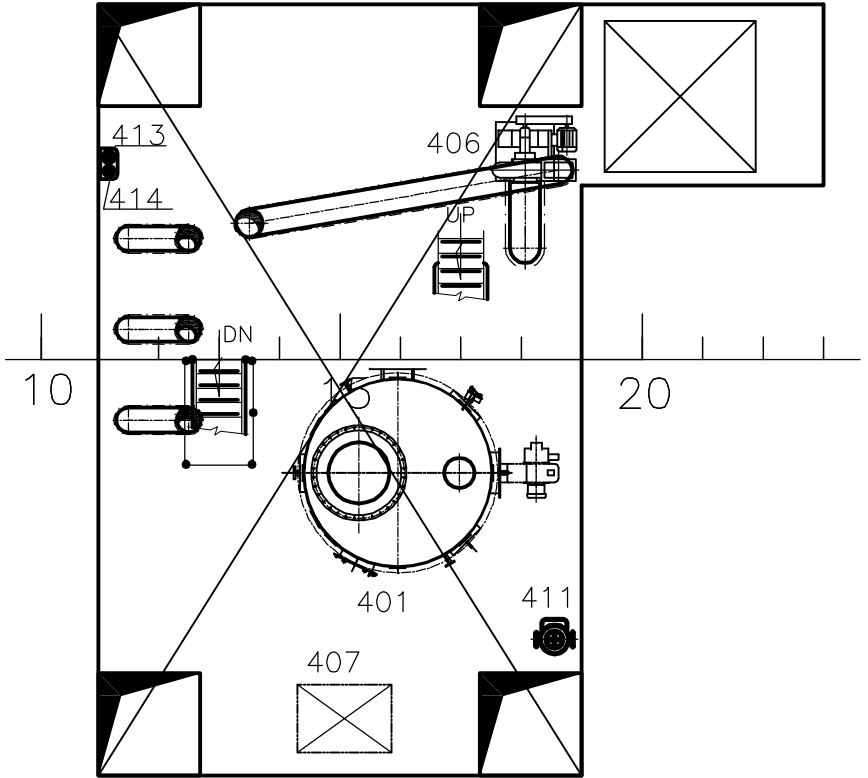
批准施工建造图

Date: 2008/12/12

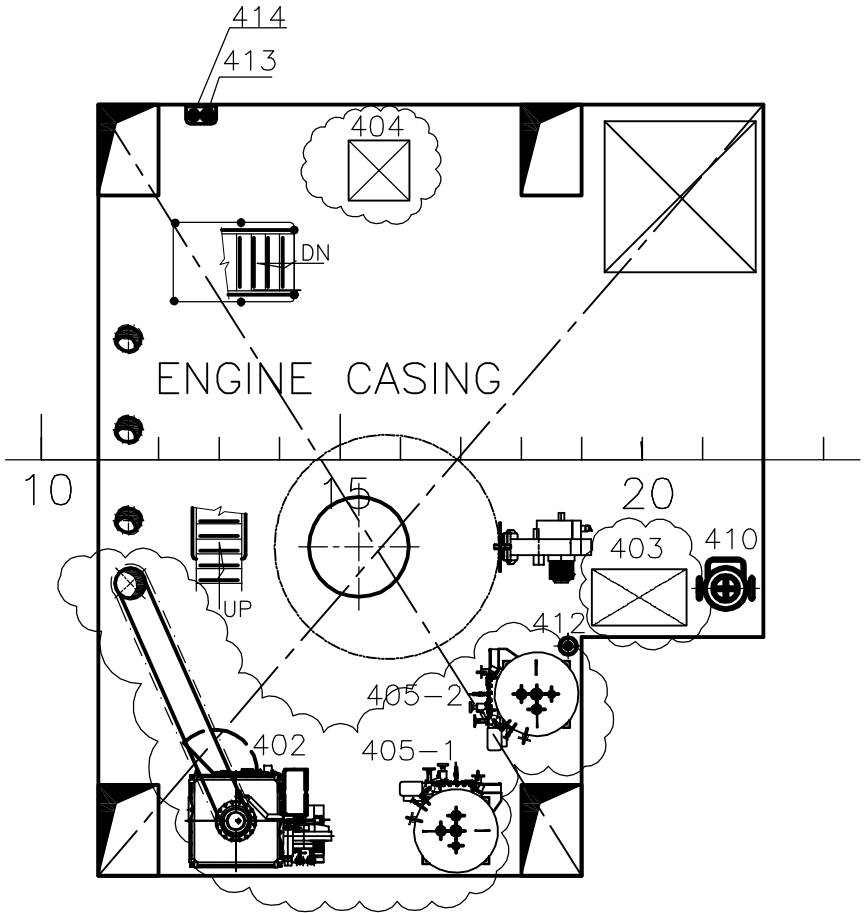
B-DECK



A-DECK

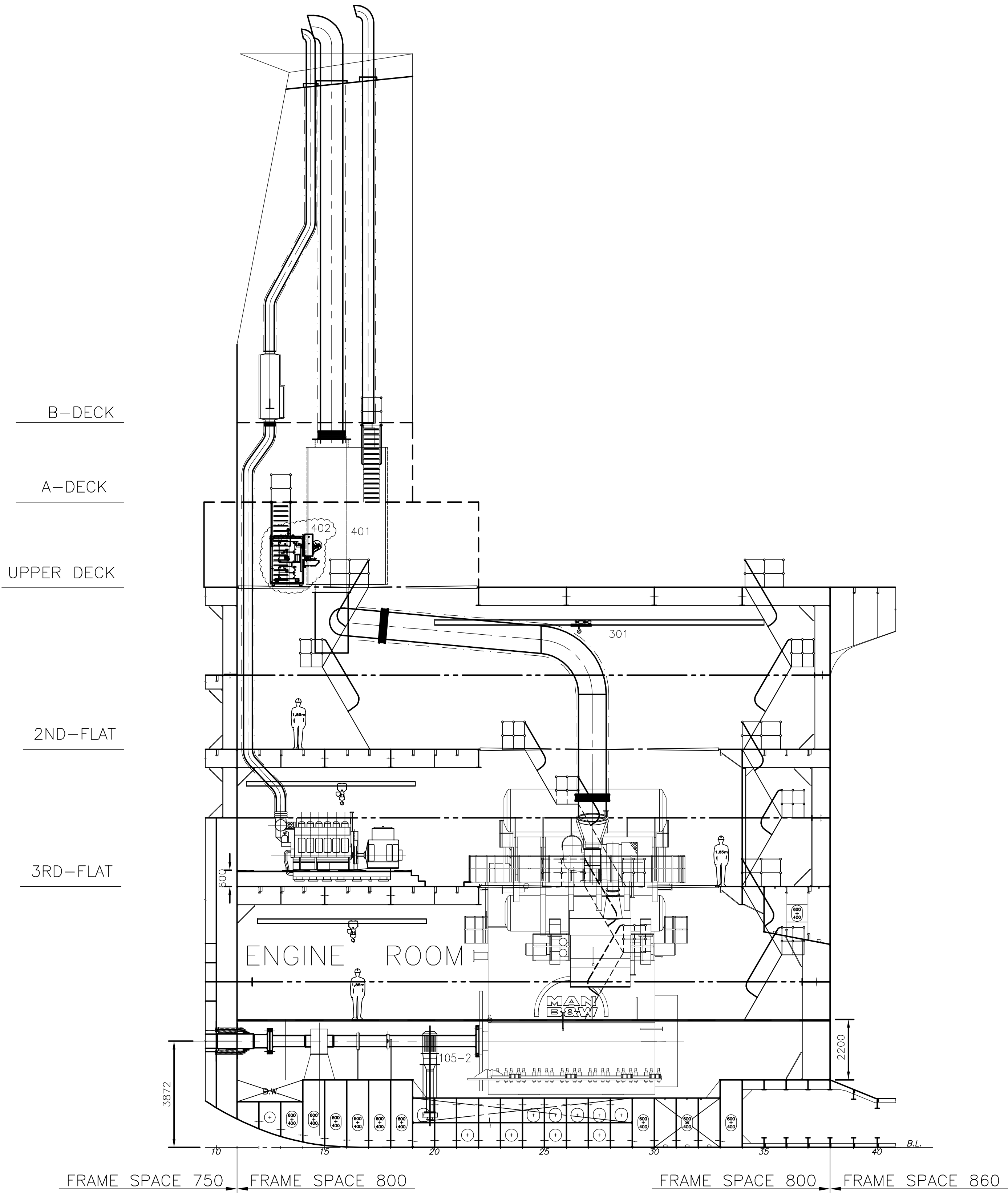


UPPER DECK



414	PORTABLE CO2 FIRE EXTINGUISHER 便携式CO2灭火器	PORTABLE TYPE		9kgX14	WITH BRACKET 配支架
413	PORTABLE FOAM FIRE EXTINGUISHER 便携式泡沫灭火器	PORTABLE TYPE		9LX14	WITH BRACKET 配支架
412	PORTABLE FOAM APPLICATOR UNIT 便携式泡沫施放装置	PORTABLE TYPE		20LX4	
411	PORTABLE FOAM FIRE EXTINGUISHER 推车式泡沫灭火器	TROLLY TYPE		45L	
410	PORTABLE FOAM FIRE EXTINGUISHER 推车式泡沫灭火器	TROLLY TYPE		135L	
409-4	VENT FAN IN E/R 4 机舱风机4	JCZ-90B	SHANGHAI HENGYUAN 上海亨远	40000 m³/h x 705Pa	
409-3	VENT FAN IN E/R 3 机舱风机3	JCZ-90B	SHANGHAI HENGYUAN 上海亨远	40000 m³/h x 705Pa	REVERSIBLE 可逆
409-2	VENT FAN IN E/R 2 机舱风机2	JCZ-90B	SHANGHAI HENGYUAN 上海亨远	40000 m³/h x 705Pa	REVERSIBLE 可逆
409-1	VENT FAN IN E/R 1 机舱风机1	JCZ-90B	SHANGHAI HENGYUAN 上海亨远	40000 m³/h x 705Pa	
408-3	G/E EXH.SILENCER 3 发电机消音器3	DS454-300	JINGJIANG JIANGHAI 靖江江海	25dB	
408-2	G/E EXH.SILENCER 2 发电机消音器2	DS454-300	JINGJIANG JIANGHAI 靖江江海	25dB	
408-1	G/E EXH.SILENCER 1 发电机消音器1	DS454-300	JINGJIANG JIANGHAI 靖江江海	25dB	
407	EXP.W.TK.FOR L.T.F.W. 低温淡水膨胀水箱		SHIPYARD	1.5m³	
406	FLUE GAS FAN 焚烧炉烟气风机	DN350	HANSUN 汉盛	9500 m³/h	
405-2	NO.2 INCINERATOR SLUDGE TANK 2号焚烧炉废油柜		HANSUN 汉盛	1.0m³	
405-1	NO.1 INCINERATOR SLUDGE TANK 1号焚烧炉废油柜		HANSUN 汉盛	1.0m³	
404	INCINERATOR D.O. TANK 焚烧炉柴油柜		SHIPYARD	1.0m³	
403	EXP.W.TK.FOR M/E 主机膨胀水箱		SHIPYARD	1.0m³	
402	INCINERATOR 焚烧炉	HSINC-50	HANSUN 汉盛	MAX.CAPACITY: 580kW	
401	COMPOSITE BOILER 组合锅炉	ZYC1.5/347-0.7	GREENS SHAZHOU 格林沙洲	1.5t/h(oil fire part) 1.2t/h(exhaust gas part)	
NO. 序 号	EQUIPMENT 设备名称	TYPE 型 号	MANUFACTURER 制造商	TECHNICAL REQUIREMENT 技术要求	NOTE 备 注

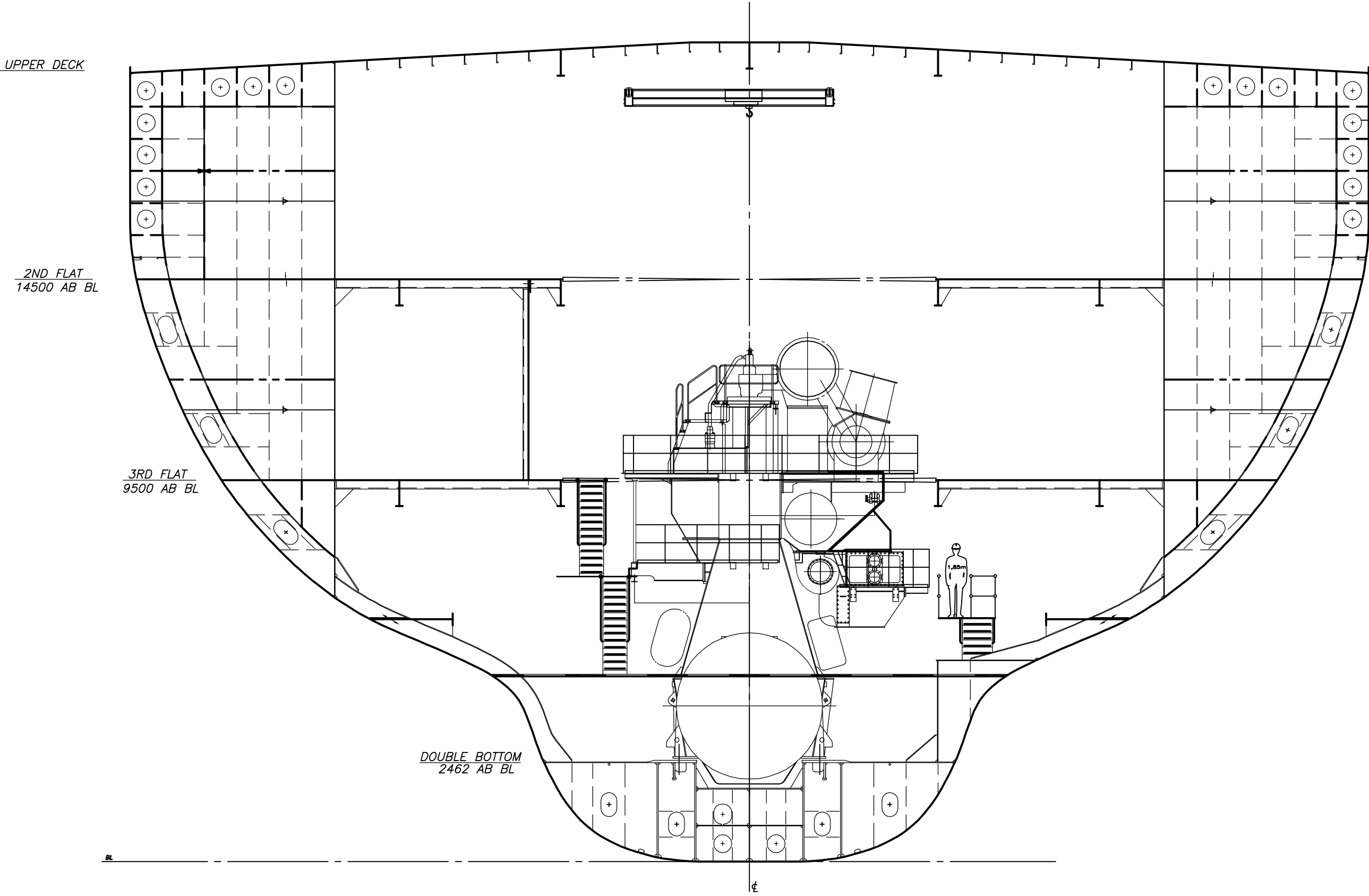
APPROVED FOR CONSTRUCTION
批准施工建造图
Date: 2008/12/12



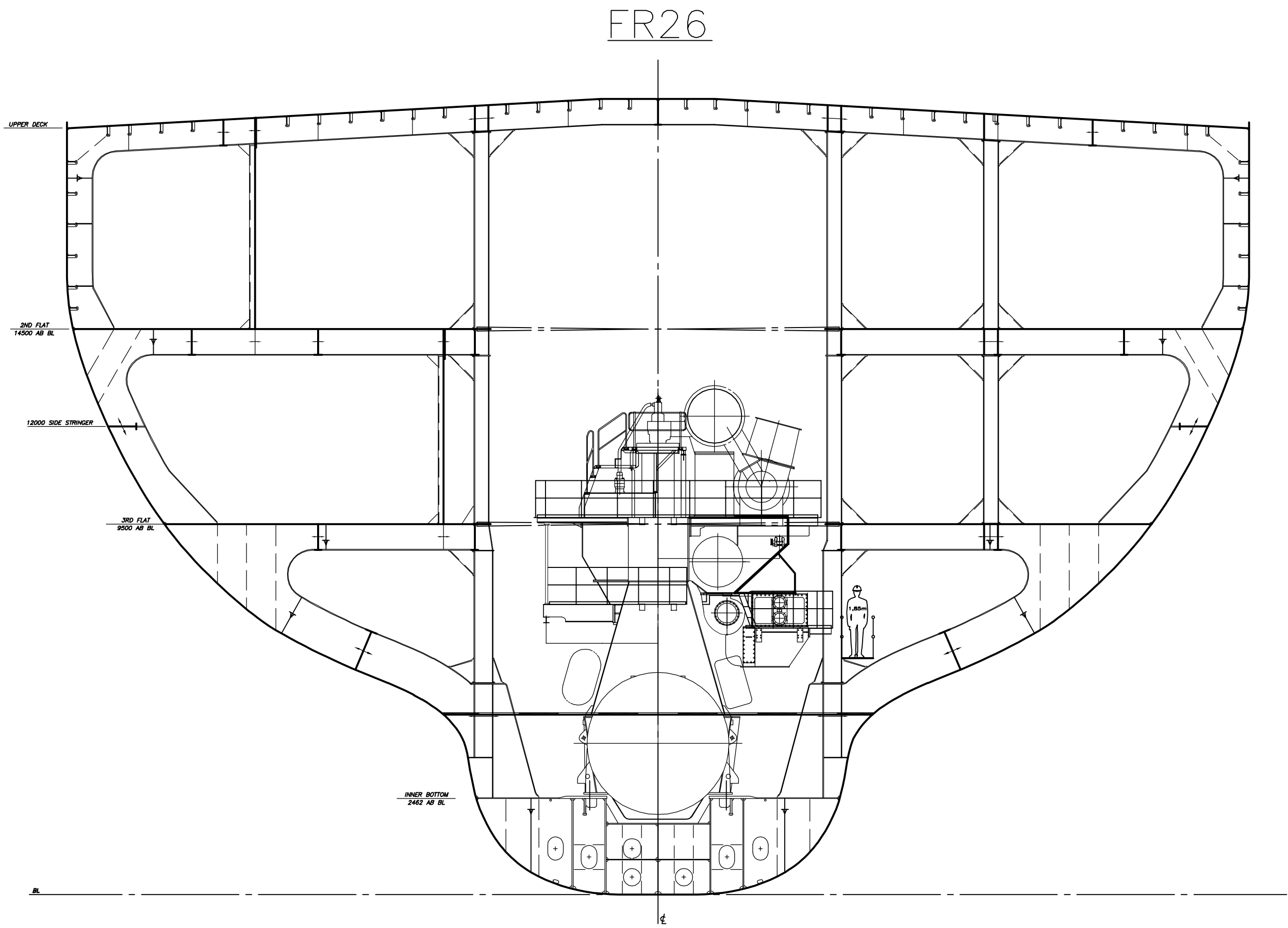
PROFILE

APPROVED FOR CONSTRUCTION
批准施工建造图
Date: 2008/12/12

FR28



APPROVED FOR CONSTRUCTION
批准施工建造图
Date: 2008/12/12



APPROVED FOR CONSTRUCTION
批准施工建造图
Date: 2008/12/12

