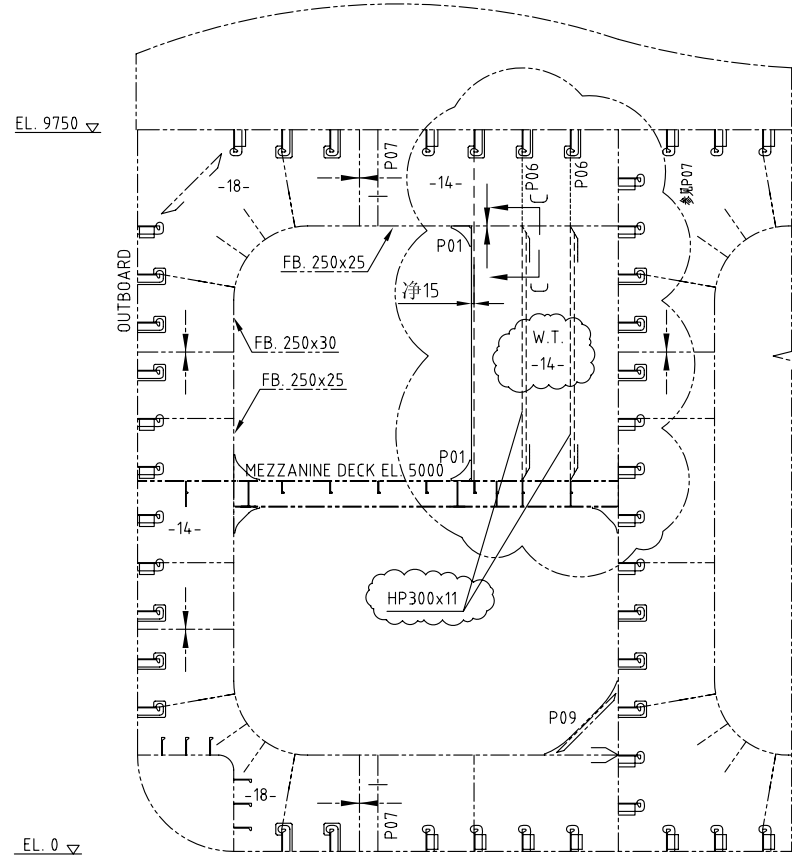
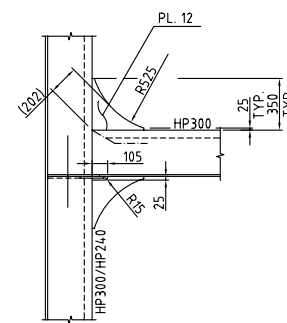
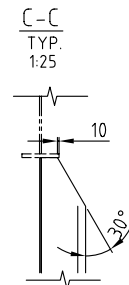
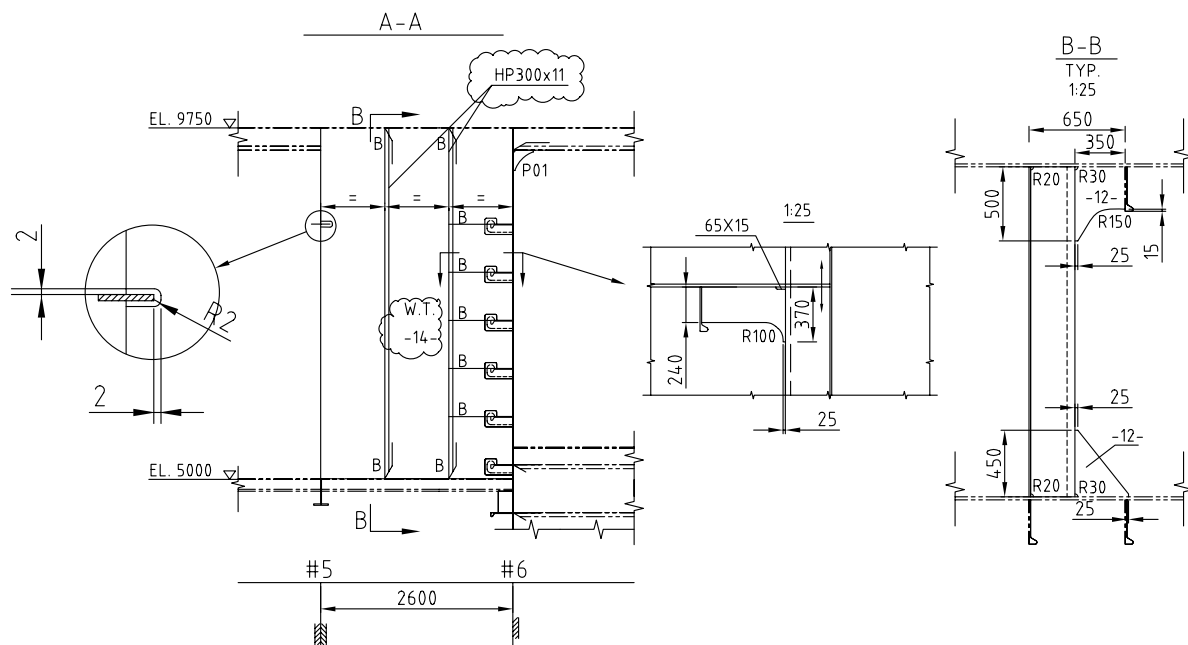


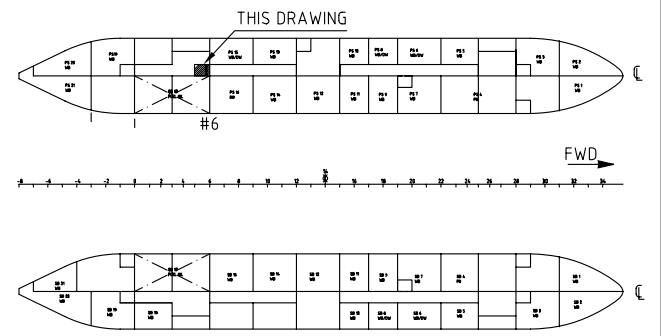
PART PLAN AT TOP OF PORT PONTON



WEB FRAME
FRAME: #5
ALL STRINGERS HP300X11



TYPICAL BRACKET P01



KEY PLAN

NOTES:

1. STRUCTURES ARE MODIFIED FOR CABLE TRUNK .
FOR GENERAL NOTES REF. 910-003-N-211-XG-001.
FOR PENETRATION ARRANGEMENT, SEE DRG. NO.: 910-003-N-212-XS-005 TO 007.
2. MATERIAL TO BE OF NVD36 QUALITY.
3. ALL THE SIZE OF FILLET WELDS TO BE $\frac{6}{6}$.
4. THE CABLE TRUNK TO BE WATERTIGHT.

 CLOUDS INDICATE MODIFICATIONS
BASED ON SITE DNV'S COMMENT

108-082-N-212-XG-005, TRANSVERSE FRAMES AND BULKHEADS


108-082-N-212-XG-001, TRANSVERSE FRAMES AND BULKHEADS

108-082-N-211-XG-001, TOP AND BOTTOM SHELL

108-082-N-213-XG-001, MEZZANINE DECK PONTOON

TCN119P-082-N-212-XS-001 TO 003, DETAILS

REFERENCE DRAWINGS

2008-07-14	0	工作图	For Construction	HQ	LXL	LGM
2008-03-18	A	送审图	For Approval			
日期 Date	版本 Version	说明 Description		修改 Modify	校对 Check	审核 Review
承建者 Builder	舟山中远船务工程有限公司 COSCO (ZHOU SHAN) SHIPYARD CO.,LTD		工程号 Proj.No	ZS07007		
业主 Owner	MARINE ACCURATE WELL ASA		船级 Class	DNV	详细设计 Detail Design	
工程名 P.Name	GM4000 半潜式钻井平台 GM4000 SEMI-SUBMERSIBLE HULL UNIT		图号 Draw.No	TCN119-123-001		
左浮体内电缆通道图 CABLE TRUNK STRUCTURES OF PORT PONTOON			设计 Design	批准 Approve		
			校核 Check			
 中远船务工程集团有限公司技术中心 COSCO SHIPYARD GROUP CO.,LTD TECHNICAL CENTER				比例 Scale	1:50	
				页数 Sheet	1/1	