

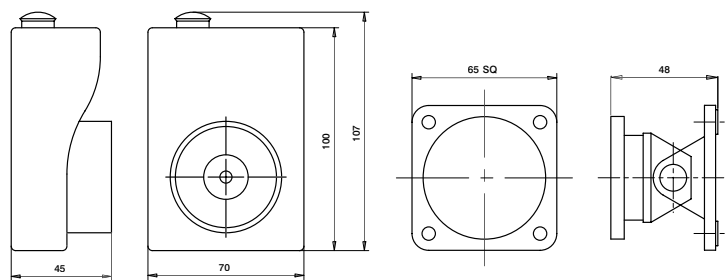
# ✱ magnetic door release



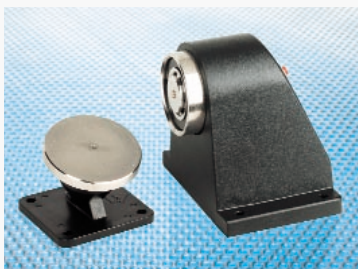
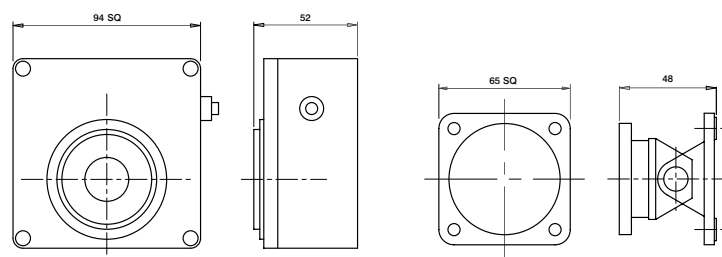
- 24Vdc & 240Vac VERSIONS AVAILABLE
- RETAINING FORCES FROM 25Kgf to 100Kgf
- SPRING EJECTOR
- PUSH BUTTON RELEASE
- FORMATS FOR WALL OR FLOOR MOUNTING
- ARTICULATED DOOR PLATE SUPPLIED WITH EACH UNIT

Model	Wall Mounted (Metal Enclosure)			Wall Mounted (Plastic Enclosure)				Floor	Universal
Order code-FSMD	024/40/W	024/100/W	240/40/W	024/25/PW/*	024/50/PW/*	240/25/PW/*	240/50/PW/*	024/50/FL	024/100/UA/30
Mounting	Wall	Wall	Wall	Wall	Wall	Wall	Wall	Floor	Both (300mm arm)
Nominal Voltage	24Vdc	240Vdc	230Vac	24Vdc	24Vdc	230Vac	230Vac	24Vdc	24Vdc
Nominal Current	75mA	100mA	9mA / 2W	20mA	40mA	5mA / 1W	7mA / 1.6W	75mA	100mA
Circuit Configuration	Solenoid	Solenoid	Solenoid	Solenoid diode polarised & suppressed	Solenoid diode polarised & suppressed	Solenoid	Solenoid	Solenoid	Solenoid
Holding Force	40Kgf / 390N	100Kgf / 980N	40Kgf / 390N	25Kgf / 245N	50Kgf / 490N	25Kgf / 245N	45Kgf / 440N	50Kgf / 490N	100Kgf / 980N
Connections	Screw terminals	Screw terminals	Screw terminals	Screw terminals	Screw terminals	Screw terminals	Screw terminals	Flying leads	Flying leads
Housing	Di-cast aluminium box with plastic cover			Plastic base and cover				Aluminium	Aluminium & Steel
Protection	IP42	IP42	IP42	IP42	IP42	IP42	IP42	IP42	IP42
Manual Release	Yes	Yes	Yes	Yes	Yes	Yes	Yes	Yes	Yes
Temperature	-10° to +40°C	-10° to +40°C	-10° to +40°C	-10° to +40°C	-10° to +40°C	-10° to +40°C	-10° to +40°C	-10° to +40°C	-10° to +40°C
Dimensions	See illustrations overleaf								
Weight	0.84Kg	0.93Kg	0.93Kg	0.43Kg	0.50Kg	0.43Kg	0.50Kg	0.90Kg	1.8Kg
Colour	White box, Black facia			*White (RAL 9010) or Black (RAL 9017)				Black	Black
Accessories	Bracket for floor mounting								
Dimensions	See illustrations overleaf								
Colour	White								
Weight	0.44Kg								

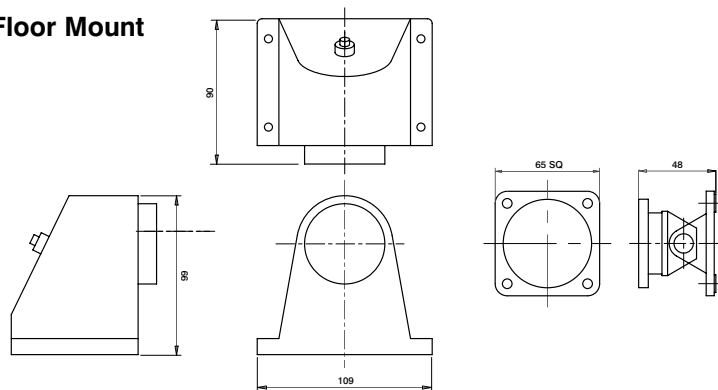
## PW Wall Mount



## Wall Mount



## Floor Mount



## Arm Mount

