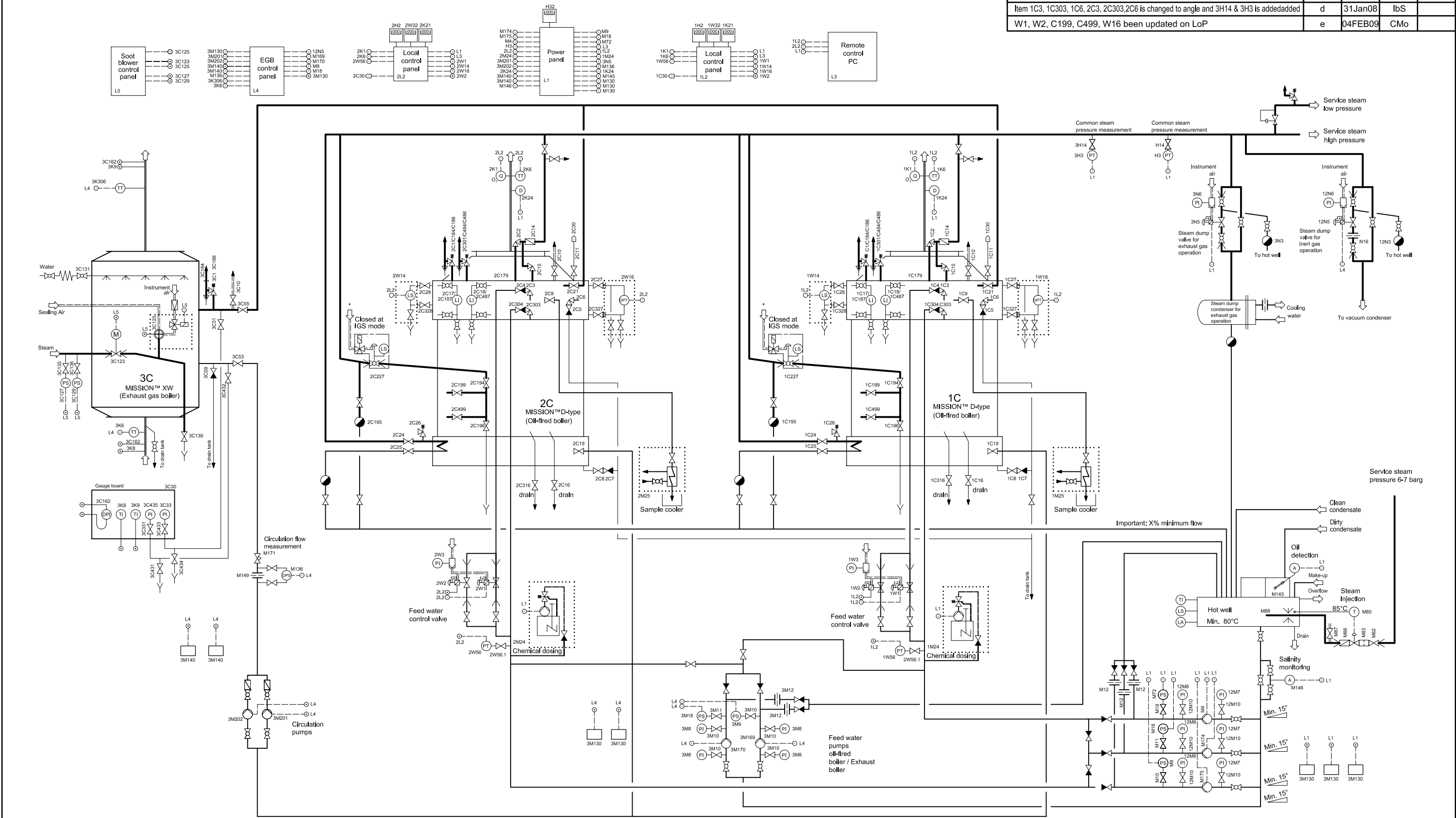


Description	Index	Date	Drawn	Appr.
Internal revision	a	31JAN07	PEA	YWa
Internal revision	b	29Apr07	lbS	SOK
Item 1W56 & 2W56 added	c	29Apr07	lbS	SOK
Item 1C3, 1C303, 1C6, 2C3, 2C303,2C6 is changed to angle and 3H14 & 3H3 is added	d	31Jan08	lbS	
W1, W2, C199, C499, W16 been updated on LoP	e	04FEB09	CMo	



Signatures:	External wiring	Check valve
Steam	Capillary tube	Globe stop valve
Water	On page	Gate valve
Chemicals	Off page	Globe stop valve (SDNR)
Air	Reducer	Ball valve
Blow down/drain lines	Open drain	Steam trap
Oil		
Exhaust/ flue gas		
Pre-assembled unit		

NOTE:  
- The indicated tag nos. are for reference to part list only.  
- Scope of supply is stated in the separate List of parts.  
- Components: see separate List of parts.  
- For electrical connections, see actual electrical wiring diagrams.  
- Principal diagram only.

RQ No.	RQ100113		CF No.	CF35		
Customer	CSSC Guangzhou Longxue Shipbuilding Co., Ltd					
Society	DNV + CCS	DNV + CCS	DNV + CCS	DNV + CCS	DNV + CCS	DNV + CCS
Newb. No.	L0001	L0001	L0002	L0002	L0003	L0003
Project No.	100113-01-1	100113-01-2	100113-02-1	100113-02-2	100113-03-1	100113-03-2
Boiler No.	18810	18818	18812	18819	18814	18820
Boiler No.	18811		18813		18815	
Project No.	100113-04-1	100113-04-2				
Boiler No.	18816	18821				
Boiler No.	18817					



Title:  
**P & ID, Steam/ water system**  
**2 x MISSION™ D-type + 1 x MISSION™ XW**  
**Single service steam line**

THIS DRAWING AND DESIGN SHOWN HEREIN IS THE PROPERTY OF AALBORG INDUSTRIES  
AND MUST NOT BE USED BY OR REPRODUCED FOR THIRD PARTY

Drawn	PEA	Date	31/01/2007
Appr.	YWa	Date	31/01/2007
Weight		Scale:	-
Article/Drawing No:	X01 : 045225		
Index	e		