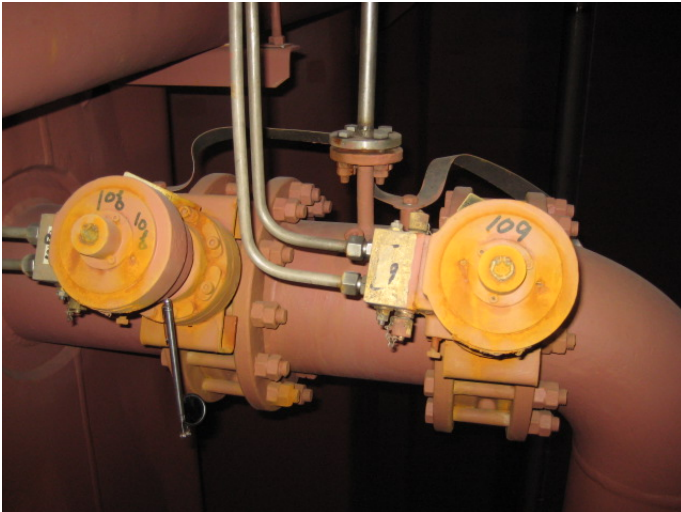
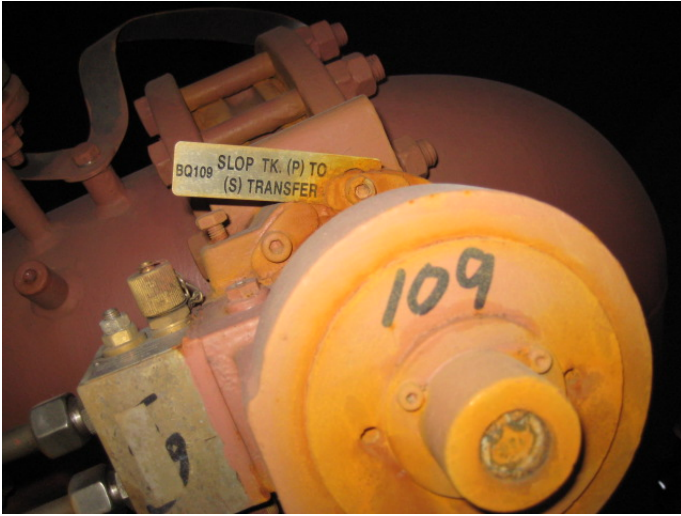


cargo hold painting requirements & comments

Slop Tank



1: 对于厂家来货的阀门, 要求不锈钢液压管和顶部转轴及批示针盘进行妥善包覆盖保护, 不进行冲砂和油漆. 但其它表面进行扫砂和油漆

For the valve, require to no blasting and painting for the stainless hydraulic pipe and axes with the indicating disc, please protect it. Other surface to be sweep blasting and painting.



2: 如果错误的材料 U 型螺栓,必须进行更换至正确材料. 同时对不锈钢套节,电焊及打磨后在适当的时期进行钝化. 钝化处理要求由油漆部门按照相关工艺进行, 避免其他工种不小心的施工导致钝化液滴在油漆表面,损坏油漆质量.

The wrong material U kind bolts, must be changed to correct material. For the stainless sleeve, after welding, it should be passivated. The passivation to be carried out by painting department painter according concerned workmanship, in order to avoid any passivation liquid drop to damage coat by careless.

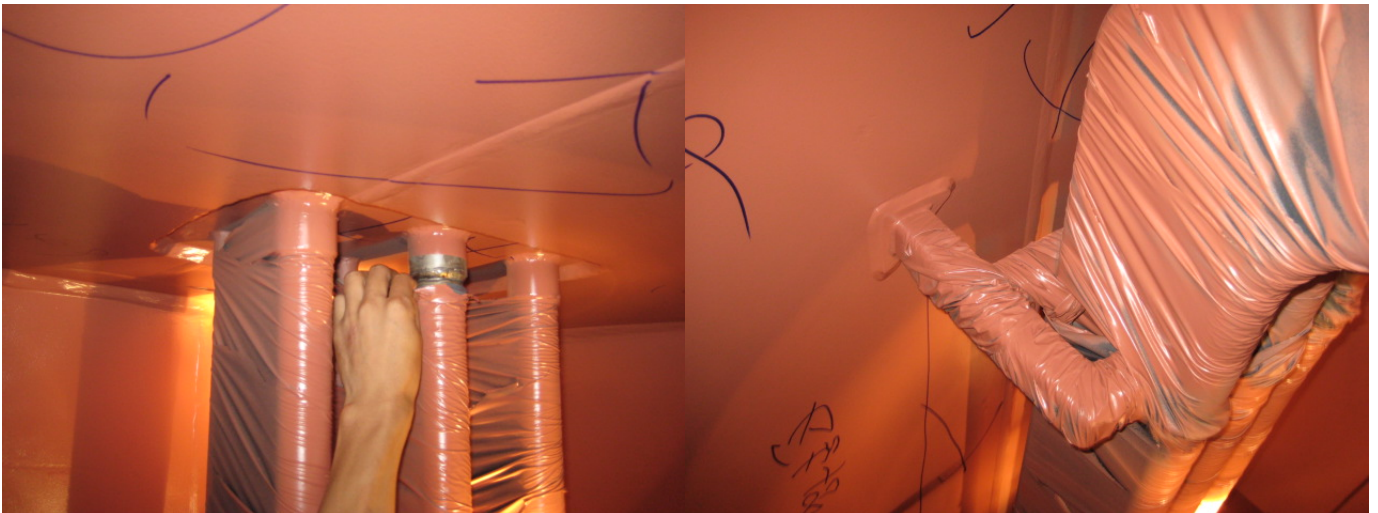
B1, 2008-04-22, Residul Tank



3: 错误材料的半圆形吊耳,必须更换至正确的材料

The wrong material of hinge half ring must be renew to correct material.

其它部分注意项 Others for reminding

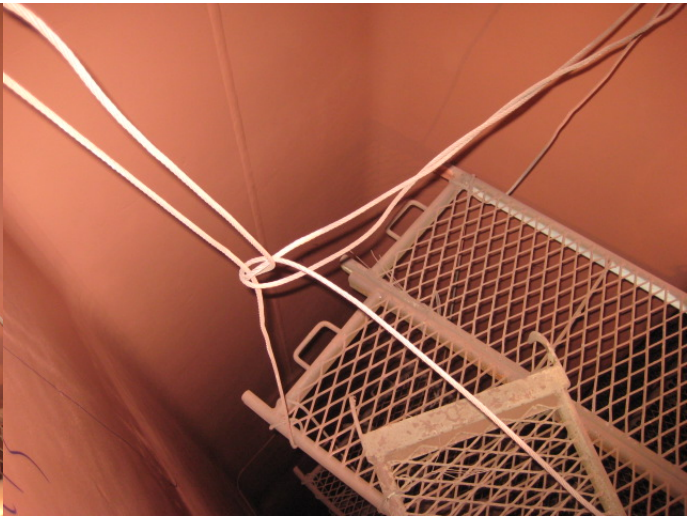


4: 包扎至露出套节的焊缝

The cover boundary to expose the welding seam of sleeve



- 5: 不允许在加热管上留下胶带或是油漆
The tape or paint on the heating coil is unacceptable



- 6: 在槽型舱壁处的脚手架,有些太低,油漆工不够高,不利于反顶的打砂皮纸的 DFT 检查. 并且空间宽度太大,不安全
the stage in the corrugated bulkhead to be set a lit bit up, because it is down, the painter is not enough tall to reach the ceiling to do such as hand paper grind and DFT check. And the space too big, dangerous.



