



9.0 ACCESS FOR PHYSICALLY DISABLED EMPLOYEES

9.1 SECTION CONTENTS

This section provides guidance for the design of facilities for wheel-chair access. Such facilities normally require an occupancy permit.

These facilities should be considered as part of construction of new buildings or planned remodeling of existing buildings. It is not expected that existing Company facilities immediately provide ramps, enlarged doors, special restroom facilities, etc.

| | |
|--|---|
| 9.2 Requirements for Ramps, Toilet Facilities, Doors and Parking..... | 2 |
| 9.3 Notes and References | 7 |

NOTE: An asterisk (*) after a section of text indicates that the information in that section is new or revised as of September 1996.

Fed-DOJ* 36.406

*Department of Justice

1. Refer to 28 CFR 36.406 for New Construction and Alteration design requirements.

9.2 REQUIREMENTS FOR RAMPS, TOILET FACILITIES, DOORS AND PARKING

A. GENERAL AND DESIGN REQUIREMENTS FOR RAMPS

Chevron Guidelines

1. Make reasonable accommodations for physically disabled Company employees at their work location.
2. Designs are based upon A117.1-1980 ANSI Standard which is applicable in most jurisdictions. Some state or local regulations may contain more stringent requirements and need to be consulted to assure compliance.
3. **Sidewalk Curb Ramps**
 - Sidewalk curb ramps shall be located or protected to prevent their obstruction by parked vehicles.
 - Sidewalk curb ramps shall be made reasonably non-slip under all weather conditions.
4. **Walkway Ramps**
 - Walkways with a slope exceeding 5 percent (1 to 20) are classified as ramps and shall be equipped with continuous handrails which extend at least 12 inches beyond the top and bottom of the ramps on both sides and parallel to the ground.
 - Handrails are not required if rise of ramps is 6 inches or less or horizontal length is 6 feet or less.
 - Where a ramp slopes 5 percent (1 to 20) or less and does not drop off, it is considered a "walk." Handrails and curbs are not required for walks and the width shall be a minimum 4 feet for handicapped use. See *Figures 9.1* and *9.2* for details.

CURB RAMP

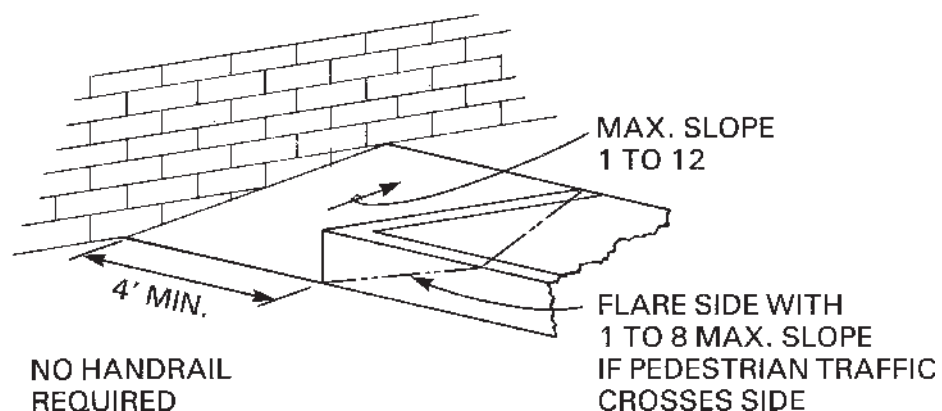
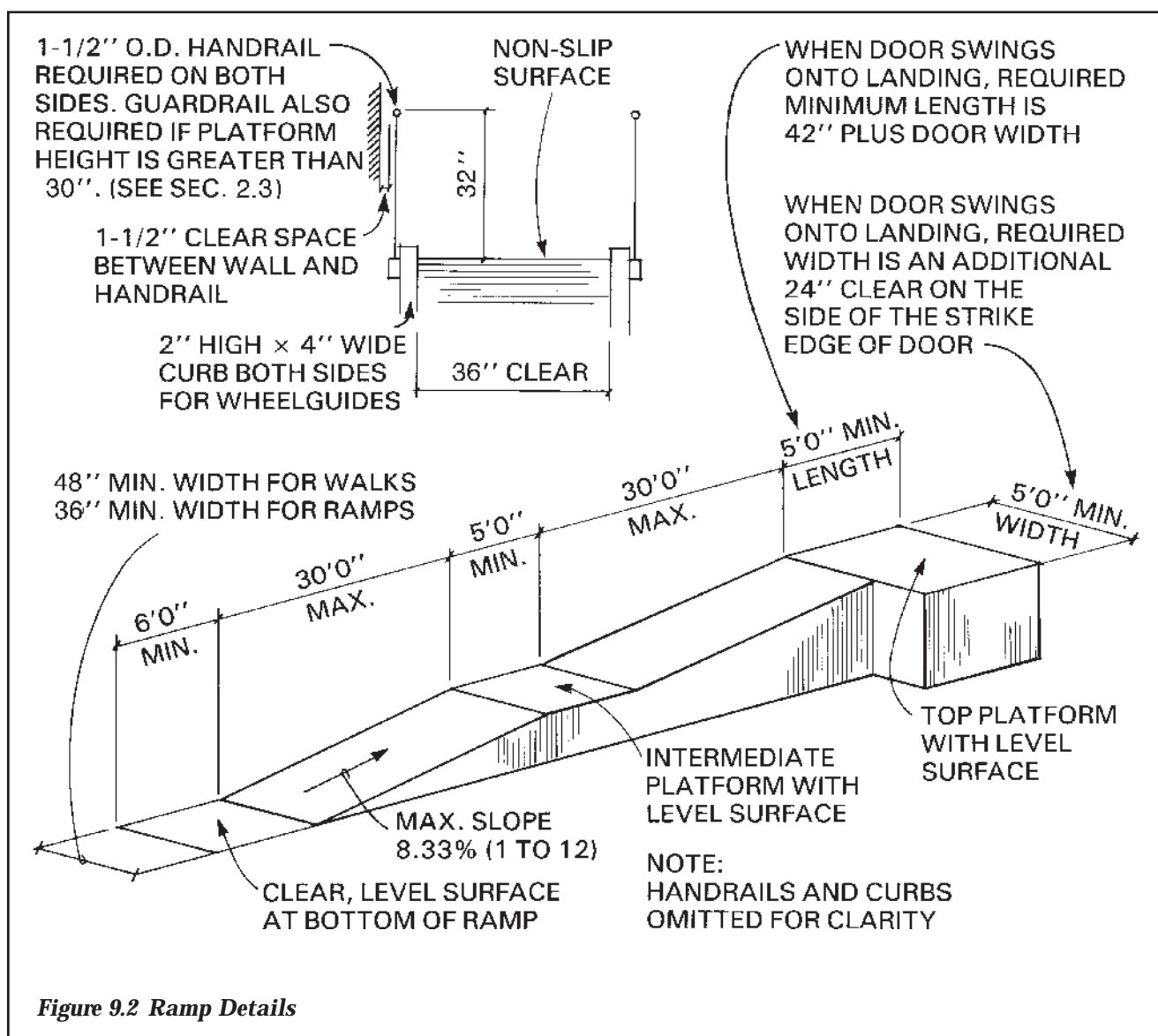


Figure 9.1 Typical Sidewalk Curb Ramp

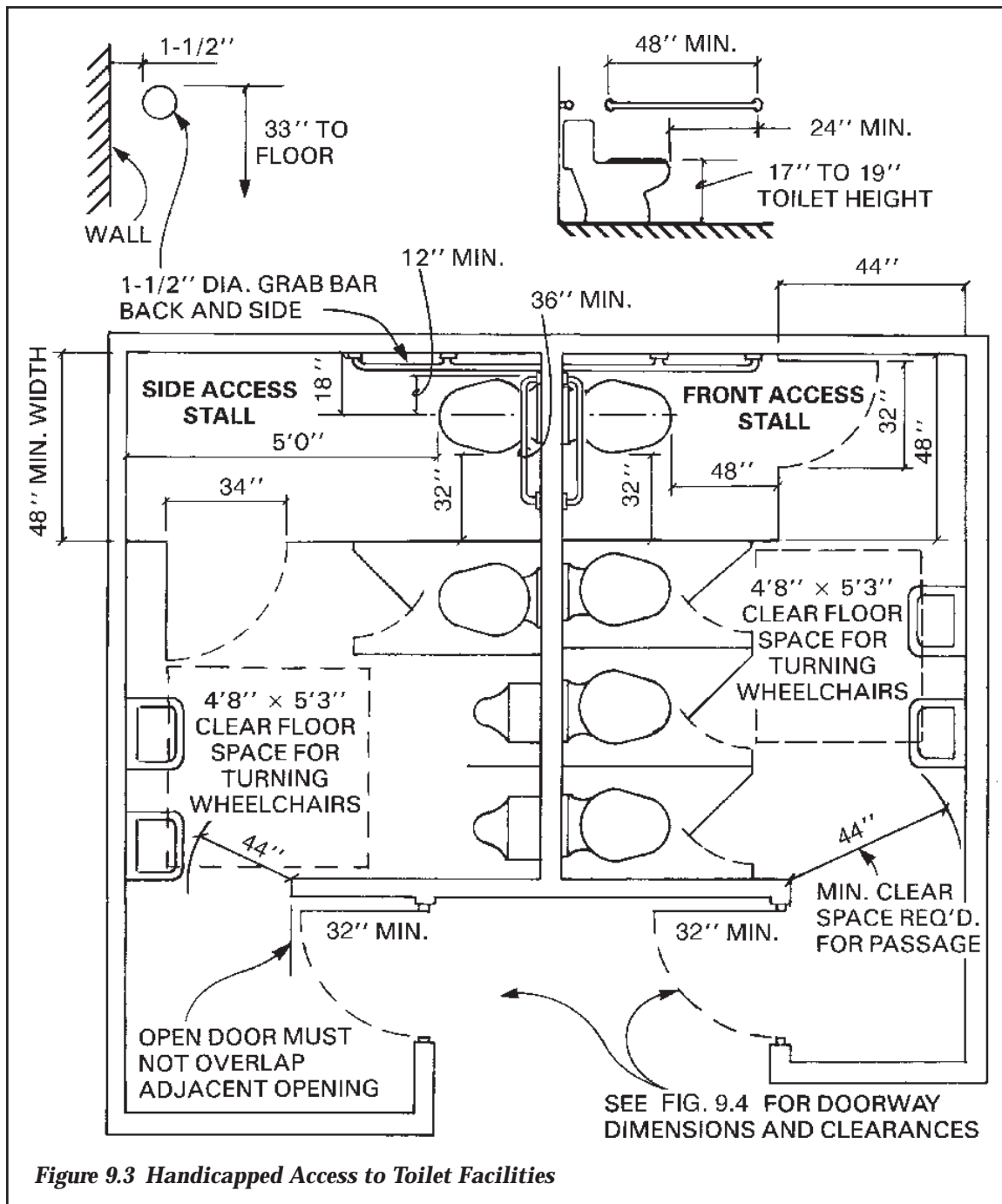




B. HANDICAPPED ACCESS TO TOILET FACILITIES

Chevron Guidelines

1. At least one toilet room mirror, lavatory, towel dispenser, and disposal unit shall be mounted so as to be usable by individuals in wheelchairs where access by the physically handicapped is required.
2. Doors for handicapped toilet stalls shall swing outward and shall be self-closing. See Figure 9.3 for details.

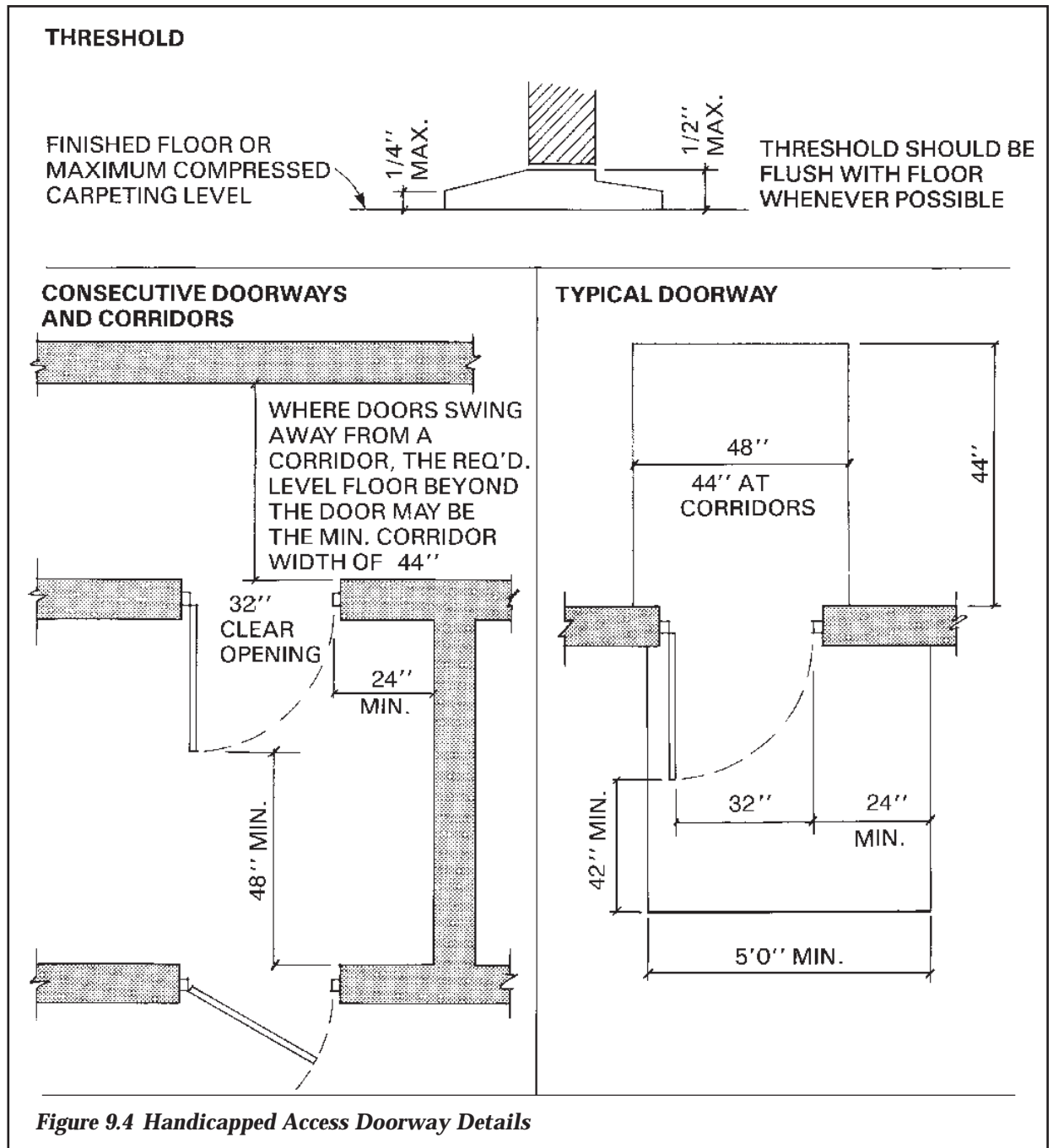




C. HANDICAPPED ACCESS TO DOORWAYS AND CORRIDORS

Chevron Guidelines

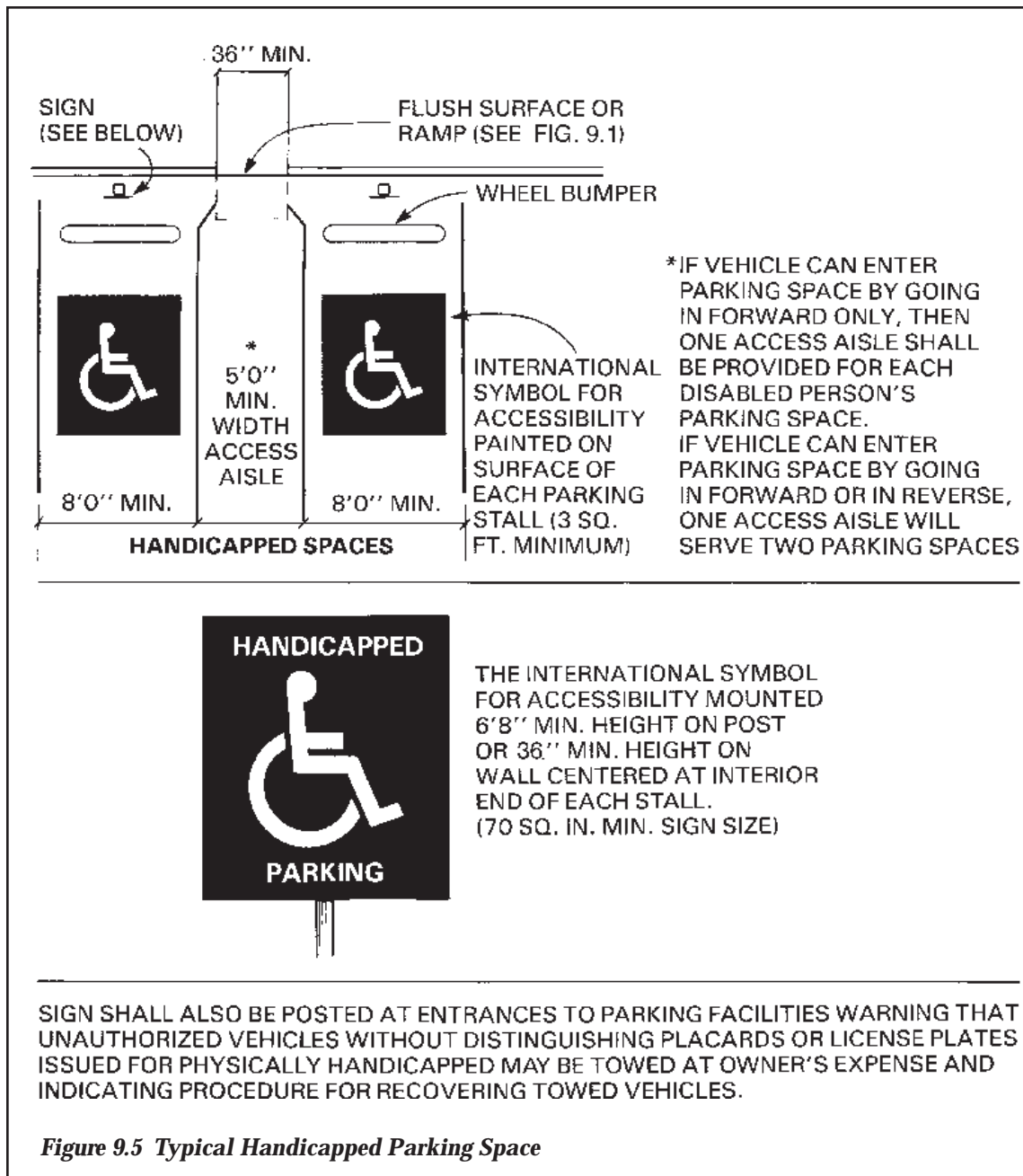
1. Doorways and corridor doors should operate with a minimum of physical effort (approximately 5 pound force). See *Figure 9.4* for details.
2. Glass doors shall have kick plates extending 1 foot 4 inches from the floor.



D. HANDICAPPED ACCESS TO PARKING

Chevron Guidelines

1. At least one designated parking space shall be provided where handicapped access is required.
2. Handicapped parking spaces should be located as near as possible to building entrances.
3. Handicapped parking spaces should be planned so that individuals in wheelchairs or on crutches do not need to travel behind other parked vehicles. See *Figure 9.5* for details.





9.3 NOTES AND REFERENCES

OTHER GUIDES

28 CFR 36.406

“ADA Accessibility Guidelines for Buildings and Facilities”

24 Cal. Code of Regs. Chapter 2-17

“Classification of All Buildings by Type of Construction and General Requirements”

24 Cal. Code of Regs. Chapter 2-71

“Site Development Requirements for Handicapped Accessibility”

Uniform Building Code Section 511

“Access to Toilet Facilities”

Uniform Building Code Sections 3301-3307

“Access to Building and Uses”

ANSI/CABO A117.1-1992

“Accessible and Usable Buildings and Facilities”

BOMA (Building Owners and Managers Association) International

“ADA Compliance Guidebook”