

NOTES

- 모든 제작품에는 HULL NO. ITEM NO.를 알루미늄 TYPE 위에 명기하여 입고 할 것.
(또는 PUNCHING된 꼬리표 부착할 것.)
- SS400은 필히 탄소 함유량이 0.23% 미만 일 것.
- 특기외 용접각장은 모재두께 X 0.6 으로 한다.
- 작업과정에서 도면상의 오류가 발생하면 즉시 통보하여 재발 방지토록 할 것.
- PAINTING : PAINTING SPEC. 참조.

필히 BLOCK별로 포장하여 입고할 것.

1

PAINTING AREA			S/P	NO	BRAND NAME	COLOR	DFT (μ m)	TOT.DFT (μ m)	PAINT CODE
INTERNAL PART	BARE STEEL	VISIBLE	—	1ST	INTERPRIME 538(CPA537)	GRAY	80	130	H1
		INVISIBLE	—	2ND	INTERLAC 665 (CLB000)	WHITE	50		
	GALV STEEL	VISIBLE	—	1ST	INTERPRIME 538 (CPA537)	GRAY	80	80	H3
		INVISIBLE	—	—	SAME AS SURROUND'G FINISH ONE(1) COAT AFTER INSTALLATION WITHOUT DFT MEASUREMENT		—	—	D1
EXTERNAL PART	BARE STEEL	OUTSIDE	SA2.5	1ST	INTERSHIELD300(ENA300/303)	BRONZE	125	375	V1
				2ND	INTERSHIELD300(ENA301/303)	ALUMI- NUM	125		
				3RD	INTERFINE 878 (SZD053)	STONE	60		
				4TH	INTERFINE 878 (SZD053)	STONE	65		
	GALV STEEL	INSIDE		1ST	INTERSHIELD300(ENA301/303)	ALUMI- NUM	200	200	V4
		VISIBLE	—	—	SAME AS SURROUND'G FINISH ONE(1) COAT AFTER INSTALLATION WITHOUT DFT MEASUREMENT		—	—	D1
		INVISIBLE	—	—	NO PAINT'G		—	—	D2

TOTAL (123) SHEETS WITH A COVER

THIS DRAWING OR DOCUMENT IS THE PROPERTY OF STX HEAVY INDUSTRIES CO.,LTD. AND MUST NOT BE PARTIALLY OR WHOLLY COPIED OR USED FOR ANY OTHER PURPOSE WITHOUT PRIOR WRITTEN PERMISSION OF STX.

stx	HULL NO.	6001					
	TYPE	NEW PIPELAY VESSEL(NPV)					
MANAGER : Y. K. JUNG		MFG OF STEEL OUTFITTING FOR ACCOMMODATION					
CHECKED : J. K. KIM							
DRAWN : J.S. PARK							
TEL.NO. +82-55-548-7671							
DEP'T	HULL OUTFITTING DESIGN TEAM	SCALE NONE	DATE 2009.02.26	DWG. NO. M4320000			
				REV. NO. 2			

stx Heavy Industries Co., Ltd.

MFG. OF HATCH & GRATING & BUOY RACK LIST

PAGE

29-2

111

ELEMENT NO.	SIZE(W1XH1)	MATERIAL	Q'TY	WEIGHT	LOCATION	REMARK
HC-01	830X630	SS400	1	65.2	B-DECK	
HC-02	630X530	SS400	1	55.3	F-DECK	

WEIGHT/(DECK) 120.5Kg
TOTAL WEIGHT 120.5 Kg

GR-01	1350X600	SS400	1	47.4	F-DECK	
GR-02	2260X590	SS400	1	57.9	1ST-DECK	
GR-03	460X650	SS400	1	12.3	1ST-DECK	
GR-04	1690X680	SS400	1	34.5	1ST-DECK	
GR-05	2260X590	SS400	1	57.4	A-DECK	
GR-06	460X650	SS400	1	12.3	A-DECK	
GR-07	1690X680	SS400	1	34.5	A-DECK	
GR-08	2260X590	SS400	1	57.4	B-DECK	
GR-09	460X650	SS400	1	12.3	B-DECK	
GR-10	1690X680	SS400	1	34.5	B-DECK	
GR-11	2260X590	SS400	1	57.4	C-DECK	
GR-12	460X650	SS400	1	12.3	C-DECK	
GR-13	1690X680	SS400	1	34.5	C-DECK	
GR-14	2260X590	SS400	1	57.4	D-DECK	
GR-15	460X650	SS400	1	12.3	D-DECK	
GR-16	1690X680	SS400	1	34.5	D-DECK	
GR-17	2260X590	SS400	1	57.9	E-DECK	
GR-18	460X650	SS400	1	12.3	E-DECK	
GR-19	1690X680	SS400	1	34.5	E-DECK	

WEIGHT/(DECK) 673.6Kg
TOTAL WEIGHT 673.6 Kg

TYPE - "A"	상세 DETAIL 참조 (PAGE 12 ~14)	2	70.0	BRIDGE DECK	WING(P&S)
TYPE - "B"	상세 DETAIL 참조 (PAGE 15,16)	8	148.0	C,D,E,F DECK	2/DECK(P&S)

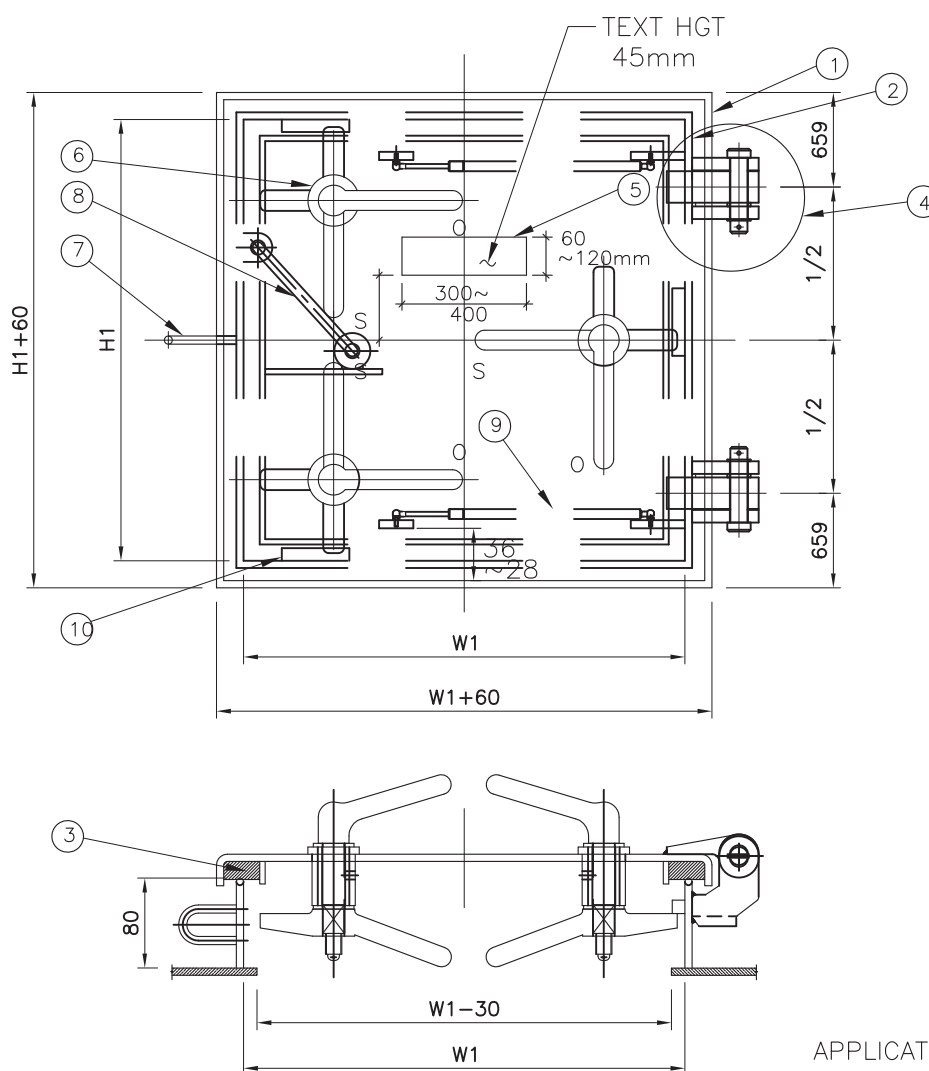
WEIGHT/(DECK) 218.0Kg
TOTAL WEIGHT 218.0 Kg

TYPICAL OF INSPECTION HATCH

PAGE

18-1

111



APPLICATION
 -IN ELEVATOR TRUNK
 -IN PRO. ELEVATOR TRUNK
 PAINT CODE : H1

10	WEDGE	15t	SS400	3	0.5		
9	ABSORBER	—	—	2			
8	BACK HOOK EYE	ø12 R.B	SS400	1	0.14		
7	HASP	ø9 R.B	SS400	1			A-TYPE
6	CLIP ASSY	—	SS400	3	10.8		
5	NAME PLATE W/BACK SEAT (ENGRAVED LETTER)	2t	SUS304	1			
4	HINGE ASS'Y	—	HINGE:SS400 HINGE PIN: SUS316	2	3.02		
3	RUBBER PACKING	20 x 40	NEOPRENE	1	3		
2	COAMING	8t x 80 Hgt.	SS400	1	11.5 (12.6)		
1	COVER PLATE	8t	SS400	1	26.4 (35.2)		
NO.	DESCRIPTION	SIZE	MATERIAL	Q'TY	WEIGHT	G.S.I. NO.	REMARK

TYPICAL OF INSPECTION HATCH

PAGE

-

HULL NO.

6001

DWG. NO.

R4300000



* APPLICATION

— ELEVATOR TRUNK

— PRO. ELEVATOR TRUNK

* PAINT CODE: H1

8	WEDGE	15t	SS400	3			
7	ABSORBER	—	—	2			MAKER STANDARD
6	CLIP ASSY	—	SS400	3			
5	NAME PLATE W/BACK SEAT	2t (ENGRAVED LETTER)	SUS304	1			
4	HINGE ASS'Y	—	HINGE:SS400 HINGE PIN: SUS316	2			
3	RUBBER PACKING	20 x 40	NEOPRENE	1			
2	COAMING	8t x 80H	SS400	1			
1	COVER PLATE	8t	SS400	1			
NO.	DESCRIPTION	SIZE	MATERIAL	Q'TY	WEIGHT	G.S.I. NO.	REMARK

stx Heavy Industries Co., Ltd.

PAGE	-
HULL NO.	6001
DWG. NO.	R4300000



5	GREASE NIPPLE	A-PT 1/8"	BSBM	1			
4	WASHER	3Txø 20ø 38	SUS304	3			
3	HINGE PIN	ø 19	SUS304	1			
2	CENTER HINGE	35T	SS400	1			
1	SIDE HINGE	12T	SS400	2			
NO.	DESCRIPTION	SIZE	MATERIAL	Q'TY	WEIGHT	G.S.I. NO.	REMARK

INSPECTION HATCH (CLIP ASSEMBLY)

PAGE

-

HULL NO.

6001

DWG. NO.

R4300000

NO.	DESCRIPTION	SIZE	MATERIAL	Q'TY	WEIGHT	REMARK
1	OUTSIDE HANDLE	ø22	S25C	1		
2	PLAIN WASHER	ø26Xø44X4.5	-	2		
3	SET SCREW	M4X6L	-	1		
4	SOCKET	ø55	SS400	1		
5	BUSH	ø35X63L	PBB3	1		
6	GREASE NIPPLE WITH CAP	PT 1/8	-	1		
7	O-RING	P25	NEOPRENE	1		
8	INNER HANDLE	ø22	S25C	1		
9	SPRING WASHER	ø27.5Xø45.3X6.8	SWRH4	1		
10	WEDGE	22X22X80L	SS400	1		
11	SPRING WASHER	41 FOR M18	SWRH4	1		
12	HEX. NUT	M18	SS400	1		
13	SPLIT PIN	ø4X30L	-	1		



NOTE : THE POSITION OF GREASE NIPPLE TO BE DECIDED FOR EASY GREASING
WHILE MANUFACTURING THE HATCH

INSPECTION HATCH (HANDLE ASS'Y)

PAGE	-
HULL NO.	6001
DWG. NO.	R4300000

① OUTSIDE HANDLE DETAIL



② INNER HANDLE DETAIL

