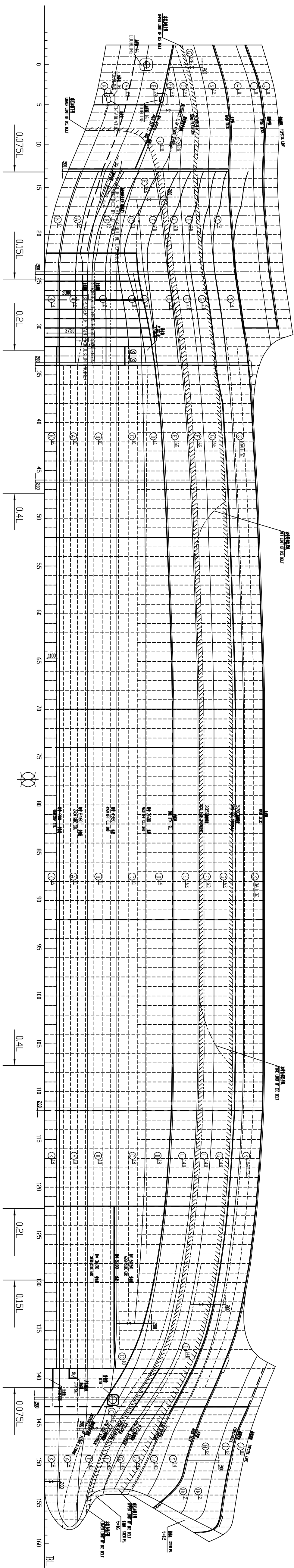


日期	
姓名	

日期	
姓名	

姓名	
学号	



主 要 量 度	
身長 HEIGHT	107.00mm
肩幅 BREADTH	18.00mm
袖口幅 DEPTH	7.80mm
衣長 DRESS LENGTH	4.80mm
襟幅 CAMBBER	2.00mm

PRINCIPAL PARTICULARS

總長	BP
LENGTH BETWEEN PER.	107.00m
型寬	B
BREADTH MLD	18.00m
型深	D
DEPTH MLD	7.80m
吃水	d
DRAUGHT	4.80m
梁拱 f	
CAMBER	200mm

SECTION		3									
CHUCK											
COPED											
SUPPORT											
11. CHARGE											
APPROX.		11.1									

圖 4-4

SHIPPING IN

11.1

11.2

外展式圖

SHELL EXPANSION PLAN

11.1

11.2

11.3

11.4

11.5

11.6

11.7

11.8

11.9

11.10

11.11

11.12

11.13

11.14

11.15

11.16

11.17

11.18

11.19

11.20

11.21

11.22

11.23

11.24

11.25

11.26

11.27

11.28

11.29

11.30

11.31

11.32

11.33

11.34

11.35

11.36

11.37

11.38

11.39

11.40

11.41

11.42

11.43

11.44

11.45

11.46

11.47

11.48

11.49

11.50

11.51

11.52

11.53

11.54

11.55

11.56

11.57

11.58

11.59

11.60

11.61

11.62

11.63

11.64

11.65

11.66

11.67

11.68

11.69

11.70

11.71

11.72

11.73

11.74

11.75

11.76

11.77

11.78

11.79

11.80

11.81

11.82

11.83

11.84

11.85

11.86

11.87

11.88

11.89

11.90

11.91

11.92

11.93

11.94

11.95

11.96

11.97

11.98

11.99

12.00

REMARK:

1. 材料好料堆碼，結構合理。
2. 材料堆碼高度適中，結構合理。
3. 材料堆碼高度適中，結構合理。

SEAMS OF STEEL PLATES BE ARRANGED IN PRINCIPLE, YARD MAY GIVE PROPER ADJUSTMENT ACCORDING TO STEEL PLATES ORDERED.

3. 材料堆碼高度適中，結構合理。

LONGITUDINAL JOINING SEAM BE ARRANGED BY YARD ACCORDINGLY.

REMARK:

- 1 本體の構成要素、並行方向、
ST/B SIDE SHOWN, PORT SIDE SIML
- 2 本體の材料の種類、工号の材料の種類を並行方向に
SEAMS OF SHELL PLATES BE ARRANGED IN PRINCIPLE, YARD MAY GIVE
PROPER ADJUSTMENT ACCORDING TO STEEL PLATES ORDERED.
- 3 本體の材料の種類、
LONGITUDINAL JOINING SEAM BE ARRANGED BY YARD ACCORDINGLY.

SIMI.

5 TO