



TEAMTEC STRIPPING EJECTORS

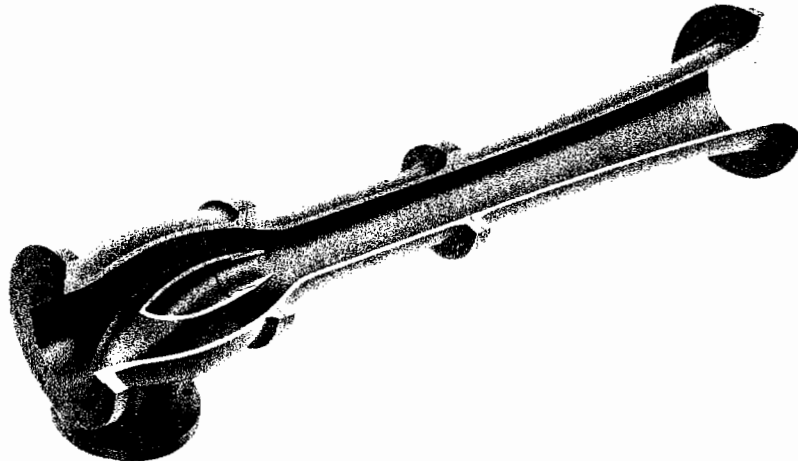
APPROVAL

DRAWINGS / CHARACTERISTIC CURVES

Shipyard: Hai Cheung Trading Co.(Hk)Ltd

Order no.: DL070930F2

Hull no.: YRO-2005-188





TEAMTEC STRIPPING EJECTORS

Previously Golar Stripping Ejectors

SCOPE OF SUPPLY

Ballast Ejector

4 ea. TEAMTEC STRIPPING EJECTOR type 6-6-8 47/71

Drawing no.: 1301499

Material of Ejector body: NiAlBz¹⁾

Material of Nozzle: AISI 316¹⁾

Flange standard: DIN PN 10²⁾

Guarantee: 5 Years

Capacity: 80 m³/h at 4 mwc suction lift ⁴⁾

Discharge head: 36 mwc ⁴⁾

Total head: 40 mwc ⁴⁾



Driving water: 253 m³/h at 8 bar ^{3), 4)}

The following documentation is included in our scope of supply:

- TeamTec Works Certificate for pressure testing at 25 bar.
- Approval- and Working drawings.
- Final drawings also containing part list.
- DNV Certificate

Notes.

- 1) All standard TEAMTEC STRIPPING EJECTORS are made in Ni-Al Bronze (ISO1338, CuAl10Fe5Ni5) or in Gun Metal / Rg 9 (ISO1338, CuSn9Pb2Zn4) having nozzles in Monel Metal or AISI 316.
- 2) All major standard flanges can be delivered according to customer's request.
- 3) Available driving medium measured or estimated at the ejector.
- 4) Data are given by the customer or estimated from TeamTec AS if other values are more relevant, please contact TeamTec AS for new calculation for capacity and driving water consumption.

 25.02.2008 

Weight 155 Kg

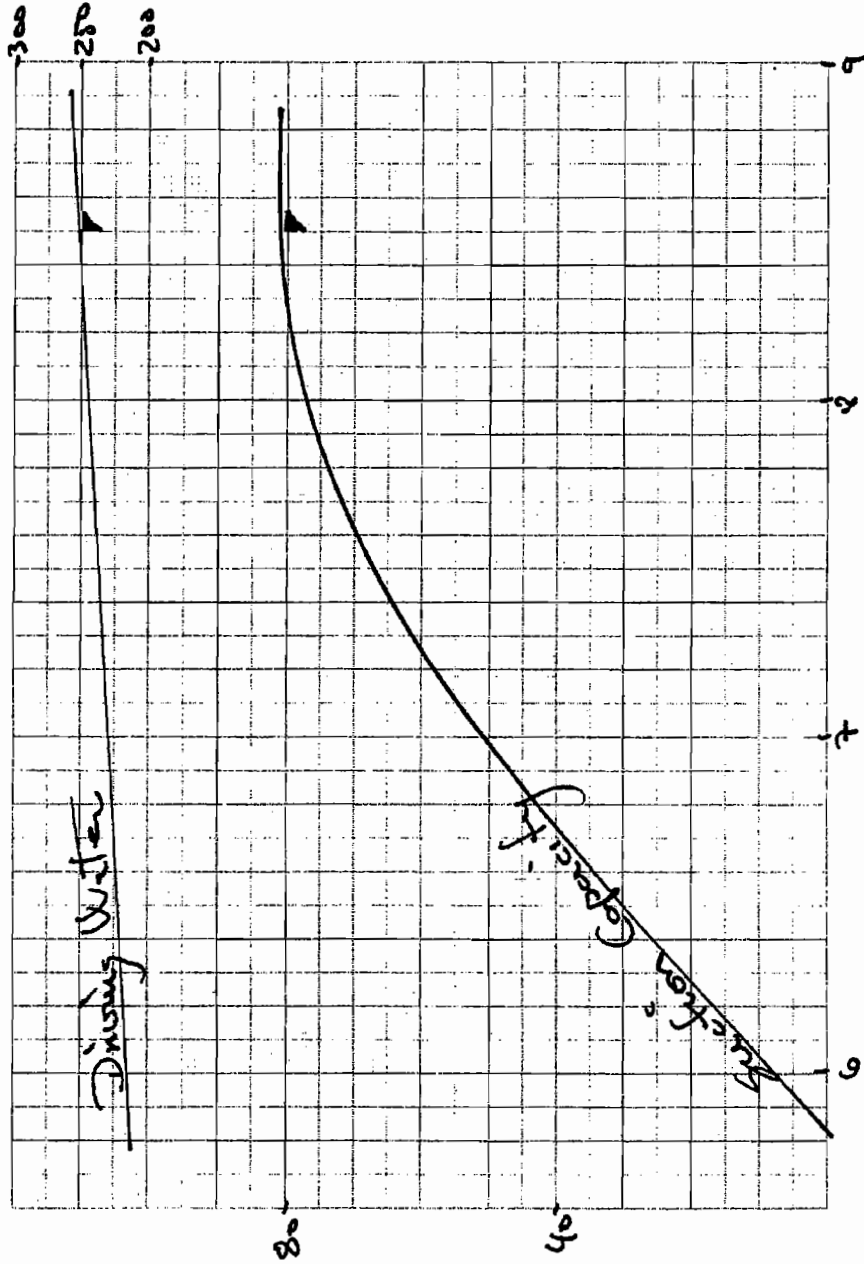
7	8	9	10	11	12	13	14	15	16	17	18	19	20	21	22	23	24	25	26	27	28	29	30	31	32	33	34	35	36	37	38	39	40	41	42	43	44	45	46	47	48	49	50	51	52	53	54	55	56	57	58	59	60	61	62	63	64	65	66	67	68	69	70	71	72	73	74	75	76	77	78	79	80	81	82	83	84	85	86	87	88	89	90	91	92	93	94	95	96	97	98	99	100						
1	2	3	4	5	6	7	8	9	10	11	12	13	14	15	16	17	18	19	20	21	22	23	24	25	26	27	28	29	30	31	32	33	34	35	36	37	38	39	40	41	42	43	44	45	46	47	48	49	50	51	52	53	54	55	56	57	58	59	60	61	62	63	64	65	66	67	68	69	70	71	72	73	74	75	76	77	78	79	80	81	82	83	84	85	86	87	88	89	90	91	92	93	94	95	96	97	98	99	100

Ejector 6-6-8 S

UNLESS OTHERWISE SPECIFIED
Tolerances: NS-ISO 2768-1-m

1301499

DIVING WATER CONSUMPTION (m³/h)



SUCTION CAPACITY (m³/h)

DRIVING WATER PRESSURE (bar)

TEAMTEC STRIPPING EJECTOR
(PREVIOUS COLAR STRIPPING EJECTOR)

SUCTION LIFT: 4 mWC

DISCHARGE HEAD: 36 mWC

TOTAL HEAD: 40 mWC

TYPE: 6-6-9 47/71 Date: 25/2-03 Sign: RB

Handwritten signature