



Skeie Drilling & Production



Presentation NFLB Conference February 2008

KFELS Class "N" Drilling / Production Units

- ☐ The Units are designed to comply with SUT requirements for operation on Norwegian Continental Shelf
- ☐ Max water depth drilling operation 130 m.
- ☐ Max water depth drilling/tie back of 10 production wells and process module of 3500ton installed 120 m.
- ☐ Max jacking height 64 m air gap below cantilever @ 90 m water depth
- ☐ Sub sea completion envelope 20 m x 23m without moving the rig.
- ☐ Combined solution with storage tank and well head shaft



KFELS Class "N" Drilling / Production Units

- ☐ Skeie Drilling & Production have 3 units on order with KFELS
 - ✓ Rig 1 delivery Q 1- 2010
 - ✓ Rig 2 delivery Q 3- 2010
 - ✓ Rig 3 delivery Q 4 -2010

- ☐ Skeie Drilling & Production have a Letter of Intent with Skeie Energy AS.

- ☐ A firm Drilling Contract is to be signed within July 1, 2008

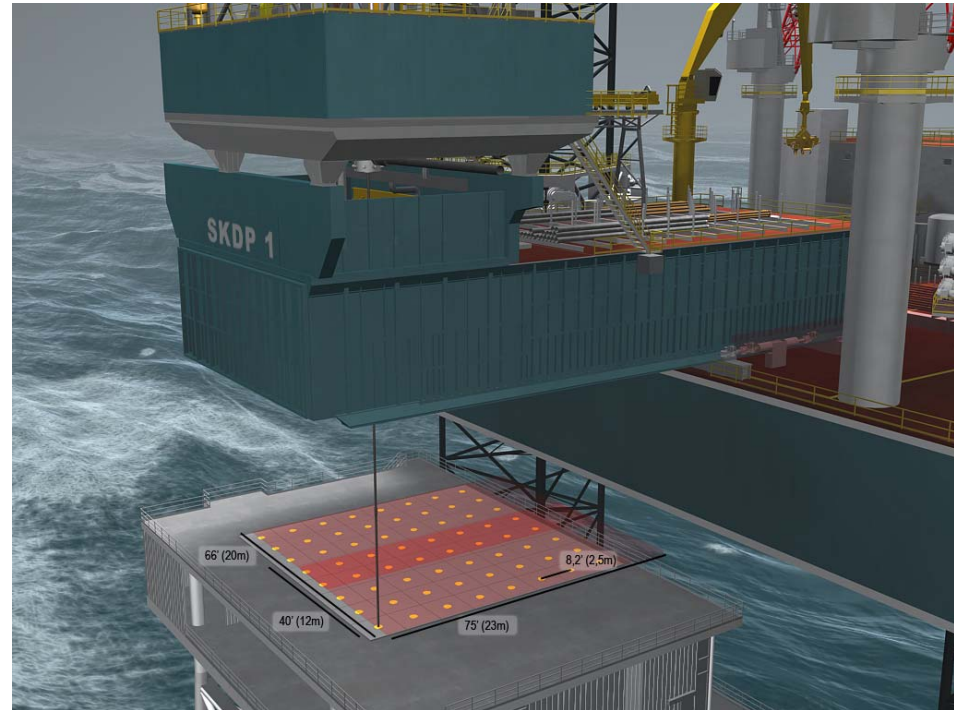
- ☐ Firm contract period of 3 year + 2 x 1 year options

- ☐ Until September 30, 2008 Skeie Energy AS can elect to extend the firm Contract period to 5 Years + 2 x 1 year options



Production Drilling over pre-installed jacket

- ❑ Footprint for drilling over a jacket with canterlever in primery and secondary position
Max 68 slots.



Integrated arrangement with storage tank and wellhead shaft in concrete

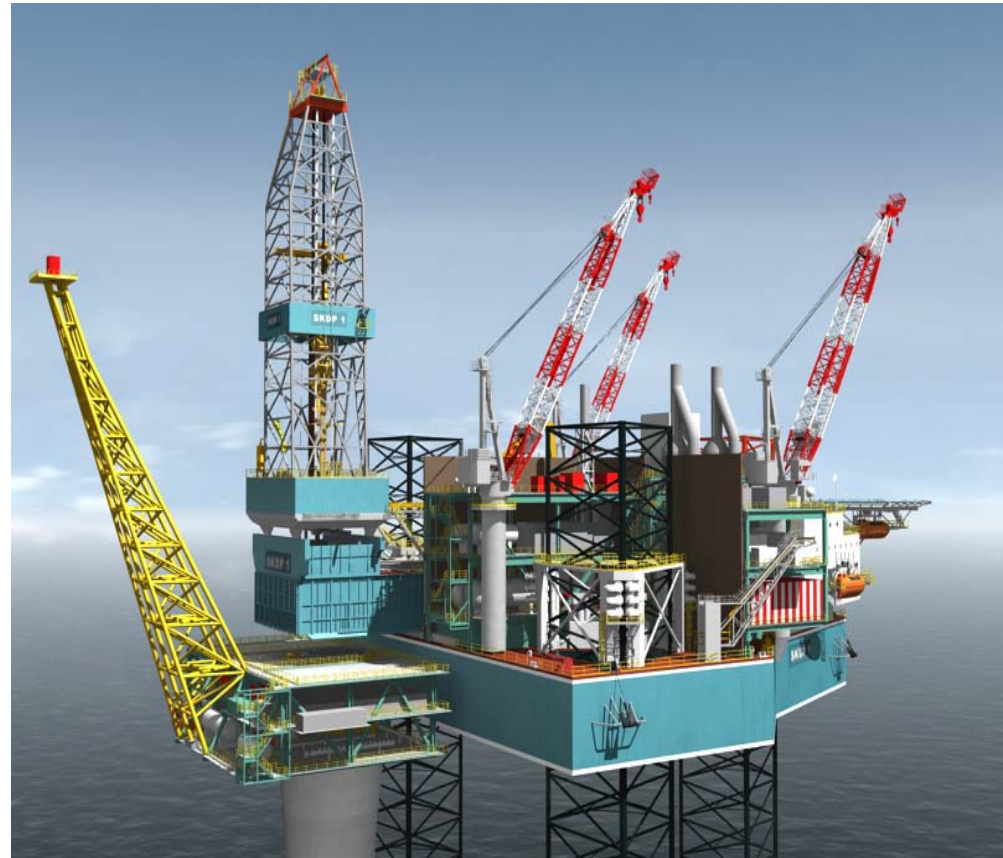


- ❑ The storage tank /wellhead shaft can be reused on a new location

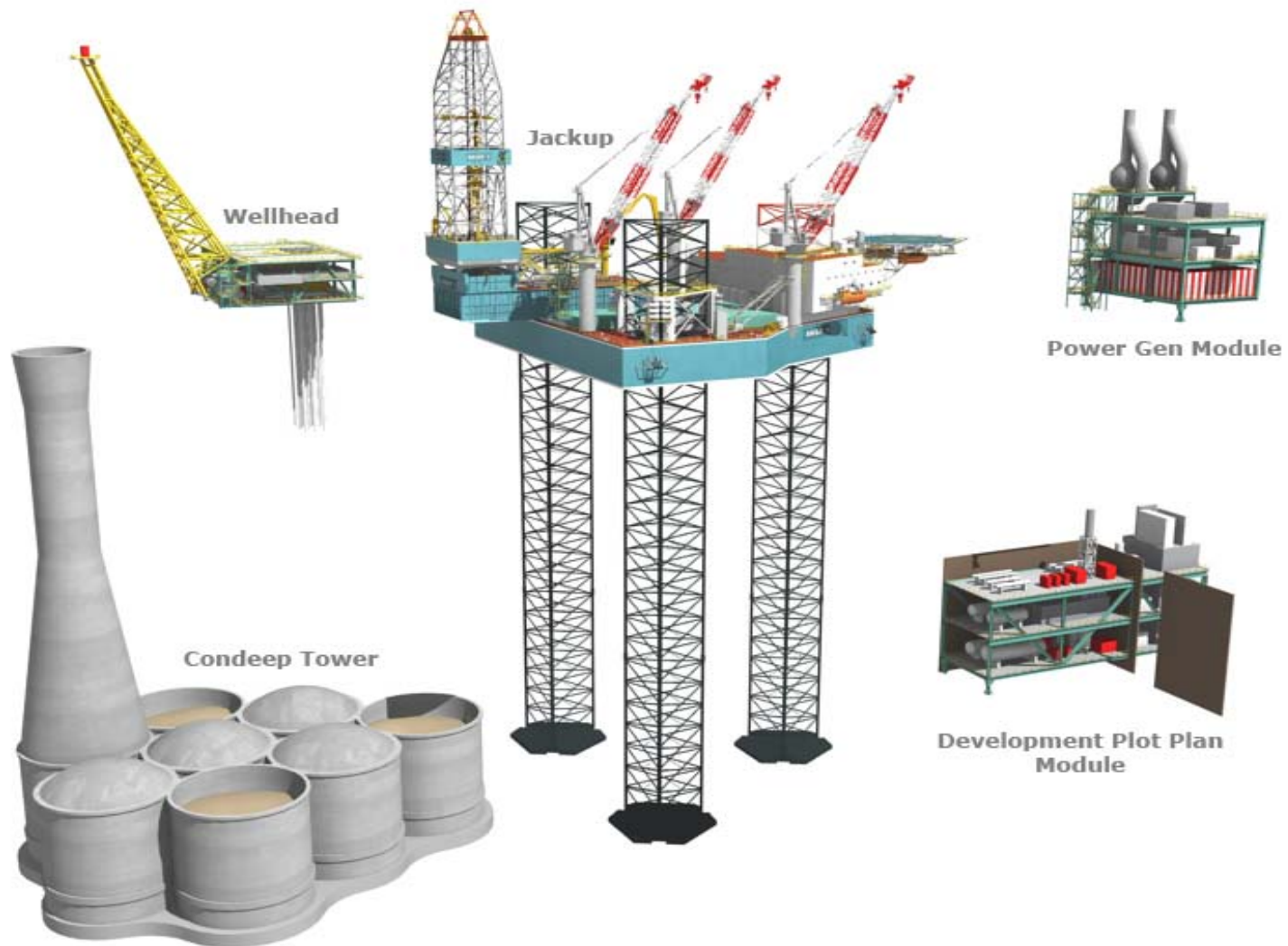


Integrated arrangement wellhead deck

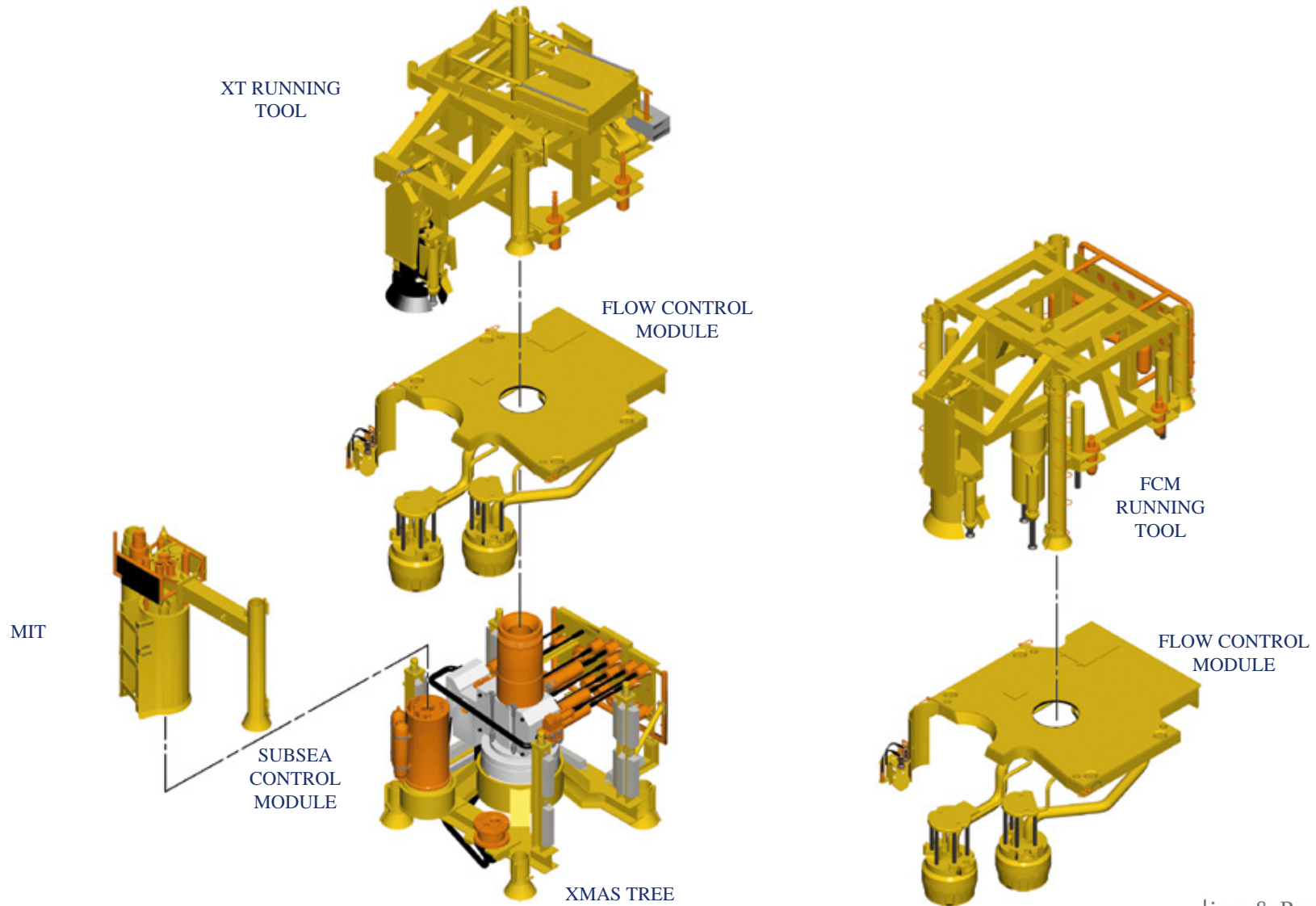
- ❑ Wellhead deck on top of concrete shaft.



Integrated arrangements for medium fields 50 mil/ 70 mil BBL.

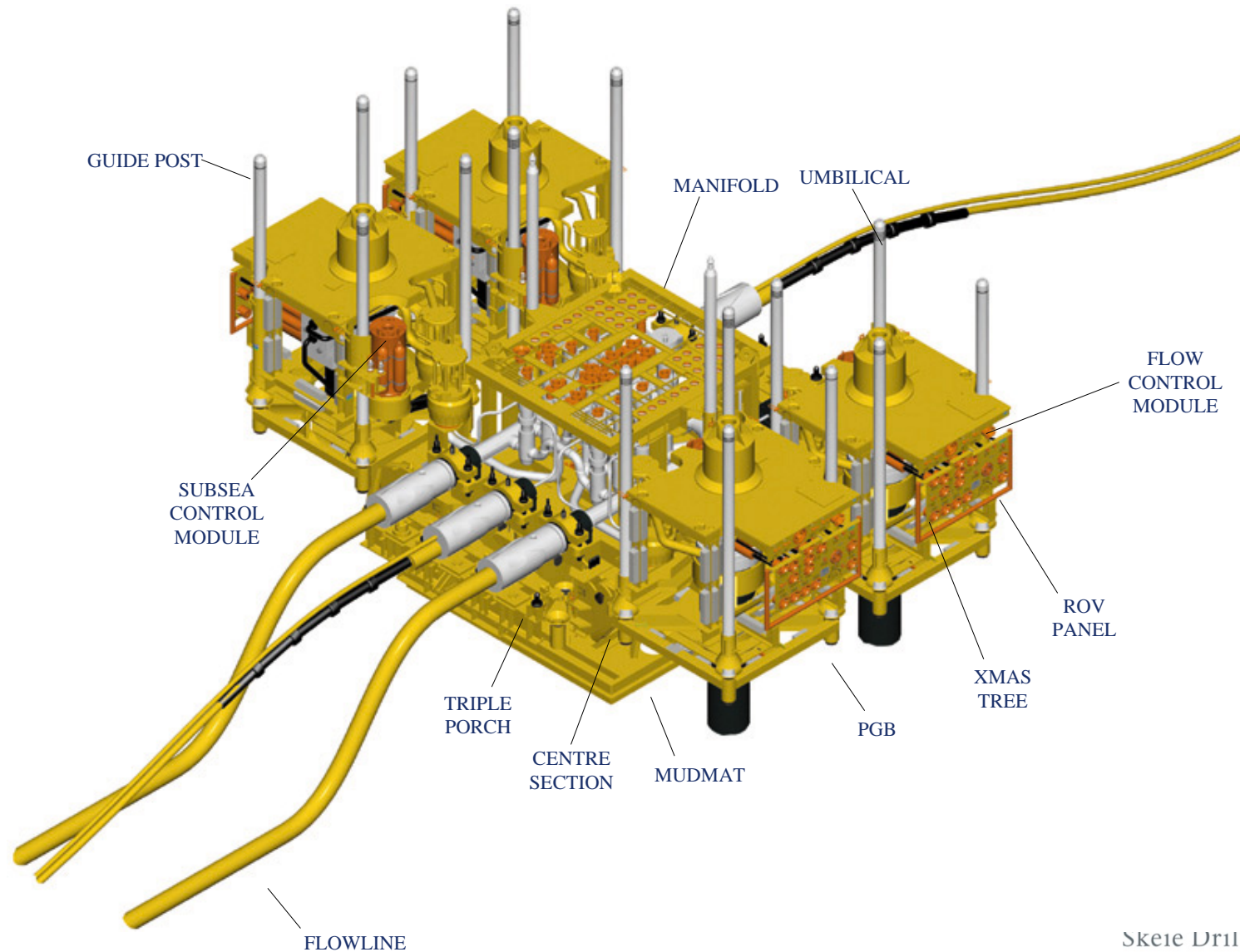


X-MAS Tree System Overview



CRS Engineering & Production

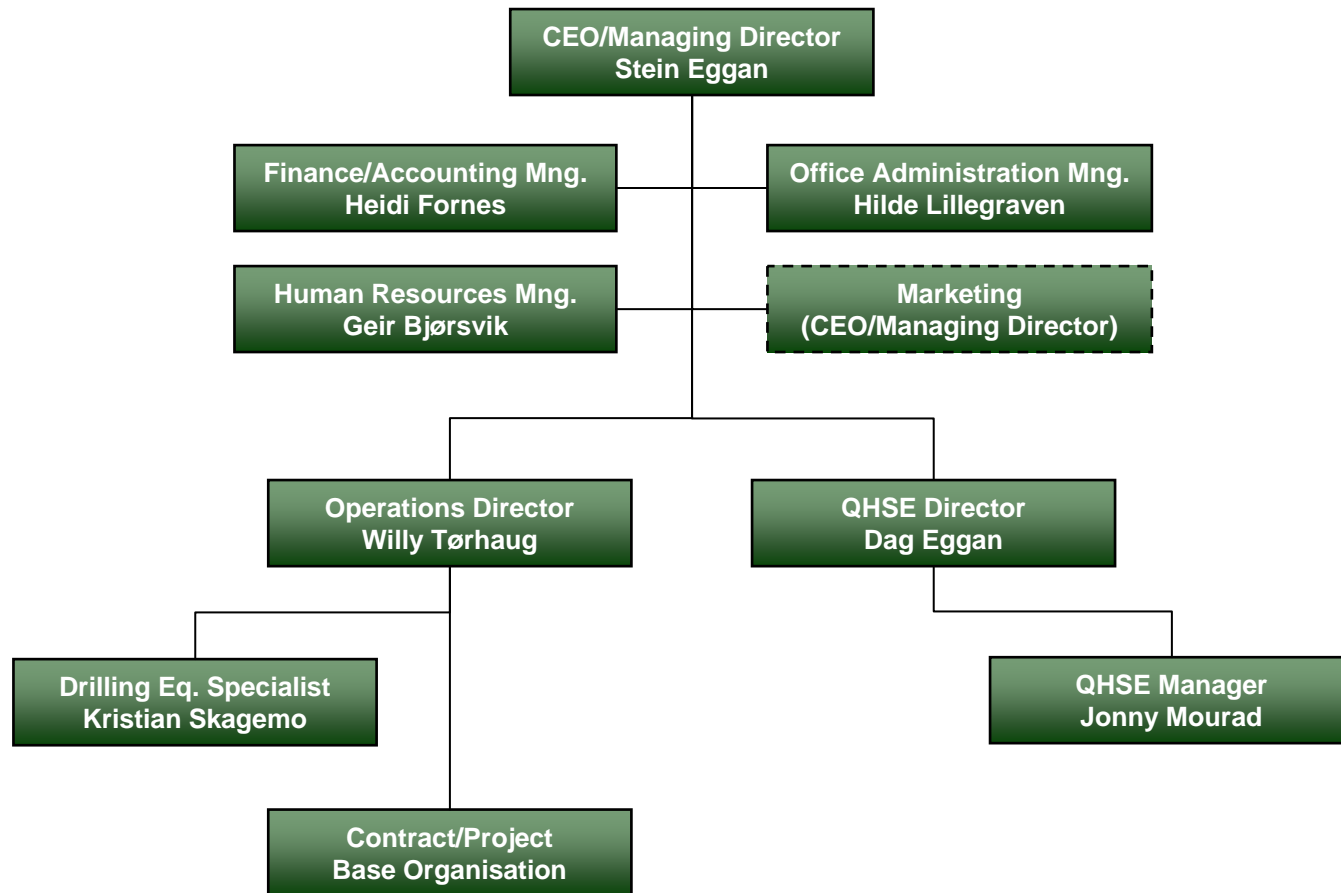
HOST Template



SKDP Organisation

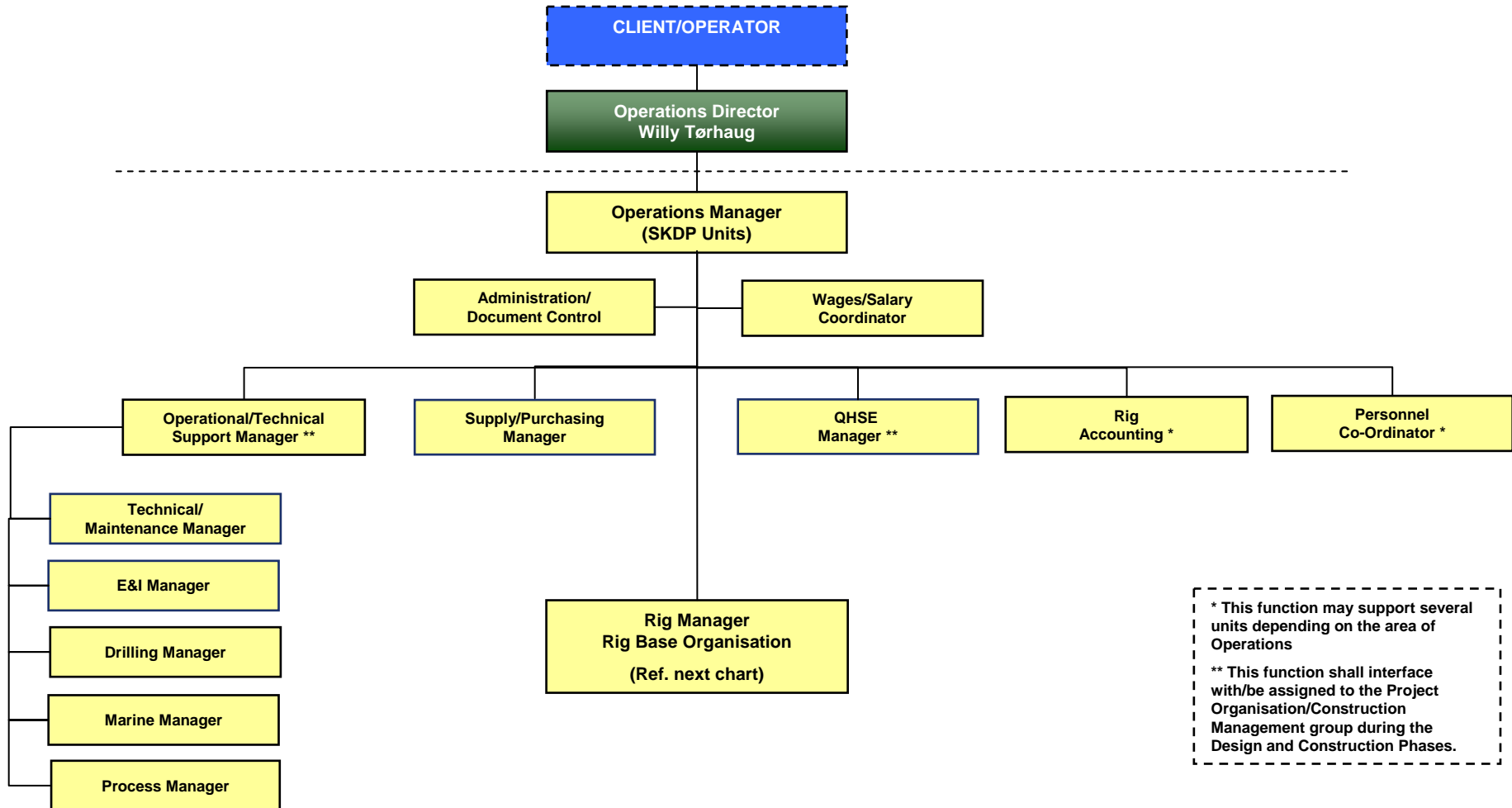
MAIN ORGANISATION

(PROCORP OFFSHORE MANAGEMENT SERVICES AS)



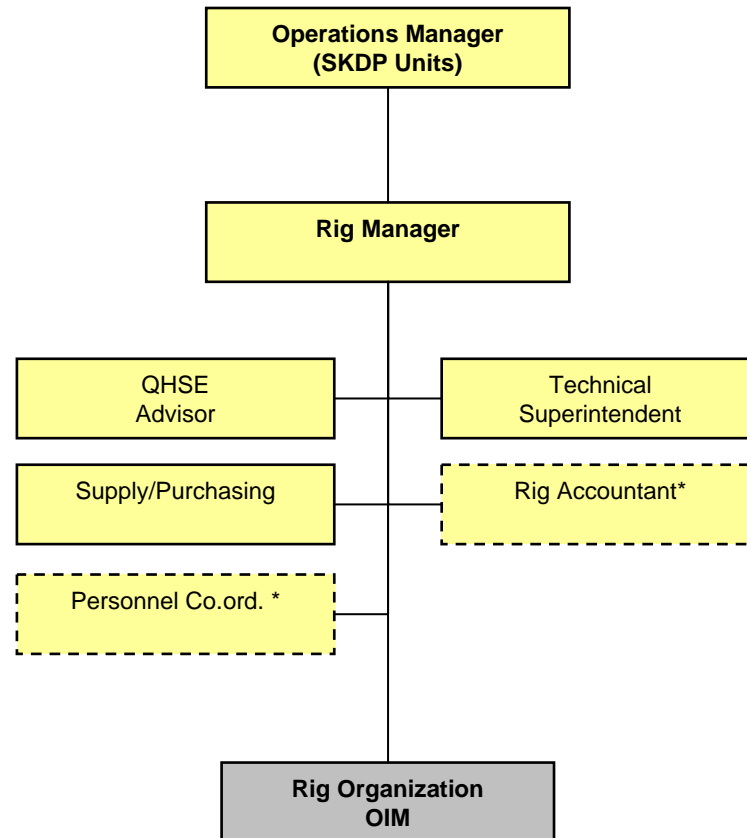
SKDP Organisation

RIG BASIS ORGANISATION – UNIT 1, 2 & 3



SKDP Organisation

RIG BASE ORGANISATION (PER UNIT)



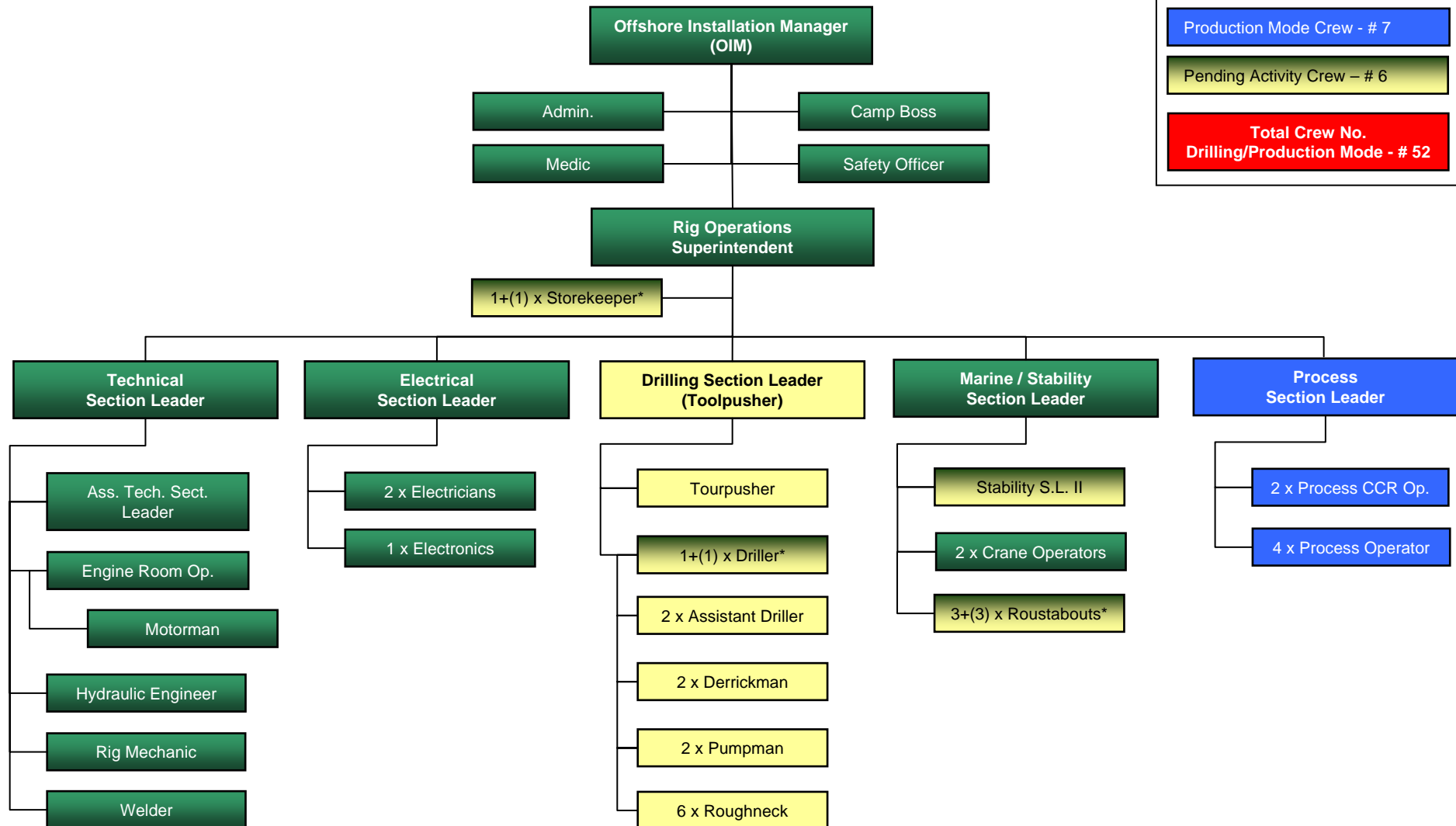
* This function may be same as for Basis Organisation depending of the area of Operations (i.e. Norway)



SKDP OFFSHORE ORGANISATION

UNIT OFFSHORE ORGANISATION

Permanent Crew Onboard - # 25
Drilling Mode Crew – # 14
Production Mode Crew - # 7
Pending Activity Crew – # 6
Total Crew No. Drilling/Production Mode - # 52



* Number in brackets (#) indicates additional number for full Drilling or combined Drilling/Production mode activity.



Skeie Drilling & Production

SKDP Personnel Mobilisation Scedule

1. Onshore Operations Basis Organisation

- Operations Manager Q1, 2008
- Operational/Technical Support Manager Q1, 2008
- Technical/Maintenance Manager Q2, 2008
- E&I Manager Q3, 2008
- Drilling Manager Q2, 2008
- Marine Manager Q2, 2008
- *(Process Systems Manager) (as relevant)* Q2, 2008
- Supply/Purchasing Manager Q3, 2008
- QHSE Manager Q1, 2008
- Personnel Co-ordinator Q4, 2008
- Rig Accountant Q4, 2008
- Office Administration



SKDP Personnel Mobilisation Scedule

2. Rig Base Organisation

- Rig Manager Q3, 2008
- Technical Superintendent Q4, 2008
- Supply/Purchasing Co-ordinator Q4, 2008
- QHSE Advisor Q4, 2008



SKDP Personnel Mobilisation Scedule

3. Rig Offshore Organisation

Project Interface/ Operations Site Personnel (Full time or Rotation)

- OIM/Captain (1) Q1, 2009
- Rig Operations Superintendent (1) Q1, 2009
- Chief Engineer/Technical Section Leader Q1, 2009
- Electrical Supervisor/Section Leader (1) Q1, 2009
- Process Section Leader (1) Q1, 2009



SKDP Personnel Mobilisation Scedule

4. Rig Offshore Organisation

Rig Operations Crew (2/4 Rotation Scedule)

- Rig Operations Superintendent (2) Q2, 2009
- OIM/Captain (2) Q2, 2009
- Chief Engineer/Technical Section Leader (2) Q2, 2009
- Electrical Supervisor/Section Leader (2) Q2, 2009
- Marine/Stability Section Leader (3) Q2, 2009
- Toolpusher (3) Q2, 2009
- Tourpusher (3) Q2, 2009
- Driller (6) Q2, 2009
- Assistant Driller (6) Q2, 2009
- Safety Officer (3) Q2, 2009
- Rig Electrician (6) Q2, 2009
- Electronic Technician (3) Q2, 2009
- Hydraulic Engineer (3) Q2, 2009
- Rig Mechanic (3) Q2, 2009



SKDP Personnel Mobilisation Scedule

4. Rig Offshore Organisation

Rig Operations Crew (2/4 Rotation Scedule) – continued

- Stability Section Leader II (3) Q2, 2009
- Ass. Technical Section Leader (3) Q2, 2009
- Crane Operator (6) Q4, 2009
- Derrickman (6) Q4, 2009
- Pumpman (6) Q4, 2009
- Engine Room Operators (3) Q4, 2009
- Motormen (3) Q4, 2009
- Materialsman/Storekeeper (6) Q4, 2009
- Roughneck/Roustabout (18 + 18) Q4, 2009
- Rig Admin. (3) Q4, 2009
- Medic (3) Q4, 2009
- Camp Boss (3) Q4, 2009
- Welder (3) Q4, 2009



Contact Details for Recruitment

Geir Bjørsvik

HR/Personnel Manager

Skeie Drilling & Production

Telephone: + 47- 73 10 84 65

Mobile: + 47- 92 65 00 60

Fax: + 47- 73 51 05 01

Web: www.skeiedrilling.com / www.poms.no

.....
Olav Tryggvasonsgt 2B

N-7011 Trondheim

Norway



Skeie Drilling & Production