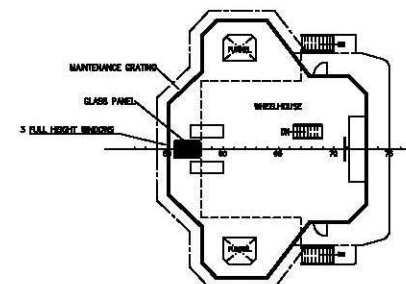
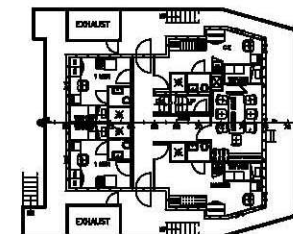


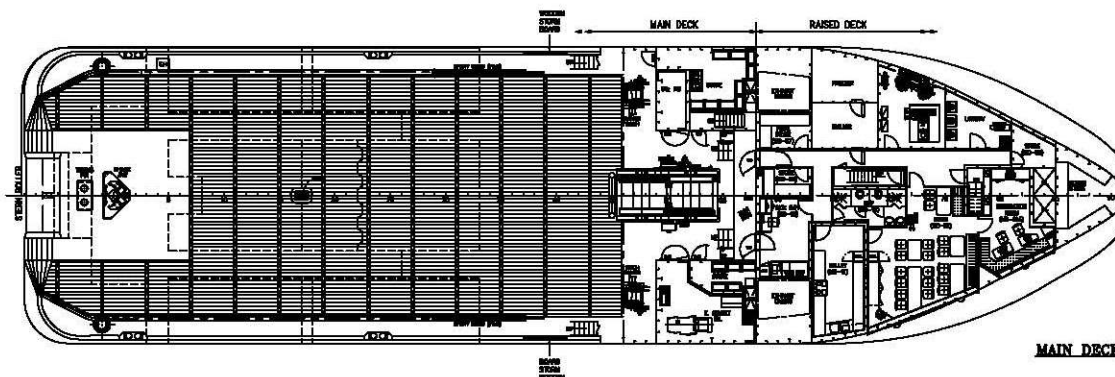
OUTBOARD PROFILE



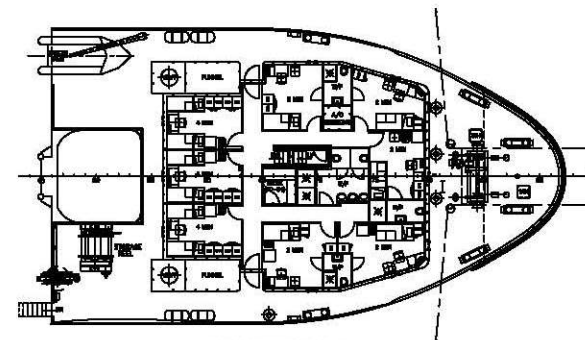
NAV. BRIDGE DECK



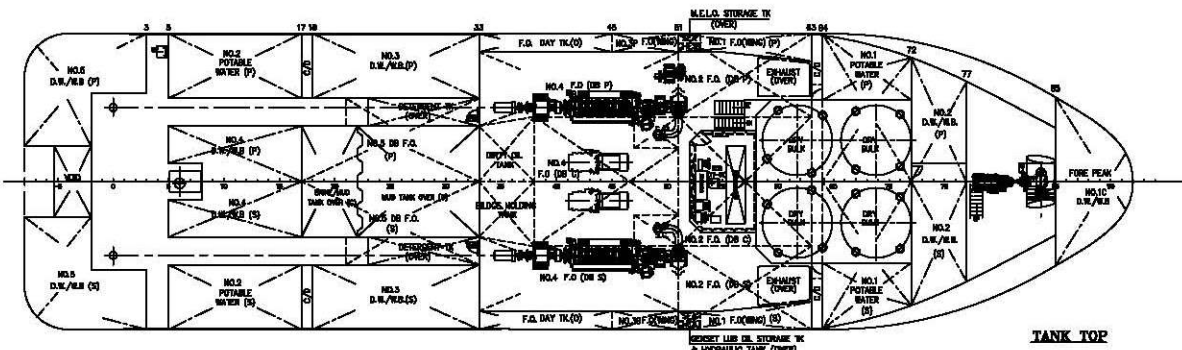
BRIDGE DECK



MAIN DECK



FORECASTLE DECK



TANK TOP

PRINCIPAL PARTICULARS

LENGTH O.A.	80.00m
LENGTH W.L.	58.74m
BEAM MLD.	16.00m
DEPTH MLD.	8.00m
DRAFT DESIGNED	4.20m
DRAFT MAX.	5.10m
COMPLEMENT	26 MEN
POTABLE WATER	300m ³ (approx.)
F.O.	550m ³ (approx.)
D.W./S.W.B.	783m ³ (approx.)
LIQUID MUD	230m ³ (approx.)
DRY BULK	170m ³ (approx.)
DECK SPACE	380m ² (approx.)

15.11.04	MODIFIED AS PER OWNER'S REQUEST.	B	25AH
20.10.06	DECKHOUSE FRONT CHANGED TO SLOPE.	B	25AH
04.09.06	WHEELHOUSE CHANGED AS PER DESIGN PROGRESS.	A	25AH
DATE	MODIFICATION	REV	BY
80m(6000HP) ANCHOR HANDLING/SUPPLY VESSEL			
TITLE	GENERAL ARRANGEMENT		
OWNER	PT. NATAMAS	YARD NO.7027/7028/7033/7034	
BUILDER			
CLASS	ABS		
CONAN WU & ASSOCIATES			
MARINE ARCHITECTS			
SINGAPORE			
INFORMATION BUILDING LEVEL 3, 5 INTERNATIONAL BUSINESS PARK,			
JURONG EAST SINGAPORE 609991			
TEL: (65) 6962-1130 FAX: (65) 6962-1133 / 6962-0333 E-MAIL: conanwu@conanwu.sg			
CHINA			
JAO TONG BUILDING LEVEL-14, HONGKONG-2 WEST HONGKONG, HONGKONG 20001			
TEL: (86) 21-63670881/63670846 FAX: (86) 21-63677330 E-MAIL: wu@conanwu.com.cn			
DRAWN	CHECKED	APPROVED	SCALE
25AH	CHINA		1:150
24.07.06	24.07.06		
DRAWING NO.			REV
C4231/G-1			B
THIS DRAWING AND THE INFORMATION CONTAINED HEREIN ARE SUPPLIED ON THE			
UNDERSTANDING THAT THEY ARE THE EXCLUSIVE PROPERTY OF CONAN WU & ASSOCIATES			
THEY MUST NOT BE USED OR REPRODUCED IN WHOLE OR IN PART WITHOUT PERMISSION IN WRITING.			

OTTO INDUSTRIAL CO PTE. LTD

9 Temasek Boulevard #33-01 Suntec Tower Two Singapore 038989

Telp : 65-68632366, Fax : 65-68631127

Website : www.ottoind.com.sg and E-mail : ottoind@singnet.com.sg

TO BE NAMED :**6000 HP ANCHOR HANDLING & SUPPLY VESSEL****PRINCIPAL PARTICULARS**

Port of Registry	:	Singapore
Length Overall	:	60.00 M
LBP	:	58.70 M
Breadth Moulded	:	16.00 M
Depth Moulded	:	6.00 M
Design Draft	:	4.20 M
Deadweight	:	1700 T
Gross Tonnage	:	1200 T
Deck Loading	:	5 T/M2
Clear deck area	:	360 M2
Speed	:	13 Knots
Classification	:	ABS +A1E Offshore Support, Towing & Fire Fighting Vessel Class 1, +AMS,DP1
Bollard Pull	:	72 T

MAIN MACHINERIES

Main Engines	:	2 X Niigata 6MG28HLX
Total Power	:	2 X 3000 Bhp
Propulsion System	:	CPP with propeller in nozzle
Bow Thruster	:	CPP with 8 t thrust
Stern Thruster	:	CPP with 5 t thrust
Generator	:	2 X 320 KW, 440/3PH/60Hz
Emergency Generator	:	1 X 90EKW, 440V/3PH/60Hz
Shaft Alternator	:	2 x 750 Kw, 440/3ph/60Hz

TANK CAPACITY

Fuel Oil Tank	:	550 M3
Fresh Water Tank	:	300 M3
Water Ballast/Drill	:	820 M3
Foam	:	10 M3
Detergent	:	10 M3
Mud Tank	:	2 X 115 M3
Bulk Tank	:	4 X 42.5 M3

DISCHARGE RATES

FO Transfer Pump	:	1 X 100 M3/Hr @ 60m Head
Fresh Water Transfer	:	1 X 100 M3/Hr @ 60m Head
Mud Pump	:	2 X 60 M3/Hr @ 7.5 Bar
Ballast Pump	:	1 X 100 M3/Hr @ 60m Head
Drill Water Pump	:	1 X 100 M3/Hr @ 60m Head

DECK MACHINERIES

Anchor handling winch	:	150 T, with drum cap. 1000m X 52 dia. Brake holding cap. 200 T
Tugger winch	:	2 X 5 T @ 9 m/min
Capstan	:	2 X 5 T @ 9 m/min
Towing pin	:	2 X 160 T (BP)
Shark jaw	:	1 X 200 T (SWL)
Anchor windlass	:	9 T @ 12 m/min
Stern Roller	:	200 T (SWL)

ACCOMMODATION

Single berth	:	6 X 1	Berth
Double berth	:	2 X 2	Berth
Four men berth	:	4 X 4	Berth
Total complement	:	26	Berth

NAVIGATION & COMMUNICATION EQUIPMENT

1 Main Radar, ARPA 96 NM
1 Secondary Radar, 48 NM
2 units-GPS and DGPS
1 Echo Sounder
1 Speed Log
1 Weather Fax Receiver
1 Auto Pilot
1 unit GMDSS extended packaged
1 Navtex Receiver
Integrated Internal Communication System
3 sets Portable VHF Transceiver
Ship Security Alert System
Inmarsat C Satellite
DPS 1

FIRE FIGHTING EQUIPMENT (AS PER FIFI CLASS 1)

External FIFI Pump	:	2 X 1500 M3/Hr @ 14 Bar
Fire Monitor	:	1 X 1200 M3/Hr
Foam/Water Monitor	:	1 X 1200 M3/Hr
Water curtain system	:	Entire Vsl -10L/m2/min
Spray Boom	:	6 m length with 1X2" inlet and 7X1/2" outlet spray
Fire Fighting Connection	:	1 X 4-way delivery head
Fire Hose	:	8 X 15 m hose c/w coupling and nozzle
Fire Hydrant	:	8 X 65 mm
Fireman's Outfit	:	2 sets
Dry Chemical Powder	:	2 X 5 Kg
Dry Chemical Powder	:	6 X 10 Kg
Fire Extinguisher	:	1 X 45 Ltr
Fire Extinguisher	:	4 X 9 Ltr
CO2 Extinguisher	:	2 X 9 Ltr

LIFE SAVING EQUIPMENT

Rescue Boat	:	1 X 6 persons
Liferaft	:	6 X 20 persons
Lifebuoy	:	8 sets c/w throwing apparatus
Lifejacket	:	42 sets
Breathing apparatus	:	4 sets c/w recharging compressor
Immersion suit	:	3 sets
Pyrotechnic	:	as per Class requirement
First Aid Kit	:	1 unit

OTHER FACILITIES

Hot water calorifier	:	1 X 500 ltr, 15 Kw
Sewage Plant	:	1 unit for 34 persons
Galley	:	1 unit c/w equipment and utensile
Mess & Conference Room	:	1 Room c/w entertainment equipment
Laundry Room	:	1 Room c/w 10 kgs of washer and dryer

Information on the specification are approximate only. They are subject to final changes