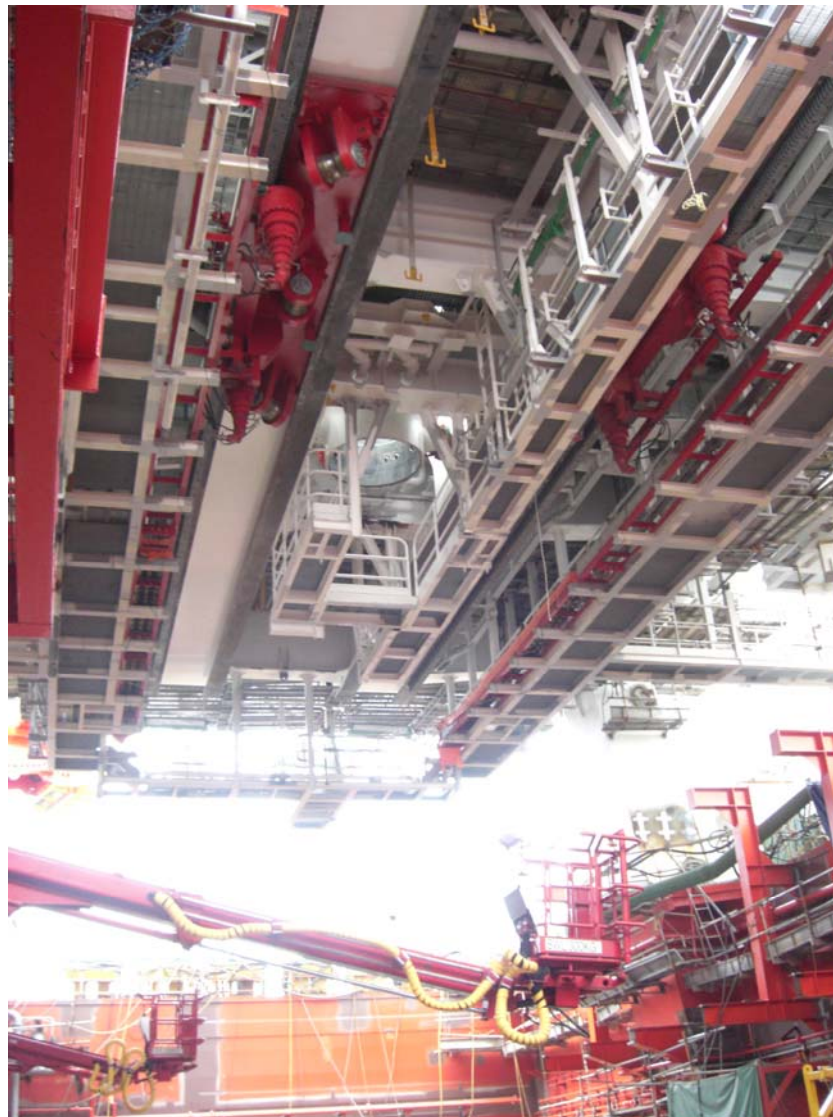
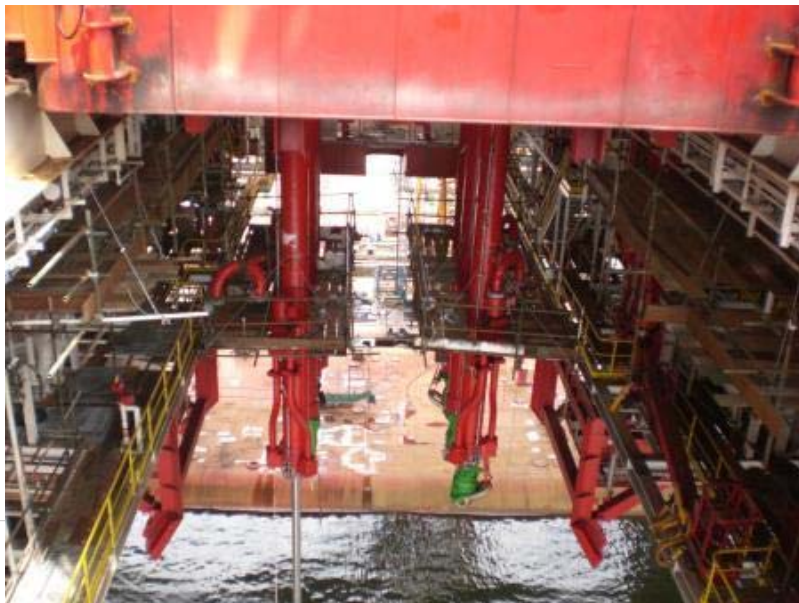


# Direct Acting Tensioner



Drawings

6-March-2008

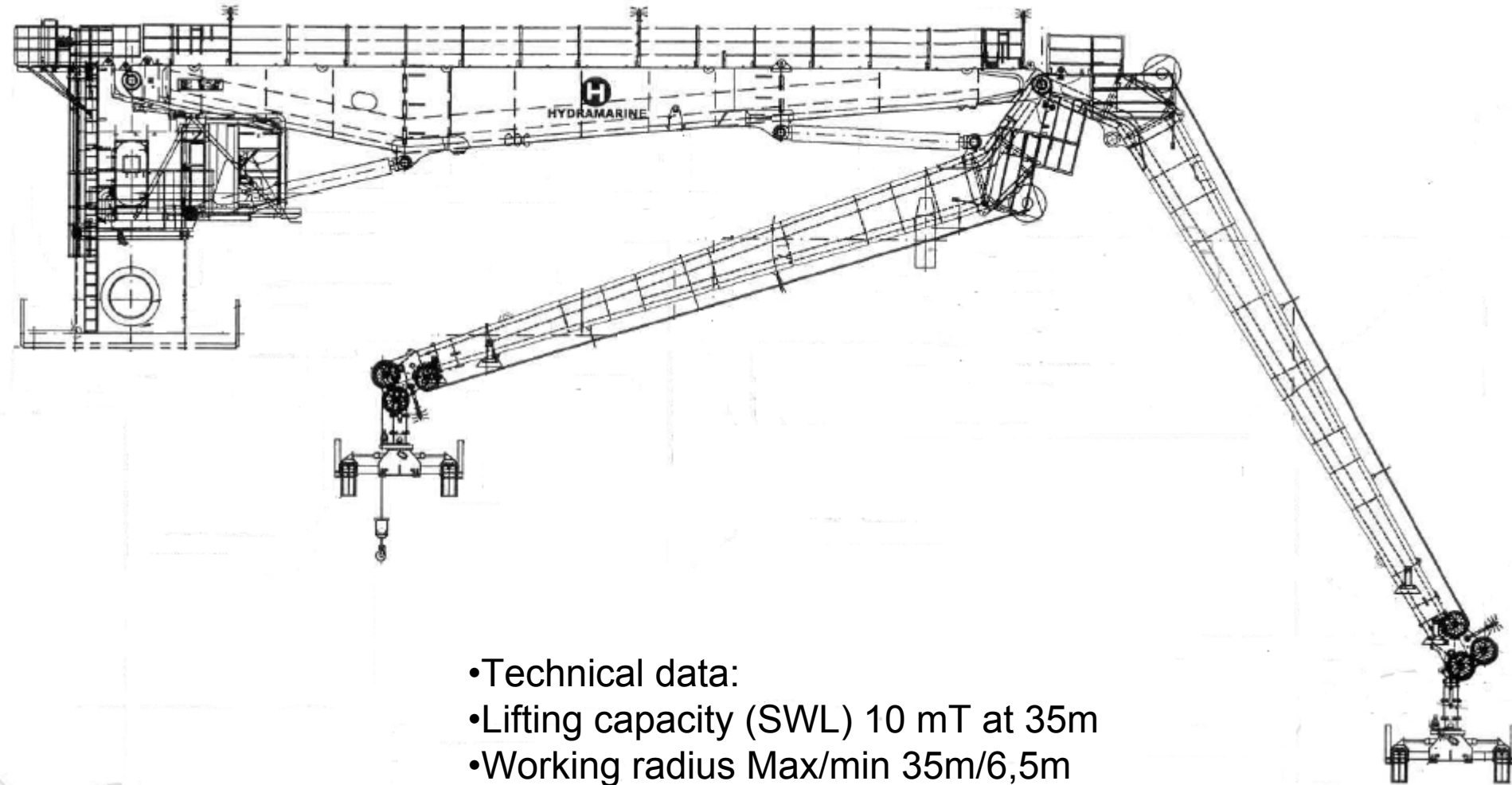
© 2006 Aker Kvaerner

Slide 41

**AKER KVÆRNER**

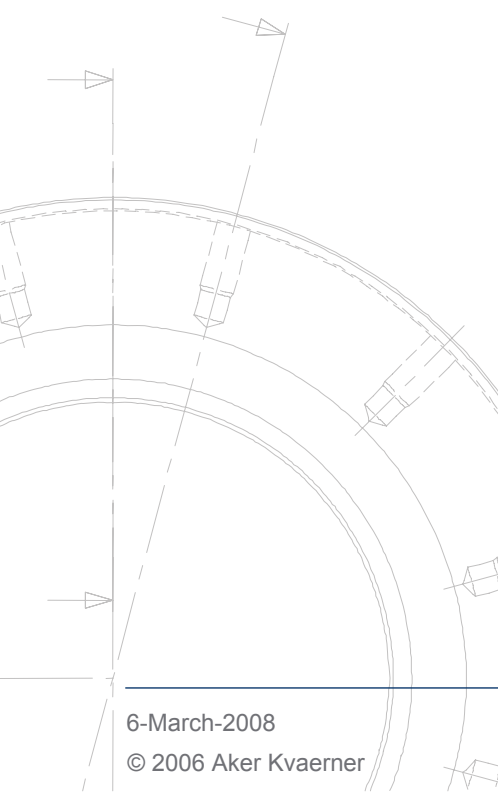
part of the Aker group

# Pipe deck pipehandler



- Technical data:
- Lifting capacity (SWL) 10 mT at 35m
- Working radius Max/min 35m/6,5m

# Pipe deck pipehandler





# Tubular feeding machines

- Riser TFM Technical data:
  - SWL: 40mt
  - Riser length: 75 ft.
- Handles Riser, slip joint.
- Pipe TFM Technical data:
  - SWL: 15mt
  - pipe length: 45 ft.
- Casing TFM Technical data:
  - SWL: 5mt
  - Casing length: 45 ft.



# Tubular feeding machines



# Tubular feeding machines



# Rotary table

- 60 1/2"
- Static load capacity 1000tons
- Split adapter bushing 60 1/2"-49 1/2"
- Split adapter bushing 49 1/2"-37 1/2"
- 20 rpm



Drawings



# Drawworks



## Drawings



# HP Mud pumps



Model TPK 7 1/2" x 14" /2200 CL - 7500 PSI



[Drawings](#)

# Testing and Commissioning

## ■ Level 1

- FAT of all equipment according to standard procedure with the actual control system included. Ref. fig. 1.

