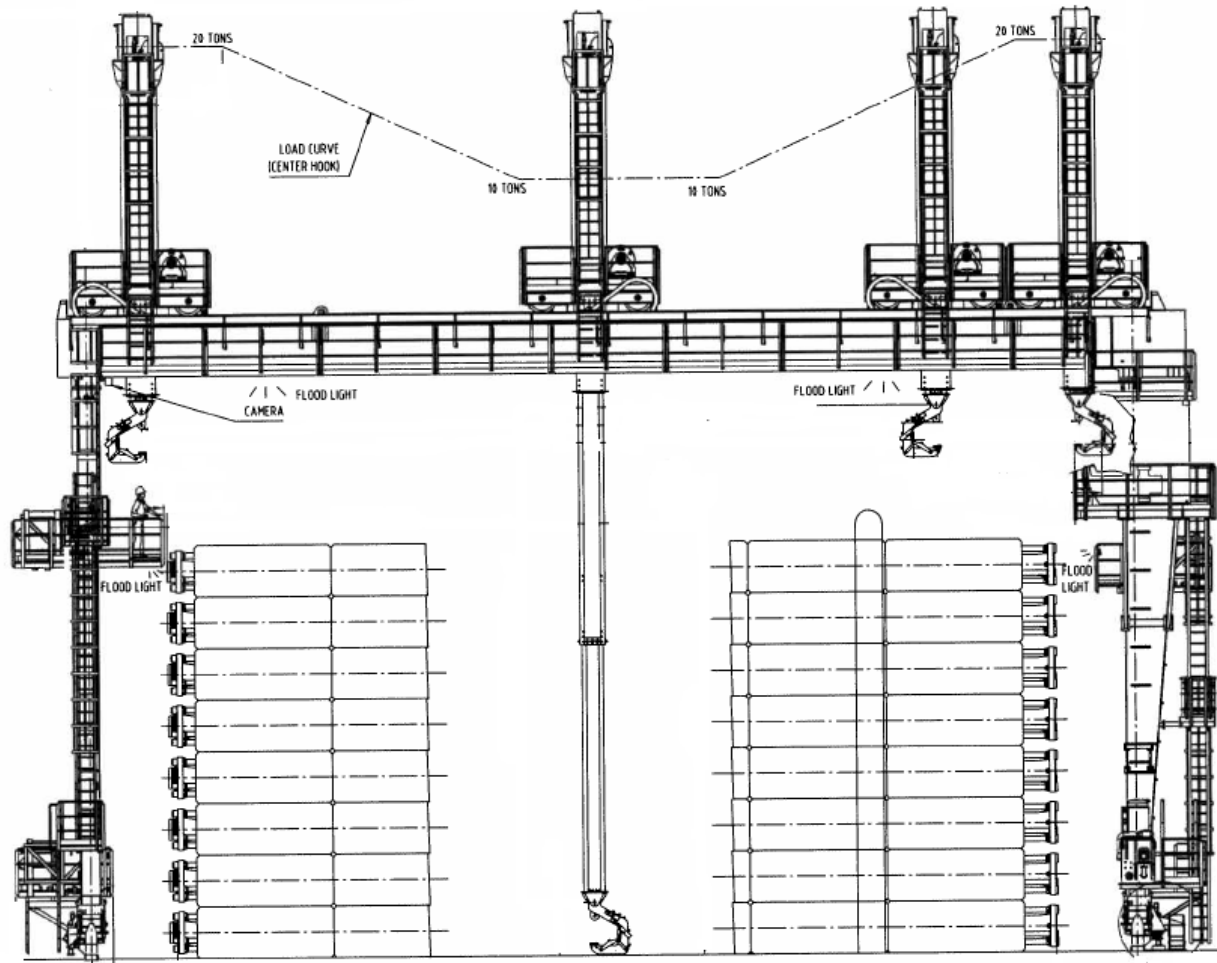


# Riser gantry crane



## Technical data

- Lifting capacity SWL 2x20 mT
- Weight 135 mT

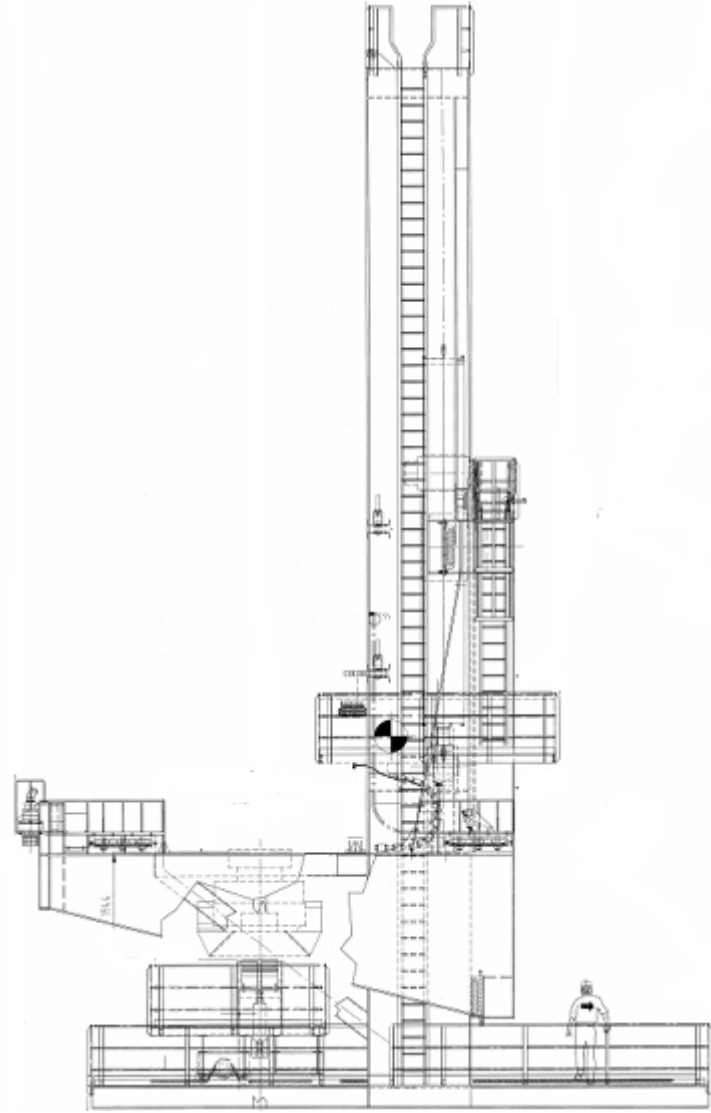


## Drawings

# BOP transporter

- Technical data:
  - Capacity: 520 mT
  - Rail span: 8,0 m
  - Travel speed: 1 m/min.
- Hydraulic operated
- Weight 220 mT

Drawings



**AKER KVAERNER™**

part of the Aker group

# BOP transporter





# BOP Crane

SWL 2 x 75mT



[Drawings](#)



**AKER KVÆRNER™**

6-March-2008

© 2006 Aker Kvaerner

Slide 34

part of the Aker group

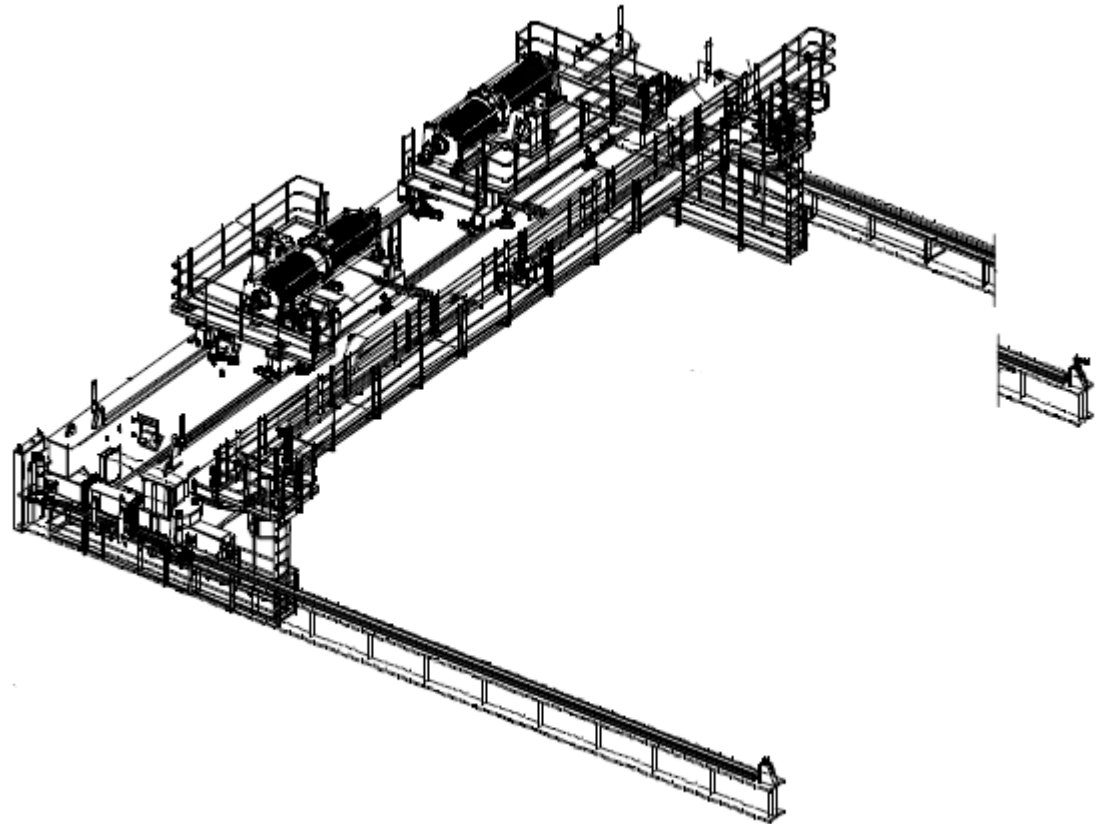
# Under hull guide



Drawings

# X-mas tree crane

- Technical data:
  - Lifting capacity: 2 x 100 mT
  - Lifting height: 23m
  - Lifting speed: 2-4 m/min
- Including HPU



[Drawings](#)



# HPU



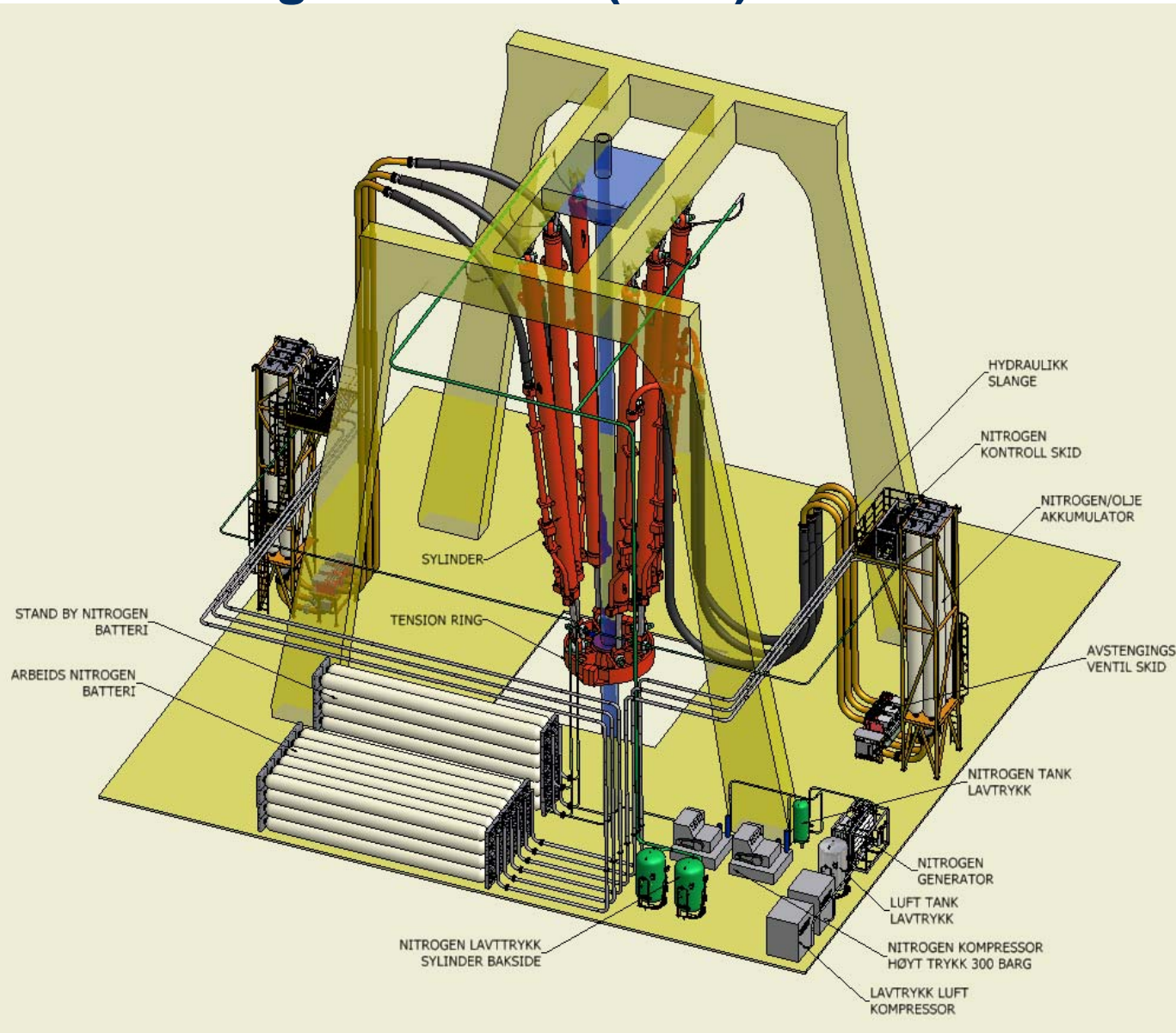
## ■ Technical data

- Type Submerged pumps
- Capacity 6x240 l/min (6x63 gal)
- Motors 6x94kW
- Classification Marine for safe a
- Filters Return oil and drain
- Cooler Included
- Circulation pump Included
- Indicators Level with stop on lo
- Control Local panel



Drawings

# Direct Acting Tensioner (DAT)



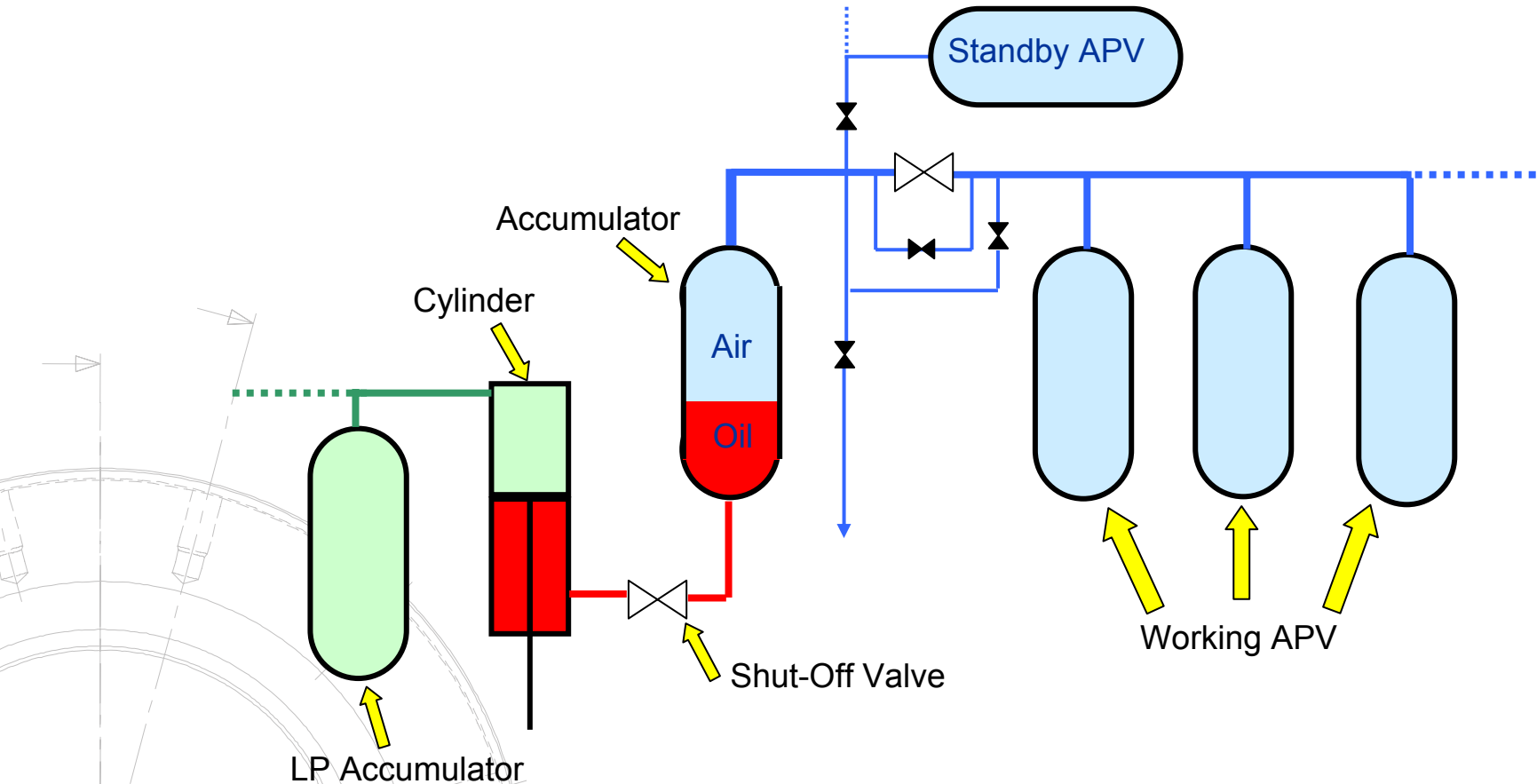
**AKER KVÆRNER**™



# Direct Acting Tensioners ( DAT)



## Block diagram/ function



# Direct Acting Tensioner (DAT)

- Technical data
  - Tensioning capacity 5000 Kips
  - 6 Direct Acting Cylinders
  - Tripsaver Trolley included

