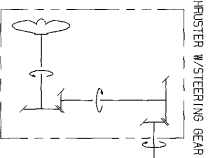
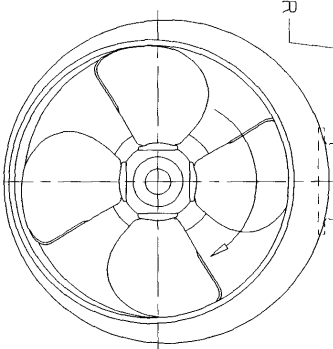
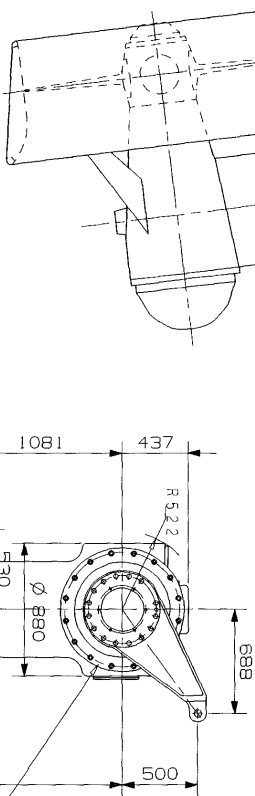


# LOWER POSITION LOCKING CYLINDER



ROTATION DIRECTIONS

THRUSTER W/STEERING GEAR

16.51



# Rolls-Royce

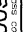
MALSKISSE  
DIMENSION SKETCH  
TCNS 73/50-180 7° TILT

MALSKISSE

DIMENSION SKETCH  
TCNS 73/50-180 7° TILT

**Rolls-Royce Marine AS, dep.: Propulsion - Ulstein**  
N-6065 Ulsteinvik, Norway Tel.: +47-700-14000

This drawing is the property of RALLS-FOYOC, Inc., and must not be copied or the contents thereof or any information received in connection therewith must not be imparted to any unauthorized third party. It must not be used for any other project than for which it was originally ordered. The receipt of the drawing implies that the conditions mentioned herein are accepted.

Scale 1:25	Drawn GK	17.06.2006
	Checkd. Appr. <i>[Signature]</i>	
Class code 60001	Sheet 1 of 1	
Drawing Number 217811	Rev. -	
Issued on 21.6.05	Mass kg -	
Format A2		