

NOTES

1. BOTH SIDE ARE SYMMETRIC EXCEPT AS SHOWN.

2. ALL SECTIONS ARE SHOWN LOOKING FORWARD EXCEPT AS NOTED.

3. ALL ELEVATIONS ARE SHOWN LOOKING PORT SIDE EXCEPT AS NOTED.

4. WELD BEAD TO BE CHIPPED IN WAY OF NO SCALLOP OF A CROSS THE WELDING LINE.

5. WELDING LEG LENGTH IS (6.0). EXCEPT AS SHOWN.

6. NO MARKED STEEL TO BE GRADE "A".

TO BE HIGHER TENSIL STEEL.

ERECTION SEQUENCE

B904

B903

B901+B902

BLOCK WEIGHT (TON)

P

C

S

TOTAL (14) SHEETS WITH A COVER

SHIP NO.

EN5430

SHIP TYPE

ENABOL 5430 BHP TOWBOAT

TEL.

APPROVED

CHECKED

CHECKED

DRAWN

BLOCK NAME

B903 BLOCK

(FR.29+300 ~ FR35)

GMB Inc

586-1, Seonam-dong Nam-gu, Ulsan, Korea

SCALE

DWG NO.

DATE

B903-01-TITLE

REV.NO.

KR3-ASSY

DATE	REV NO	DESCRIPTION	SHOP	PAGE	APPROVAL		
					DRAW	CHECK	APPR
	<div></div>	ISSUED TO YARD					
<div>NOTED</div>							
<div>ERECTION</div>		O, X	P.E BLOCK	BLOCK COMPOSITION		BASE	
UNIT ERECT						NOMAL	
PRE ERECT							
ERECT							

A3 (420x297)

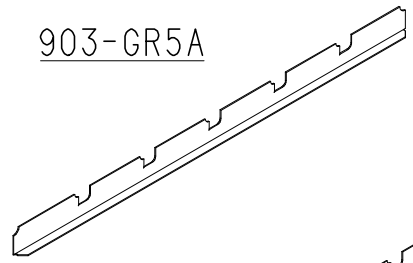
B903 BLOCK PROCESS

GMB

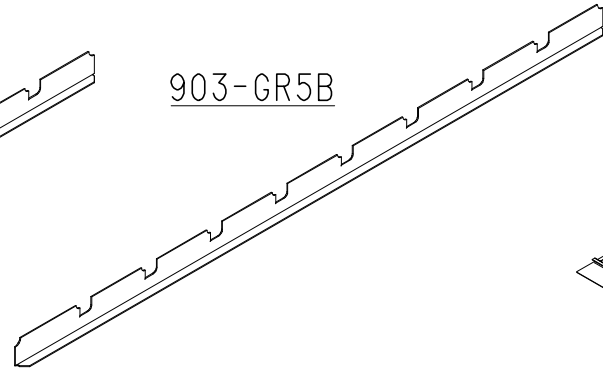
BLOCK NO.
PAGE

B903
/

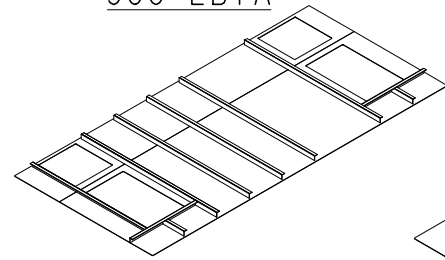
903-GR5A



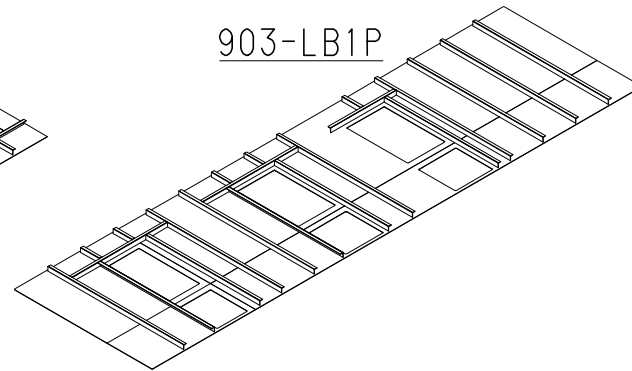
903-GR5B



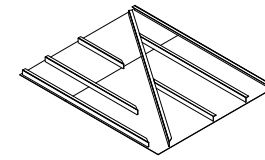
903-LB1A



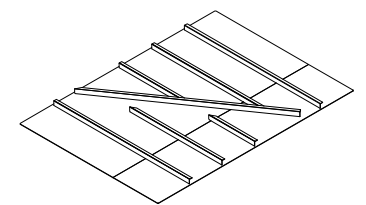
903-LB1P



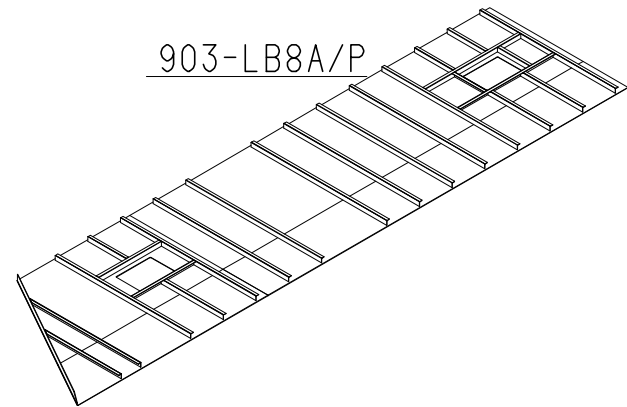
903-LB1B



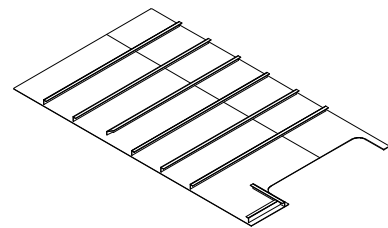
903-LB3A



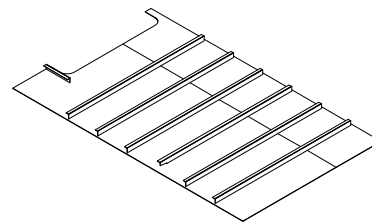
903-LB8A/P



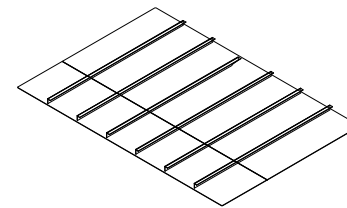
903-TB30A



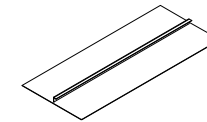
903-TB30P



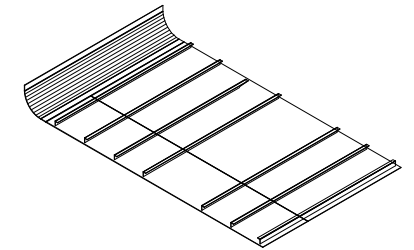
903-TB32A
903-TB35P



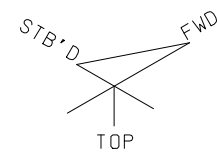
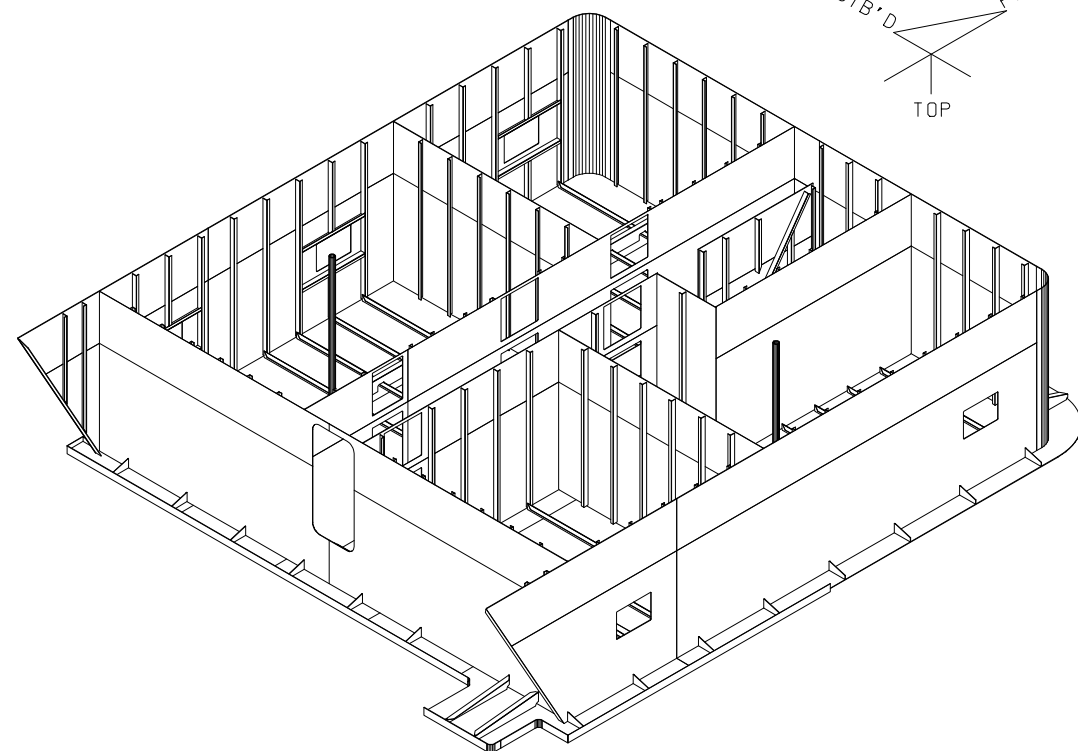
903-TB33A



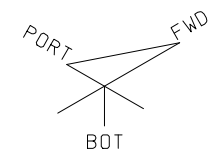
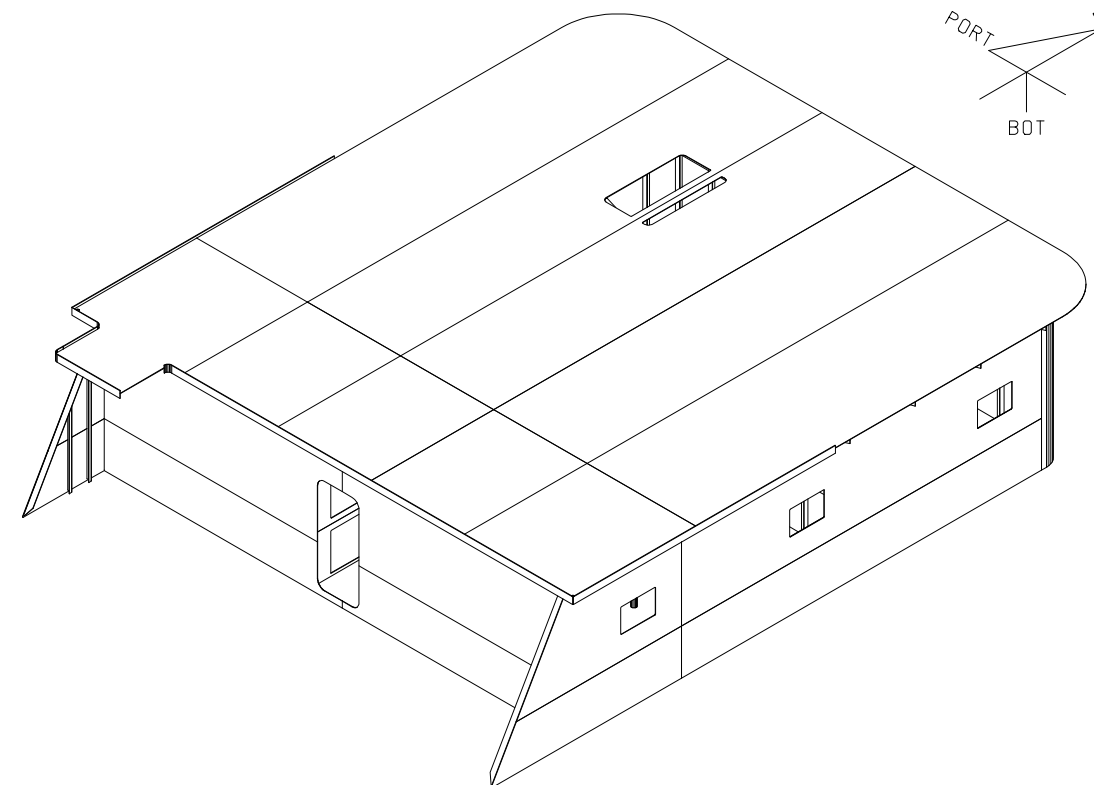
903-TB33A/P



903-DK1 ASS'Y



B903 BLOCK



903 BLK ANALYSIS

- 903-1
 - 1-1 DK1/G (1) __PG.0
 - 1
 - 2 GR5A/S (1) __PG.0
 - 2 GR5B/S (1) __PG.0
 - 2 GR5C/S (1) __PG.0
 - 2 GR5P/S (1) __PG.0
 - 2 GR5Q/S (1) __PG.0
 - 2 LB1A/S (1) __PG.0
 - 2 LB1B/S (1) __PG.0
 - 2 LB1P/S (1) __PG.0
 - 2 LB3A/S (1) __PG.0
 - 2 LB8A/S (1) __PG.0
 - 2 LB8P/S (1) __PG.0
 - 2 TB30A/S (1) __PG.0
 - 2 TB30P/S (1) __PG.0
 - 2 TB32A/S (1) __PG.0
 - 2 TB33A/S (1) __PG.0
 - 2 TB33P/S (1) __PG.0
 - 2 TB35A/S (1) __PG.0
 - 2 TB35P/S (1) __PG.0

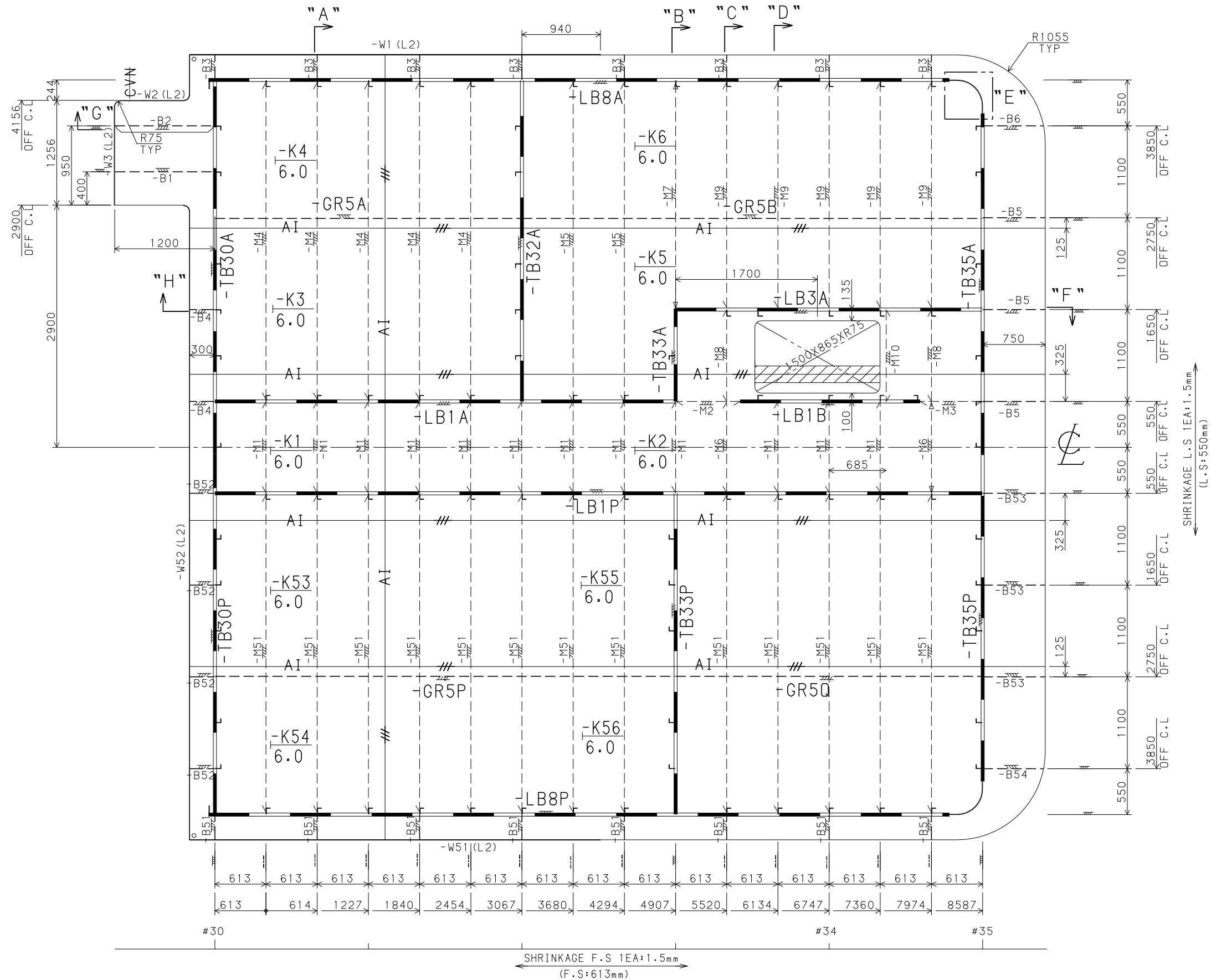
ASSEMBLY_NO	WEIGHT (Kg)	COG_X (M)	COG_Y (M)	COG_Z (M)	ASSY_AREA (M ²) w)	
903	14.745,	29.447,	0.070,	7.470,	542.551, (ASS'Y only)	
DK1	14.745,	29.447,	0.070,	7.470,	542.551, (203.224)
GR5A	0.059,	26.685,	2.746,	8.106,	1.893, (1.893)
GR5B	0.089,	31.287,	2.746,	8.106,	2.837, (2.837)
GR5C	0.000,	0.000,	0.000,	0.000,	0.013, (0.013)
GR5P	0.089,	27.607,	-2.746,	8.106,	2.857, (2.857)
GR5Q	0.059,	32.195,	-2.746,	8.106,	1.892, (1.892)
LB1A	0.580,	27.490,	0.558,	7.012,	23.617, (23.617)
LB1B	0.297,	32.221,	0.561,	6.945,	11.208, (11.208)
LB1P	1.007,	29.489,	-0.558,	7.003,	40.564, (40.564)
LB3A	0.455,	32.205,	1.639,	6.952,	19.107, (19.107)
LB8A	1.396,	28.829,	4.388,	6.921,	49.357, (49.357)
LB8P	1.386,	28.787,	-4.387,	6.918,	48.783, (48.783)
TB30A	0.599,	24.845,	2.313,	6.979,	21.600, (21.600)
TB30P	0.590,	24.845,	-2.348,	6.968,	21.356, (21.356)
TB32A	0.478,	28.509,	2.471,	6.951,	19.996, (19.996)
TB33A	0.128,	30.352,	1.103,	6.953,	5.785, (5.785)
TB33P	0.478,	30.349,	-2.469,	6.951,	19.996, (19.996)
TB35A	0.678,	34.017,	2.242,	6.952,	24.623, (24.623)
TB35P	0.646,	34.018,	-2.375,	6.952,	23.843, (23.843)

0-2 DK PLAN

(8250 A/B)

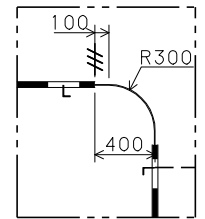
903-DK1

-M1~M10, M51: 100X75X6.0 U.A
-W1~W3, W51, W52: 125X6.0 F.B
///MARK: YARD CONSTRUCTION



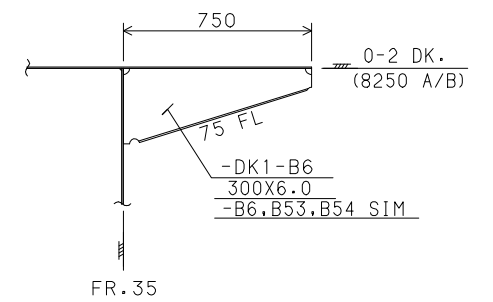
GMB	BLOCK NO.	
	PAGE	/

"E" DET.

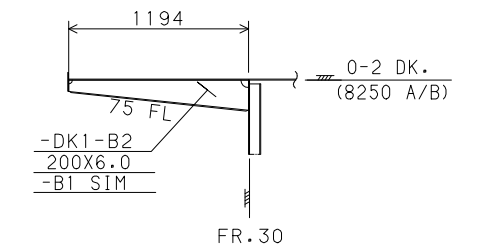


"F" ELEV.

(SCALE: 1/30)

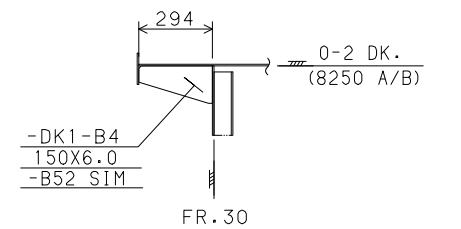


"G" ELEV.

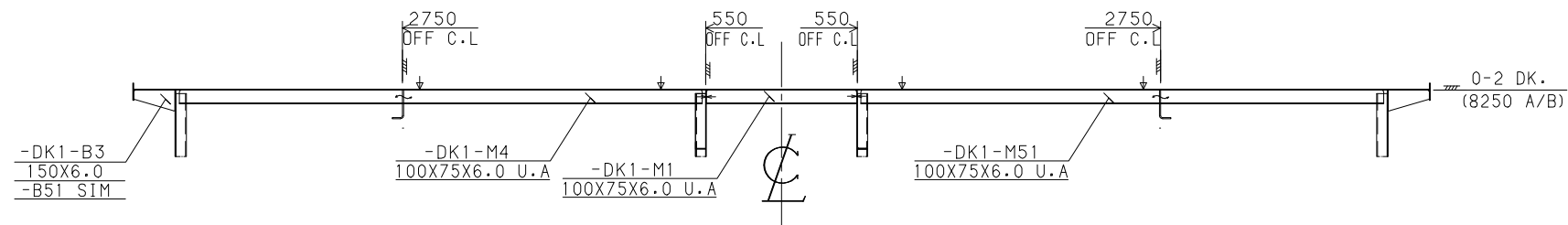


"H" ELEV.

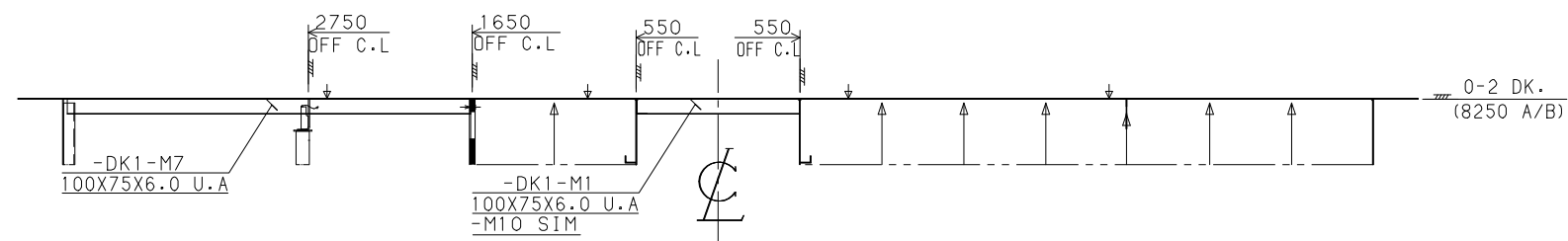
(SCALE: 1/30)



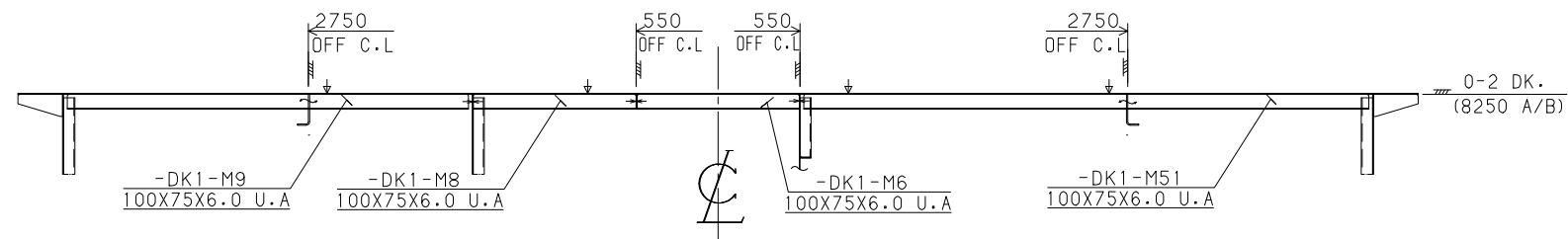
"A" SEC



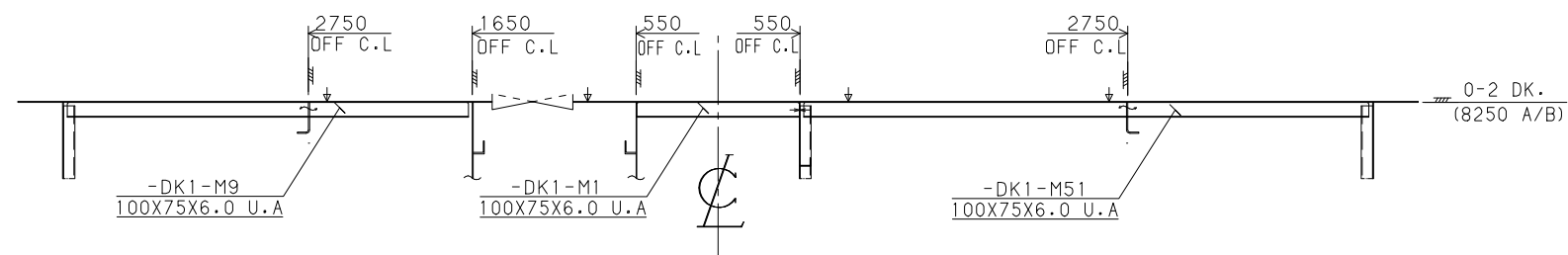
"B" SEC



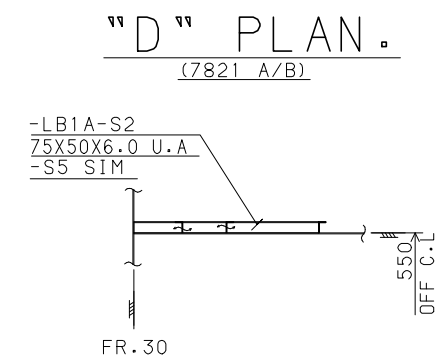
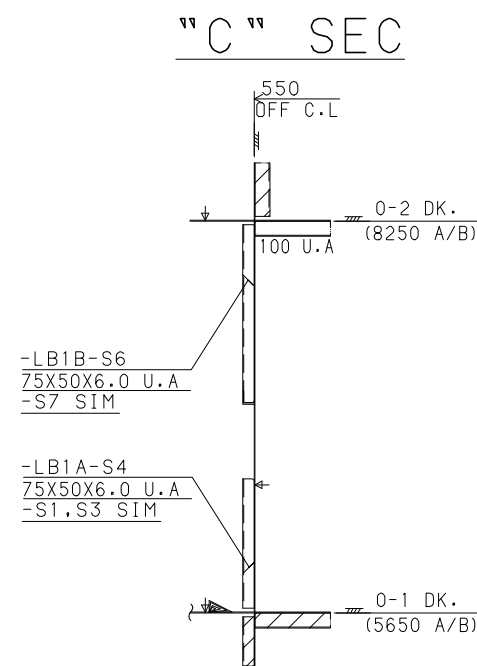
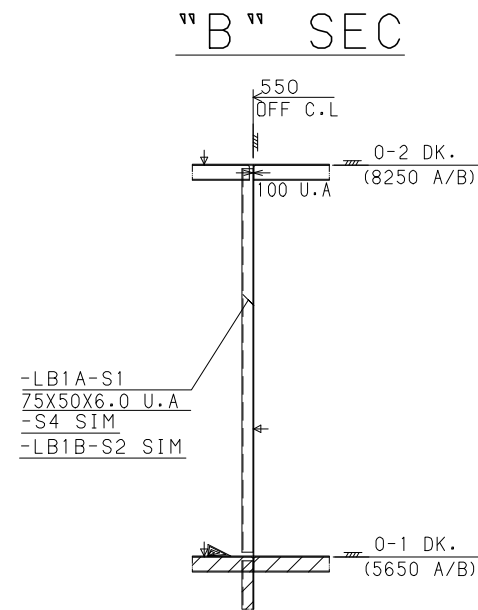
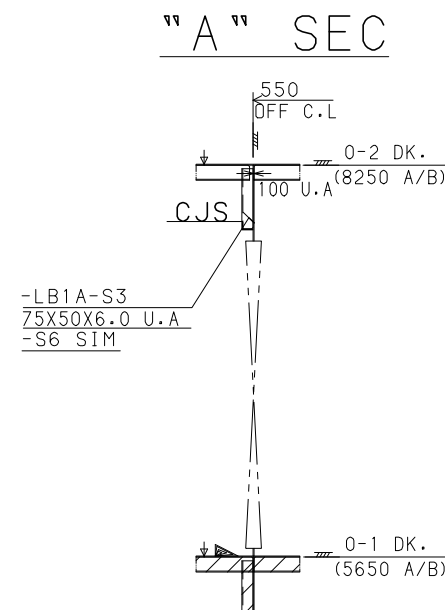
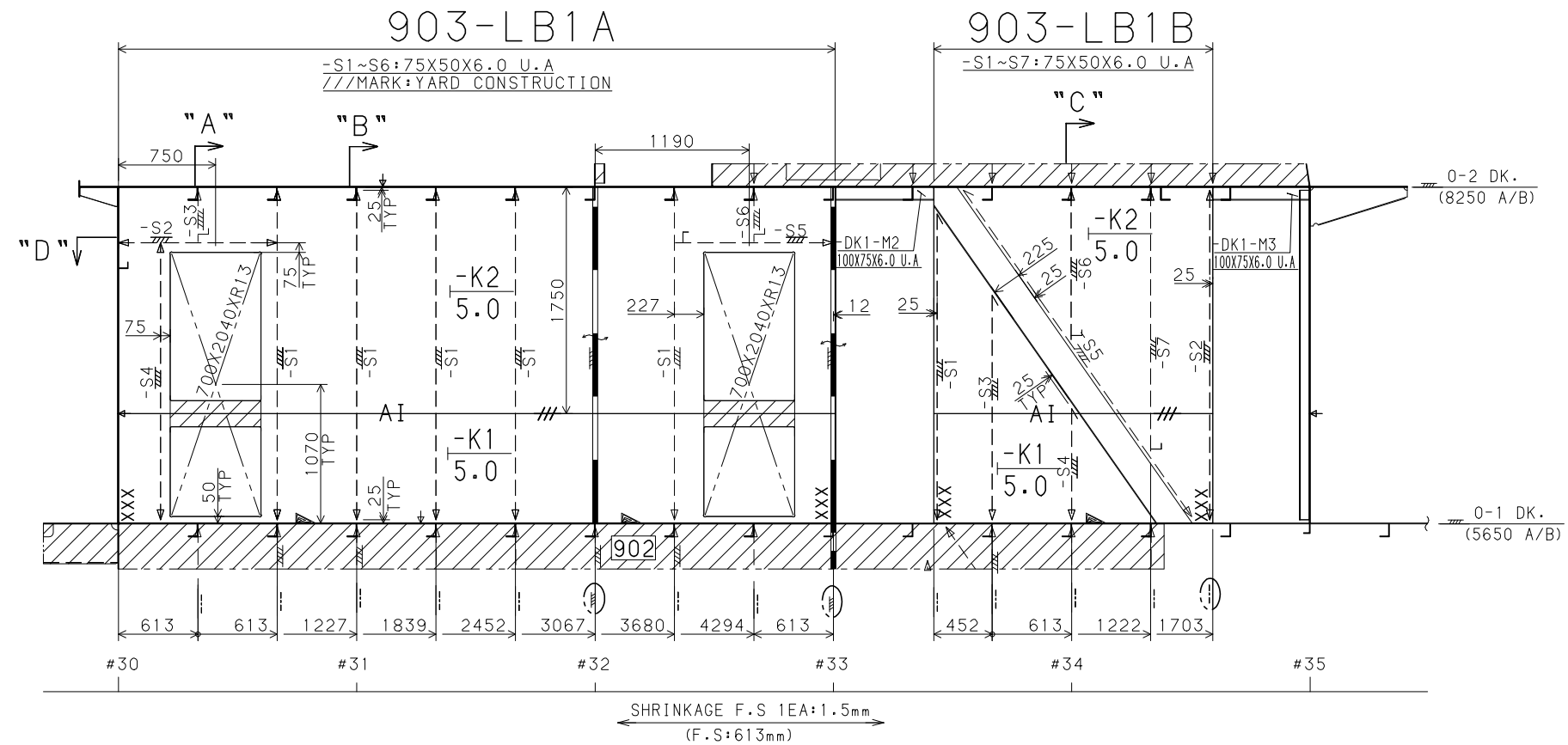
"C" SEC



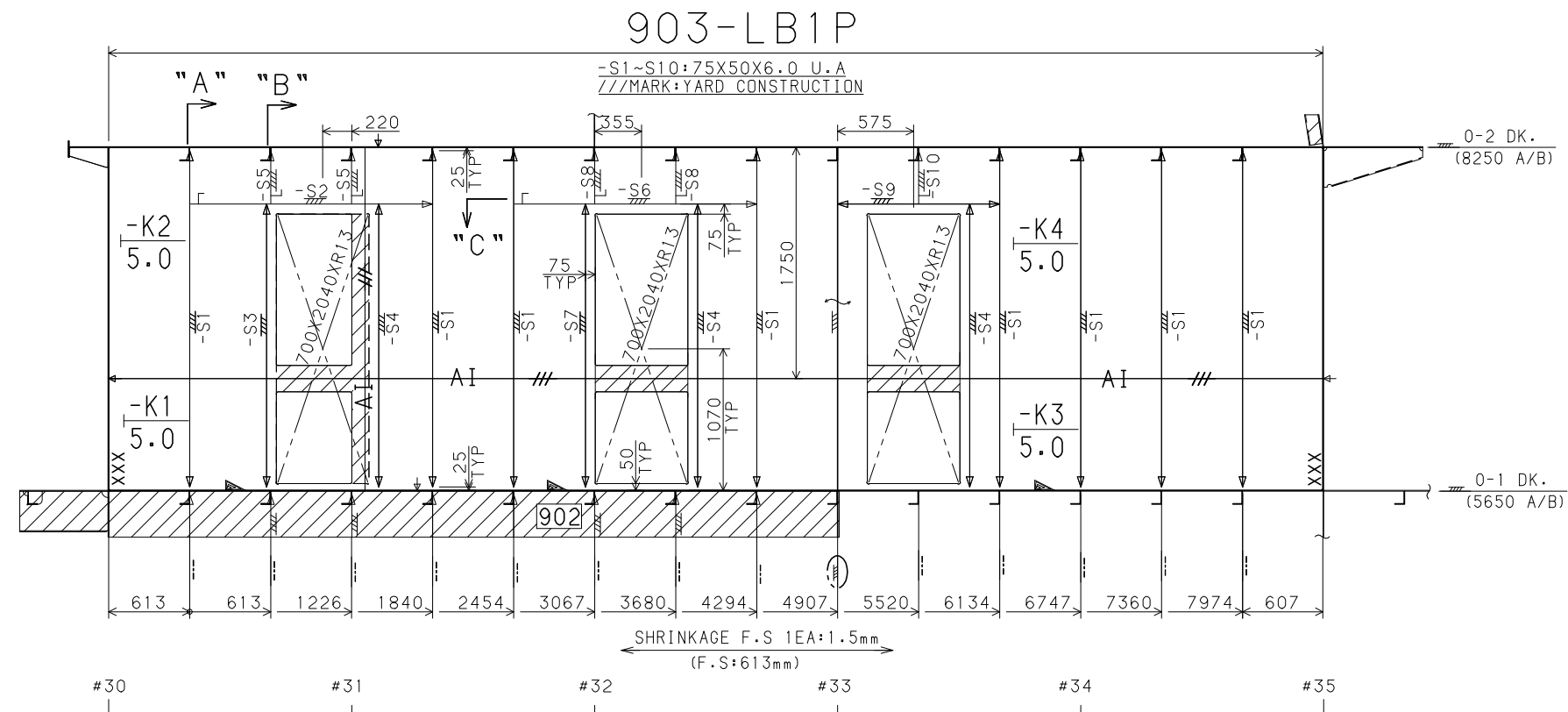
"D" SEC



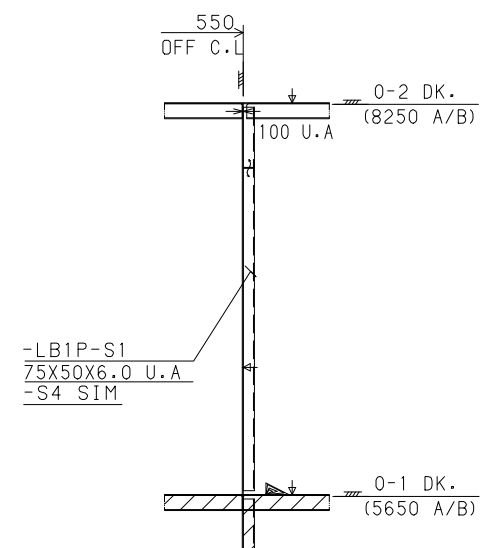
550 OFF C/L ELEV (P)



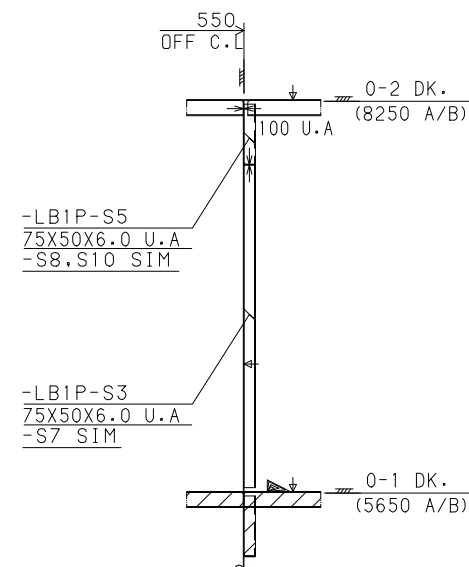
550 OFF C/L ELEV (S)



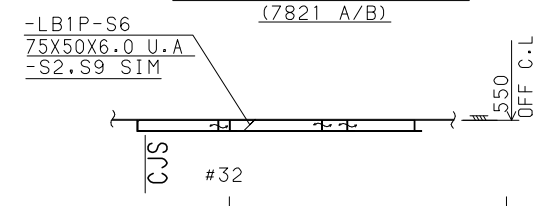
"A" SEC



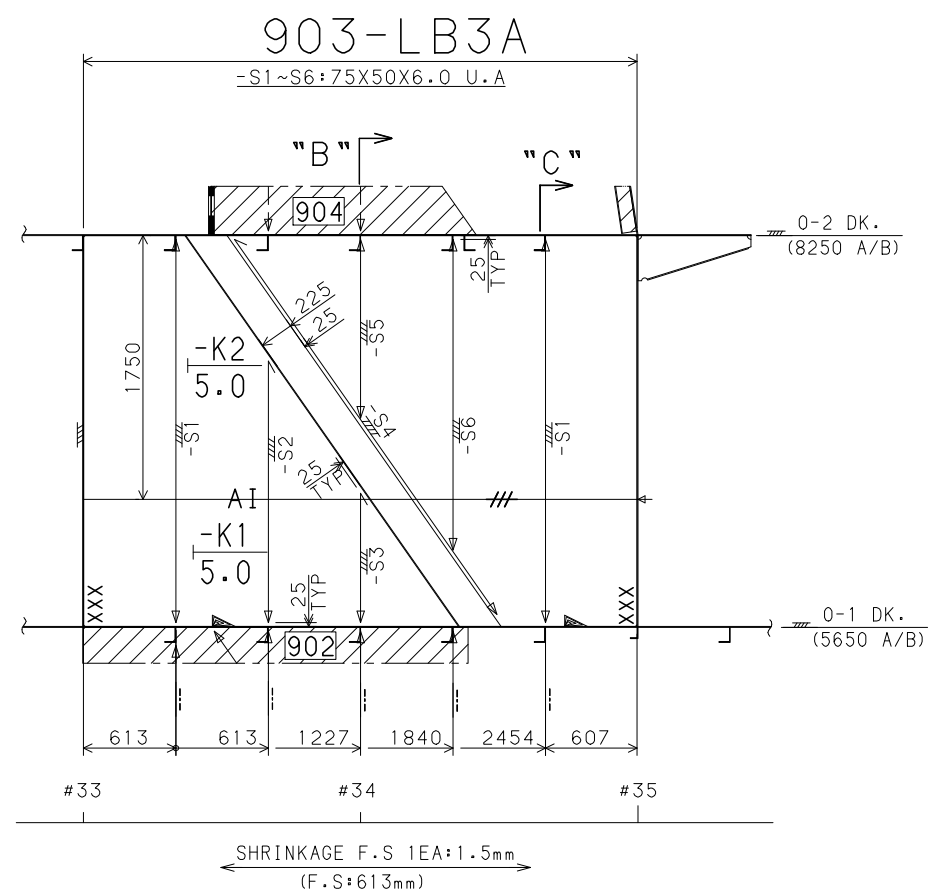
"B" SEC



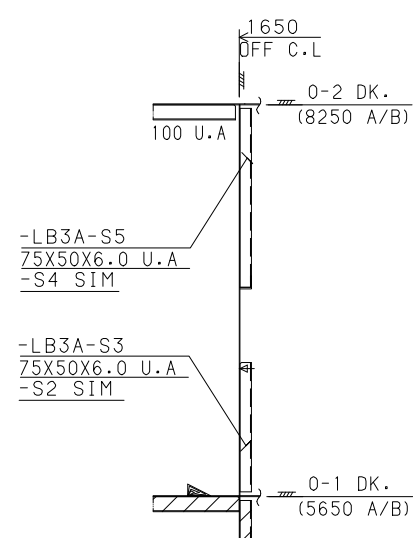
"C" PLAN.



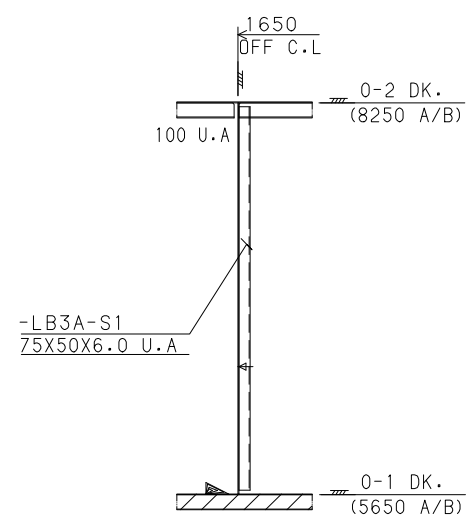
1650 OFF C/L ELEV (P)



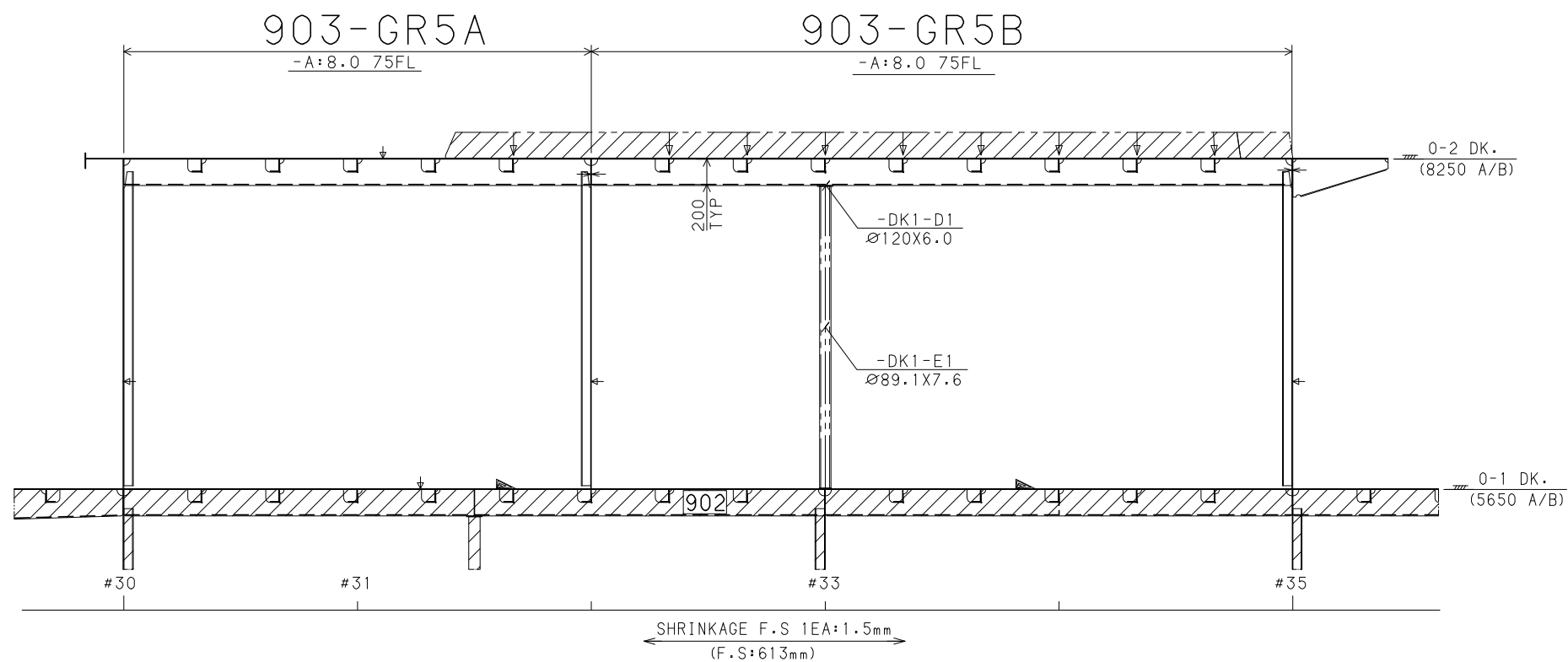
"A" SEC



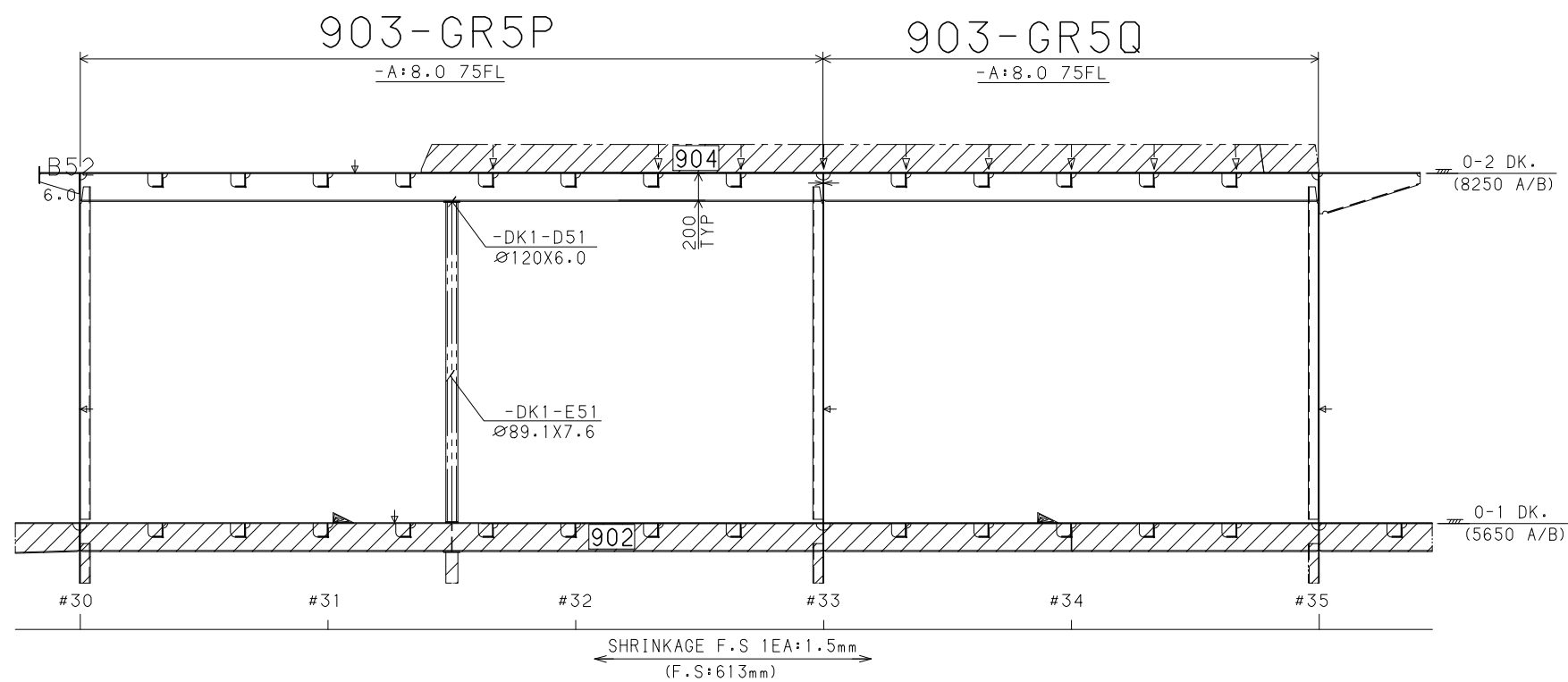
"B" SEC



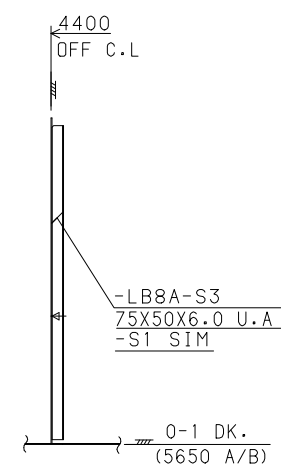
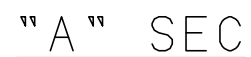
2750 OFF C/L ELEV (P)



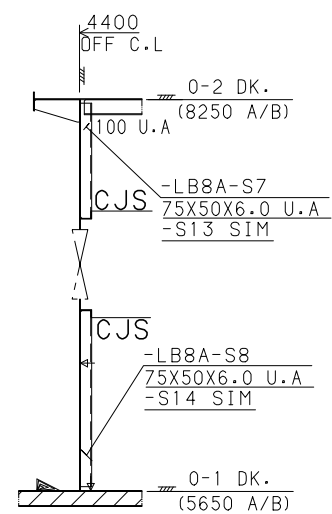
2750 OFF C/L ELEV (S)



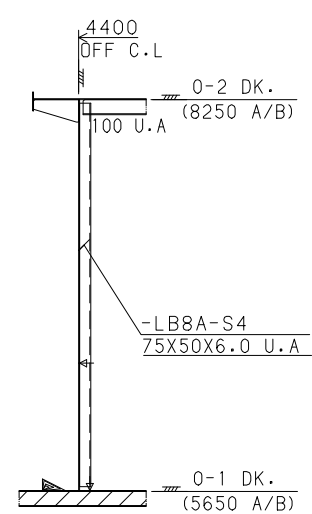
903-LB8A



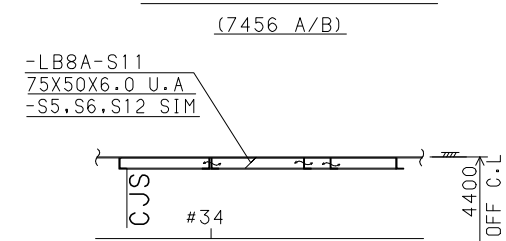
"B" SEC



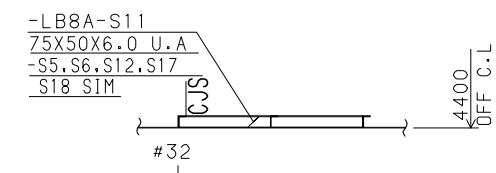
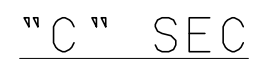
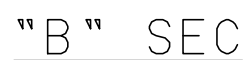
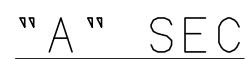
"C" SEC



“D” PLAN.

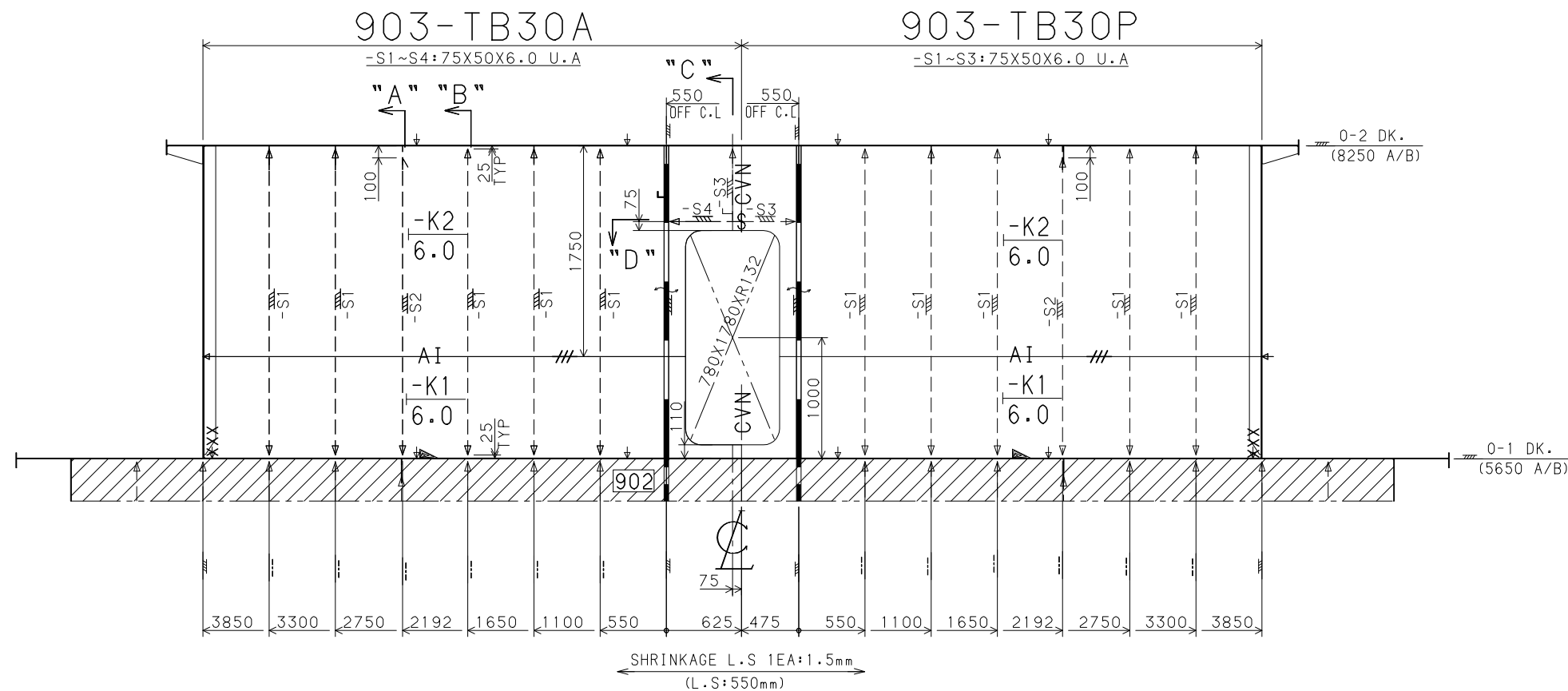


903-LB8P

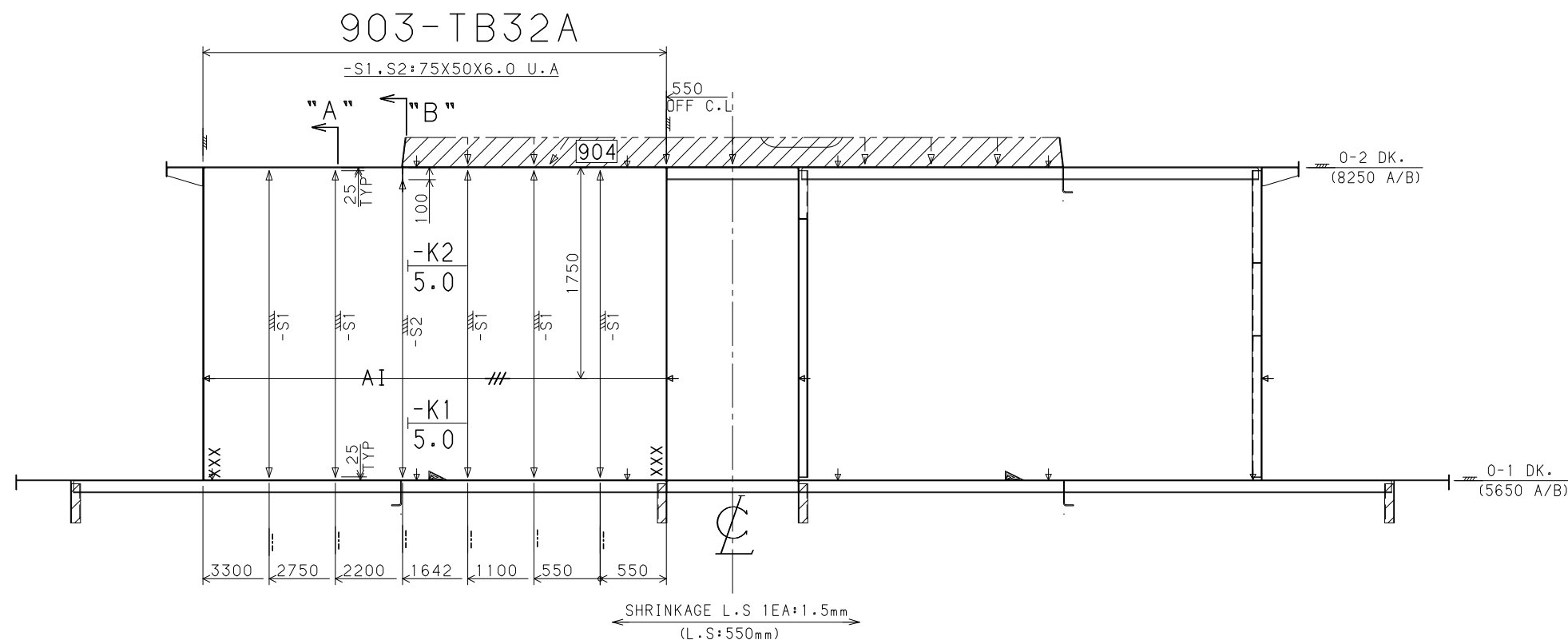


FR. 30 SEC

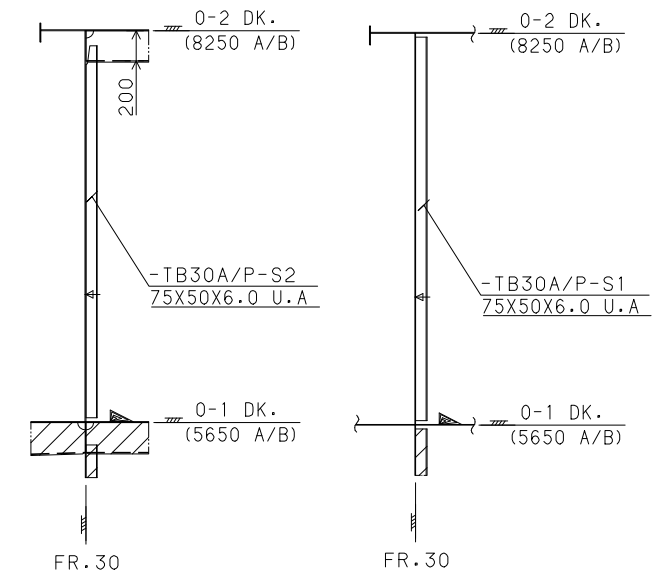
THE STB'D IS SIM. TO PORT (EX. AS SHOWN)



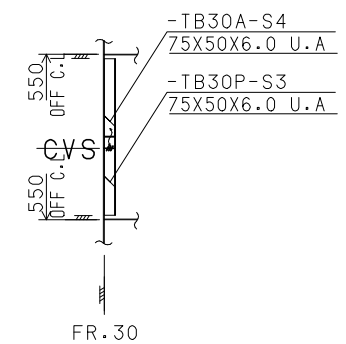
FR. 32 SEC



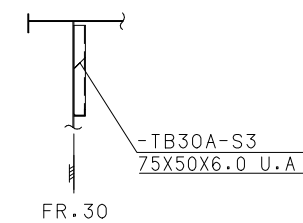
"A" ELEV. "B" ELEV.



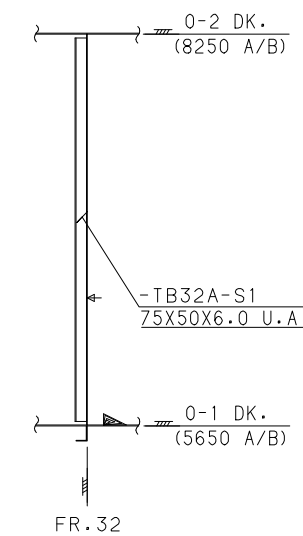
"D" PLAN.



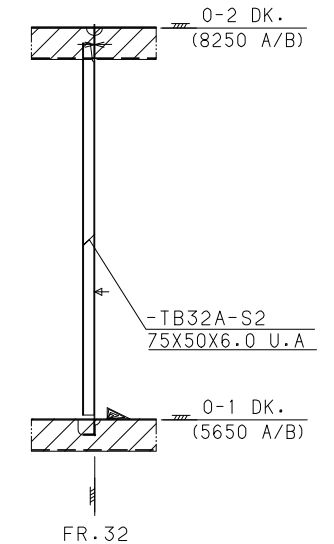
"C" ELEV.



"A" ELEV.

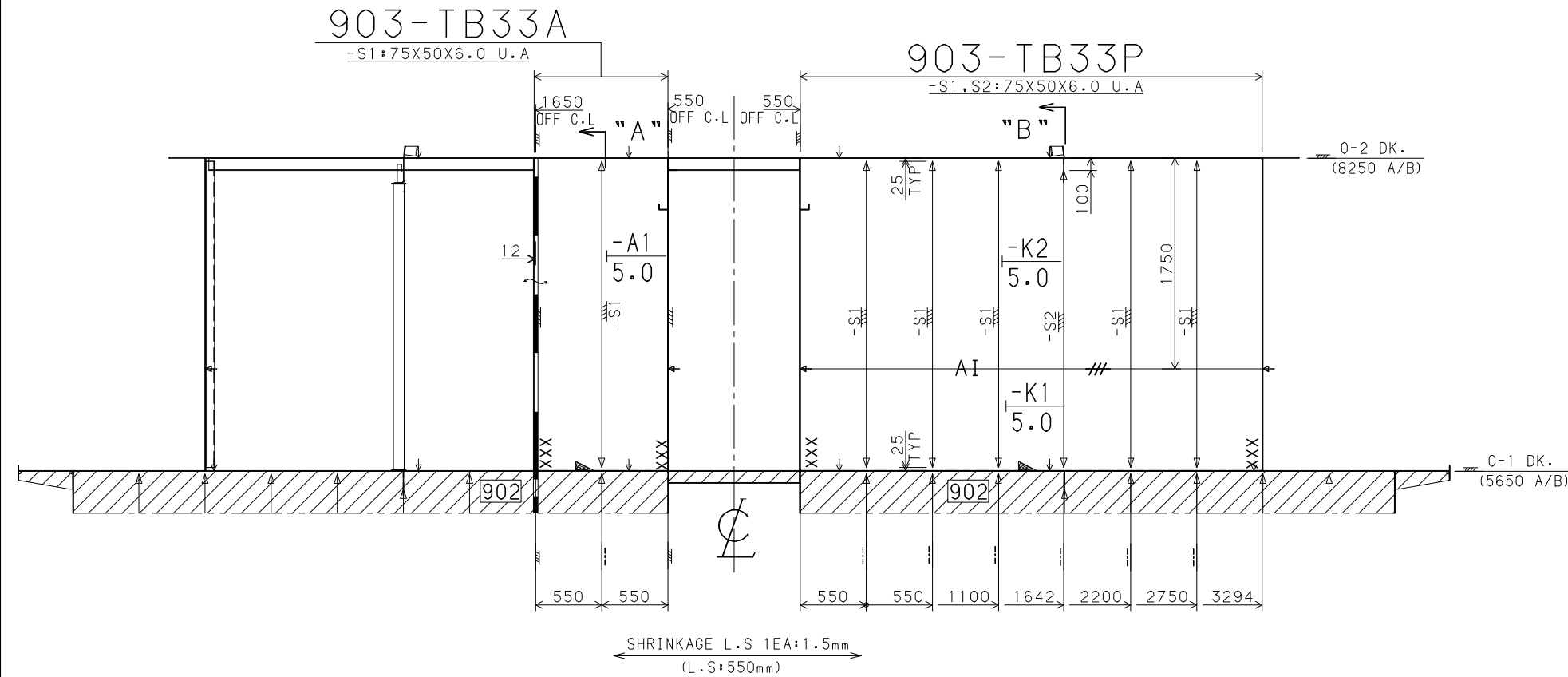


"B" ELEV.

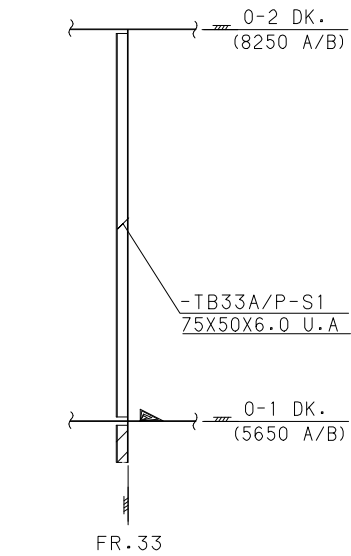


FR. 33 SEC

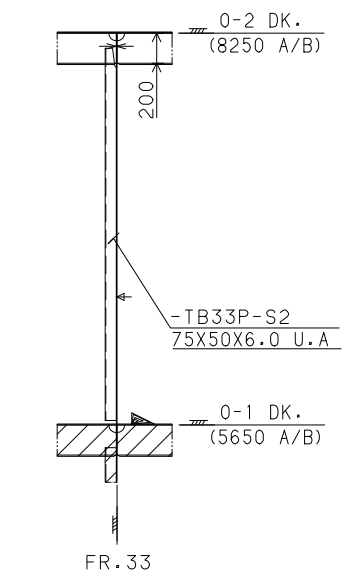
GMB	BLOCK NO.	
	PAGE	/



"A" ELEV.

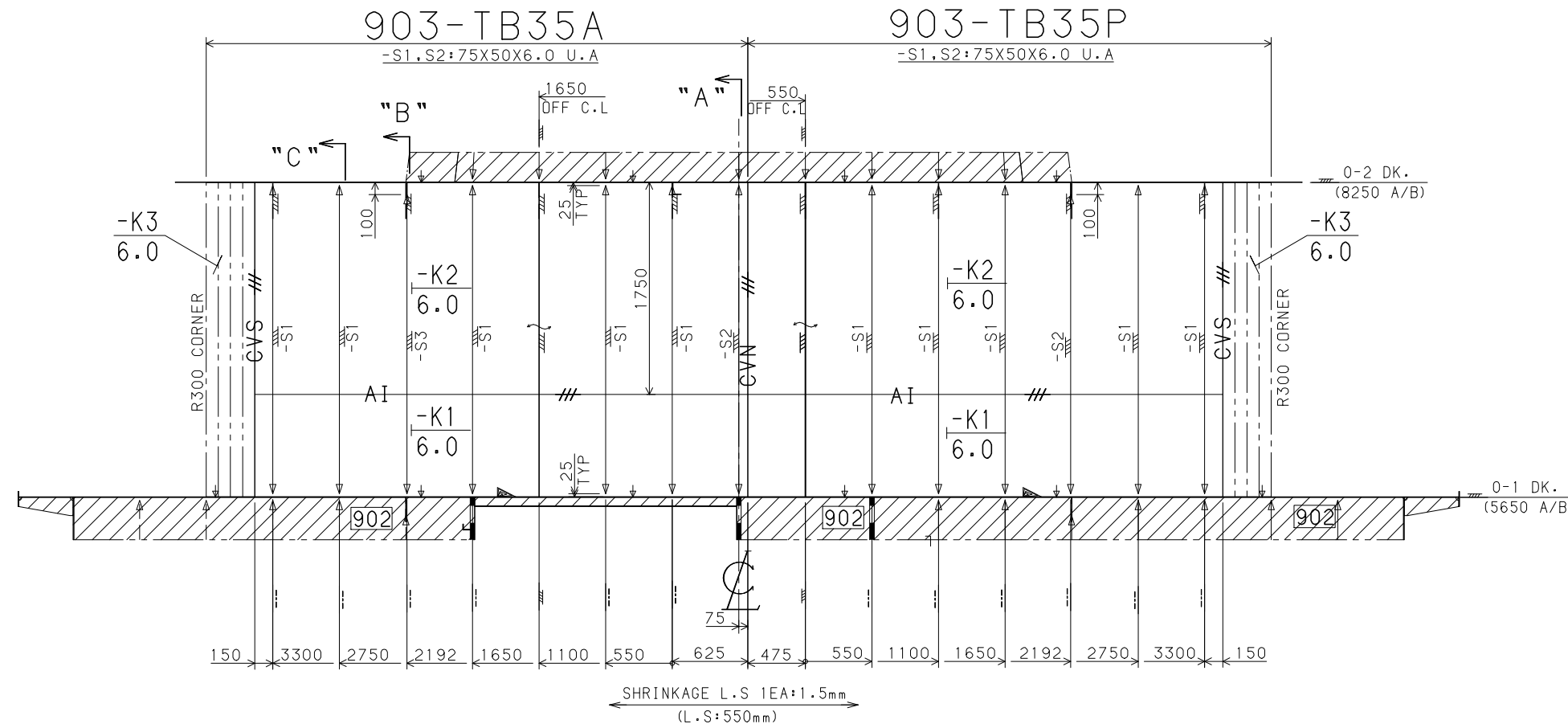


"B" ELEV.

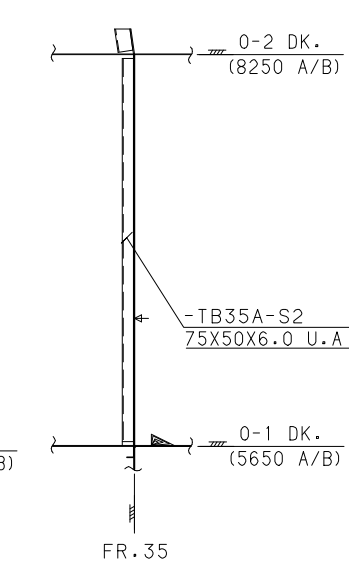


FR. 35 SEC

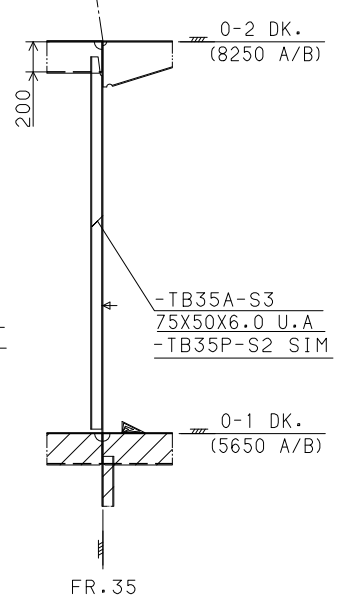
THE STB'D IS SIM. TO PORT (EX. AS SHOWN)



"A" ELEV.



"B" ELEV.



"C" ELEV.

