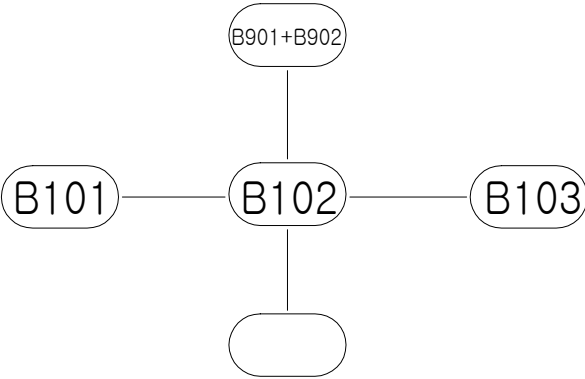


NOTES

1. BOTH SIDE ARE SYMMETRIC EXCEPT AS SHOWN.
2. ALL SECTIONS ARE SHOWN LOOKING FORWARD EXCEPT AS NOTED.
3. ALL ELEVATIONS ARE SHOWN LOOKING PORT SIDE EXCEPT AS NOTED.
4. WELD BEAD TO BE CHIPPED IN WAY OF NO SCALLOP OF A CROSS THE WELDING LINE.
5. WELDING LEG LENGTH IS (—————). EXCEPT AS SHOWN.
6. NO MARKED STEEL TO BE GRADE "A".
TO BE HIGHER TENSIL STEEL.

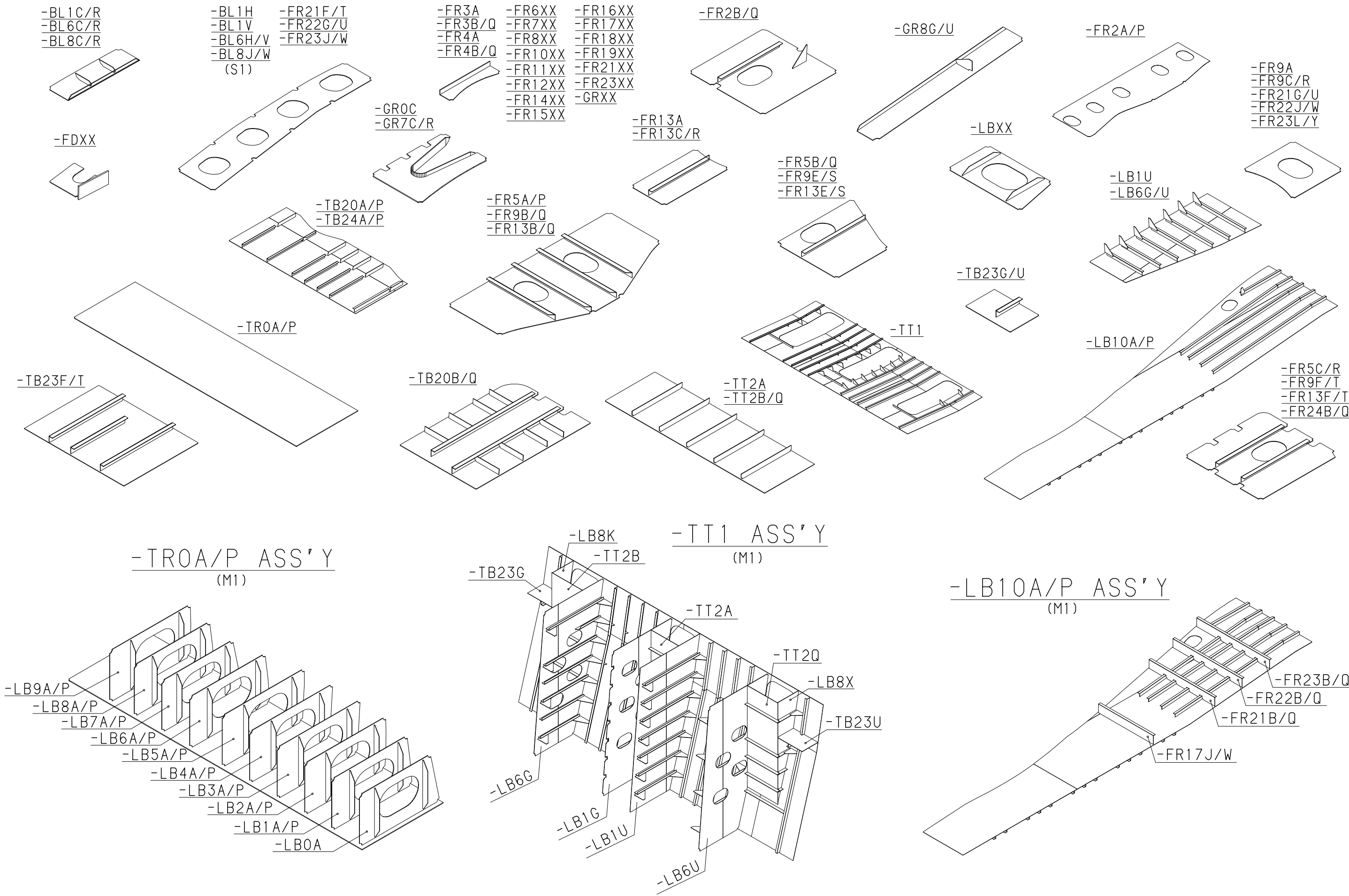
ERECTION SEQUENCE



BLOCK WEIGHT (TON)		P		C		S		TOTAL (29) SHEETS WITH A COVER	
SHIP NO.				SHIP TYPE					
EN5430				ENABOL 5430 BHP TOWBOAT					
			TEL.		BLOCK NAME				
APPROVED					<div>B101 BLOCK</div> <div>(FR.0 ~ FR.20+75)</div>				
CHECKED									
CHECKED									
DRAWN									
GMB Inc 586-1, Seonam-dong Nam-gu, Ulsan, Korea				SCALE		DWG NO.			
				DATE		REV.NO.			

DATE	REV NO	DESCRIPTION	SHOP	PAGE	APPROVAL		
					DRAW	CHECK	APPR
	0	ISSUED TO YARD					
NOTED							
ERECTION		O, X	P.E BLOCK	BLOCK COMPOSITION		BASE	
UNIT ERECT						NOMAL	
PRE ERECT							
ERECT							

B101 BLOCK PROCESS

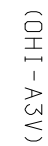


ASSEMBLY NO	WEIGHT (Kg)	COG. X (M)	COG. Y (M)	COG. Z (M)	ASSY. AREA (M ²)	ASSY. Y ONLY
101	62.166	7.531	0.002	2.463	1828.412	(ASSY. Y ONLY)
DK1						
SS1						
SS2						
TT1						
TT2						
TT3						
TT4						
TT5						
TT6						
TT7						
TT8						
TT9						
TT10						
TT11						
TT12						
TT13						
TT14						
TT15						
TT16						
TT17						
TT18						
TT19						
TT20						
TT21						
TT22						
TT23						
TT24						
TT25						
TT26						
TT27						
TT28						
TT29						
TT30						
TT31						
TT32						
TT33						
TT34						
TT35						
TT36						
TT37						
TT38						
TT39						
TT40						
TT41						
TT42						
TT43						
TT44						
TT45						
TT46						
TT47						
TT48						
TT49						
TT50						
TT51						
TT52						
TT53						
TT54						
TT55						
TT56						
TT57						
TT58						
TT59						
TT60						
TT61						
TT62						
TT63						
TT64						
TT65						
TT66						
TT67						
TT68						
TT69						
TT70						
TT71						
TT72						
TT73						
TT74						
TT75						
TT76						
TT77						
TT78						
TT79						
TT80						
TT81						
TT82						
TT83						
TT84						
TT85						
TT86						
TT87						
TT88						
TT89						
TT90						
TT91						
TT92						
TT93						
TT94						
TT95						
TT96						
TT97						
TT98						
TT99						
TT100						
TT101						
TT102						
TT103						
TT104						
TT105						
TT106						
TT107						
TT108						
TT109						
TT110						
TT111						
TT112						
TT113						
TT114						
TT115						
TT116						
TT117						
TT118						
TT119						
TT120						
TT121						
TT122						
TT123						
TT124						
TT125						
TT126						
TT127						
TT128						
TT129						
TT130						
TT131						
TT132						
TT133						
TT134						
TT135						
TT136						
TT137						
TT138						
TT139						
TT140						
TT141						
TT142						
TT143						
TT144						
TT145						
TT146						
TT147						
TT148						
TT149						
TT150						
TT151						
TT152						
TT153						
TT154						
TT155						
TT156						
TT157						
TT158						
TT159						
TT160						
TT161						
TT162						
TT163						
TT164						
TT165						
TT166						
TT167						
TT168						
TT169						
TT170						
TT171						
TT172						
TT173						
TT174						
TT175						
TT176						
TT177						
TT178						
TT179						
TT180						
TT181						
TT182						
TT183						
TT184						
TT185						
TT186						
TT187						
TT188						
TT189						
TT190						
TT191						
TT192						
TT193						
TT194						
TT195						
TT196						
TT197						
TT198						
TT199						
TT200						
TT201						
TT202						
TT203						
TT204						
TT205						
TT206						
TT207						
TT208						
TT209						
TT210						
TT211						
TT212						
TT213						
TT214						
TT215						
TT216						
TT217						
TT218						
TT219						
TT220						
TT221						
TT222						
TT223						
TT224						
TT225						
TT226						
TT227						
TT228						
TT229						
TT230						
TT231						
TT232						
TT233						
TT234						
TT235						
TT236						
TT237						
TT238						
TT239						
TT240						
TT241						
TT242						
TT243						
TT244						
TT245						
TT246						
TT247						
TT248						
TT249						
TT250						
TT251						
TT252						
TT253						
TT254						
TT255						
TT256						
TT257						
TT258						
TT259						
TT260						
TT261						
TT262						
TT263						
TT264						
TT265						
TT266						
TT267						
TT268						
TT269						
TT270						
TT271						
TT272						
TT273						
TT274						
TT275						
TT276						
TT277						
TT278						
TT279						
TT280						
TT281						
TT282						
TT283						
TT284						
TT285						
TT286						
TT287						
TT288						
TT289						
TT290						
TT291						
TT292						
TT293						
TT294						
TT295						
TT296						
TT297						
TT298						
TT299						
TT300						
TT301						
TT302						
TT303						
TT304						
TT305						
TT306						
TT307						
TT308						
TT309						
TT310						
TT311						
TT312						
TT313						
TT314						
TT315						
TT316						
TT317						
TT318						
TT319						
TT320						
TT321						
TT322						
TT323						
TT324						
TT325						
TT326						
TT327						
TT328						
TT329						
TT330						
TT331						

ASSEMBLY_NO	WEIGHT (Kg)	COG_X (M)	COG_Y (M)	COG_Z (M)	ASSY_AREA (M) w)	
101	62.166,	7.531,	-0.002,	2.463,	1828.412, (ASS'Y only)	
FR11B	0.038,	4.946,	1.269,	2.035,	1.210,(1.210)
FR11C	0.038,	4.946,	2.677,	2.035,	1.210,(1.210)
FR11E	0.024,	4.946,	3.948,	2.452,	0.762,(0.762)
FR11F	0.026,	4.946,	5.005,	2.147,	0.831,(0.831)
FR11Q	0.038,	4.946,	-1.269,	2.035,	1.210,(1.210)
FR11R	0.038,	4.946,	-2.677,	2.035,	1.210,(1.210)
FR11S	0.024,	4.946,	-3.948,	2.452,	0.762,(0.762)
FR11T	0.026,	4.946,	-5.005,	2.147,	0.831,(0.831)
FR12A	0.023,	5.396,	-0.002,	2.328,	0.747,(0.747)
FR12B	0.037,	5.396,	1.261,	1.949,	1.177,(1.177)
FR12C	0.037,	5.396,	2.686,	1.949,	1.177,(1.177)
FR12E	0.023,	5.396,	3.948,	2.328,	0.747,(0.747)
FR12F	0.026,	5.396,	5.004,	2.045,	0.819,(0.819)
FR12Q	0.037,	5.396,	-1.261,	1.949,	1.177,(1.177)
FR12R	0.037,	5.396,	-2.686,	1.949,	1.177,(1.177)
FR12S	0.023,	5.396,	-3.948,	2.328,	0.747,(0.747)
FR12T	0.026,	5.396,	-5.004,	2.045,	0.819,(0.819)
FR14A	0.023,	6.296,	-0.002,	2.067,	0.725,(0.725)
FR14B	0.026,	6.296,	1.072,	1.823,	0.840,(0.840)
FR14C	0.020,	6.296,	1.974,	1.613,	0.630,(0.630)
FR14E	0.026,	6.296,	2.871,	1.821,	0.833,(0.833)
FR14F	0.022,	6.296,	3.943,	2.063,	0.716,(0.716)
FR14G	0.024,	6.296,	4.996,	1.823,	0.775,(0.775)
FR14Q	0.026,	6.296,	-1.072,	1.823,	0.840,(0.840)
FR14R	0.020,	6.296,	-1.974,	1.613,	0.630,(0.630)
FR14S	0.026,	6.296,	-2.871,	1.821,	0.833,(0.833)
FR14T	0.022,	6.296,	-3.943,	2.063,	0.716,(0.716)
FR14U	0.024,	6.296,	-4.996,	1.823,	0.775,(0.775)
FR15A	0.023,	6.746,	-0.002,	1.938,	0.721,(0.721)
FR15B	0.024,	6.746,	1.024,	1.729,	0.749,(0.749)
FR15C	0.025,	6.746,	1.974,	1.554,	0.782,(0.782)
FR15E	0.023,	6.746,	2.912,	1.725,	0.729,(0.729)
FR15F	0.022,	6.746,	3.933,	1.931,	0.713,(0.713)
FR15G	0.025,	6.746,	4.999,	1.720,	0.785,(0.785)
FR15Q	0.024,	6.746,	-1.024,	1.729,	0.749,(0.749)
FR15R	0.025,	6.746,	-1.974,	1.554,	0.782,(0.782)
FR15S	0.023,	6.746,	-2.912,	1.725,	0.729,(0.729)
FR15T	0.022,	6.746,	-3.933,	1.931,	0.713,(0.713)
FR15U	0.025,	6.746,	-4.999,	1.720,	0.785,(0.785)
FR16A	0.023,	7.196,	-0.002,	1.810,	0.720,(0.720)
FR16B	0.021,	7.196,	0.974,	1.630,	0.661,(0.661)
FR16C	0.030,	7.196,	1.973,	1.483,	0.940,(0.940)
FR16E	0.020,	7.196,	2.955,	1.623,	0.628,(0.628)
FR16F	0.022,	7.196,	3.924,	1.800,	0.714,(0.714)
FR16G	0.025,	7.196,	5.002,	1.612,	0.798,(0.798)
FR16Q	0.021,	7.196,	-0.974,	1.630,	0.661,(0.661)
FR16R	0.030,	7.196,	-1.973,	1.483,	0.940,(0.940)
FR16S	0.020,	7.196,	-2.955,	1.623,	0.628,(0.628)
FR16T	0.022,	7.196,	-3.924,	1.800,	0.714,(0.714)
FR16U	0.025,	7.196,	-5.002,	1.612,	0.798,(0.798)
FR17A	0.023,	7.646,	-0.002,	1.682,	0.720,(0.720)
FR17B	0.018,	7.646,	0.923,	1.525,	0.574,(0.574)
FR17C	0.035,	7.646,	1.973,	1.400,	1.099,(1.099)
FR17E	0.017,	7.646,	2.998,	1.516,	0.529,(0.529)
FR17F	0.022,	7.646,	3.914,	1.669,	0.715,(0.715)
FR17G	0.026,	7.646,	5.006,	1.499,	0.813,(0.813)
FR17L	0.044,	7.637,	6.288,	1.464,	1.131,(1.131)
FR17Q	0.018,	7.646,	-0.923,	1.525,	0.574,(0.574)
FR17R	0.035,	7.646,	-1.973,	1.400,	1.099,(1.099)
FR17S	0.017,	7.646,	-2.998,	1.516,	0.529,(0.529)
FR17T	0.022,	7.646,	-3.914,	1.669,	0.715,(0.715)
FR17U	0.026,	7.646,	-5.006,	1.499,	0.813,(0.813)
FR17Y	0.044,	7.637,	-6.288,	1.464,	1.131,(1.131)
FR18A	0.023,	8.096,	-0.002,	1.554,	0.721,(0.721)
FR18B	0.015,	8.096,	0.872,	1.416,	0.489,(0.489)
FR18C	0.040,	8.096,	1.973,	1.308,	1.260,(1.260)
FR18E	0.014,	8.096,	3.042,	1.405,	0.431,(0.431)
FR18F	0.023,	8.096,	3.904,	1.538,	0.717,(0.717)
FR18G	0.025,	8.096,	5.001,	1.387,	0.809,(0.809)
FR18Q	0.015,	8.096,	-0.872,	1.416,	0.489,(0.489)
FR18R	0.040,	8.096,	-1.973,	1.308,	1.260,(1.260)
FR18S	0.014,	8.096,	-3.042,	1.405,	0.431,(0.431)
FR18T	0.023,	8.096,	-3.904,	1.538,	0.717,(0.717)
FR18U	0.025,	8.096,	-5.001,	1.387,	0.809,(0.809)
FR19A	0.023,	8.546,	-0.002,	1.426,	0.720,(0.720)
FR19B	0.013,	8.546,	0.821,	1.306,	0.404,(0.404)
FR19C	0.045,	8.546,	1.972,	1.215,	1.422,(1.422)
FR19E	0.010,	8.546,	3.086,	1.293,	0.333,(0.333)
FR19F	0.022,	8.546,	3.894,	1.406,	0.716,(0.716)
FR19G	0.025,	8.546,	4.999,	1.275,	0.806,(0.806)
FR19Q	0.013,	8.546,	-0.821,	1.306,	0.404,(0.404)
FR19R	0.045,	8.546,	-1.972,	1.215,	1.422,(1.422)
FR19S	0.010,	8.546,	-3.086,	1.293,	0.333,(0.333)
FR19T	0.022,	8.546,	-3.894,	1.406,	0.716,(0.716)
FR19U	0.025,	8.546,	-4.999,	1.275,	0.806,(0.806)
FR21E	0.044,	10.187,	6.288,	0.938,	1.126,(1.126)
FR21F	0.125,	10.196,	1.923,	1.098,	3.987,(3.987)
FR21G	0.037,	10.196,	5.026,	1.064,	1.177,(1.177)
FR21S	0.044,	10.187,	-6.288,	0.938,	1.126,(1.126)
FR21T	0.125,	10.196,	-1.923,	1.098,	3.987,(3.987)
FR21U	0.037,	10.196,	-5.026,	1.064,	1.177,(1.177)
FR22E	0.044,	11.387,	6.288,	0.691,	1.126,(1.126)
FR22F	0.037,	11.395,	0.000,	0.687,	0.955,(0.955)
FR22G	0.109,	11.396,	1.918,	0.804,	3.467,(3.467)
FR22H	0.040,	11.395,	3.900,	0.686,	1.030,(1.030)
FR22J	0.032,	11.396,	5.023,	0.773,	1.004,(1.004)
FR22S	0.044,	11.387,	-6.288,	0.691,	1.126,(1.126)
FR22U	0.109,	11.396,	-1.918,	0.804,	3.467,(3.467)
FR22V	0.040,	11.395,	-3.900,	0.686,	1.030,(1.030)
FR22W	0.032,	11.396,	-5.023,	0.773,	1.004,(1.004)
FR23E	0.044,	12.587,	6.288,	0.445,	1.126,(1.126)
FR23H	0.040,	12.595,	-0.002,	0.424,	1.030,(1.030)
FR23J	0.098,	12.596,	1.918,	0.529,	3.128,(3.128)
FR23K	0.043,	12.595,	3.902,	0.429,	1.092,(1.092)
FR23L	0.028,	12.596,	5.025,	0.504,	0.897,(0.897)
FR23S	0.044,	12.587,	-6.288,	0.445,	1.126,(1.126)
FR23W	0.098,	12.596,	-1.918,	0.529,	3.128,(3.128)
FR23X	0.043,	12.595,	-3.902,	0.429,	1.092,(1.092)
FR23Y	0.028,	12.596,	-5.025,	0.504,	0.897,(0.897)

101-BS1

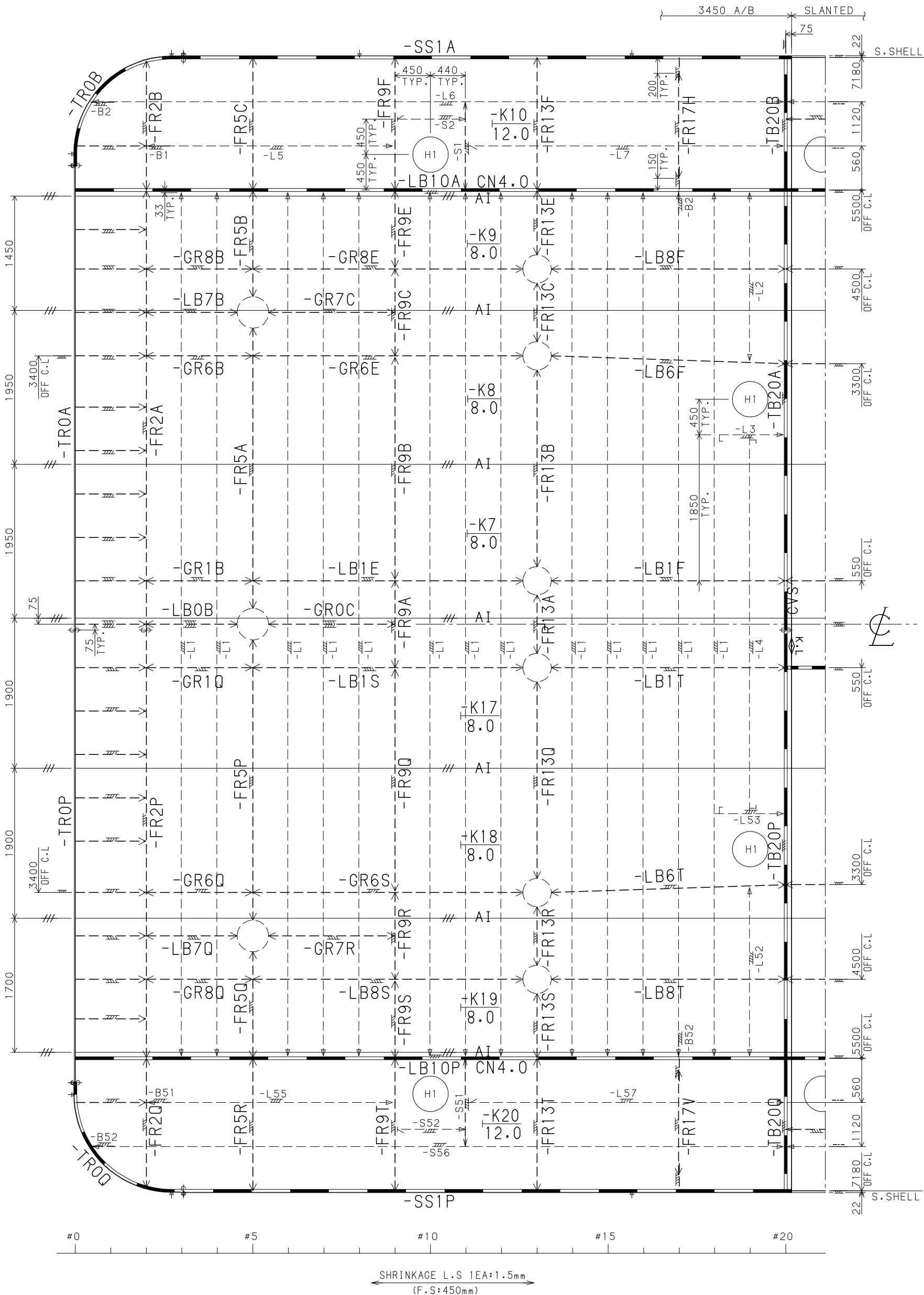
GMB Inc



MAIN DECK PLAN

101-DK1

-L1~L7, L52~L57: 100X75X8.0 U.A
-S1, S2, S51, S52: 100X10.0 F.B
-H1: Ø450



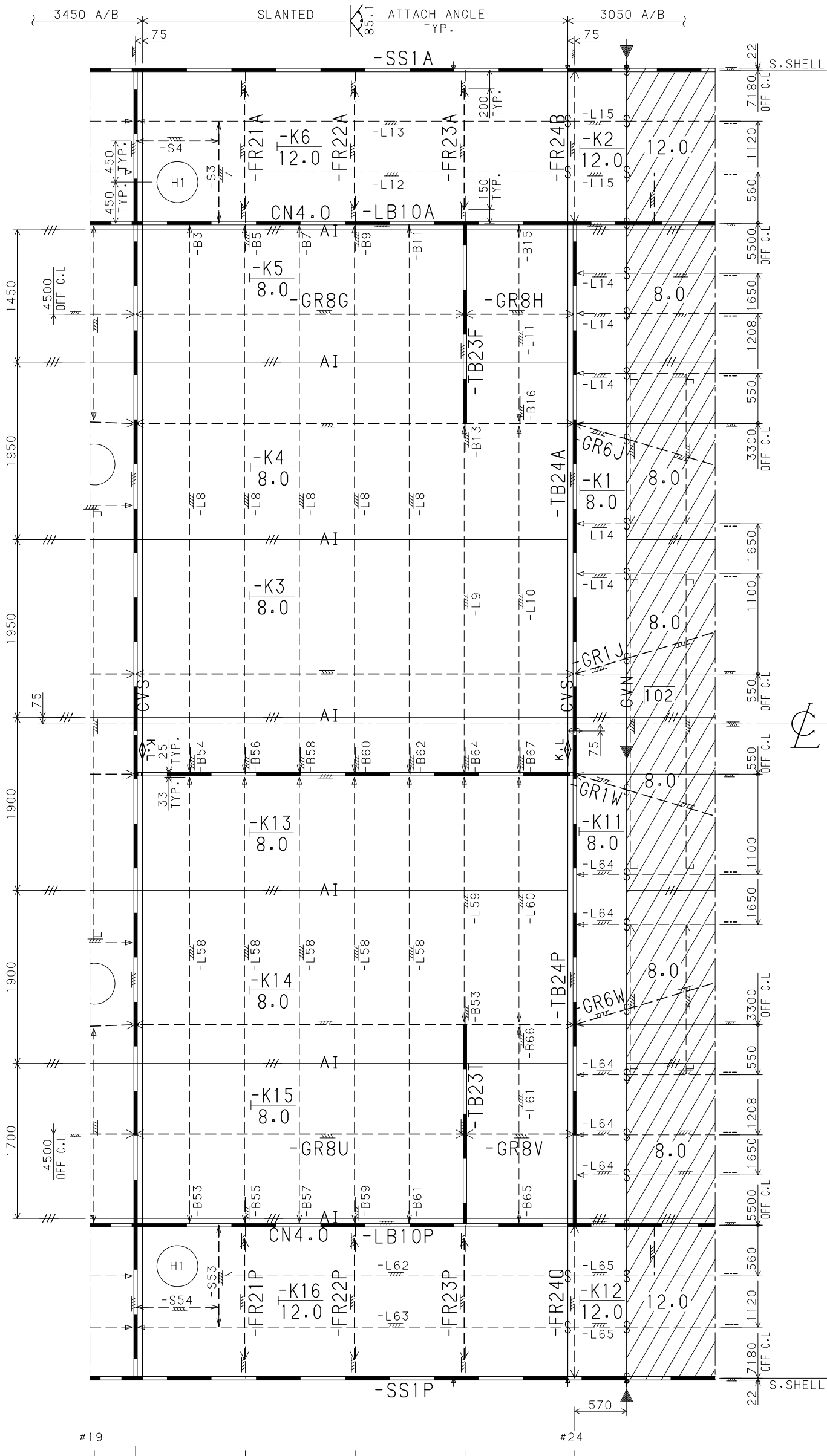
GMB Inc

(ASV-IH0)

MAIN DECK PLAN

101-DK1

-L8~L15,L58~L65:100X75X8.0 U.A
-S3,S4,S53,S54:100X10.0 F.B
-H1:Ø450



GMB Inc

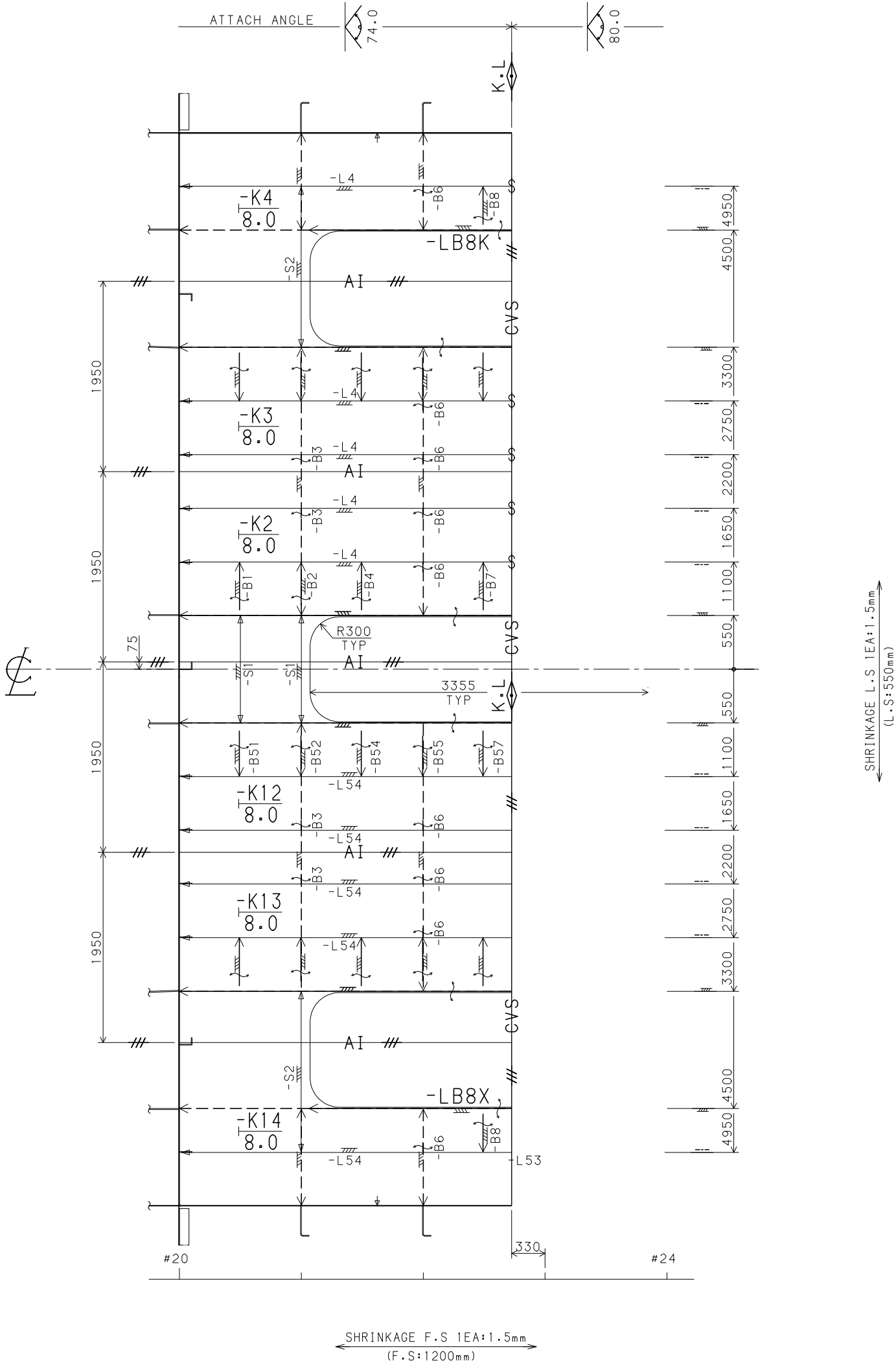
(ASV-IH)

OT FLAT

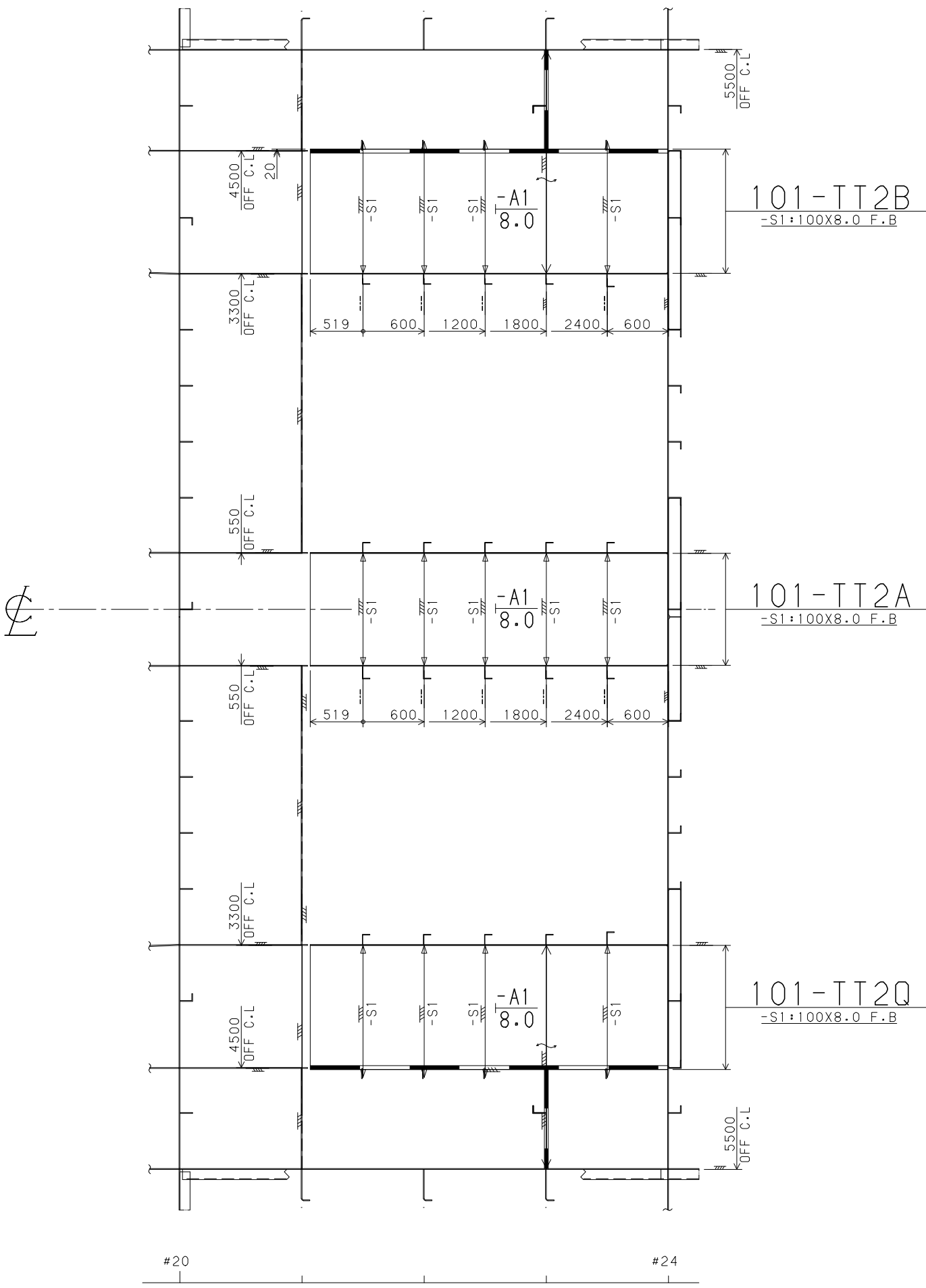
SLOPING OT FLAT

101-TT1

- L1~L4:100X75X8.0 U.A
- L51~L54:100X75X8.0 U.A
- S1~S2:100X8.0 F.B



1500 A/B PLAN



GMB Inc

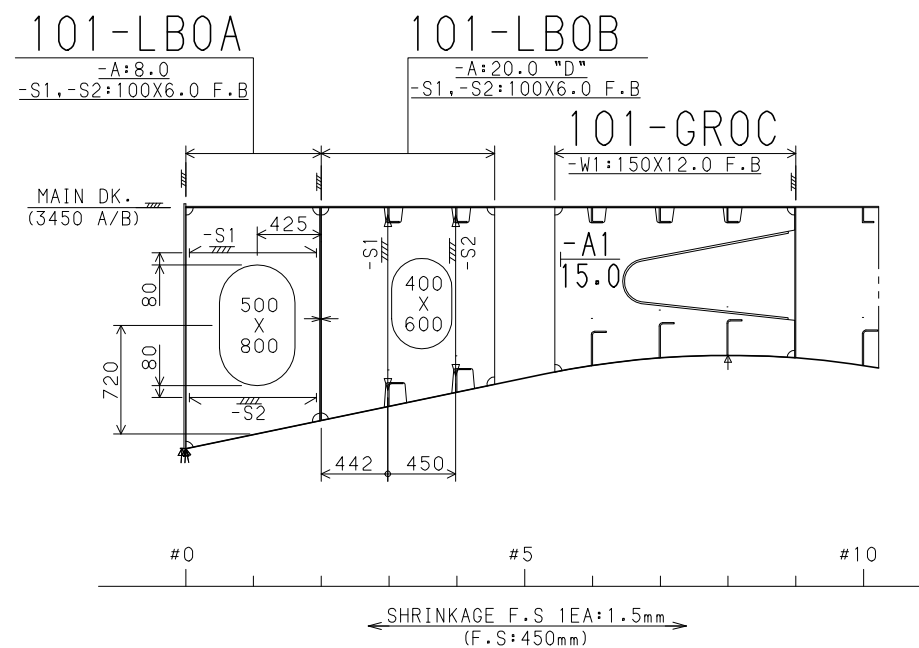
(OHI-A3V)

B101-24-TTOP

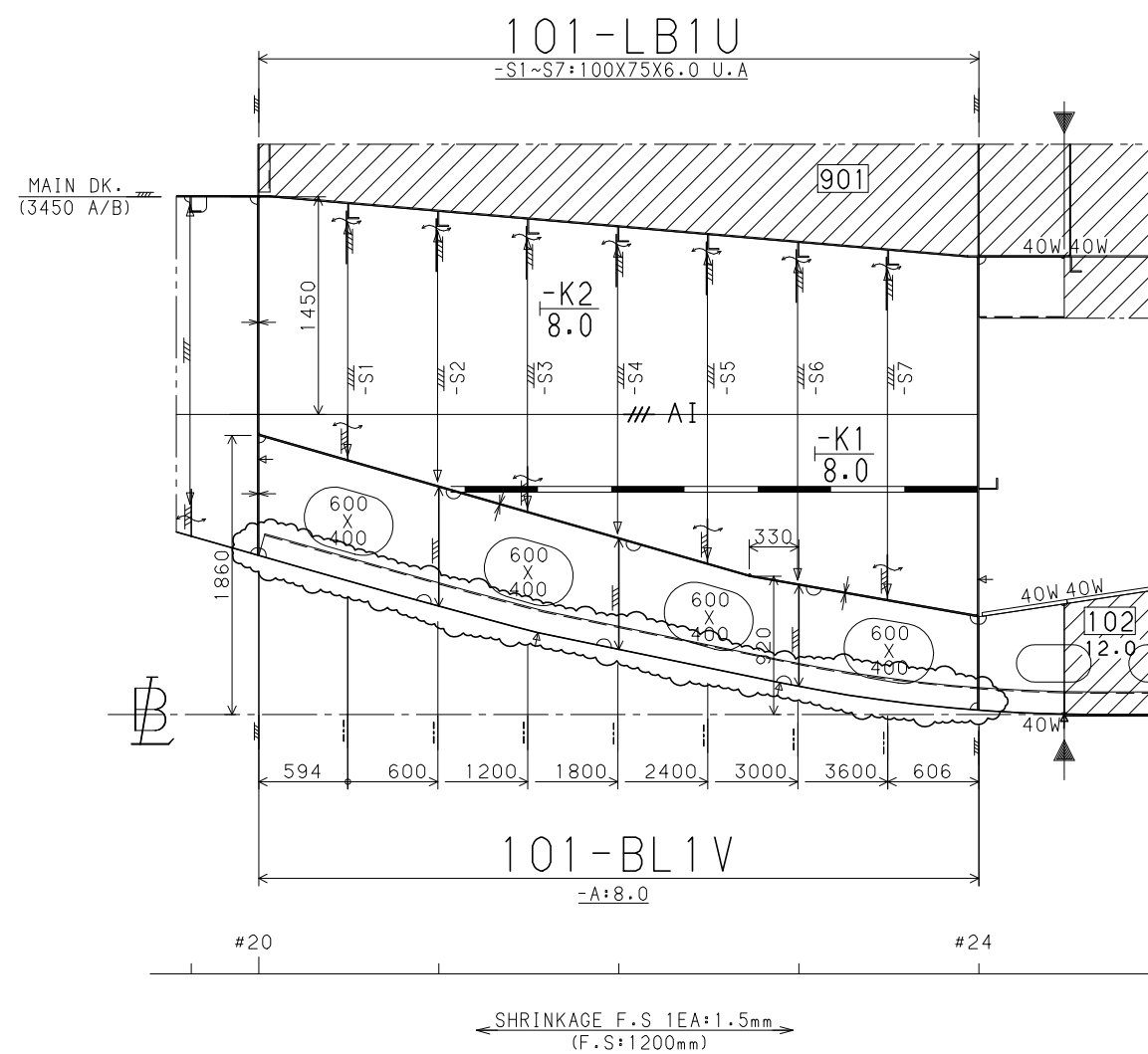
GMB	BLOCK NO.	
	PAGE	/

CENTER LINE ELEV. □

3950 OFF C.L. ELEV. (P&S) SIM.

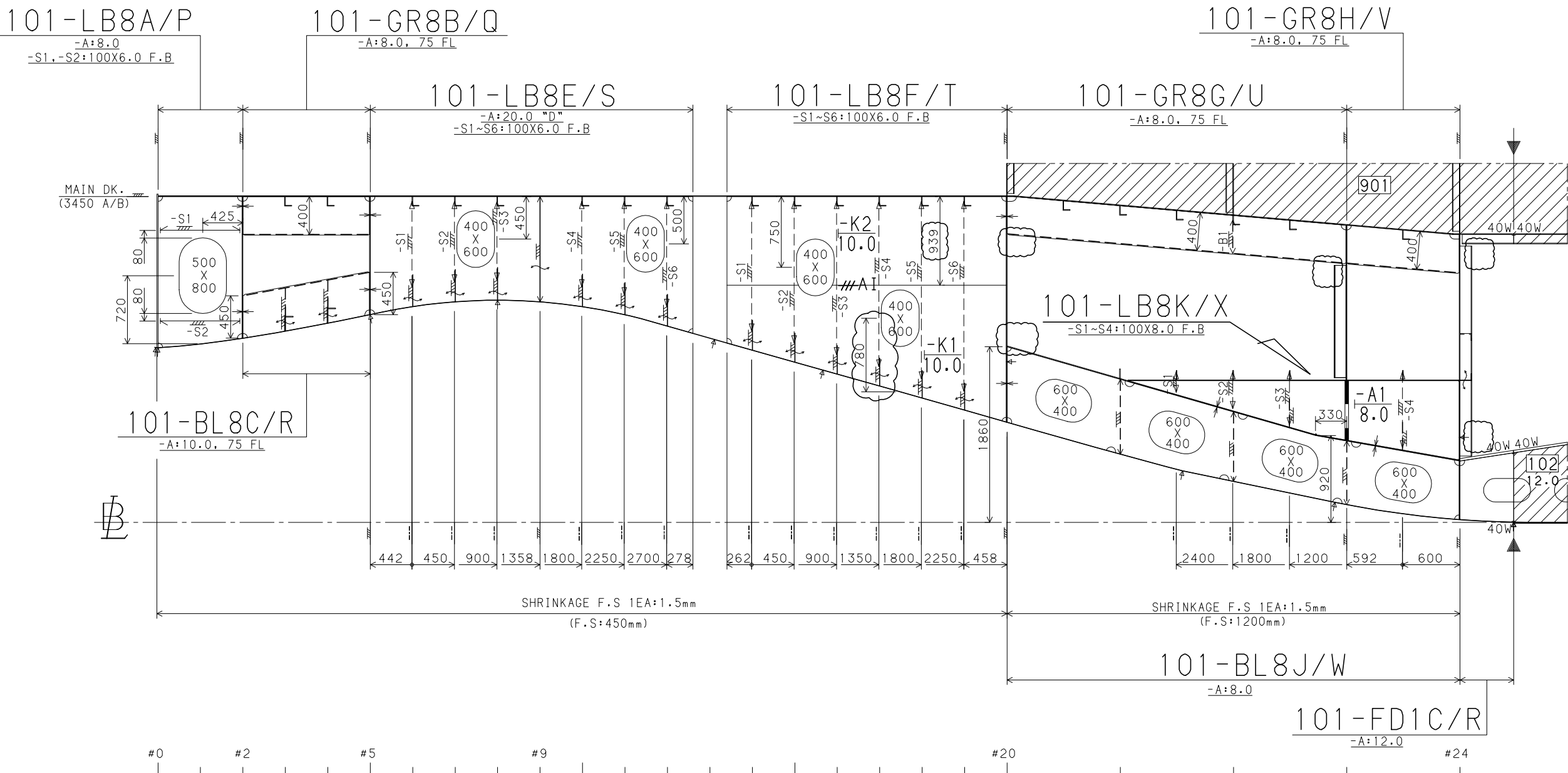


550 OFF C.L. ELEV. (S)



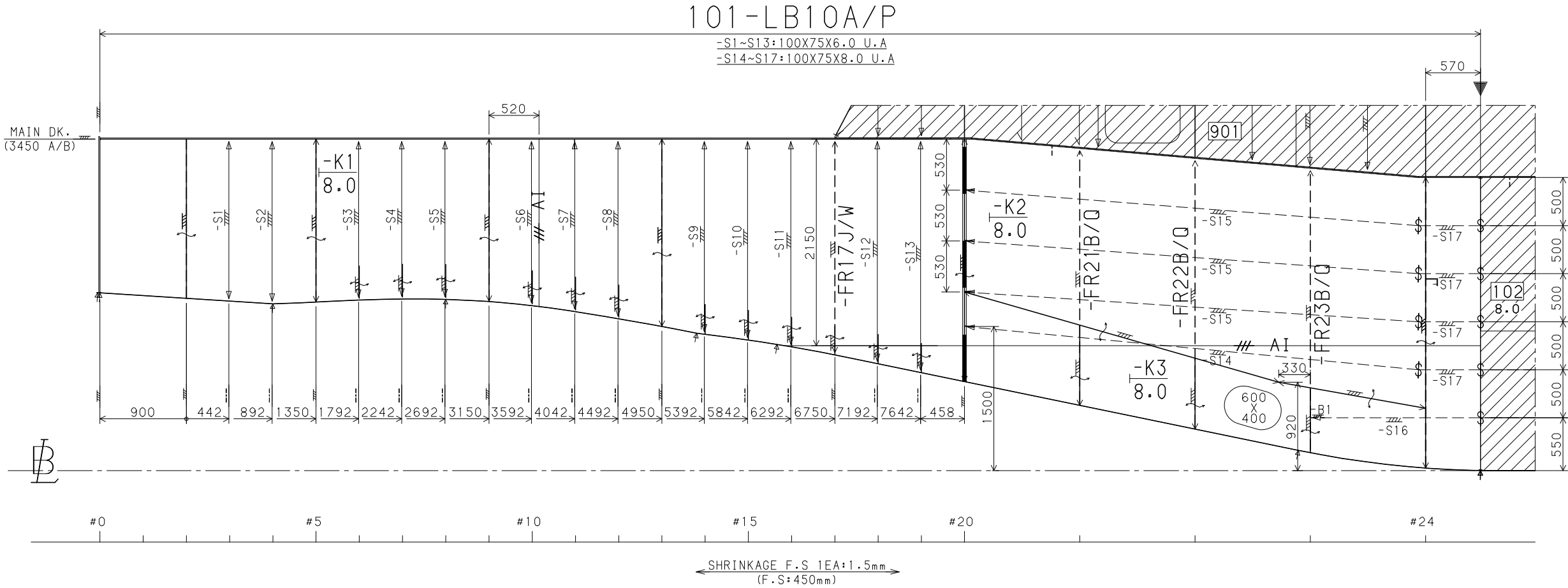
4500 OFF C.L. ELEV. (P&S)

THE STB'D IS SIM. TO PORT (EX. AS SHOWN)

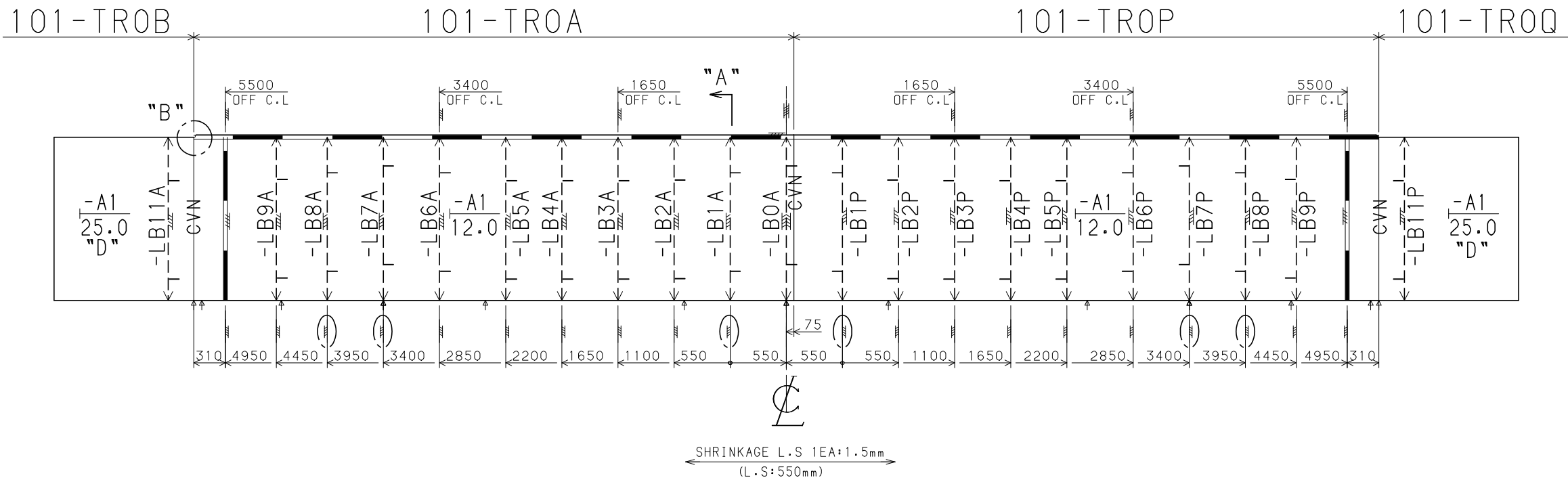


5500 OFF C.L ELEV. (P&S)

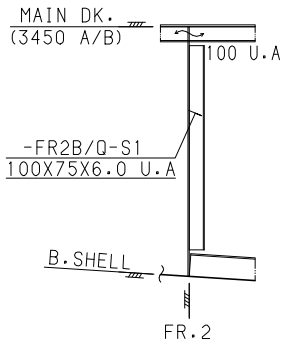
THE STR'D IS SIM. TO PORT (EX. AS SHOWN)



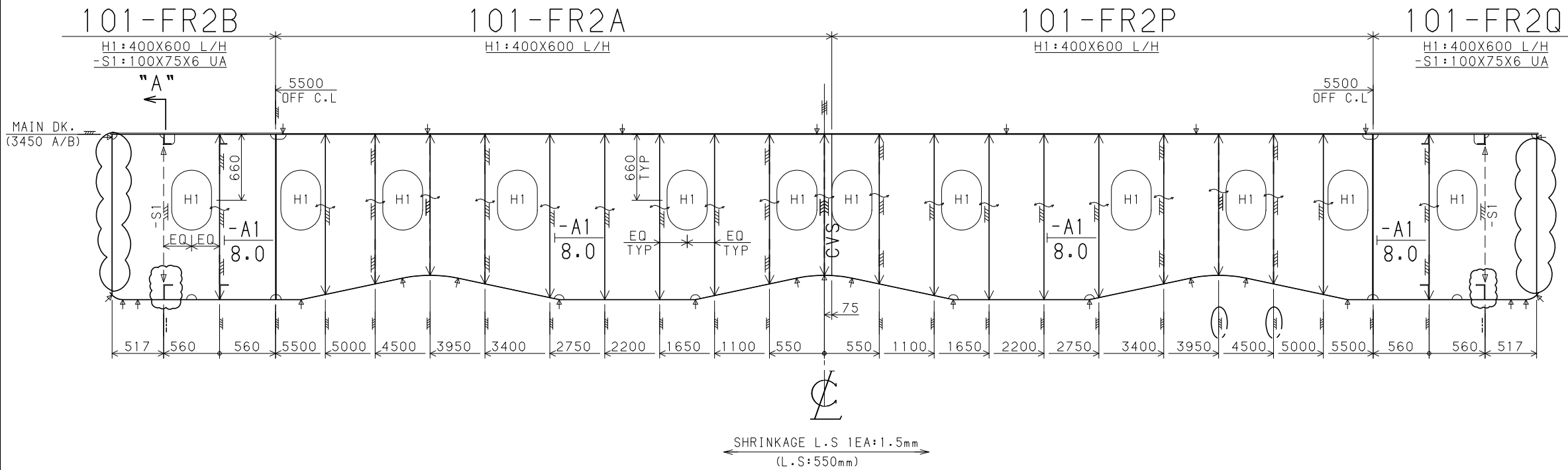
FR.0 SEC.
(TRANSOM)



"A" ELEV.

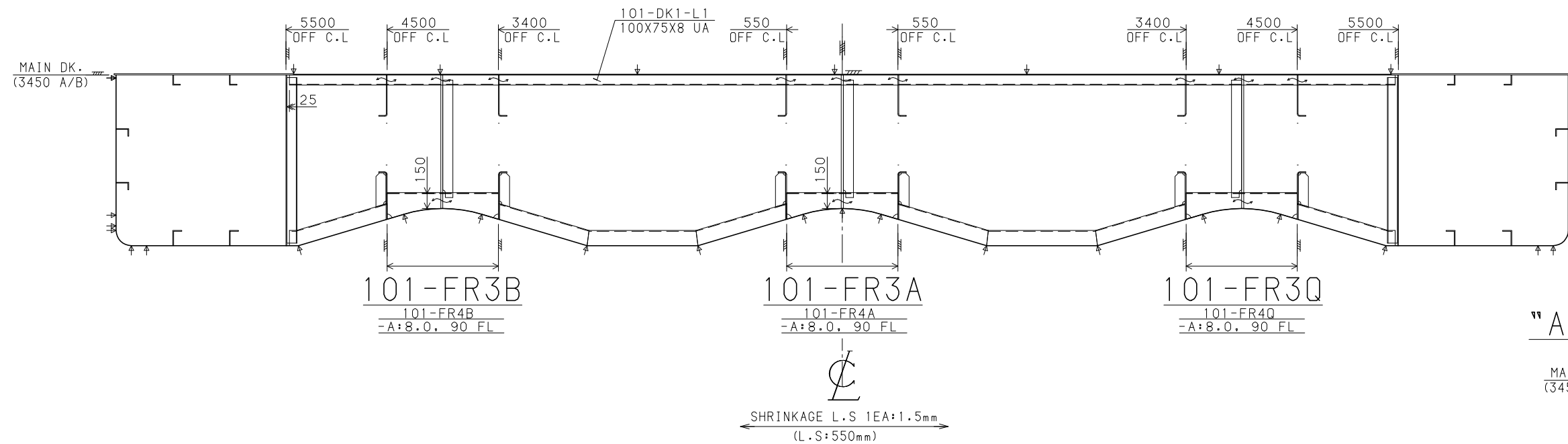


FR.2 SEC.



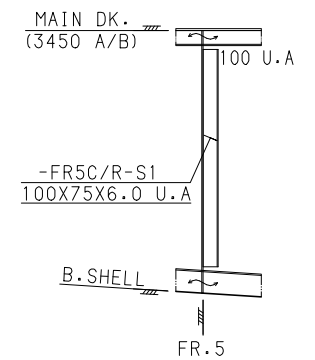
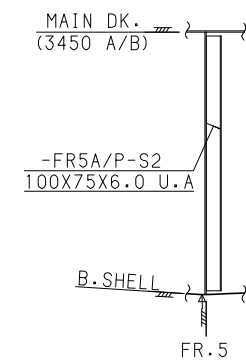
FR. 3 SEC.

FR.4. SIM

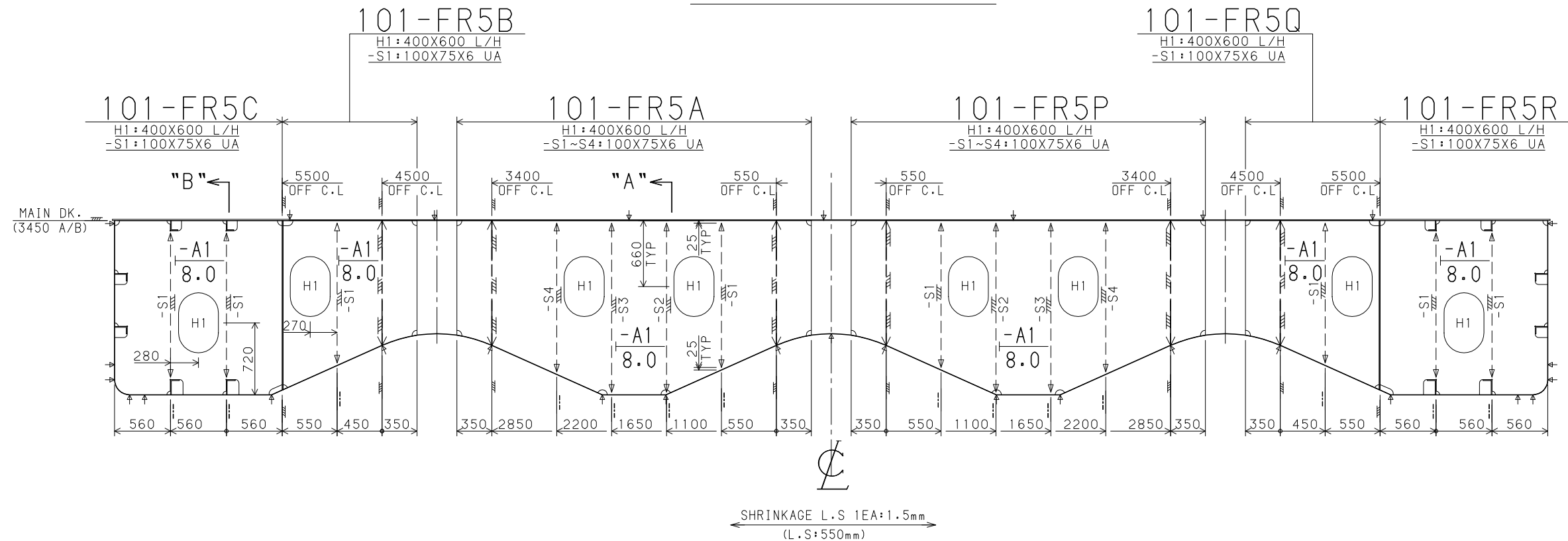


"A" ELEV.

"B" ELEV.

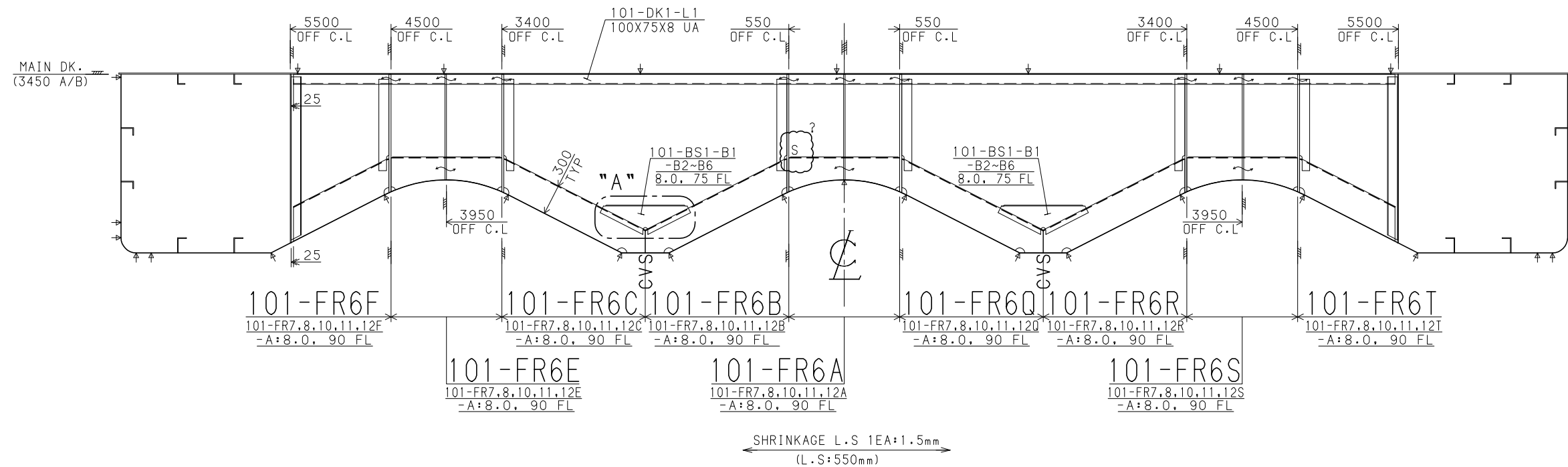


FR. 5 SEC.

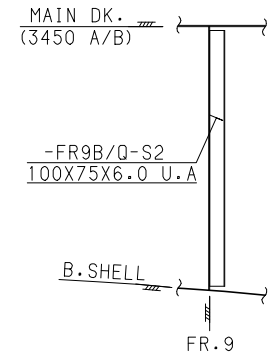


FR. 6 SEC.

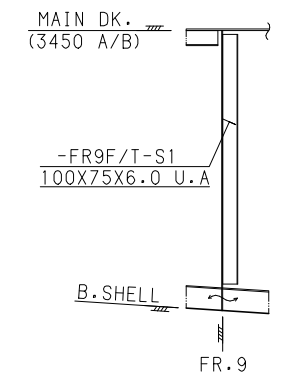
FR.7,8,10,11,12 SIM



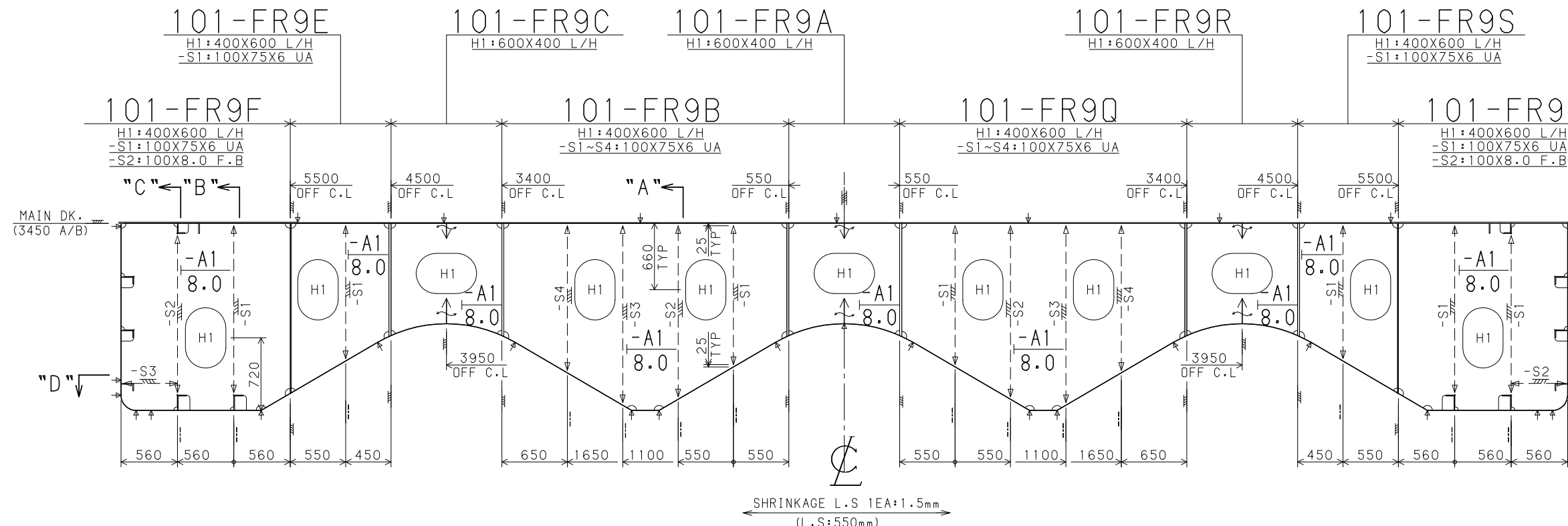
"A" ELEV.



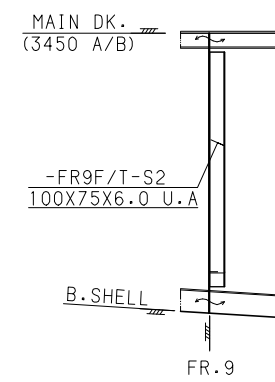
"B" ELEV.



FR. 9 SEC.

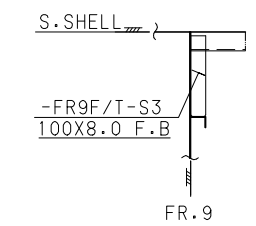


"C" ELEV.

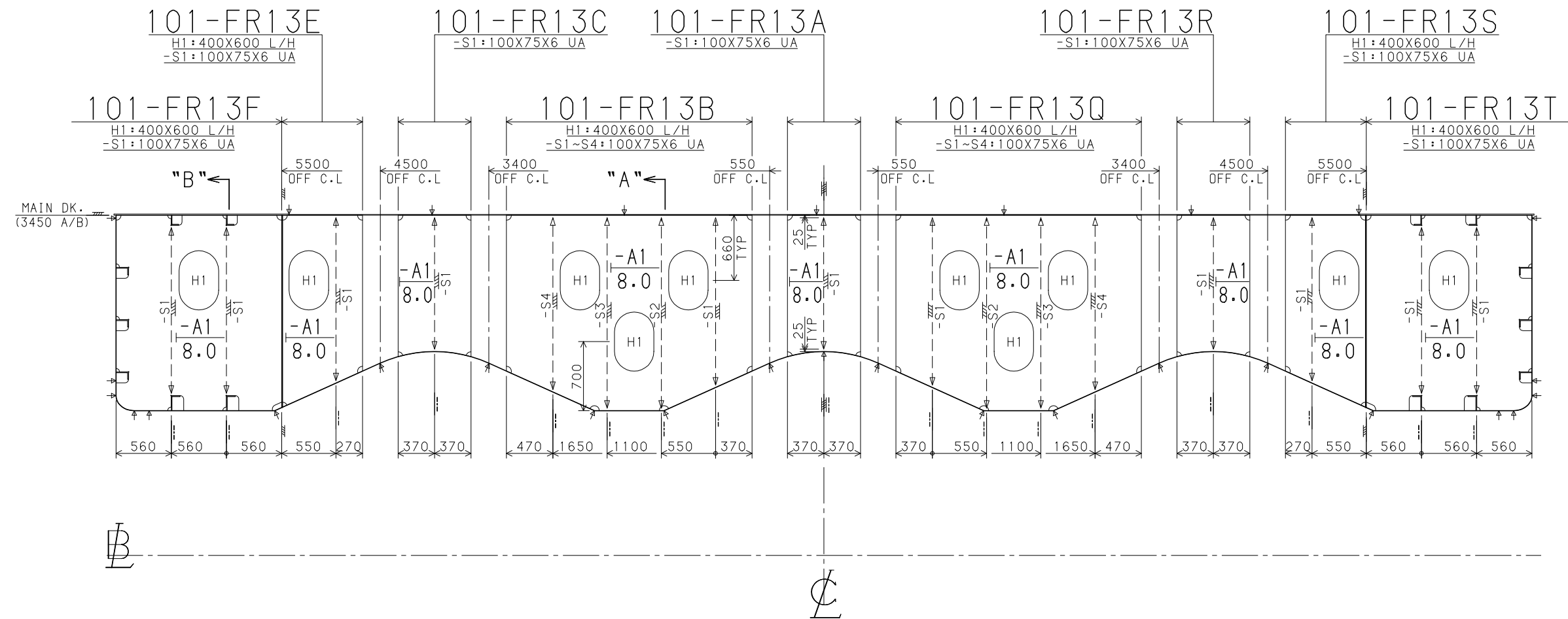


"D" PLAN

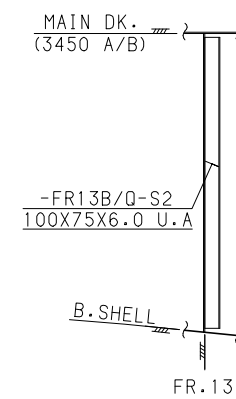
(1860 A/B)



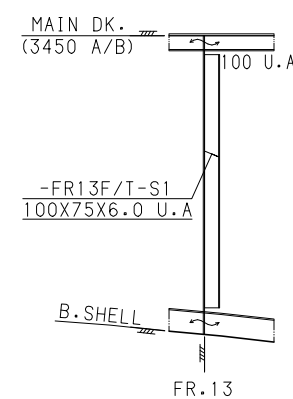
FR.13 SEC.



"A" ELEV.

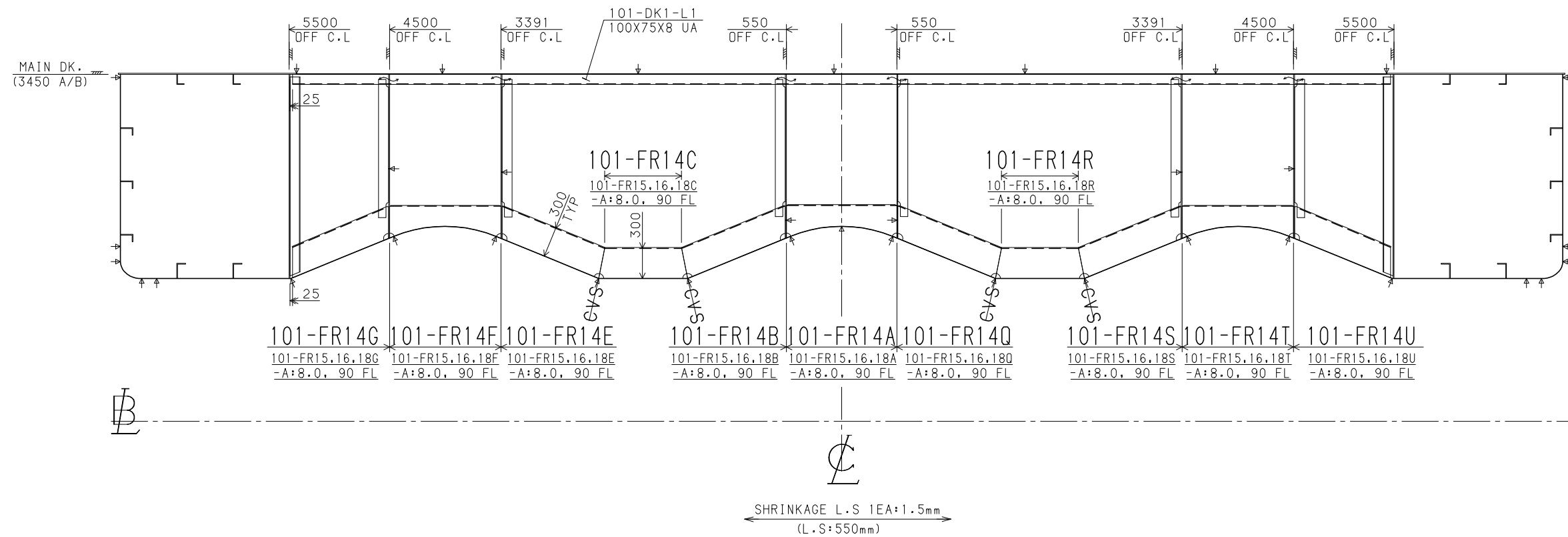


"B" ELEV.

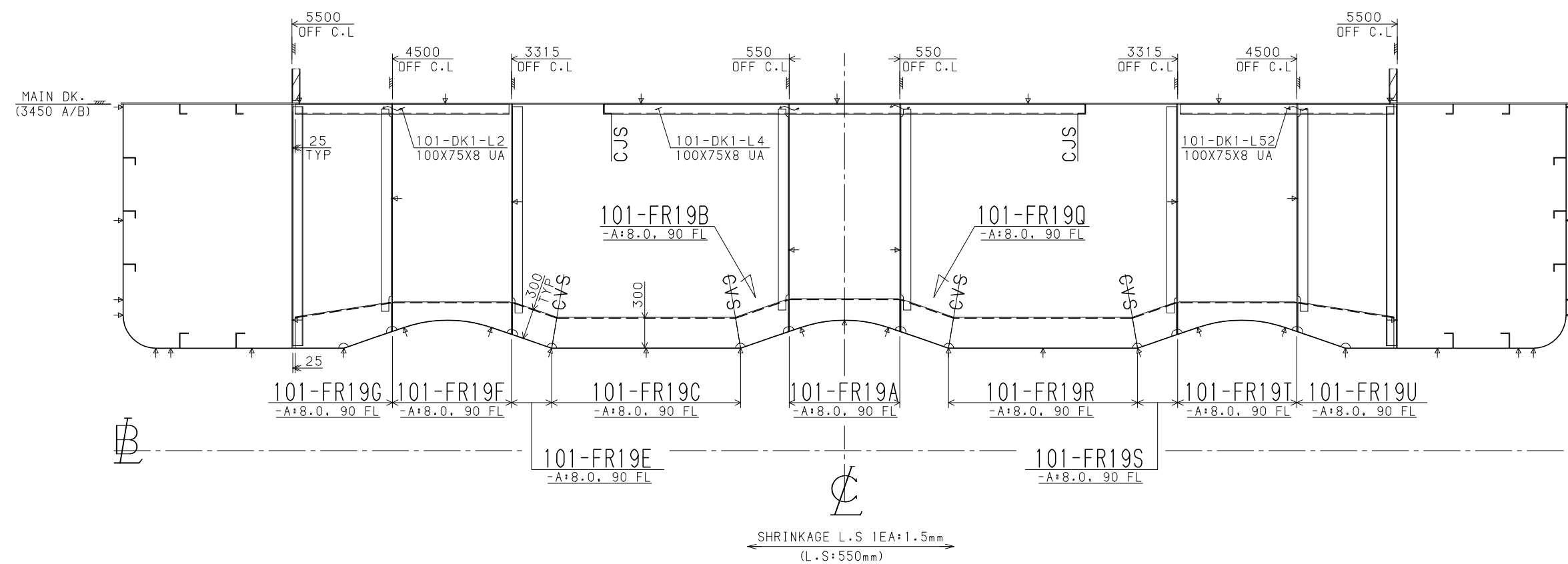


FR. 14 SEC.

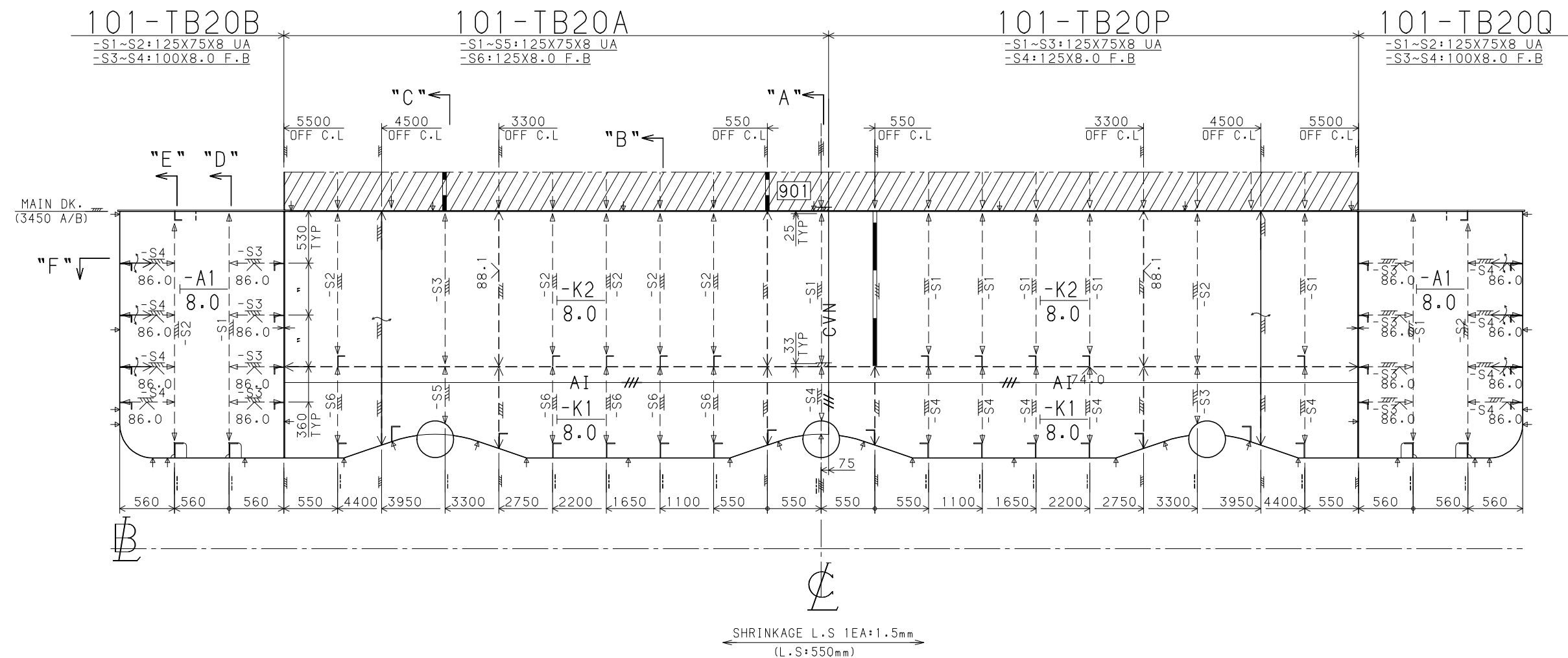
FR.15,16,18 SIM



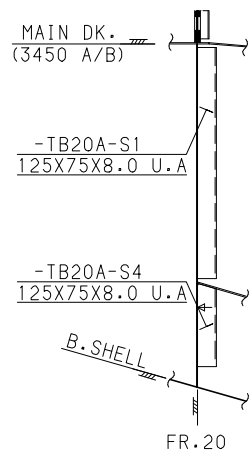
FR. 19 SEC.



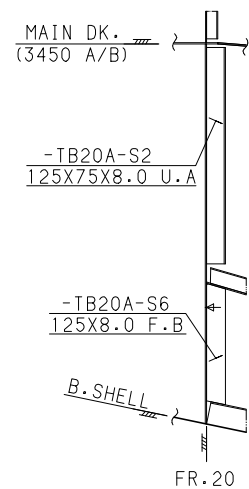
FR. 20 SEC.



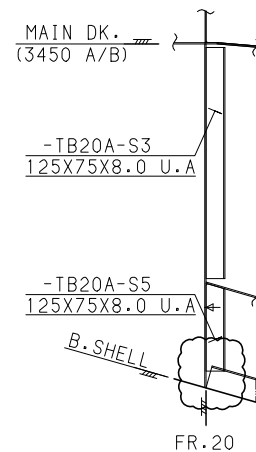
"A" ELEV.



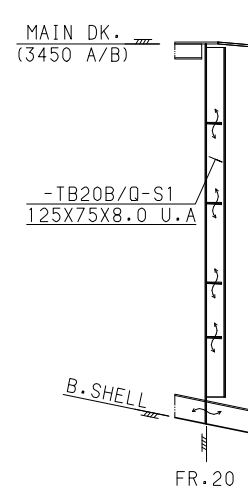
"B" ELEV.



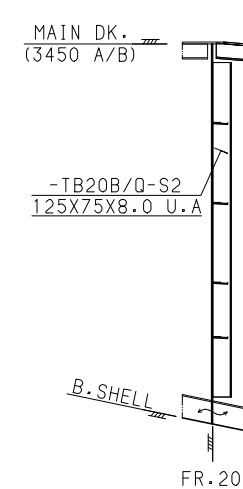
"C" ELEV.



"D" ELEV.

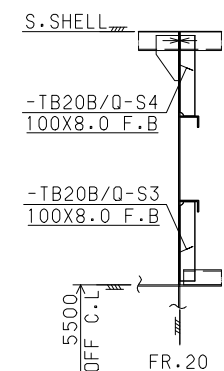


"E" ELEV.

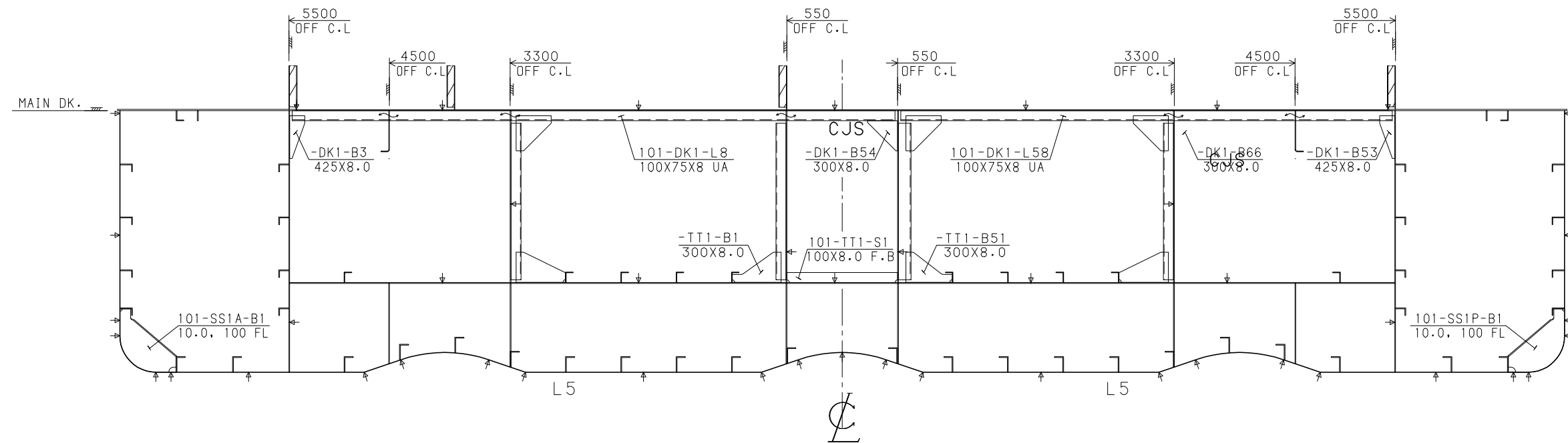


"F" PLAN

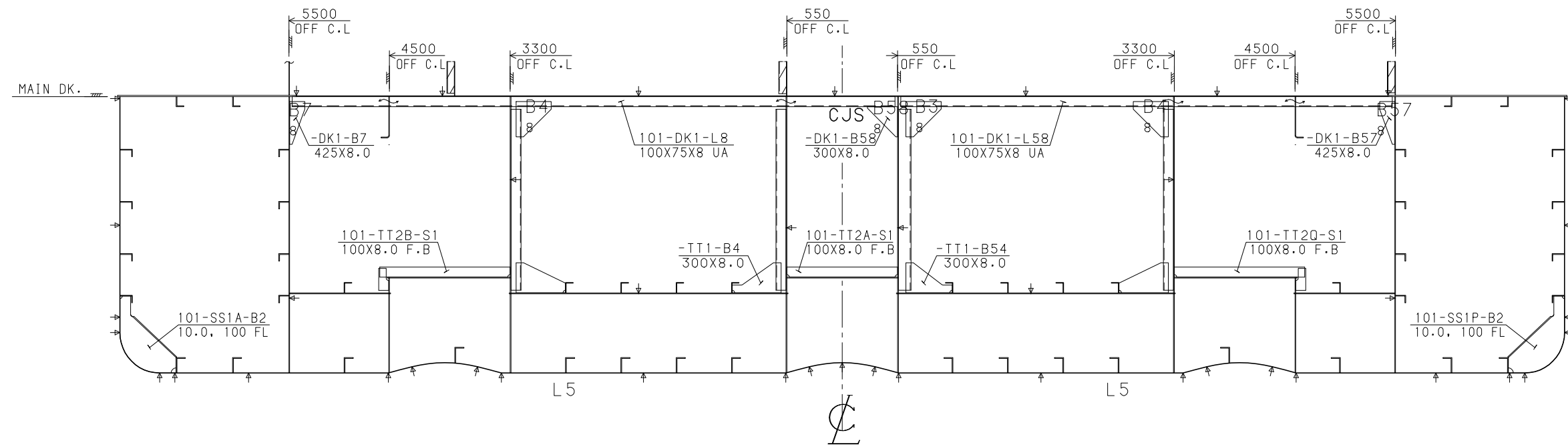
(2920 A/B)



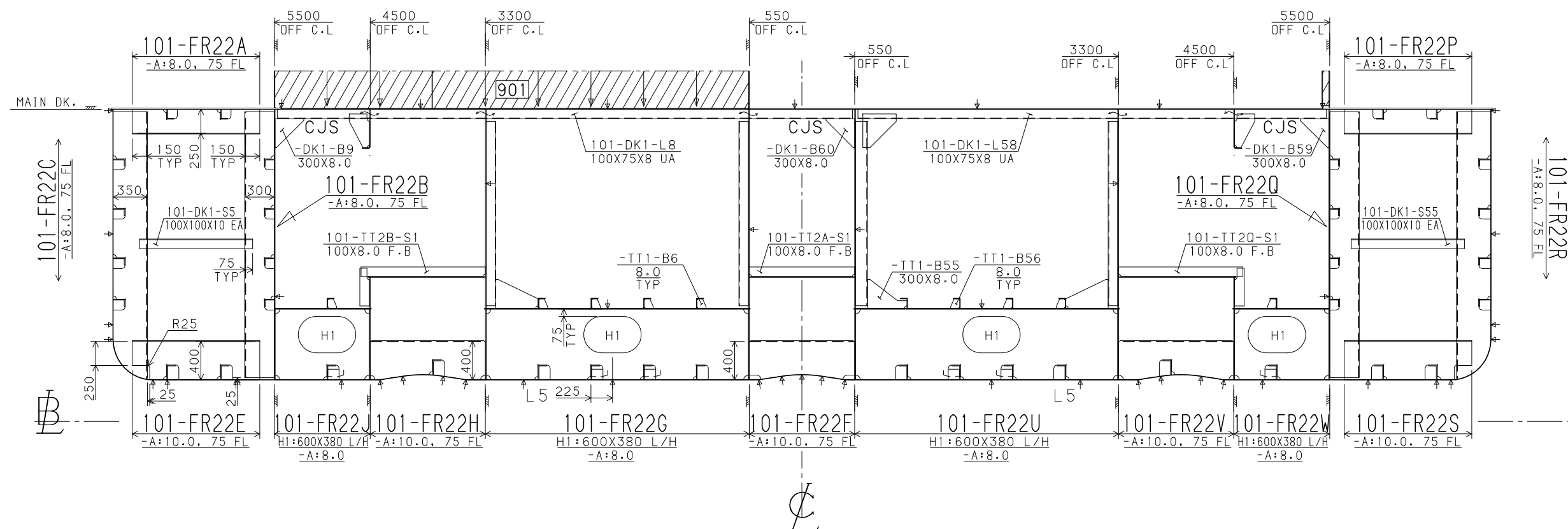
FR. 20+600 SEC.



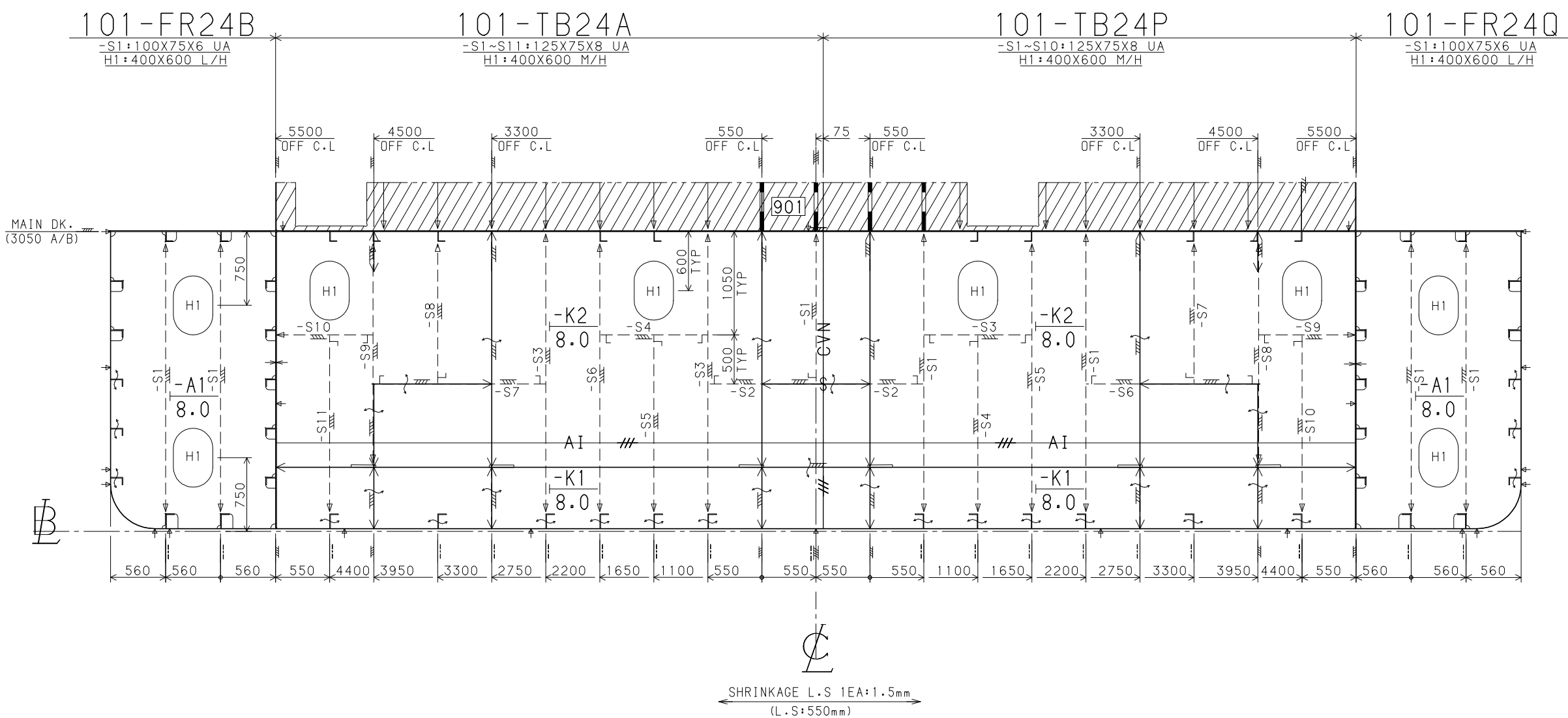
FR. 21+600 SEC.



FR. 22 SEC.



FR. 24 SEC.



B101-54-FR24-SEC