

1. BOTH SIDE ARE SYMMETRIC EXCEPT AS SHOWN.
2. ALL SECTIONS ARE SHOWN LOOKING FORWARD EXCEPT AS NOTED.
3. ALL ELEVATIONS ARE SHOWN LOOKING PORT SIDE EXCEPT AS NOTED.
4. WELD BEAD TO BE CHIPPED IN WAY OF NO SCALLOP OF A CROSS THE WELDING LINE.
5. WELDING LEG LENGTH IS (  $\frac{5.0}{8}$  ). EXCEPT AS SHOWN.
6. NO MARKED STEEL TO BE GRADE "A".    ="AH32".    ="DH36"    ="EH36"  
      ="ZAH32" TO BE HIGHER TENSIL STEEL.
7. WHERE LONG'L DECK BEAMS PASS THROUGH SLOTTED FRAMES, BHDS,  
OR GIRDERS, THERE IS TO BE A PAIR OF MATCHED INTERMITTENT WELDS ON  
EACH SIDE OF SUCH INTERSECTION AND 150mm DBL CONT AT ENDS
8. WHERE LONG'L DECK BEAMS PASS THROUGH SLOTTED FRAMES, BHDS, OR GIRDERS,  
THERE IS TO BE A PAIR OF MATCHED INTERMITTENT WELDS ON EACH SIDE OF SUCH  
INTERSECTION AND 150mm DBL CONT AT ENDS.
9. WHERE LONG'L MEMBERS (EXCEPT FOR DECK BEAMS) PASS THROUGH SLOTTED  
FRAMES OR BHDS THERE IS TO A 150mm DOUBLE CONTINUOUS WELD AT SUCH  
INTERSECTION AND AT THEIR ENDS .
10. WHERE BEAMS, STIFF, FRAMES etc. (EXCEPT LONG'L MEMBERS) PASS THRU SLOTTED  
GIRDERS , SHELVES OR STRINGERS, THERE IS TO BE A PAIR OF MATCHED  
INTERMITTENT WELDS ON EACH SIDE OF SUCH INTERSECTIONS, AND THE BEAMS,  
STIFFENERS AND FRAMES ARE TO BE EFFICIENTLY ATTACHED TO THE GIRDERS,  
SHELVES AND STRINGERS.

```

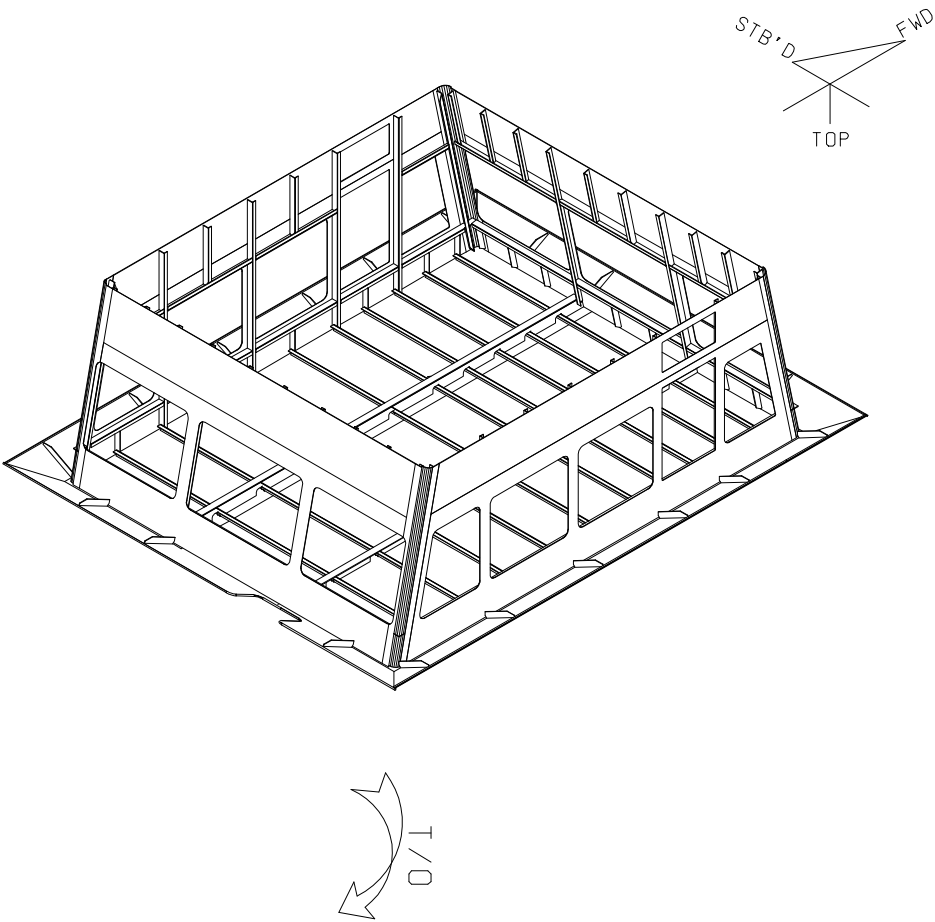
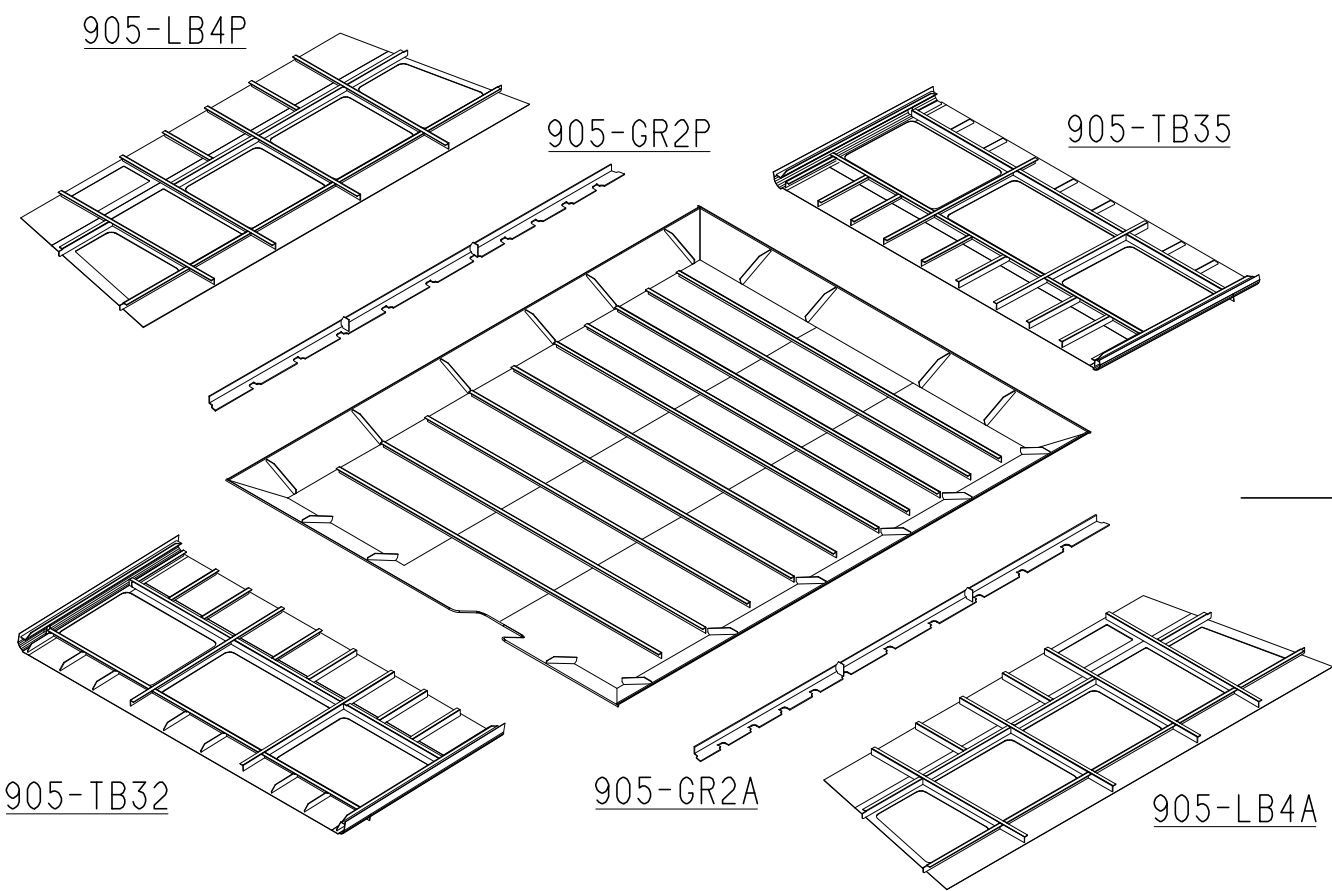
graph TD
    A([ ]) --- B905([B905])
    B905 --- C([ ])
    B905 --- D([B904])
    B905 --- E([ ])

```

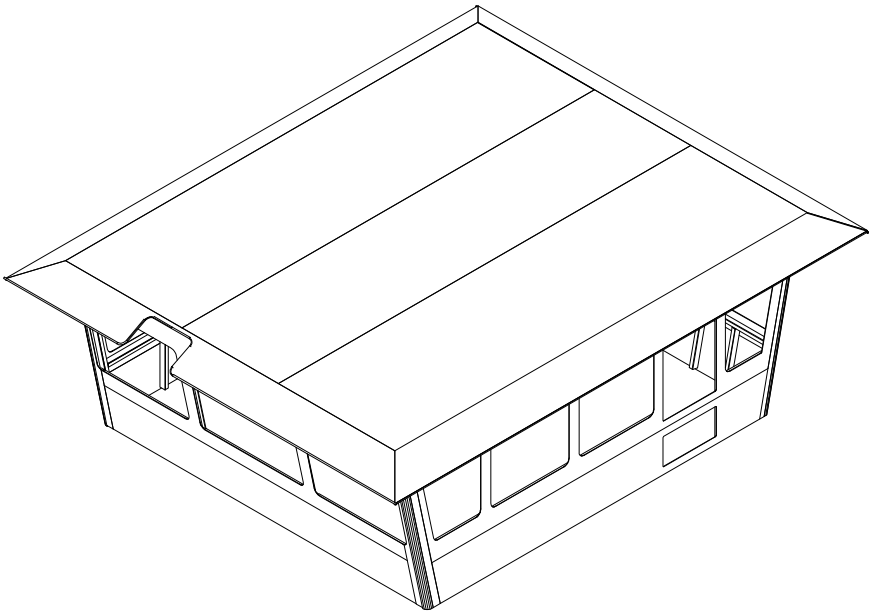
BLOCK WEIGHT (TON)	P		C		S		TOTAL ( 8 )SHEETS WITH A COVER	
SHIP NO.				SHIP TYPE				
EN5430				ENABOL 5430 BHP TOWBOAT				
PRODUCTION DESIGN			TEL.		BLOCK NAME  <div style="text-align: center;">B905 BLOCK</div> <div style="text-align: center;">( FR.32-975 ~ FR.35+600 )</div>			
APPROVED								
CHECKED								
CHECKED	Y.S SHIN							
DRAWN	Y.I SEO							
GMB Inc 586-1, Seonam-dong Nam-gu, Ulsan, Korea				SCALE		DWG NO.		
				(1/50)		B905-01-TITLE		
				DATE		REV.NO.		
				2010.07.28		<div style="text-align: center;">1</div>		

DATE	REV NO	DESCRIPTION	SHOP	PAGE	APPROVAL		
					DRAW	CHECK	APPR
	△ <sub>0</sub>	ISSUED TO YARD					
	△ <sub>1</sub>	REV.WELD'G DET					
<div>NOTED</div>							
<div> <div> <div>DIVISION</div> <div>ERECTION</div> </div> </div>		0, X	P.E BLOCK	BLOCK COMPOSITION			BASE
UNIT ERECT							NOMAL
PRE ERECT							
ERECT							

905-DK1 ASS'Y



B905 BLOCK



- 0 905
  - 1 DK1/G (1) \_\_Pg.0
    - 2 GR2A/S (1) \_\_Pg.0
    - 2 GR2P/S (1) \_\_Pg.0
    - 2 LB2A/S (1) \_\_Pg.0
    - 2 LB2P/S (1) \_\_Pg.0
    - 2 LB4A/S (1) \_\_Pg.0
    - 2 LB4P/S (1) \_\_Pg.0
    - 2 TB32/S (1) \_\_Pg.0
    - 2 TB35/S (1) \_\_Pg.0

ASSEMBLY_NO	WEIGHT (Kg)	COG_X (M)	COG_Y (M)	COG_Z (M)	ASSY_AREA	
-----						
905	4.427,	31.125,	-0.002,	12.530,	188.654, (ASS'Y only)	
-----						
DK1	4.427,	31.125,	-0.002,	12.530,	188.654, (	99.847)
GR2A	0.106,	31.066,	0.856,	12.930,	2.728, (	2.728)
GR2P	0.106,	31.066,	-0.856,	12.930,	2.728, (	2.728)
LB2A	0.007,	31.629,	2.408,	12.850,	0.315, (	0.315)
LB2P	0.007,	31.629,	-2.408,	12.850,	0.315, (	0.315)
LB4A	0.415,	31.061,	2.431,	11.881,	19.224, (	19.224)
LB4P	0.415,	31.061,	-2.431,	11.881,	19.224, (	19.224)
TB32	0.480,	28.316,	-0.000,	11.789,	22.188, (	22.188)
TB35	0.478,	33.871,	-0.000,	11.790,	22.085, (	22.085

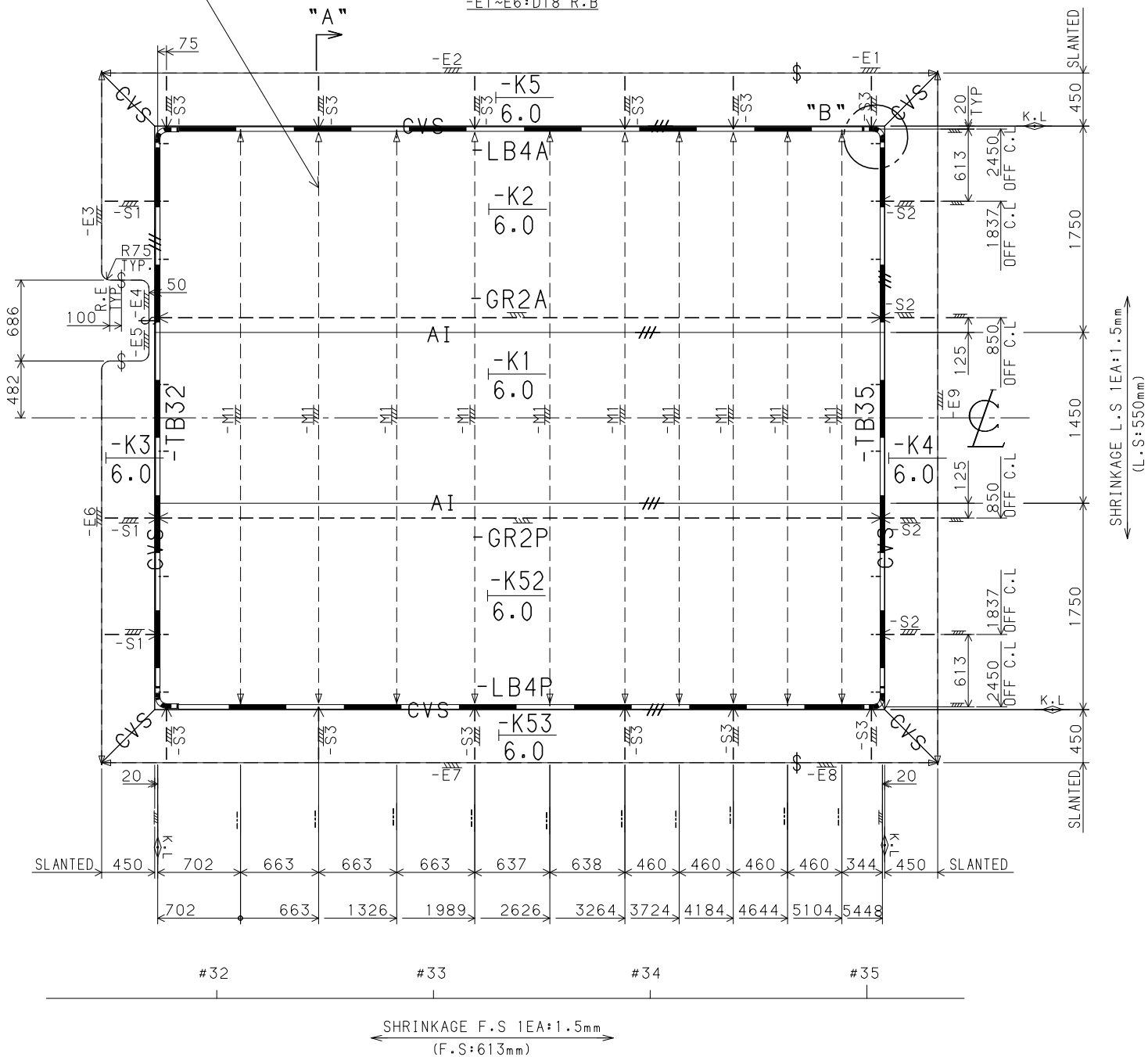
# PILOT HOUSE

(13050 A/B)

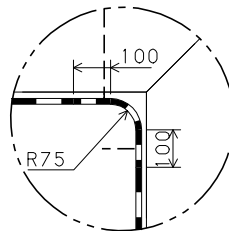
905-DK1

-M1:75X50X7.0 U.A  
-S1~S3:75X6.0 F.B  
-E1~E6:D18 R.B

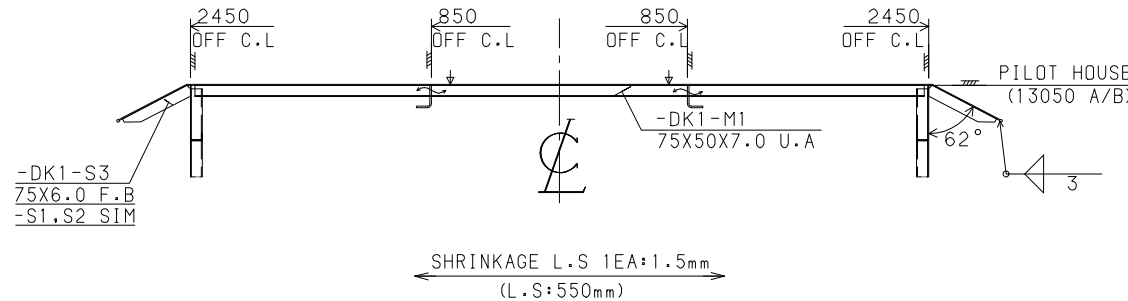
TYP. HOUSE  
TOP TRSVS



"B" DET.

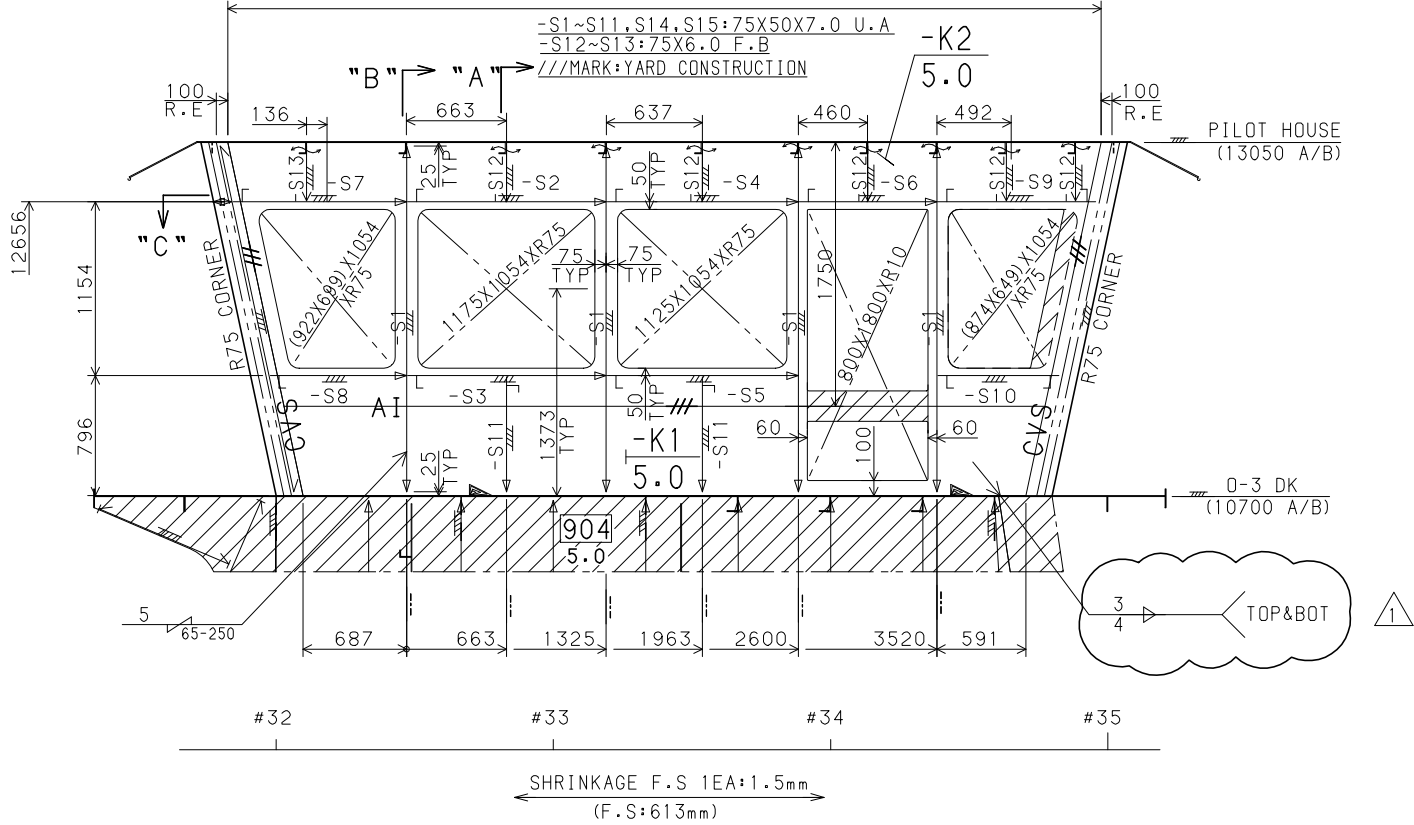


"A" SEC.

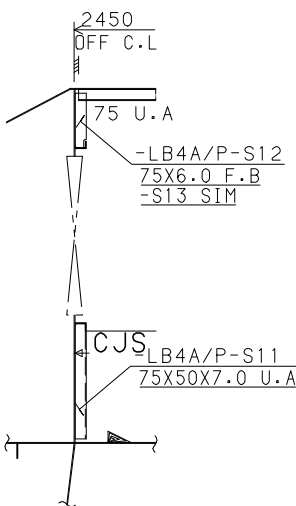


SIDE WALL

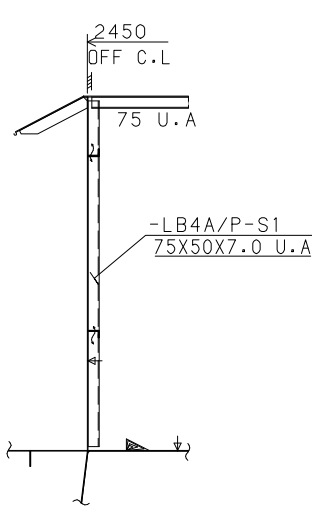
905-LB4A/P



"A" SEC

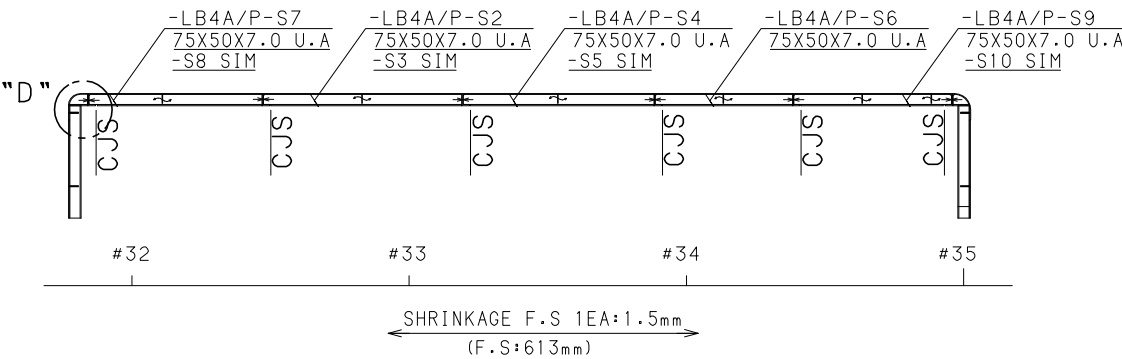


"B" SEC



"C" PLAN

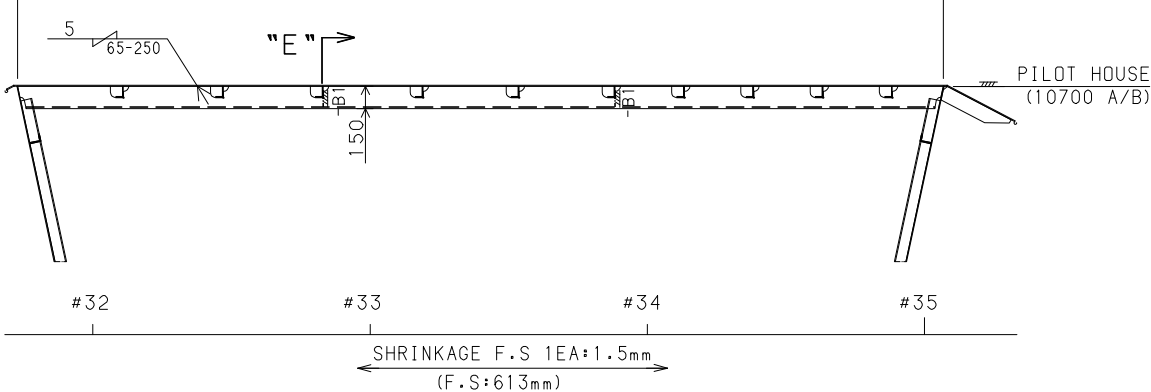
(12681 A/B)



850 OFF C.L (P/S)

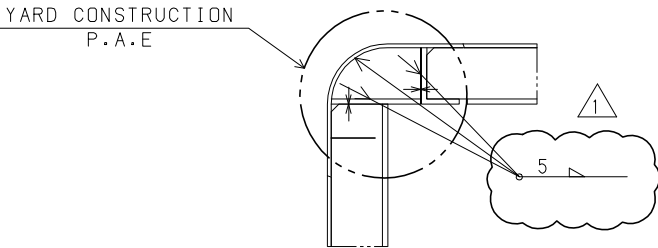
905-GR2A/P

-A: 10.0 80 FL



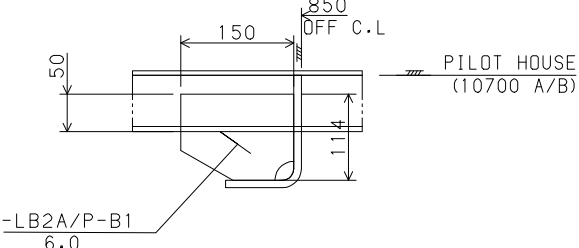
"D" DET.

(SC=1/10)



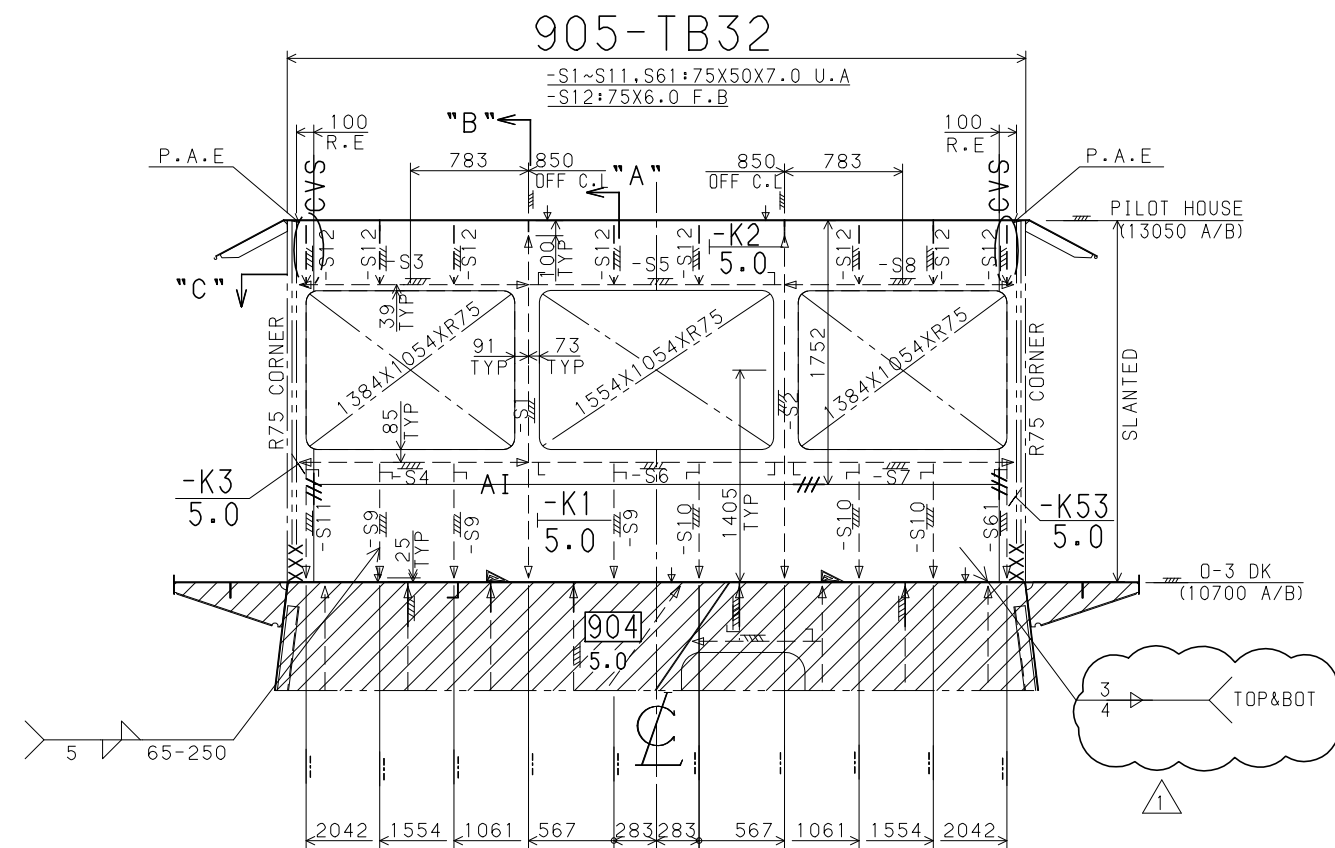
"D" SEC

(SC=1/10)

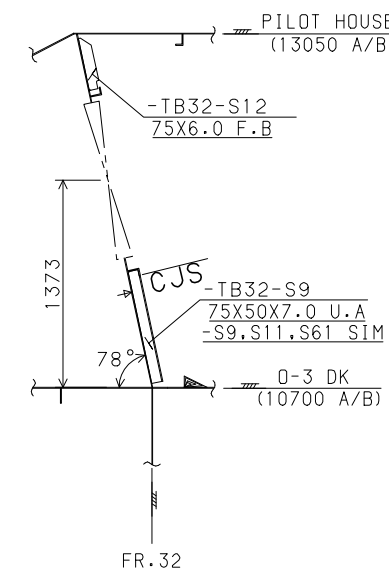


# FR. 32 SEC.

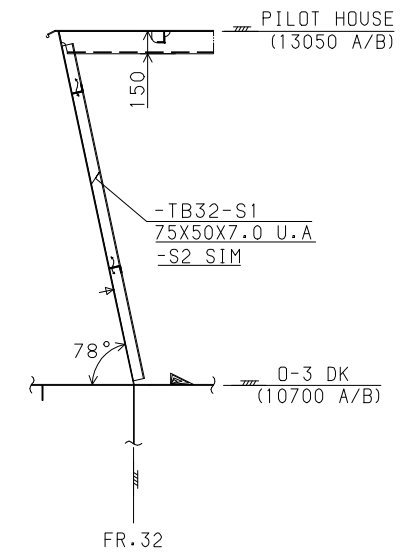
THE STB'D IS SIM. TO PORT (EX. AS SHOWN)



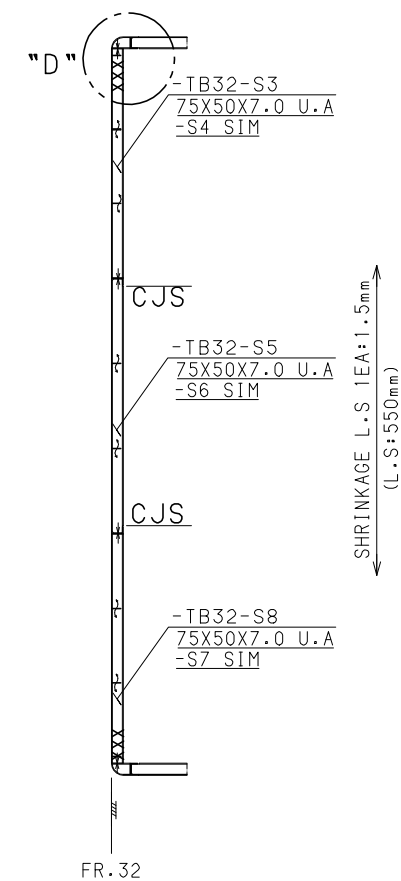
## "A" ELEV.



## "B" ELEV.



## "C" PLAN.



## "D" DET.

