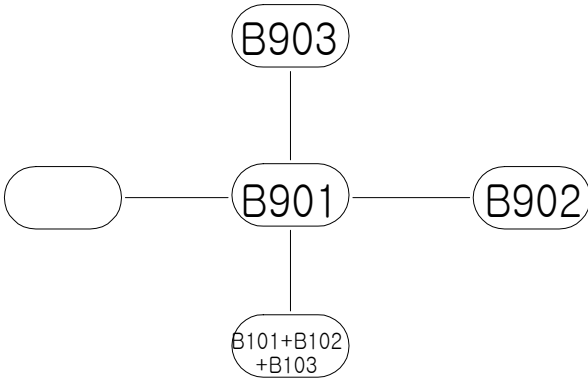


NOTES

1. BOTH SIDE ARE SYMMETRIC EXCEPT AS SHOWN.
2. ALL SECTIONS ARE SHOWN LOOKING FORWARD EXCEPT AS NOTED.
3. ALL ELEVATIONS ARE SHOWN LOOKING PORT SIDE EXCEPT AS NOTED.
4. WELD BEAD TO BE CHIPPED IN WAY OF NO SCALLOP OF A CROSS THE WELDING LINE.
5. WELDING LEG LENGTH IS (5.0). EXCEPT AS SHOWN.
6. NO MARKED STEEL TO BE GRADE "A". ="AH32". ="DH36" ="EH36"
 ="ZAH32" TO BE HIGHER TENSIL STEEL.
7. WHERE LONG'L DECK BEAMS PASS THROUGH SLOTTED FRAMES, BHDS,
 OR GIRDERS, THERE IS TO BE A PAIR OF MATCHED INTERMITTENT WELDS ON
 EACH SIDE OF SUCH INTERSECTION AND 150mm DBL CONT AT ENDS
8. WHERE LONG'L DECK BEAMS PASS THROUGH SLOTTED FRAMES, BHDS, OR GIRDERS,
 THERE IS TO BE A PAIR OF MATCHED INTERMITTENT WELDS ON EACH SIDE OF SUCH
 INTERSECTION AND 150mm DBL CONT AT ENDS.
9. WHERE LONG'L MEMBERS (EXCEPT FOR DECK BEAMS) PASS THROUGH SLOTTED
 FRAMES OR BHDS THERE IS TO A 150mm DOUBLE CONTINUOUS WELD AT SUCH
 INTERSECTION AND AT THEIR ENDS .
10. WHERE BEAMS, STIFF, FRAMES etc. (EXCEPT LONG'L MEMBERS) PASS THRU SLOTTED
 GIRDERS , SHELVES OR STRINGERS, THERE IS TO BE A PAIR OF MATCHED
 INTERMITTENT WELDS ON EACH SIDE OF SUCH INTERSECTIONS, AND THE BEAMS,
 STIFFENERS AND FRAMES ARE TO BE EFFICIENTLY ATTACHED TO THE GIRDERS,
 SHELVES AND STRINGERS.

ERECTION SEQUENCE



BLOCK WEIGHT (TON)		P		C		S		TOTAL (19)SHEETS WITH A COVER	
SHIP NO.				SHIP TYPE					
EN5430				ENABOL 5430 BHP TOWBOAT					
PRODUCTION DESIGN			TEL .			BLOCK NAME			
APPROVED					<div>B901 BLOCK</div> <div>(FR.20-300 ~ FR29-750)</div>				
CHECKED									
CHECKED	Y.S SHIN								
DRAWN	Y.I SEO								
GMB Inc				SCALE		DWG NO.			
				DATE		REV.NO.			
586-1, Seonam-dong Nam-gu, Ulsan, Korea						<div>B901-01-TITLE</div> <div><div></div>2</div>			

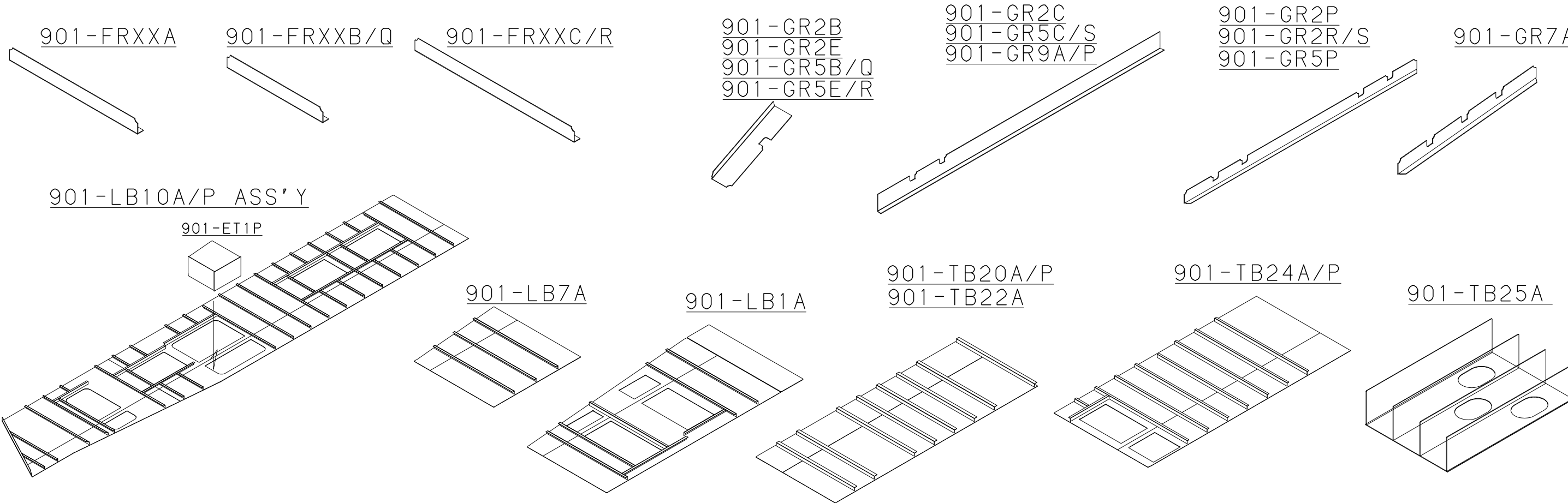
DATE	REV NO	DESCRIPTION	SHOP	PAGE	APPROVAL		
					DRAW	CHECK	APPR
	<div>0</div>	ISSUED TO YARD					
	<div>1</div>	-ADD PIPE HOLE & REV. TEXT					
	<div>2</div>	-DRAIN HOLE REV.		4			
<div>NOTED</div>							
<div>DIVISION</div> <div>ERECTION</div>		0. X	P.E BLOCK	BLOCK COMPOSITION		BASE	
UNIT ERECT						NOMAL	
PRE ERECT							
ERECT							

B901 BLOCK PROCESS

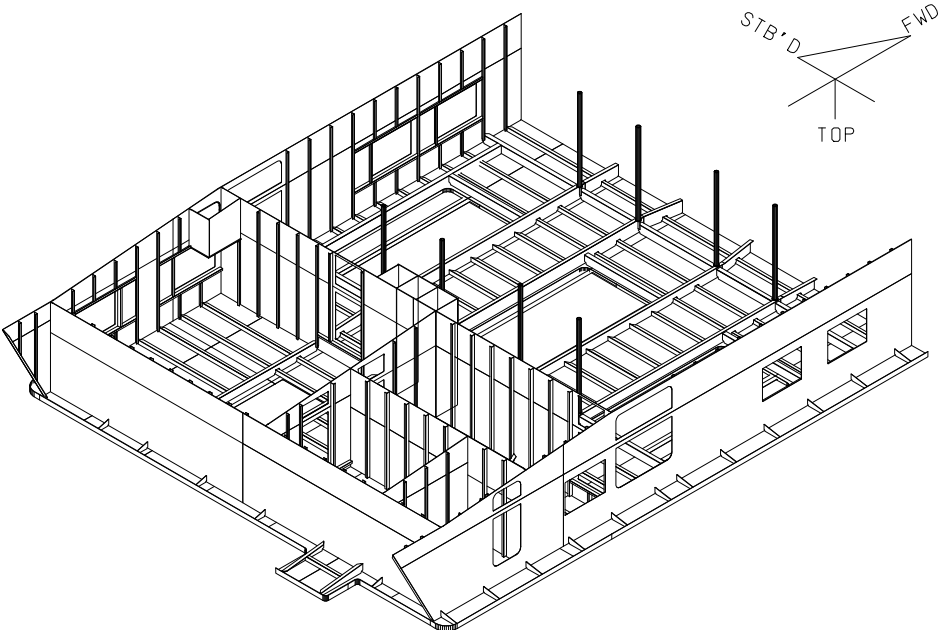
GMB

BLOCK NO.
PAGE

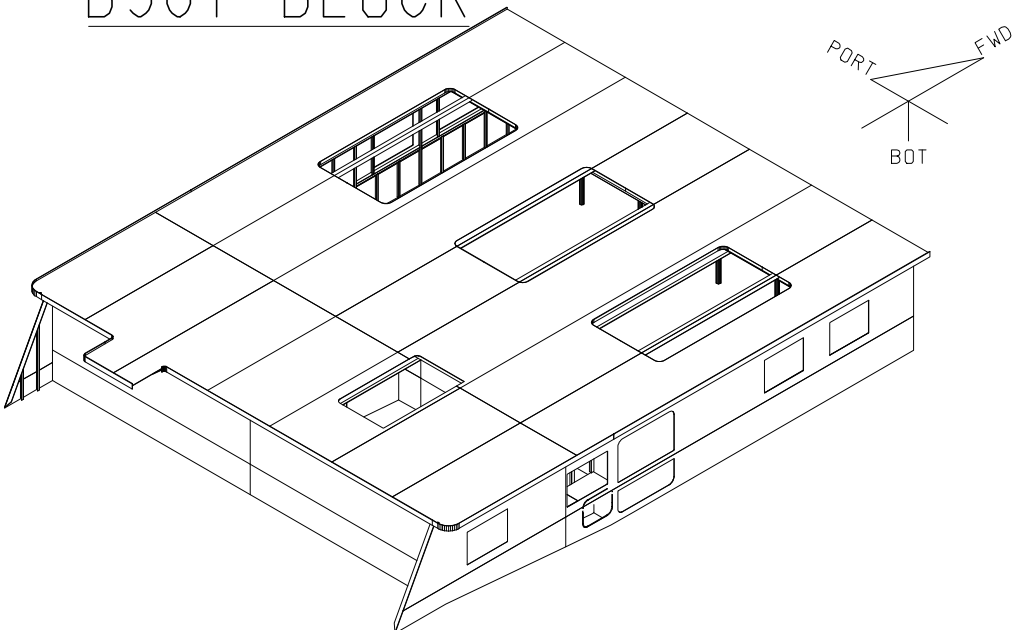
B901
1 / 18



901-DK1 ASS'Y



B901 BLOCK



901 BLK ANALYSIS

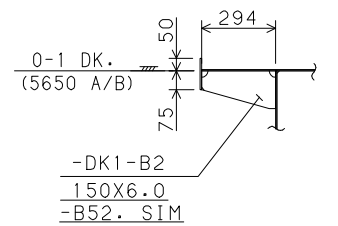
901-1		
1-1	DK1/G(1) __PG.0	
-1		
-2	FR25A/S(1) __PG.0	
-2	FR25B/S(1) __PG.0	
-2	FR25Q/S(1) __PG.0	
-2	FR25C/S(1) __PG.0	
-2	FR25R/S(1) __PG.0	
-2	FR27A/S(1) __PG.0	
-2	FR27B/S(1) __PG.0	
-2	FR27Q/S(1) __PG.0	
-2	FR28A/S(1) __PG.0	
-2	FR28B/S(1) __PG.0	
-2	FR28Q/S(1) __PG.0	
-2	FR28C/S(1) __PG.0	
-2	FR28R/S(1) __PG.0	
-2	GR2B/S(1) __PG.0	
-2	GR2C/S(1) __PG.0	
-2	GR2E/S(1) __PG.0	
-2	GR2P/S(1) __PG.0	
-2	GR2R/S(1) __PG.0	
-2	GR2S/S(1) __PG.0	
-2	GR5B/S(1) __PG.0	
-2	GR5C/S(1) __PG.0	
-2	GR5E/S(1) __PG.0	
-2	GR5P/S(1) __PG.0	
-2	GR5Q/S(1) __PG.0	
-2	GR5R/S(1) __PG.0	
-2	GR5S/S(1) __PG.0	
-2	GR7A/S(1) __PG.0	
-2	GR9A/S(1) __PG.0	
-2	GR9P/S(1) __PG.0	
-2	LB10A/S(1) __PG.0	
-2	LB10P/M(1) __PG.0	
-1		
-3	ET1P/S(1) __PG.0	
-2	LB1A/S(1) __PG.0	
-2	LB7A/S(1) __PG.0	
-2	TB20A/S(1) __PG.0	
-2	TB20P/S(1) __PG.0	
-2	TB22A/S(1) __PG.0	
-2	TB24A/S(1) __PG.0	
-2	TB24P/S(1) __PG.0	
-2	TB25A/S(1) __PG.0	
-2	TB25P/S(1) __PG.0	

ASSEMBLY_NO	WEIGHT (Kg)	COG_X (M)	COG_Y (M)	COG_Z (M)	ASSY_AREA (M) w)	
901	18.470,	14.604,	0.122,	5.050,	649.364, (ASS'Y only)	
DK1	18.470,	14.604,	0.122,	5.050,	649.364, (297.530)
FR25A	0.042,	15.636,	-0.003,	5.498,	1.330, (1.330)
FR25B	0.031,	15.636,	1.927,	5.497,	0.991, (0.991)
FR25Q	0.031,	15.636,	-1.927,	5.497,	0.991, (0.991)
FR25C	0.052,	15.636,	4.115,	5.498,	1.646, (1.646)
FR25R	0.052,	15.636,	-4.115,	5.498,	1.646, (1.646)
FR27A	0.042,	19.644,	-0.003,	5.498,	1.330, (1.330)
FR27B	0.042,	19.674,	3.851,	5.498,	1.325, (1.325)
FR27Q	0.042,	19.674,	-3.851,	5.498,	1.325, (1.325)
FR28A	0.042,	21.156,	-0.003,	5.498,	1.330, (1.330)
FR28B	0.031,	21.156,	1.927,	5.497,	0.991, (0.991)
FR28Q	0.031,	21.156,	-1.927,	5.497,	0.991, (0.991)
FR28C	0.052,	21.156,	4.115,	5.498,	1.646, (1.646)
FR28R	0.052,	21.156,	-4.115,	5.498,	1.646, (1.646)
GR2B	0.028,	14.951,	0.829,	5.458,	0.877, (0.877)
GR2C	0.136,	18.371,	1.104,	5.460,	4.335, (4.335)
GR2E	0.022,	21.777,	1.031,	5.457,	0.693, (0.693)
GR2P	0.080,	11.402,	-1.104,	5.510,	2.560, (2.560)
GR2R	0.161,	17.846,	-1.104,	5.460,	5.117, (5.117)
GR2S	0.022,	21.777,	-1.031,	5.457,	0.693, (0.693)
GR5B	0.033,	14.690,	2.754,	5.478,	1.061, (1.061)
GR5C	0.138,	18.372,	2.754,	5.458,	4.397, (4.397)
GR5E	0.021,	21.773,	2.754,	5.461,	0.667, (0.667)
GR5P	0.080,	11.402,	-2.754,	5.510,	2.560, (2.560)
GR5Q	0.033,	14.690,	-2.754,	5.478,	1.061, (1.061)
GR5R	0.138,	18.372,	-2.754,	5.458,	4.397, (4.397)
GR5S	0.021,	21.773,	-2.754,	5.461,	0.667, (0.667)
GR7A	0.043,	12.595,	3.305,	5.507,	1.359, (1.359)
GR9A	0.103,	18.382,	4.954,	5.498,	3.286, (3.286)
GR9P	0.103,	18.382,	-4.954,	5.498,	3.286, (3.286)
LB10A	1.812,	15.574,	5.487,	4.385,	61.715, (61.715)
LB10P	1.955,	15.328,	-5.468,	4.369,	66.363, (62.571)
ET1P	0.090,	13.222,	-5.093,	3.703,	3.792, (3.792)
LB1A	0.446,	11.536,	0.563,	4.501,	17.964, (17.964)
LB7A	0.262,	10.212,	3.862,	4.494,	11.099, (11.099)
TB20A	0.721,	9.008,	2.677,	4.539,	24.806, (24.806)
TB20P	0.680,	9.010,	-2.840,	4.519,	22.506, (22.506)
TB22A	0.575,	11.388,	3.001,	4.447,	23.840, (23.840)
TB24A	0.620,	13.784,	2.667,	4.376,	23.599, (23.599)
TB24P	0.620,	13.787,	-2.912,	4.396,	25.613, (25.613)
TB25A	0.532,	14.240,	-0.224,	4.318,	16.974, (16.974)
TB25P	0.099,	14.104,	-0.554,	4.354,	3.151, (3.151)

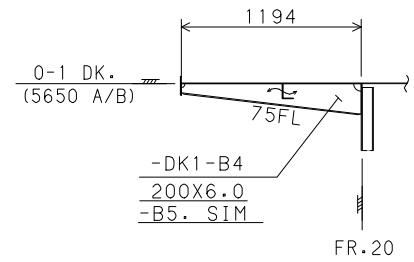
0-1 DK PLAN
(5650A/B)
901-DK1
(SCALE: 1/60)

GMB	BLOCK NO.	B901
	PAGE	4 / 18

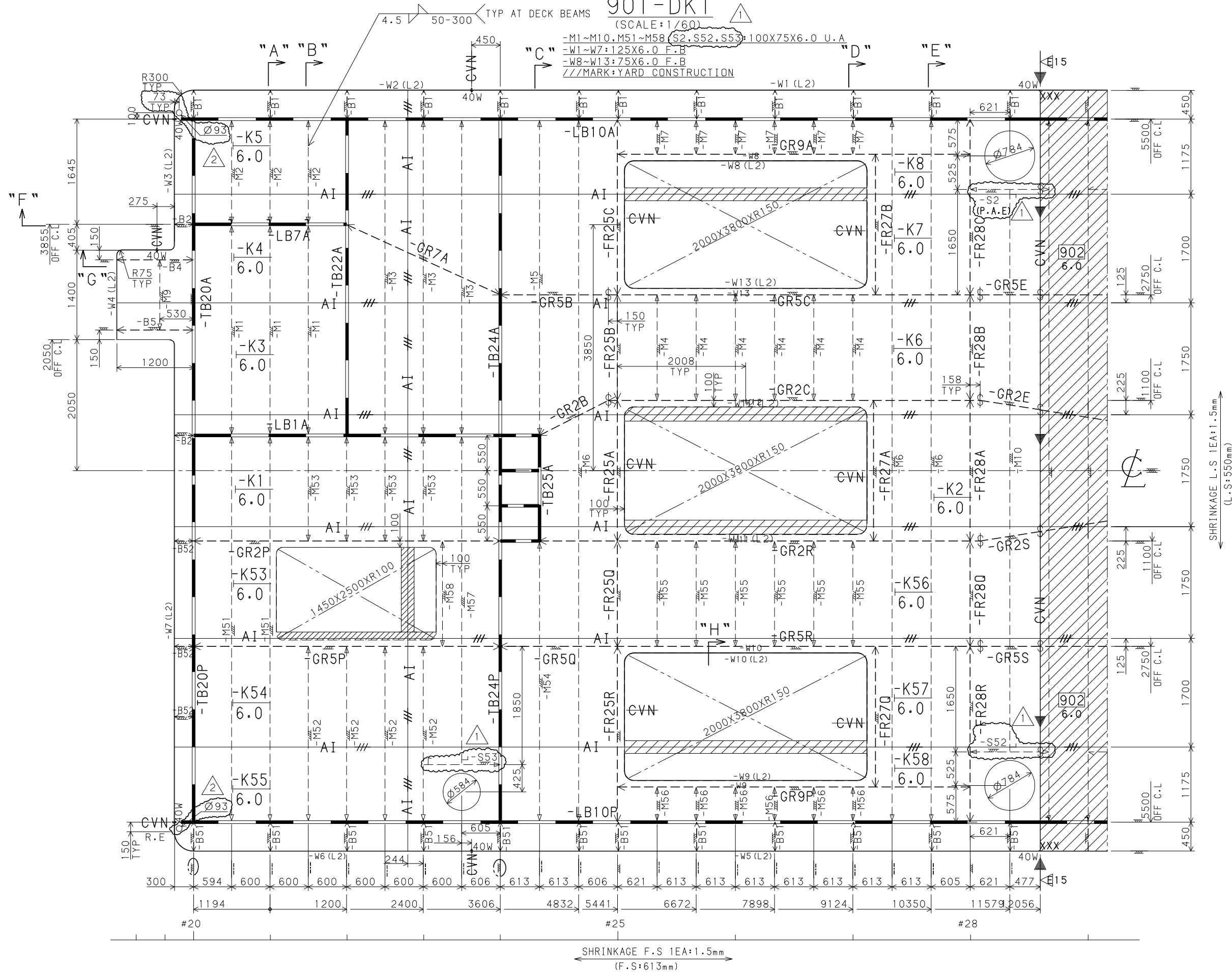
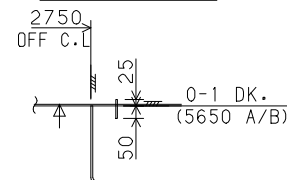
"F" ELEV.
(SCALE: 1/30)

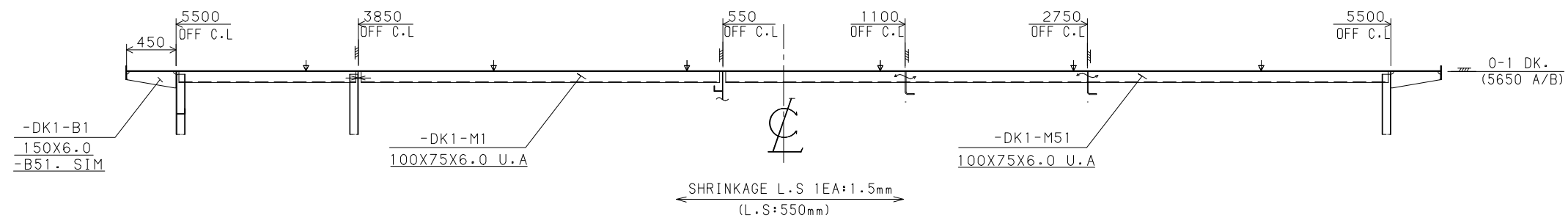
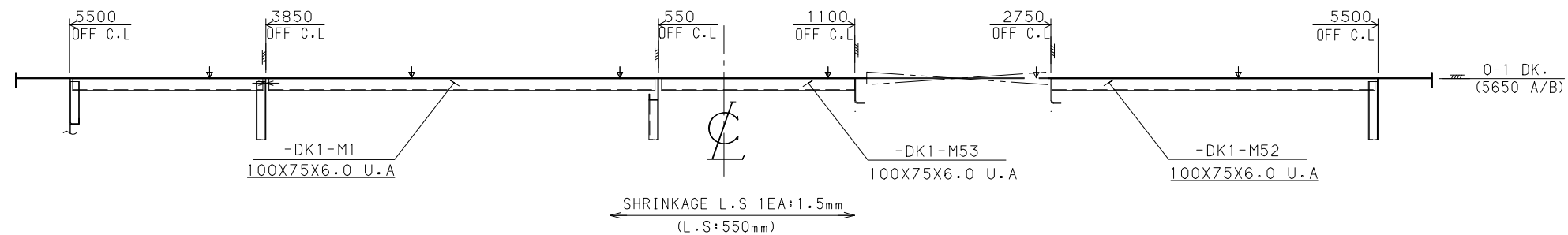
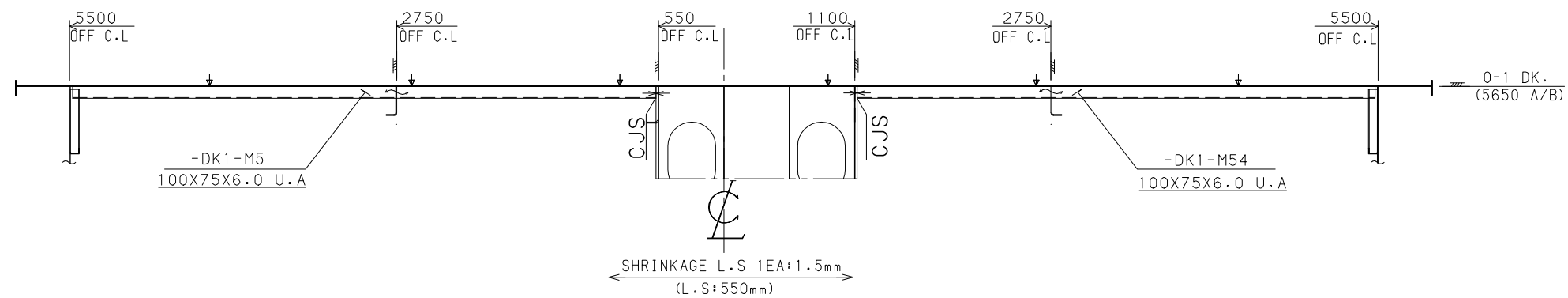


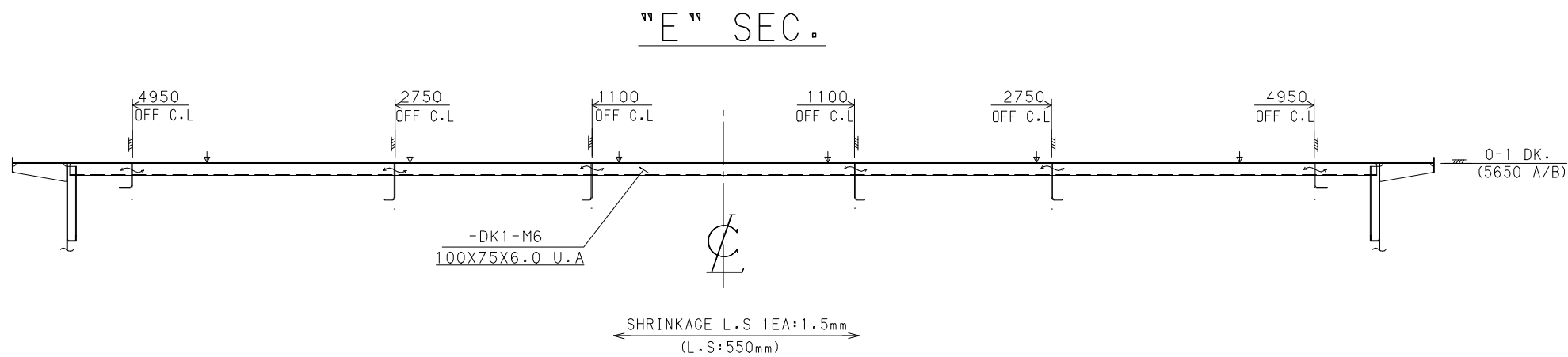
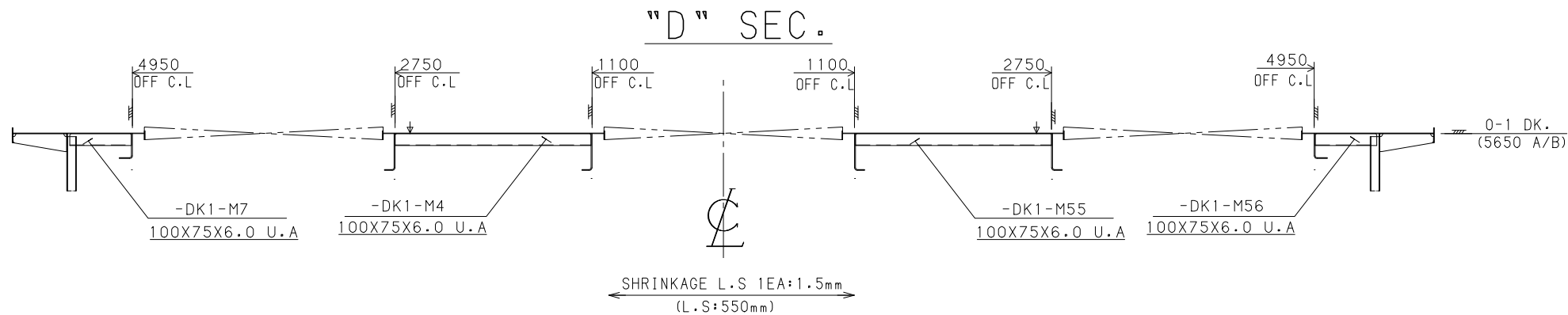
"G" ELEV.

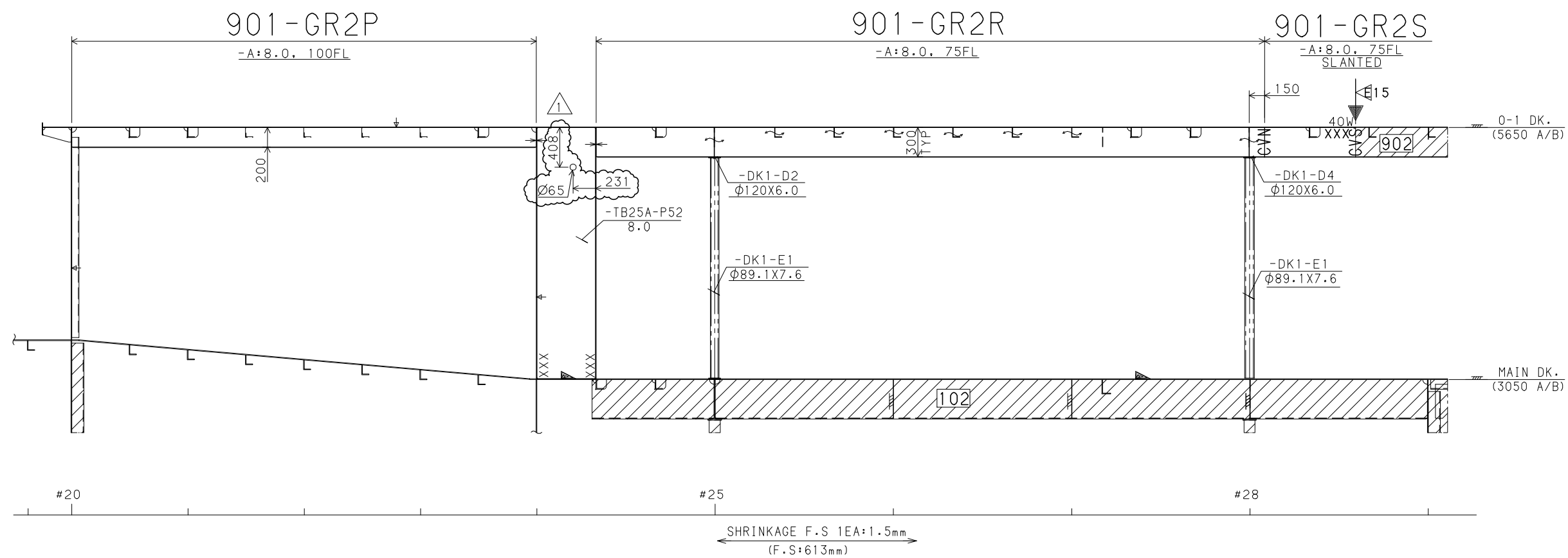


"H" SEC.
(SCALE: 1/30)

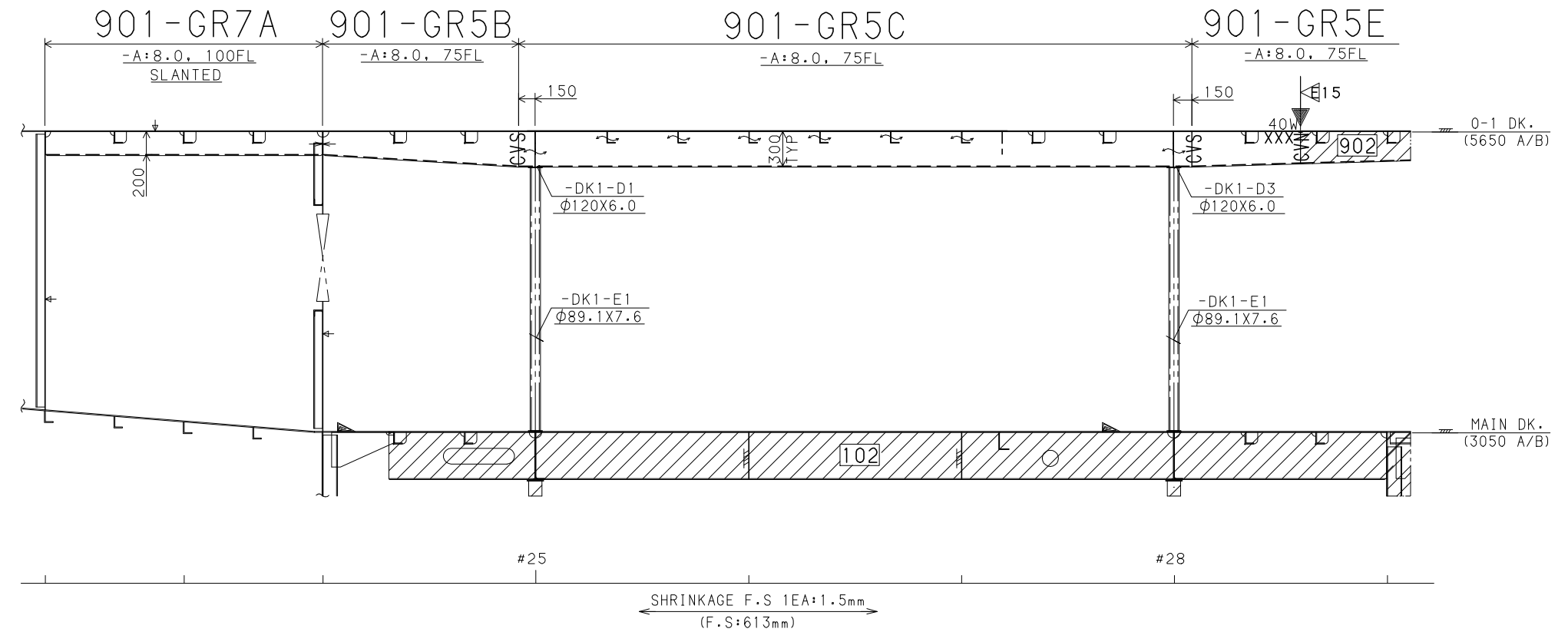


"A" SEC."B" SEC."C" SEC.

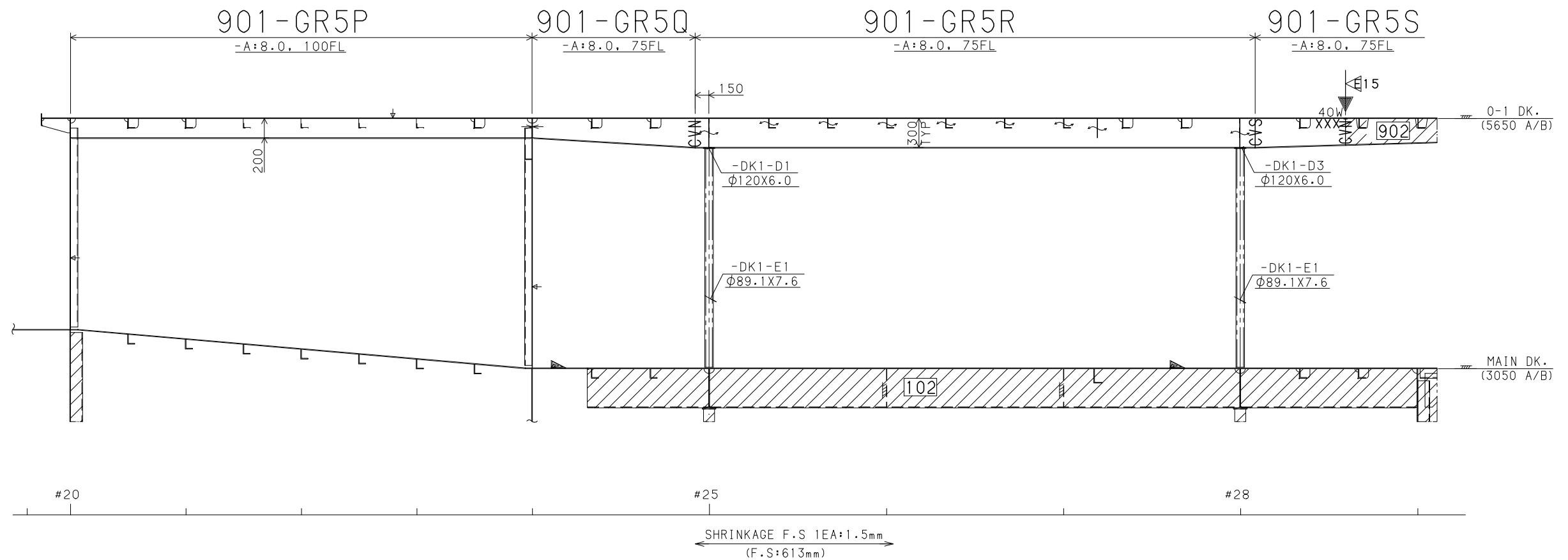


1100 OFF C/L ELEV (S)

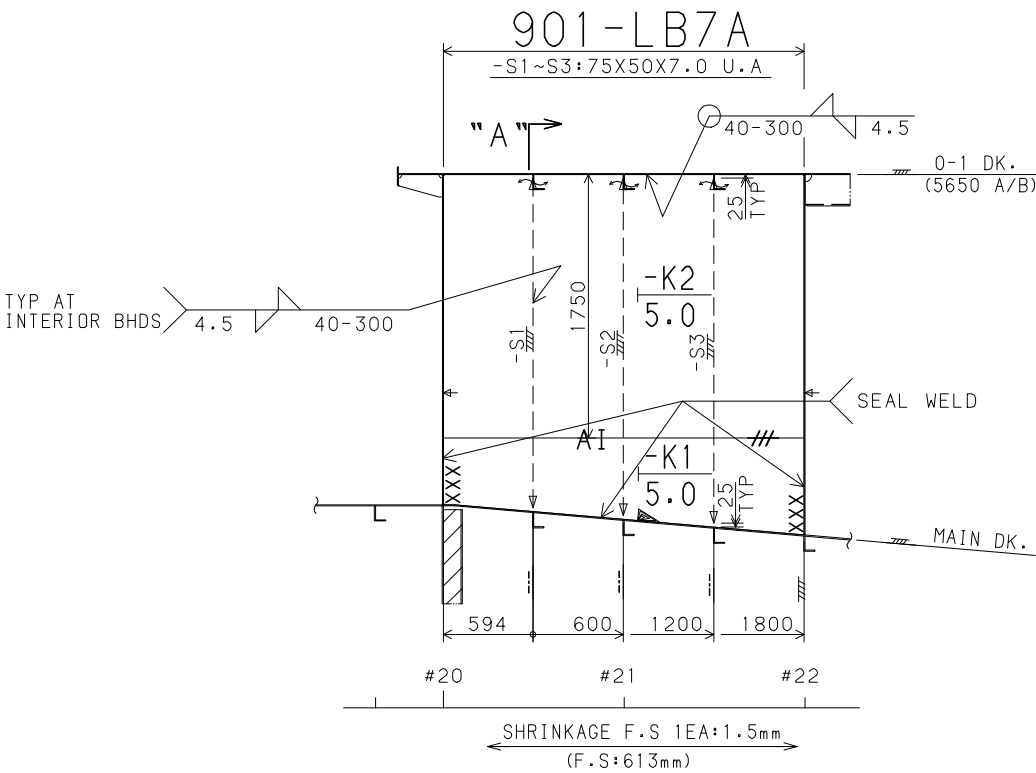
2750 OFF C/L ELEV (P)



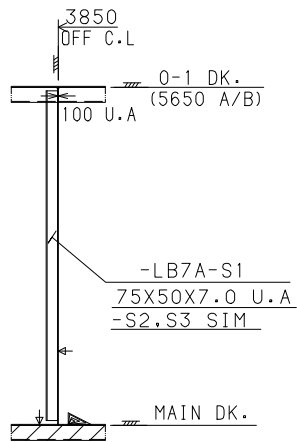
2750 OFF C/L ELEV (S)



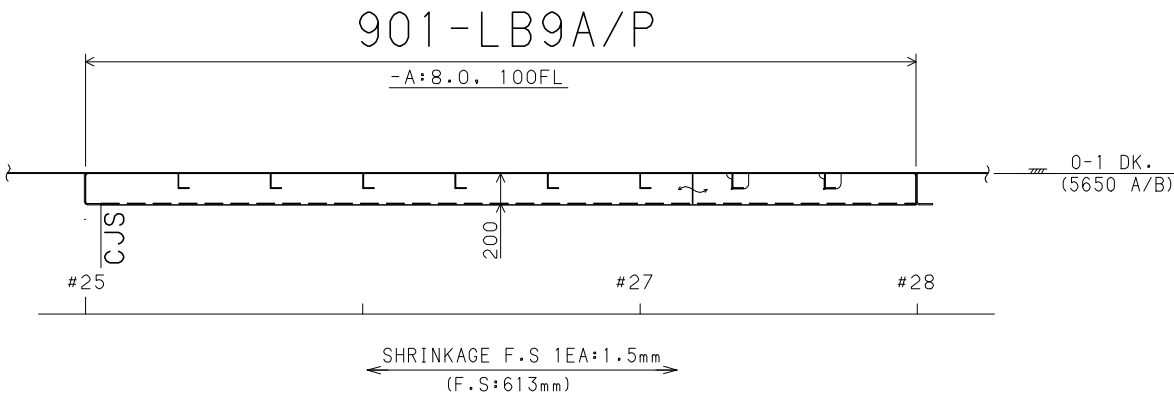
3850 OFF C/L ELEV (P)



"A" SEC.

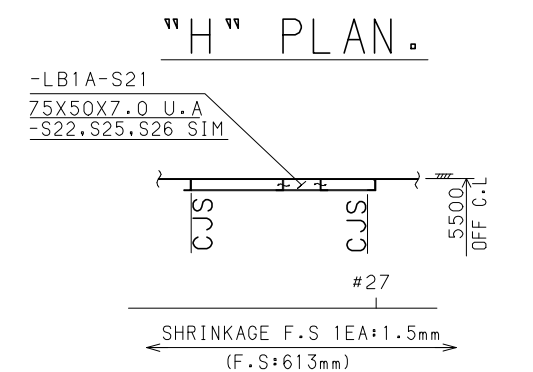
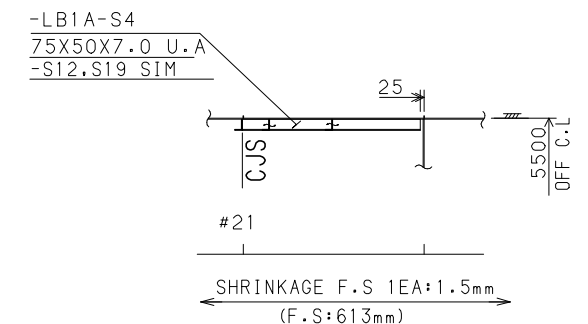
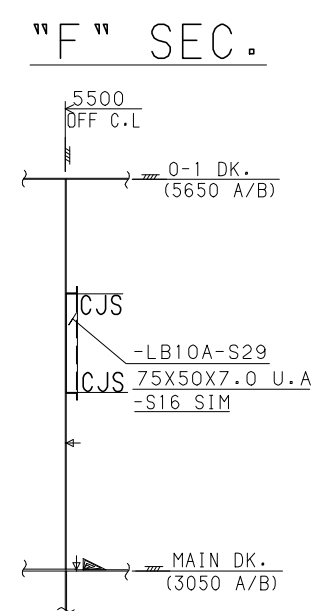
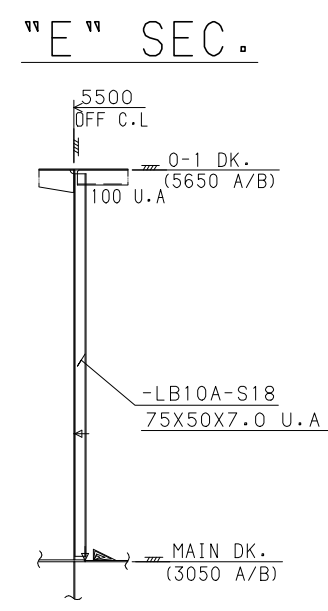
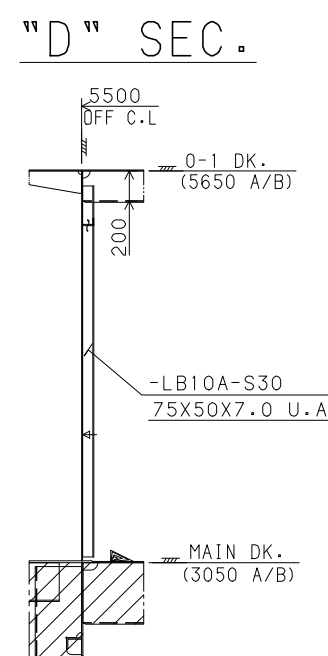
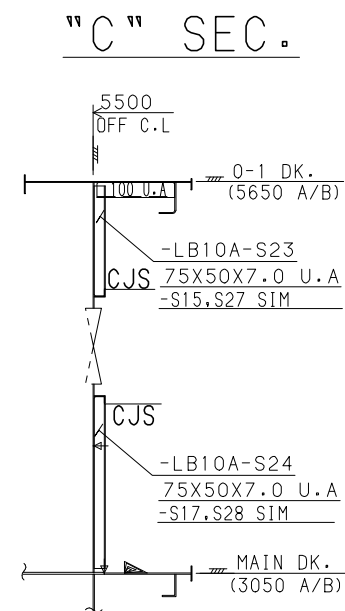
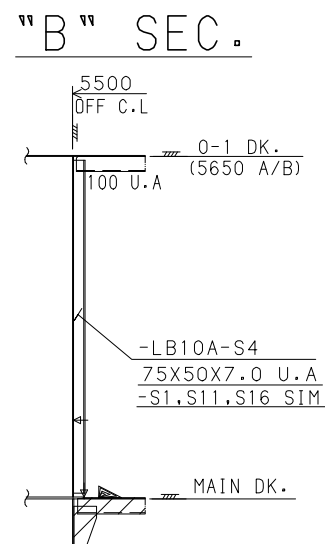
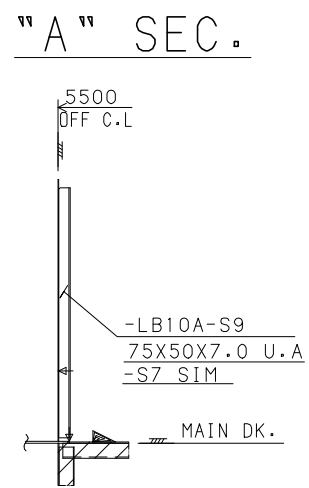
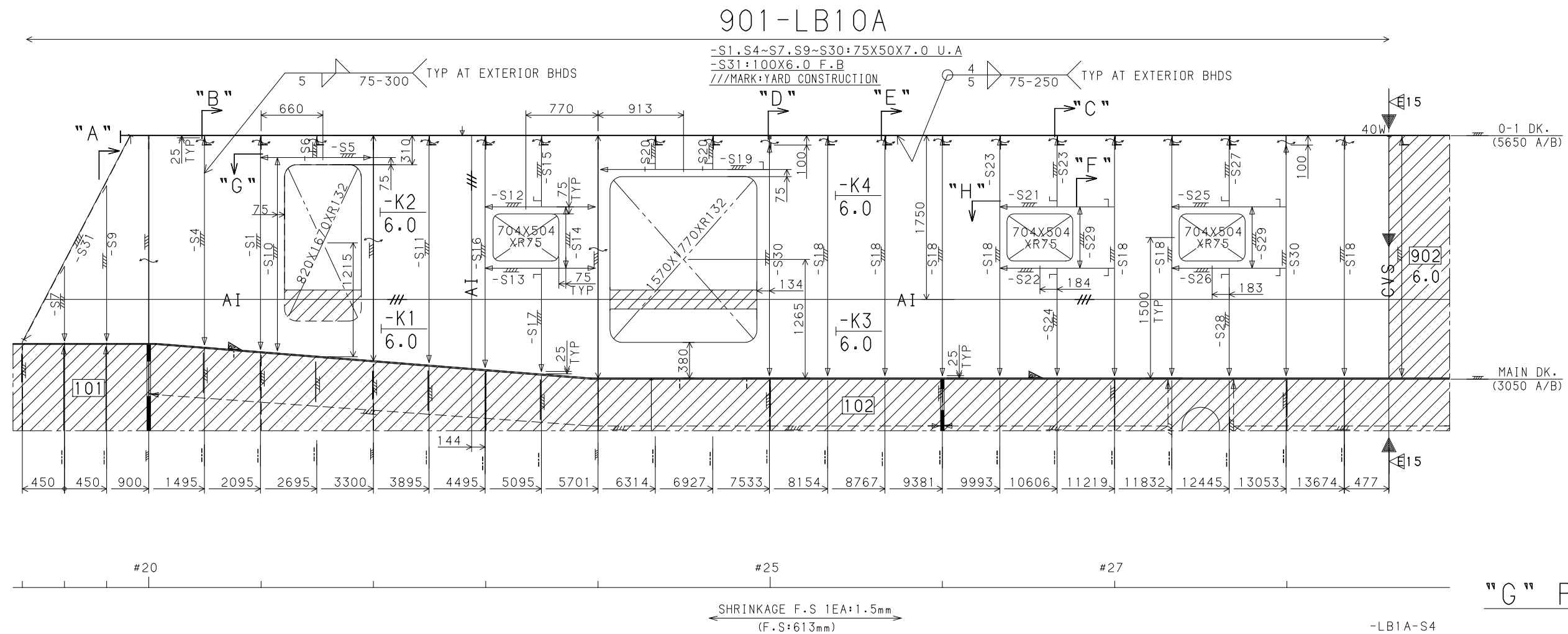


4950 OFF C/L ELEV (P/S)



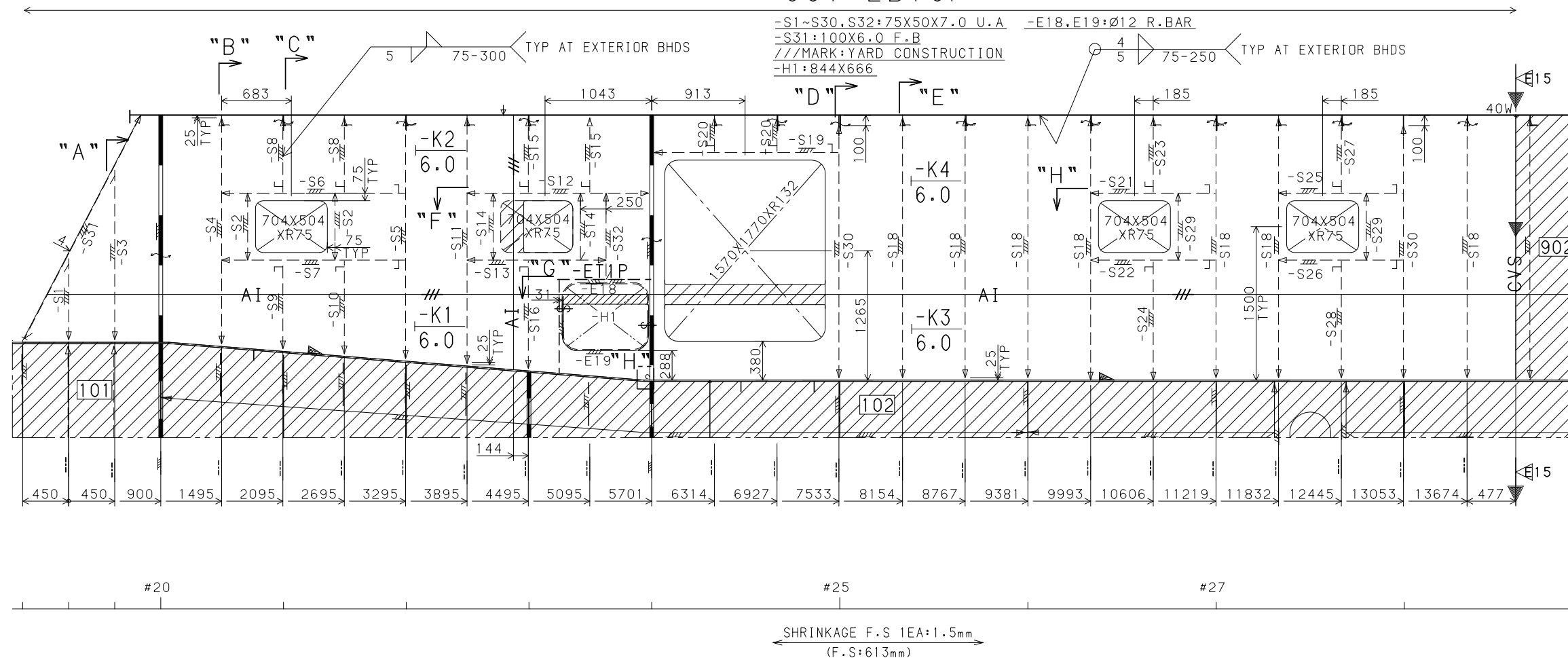
5500 OFF C/L ELEV (P)

GMB	BLOCK NO.	B901
	PAGE	11 / 18

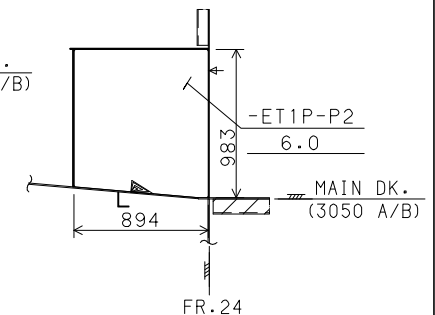


5500 OFF C/L ELEV (S)

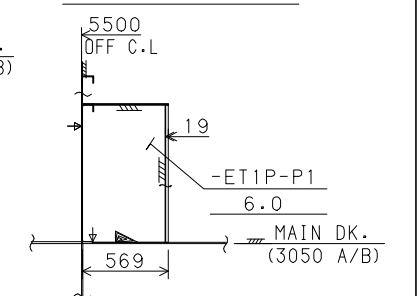
901-LB10P



"I" ELEV.

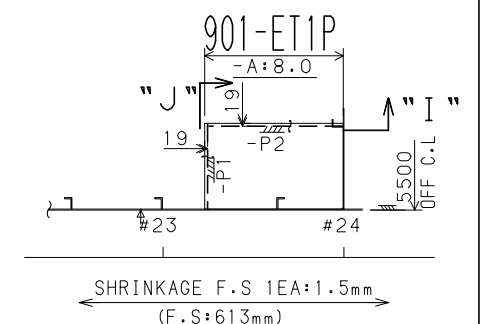


"J" SEC.



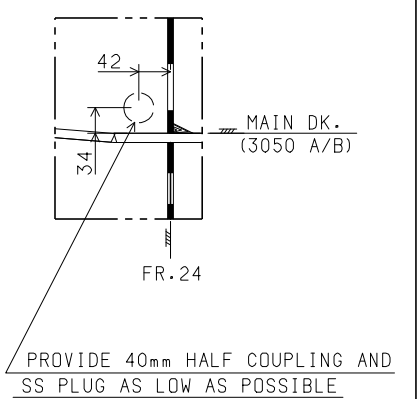
"G" PLAN.

(4047 A/B)

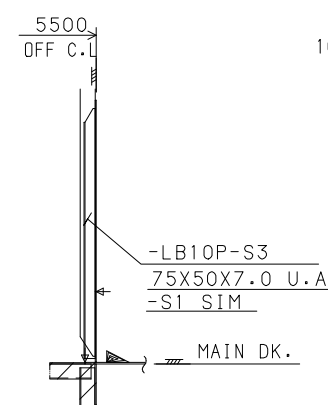


"H" DET.

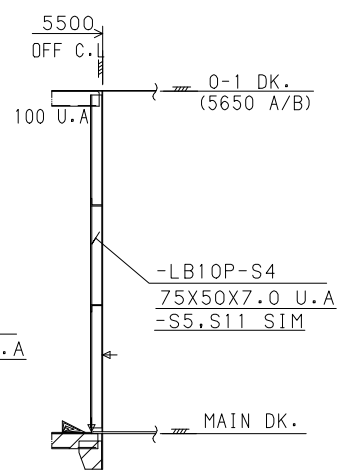
(SC=1/10)



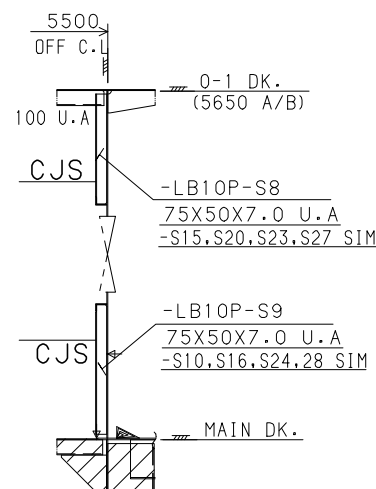
"A" SEC.



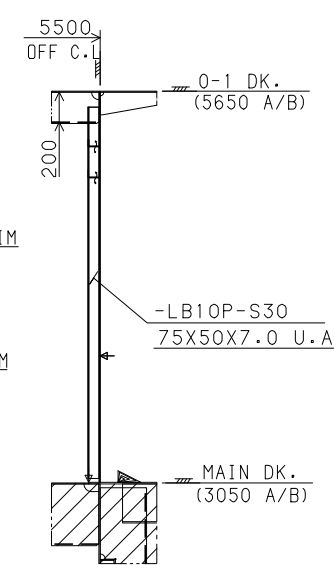
"B" SEC.



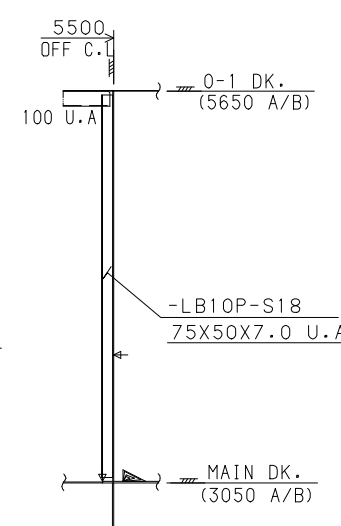
"C" SEC.



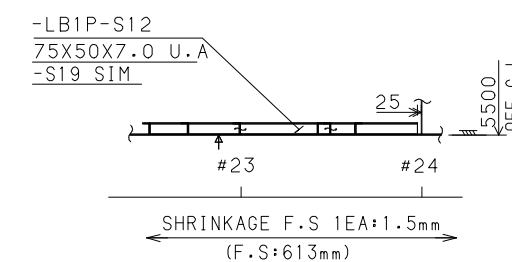
"D" SEC.



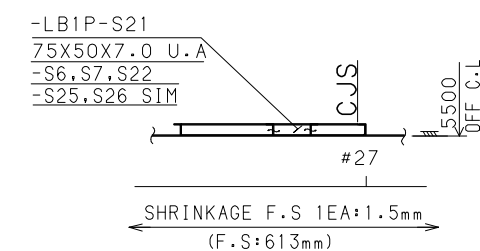
"E" SEC.



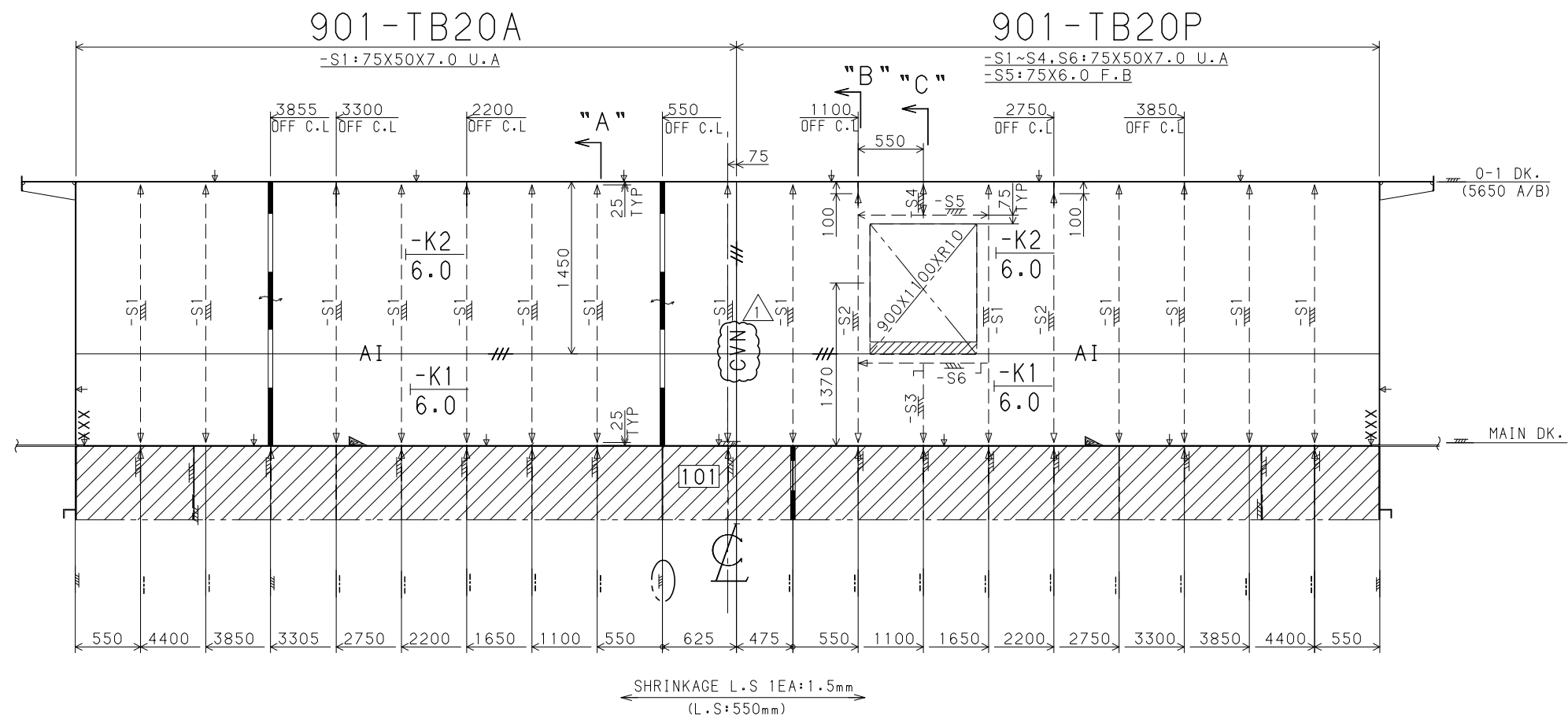
"F" PLAN.



"H" PLAN.



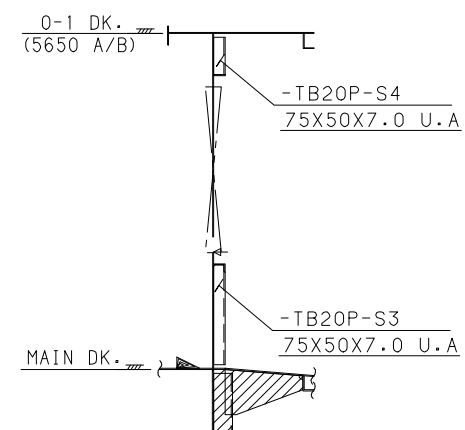
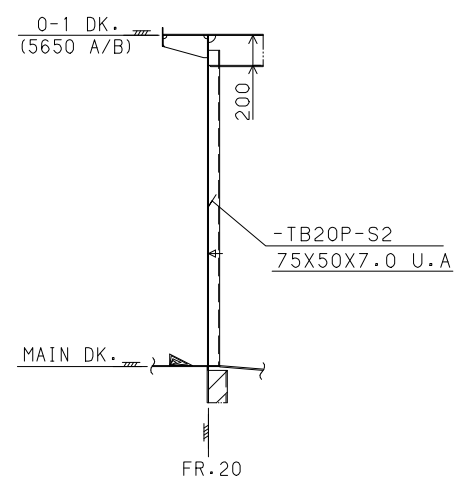
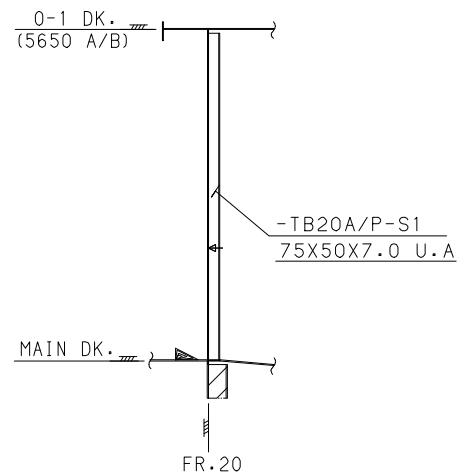
FR. 20 SEC.

THE STB'D IS SIM. TO PORT (EX. AS SHOWN)
///MARK:YARD CONSTRUCTION

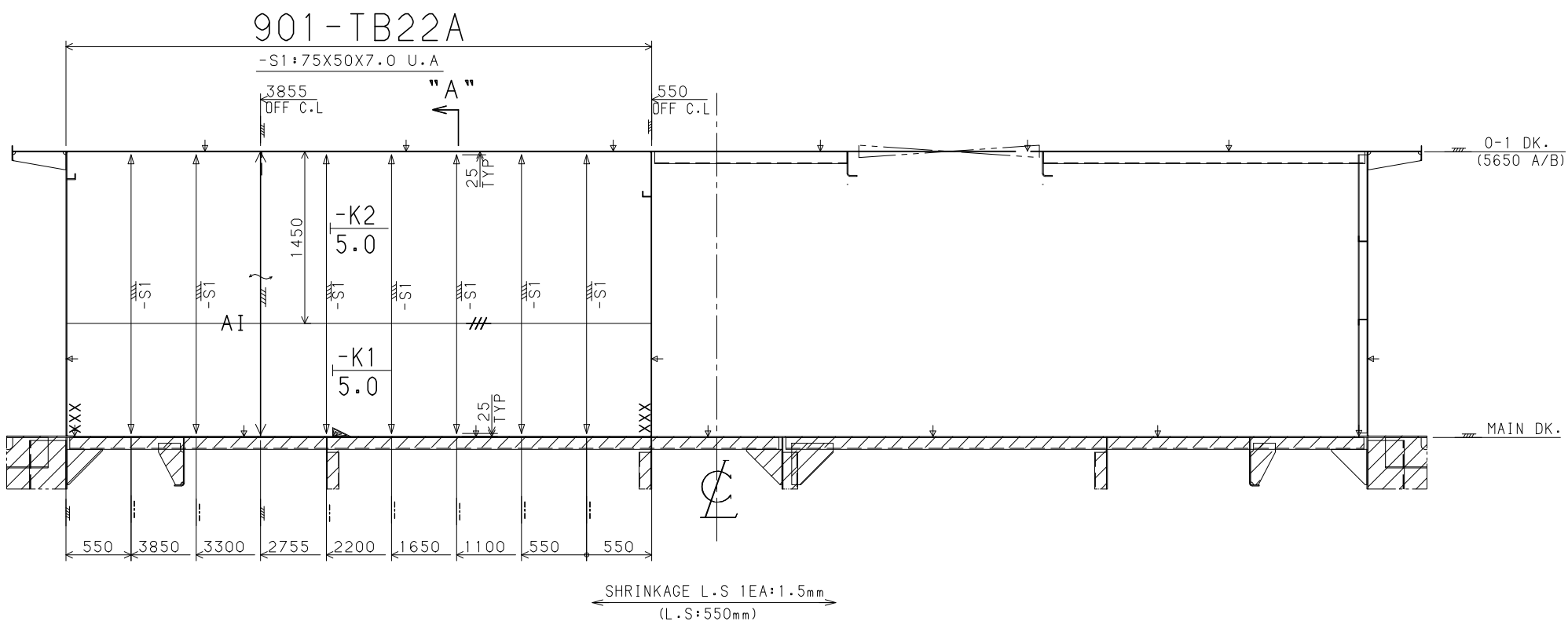
"A" ELEV.

"B" ELEV.

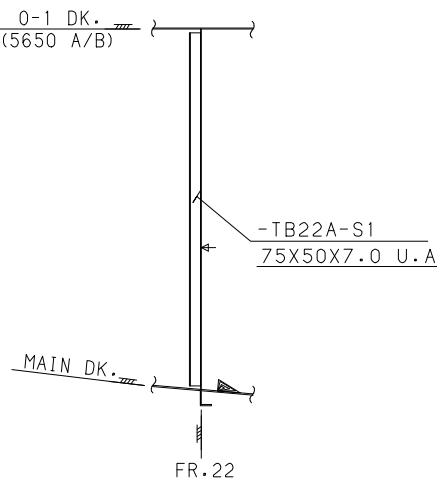
"C" ELEV.



FR. 22 SEC.

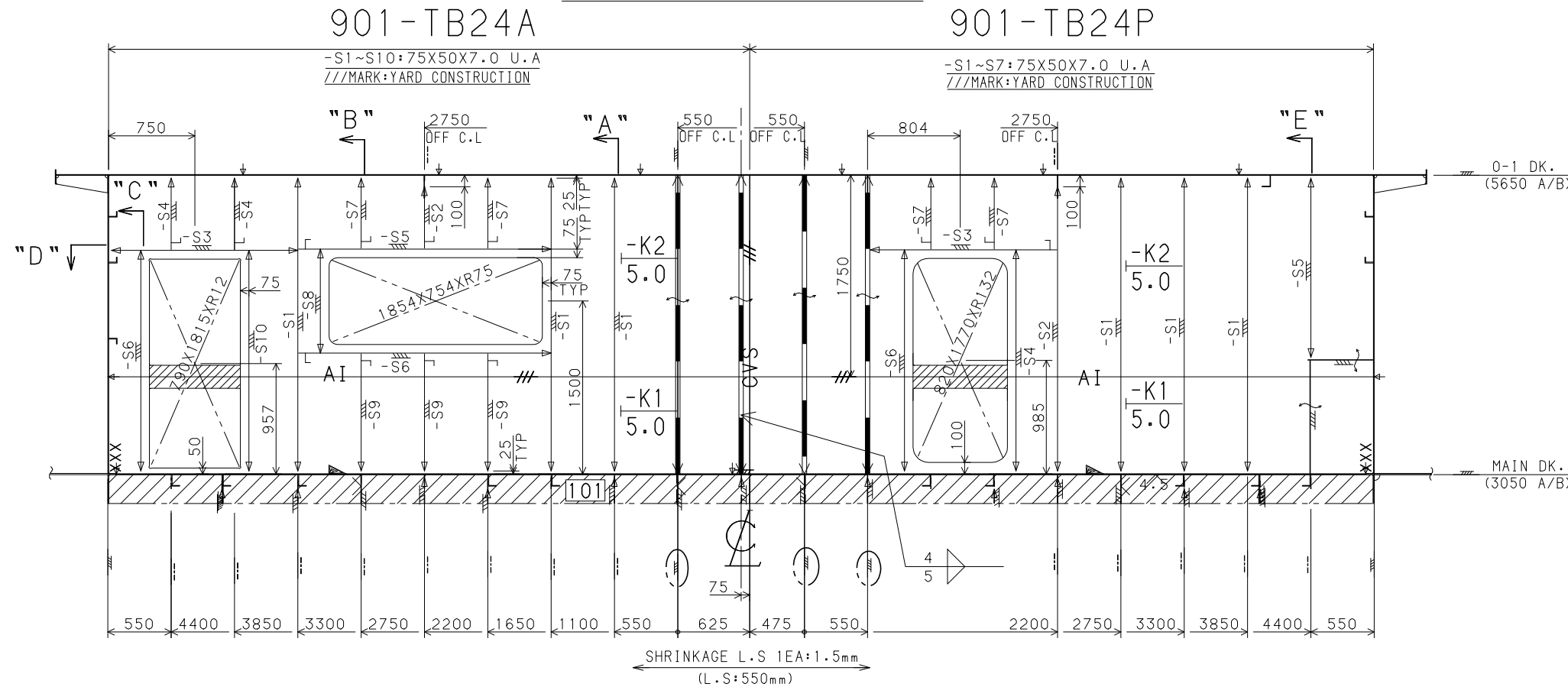


"A" ELEV.



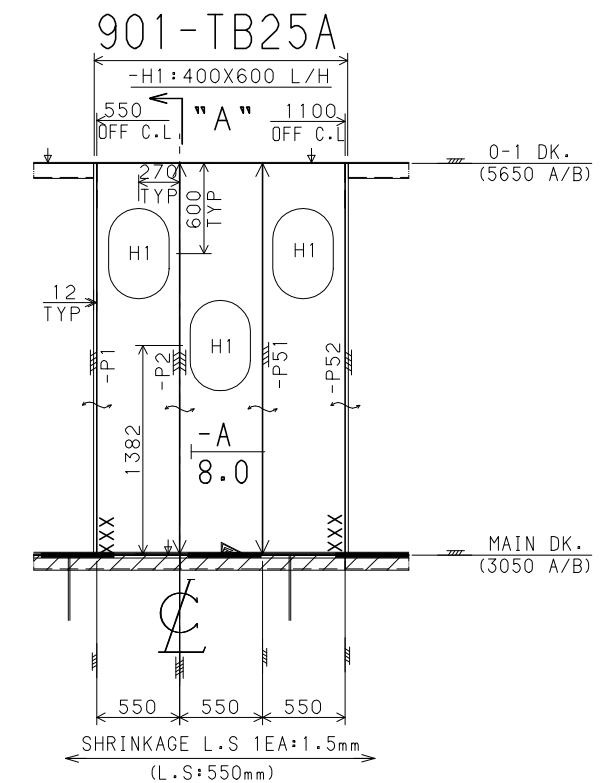
FR. 24 SEC.

THE STB'D IS SIM. TO PORT (EX. AS SHOWN)



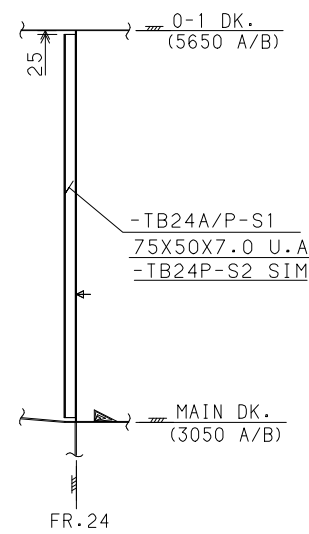
"D" PLAN.

FR. 24+613 SEC.

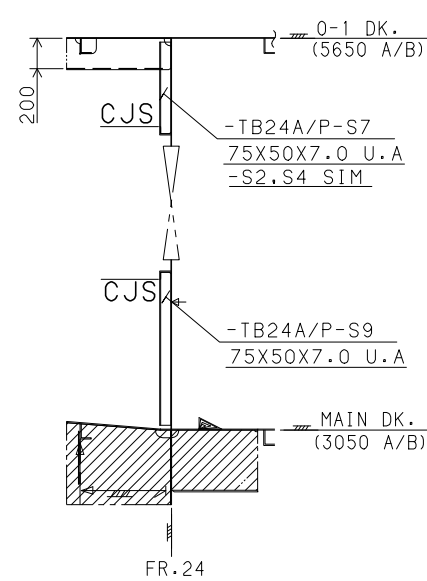


"A" ELEV.

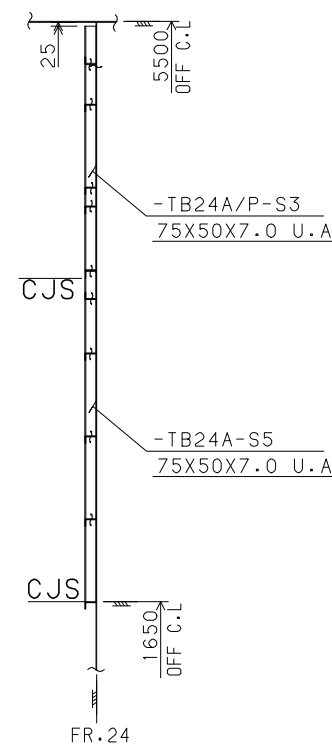
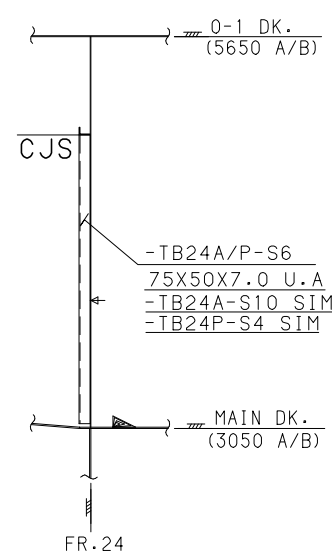
"A" ELEV.



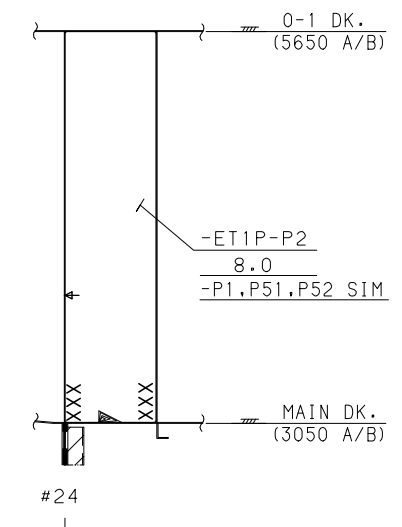
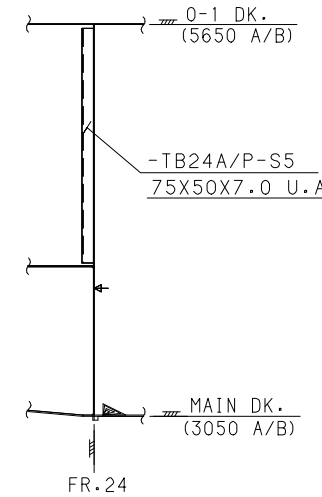
"B" ELEV.



"C" ELEV.

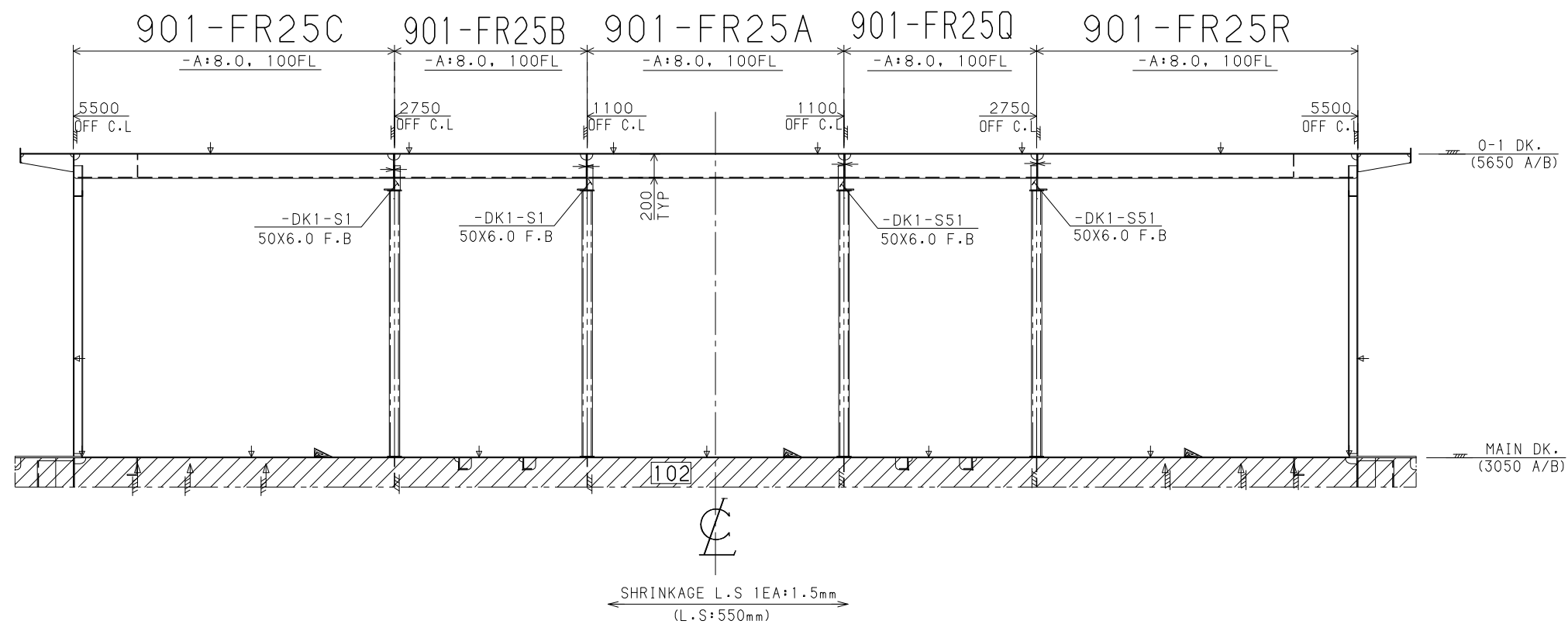


"E" ELEV.



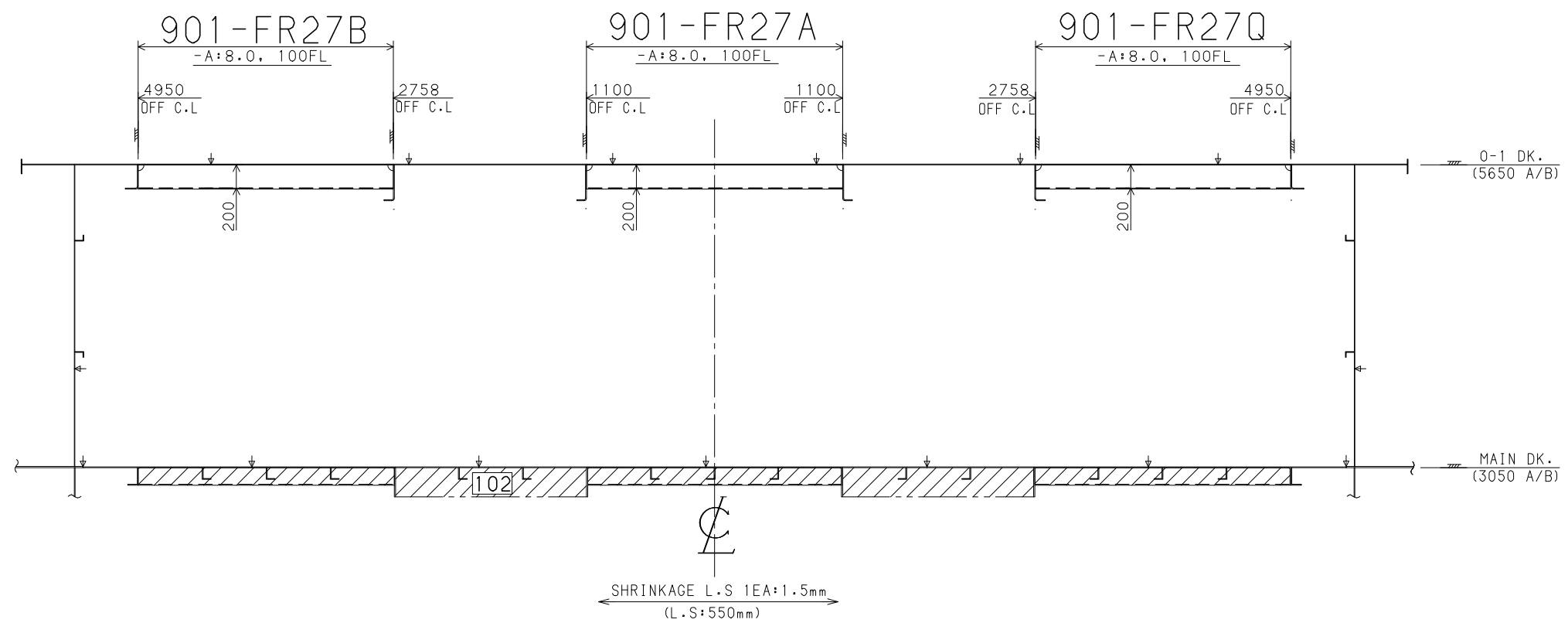
FR. 25 SEC.

THE STB'D IS SIM. TO PORT (EX. AS SHOWN)



FR. 27+350 SEC.

THE STB'D IS SIM. TO PORT (EX. AS SHOWN)



FR. 28 SEC.

THE STB'D IS SIM. TO PORT (EX. AS SHOWN)

