

Globe valves, manually operated

DIN flanges

Ductile cast iron

Ductile cast iron Econ® globe valves with stainless steel trim, pressure rating PN 16, straight pattern, flanged ends acc. to DIN PN 10/16, outside screw & yoke and rising handwheel.

Ductile cast iron valves are frequently used in places where safety considerations prohibit the use of ordinary cast iron.

Application: high pressure hot water, steam, air etc.

For thermal oil, the use of bellow sealed globe valves is preferred

Material specification

Component	Material	EN and/or (DIN)	W.nr.
Body	Ductile cast iron	GJS-400-18-LT (GGG-40.3)	0.7043
Bonnet	Ductile cast iron	GJS-400-18-LT (GGG-40.3)	0.7043
Disc (DN 15 - 200)	Stainless steel	X20Cr13	1.4021
Disc (DN 250 - 350)	Stainless steel	- (X8CrTi18)	1.4502
Seat	Stainless steel	X20Cr13	1.4021
Stem	Stainless steel	X20Cr13	1.4021
Gland	Ductile cast iron	GJS-400-18-LT (GGG-40.3)	0.7043
Gland packing	Graphite		
Bonnet gasket (SS insert)	Graphite		
Handwheel	Cast iron		

Pressure and temperature range

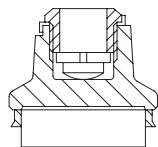
	-10/120 °C	200 °C	250 °C	300 °C	350 °C	400 °C	450 °C	
PN 16	16	14.7	13.9	12.8	11.2	-	-	[bar]

Options

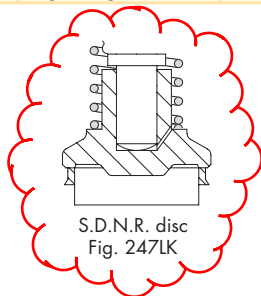
- Angle pattern
- Regulating disc and position indicator
- Balanced disc
- DIN PN 10 flange drilling

Ordering information

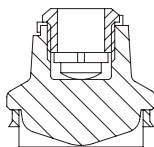
Ordering code	Model	Disc type	DN [mm]	Pressure rating
247	Straight	Fixed disc	15 - 350	PN 16
247LK	Straight	SDNR disc with spring	15 - 350	PN 16
247RK	Straight	Regulating disc	15 - 350	PN 16



Fixed disc
Fig. 247



S.D.N.R. disc
Fig. 247LK



Regulating disc
Fig. 247RK

Dimensions

DN	A	L	H	M	Weight [kg]	Kv value
[mm]						
15	95	130	189	120	3.9	4.2
20	105	150	189	120	4.3	7.4
25	115	160	203	140	5.4	12
32	140	180	203	140	7	19
40	150	200	246	160	9.5	31
50	165	230	254	160	12.9	47
65	185	290	293	180	18.4	77
80	200	310	322	200	24.5	120
100	220	350	381	250	36	188
125	250	400	427	250	56	288
150	285	480	521	400	78	410
200	340	600	643	520	122	725
250	405	730	780	520	247	1145
300	460	850	890	520	336	1635
350	520	980	976	640	451	2220

econosto®



econ®

Pressure rating PN 16 Stainless steel trim

- fig. 247
- fig. 247LK
- fig. 247RK
- DN 15 - 350
- Max. 350 °C
- General use
- Face To Face EN 558-1, 1 (DIN 3202-F1)
- Straight pattern
- Fixed disc, screw-down non-return disc with spring, regulating disc
- Certified material

