



Ref. T4/4.01

MSC.1/Circ.1322
11 June 2009

UNIFIED INTERPRETATIONS OF SOLAS CHAPTER II-2

1 The Maritime Safety Committee, at its eighty-sixth session (27 May to 5 June 2009), with a view to providing more specific guidance for application of the relevant requirements, of the 1974 SOLAS Convention, approved a unified interpretation for SOLAS regulation II-2/4.2.2.3.2 (Oil fuel tank arrangements) prepared by the Sub-Committee on Fire Protection, at its fifty-third session, as set out in the annex.

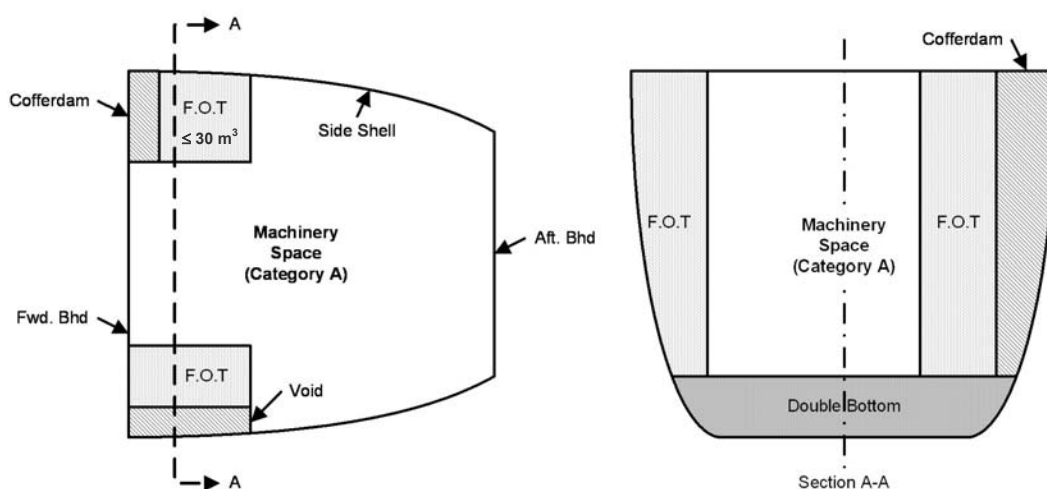
2 Member Governments are invited to use the annexed unified interpretation as guidance when applying SOLAS regulation II-2/4.2.2.3.2 on board ships constructed on or after 29 May 2009 and to bring the unified interpretations to the attention of all parties concerned.

ANNEX

UNIFIED INTERPRETATIONS OF SOLAS CHAPTER II-2

Regulation II-2/4.2.2.3.2 – Oil fuel tanks

Where oil fuel tanks are necessarily located adjacent to or within machinery spaces of category A, at least one of their vertical sides should be contiguous to the machinery space boundaries and the area of the tank boundary common with the machinery spaces should be kept to a minimum. The arrangements in the diagrams below are acceptable provided that the requirements of MARPOL I/12A are met.



Oil fuel tank arrangements