

TRIBON ASSEMBLY PLANNING （船体）

主讲人：吴春峰

2008年4月21日

零件编码的实现方式

- 通过GPS(General Purpose String)赋值
- 通过ASSEMBLY PLANNING(装配计划)实现

装配计划的优点

- 实现编码
- 体现装配信息
- 其他信息的载体
- 易于编辑、修改
- 专业间公用平台

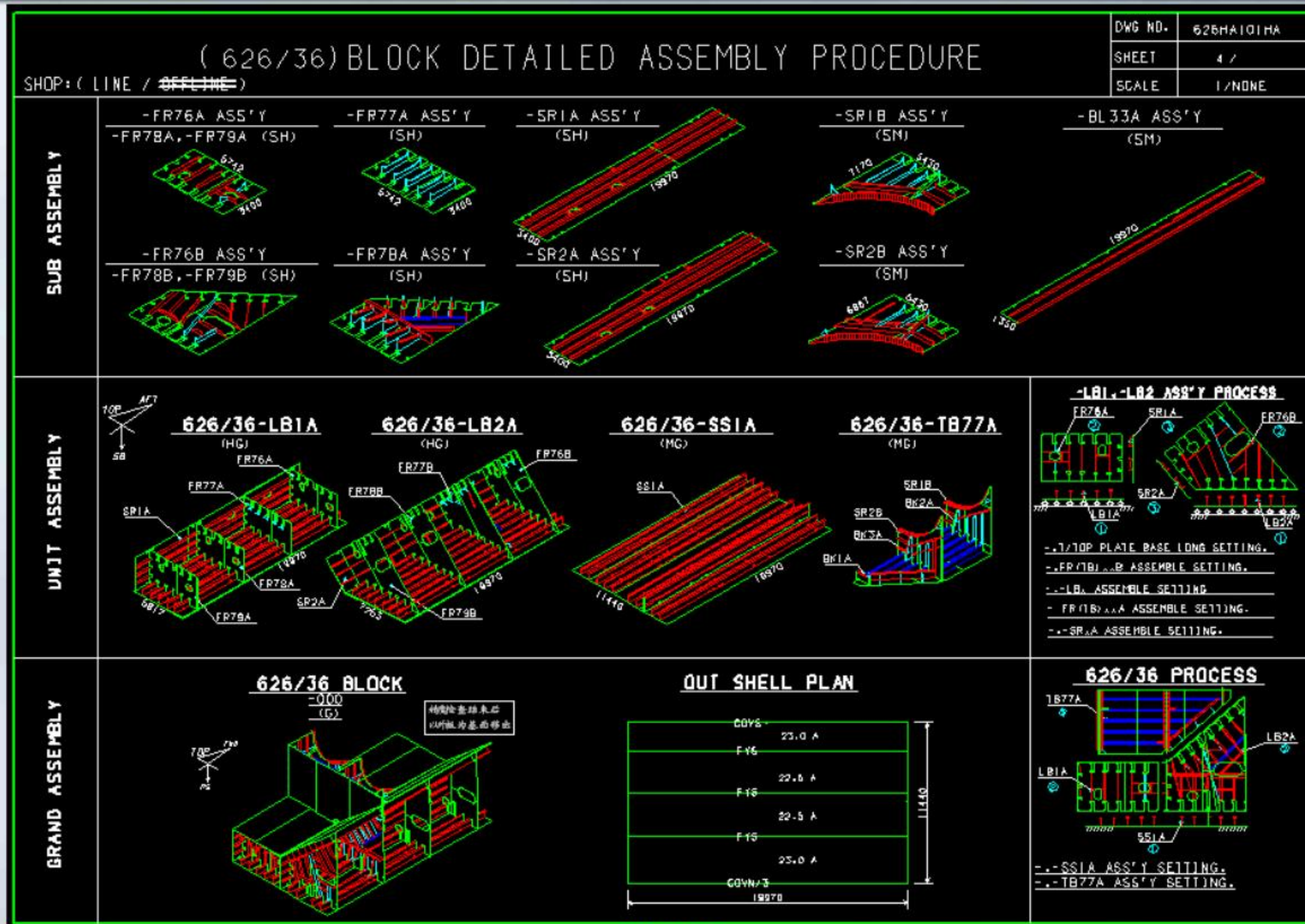
如何实现零件编码和其他功能？

构建装配模型

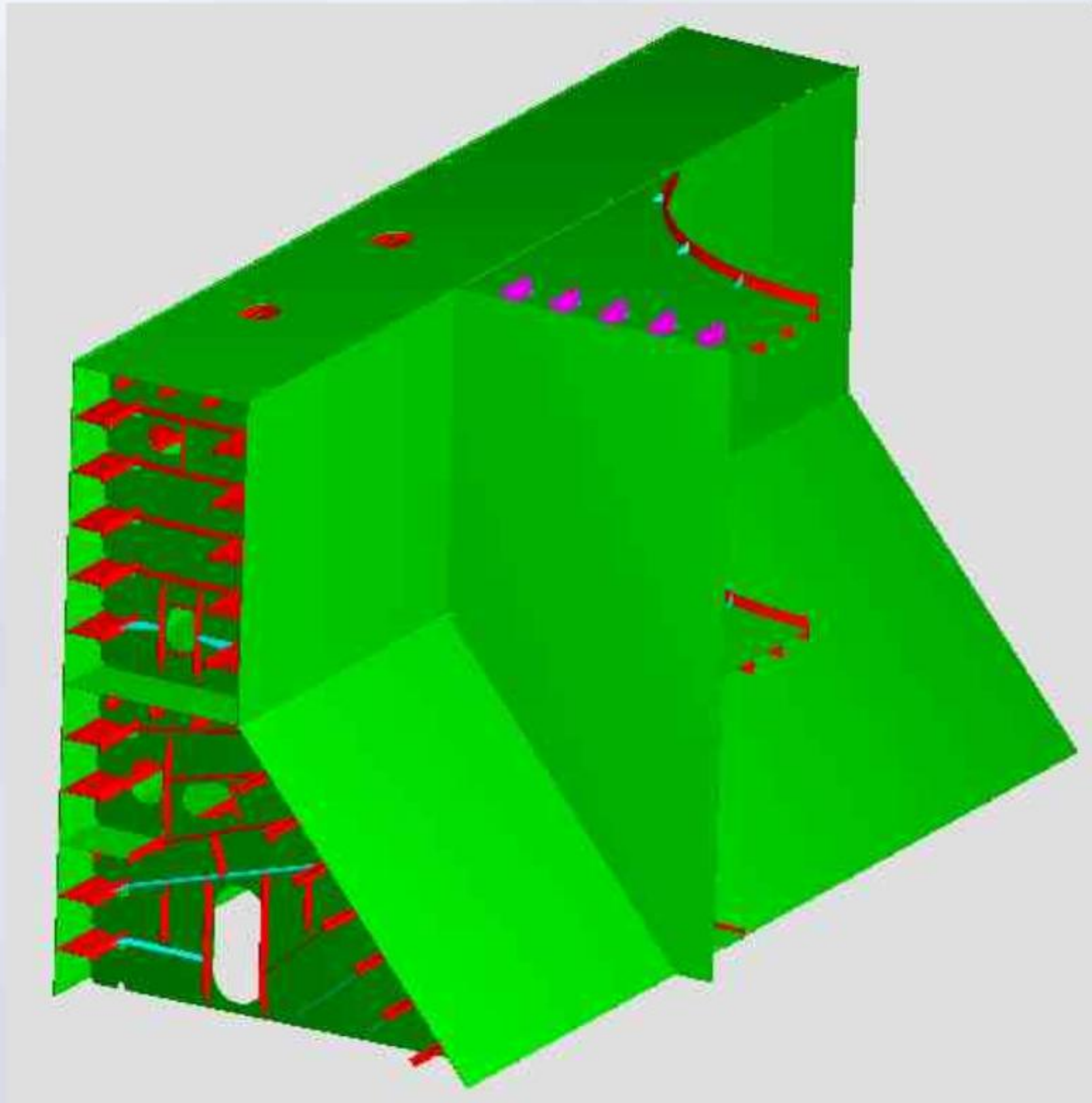
准备条件

- DAP图具备
- 分段模型
- 分段装配图（OPTION项）

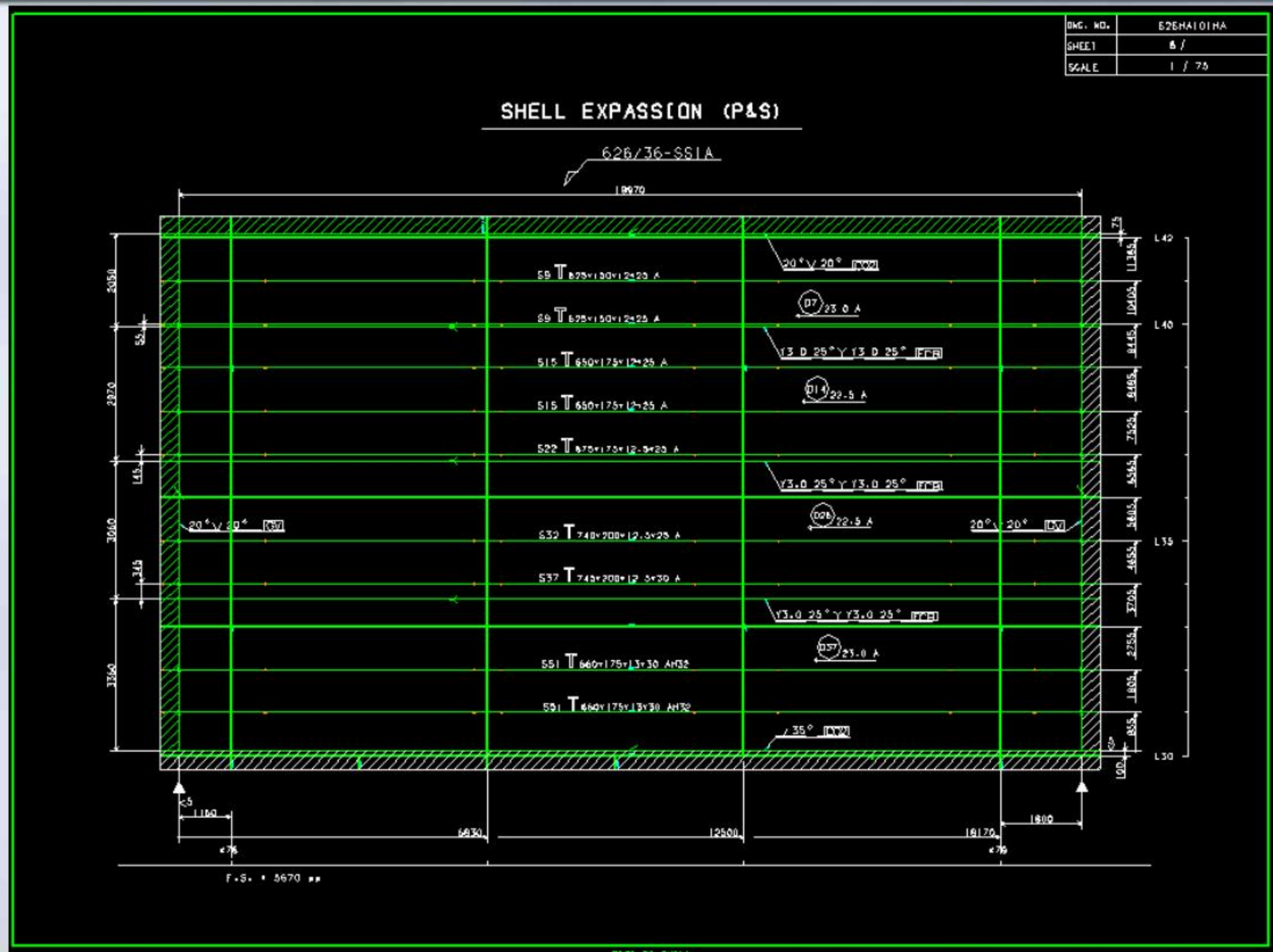
DAP示例



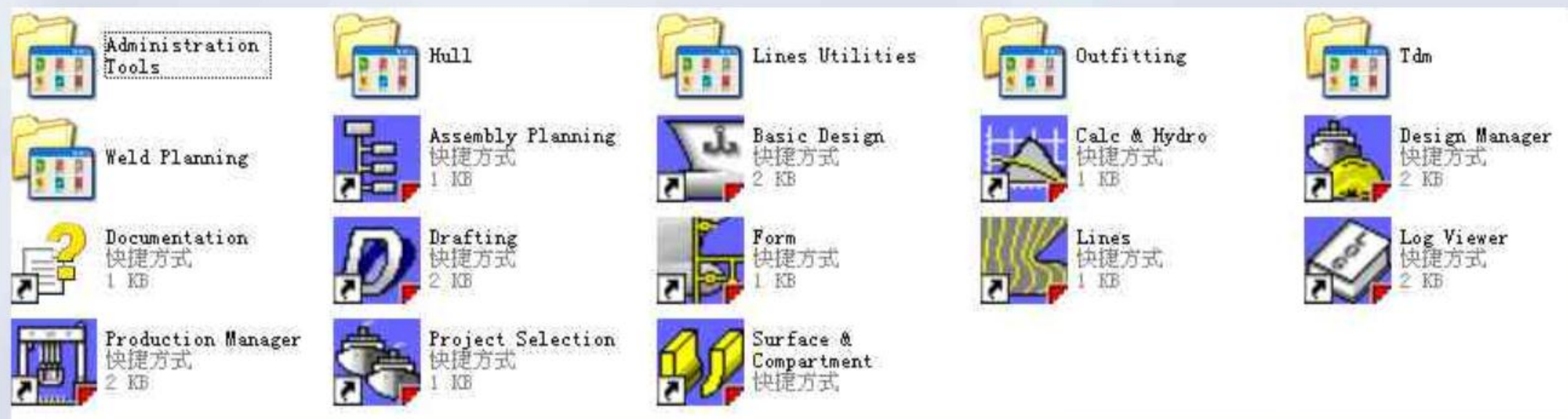
分段模型示例



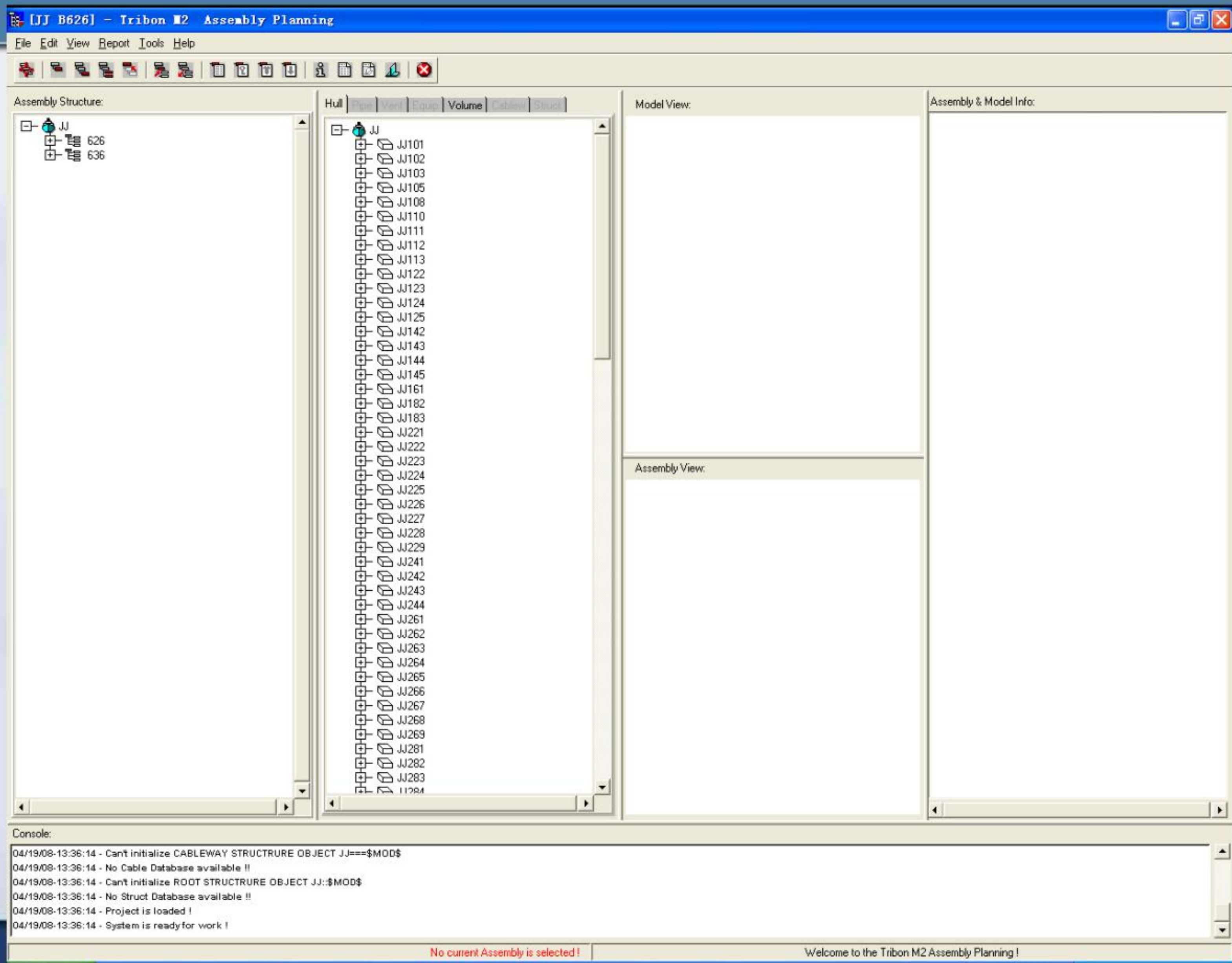
分段装配图示例



开始



程序界面



构建装配模型的主要步骤

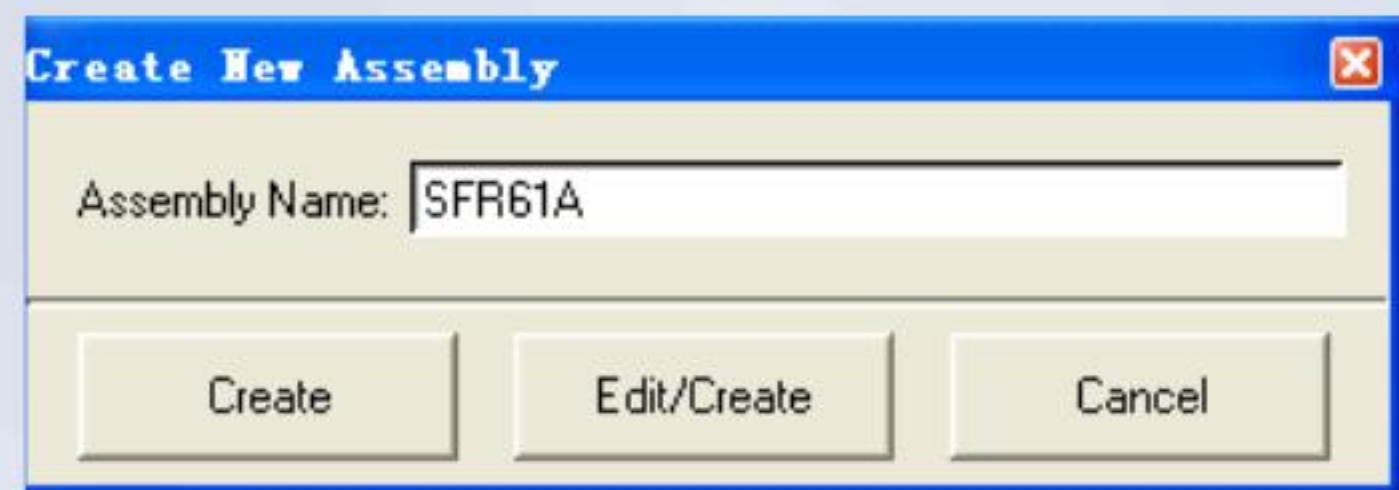
1. 建立各级子装配
2. 零件归属到各子装配
3. 后续的各种修改

常用菜单介绍

Assembly Info	
Create Child Assembly	
Delete Child Assemblies	
<hr/>	
Expand	
Collapse	
Set New Root	
Reset Root	
<hr/>	
View ...	▶
Calculation ...	▶
Reports ...	▶

Assembly Info	
Create Child Assembly	
Edit Assembly Attributes	
Delete Assembly	
Delete Child Assemblies	
<hr/>	
Collect/Decollect Parts	
Key-In Parts	
Key-In Components	
<hr/>	
Expand	
Collapse	
Set New Root	
Reset Root	
<hr/>	
View ...	▶
Calculation ...	▶
Reports ...	▶

创建子装配



零件归属（搜集）

Assembly Structure:

- JJ
 - 626
 - G000
 - G001
 - G002
 - 636
 - G001
 - G002

Hull | Pipe | Vent | Equip | Volume | Cablew | Struct

Model View:

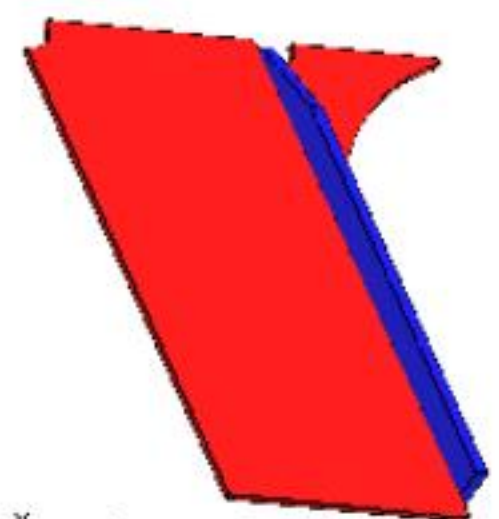
74 Tribon AP: Parts of Assembly -626-G000

Part Name	Part Type	Pos No
626-BK1A-1	plate	47
626-BK1A/F1	flange	63
626-BK1A/1	bracket	27

Update Select All Unselect All Decollect Undo Reset Cancel

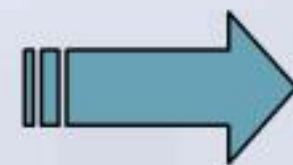
- 626-LB1 (S)
- 626-LB2
- 626-LB2 (S)
- 626-SS1A
- 626-SS1A (S)
- 626-STR1A
- 626-STR1A (S)
- 626-STR1B
- 626-STR1B (S)
- 626-STR2A
- 626-STR2A (S)
- 626-STR2B
- 626-STR2B (S)
- 626-TB77A
- 626-TB77A (S)

626-TB77A (S)



装配属性编辑

Assembly Info
Create Child Assembly
Edit Assembly Attributes
Delete Assembly
Delete Child Assemblies
Rename Assembly
Copy Assembly
Copy Assembly as ...
Move Assembly
Collect/Decollect Parts
Key-In Parts
Key-In Components
Expand
Collapse
Set New Root
Reset Root
View ... ▶
Calculation ... ▶
Reports ... ▶



Tribon AP: Attributes of Assembly -626-G000-SFR16A

Assembly Name	SFR16A
Description	
Building Strategy	
Planning Unit	...
Assembly Type	▼
Working Location	▼
Destination	▼
Design Status	▼
Production Status	▼
Orientation	UpRight ▼
Specific Panel	▼
Level	0 0 ▼
Planned Start Date	01 Jan 2000
Planned End Date	01 Jan 2000
Actual Start Date	01 Jan 2000
Actual End Date	01 Jan 2000
Estimated Weight	0
Estimated COG	X 0 Y 0 Z 0

Update Undo Reset Cancel

操作演示:

