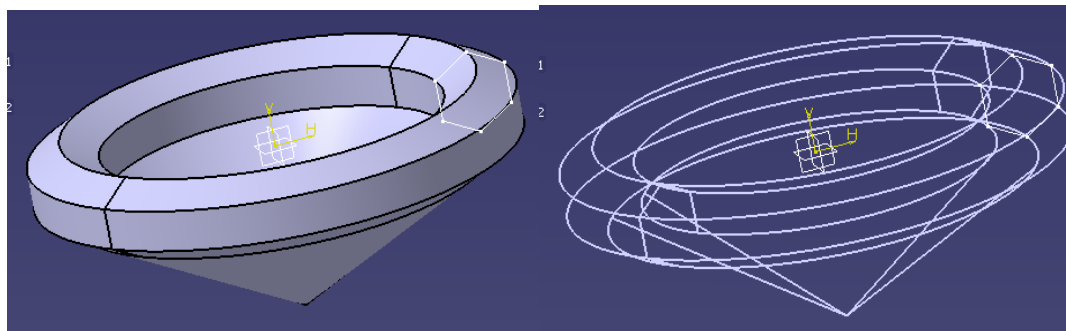
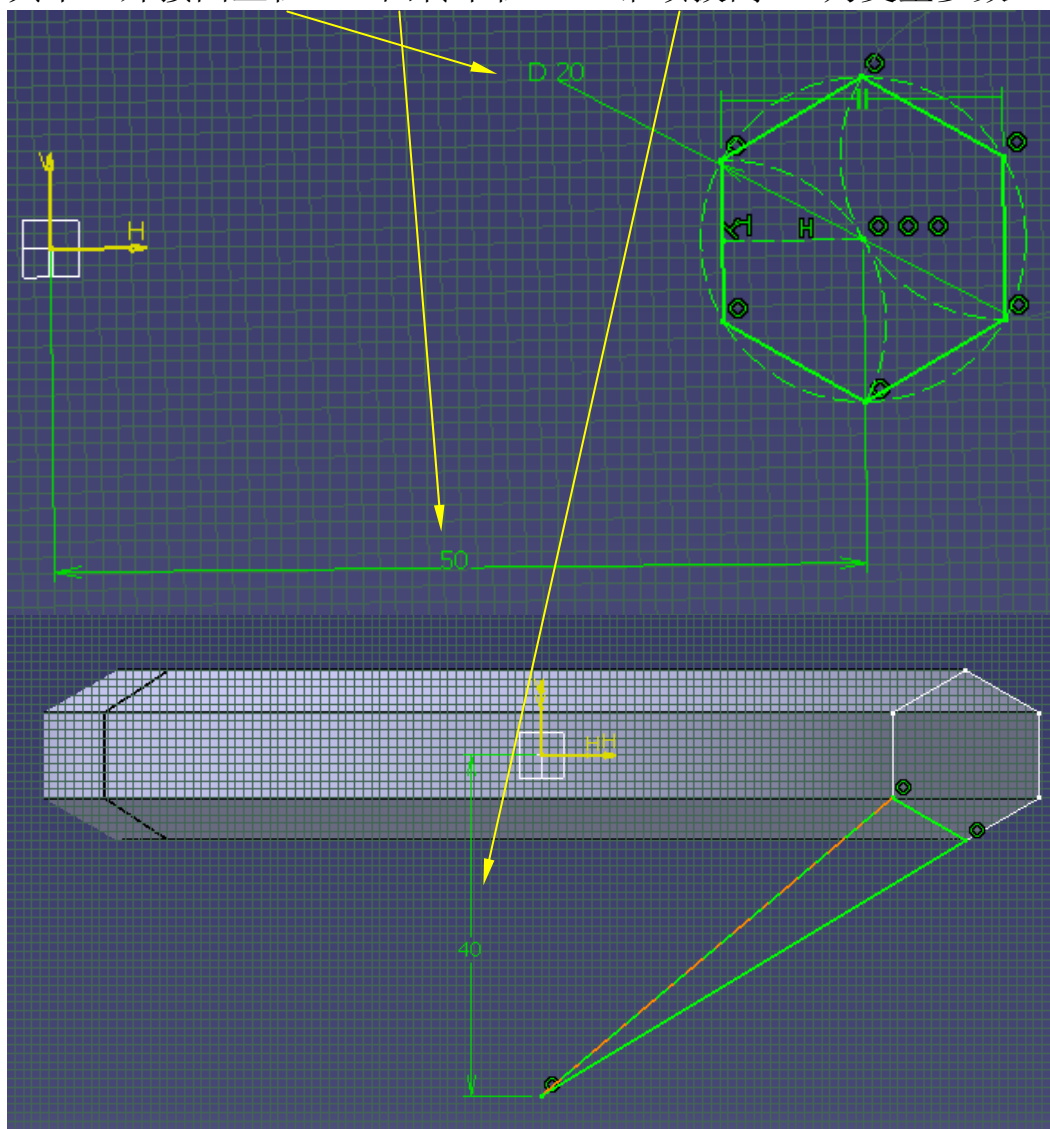


DIAMOND LIBRARY

一.创建样件

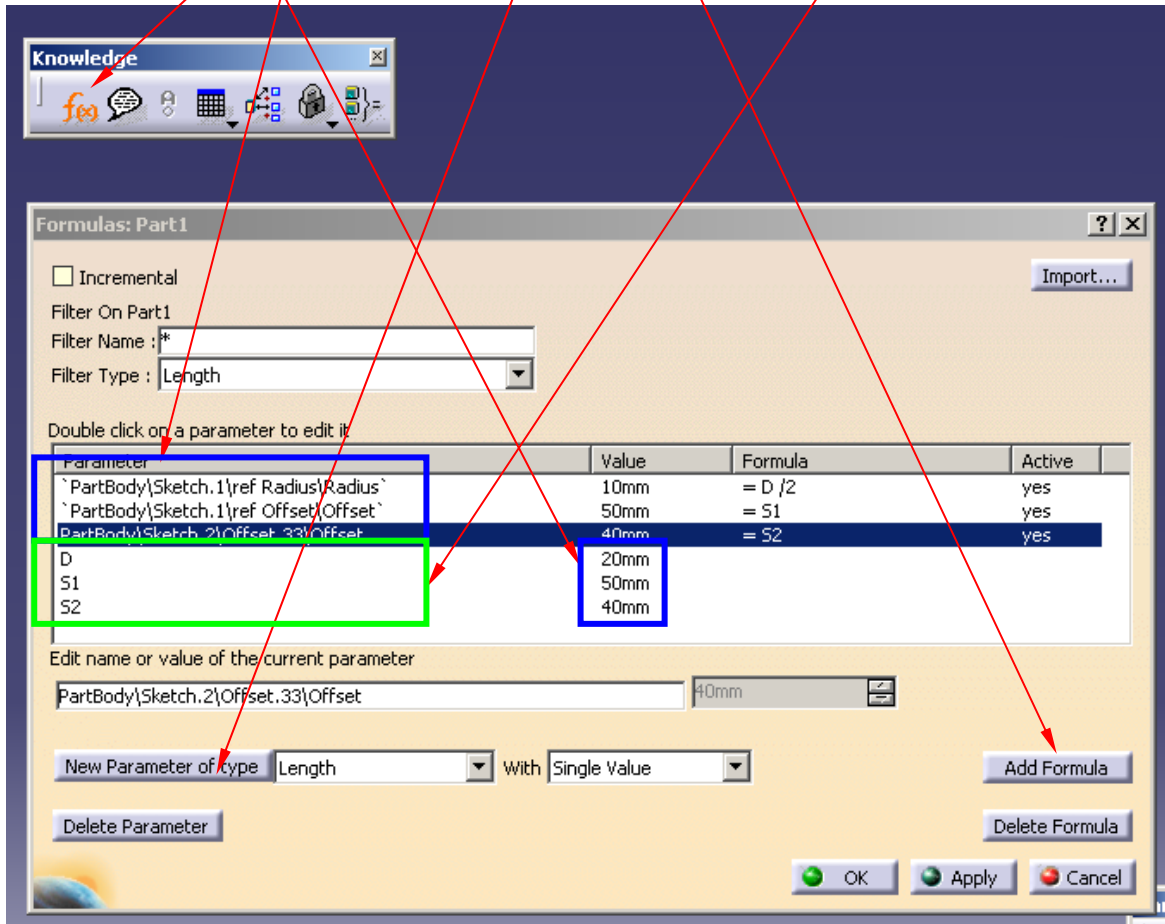


其中：外接圆直径 D 、回转半径 $S1$ 、锥顶拔高 $S2$ 为变量参数




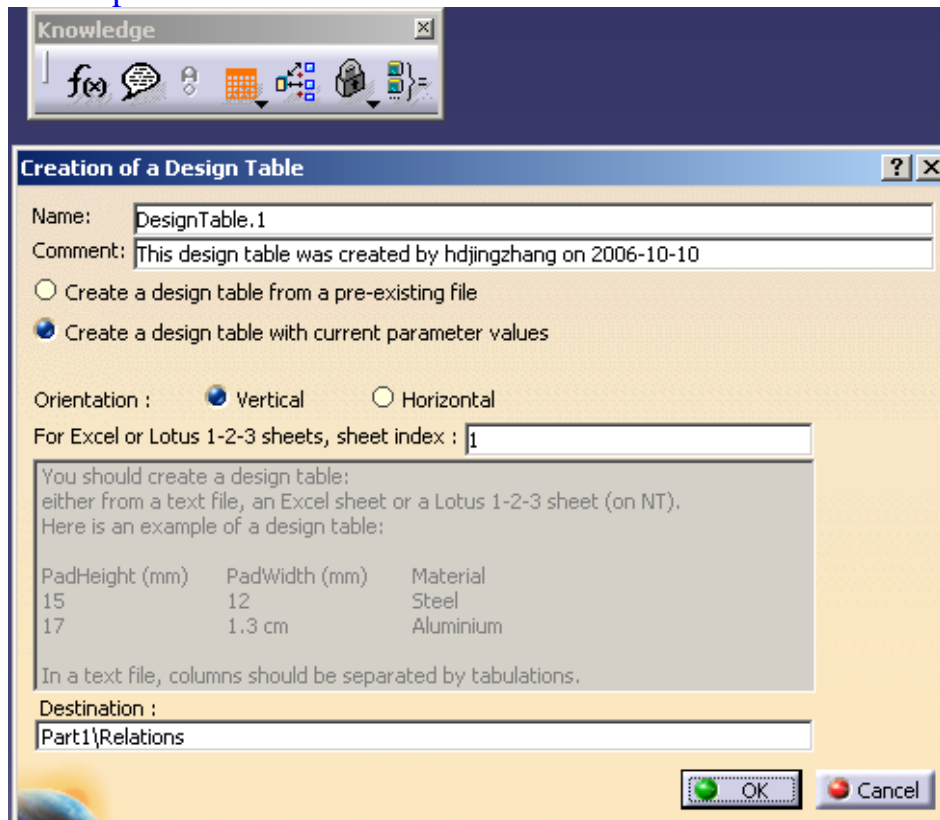
二.添加并设置参数

1. select **Knowledge**—>**f (x)**、**"New Parameter of type"** add D、S1、S2 and evaluated equal to part values
2. select parameters in part and Add Formula like follow, and OK

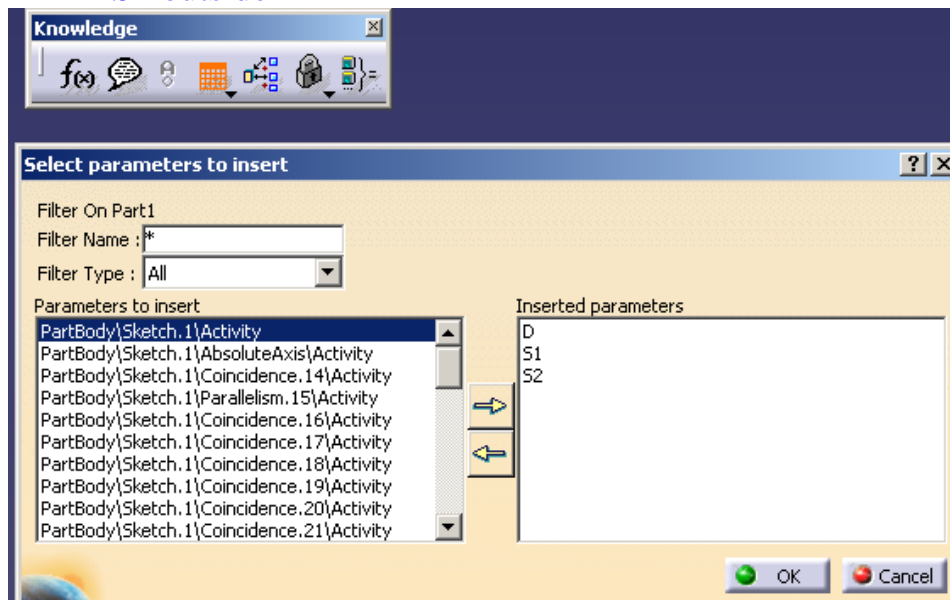


三.添加数据库文件

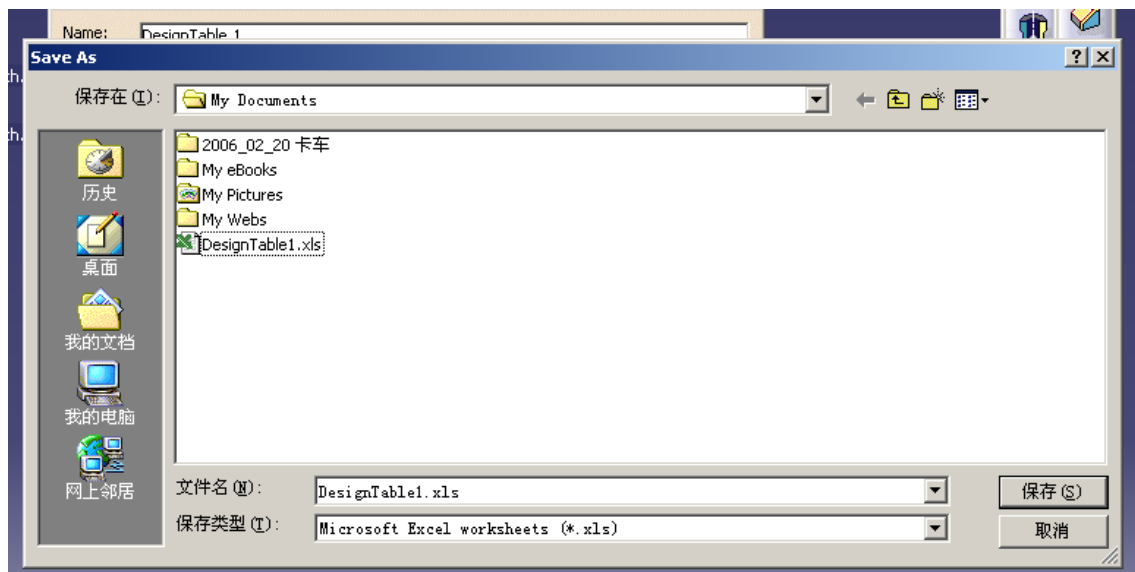
1. **Create a Design Table** : select “Create a design table with current para value”



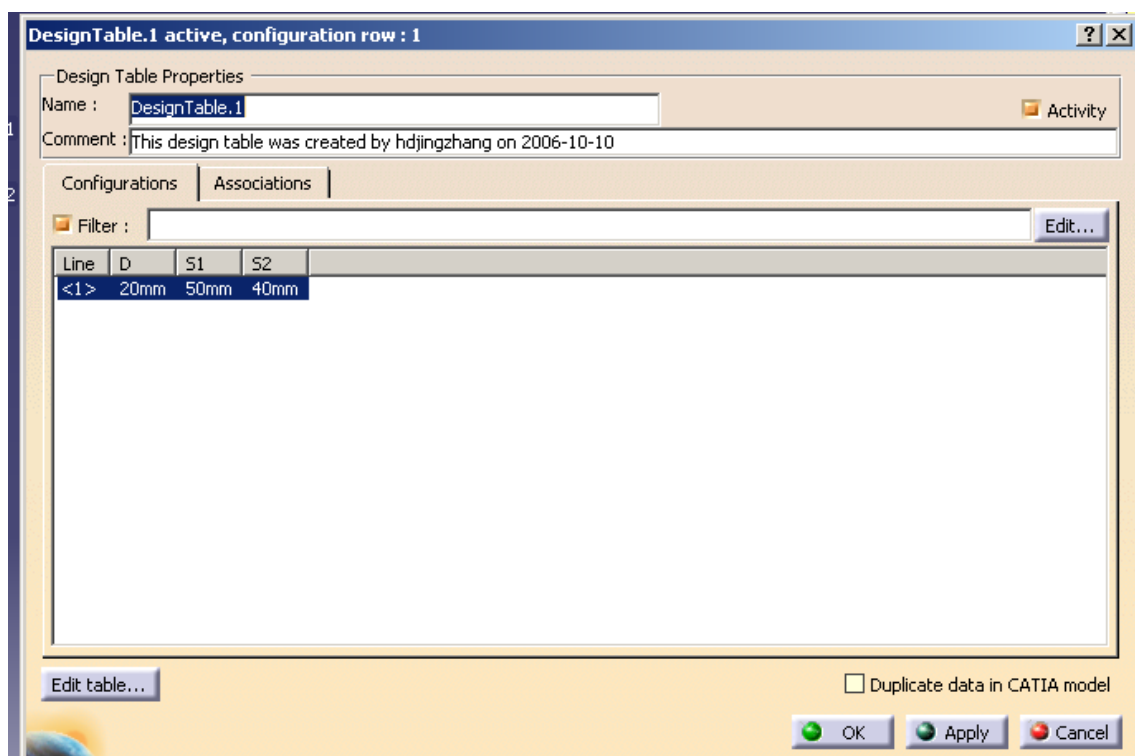
2. **OK** then enter “select Parameters to insert” window, choose D, S1, S2 outside

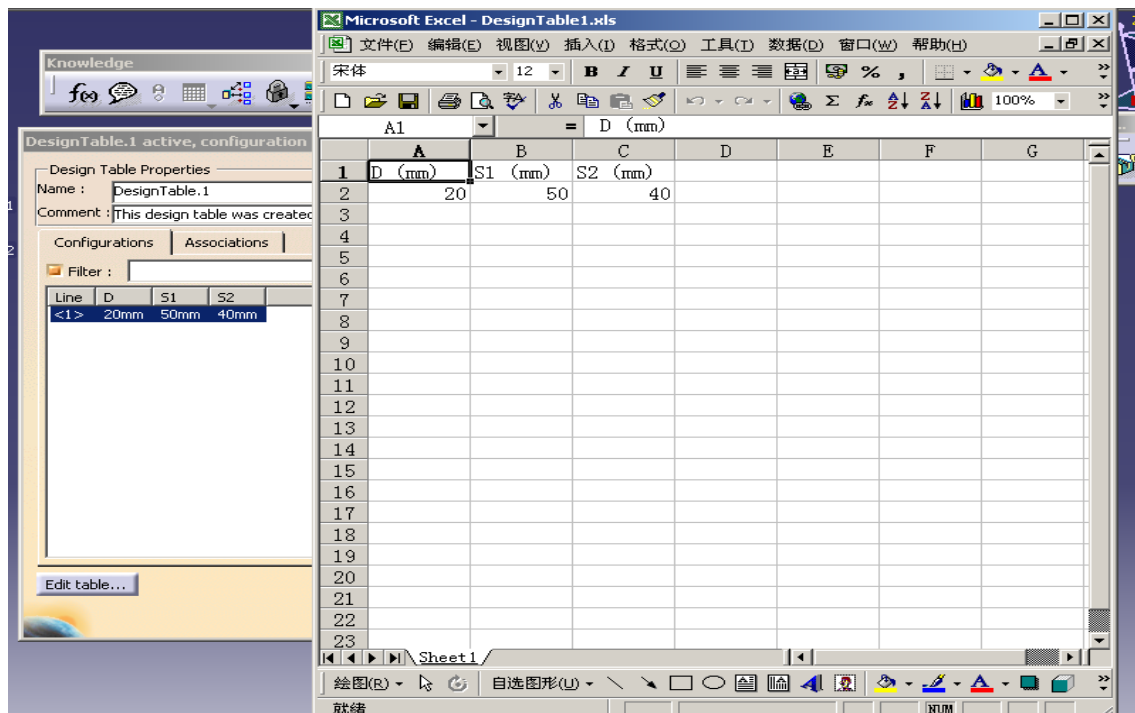


3. OK then save save as a designtable excel file

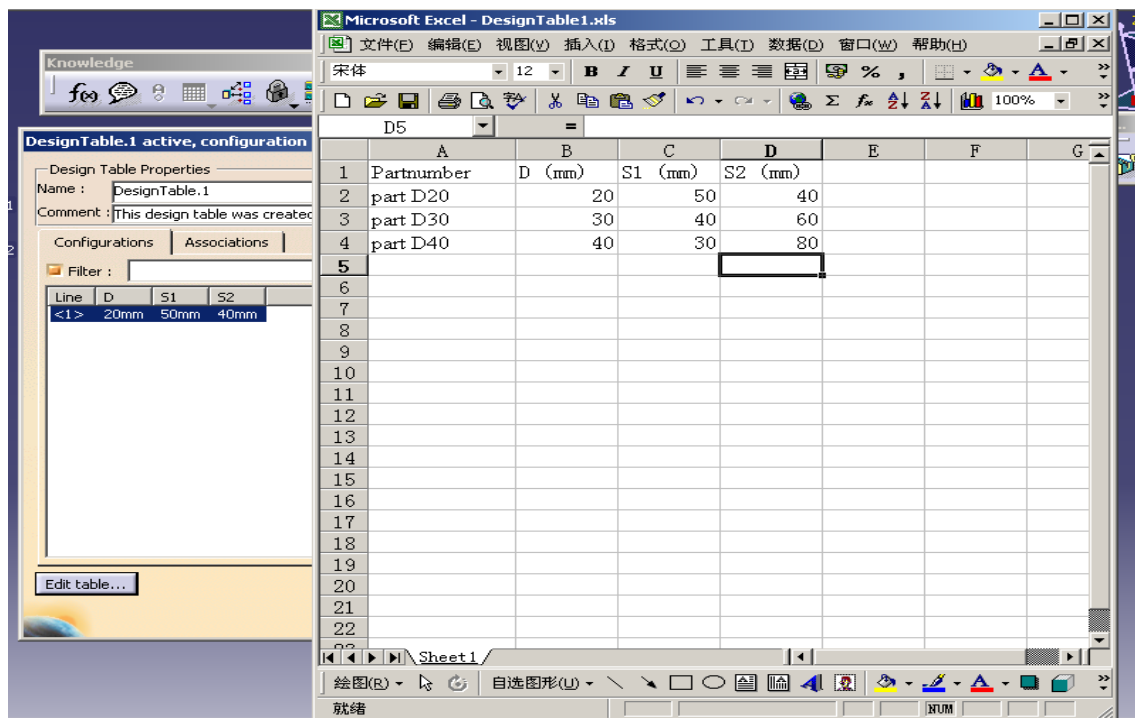


4. OK then select Edit table...into Designtable editor

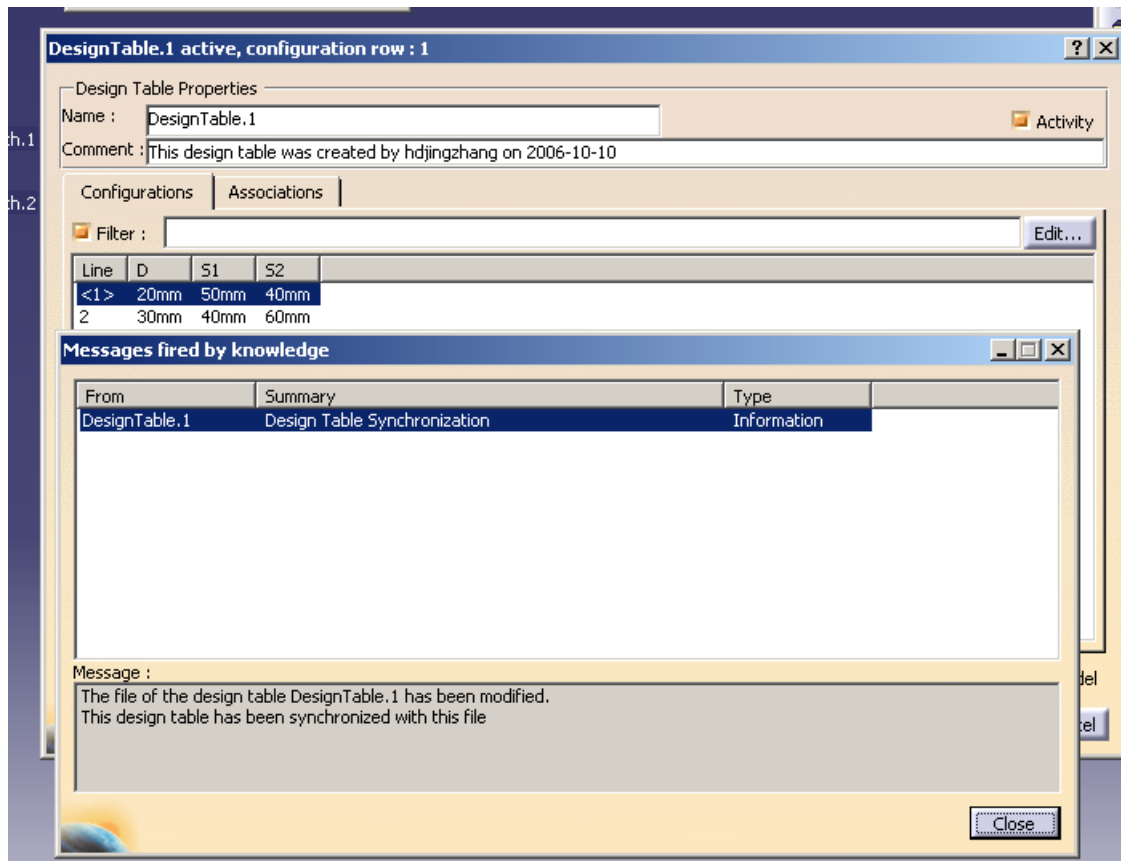




- insert head Column and must named PartNumber then fill the table with values

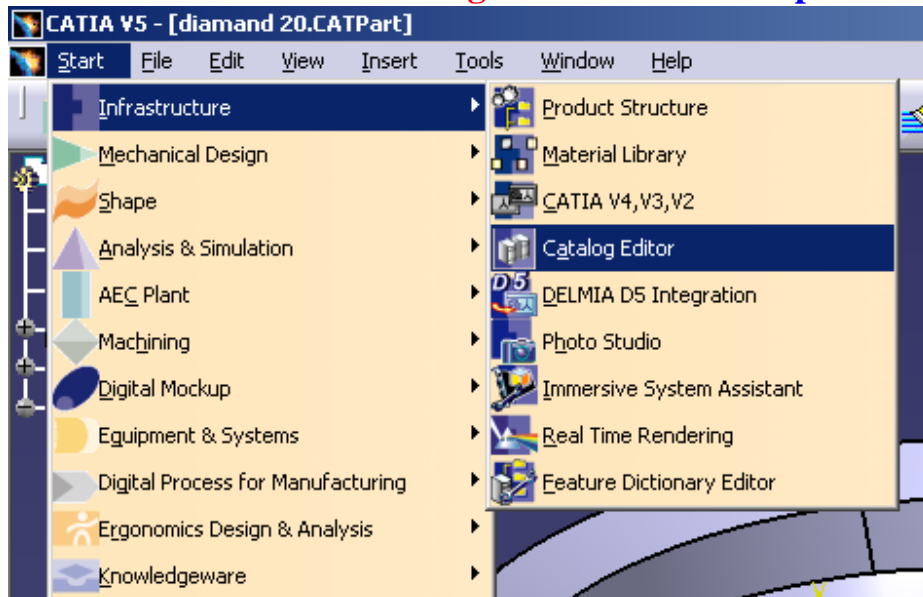


6. then it will show the dialog box and select **close**、**OK** to finish the course

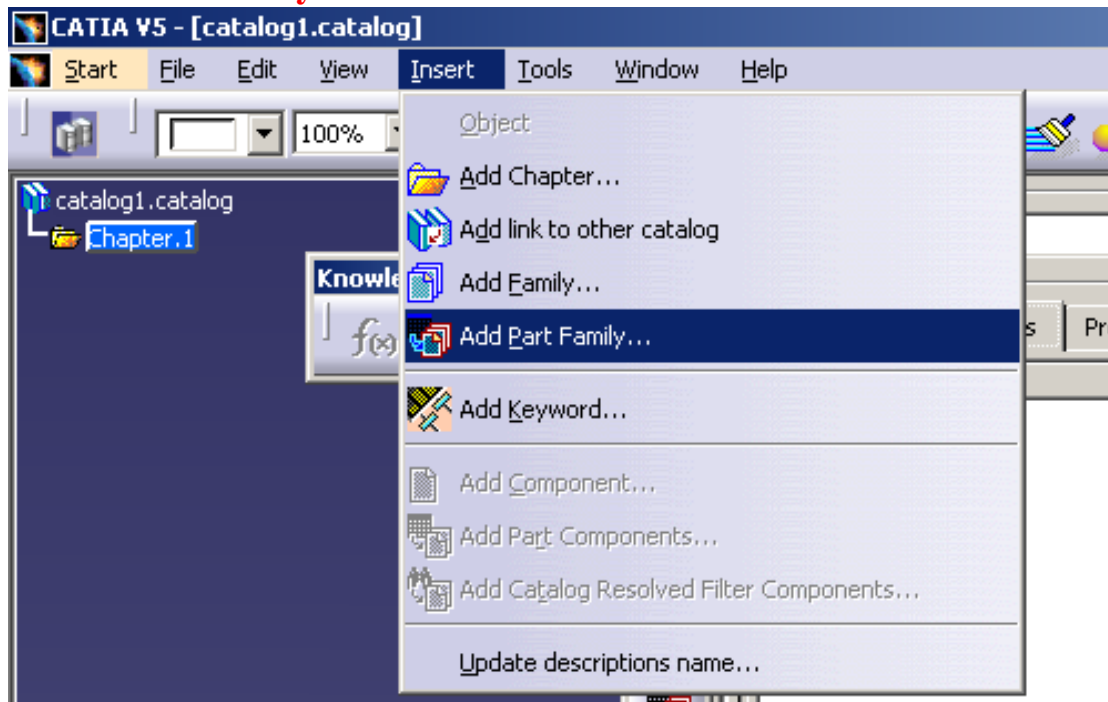


Don't forget **save** the part

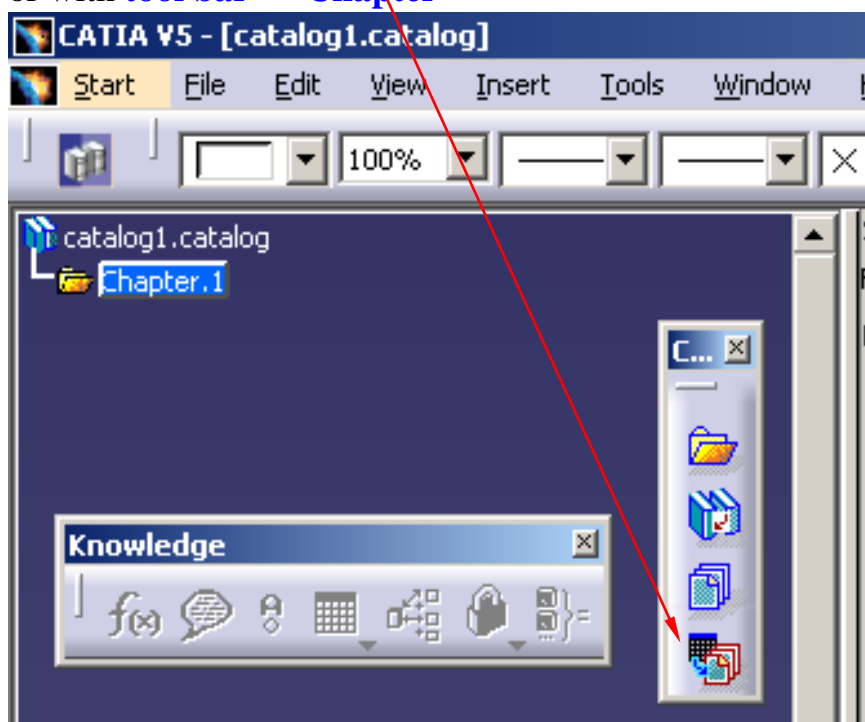
Enter **Infrastructure->Catalog Editor** to **establish part catalog file**



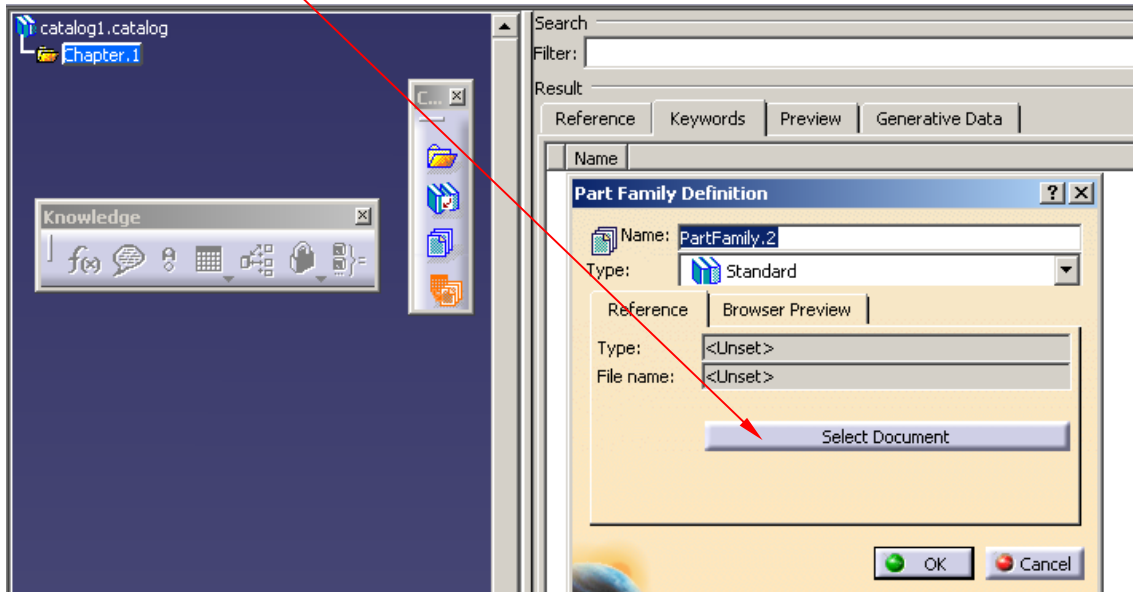
“Add Part Family” with **menu order**



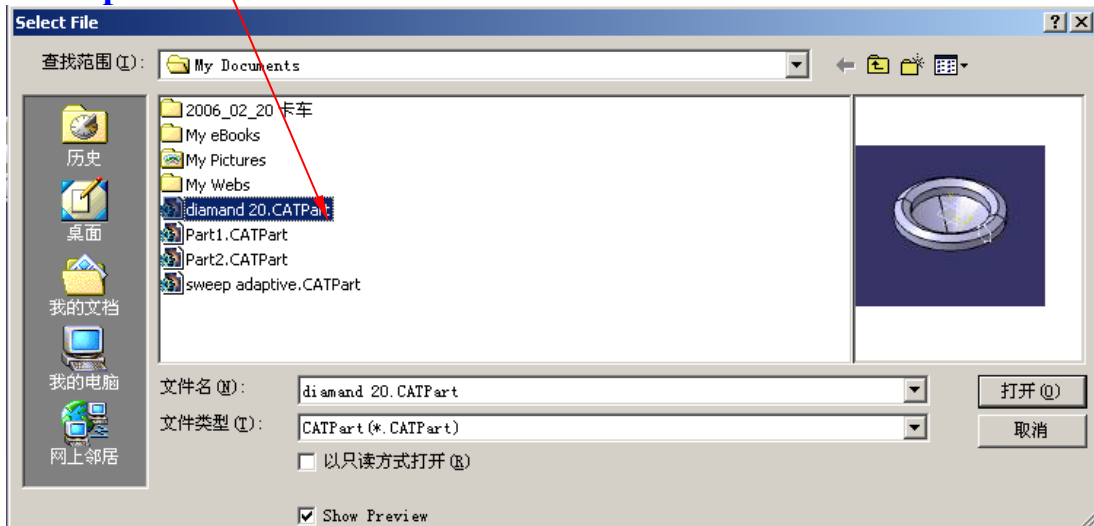
or with **tool bar “Chapter”**



select Document



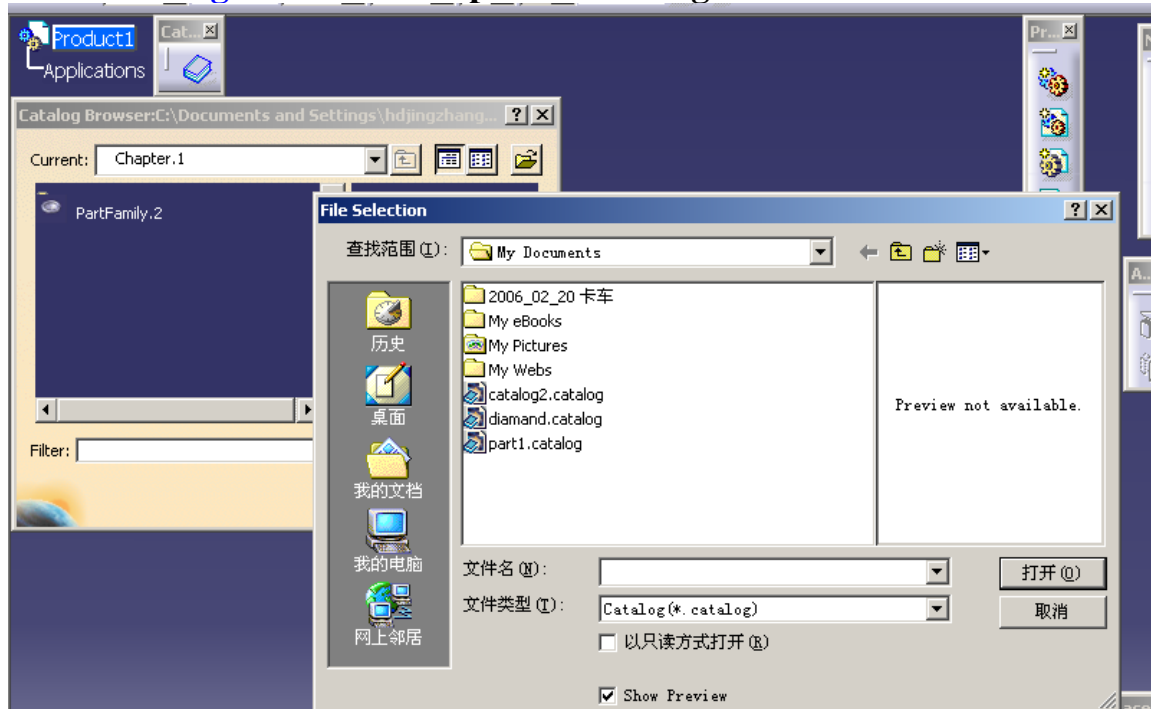
select part file



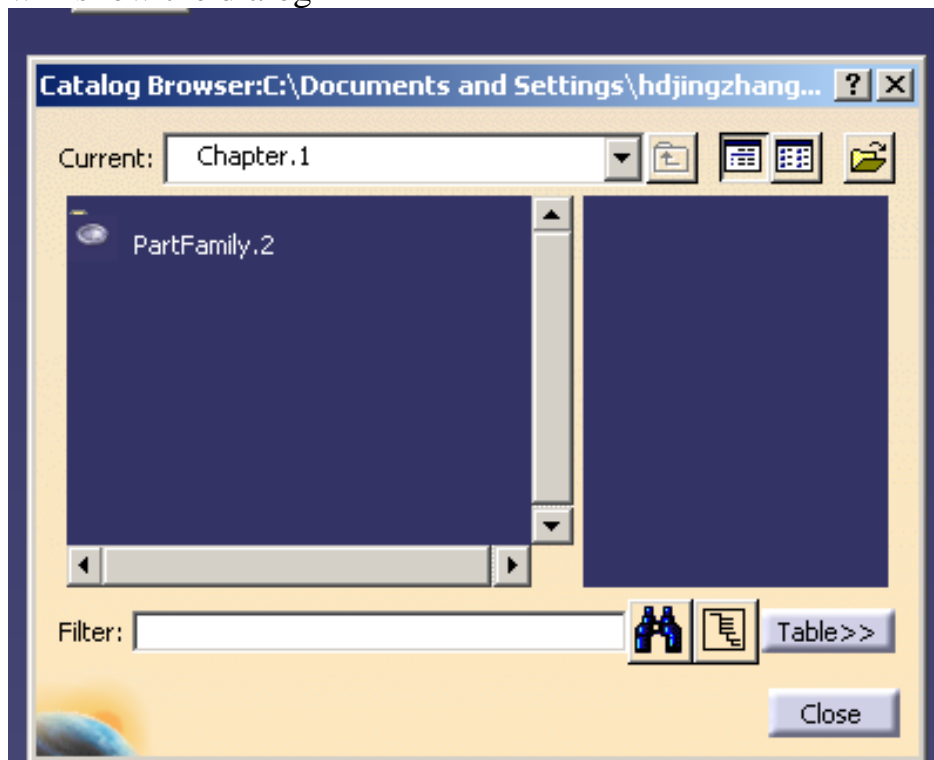
save as catalog file

四.如何从标准件库引用零件

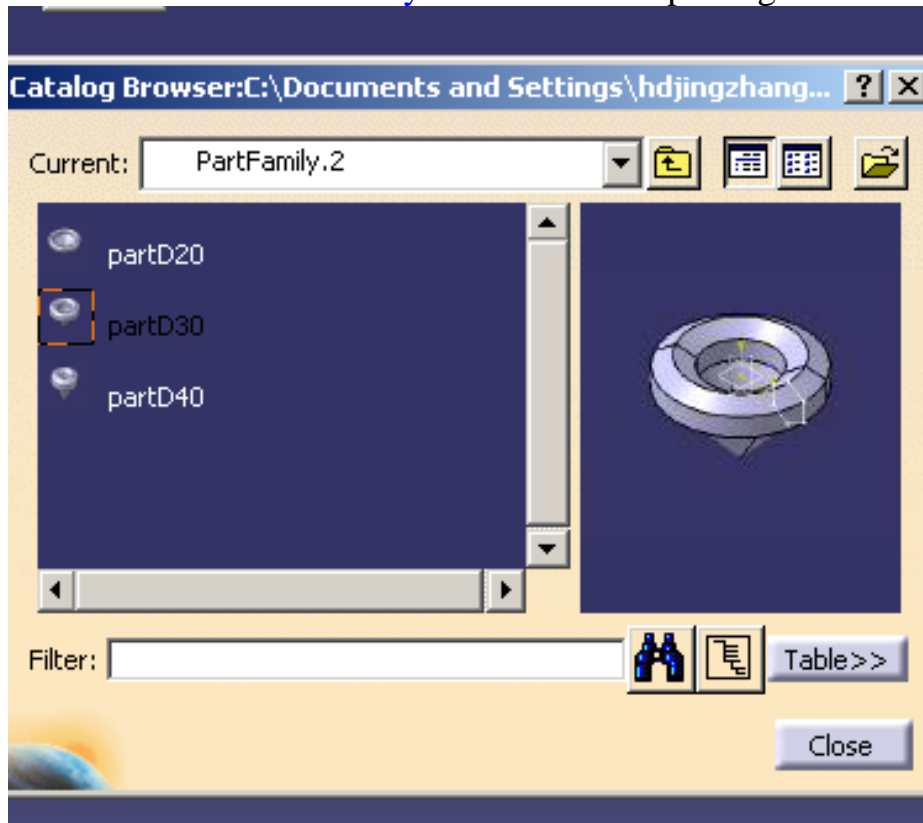
select **Catalog Browser** and open the catalog file saved before



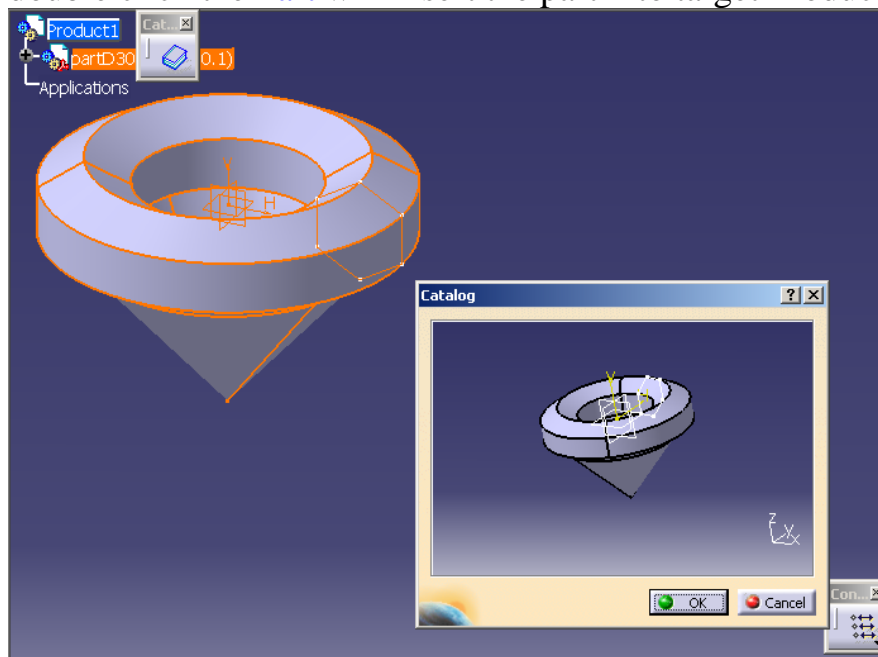
will show the dialog



double click the [PartFamily.2](#) will show the part figure



double click the [Part](#) will insert the part into target Product component tree



*****The End*****