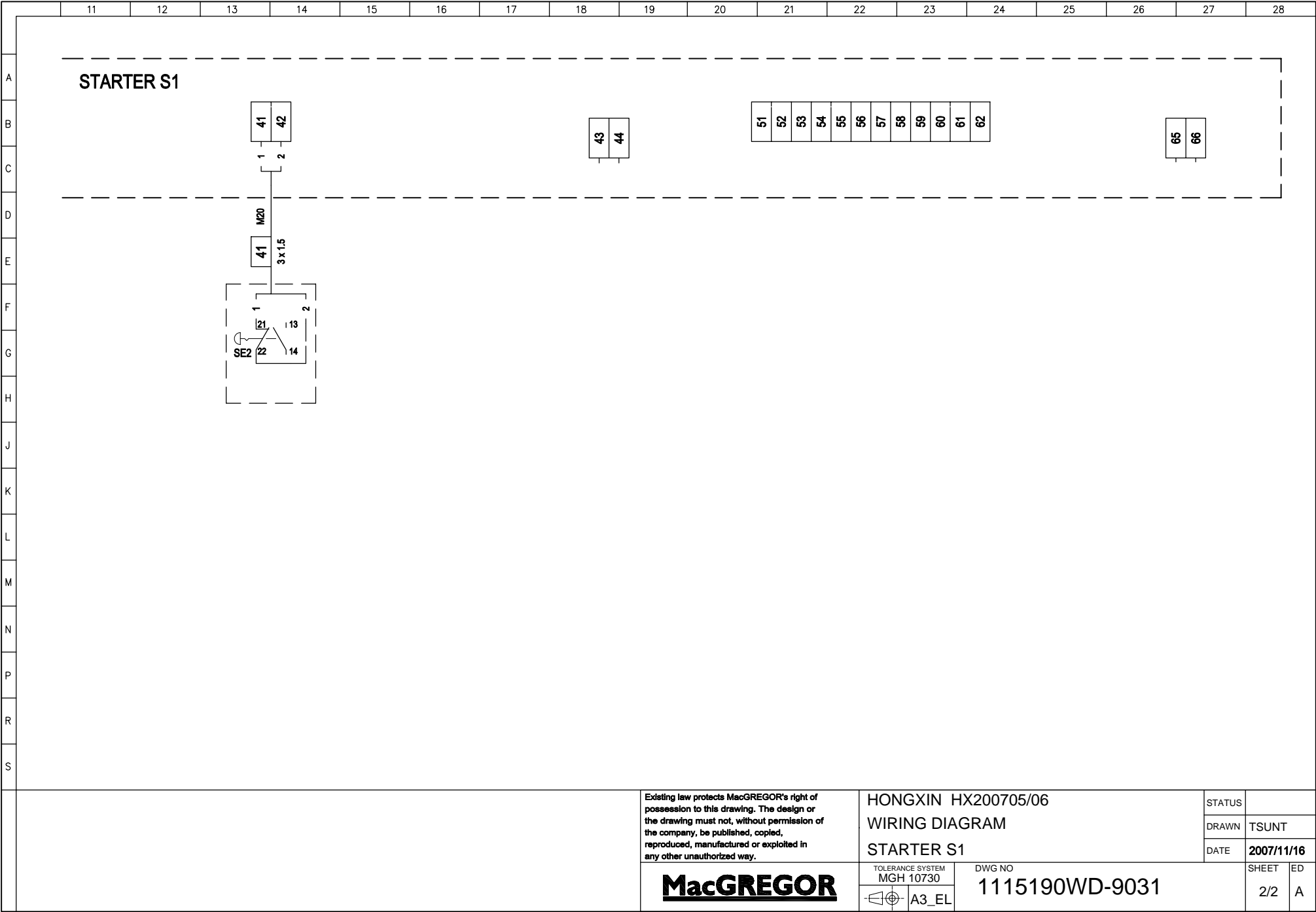


<p>Existing law protects MacGREGOR's right of possession to this drawing. The design or the drawing must not, without permission of the company, be published, copied, reproduced, manufactured or exploited in any other unauthorized way.</p> <p>MacGREGOR</p>		<p>HONGXIN HX200705/06</p> <p>WIRING DIAGRAM</p> <p>STARTER S1</p>		<p>STATUS</p>	
		<p>TOLERANCE SYSTEM MGH 10730</p>		<p>DWG NO</p> <p>1115190WD-9030</p>	<p>DRAWN</p> <p>TSUNIT</p>
		<p>DATE</p> <p>2007/11/16</p>		<p>SHEET</p> <p>1/2</p>	
<p>ED</p> <p>A</p>		<p>Printed:</p>			



LABEL	COMMENTS	TECHNICAL DATA
	(SEE TECH. SPECIFICATION)	

MacGREGOR

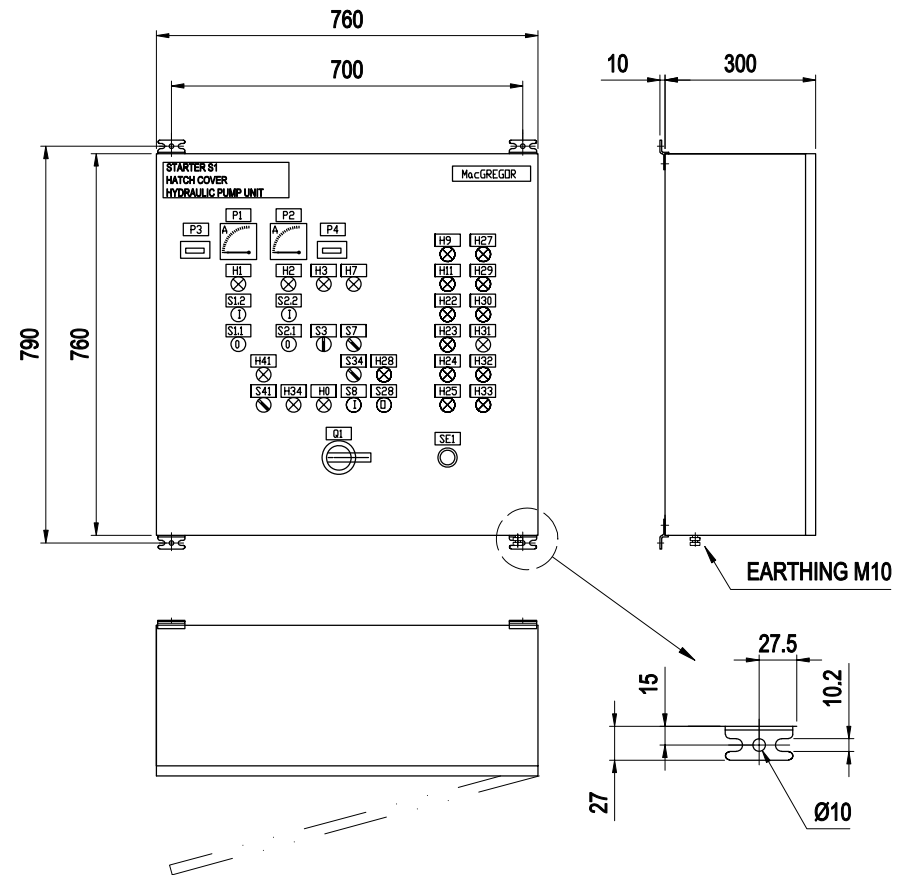
STARTER S1

HATCH COVER

HYDRAULIC PUMP UNIT

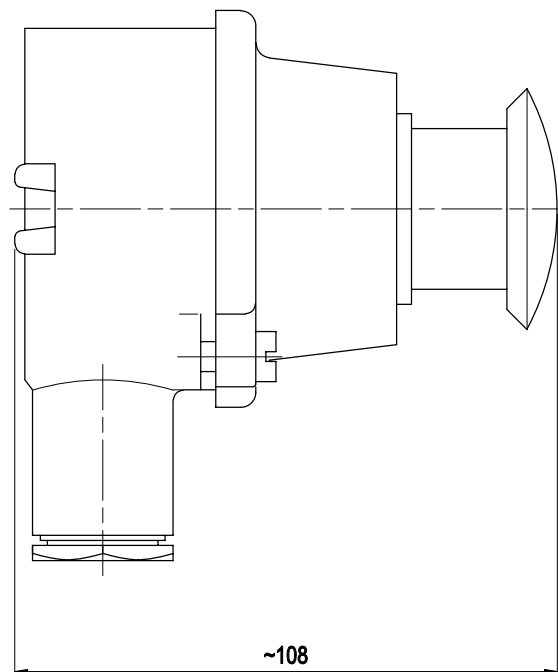
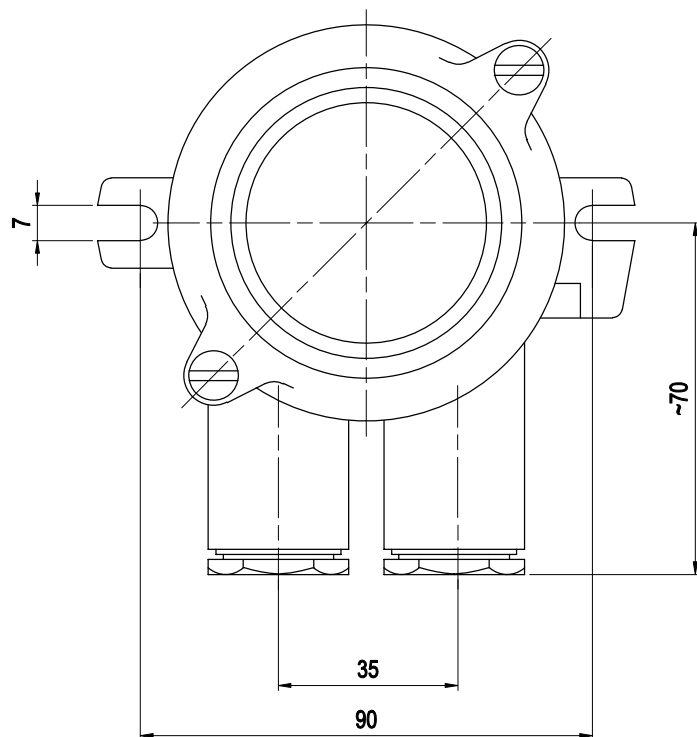
(H0)	SOURCE ON	WHITE	
(H1)	MOTOR M1 RUNNING	GREEN	
(H2)	MOTOR M2 RUNNING	GREEN	
(H3)	MOTOR M3 RUNNING	GREEN	OPTIONAL
(H7)	OIL HEATING ON	GREEN	
(H9)	EMERGENCY STOP	RED	
(H11)	MOTOR OVERLOAD	RED	
(H22)	LOW OIL LEVEL STOP	RED	
(H23)	LOW OIL LEVEL ALARM	RED	
(H24)	HIGH OIL LEVEL ALARM	RED	
(H25)	HIGH OIL TEMPERATURE STOP	RED	
(H27)	LOW OIL TEMPERATURE STOP	RED	OPTIONAL
(H28)	OIL FILTER GLOGGED	RED	
(H29)	LOW PRESSURE ALARM	RED	OPTIONAL
(H30)	HIGH PRESSURE ALARM	RED	OPTIONAL
(H31)	LOW PRESSURE ALARM	RED	OPTIONAL
(H32)	HIGH PRESSURE ALARM	RED	OPTIONAL
(H33)	PRESSURE FILTER GLOGGED	RED	OPTIONAL
(H34)	CONFIRMATION BUTTON ACTIVE	GREEN	OPTIONAL
(H41)	MOTOR HEATING ON	ORANGE	
(P1)	MOTOR M1		
(P2)	MOTOR M2		
(P3)	HOUR COUNTER FOR M1		OPTIONAL
(P4)	HOUR COUNTER FOR M2		OPTIONAL
(Q1)	MAIN SWITCH		
(SE1)	EMERGENCY STOP		
(S1.1)	M1 STOP		
(S1.2)	M1 START		
(S2.1)	M2 STOP		
(S2.2)	M2 START		
(S3)	COOLER MOTOR M3: AUTOM. / OFF / MANUAL		OPTIONAL
(S7)	OIL HEATING: OFF / AUTOM.		
(S8)	LAMP TEST		
(S28)	OIL FILTER: ALARM / RESET		
(S34)	ALARM BELL: OFF / ON		
(S41)	MOTOR HEATING: OFF / AUTOM.		

STARTING METHOD: DIRECT ON LINE
 THERMAL PROTECTION: IN THREE PHASES
 FUSES: AUTOMATIC TYPE
 CABLE GLANDS: BRASS
 PROTECTION CLASS: IP54
 WEIGHT: 60 - 80 kg



Existing law protects MacGREGOR's right of possession to this drawing. The design or the drawing must not, without permission of the company, be published, copied, reproduced, manufactured or exploited in any other unauthorized way.		MASS	
		SCALE 1:10	
		STATUS RELEASED	
		DRAWN TKUJMK	
		DATE 08.12.2004	
<div>MacGREGOR</div> <div> <div>TOLERANCE SYSTEM</div> <div>MGH 10730</div> <div> <div></div> <div>A3</div> </div> </div>		<div>STARTER</div> <div>MGH 12067</div> <div> <div>DWG NO</div> <div>K102071</div> </div>	
		<div>SHEET</div> <div>001</div> <div>ED</div> <div>C</div>	

Printed:



Please, check cable gland size from wiring diagram

DESCRIPTION:

- Emergency switch-off button.
- Brass casing and cover.
- Undertachable cover screws M6.
- Plastic contact interior for 1-pole working current and closed circuit current 380/500 V AC 10A.

- Depressed position blocks contacts, deblocking by strong pulling.
- Nominal cable gland M24.
- PROTECTION CLASS: IP56

Existing law protects MacGREGOR's right of possession to this drawing. The design or the drawing must not, without permission of the company, be published, copied, reproduced, manufactured or exploited in any other unauthorized way.

MacGREGOR

EMERGENCY STOP

EMERGENCY STOP BUTTON

1004256

TOLERANCE SYSTEM
MGH 10730

DWG NO

K102053



A3

MASS	
SCALE	1:1
STATUS	RELEASED
DRAWN	TKUJMK
DATE	20.11.2004
SHEET	1/1
ED	A

Printed: