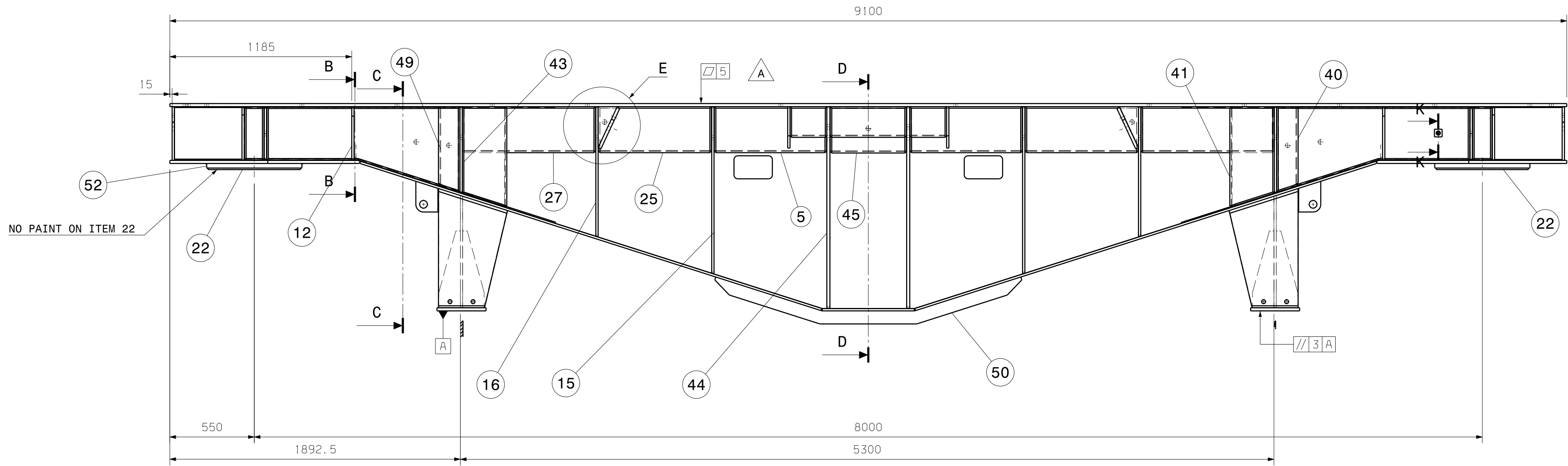
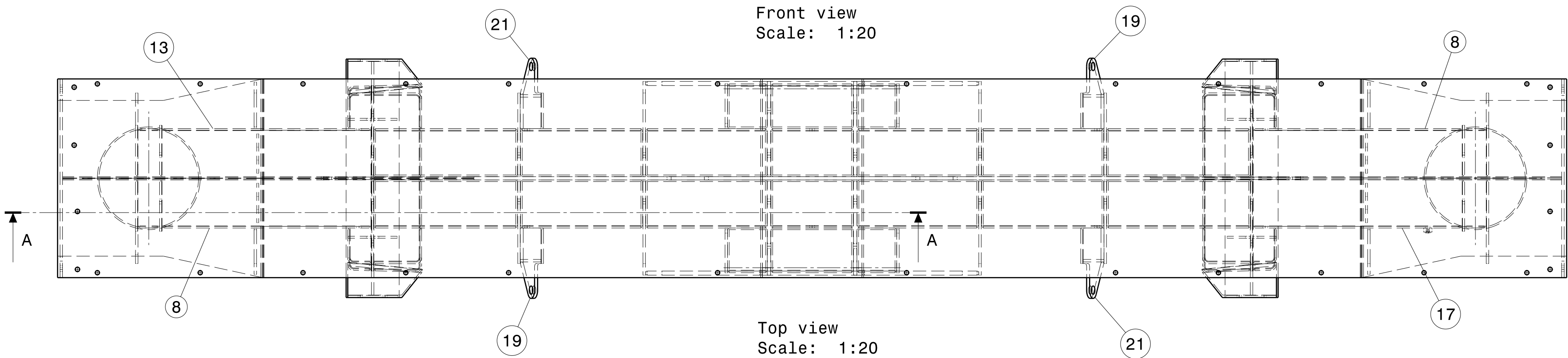


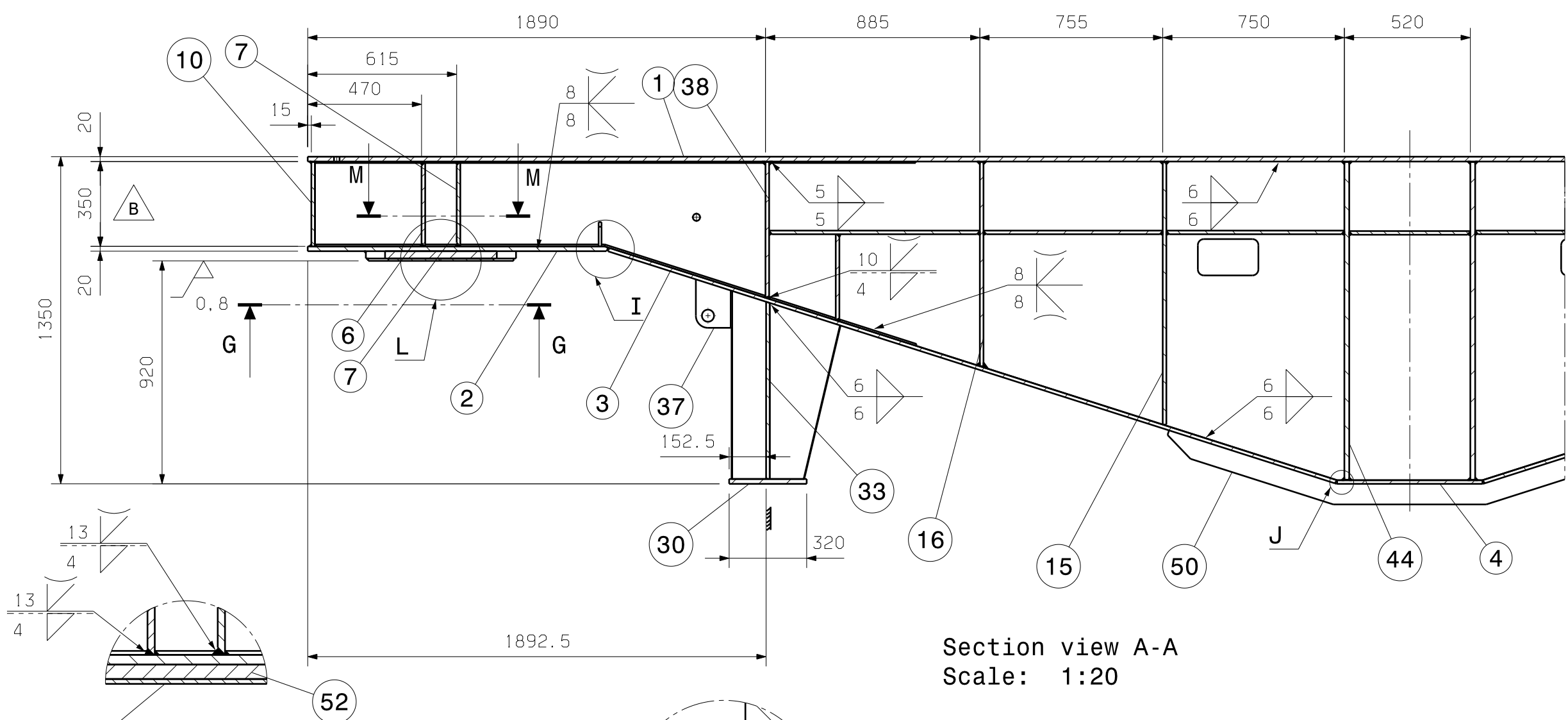
According to international laws this drawing is the property of TTS. The drawing and contents can not be made public, copied or otherwise used, without our written consent.



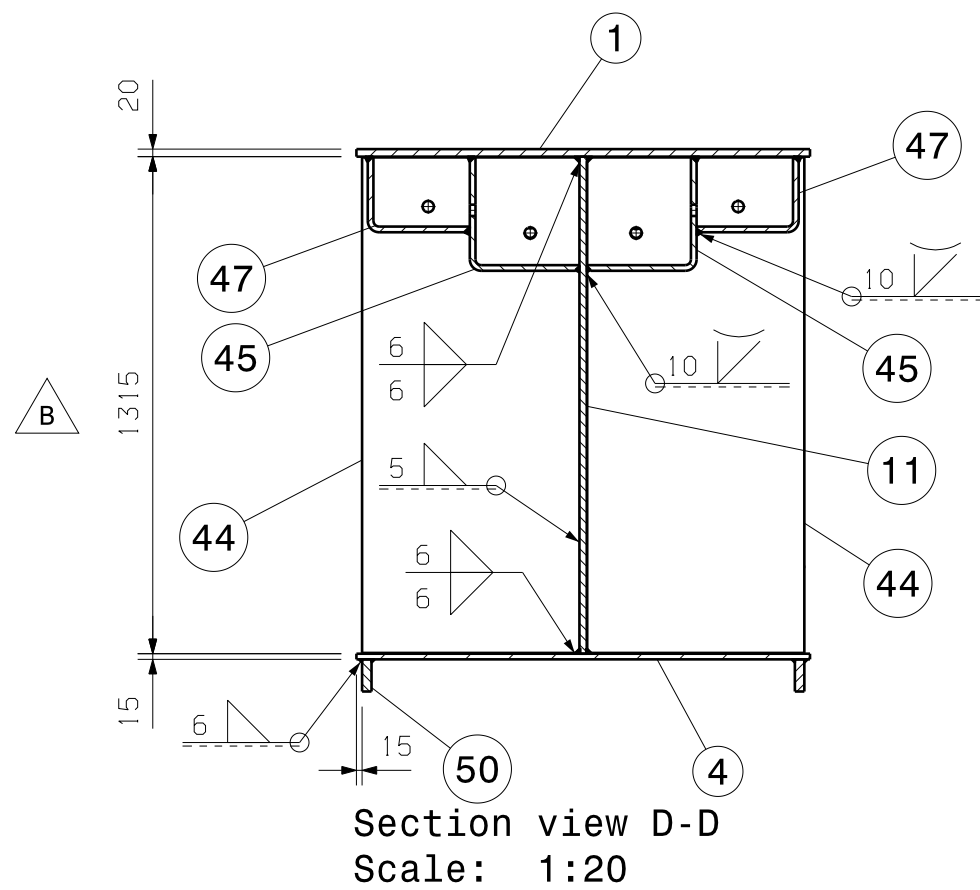
Front view
Scale: 1:20



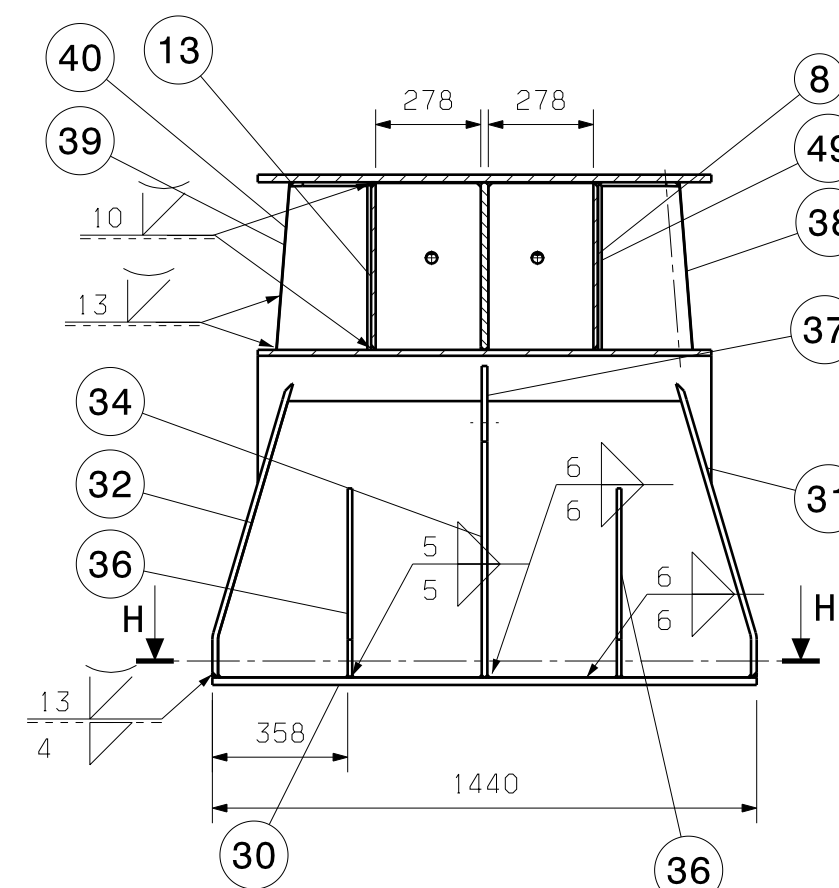
Top view
Scale: 1:20



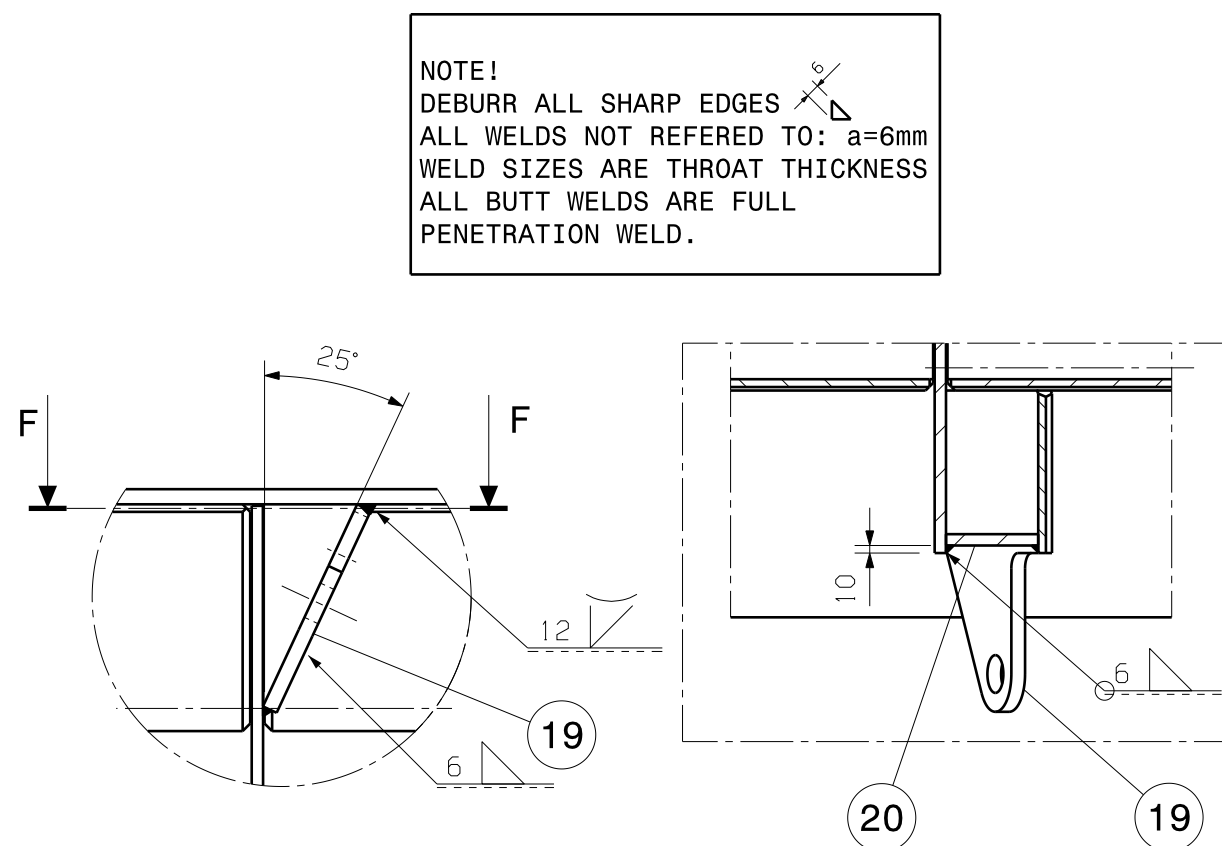
Section view A-A
Scale: 1:20



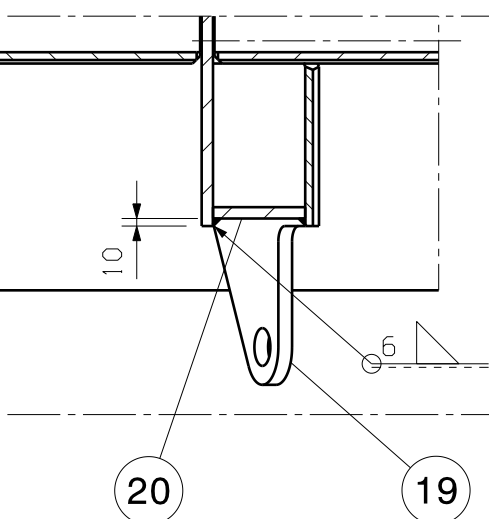
Section view D-D
Scale: 1:20



Section view C-C
Scale: 1:20

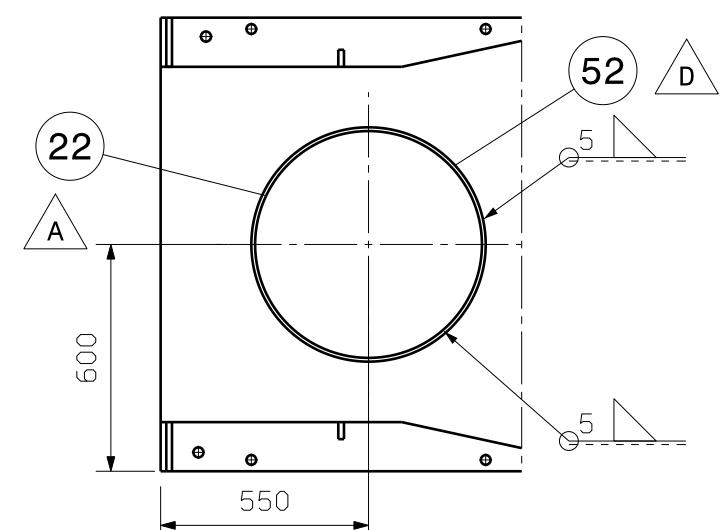


Detail E
Scale: 1:10

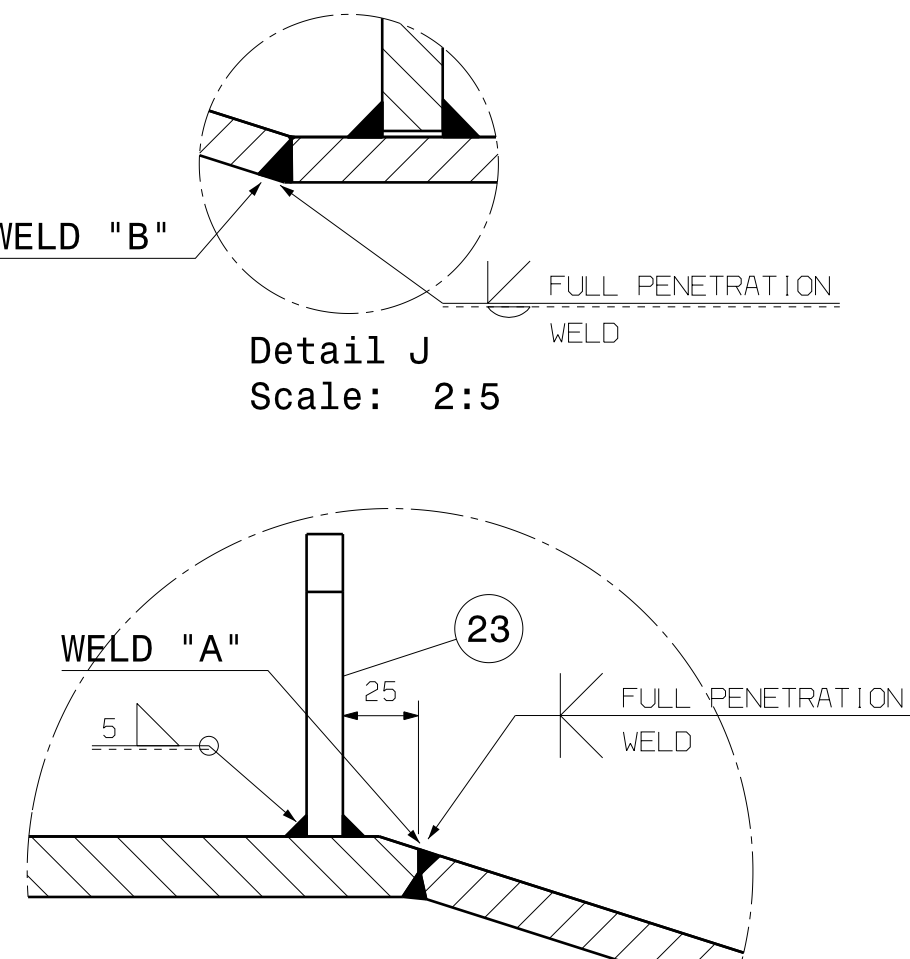


Section view F-F
Scale: 1:10

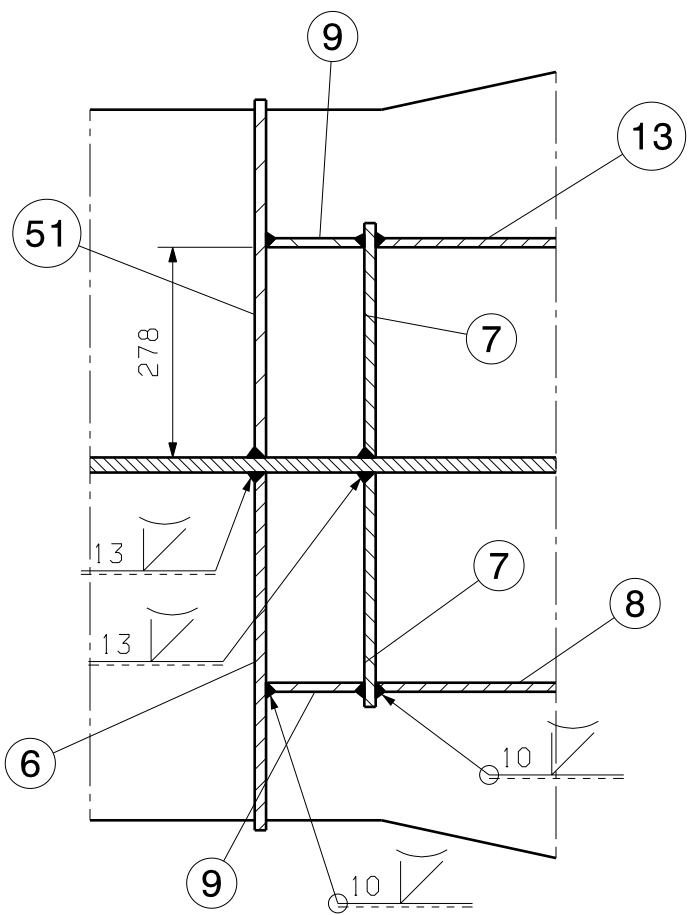
Detail L
Scale: 1:10



Section view G-G
Scale: 1:20

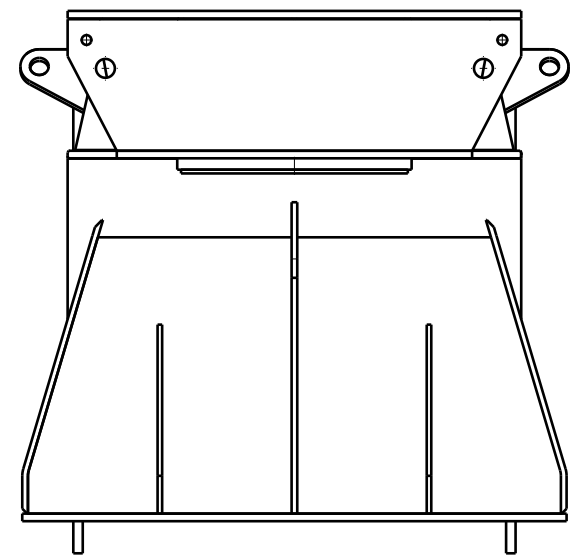


Detail I
Scale: 2:5

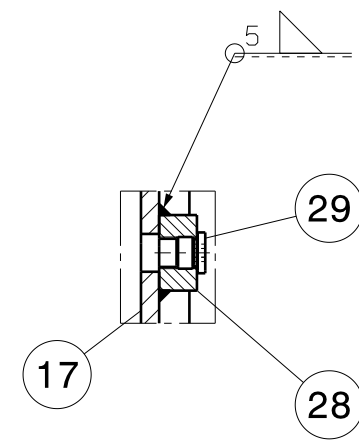


Section view M-M
Scale: 1:10

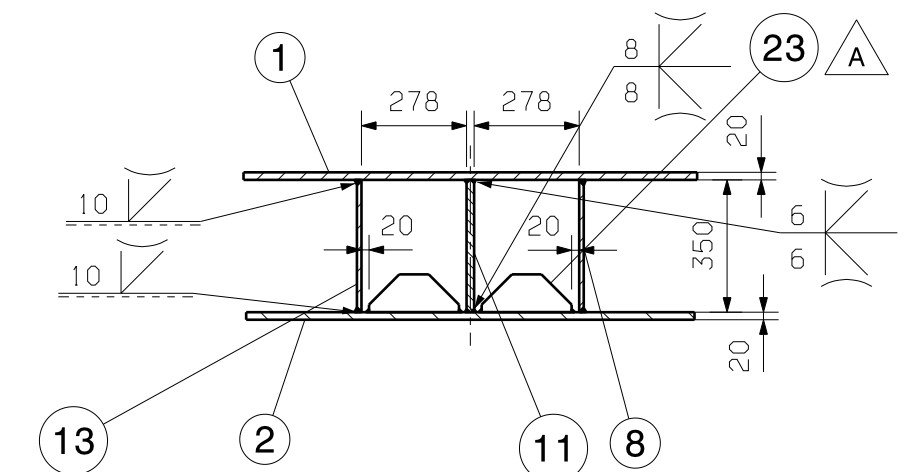
NOTE!
DEBURR ALL SHARP EDGES
ALL WELDS NOT REFERED TO: a=6mm
WELD SIZES ARE THROAT THICKNESS
ALL BUTT WELDS ARE FULL
PENETRATION WELD.



Left view
Scale: 1:20



Section view K-K
Scale: 1:5



Section cut B-B
Scale: 1:20

NOTE!
DETAILS REF.DWG.NO. 01314, 01315, 01316
STIFFENERS AND WEB PLATES WELDED
BETWEEN PLATES HAVE BEEN
REDUCED IN LENGTH TO SIMPLIFY MOUNTING.

Total Weight = 7646kg

Qty.	Specification	Item	Dwg no./Std	Weight Each	Mat.Quality	Notes
2	PLATE 0620X30	52		71,2	S355J2+N	
2	PLATE 15x346X505	51		19	S355J2+N	
2	PLATE 25x306x2000	50		33,3	S355J2+N	
2	PLATE 15x368x558	49		20,8	S355J2+N	
4	PLATE 15x270x271	48		7,49	S355J2+N	
2	PLATE 15x445x496	47		25,3	S355J2+N	
4	PLATE 15x445x240	46		12,1	S355J2+N	
2	PLATE 15x565x496	45		32,1	S355J2+N	
4	PLATE 20x575x1311	44		118,3	S355J2+N	
2	PLATE 15x676x808	43		48,4	S355J2+N	
2	PLATE 15x676x808	41		48,4	S355J2+N	
2	PLATE 15x368x558	40		20,8	S355J2+N	
2	PLATE 15x550x558	39		34,5	S355J2+N	
2	PLATE 15x550x558	38		34,5	S355J2+N	
2	PLATE 15x150x200	37		2,78	S355J2+N	
8	PLATE 12x140x500	36		4,53	S355J2+N	
2	PLATE 15x290x726	35		17,7	S355J2+N	
2	PLATE 15x140x776	34		12,4	S355J2+N	
2	PLATE 15x731x1410	33		107,6	S355J2+N	
2	PLATE 15x450x806	32		32,2	S355J2+N	
2	PLATE 15x450x806	31		32,2	S355J2+N	
2	PLATE 20x320x1440	30		72,4	S355J2+N	
1	END PLUG VSR1-R1/2"-ED	29		0,053	AISI 316	
1	PLATE 25x50x50	28		0,44	S355J2+N	
4	PLATE 15x565x866	27		56,6	S355J2+N	
2	PLATE 15x565x736	26		47,9	S355J2+N	
2	PLATE 15x565x736	25		47,9	S355J2+N	
4	PLATE 12x100x238	23		1,64	S355J2+N	
2	PLATE 0600x10	22		22,2	AISI 316	
2	PLATE 20x425x295	21		14,1	S355J2+N	
4	PLATE 15x125x267	20		1,96	S355J2+N	
2	PLATE 20x425x295	19		14,1	S355J2+N	
1	PLATE 12x557x1256	17		46,1	S355J2+N	
4	PLATE 15x505x842	16		50,1	S355J2+N	
4	PLATE 15x575x1083	15		68,9	S355J2+N	
1	PLATE 12x557x1256	13		46,2	S355J2+N	
4	PLATE 15x280x346	12		9,86	S355J2+N	
1	PLATE 20x1315x9040	11		1032	S355J2+N	
2	PLATE 15x348x1200	10		44,8	S355J2+N	
4	PLATE 12x126x346	9		3,75	S355J2+N	
2	PLATE 12x557x1256	8		46,2	S355J2+N	
4	PLATE 15x310x346	7		11,9	S355J2+N	
2	PLATE 15x346X505	6		19	S355J2+N	
4	PLATE 15x565x731	5		47,7	S355J2+N	
1	PLATE 15x1200x600	4		84,9	S355J2+N	
2	PLATE 15x1200x3158	3		446,1	S355J2+N	
2	PLATE 20x1200x1238	2		194,7	S355J2+N	
1	PLATE 20x1200x8100	1		1714	S355J2+N	
Customer: SEPANGAR NAVY BASE, MALAYSIA						
Project: SHIP TRANSFER SYSTEM						
Date: 03-10-07 POA						
Approved: [Signature]						
General tolerance: NS ISO 2768-medium						
General welding specification: Group B NS 470						
TTS Handling Systemes AS						
Customer Drawing No. 30037						
Part No. 004641						
Drawing No. 01313						
Revision D						

D	12-11-08	ITEM 52 ADDED	POA
C	01-10-08	ITEM 41,43 CH. ITEM 6 CH. SIZE, QTY. 2 OFF. ITEM 51 ADDED	POA
B	29-09-08	DIMENSIONS CHANGED	POA
A	26-08-08	ITEM 23 CHANGED, CORNERS OF IT.12,15,16,44 HAVE BEEN CUT	POA