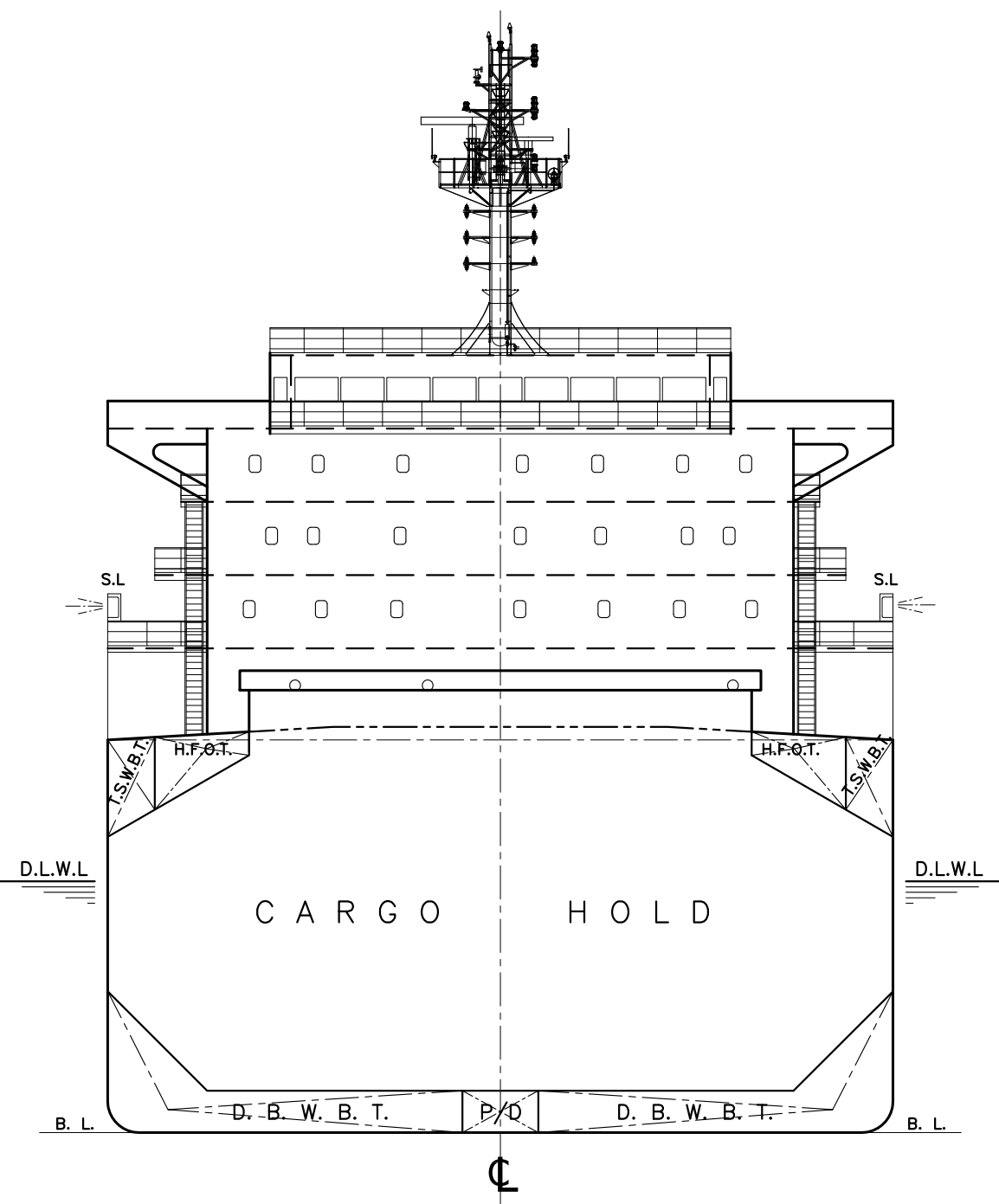
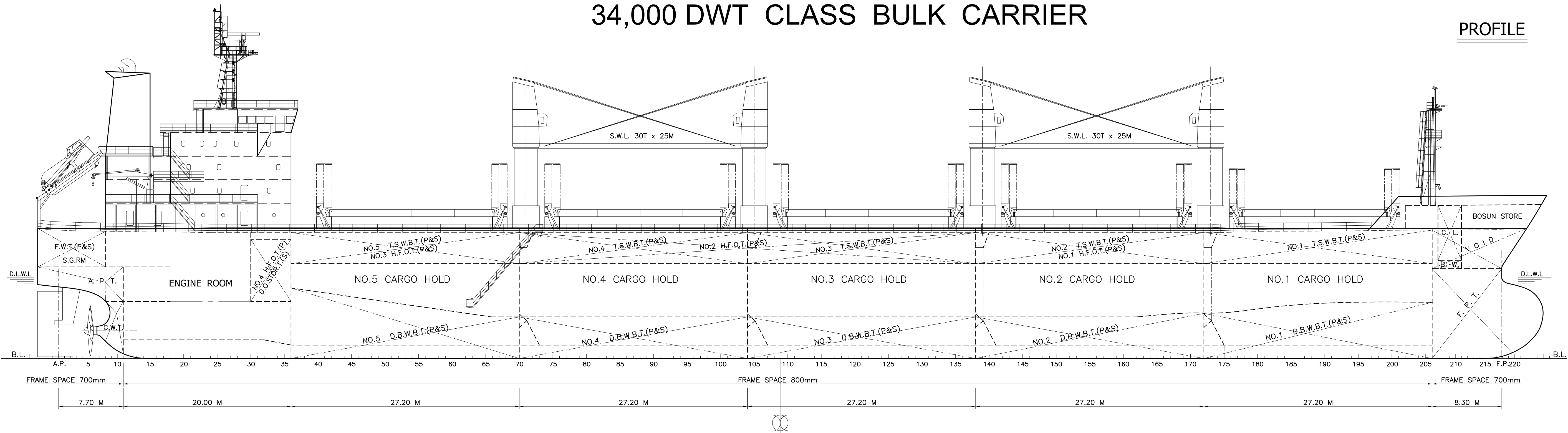
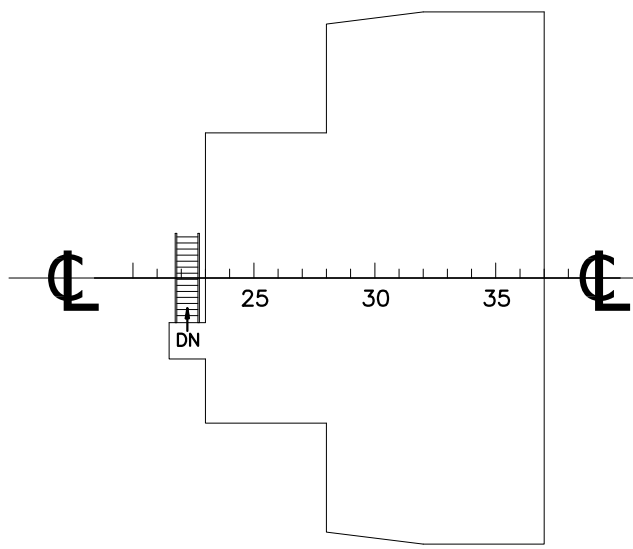


GENERAL ARRANGEMENT
34,000 DWT CLASS BULK CARRIER

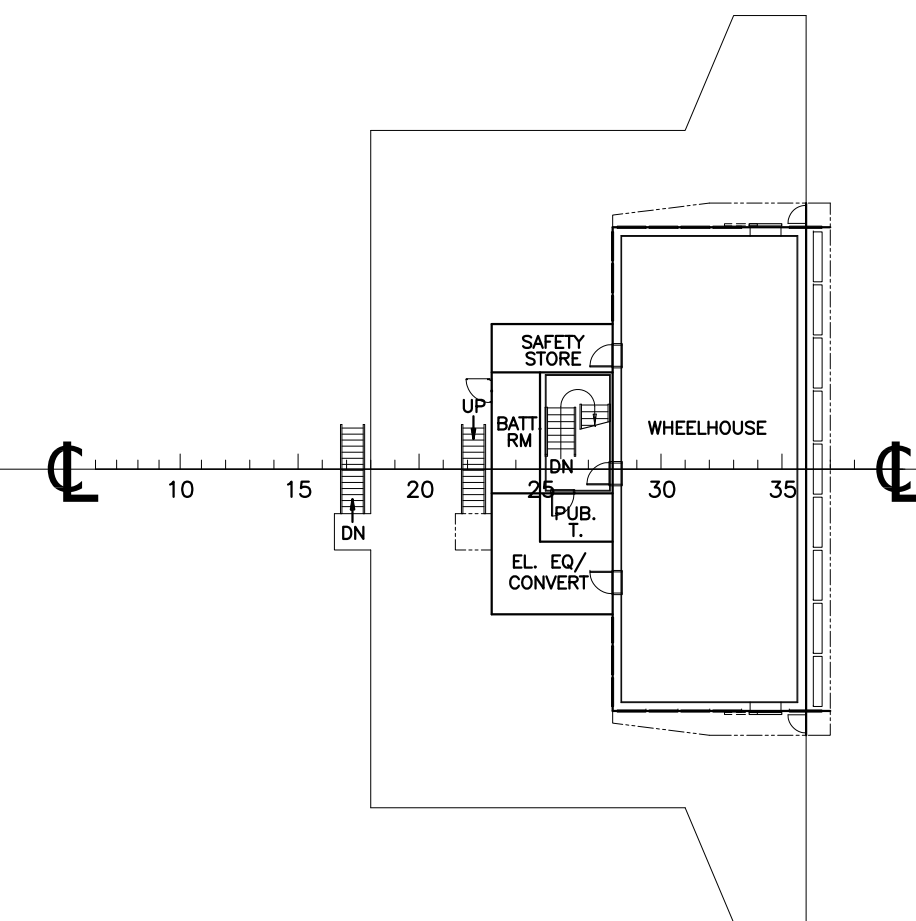
PROFILE



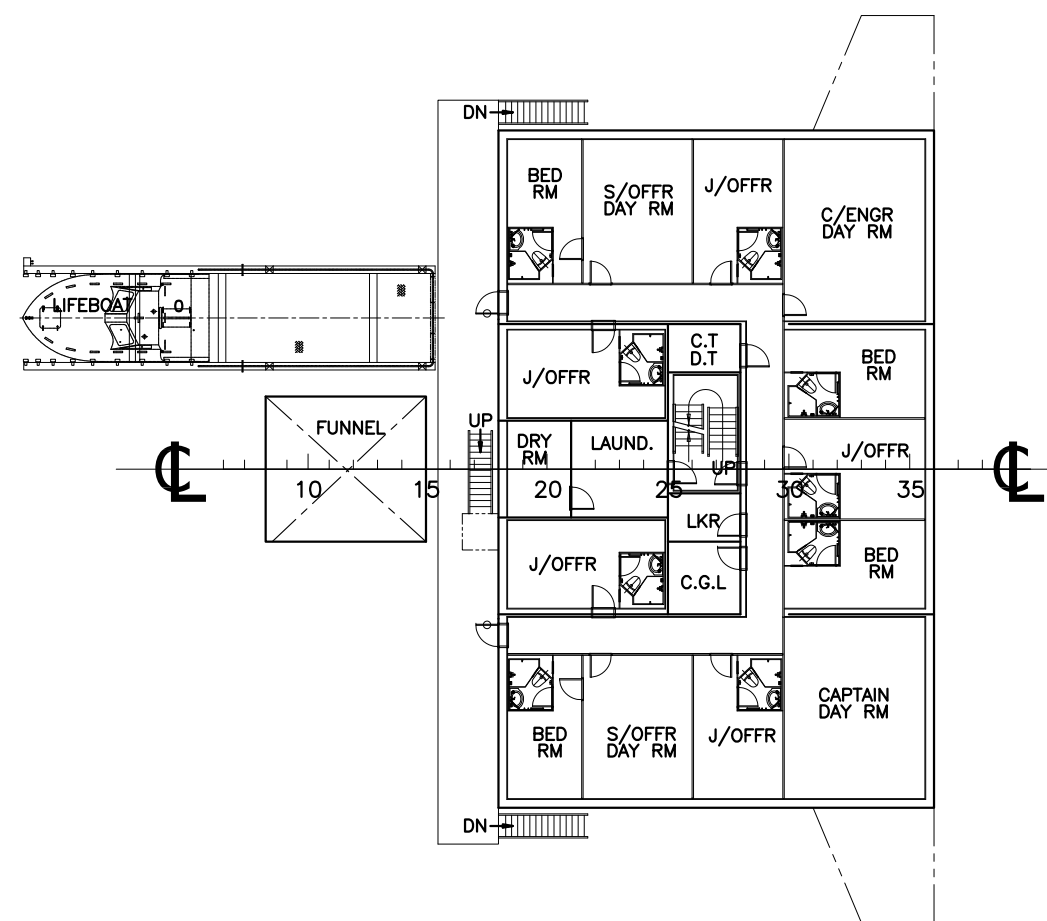
COMPASS DECK



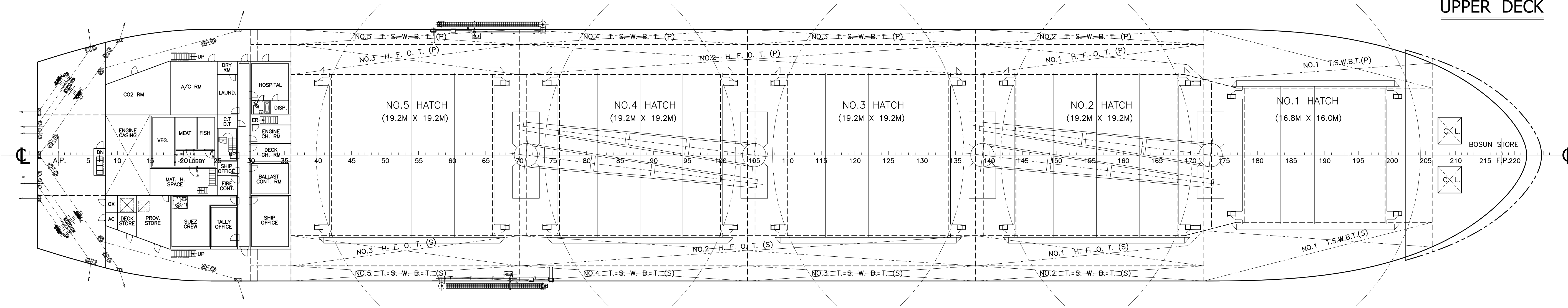
NAV. BRI.- DECK



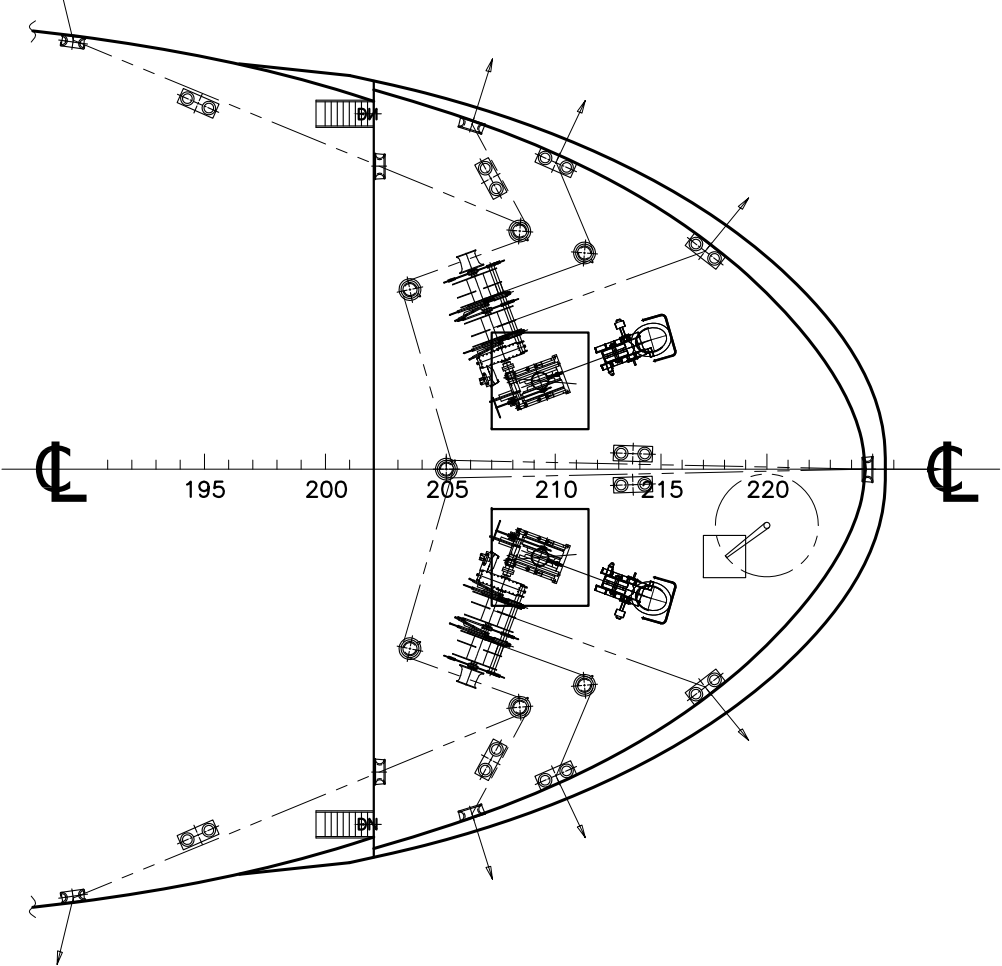
C - DECK



UPPER DECK



F'CLE DECK



PRINCIPAL PARTICULARS

LENGTH O. A.	Abt. 179.90 m
LENGTH B. P.	172.00 m
BREADTH (MLD.)	30.00 m
DEPTH (MLD.)	15.00 m
DESIGN DRAFT (MLD.)	9.60 m
SCANTLING DRAFT (MLD.)	9.95 m

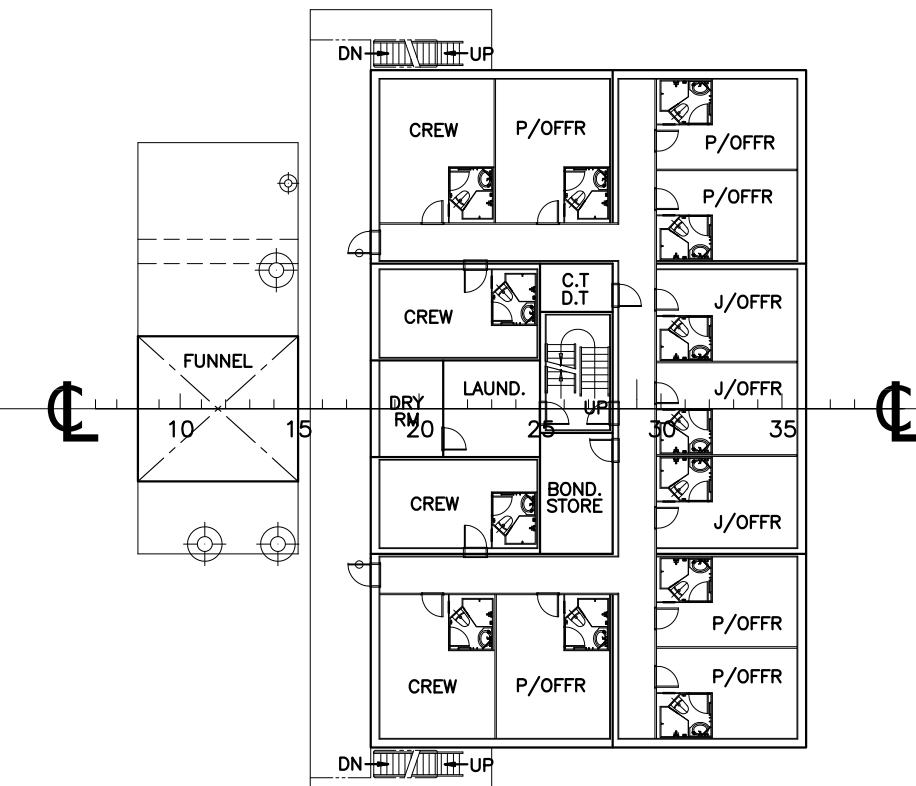
MAIN ENGINE
TYPE : MAN B&W 6S50MC, MK6 (Derated)
DMCR : 7,300 KW X 120.0 RPM
NCR : 6,205 KW X 114.0 RPM

SERVICE SPEED, DESIGN DRAFT 9.60M,
AT NCR, WITH 15% S.M. Abt. 14.0 KTS

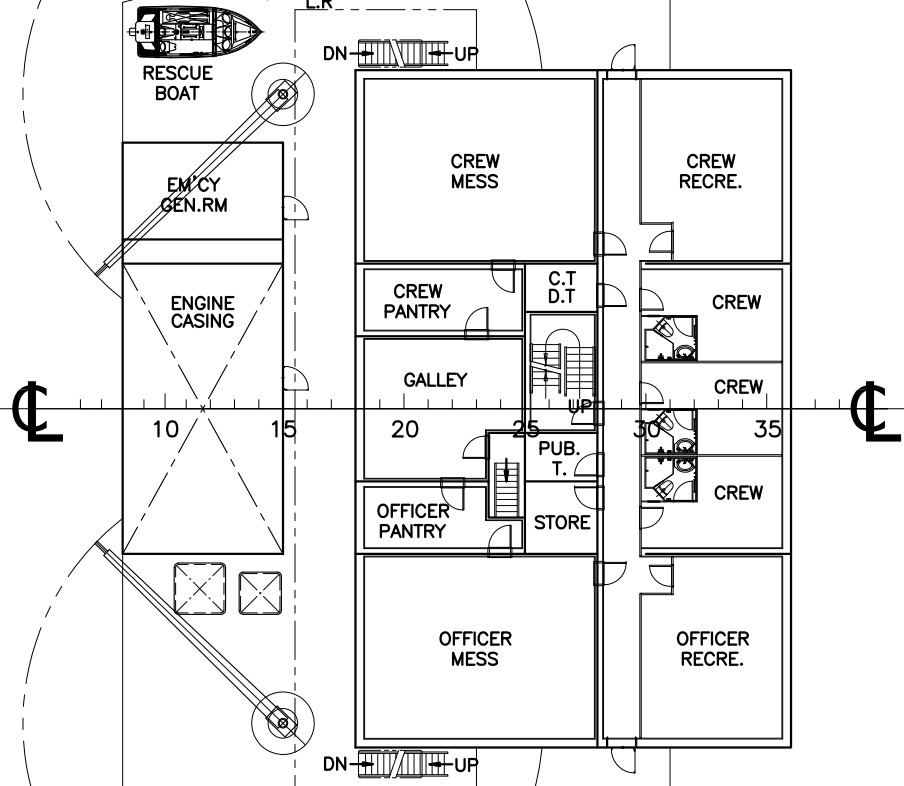
CLASSIFICATION

BV : 1, *HULL, *MACH, Bulk Carrier CSR CPS(WBT)
BC-A (maximum cargo density 3.0 t/m holds
2 and 4 may be empty) ESP, GRAB[20],
VeriSTAR-HULL, *AUT-UMS, MON-SHAFT

B - DECK



A - DECK



TANK TOP

