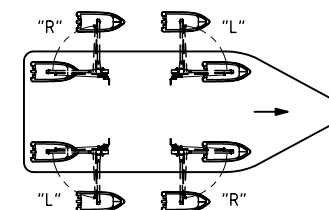


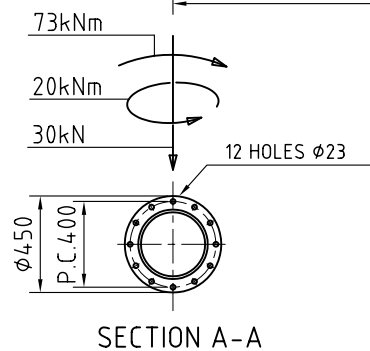
LIFTING HOOK AND PEDESTAL  
HAVE TO BE ORDERED SEPARATELY

LEFT-HANDED EXECUTION HAS BEEN DRAWN  
RIGHT-HANDED EXECUTION IS IN OPPOSITE HAND

EXECUTION OF DAVIT "R" OR "L"




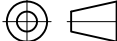
Approx. davit weight:  
(without oil)  
1370 Kg.



#### FOUNDATION CONNECTION PARTS

- 12 BOLTS M20x80, QUALITY 10.9, DIN 931
- 12 NUTS M20 QUALITY 10 DIN 934
- 24 WASHERS 21, DIN 125A

PRESpan MOMENT =620 Nm

POSNR.		QUANT.		DESCRIPTION		MATERIAL		REMARKS		WEIGHT			
				TITEL:		HYDRAULIC SLEWING DAVIT "SCH 12-3.5 R"							
		RvB	RvB	RvB	Name	<div><div><div><div>NED-DECK MARINE</div><div>Survival Systems &amp; Deck Equipment</div></div><div><div>Voltastraat 22</div><div>3771 RZ Barneveld</div><div>Tel.: (+31) 342-422105</div><div>Fax: (+31) 342-492717</div></div></div></div>							
		update	c.o.g.	update weight	Description								
		9.9.04	20.10.04	4.9.03	Date								
D	C	B	A	Rev.	This drawing is the property of NED-DECK MARINE B.V. and may not be reproduced or distributed to third parties without their specific written consent								
						DRAWN: RvB		TOLERANCES					
						DATE: 26-03-'03		NEN-ISO 2768-1					
						APPROVED: -		PROJECTION					
						SCALE: 1:25							
						DRAWING NUMBER				SIZE		REVISION	
						A-100657				A3		C	