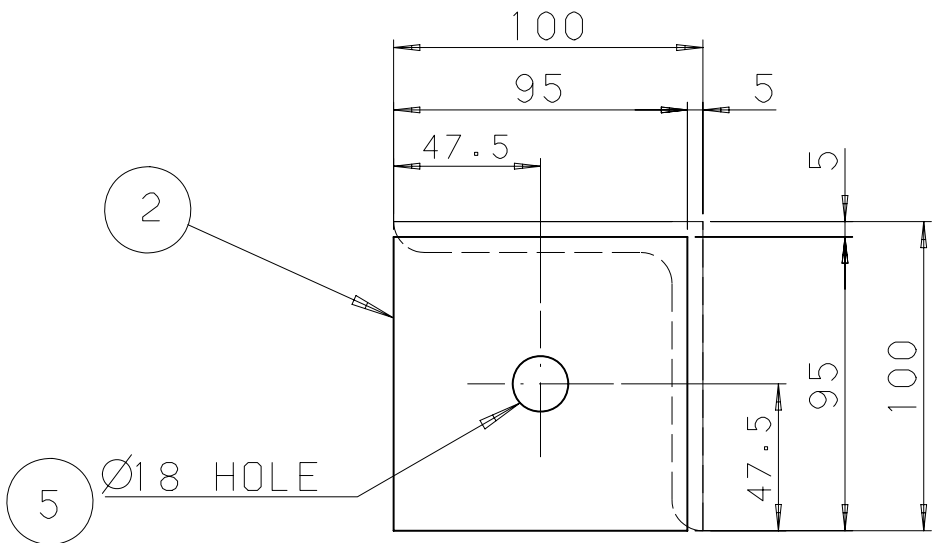
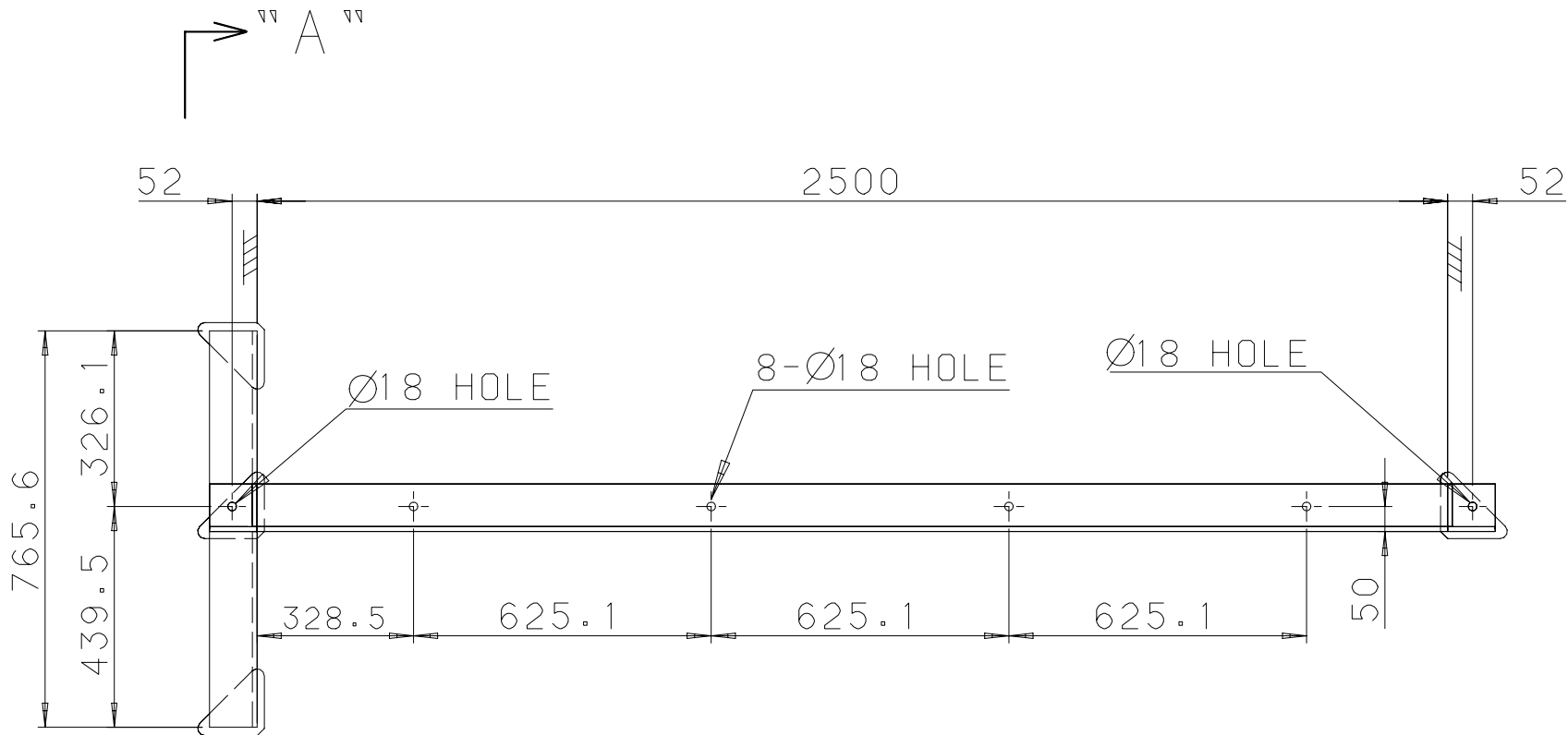


MARK NO.	BLOCK NO.	WEIGHT	Q' TY	REMARK
FAS0-004-537P	537	218.0	1	DRAWN

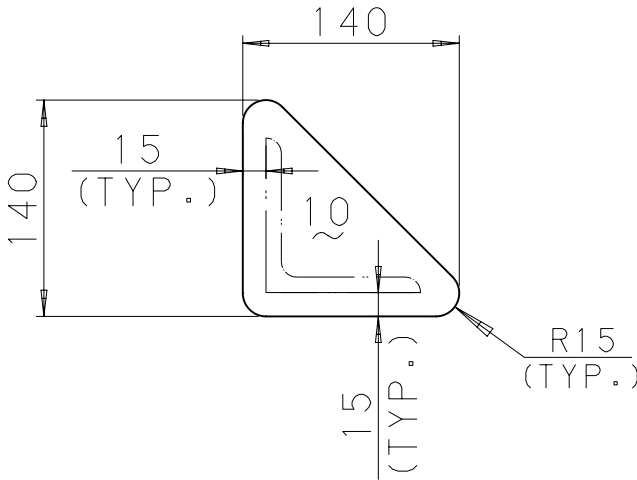
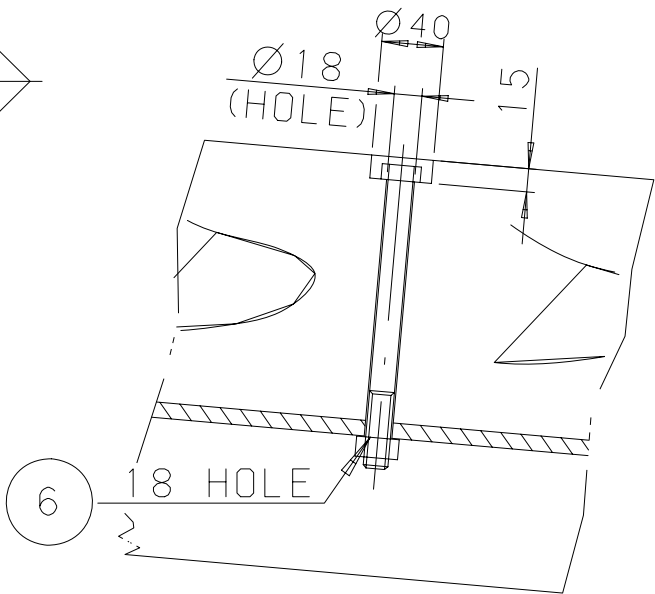
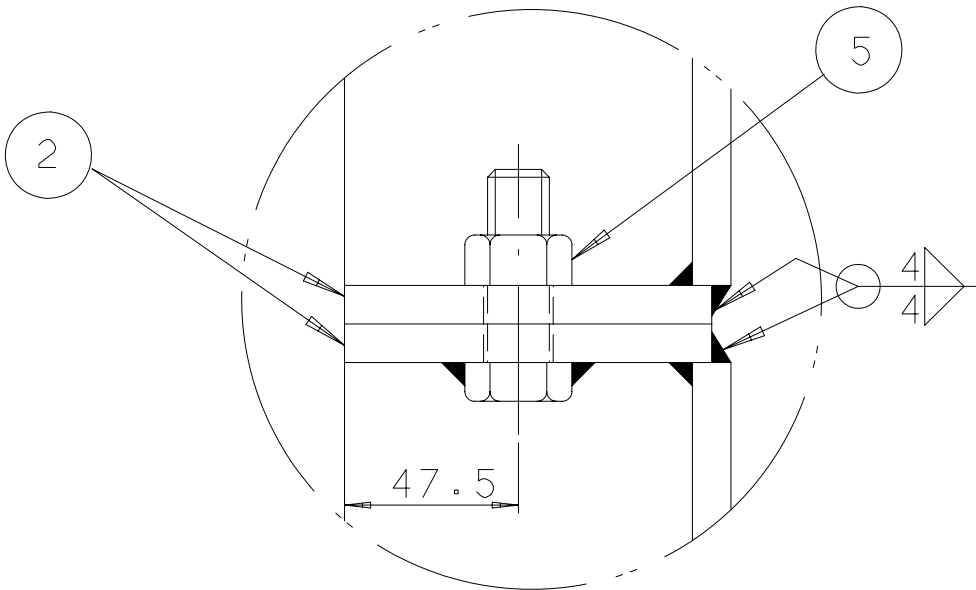
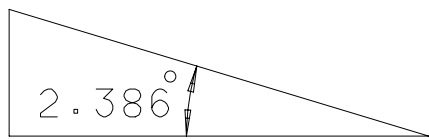
SEC. "B"  
(S: 1/15)



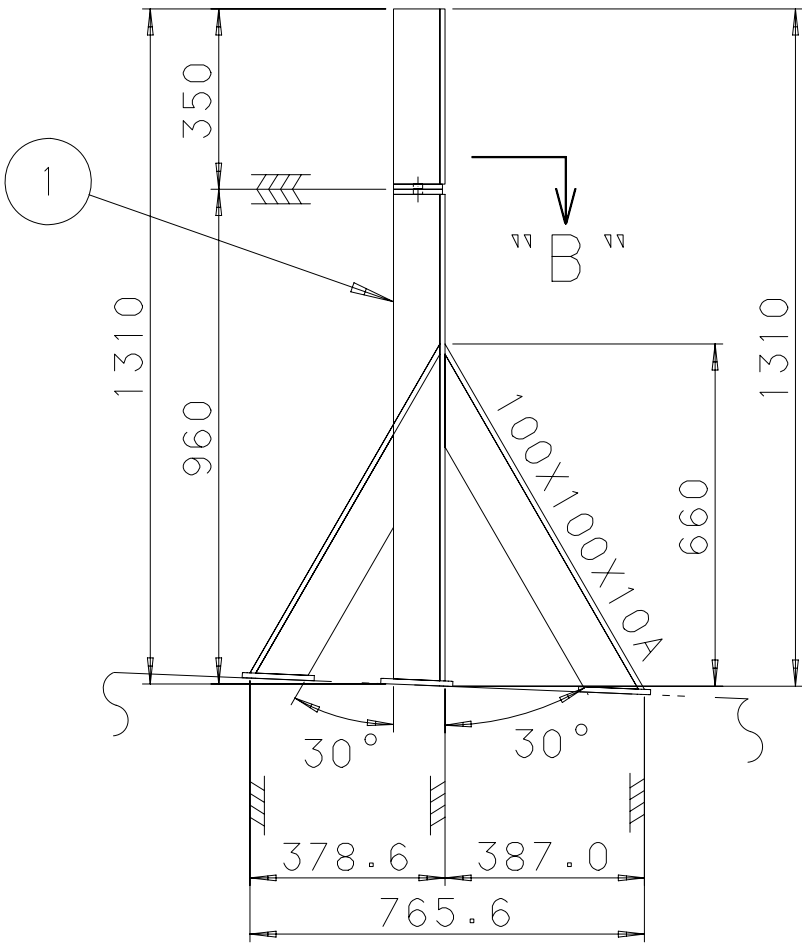
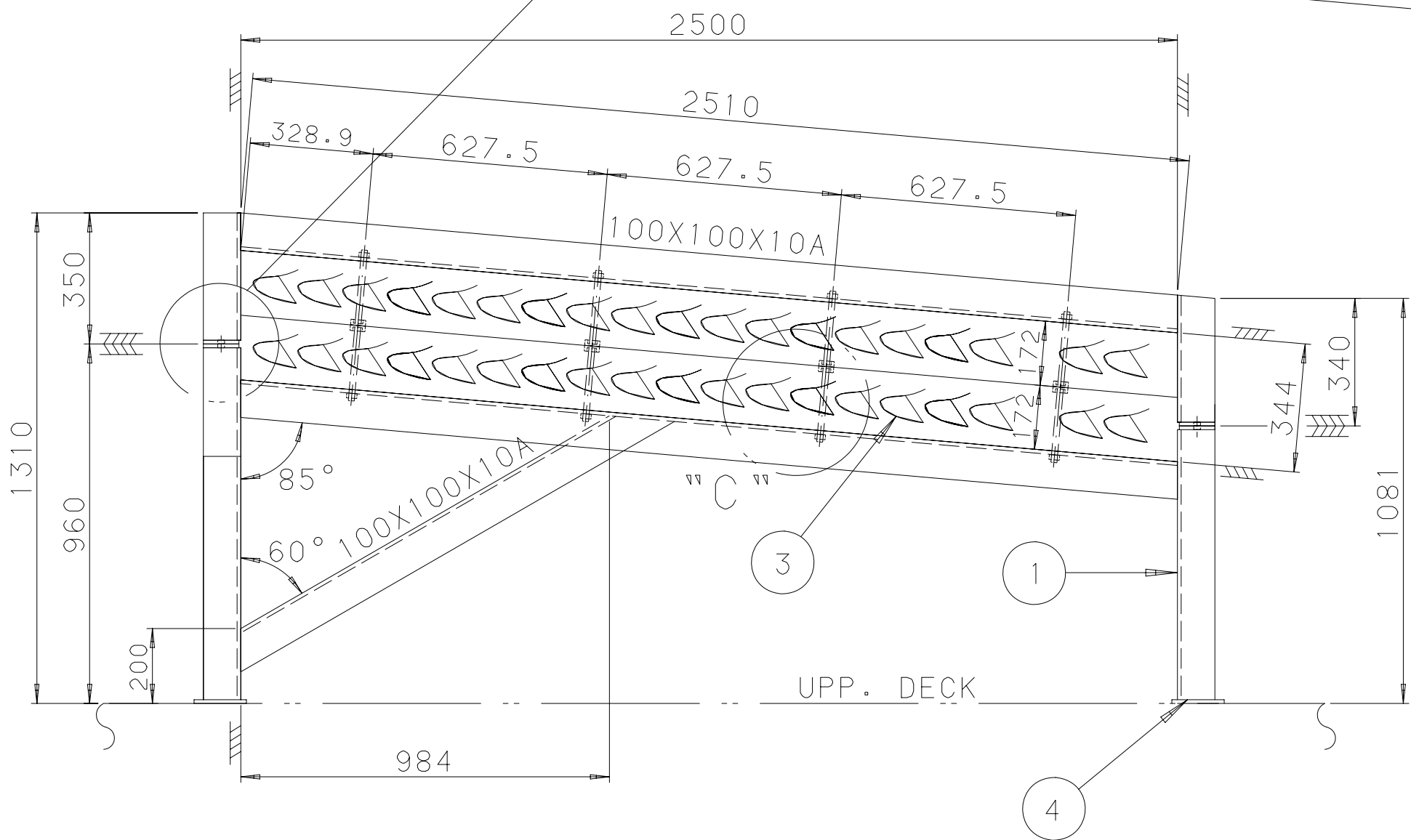
DET. OF "C"  
(S: 1/10)

DET. OF PAD ④  
(S: 1/10)

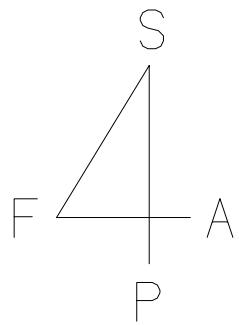
DECK CAMBER



SEC. "A" - "A"  
(S: 1/30)

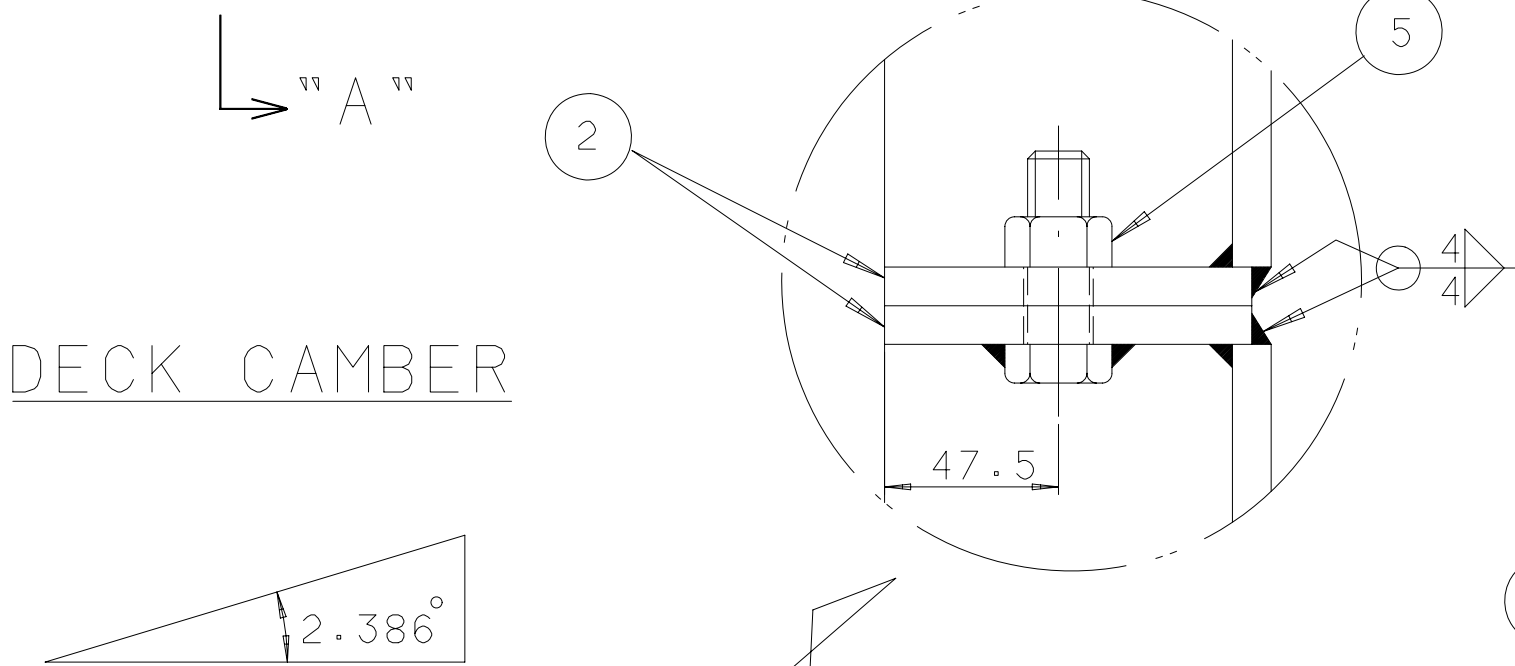
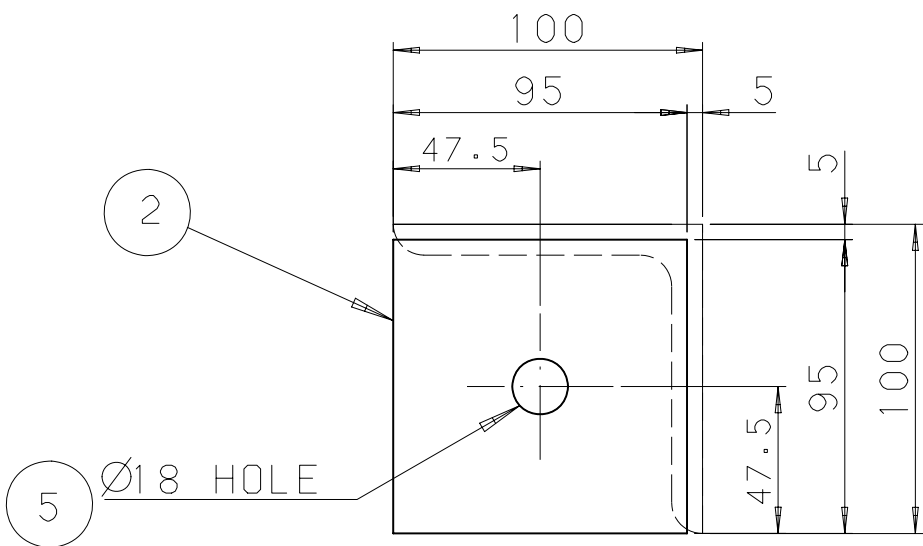
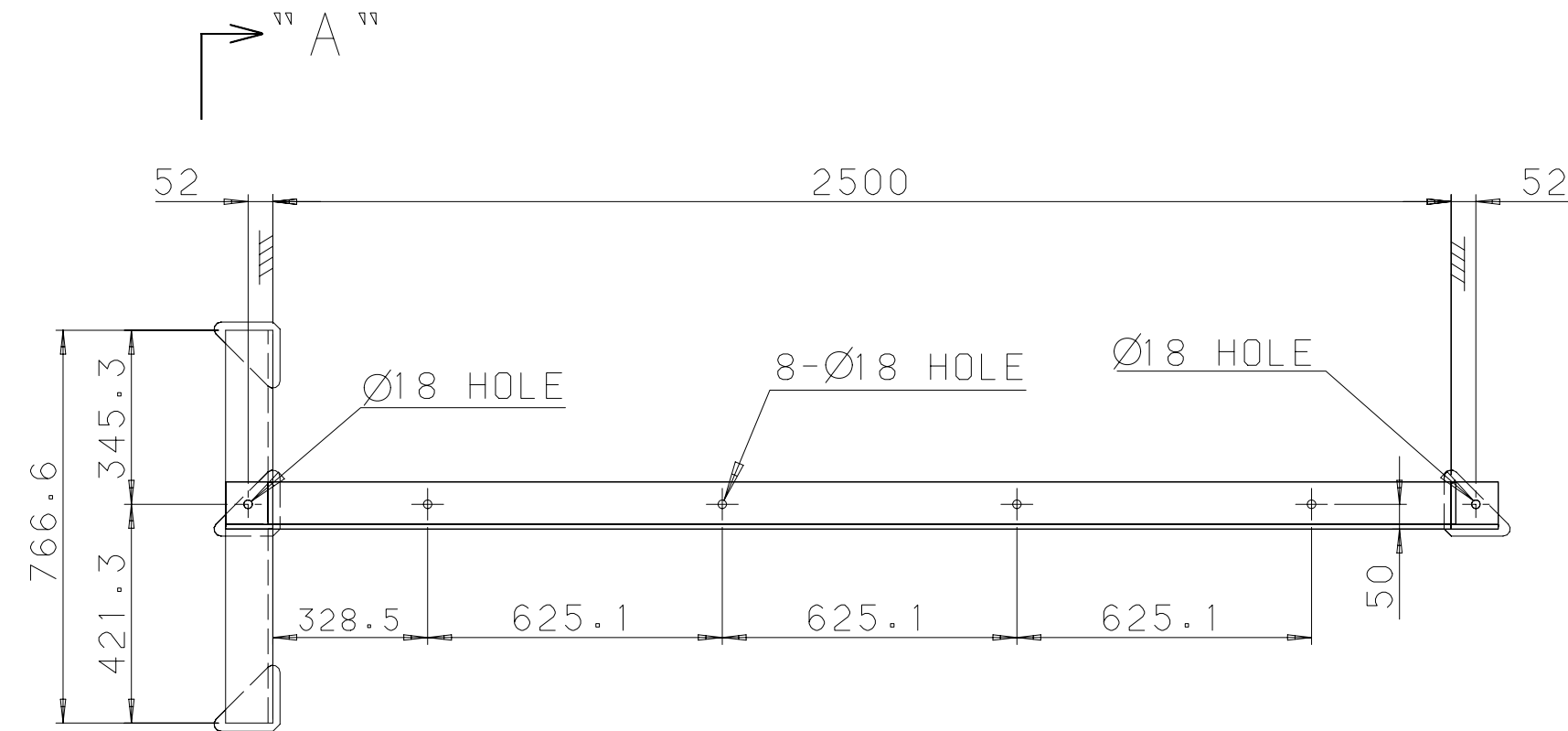


6	BOLT & NUT 螺栓 & 螺母	M16X190L	SUS304	8	—	—	
5	BOLT & NUT 螺栓 & 螺母	M16X50L	SUS304	2SET	—	—	
4	PAD 垫片	10t PLATE	Q235-A	4	4.0	—	
3	WOODEN CHOCK 木楔	172X100t	API TON	2	60.6	—	ADJUSTED AT YARD 现场调整
2	STIFFENER 连接板	95X95X10t P.L.	Q235-A	4	2.9	—	
1	FRAME 底座框架	100X100X10A	Q235-A	10.1M	150.5	—	
NO序号	DESCRIPTION 名称	SIZE 规格	MAT ' L 材料	Q' TY 数量	WEIGHT 重量 (kg)	PAINT AREA 涂漆区域 (m <sup>2</sup> )	REMARK 备注



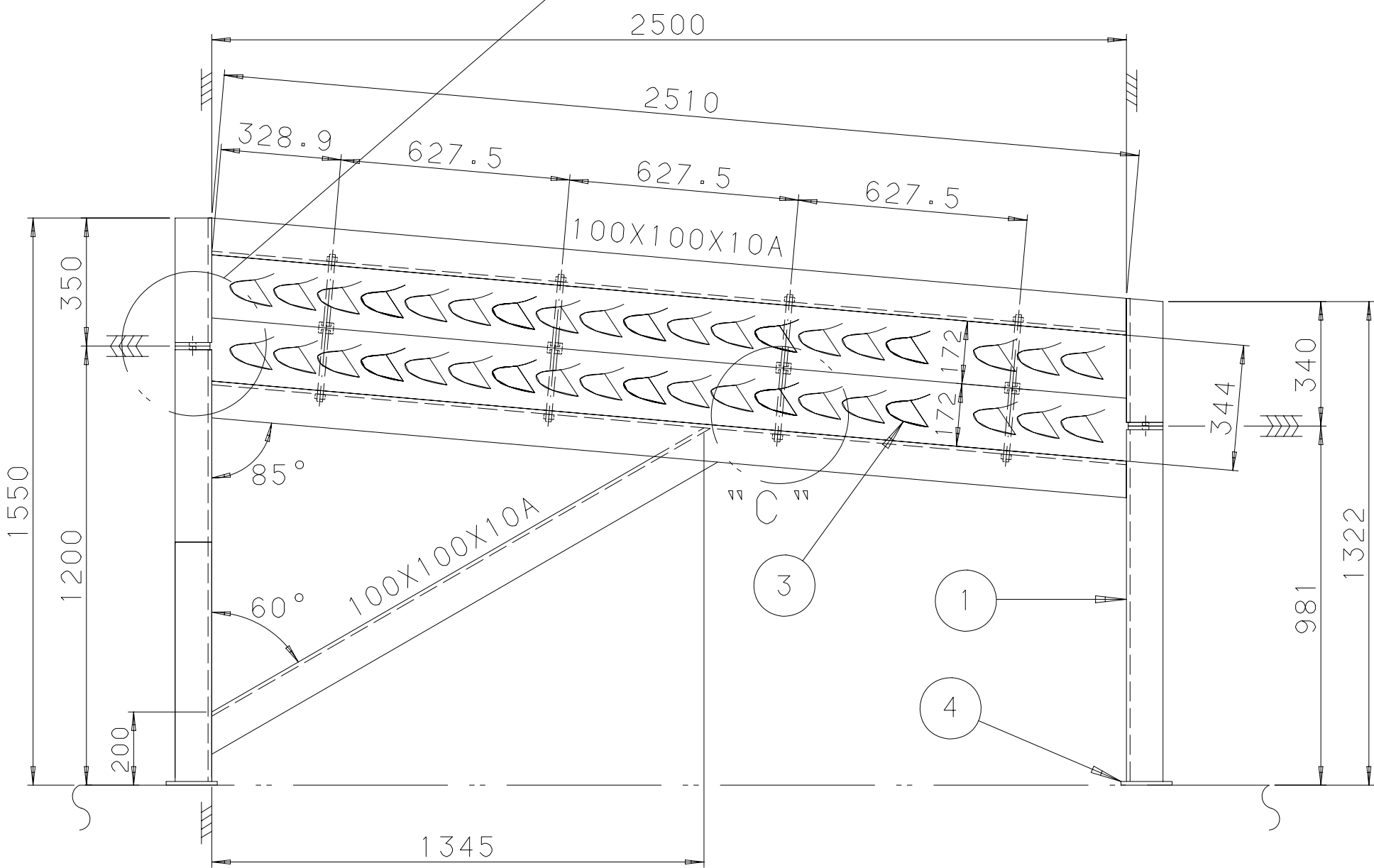
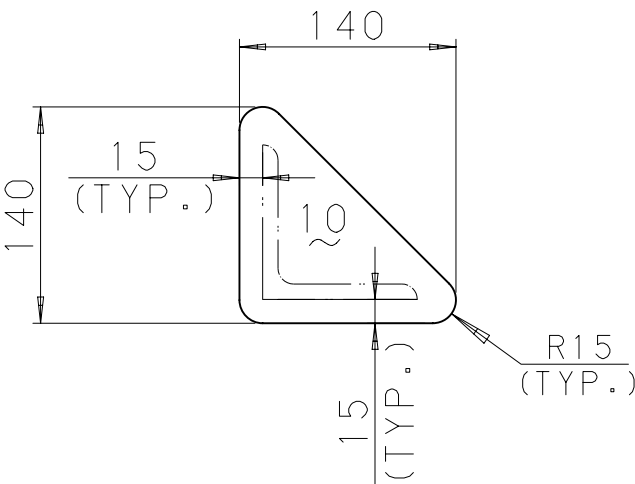
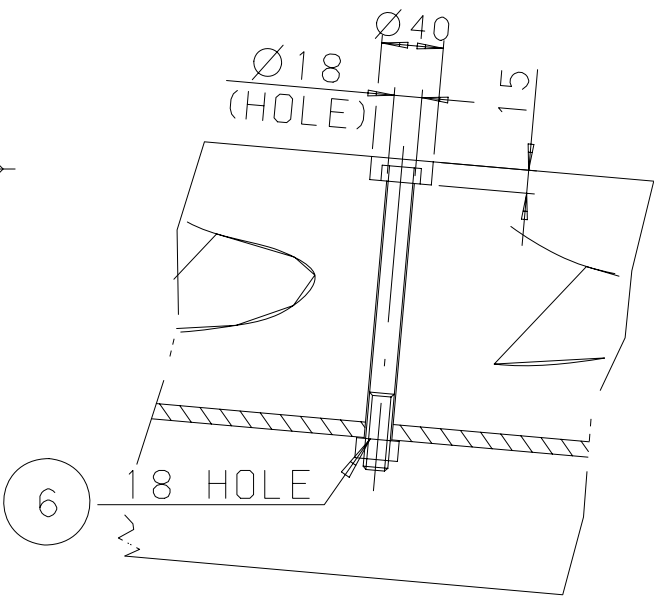
MARK NO.	BLOCK NO.	WEIGHT	Q'TY	REMARK
FAS0-005-537P	537	232.9	1	DRAWN

SEC. "B"  
(S: 1/15)

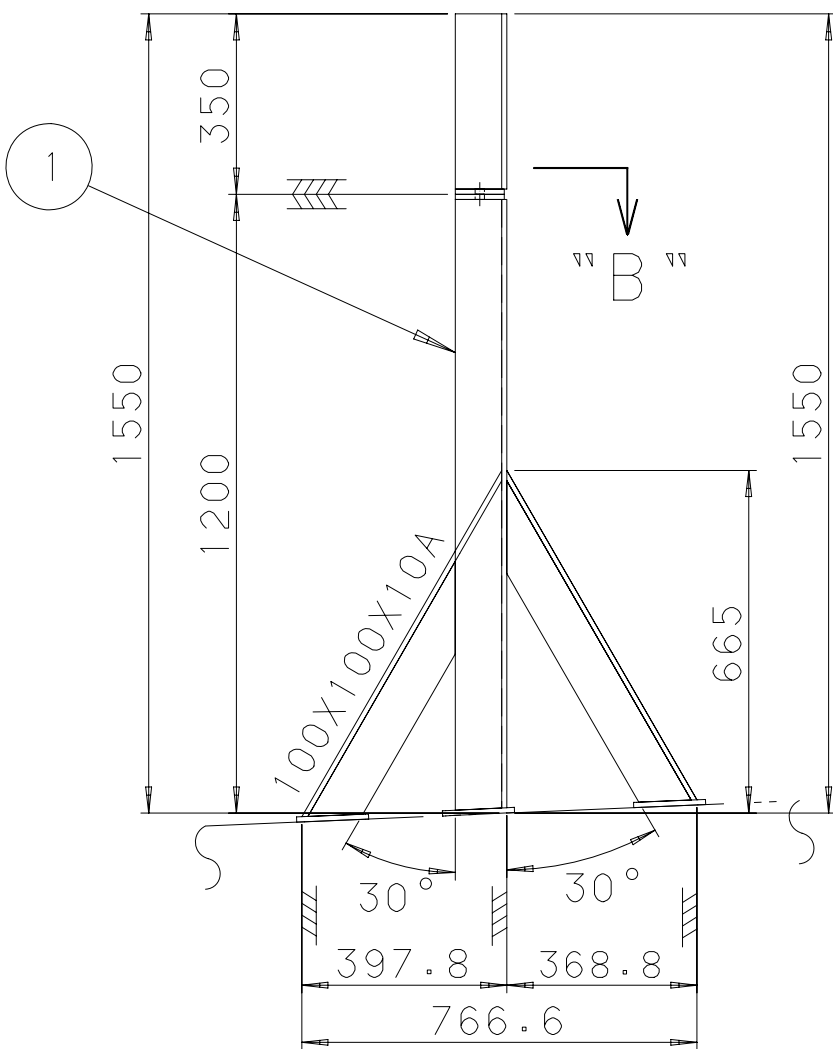


DET. OF "C"  
(S: 1/10)

DET. OF PAD (4)  
(S: 1/10)

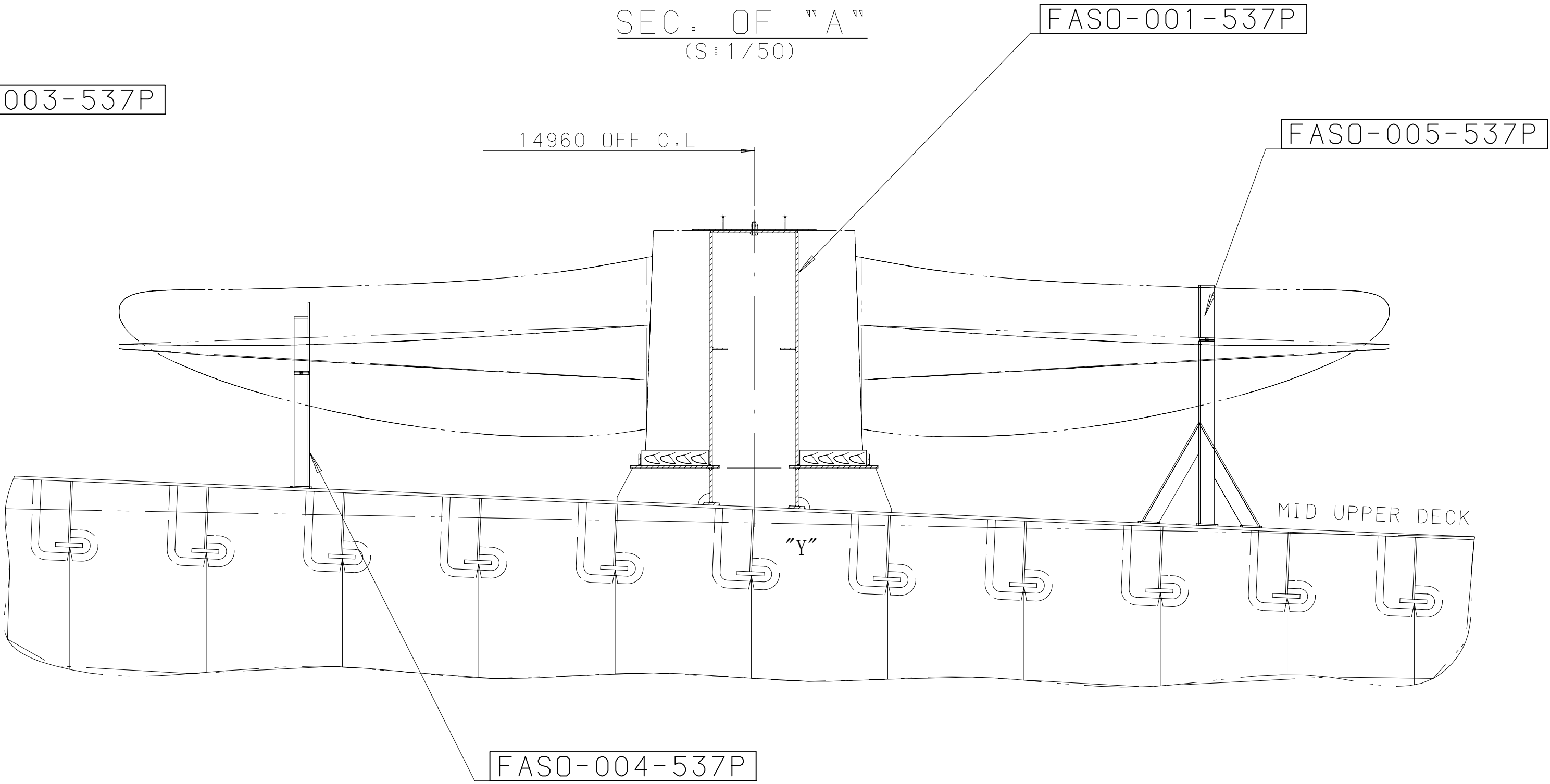
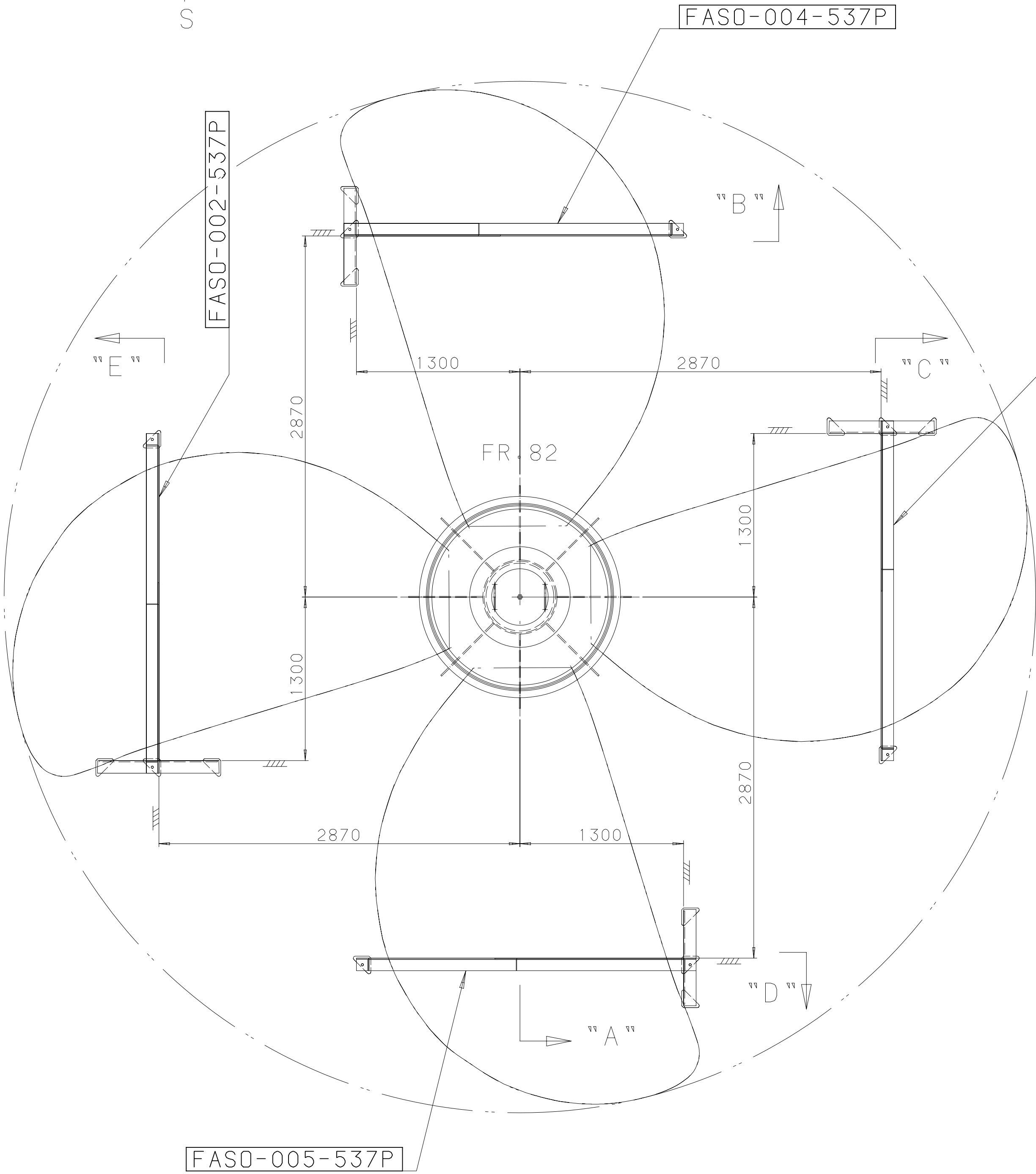


SEC. "A" - "A"  
(S: 1/30)



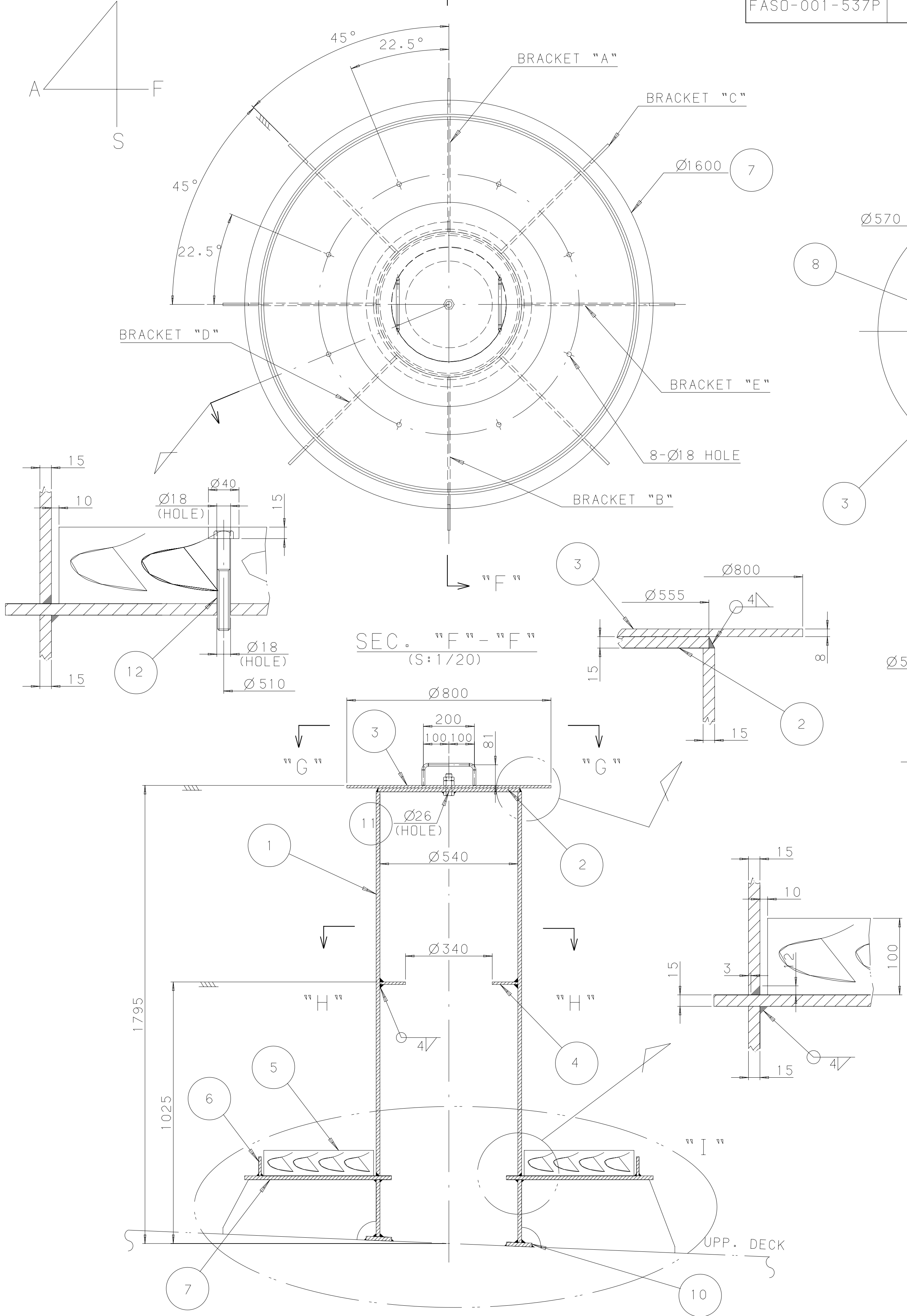
6	BOLT & NUT 螺栓 & 螺母	M16X190L	SUS304	8	—	—	
5	BOLT & NUT 螺栓 & 螺母	M16X50L	SUS304	2SET	—	—	
4	PAD 垫片	10t PLATE	Q235-A	4	4.0	—	
3	WOODEN CHOCK 木楔	172X100t	APITON	2	60.6	—	ADJUSTED AT YARD 现场调整
2	STIFFENER 连接板	95X95X10t P.L.	Q235-A	4	2.9	—	
1	FRAME 底座框架	100X100X10A	Q235-A	11.1M	165.4	—	
NO序号	DESCRIPTION 名称	SIZE 规格	MAT 'L 材料	Q'TY数量	WEIGHT 重量 (kg)	PAINT AREA 涂漆区域 (m <sup>2</sup> )	REMARK 备注

备用螺旋桨存放座制作图



备用螺旋桨存放座制作图

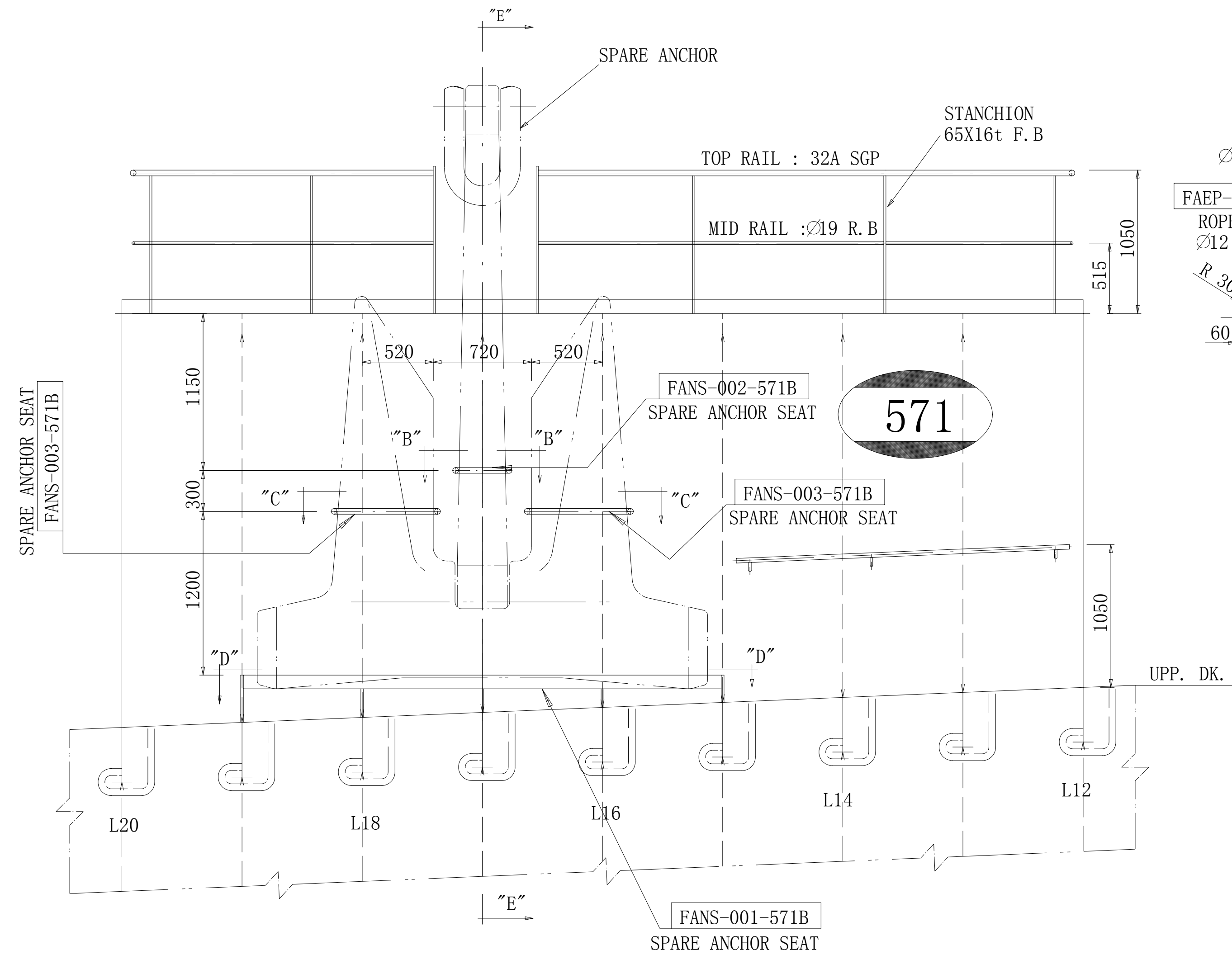
DECK CAMBER



12	BOLT & NUT 螺栓 & 螺母	M16X120L	SUS304	8	-	
11	BOLT & D.NUT 螺栓 & 双螺母	M24X70L	SUS304	1SET	-	
10	PAD 垫片	Ø650X100X15t	Q235-A	1	20.3	
9	BRACKET 加强肘板	10t PLATE	Q235-A	8	85.8	
8	HAND GRIP 手柄	Ø12 R.BAR	Q235-A	2	0.8	
7	SEAT 底座	Ø1600X575X15t	Q235-A	1	218.0	
6	SIDE FRAME 加强围板	75X10t	Q235-A	1	27.4	
5	WOODEN CHOCK 木楔	Ø1450X430X100t	APITON	1	96.4	
4	SUPPORT 圆筒支撑	Ø540X100X10t	Q235-A	1	10.9	
3	COVER 螺旋桨顶盖	Ø800X8t	Q235-A	1	31.6	
2	COVER 圆筒盖子	Ø555X15t	Q235-A	1	28.5	
1	POST 存放座圆筒	Ø570X15t	Q235-A	1	357.2	
NO. 序号	DESCROPTION 名称	SIZE 规格	MAT'L 材料	Q, TY 数量	WEIGHT 重量 (KG/SET)	REMARK 备注

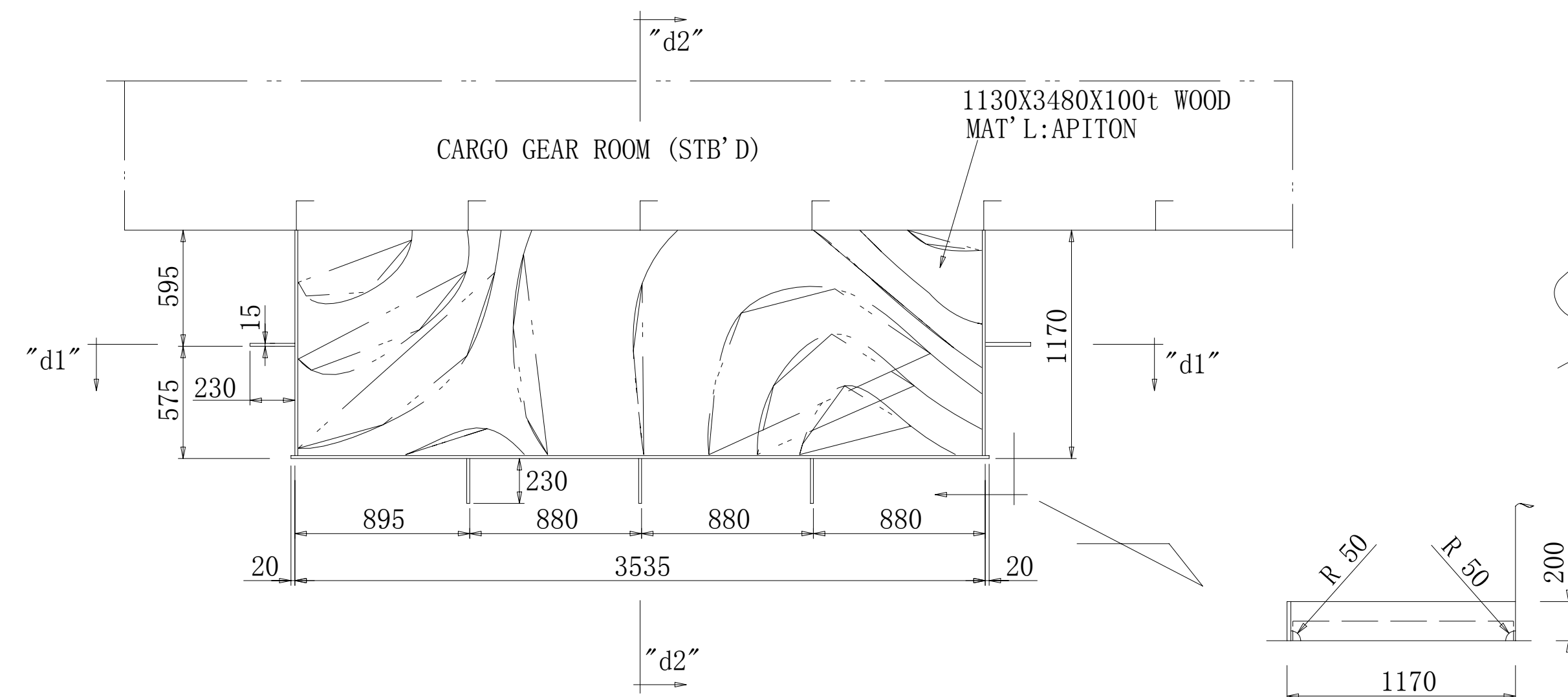
ARR' T OF SPARE ANCHOR

(LOOKING AFT) (S=1/50)



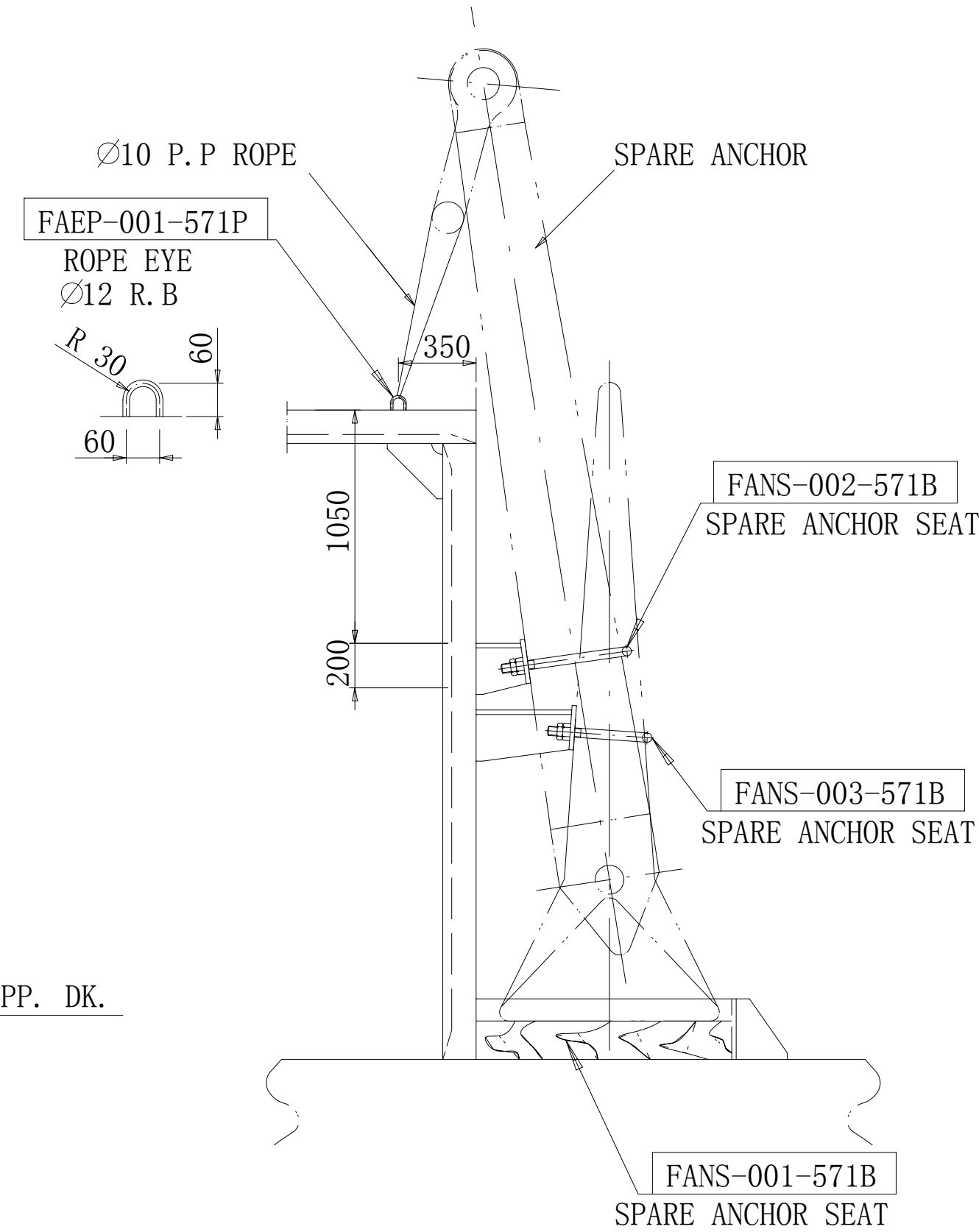
VIEW "D" - "D"

(MARK NO. : FANS-001-571P)  
(S=1/50)



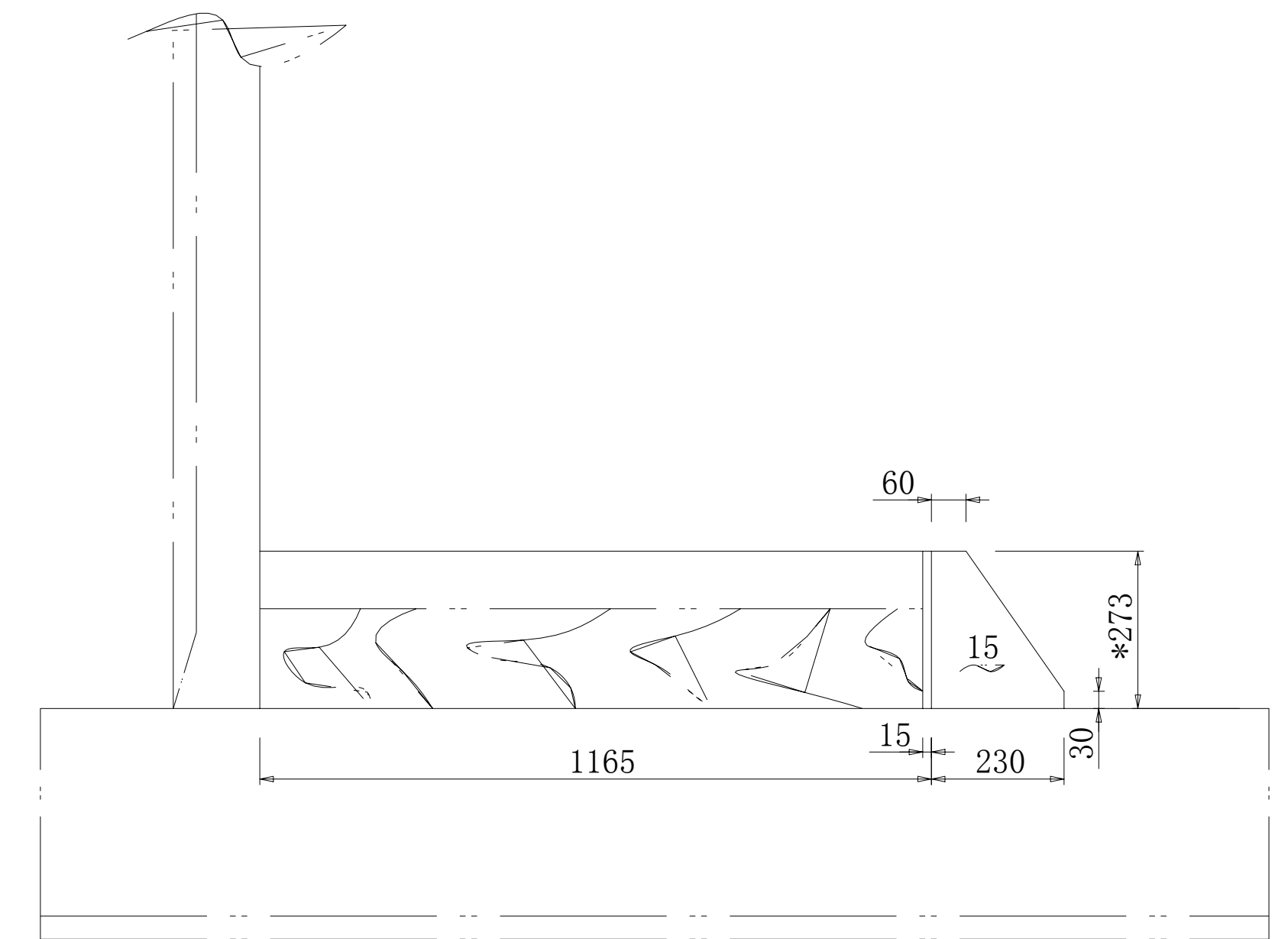
SEC. "E" - "E"

(S=1/50)



SEC. "d2" - "d2"

(S=1/20)



SEC. "d1" - "d1"

(S=1/20)

